

Supplementary Table S1. Clinical characteristics of COVID-19 patients with and without T2D

Variables	Total (N=382)	Non-diabetes (N=274)	Diabetes (N=108)	P value
Characteristics				
Age (Median, IQR)	63(52-70)	60(48-67)	68(61-75)	<0.0001
Sex				0.72
Female	189(49.48)	134(48.91)	55(50.93)	
Male	193(50.52)	140(51.09)	53(49.07)	
Occupation				<0.0001
Employed	116(30.37)	103(37.59)	13(12.04)	
Retired	161(42.15)	111(40.51)	50(46.30)	
Unemployed	105(27.49)	60(21.90)	45(41.66)	
BMI				0.07
<25	275(80.17)	194(77.29)	81(88.04)	
25-30	55(16.03)	47(18.73)	8(8.70)	
≥30	13(3.79)	10(3.98)	3(3.26)	
Smoking history				0.63
No	342(89.53)	244(89.05)	98(90.74)	
Yes	40(10.47)	30(10.95)	10(9.26)	
Onset time (Median, IQR)	9(6-13)	9(6-12)	10(5-15)	0.06
Use of hypnotics				0.016
No	258(75.00)	175(71.43)	83(83.84)	
Yes	86(25.00)	70(28.57)	16(16.16)	
Signs and symptoms				
Fever	306(80.10)	234(85.40)	72(66.67)	<0.0001
Cough	202(52.88)	135(49.27)	67(62.04)	0.024
Fever and Cough	265(69.37)	207(75.55)	58(53.70)	<0.0001
Chest distress	8(2.09)	2(0.73)	6(5.56)	0.0076
Nausea and vomiting	4(1.05)	0	4(1.05)	0.0061
Dyspnea	17(4.55)	15(4.38)	2(4.63)	1
Coexisting conditions				
Any comorbidity	138(36.31)	69(25.18)	69(63.89)	<0.0001
Cirrhosis	4(1.05)	3(1.09)	1(0.93)	1
Hypertension	144(37.70)	79(28.83)	65(60.19)	<0.0001
Cerebrovascular disease	14(3.66)	4(1.46)	10(9.26)	0.0008
Cardiovascular and cerebrovascular diseases	48(12.57)	27(9.85)	21(19.44)	0.011
Digestive system disease	24(6.28)	16(5.84)	8(7.41)	0.57
Endocrine system disease	30(7.85)	7(2.55)	23(21.30)	<0.0001
Respiratory system disease	32(8.30)	25(9.12)	7(6.48)	0.4
Disease severity				<0.0001
Non-severe	160(41.88)	128(46.72)	32(29.63)	
Severe	189(49.48)	132(48.18)	57(52.78)	
Critical	33(8.64)	14(5.11)	19(17.59)	
Outcome				0.033

Alive	345(90.31)	253(92.34)	92(85.19)	
Dead	37(9.69)	21(7.66)	16(14.81)	
Radiologic and laboratory findings				
Abnormalities on chest CT				
No GGO	22(5.76)	7(2.55)	15(13.89)	<0.0001
Local GGO	22(5.76)	12(4.38)	10(9.26)	0.065
Bilateral GGO	191(50.00)	147(53.65)	44(40.74)	0.023
Combination of patchy ground glass opacity and pulmonary consolidation	69(18.06)	54(19.71)	15(13.89)	0.18
Crazy paving sign	29(7.59)	21(7.66)	8(7.41)	0.93
Diffuse patchy ground glass and air bronchogram	29(7.59)	16(5.84)	13(12.04)	0.039
Bilateral multiple pulmonary consolidation and intralobular interstitial thickening	10(2.62)	6(2.19)	4(3.70)	0.48
Laboratory findings				
White blood cell count, 10⁹/L				0.011
<4	98(26.92)	74(28.79)	24(22.43)	
4-10	240(65.93)	164(63.81)	76(71.03)	
>10	26(7.14)	19(7.39)	7(6.54)	
Neutrophil count , 10⁹/L				<0.0001
<40	127(34.89)	60(23.35)	67(62.62)	
40-75	137(37.64)	118(45.91)	19(17.76)	
>75	100(27.47)	79(30.74)	21(19.63)	
Lymphocyte count, 10⁹/L				<0.0001
<20	238(65.38)	147(57.20)	91(85.05)	
20-50	122(33.52)	106(41.25)	16(14.95)	
>50	4(1.10)	4(1.56)	0	
Monocyte count, 10⁹/L				<0.0001
<3	160(44.20)	86(33.73)	74(69.16)	
3-10	160(44.20)	134(52.55)	26(24.30)	
>10	42(11.60)	35(13.73)	7(6.54)	
Platelet count, 10⁹/L				0.82
<100	17(4.70)	11(4.31)	6(5.61)	
100-300	283(78.18)	195(48.04)	84(78.50)	
>300	62(17.13)	45(17.65)	17(15.89)	
Alanine aminotransferase, U/L				0.11
≤7	44(11.83)	36(13.48)	8(7.62)	
7-40	266(71.51)	183(68.54)	83(79.05)	
>40	62(16.67)	48(17.98)	14(13.33)	
Aspartate aminotransferase, U/L				0.029
<13	50(13.40)	41(15.30)	9(8.57)	
13-35	227(60.86)	152(56.72)	75(71.43)	
>35	96(25.74)	75(27.99)	21(20.00)	
C-reactive protein level, mg/L	26.7(8.0-62.6)	28.8(11.1-65.9)	19.2(2.8-59.5)	0.37
Serum amyloid A (SAA) , mg/L	92.5(22.0-210.0)	115(34-210)	34(4-200)	0.0016
Prothrombin time, s	11.9(11.1-13.0)	11.8(11.0-12.9)	12.0(11.3-13.4)	0.36
Activated partial thromboplastin time, s	29.85(25.00-39.40)	31.0(24.6-40.2)	27.7(25.3-27.7)	0.29
D-dimer, mg/L	0.38(0.01-1.73)	0.29(0.01-1.80)	0.50(0.09-1.65)	0.13

Hypersensitive troponin I, pg/mL	0.008(0-0.041)	0.008(0-0.059)	0.007(0.001-0.0225)	0.011
Creatine kinase–CMB, U/L	39.0(4.05-72.5)	6.11(3.9-59.0)	49.0(30.0-82.0)	0.91
			191.0(138.0-234.0)	0.39
Lactate dehydrogenase, U/L	172.5(2.7-236.5)	43.0(2.3-274.0)		
Total bilirubin, mmol/L	10(7-15)	10(7-15)	11(8-16)	0.38
Blood urea nitrogen, mmol/L	3.5(2.7-4.8)	4.6(3.3-6.9)	5.5(4.2-7.9)	0.16
Creatinine, µmol/L	63(48-79)	60(46-76)	68.5(52.0-87.0)	0.0023
Procalcitonin, ng/mL	0.25(0.01-0.06)	0.03(0.01-0.07)	0.02(0.01-0.06)	<0.0001
Blood glucose, mmol/L	5.8(5.1-7.5)	5.5(4.9-6.4)	7.7(5.9-10.8)	<0.0001
Glycated hemoglobin, mmol/mol				
Potassium, mmol/L	4.0(3.6-4.4)	3.9(3.5-4.3)	4.1(3.7-4.5)	0.0073
Low-density lipoprotein (LDL), mmol/L	2.31(1.88-2.96)	2.26(1.82-2.86)	2.50(2.12-3.11)	0.047
High-density lipoprotein (HDL), mmol/L	1.07(0.86-1.37)	1.09(0.86-1.33)	1.04(0.88-1.30)	0.35
Treatment				
Antiviral therapy				
Oseltamivir	244(64.04)	193(70.70)	51(47.22)	<0.0001
Ganciclovir	251(65.88)	191(69.96)	60(55.56)	0.0075
Arbidol	250(65.62)	180(65.93)	80(64.81)	0.83
Kaletra	30(7.87)	18(6.59)	12(11.11)	0.14
Interferon	22(5.76)	18(6.57)	4(3.70)	0.28
Antibiotic therapy				
Antibiotics	344(90.29)	259(94.87)	85(78.70)	<0.0001
Steroid therapy				
Corticosteroid/Glucocorticoid	196(60.49)	161(58.97)	35(68.63)	0.2
Oxygen support				
Non-invasive ventilation				<0.0001
No	330(86.39)	251(91.61)	79(73.15)	
Yes	52(13.61)	23(8.39)	29(26.85)	
Invasive ventilation				0.52
No	264(69.11)	192(70.07)	72(66.67)	
Yes	118(30.89)	82(29.93)	36(33.33)	
Complications				
Acute cardiac injury	44(11.52)	30(10.95)	14(12.96)	0.58
Arrhythmia	28(7.35)	13(4.76)	15(13.89)	0.0021
ARDS*	105(27.49)	75(27.37)	30(27.78)	0.94
Acute kidney injury	13(3.41)	8(2.93)	5(4.63)	0.53
Acute renal injury	17(4.46)	11(4.03)	6(5.56)	0.52
Septic shock	19(4.99)	8(2.93)	11(10.19)	0.0034
Secondary infection	10(2.62)	5(1.83)	5(4.63)	0.15

*ARDS, Acute respiratory distress syndrome

Supplementary Table S2. Clinical characteristics between survivors and non-survivors in COVID-19 patients with T2D

Variables	Total (N=108)	Non-survivor (N=16)	Survivor (N=92)	P Value
Characteristics				
Age, y	68(61-75)	74(65-89)	67(60-73)	0.017
Age at diagnosed with diabetes, y	60(52-66)	62(56-67)	60(51-66)	0.14
Duration of diabetes, y	8(4-13)	10(6-20)	8(4-12)	0.051
Sex				0.53
Female	55(50.9)	7(43.8)	48(52.2)	
Male	53(49.1)	9(56.2)	44(47.8)	
Occupation				0.17
Employed	13(12.0)	1(6.3)	12(13.0)	
Retired	50(46.3)	11(68.7)	39(42.4)	
Unemployed	45(41.7)	4(25.0)	41(44.6)	
BMI				0.053
<25	81(88.0)	12(85.7)	69(88.5)	
25-30	8(8.7)	0	8(10.2)	
≥30	3(3.3)	2(14.3)	1(1.3)	
Smoking history				0.16
No	98(90.7)	13(81.3)	85(92.4)	
Yes	10(9.3)	3(18.7)	7(7.6)	
Onset time, d	10(5-15)	8(4-11)	10(6-15)	0.032
Disease severity				0.0003
Non-severe	32(29.6)	2(12.5)	30(32.6)	
Severe	57(52.8)	5(31.3)	52(56.5)	
Critical	19(17.6)	9(56.2)	10(10.9)	
Signs and symptoms				
Fever	72/108(66.7)	9/16(56.3)	63/92(68.5)	0.34
Cough	67/108(62.0)	9/16(56.3)	58/92(63.0)	0.59
Fever and Cough	50/108(53.7)	7/16(43.7)	51/92(55.4)	0.43
Chest distress	6/108(5.6)	2/16(12.5)	4/92(4.4)	0.21
Nausea and vomiting	4/108(3.7)	1/16(6.3)	3/92(85.2)	0.48
Dyspnea	5/108(4.6)	0/16(0)	5/92(5.4)	
Coexisting conditions				
Any comorbidity	69/108(63.9)	14/16(87.5)	55/92(59.8)	0.033
Cirrhosis	1/108(0.9)	1/16(6.3)	0/92(0)	0.29
Hypertension	65/108(60.2)	10/16(62.5)	55/92(59.8)	1
Cerebrovascular disease	10/108(9.3)	0/16(0)	10/92(10.9)	0.35
Cardiovascular and cerebrovascular diseases	21/108(19.4)	8/16(50.0)	13/92(14.1)	0.0027
Digestive system disease	8/108(7.4)	4/16(25.0)	4/92(4.4)	0.016
Endocrine system disease	23/108(21.3)	1/16(6.3)	22/92(23.9)	0.18
Respiratory system disease	7/108(6.5)	3/16(18.8)	4/92(4.4)	0.065
Radiologic and laboratory findings				
Radiologic findings				
Abnormalities on chest CT				

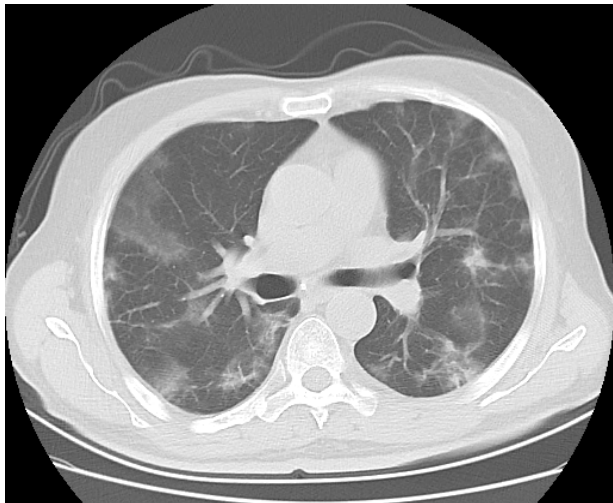
No GGO	15/108(13.9)	1/16(6.3)	14/92(15.2)	0.46
Local GGO	10/108(9.3)	0/16(0)	10/92(10.9)	0.35
Bilateral GGO	44/108(40.7)	6/16(37.5)	38/92(41.3)	1
Combination of patchy ground glass opacity and pulmonary consolidation	15/108(13.9)	0/16(0)	15/92(16.3)	0.12
Crazy waving sign	8/108(7.4)	3/16(18.8)	5/92(5.4)	0.095
Diffuse patchy ground glass and air bronchogram	13/108(12.0)	1/16(6.3)	12/92(13.0)	0.69
Bilateral multiple pulmonary consolidation and intralobular interstitial thickening	4/108(3.7)	2/16(12.5)	2/92(2.7)	0.1
Laboratory findings				
White blood cell count, 10⁹/L				0.011
<4	24(22.4)	3(20.0)	21(22.8)	
4-10	76(71.0)	8(53.3)	68(73.9)	
>10	7(6.5)	4(26.7)	3(3.3)	
Neutrophil count, 10⁹/L				0.0029
<40	67(62.6)	5(33.3)	62(67.4)	
40-75	19(17.8)	2(13.3)	17(18.5)	
>75	21(19.6)	8(53.4)	13(14.1)	
Lymphocyte count, 10⁹/L				0.46
<20	91(85.1)	14(93.3)	77(83.7)	
20-50	16(14.9)	1(6.7)	15(16.3)	
Monocyte count, 10⁹/L				0.39
<3	74(69.2)	9(60.0)	65(70.7)	
3-10	26(24.3)	4(26.7)	22(23.9)	
>10	7(6.5)	2(13.3)	5(5.4)	
Platelet count, 10⁹/L				0.036
<100	6(5.6)	3(20.0)	3(3.3)	
100-300	84(78.5)	9(60.0)	75(81.5)	
>300	17(15.9)	3(20.0)	14(15.2)	
Alanine aminotransferase, U/L				0.21
≤7	8(7.6)	0	8(8.9)	
7-40	83(79.1)	11(73.3)	72(80.0)	
>40	14(13.3)	4(26.7)	10(11.1)	
Aspartate aminotransferase, U/L				<0.0001
<13	9(8.6)	0	9(10.0)	
13-35	75(71.4)	5(33.3)	70(77.8)	
>35	21(20.0)	10(66.7)	11(12.2)	
C-reactive protein, mg/L	19.2(2.8-59.5)	94.85(48-146.75)	15.2(2.4-45)	<0.0001
Serum amyloid A (SAA), mg/L	34(4-200)	210(200-250)	153(2-153.5)	<0.0001
Prothrombin time, s	12(11.3-13.4)	12.05(11.1-12.8)	12(10.7-13.4)	0.2
Activated partial thromboplastic time, s	27.7(25.3-34.2)	35.35(18.20-57)	26.9(25.1-30.8)	0.0044
D-dimer, mg/L	0.5(0.09-1.65)	0.33(0.01-3.54)	0.5(0.13-1.56)	0.011
Hypersensitive troponin I, pg/mL	0.007(0.001-0.023)	0.039(0.01-0.13)	0.001(0-0.017)	0.18
Creatine kinase–CMB, U/L	49(30-82)	40(12.7-122.5)	51(34.0-81.5)	0.24
Lactate dehydrogenase, U/L	191(138-234)	232(223-525)	176(136.5-228.5)	0.0011
Total bilirubin, mmol/L	11(8-16)	12(8-18)	11(8-14)	0.62
Blood urea nitrogen, mmol/L	5.45(4.15-7.85)	7.9(6.1-10.2)	5.1(4.0-6.7)	0.18

Creatinine, µmol/L	68.5(52-87)	74(66-116)	68(49-86)	0.026
Procalcitonin, ng/mL	0.02(0.01-0.06)	0.05(0.02-0.23)	0.02(0.01-0.05)	0.35
Blood glucose, mmol/L	7.7(5.9-10.8)	11.5(5.4-18.3)	7.6(6.1-9.5)	0.05
Glycated hemoglobin, mmol/mol	7.5(6.5-8.6)	7.7(6.6-8.6)	7.5(6.5-8.6)	0.73
Potassium, mmol/L	4.1(3.7-4.5)	4.2(3.4-4.6)	4.1(3.7-4.5)	0.47
Low-density lipoprotein (LDL), mmol/L	2.5(2.1-3.1)	2.3(2.1-2.8)	2.6(2.1-3.2)	0.012
High-density lipoprotein (HDL), mmol/L	1.04(0.9-1.3)	1.05(0.8-1.2)	1.03(0.9-1.3)	0.013
Treatments				
Diabetes treatment				<0.0001
Oral medication plus insulin	15(13.9)	2(12.5)	13(14.1)	
Oral medication only	65(60.2)	2(12.5)	63(68.5)	
Insulin only	28(25.9)	12(75.0)	16(17.4)	
Antiviral therapy				
Oseltamivir	51/108(47.2)	12/16(75.0)	39/92(85.2)	0.028
Ganciclovir	60/108(55.6)	14/16(87.5)	46/92(50.0)	0.0059
Arbidol	70/108(64.8)	7/16(43.8)	63/92(68.5)	0.056
Kaletra	12/108(11.1)	4/16(25.0)	8/92(8.7)	0.077
Interferon	4/108(3.7)	2/16(12.5)	2/92(2.2)	0.1
Antibiotic therapy				
Antibiotics	85/108(78.7)	16/16(100)	69/92(75.0)	0.021
Steroid therapy				
Corticosteroid/Glucocorticoid	35/95(36.9)	13/15(86.7)	22/80(27.5)	<0.0001
Oxygen support				
Non-invasive ventilation				<0.0001
No	79(73.2)	4(25.0)	75(81.5)	
Yes	29(26.8)	12(75.0)	17(18.5)	
Invasive ventilation				<0.0001
No	72(66.7)	2(12.5)	70(76.1)	
Yes	36(33.3)	14(87.5)	22(23.9)	
Complication				
Any complication	33(30.5)	17(18.5)	16(100)	<0.0001
Acute cardiac injury	14/108(13.0)	10/16(62.5)	4/92(4.4)	<0.0001
Arrhythmia	15/108(13.9)	8/16(50.0)	7/92(7.6)	0.0001
ARDS*	30/108(27.8)	15/16(93.6)	15/92(16.3)	<0.0001
Acute kidney injury	5/108(4.6)	2/16(12.5)	3/92(3.3)	0.16
Septic shock	11/108(10.2)	8/16(50.0)	3/92(3.3)	<0.0001
Secondary infection	5/108(4.6)	5/16(31.3)	0/92(0)	<0.0001

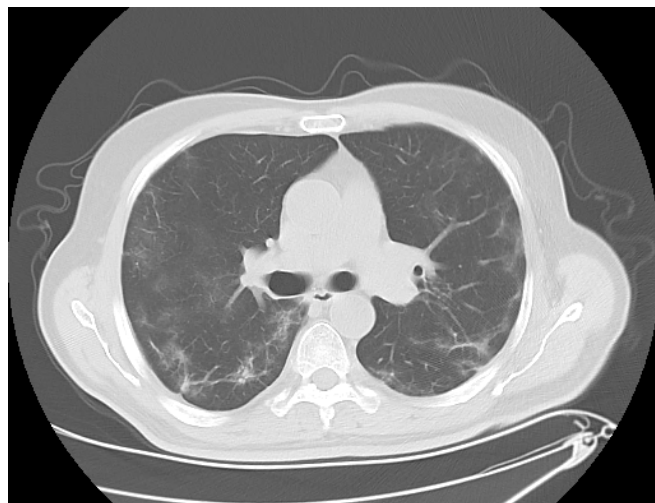
* Acute respiratory distress syndrome

Fig. S1

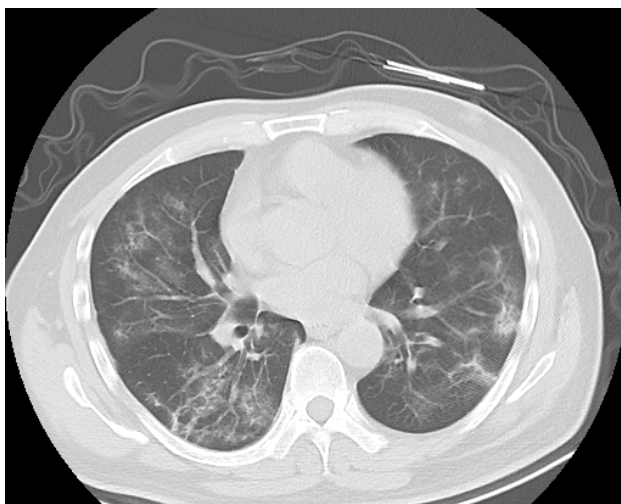
A1



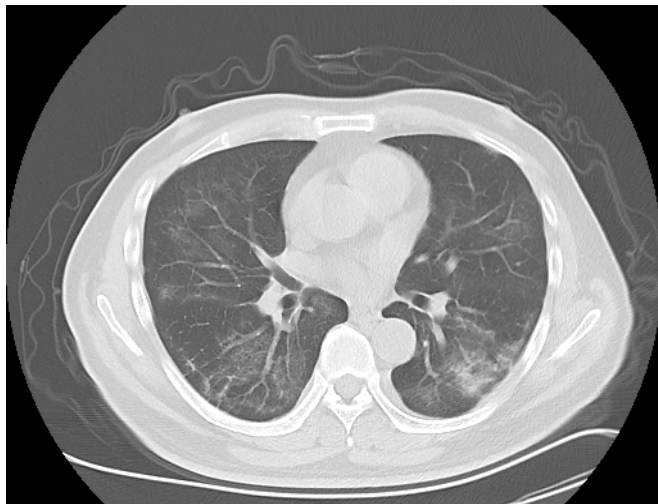
A2



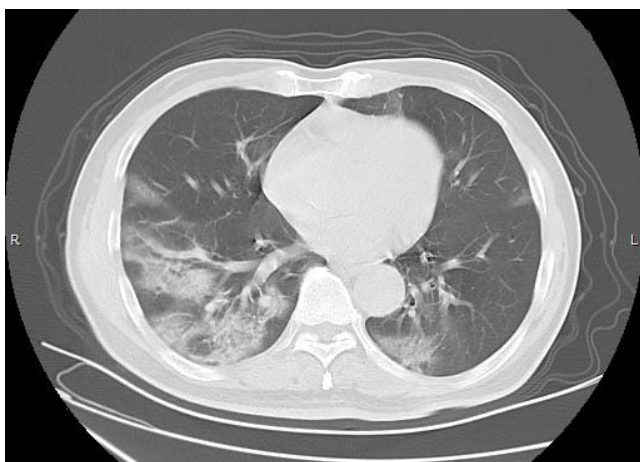
B1



B2



C1



C2

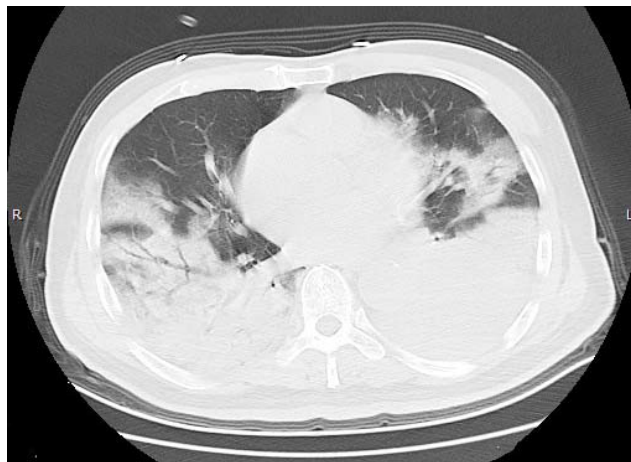


Fig. S2

A

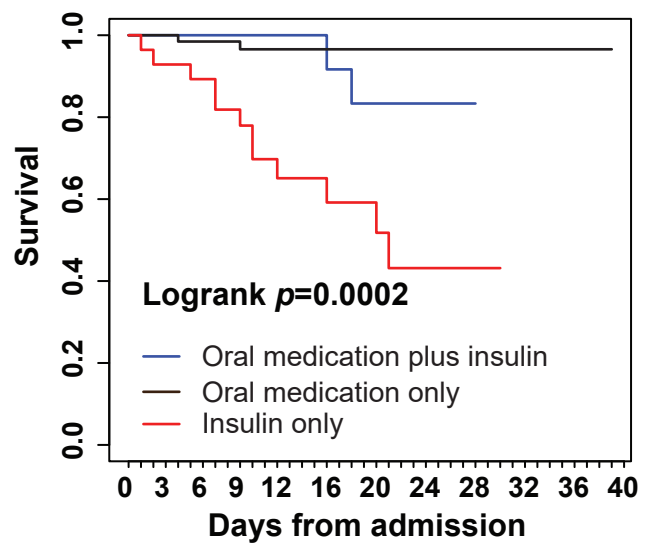
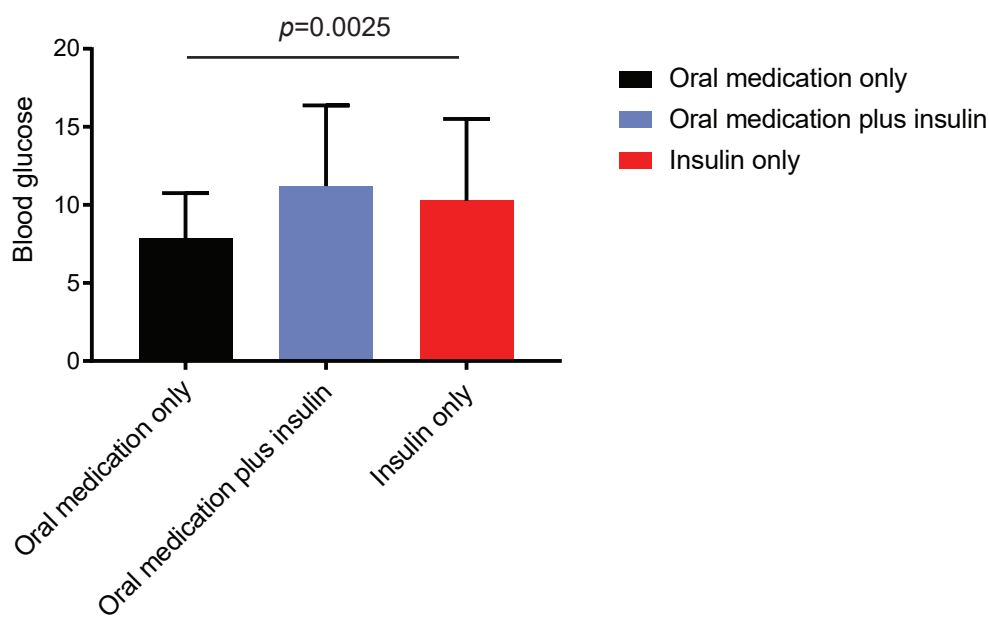


Fig. S3

A



Supplementary Figure Legends

Fig. S1 Representative dynamic changes in chest computer tomography (CT) scans between admission and discharge for the three diabetes treatment groups

(A1-A2) CT images of a 65-year-old male patient, whose blood glucose at admission was 9.4 mmol/L, and treated with metformin during hospitalization. A1 (day 1): lungs showed patchy ground glass shadows, and the internal blood vessels were running naturally; A2 (day 12): lung lesions were less and the boundary was clearer than before. (B1-B2) CT images of a 60-year-old male patient, whose blood glucose at admission was 8 mmol/L, and treated with acarbose and insulin during hospitalization. B1 (day1): lungs showed scattered patchy, cord shape fuzzy shadow, some parts showing ground glass density; B2 (day 12): density of lung lesions were decreased. (C1-C2) CT images of a 55-year-old male patient, whose blood glucose at admission was 18.1 mmol/L, treated with insulin during hospitalization, and died. C1 (day1): both lungs showed scattered patchy ground glass shadows, some lesions were consolidated, and air bronchi signs were seen inside; C2 (day 4): foci of the two lung diseases were more advanced, and most of the lesions were solid, with air bronchi signs inside and a small amount of effusion in the left thoracic cavity.

Fig. S2 Survival analysis for three diabetes treatment groups

(A) Kaplan-Meier curves demonstrating survival of COVID-19 patients with T2D by diabetes treatment. *P* values for survival analysis were derived by the log-rank test.

Fig. S3 Blood glucose level on three diabetes treatment groups

(A) Distribution of blood glucose in three diabetes treatment groups was significantly different (Mean±SD, $p=0.0025$).