

SUPPLEMENTARY CONTENT

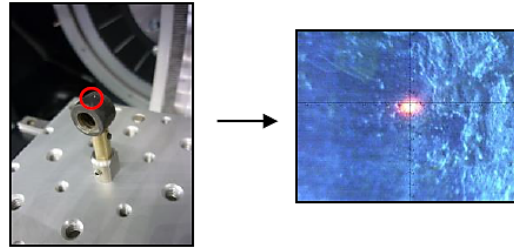


Fig. 1. 4330 steel electrode in the equipment of X-Ray Diffraction.

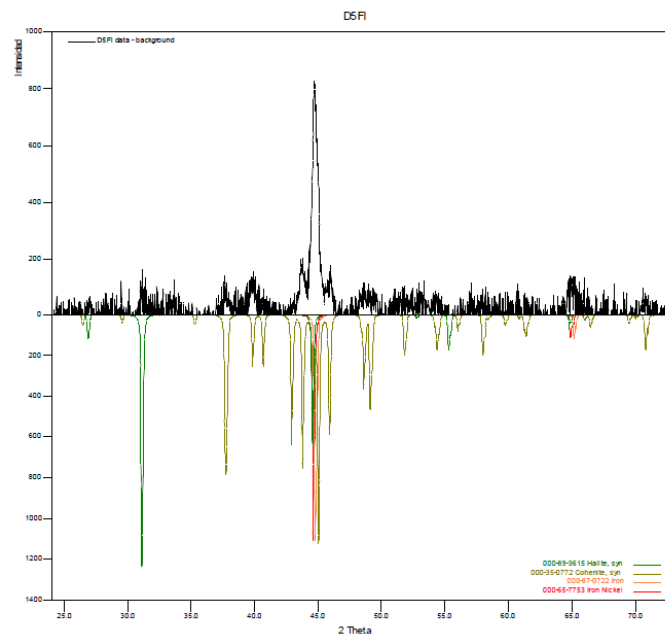


Fig. 2. XRD spectra of 4330 steel electrode surface after test in a solution containing 3 wt.% NaCl and 10 wt.% sand at 2800 rpm - pH 7 – 105 μm

Table 1. Crystalline phases determined by XRD applied to the 4330 steel electrode surface after test in a solution containing 3 wt.% NaCl and 10 wt.% sand at 2800 rpm - pH 7 – 105 μm

Phase		Name
Crystalline	SiO_2	Quartz
	Fe_3O_4	Magnetite
	NaCl	Halite
	Fe	Iron

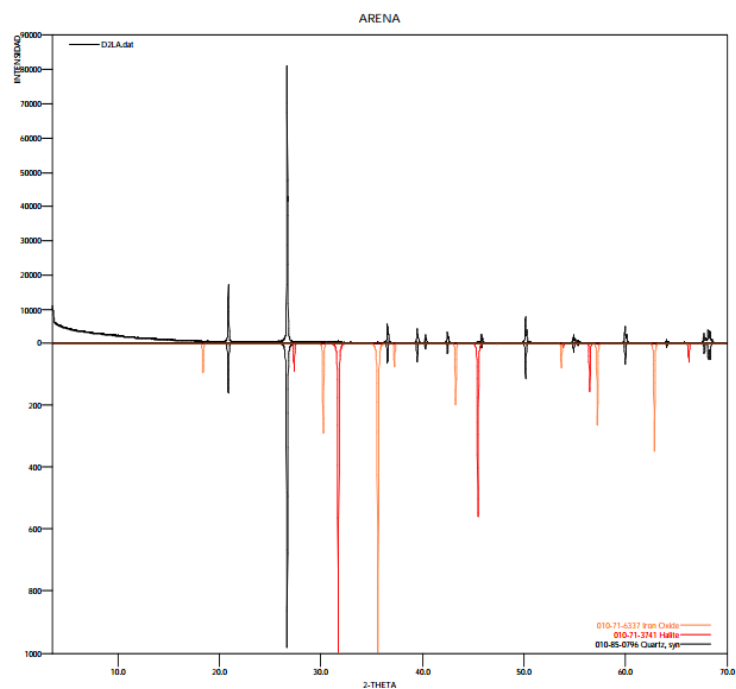


Fig. 3. XRD spectra of the sand particles after test in a solution containing 3 wt.% NaCl and 10 wt.% sand at 1800 rpm - pH 3- 53 μm

Table 2. Crystalline phases determined by XRD applied to the sand particles after test in a solution containing 3 wt.% NaCl and 10 wt.% sand at 1800 rpm - pH 3- 53 μm

Phase		Name
Crystalline	SiO_2	Quartz
	Fe_2O_3	Hematite
	NaCl	Halite