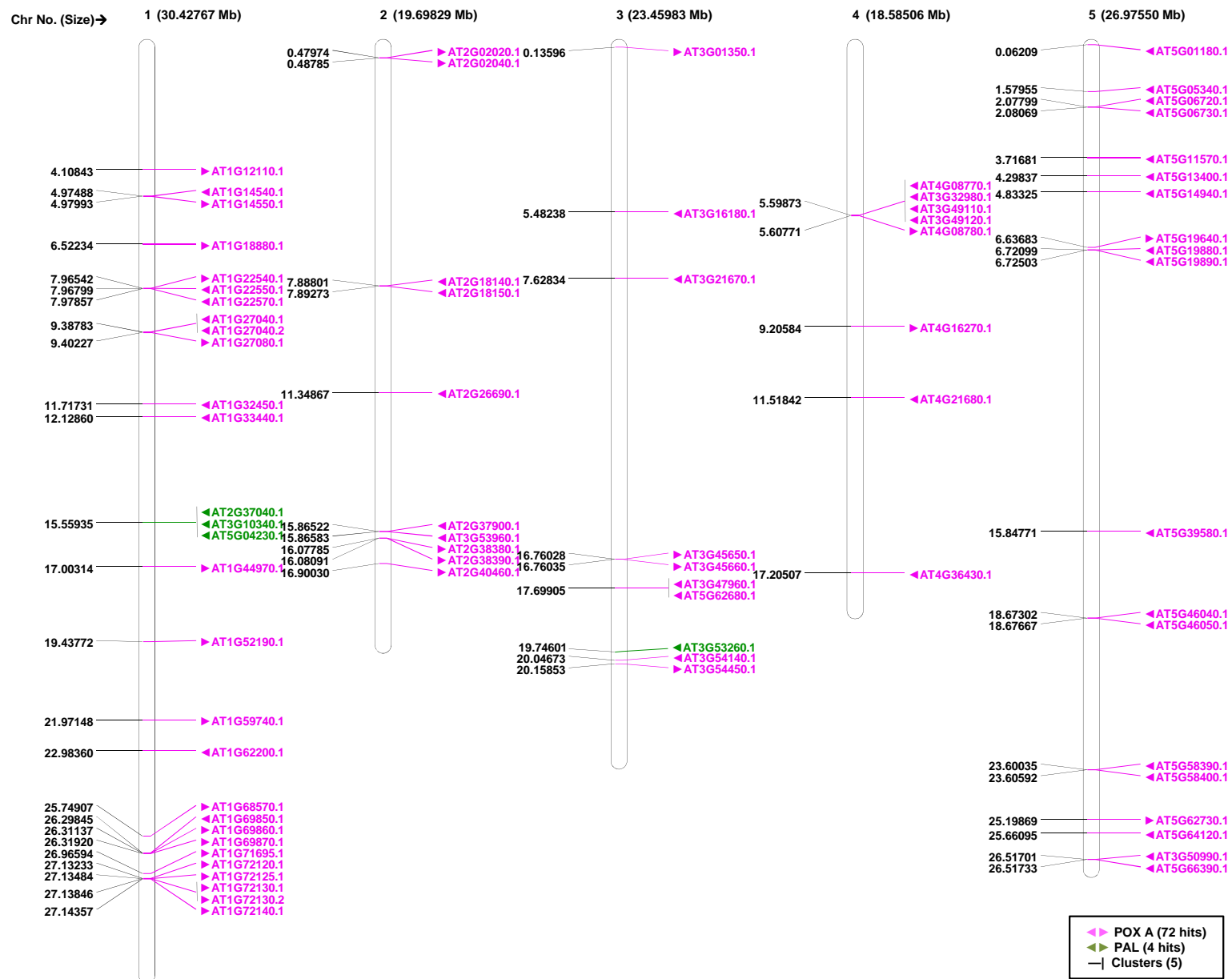
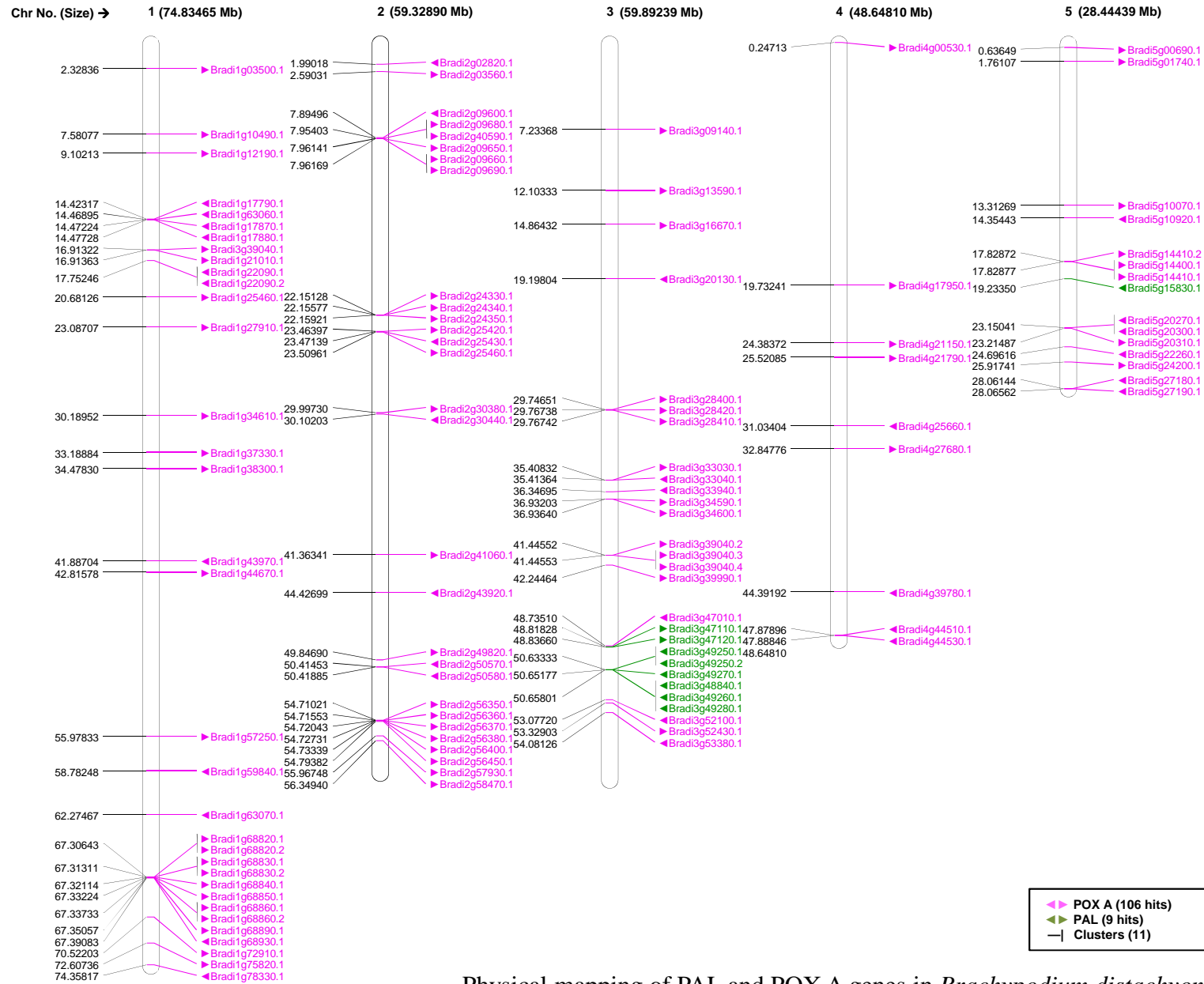


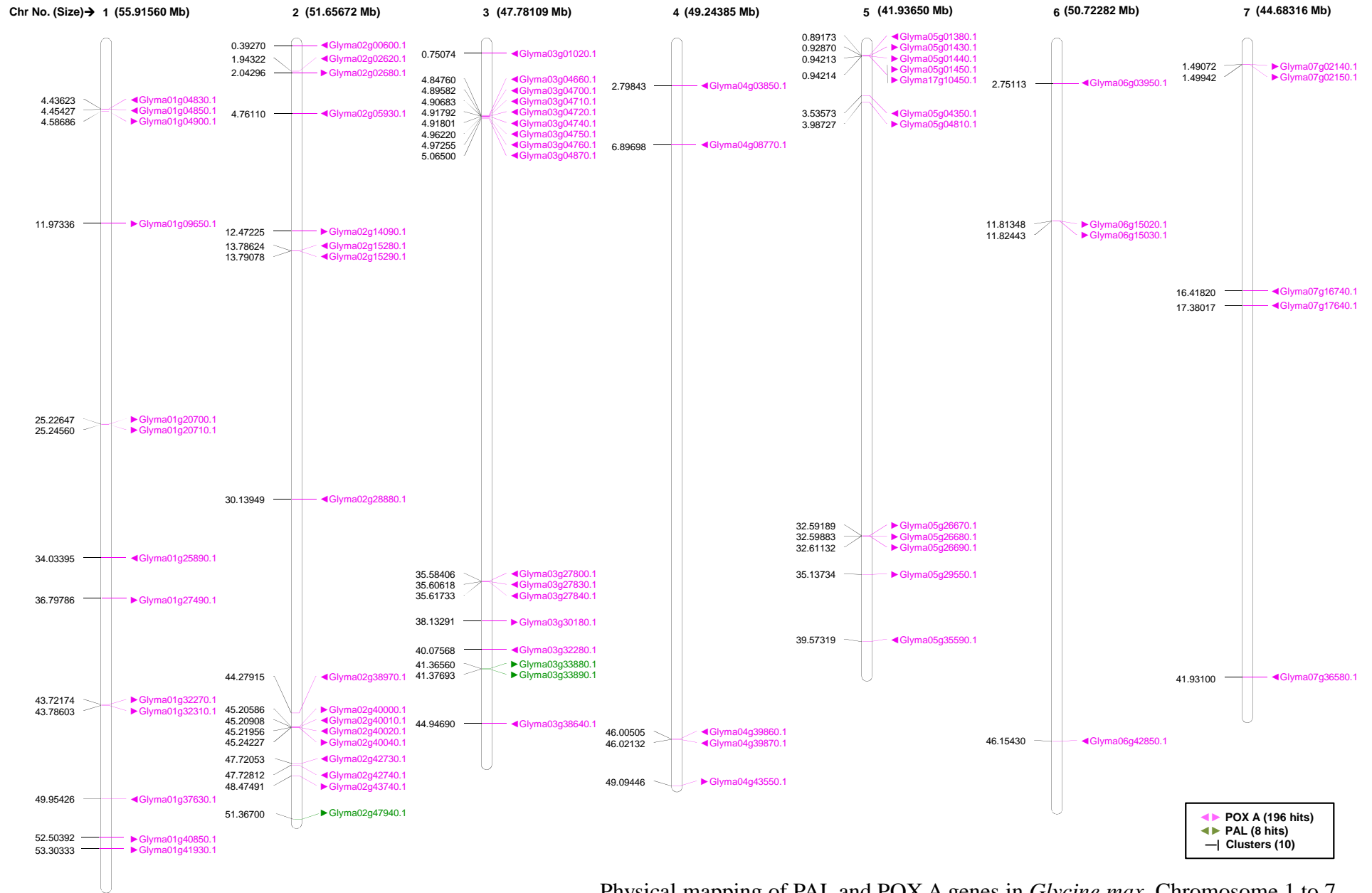
Physical mapping of PAL and POX A genes in *Arabidopsis thaliana*; *Brachypodium distachyon*; *Glycine max*; *Medicago truncatula*; *Vitis vinifera*; *Populus trichocarpa*; *Zea mays*; *Oryza sativa* and *Sorghum bicolor*. Physical positions of genes are given in base pairs on left side. Gene ID and their forward and reverse directions are shown on right side. Chromosome length is given on the top. Colour codes indicates PAL (green) and POX A (pink) genes.



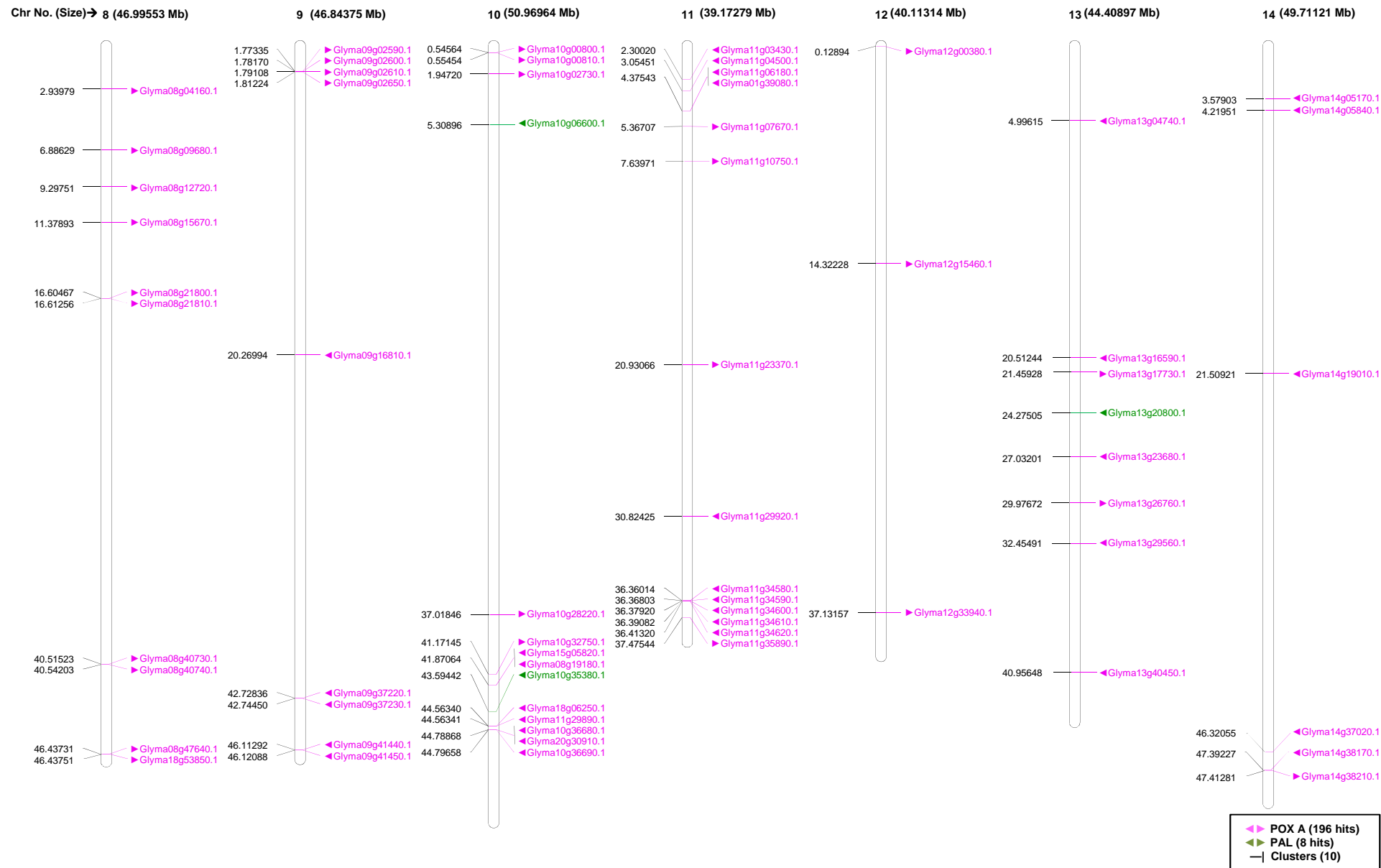
Physical mapping of PAL and POX A genes in *Arabidopsis thaliana*



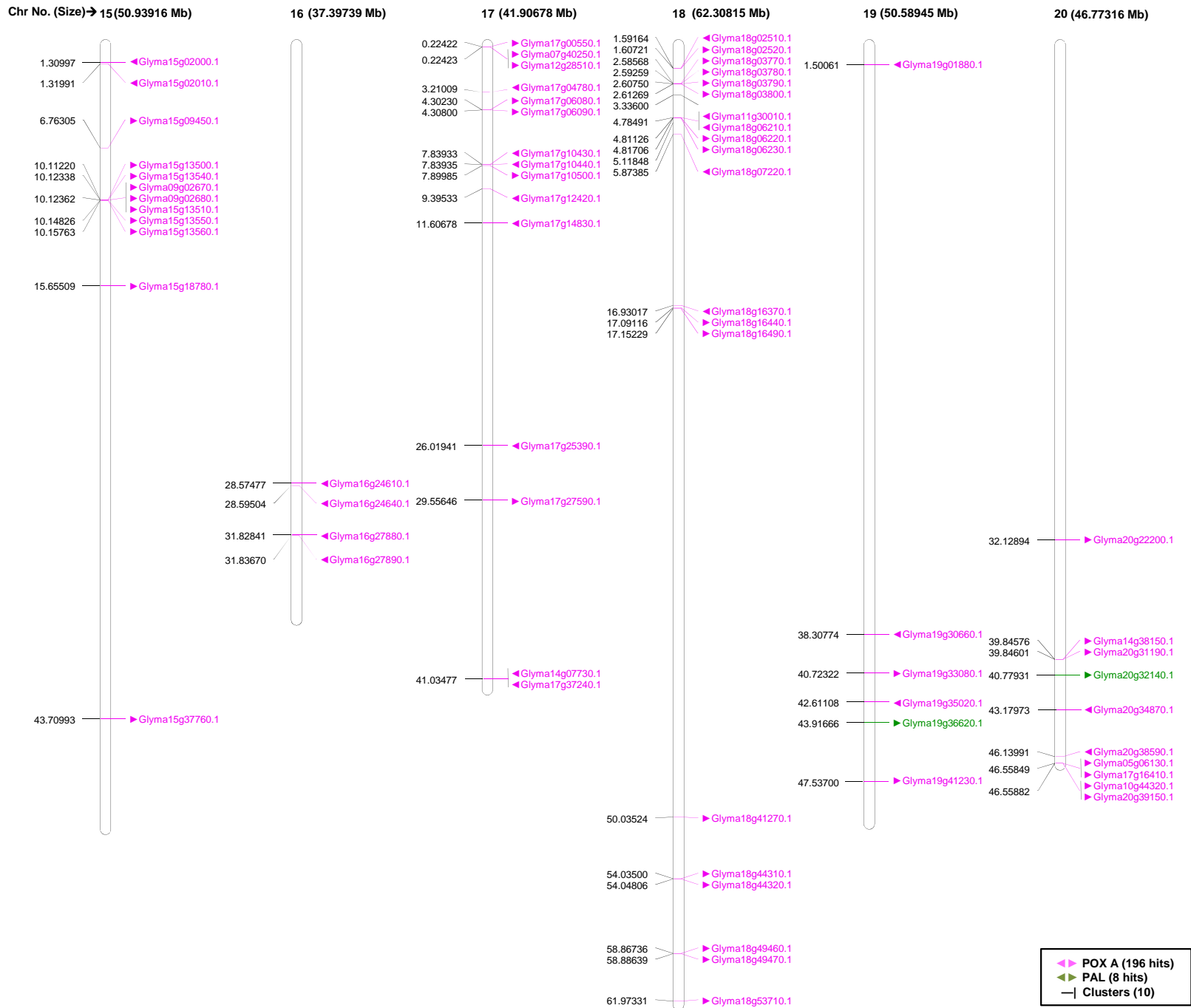
Physical mapping of PAL and POX A genes in *Brachypodium distachyon*



Physical mapping of PAL and POX A genes in *Glycine max*, Chromosome 1 to 7



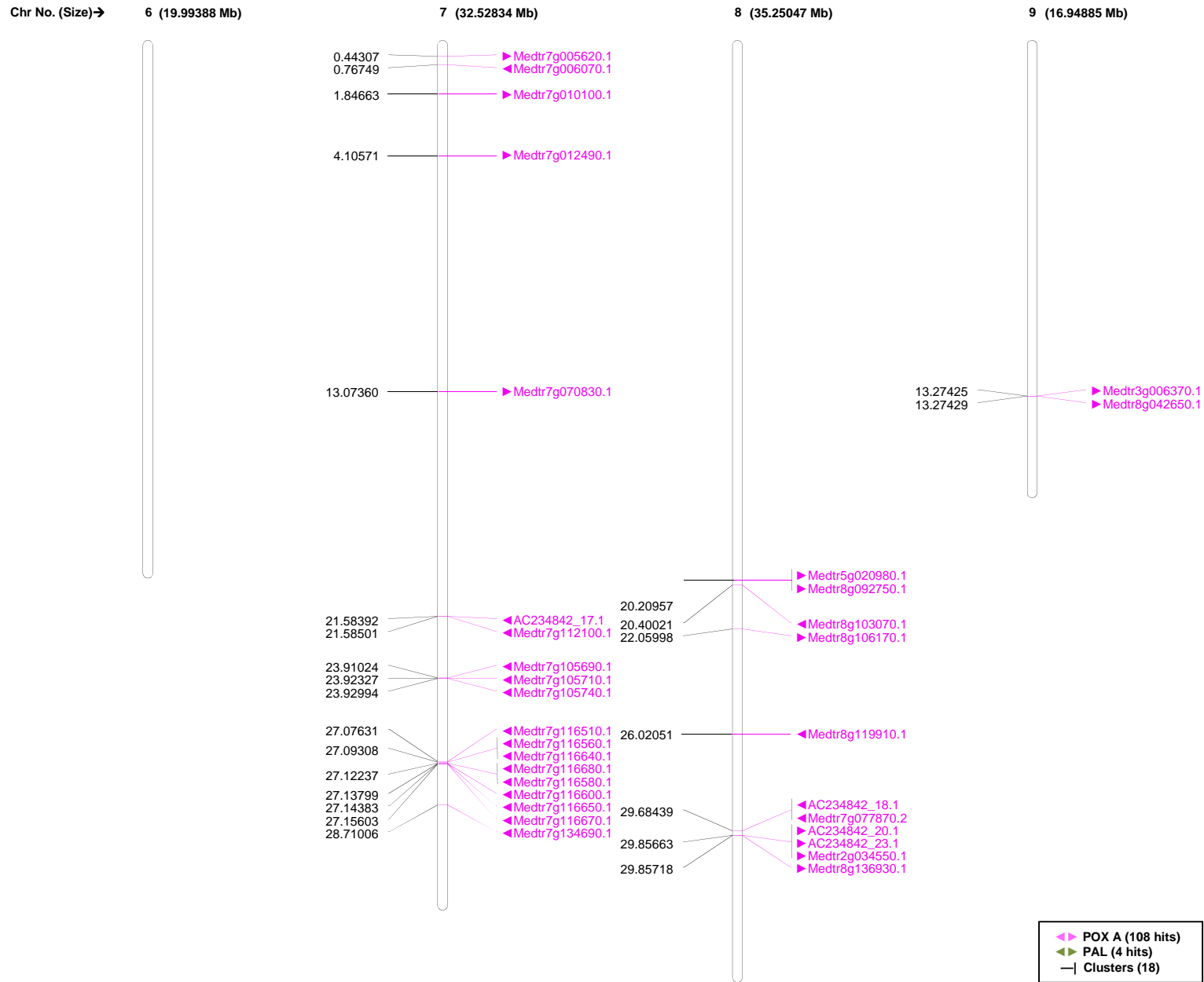
Physical mapping of PAL and POX A genes in *Glycine max*, Chromosome 7 to 14



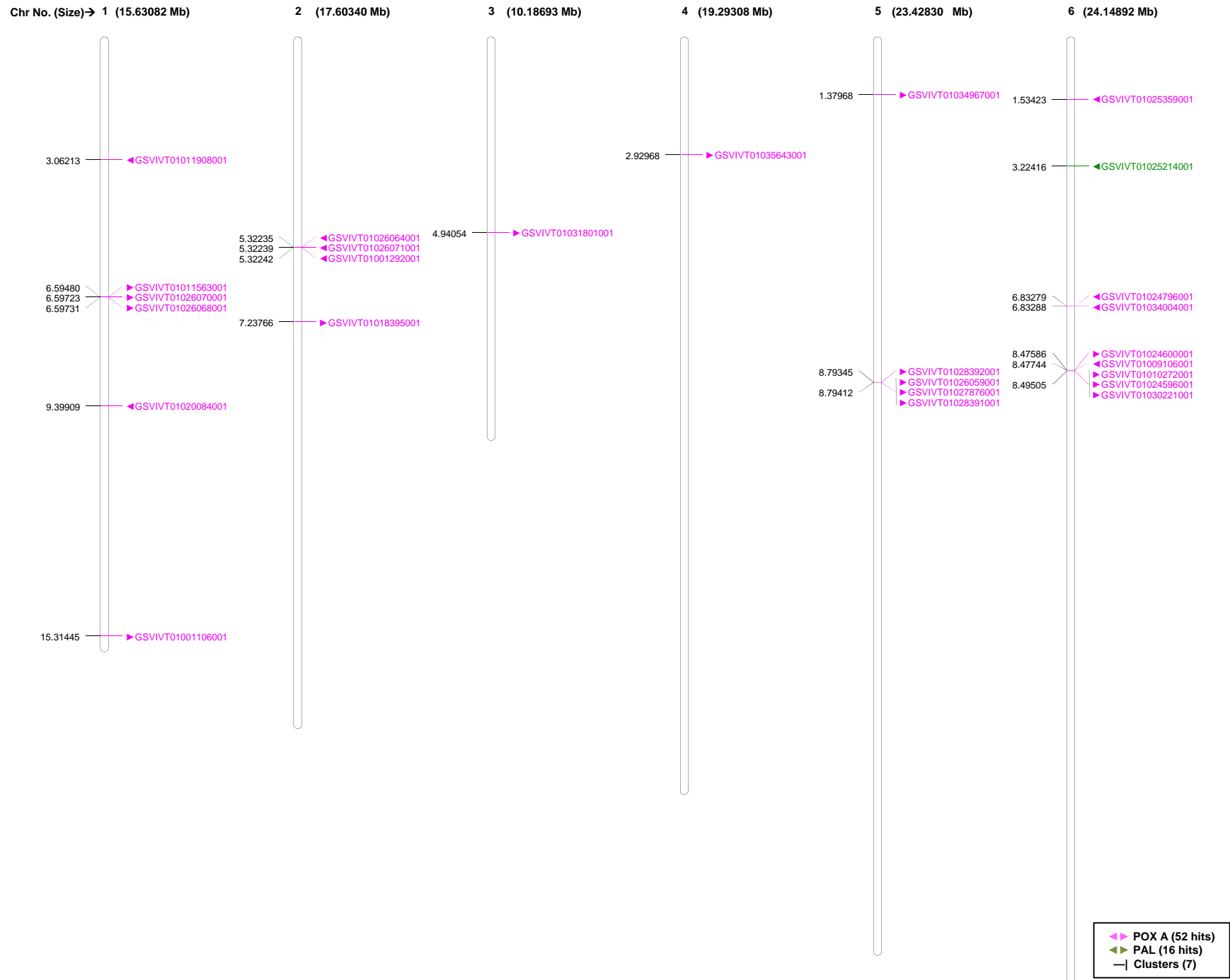
Physical mapping of PAL and POX A genes in *Glycine max* Chromosome 15 to 20



Physical mapping of PAL and POX A genes in *Medicago truncatula*, Chromosome 1 to 5



Physical mapping of PAL and POX A genes in *Medicago truncatula*, Chromosome 6 to 9



Physical mapping of PAL and POX A genes in *Vitis vinifera*, Chromosome 1 to 6

Chr No. (Size)→ 7 (15.23375 Mb)

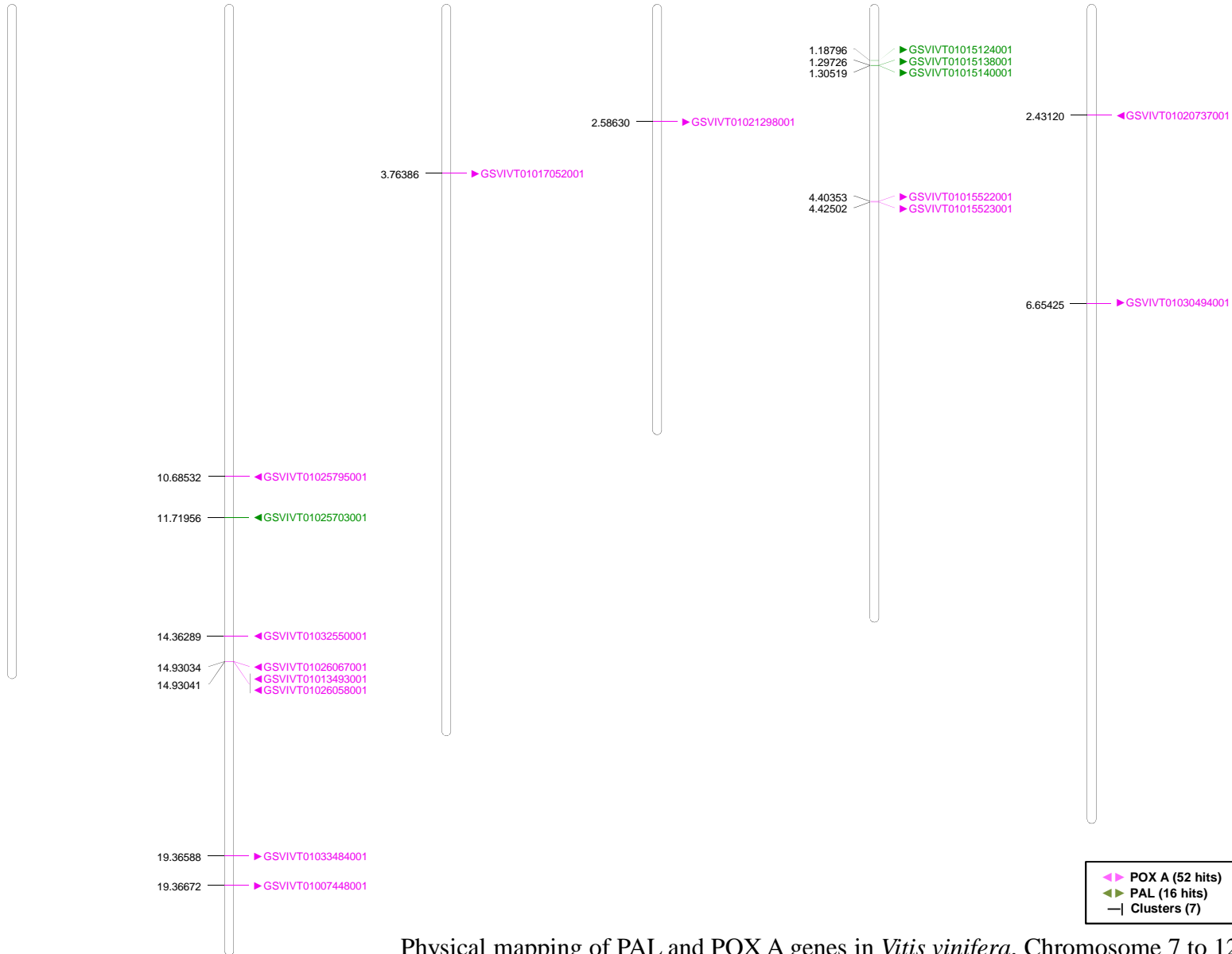
8 (21.55723 Mb)

9 (16.53224 Mb)

10 (9.64704 Mb)

11 (13.93630 Mb)

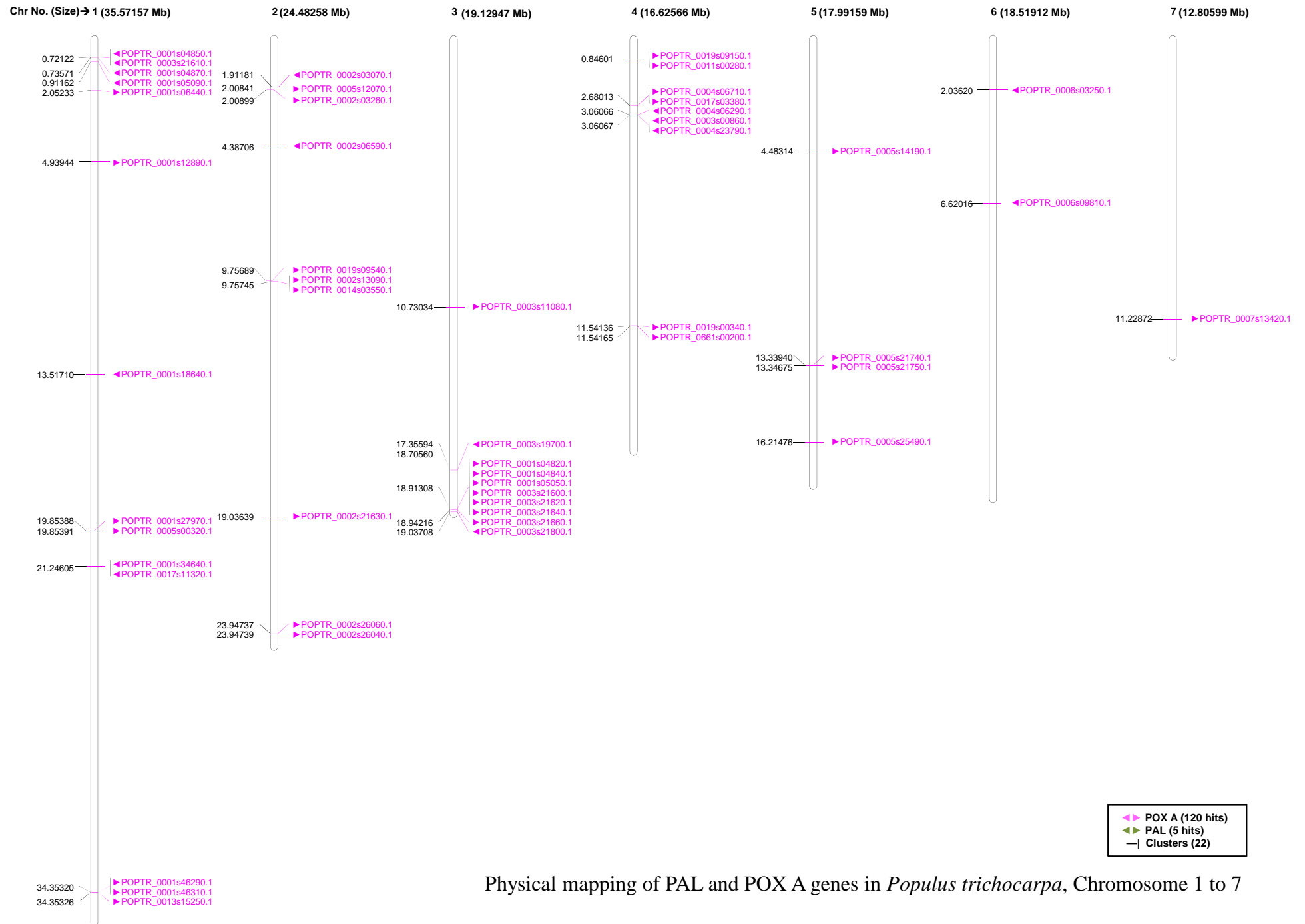
12 (18.54082 Mb)



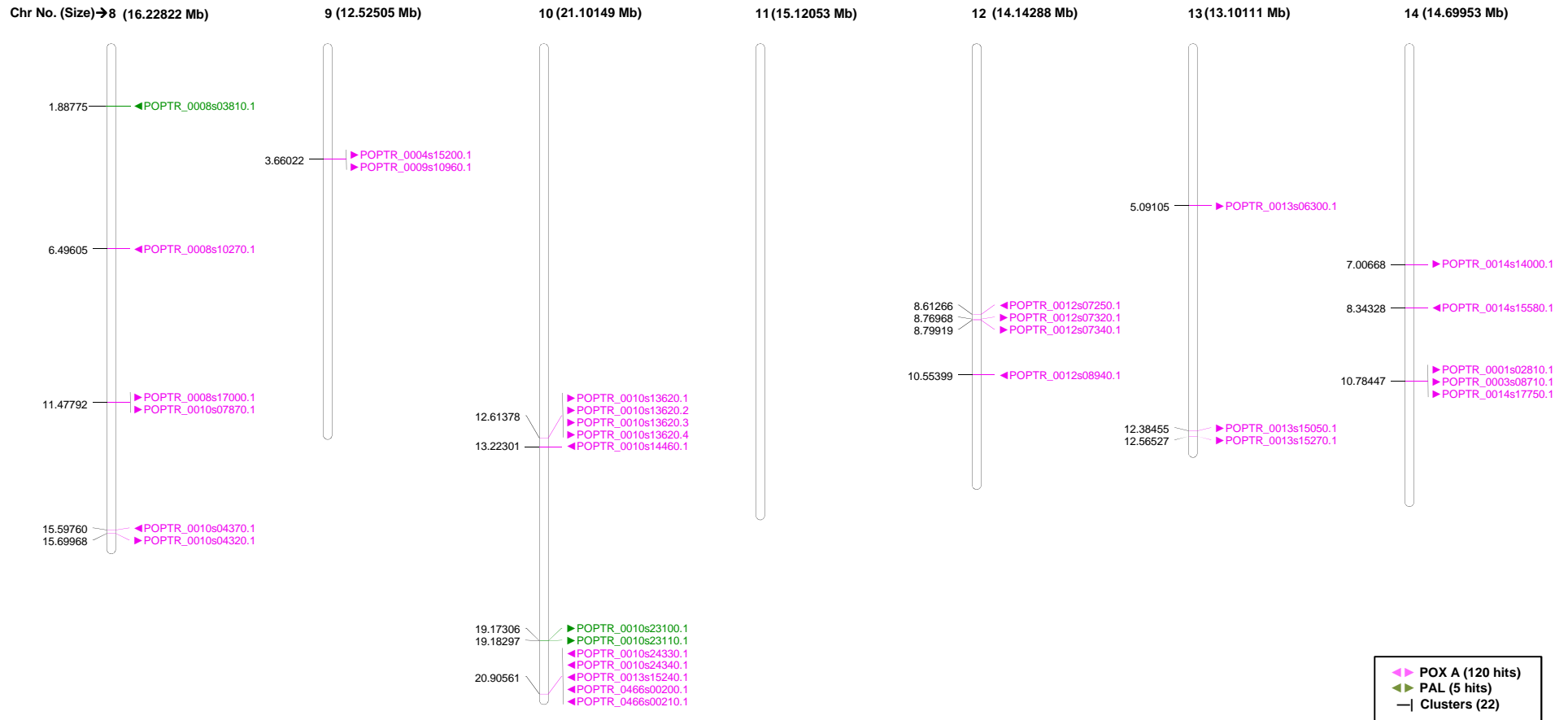
Physical mapping of PAL and POX A genes in *Vitis vinifera*, Chromosome 7 to 12



Physical mapping of PAL and POX A genes in *Vitis vinifera*, Chromosome 13 to 19



Physical mapping of PAL and POX A genes in *Populus trichocarpa*, Chromosome 1 to 7



Physical mapping of PAL and POX A genes in *Populus trichocarpa*, Chromosome 8 to 14

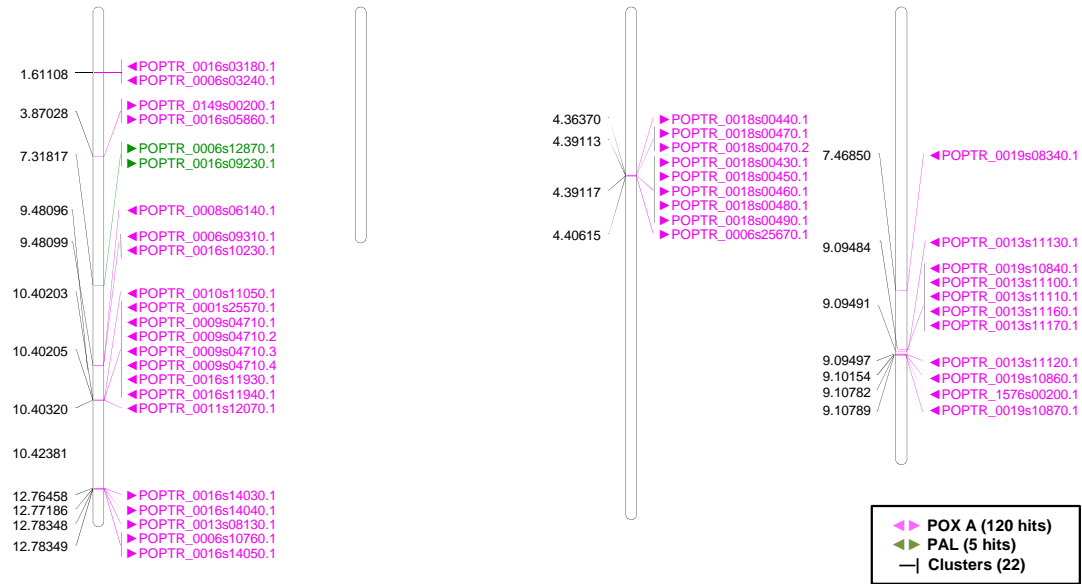
Chr No. (Size)→ 15 (10.59969 Mb)

16 (13.66151 Mb)

17 (6.06012 Mb)

18 (13.47099 Mb)

19 (12.00370 Mb)

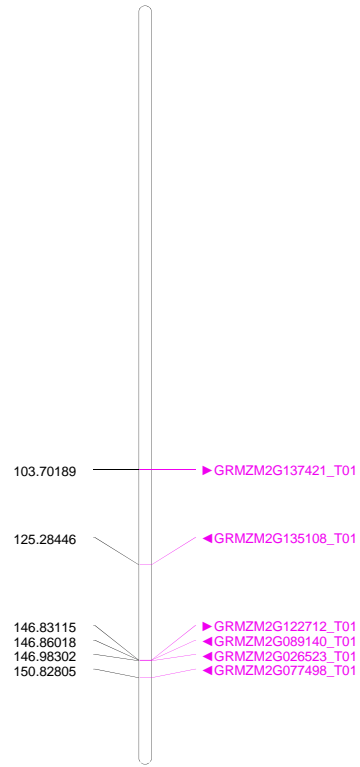


Physical mapping of PAL and POX A genes in *Populus trichocarpa*, Chromosome 15 to 19



Physical mapping of PAL and POX A genes in *Zea mays*, Chromosome 1 to 5

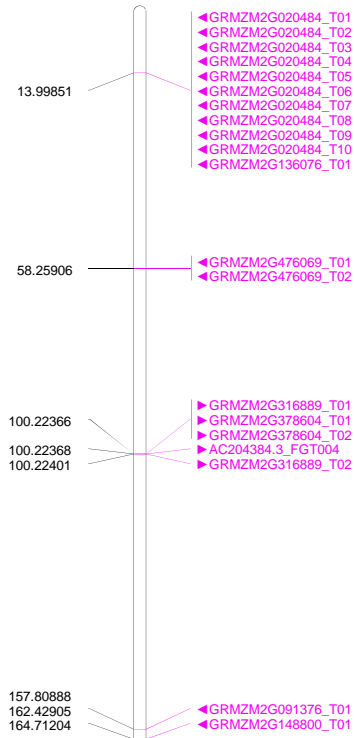
Chr No. (Size) → 6 (169.25430 Mb)



7 (170.97418 Mb)



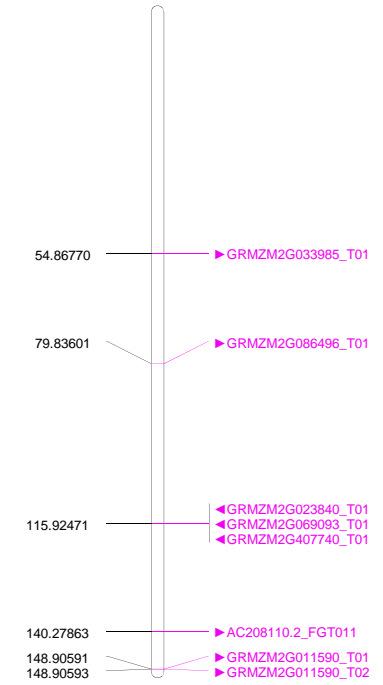
8 (174.51534 Mb)



9 (152.35049 Mb)

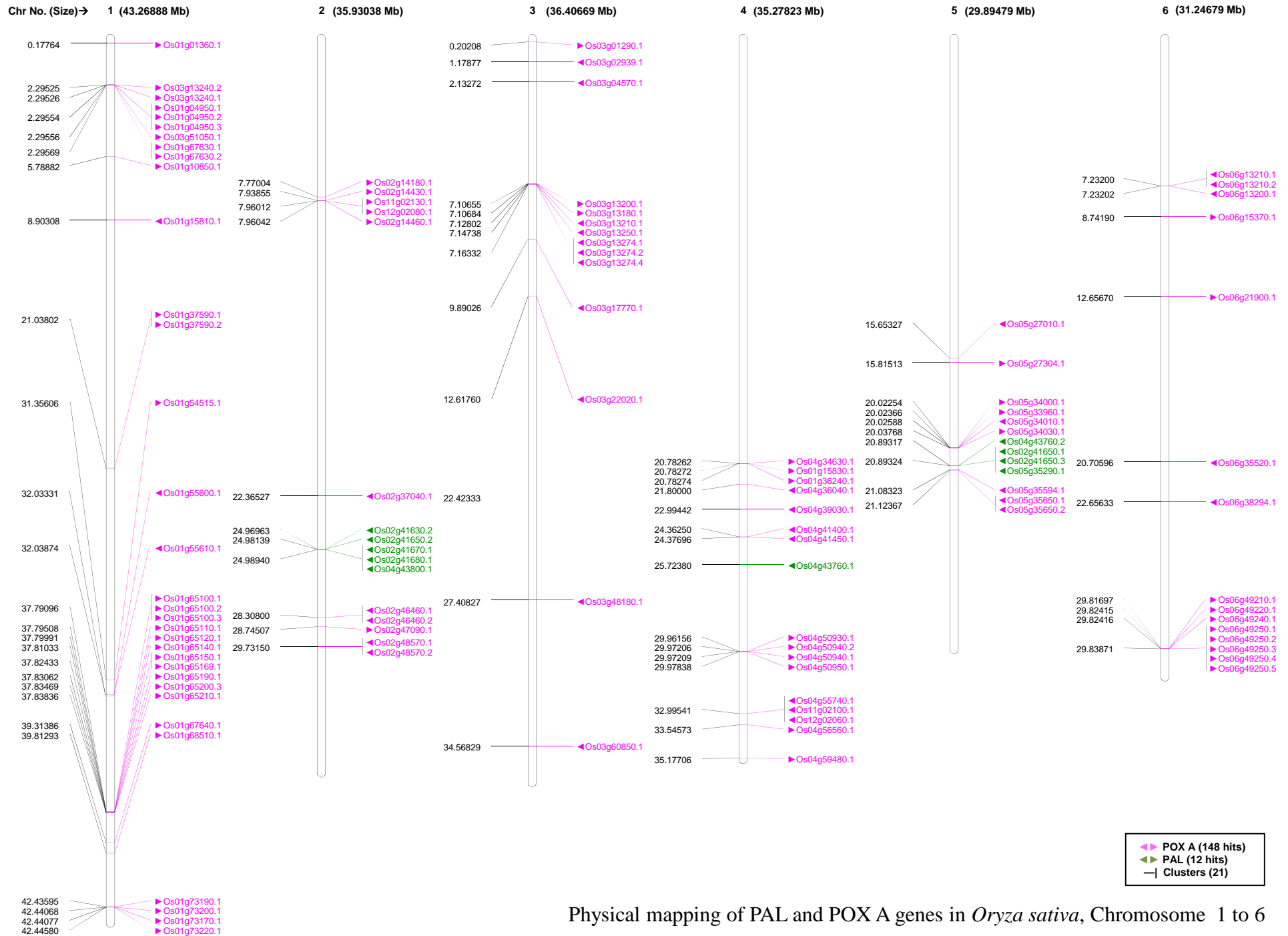


10 (149.68605 Mb)

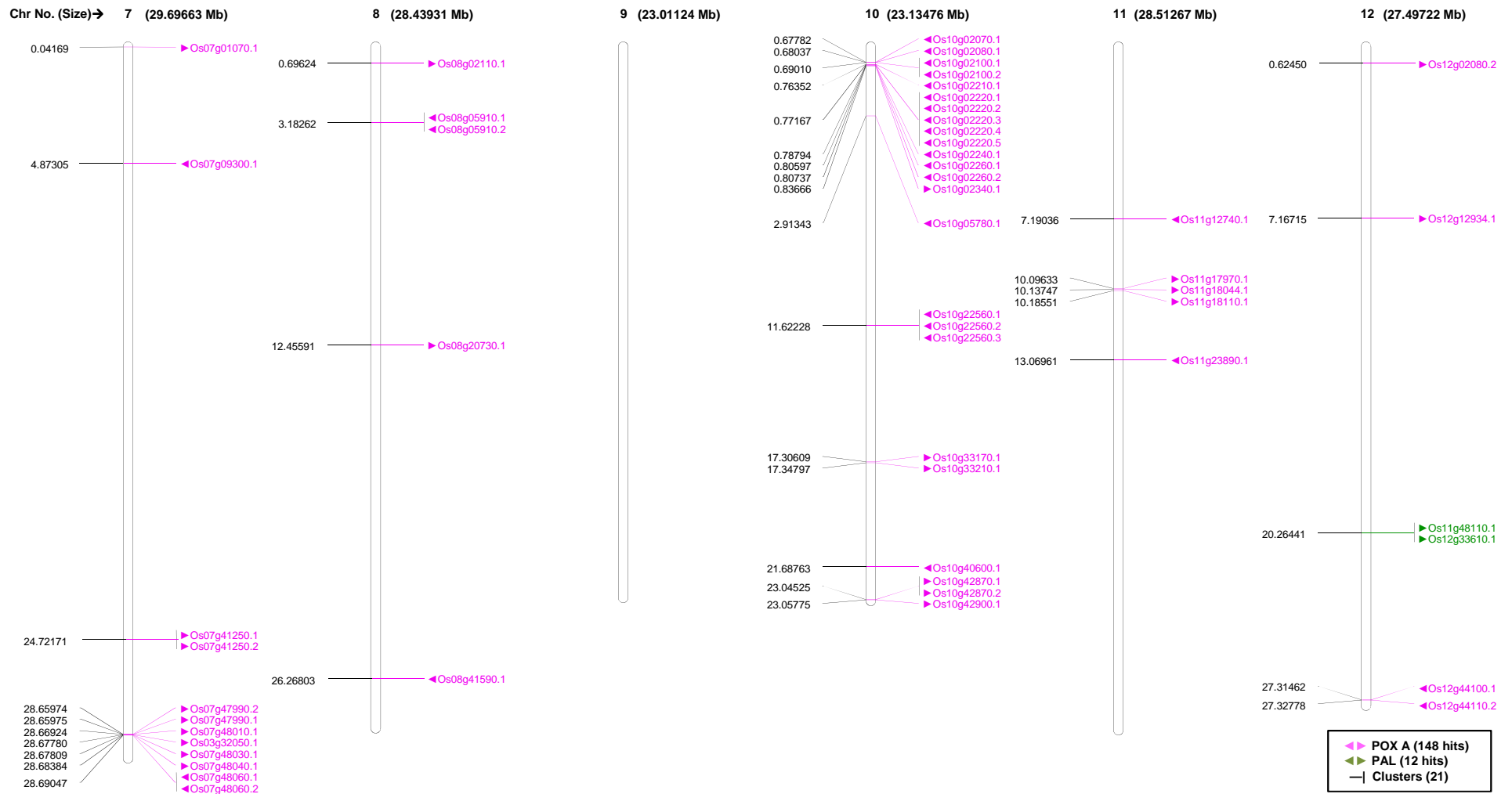


◀▶ POX A (128 hits)
 ▶◀ PAL (20 hits)
 — Clusters (23)

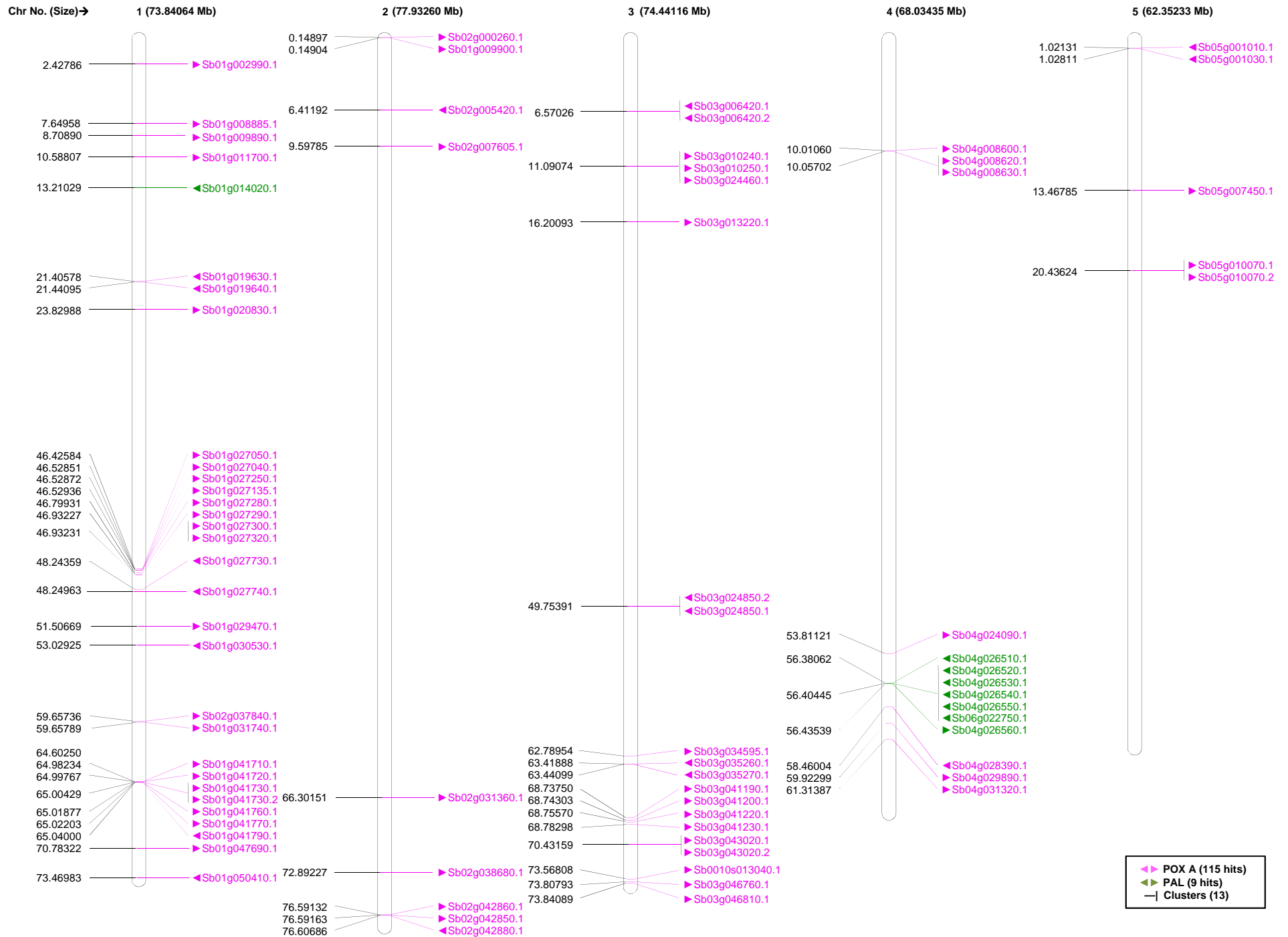
Physical mapping of PAL and POX A genes in *Zea mays*, Chromosome 5 to 10



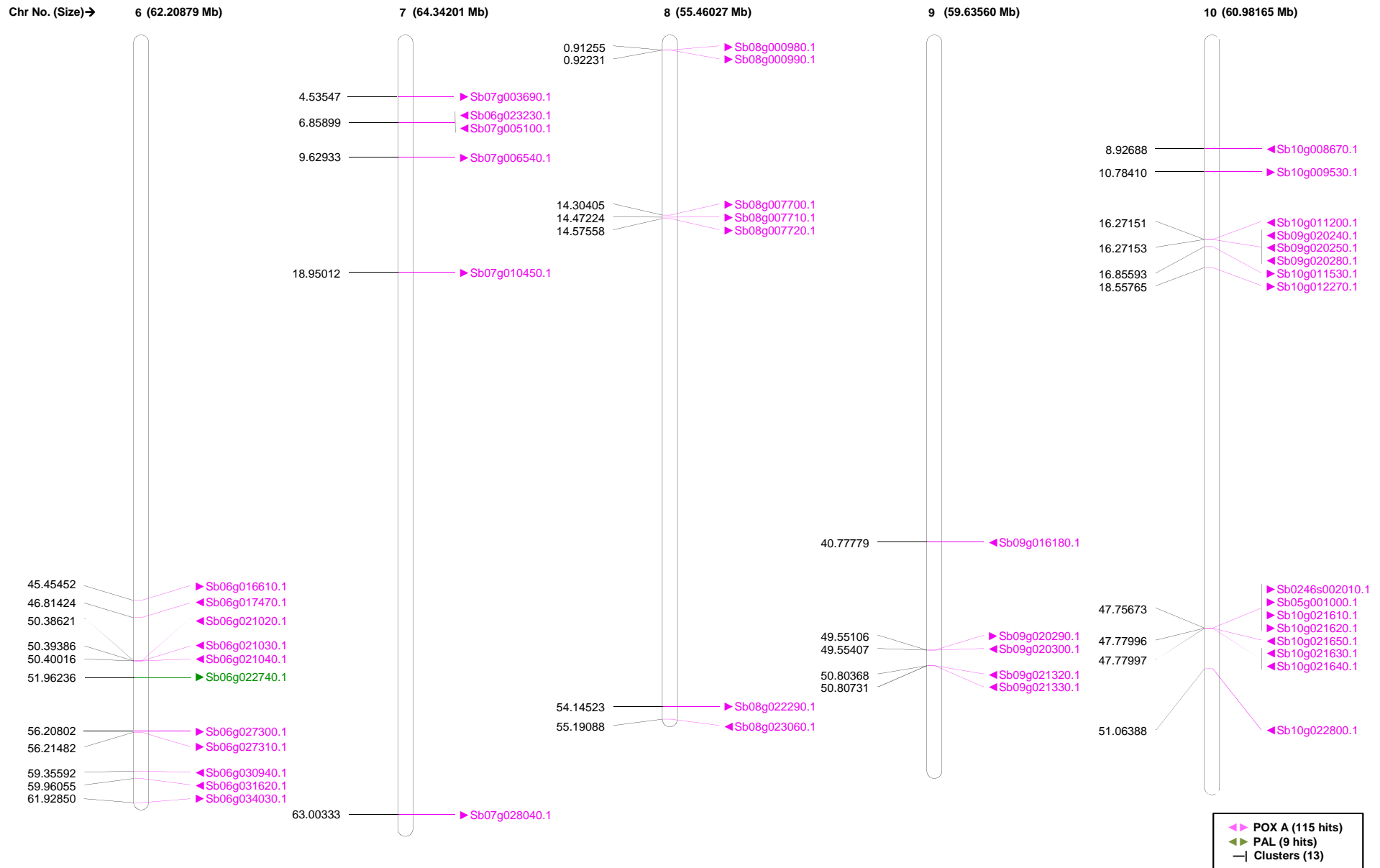
Physical mapping of PAL and POX A genes in *Oryza sativa*, Chromosome 1 to 6



Physical mapping of PAL and POX A genes in *Oryza sativa*, Chromosome 7 to 12



Physical mapping of PAL and POX A genes in *Sorghum bicolor*, Chromosome 1 to 5



Physical mapping of PAL and POX A genes in *Sorghum bicolor*, Chromosome 6 to 10