

**Supplementary Table 1 Meta-analysis of the *NFKB1* -94ins/del ATTG promoter polymorphism and cancer risk among the studies which did not deviated from HWE**

Variable	<i>n</i> <sup>a</sup>	Cases / Controls	ins/ins versus del/del		ins/del versus del/del		ins/ins + ins/del vs. del/del (dominant)		ins/ins vs. ins/del + del/del (recessive)		ins allele vs. del allele	
			OR (95% CI)	<i>I</i> <sup>2</sup> (%)	OR (95% CI)	<i>I</i> <sup>2</sup> (%)	OR (95% CI)	<i>I</i> <sup>2</sup> (%)	OR (95% CI)	<i>I</i> <sup>2</sup> (%)	OR (95% CI)	<i>I</i> <sup>2</sup> (%)
Total	15	3968/6473	<b>1.65 (1.17–2.32)<sup>b</sup></b>	86.2	<b>1.28 (1.03–1.60)<sup>b</sup></b>	70.5	<b>1.41 (1.09–1.83)<sup>b</sup></b>	81.2	<b>1.33 (1.08–1.63)<sup>b</sup></b>	<b>80.7</b>	<b>1.26 (1.07–1.49)<sup>b</sup></b>	86.3
Cancer types												
Bladder cancer	3	1058/1175	1.07 (0.45–2.53) <sup>b</sup>	90.1	1.00 (0.46–2.18) <sup>b</sup>	88.8	1.04 (0.46–2.33) <sup>b</sup>	90.7	1.04 (0.73–1.48) <sup>b</sup>	72.7	1.03 (0.70–1.51) <sup>b</sup>	89.0
Ovarian Cancer	2	366/444	<b>2.57 (1.66–3.98)</b>	0	<b>1.88 (1.23–2.89)</b>	0	<b>2.17 (1.45–3.25)</b>	0	<b>1.59 (1.19–2.11)</b>	0	<b>1.55 (1.27–1.90)</b>	0
Oral Cancer	2	674/721	<b>2.10 (1.54–2.87)</b>	33.0	<b>1.42 (1.10–1.83)</b>	0	<b>1.59 (1.25–2.03)</b>	3.9	<b>1.67 (1.29–2.17)</b>	0	<b>1.43 (1.23–1.66)</b>	6.9
Prostate Cancer	2	451/477	<b>1.59 (1.09–2.33)</b>	23.0	1.28 (0.89–1.84)	28.6	1.40 (1.00–1.98)	35.8	<b>1.33 (1.01–1.74)</b>	0	<b>1.26 (1.05–1.52)</b>	0
Other Cancers	6	1419/3656	1.66 (0.90–3.06) <sup>b</sup>	89.0	1.19 (0.99–1.43)	40.4	1.39 (0.95–2.04) <sup>b</sup>	77.6	1.35 (0.88–2.08) <sup>b</sup>	89.1	<b>1.26 (0.93–1.71)<sup>b</sup></b>	90.0
Ethnicities												
Asian	11	2686/3380	<b>2.05 (1.34–3.14)<sup>b</sup></b>	85.6	<b>1.40 (1.03–1.91)<sup>b</sup></b>	77.1	<b>1.62 (1.15–2.29)<sup>b</sup></b>	83.7	<b>1.56 (1.26–1.92)<sup>b</sup></b>	68.8	<b>1.41 (1.16–1.71)<sup>b</sup></b>	83.9
Caucasian	4	1282/3093	0.93 (0.65–1.32) <sup>b</sup>	64.7	1.04 (0.85–1.27)	0	0.97 (0.81–1.17)	33.8	0.88 (0.68–1.14) <sup>b</sup>	68.6	0.94 (0.78–1.13) <sup>b</sup>	70.2

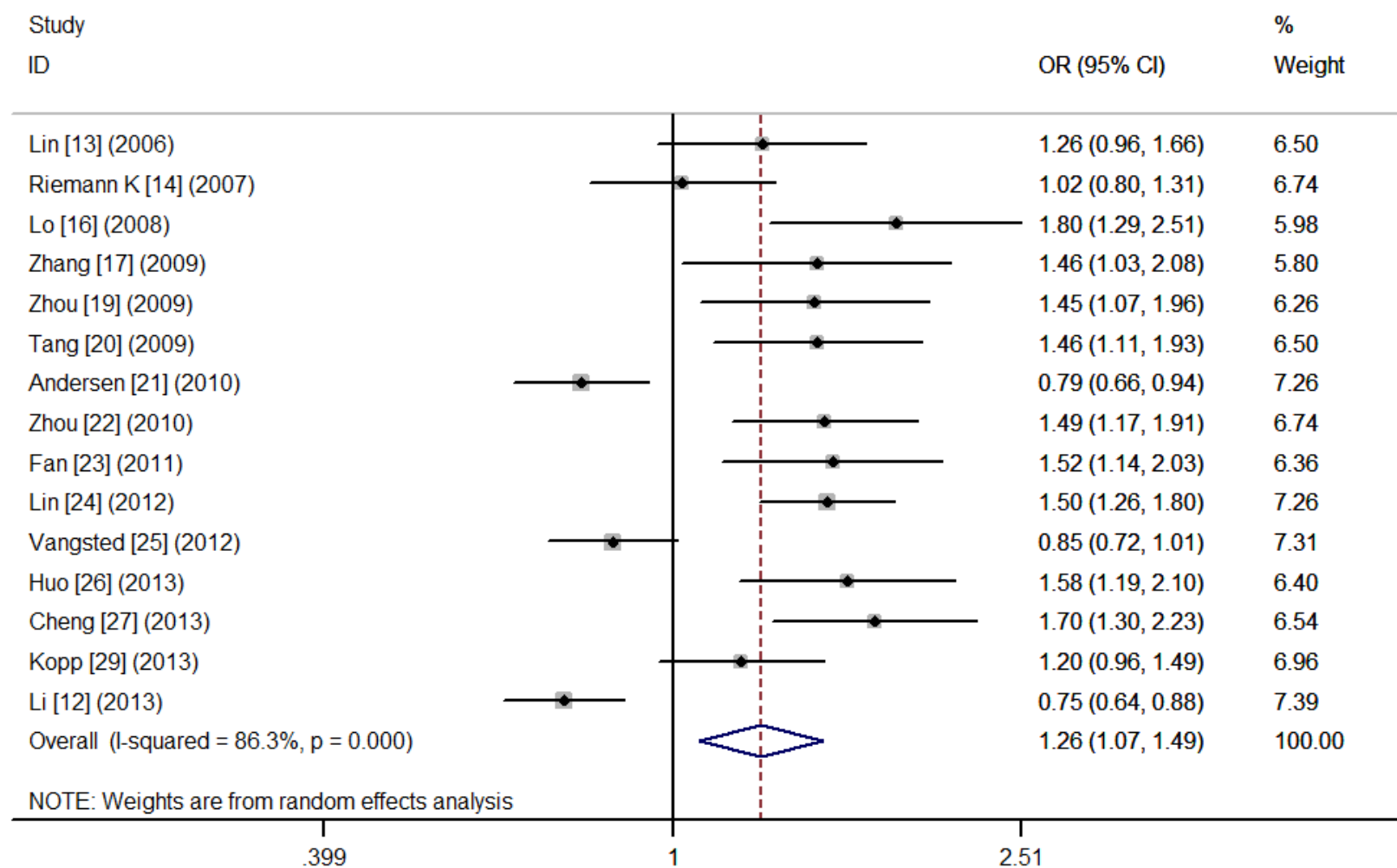
<sup>a</sup> Number of comparisons

<sup>b</sup> Random effects estimate

**Supplementary Table 2 Egger's linear regression test to measure the funnel plot asymmetric**

Comparisons	ins/ins versus del/del		ins/del versus del/del		ins/ins + ins/del vs. del/del		ins/ins vs. ins/del + del/del		ins allele vs. del allele	
	A (95% CI)	<i>P</i> value	A (95% CI)	<i>P</i> value	A (95% CI)	<i>P</i> value	A (95% CI)	<i>P</i> value	A (95% CI)	<i>P</i> value
Total	7.06 (3.04–11.1)	0.002	4.08 (1.90–6.25)	0.001	5.27 (2.39–8.16)	0.001	4.66 (1.24–8.08)	0.010	5.48 (1.94–9.02)	0.004
Cancer types										
Bladder cancer	9.96 (-42.5–62.4)	0.250	8.01 (3.76–12.3)	0.027	9.14 (-12.6–30.9)	0.118	6.57 (-59.1–72.2)	0.424	10.0 (-38.2–58.2)	0.231
Colorectal Cancer	11.4 (-7.80–30.5)	0.125	-6.03 (-21.7–9.62)	0.239	0.83 (-32.2–33.8)	0.924	8.66 (-7.39–24.7)	0.146	10.1 (-2.77–23.0)	0.078
Ovarian Cancer	-	-	-	-	-	-	-	-	-	-
Oral Cancer	-	-	-	-	-	-	-	-	-	-
Prostate Cancer	-	-	-	-	-	-	-	-	-	-
Other Cancers	6.85 (0.89–12.8)	0.031	3.80 (0.80–6.81)	0.021	4.97 (1.05–8.89)	0.021	4.49 (-0.93–9.91)	0.089	4.66 (-0.23–9.55)	0.058
Ethnicities										
Asian	7.92 (3.06–12.8)	0.004	4.56 (1.44–7.70)	0.008	6.02 (2.09–9.95)	0.006	4.81 (1.59–8.03)	0.007	5.54 (1.54–9.54)	0.011
Caucasian	4.67 (0.36–8.99)	0.039	3.11 (-0.04–6.27)	0.052	3.36 (-5.10–11.8)	0.354	3.91 (1.28–6.55)	0.012	4.47 (-0.66–9.60)	0.075

A: Y axle intercept



Supplementary Figure 1. Forest plot of cancer risk associated with NFKB1 promoter -94ins/del ATTG polymorphism (for Insertion allele vs. Deletion allele) among the studies which did not deviated from HWE