

Supplementary Material for

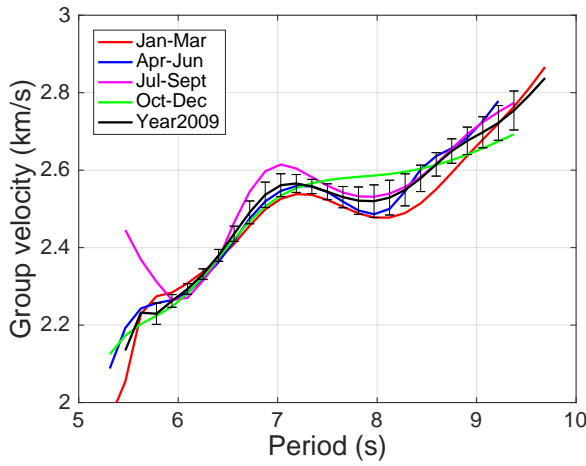
**A feasibility study on monitoring crustal structure variations
by direct comparison of surface wave dispersion curves from
ambient seismic noise**

K. Muhumuza

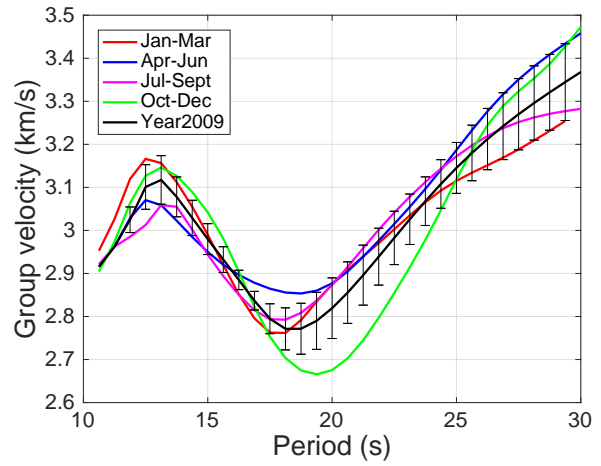
The PDF file includes:

- Figure S1. Variation in the measured dispersion curves for 2009.
- Figure S2. Variation in the measured dispersion curves for 2010.
- Figure S3. Variation in the measured dispersion curves for 2011.

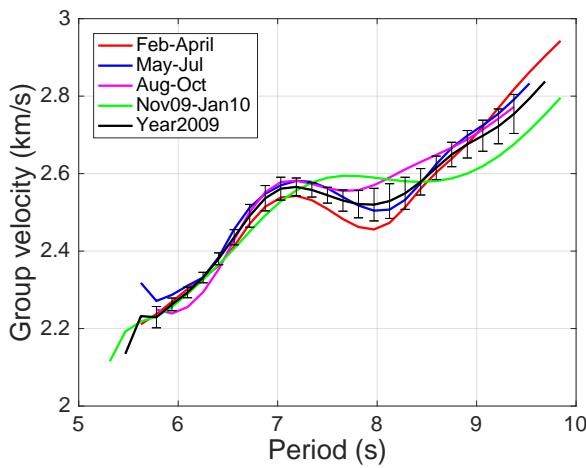
Supplementary Material



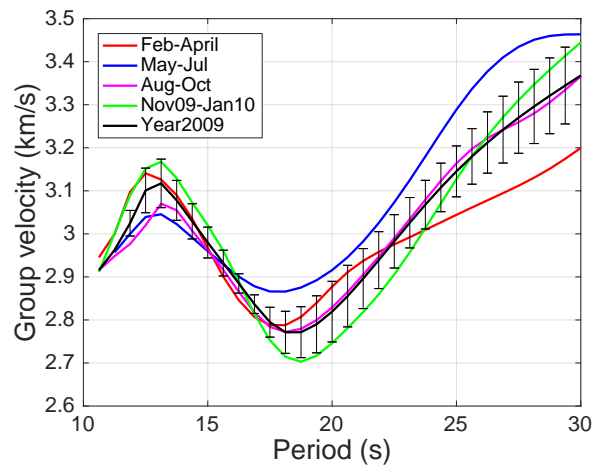
(a) Short period variations—Window(1)



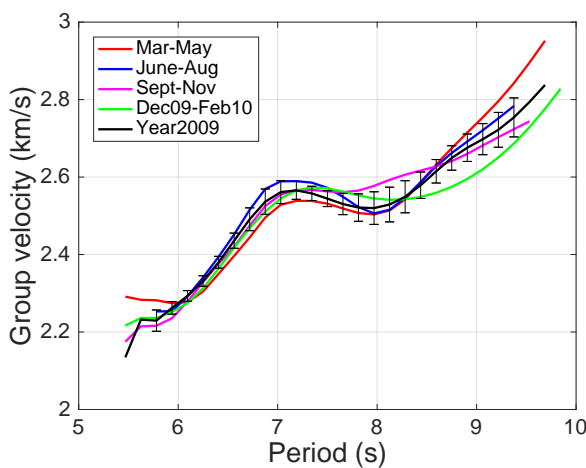
(b) Long period variations—Window(1)



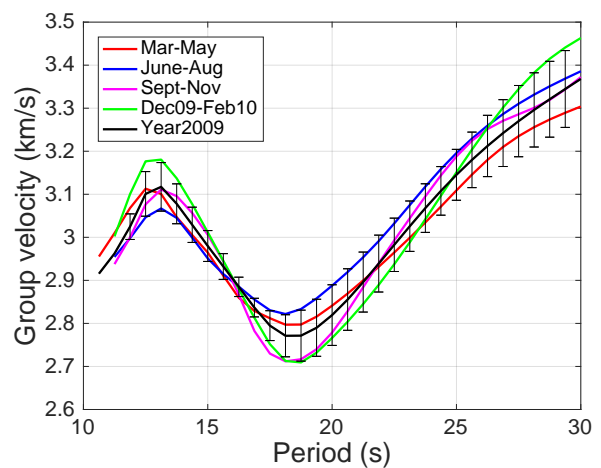
(c) Short period variations—Window(2)



(d) Long period variations—Window(2)



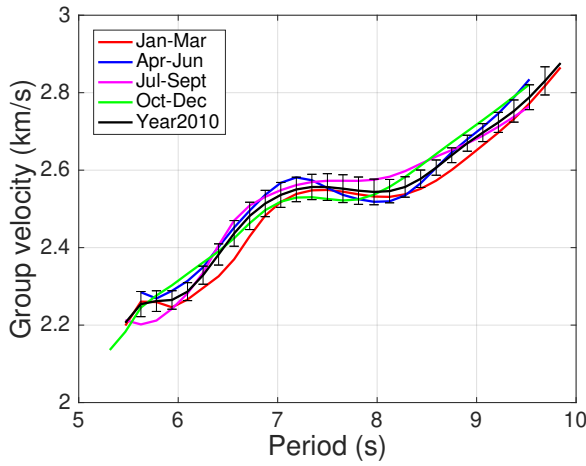
(e) Short period variations—Window(3)



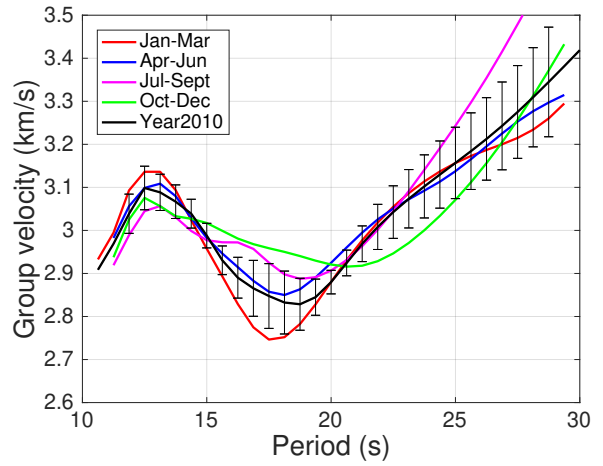
(f) Long period variations—Window(3)

Figure S1. Variation in the measured dispersion curves for 2009. Variation in the measured dispersion curves for 3-month range moving windows for short period (5–10 s) and long period (10–30 s) bands. Black line is the one year reference, and the error bars shown correspond to the computed standard deviation.

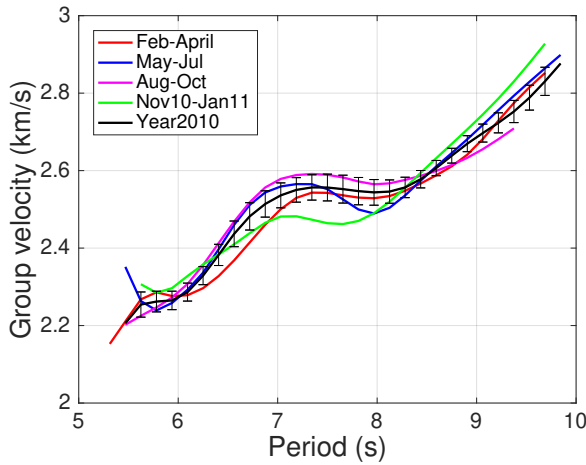
Monitoring crustal structure variations with ambient noise



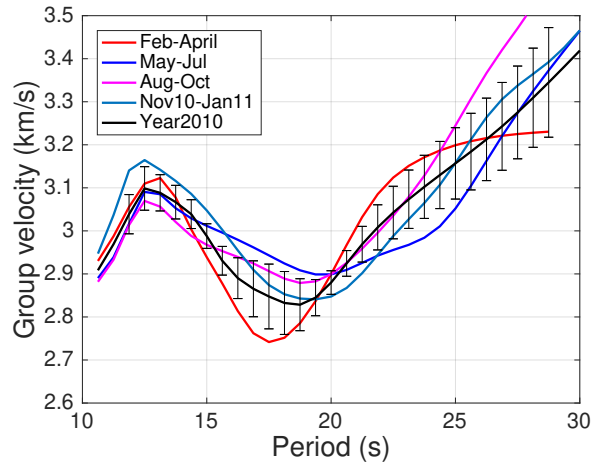
(a) Short period variations—Window(1)



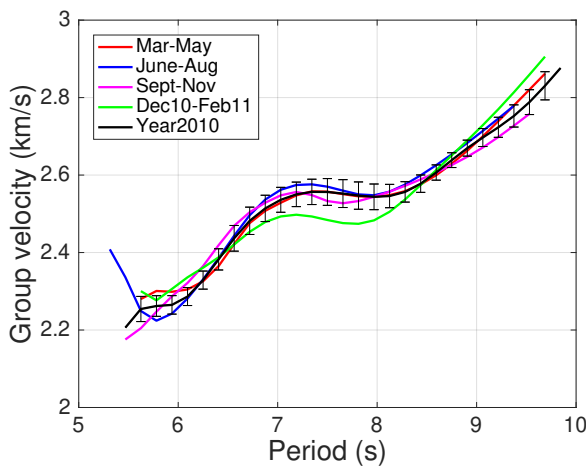
(b) Long period variations—Window(1)



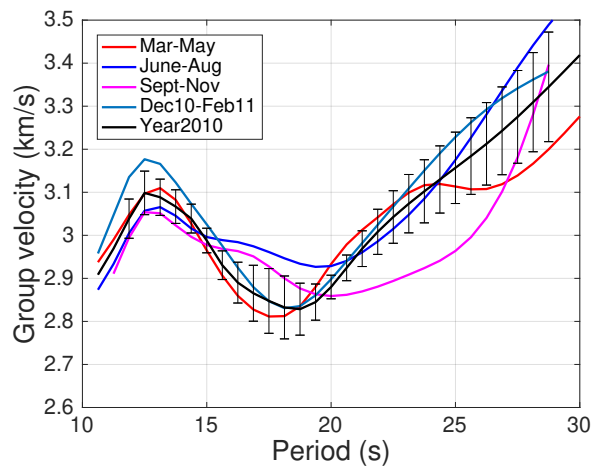
(c) Short period variations—Window(2)



(d) Long period variations—Window(2)

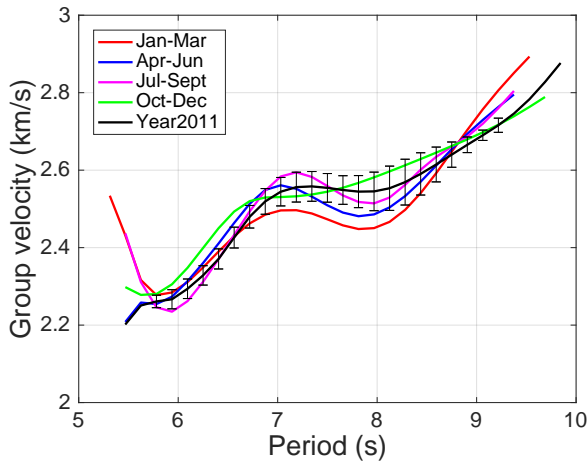


(e) Short period variations—Window(3)

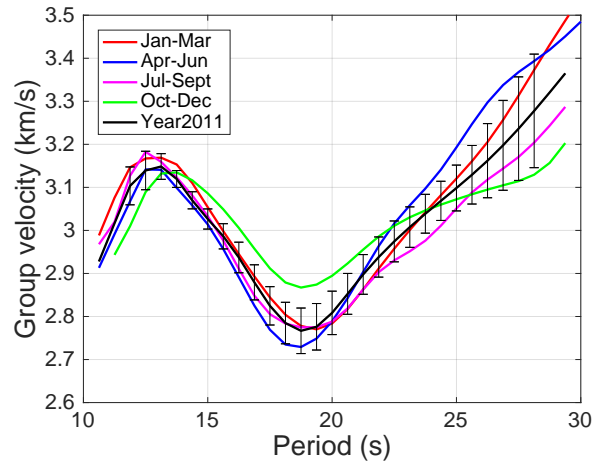


(f) Long period variations—Window(3)

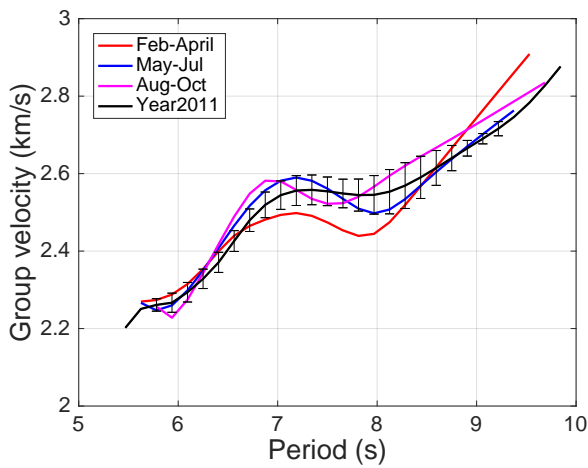
Figure S2. Variation in the measured dispersion curves for 2010. Variation in the measured dispersion curves for 3-month range moving windows for short period (5–10 s) and long period (10–30 s) bands. Black line is the one year reference, and the error bars shown correspond to the computed standard deviation.



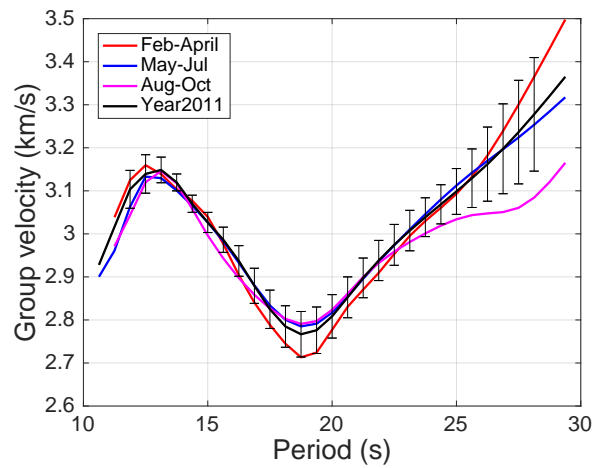
(a) Short period variations—Window(1)



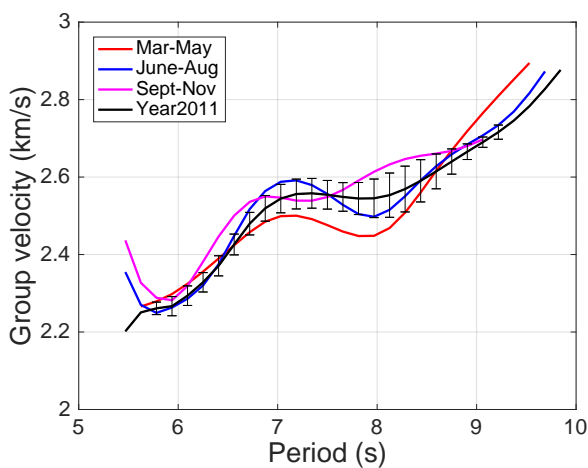
(b) Long period variations—Window(1)



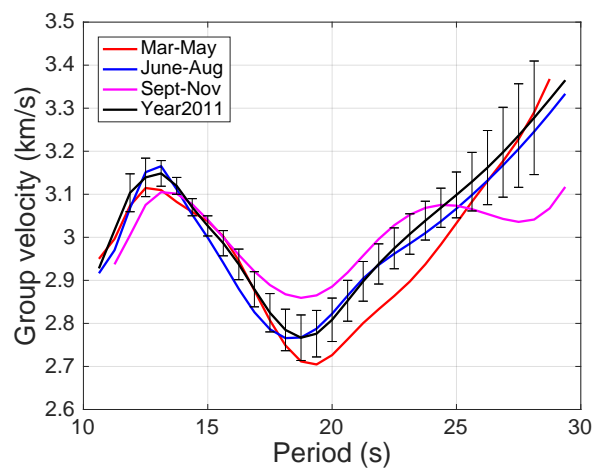
(c) Short period variations—Window(2)



(d) Long period variations—Window(2)



(e) Short period variations—Window(3)



(f) Long period variations—Window(3)

Figure S3. Variation in the measured dispersion curves for 2011. Variation in the measured dispersion curves for 3-month-range moving windows for short period (5–10 s) and long period (10–30 s) bands. Black line is the one year reference, and the error bars shown correspond to the computed standard deviation.