

Figure S1. Untreated and GS75 coated outer layers of N95 respirator.

The untreated (a, c, e) and GS75 agent coated (b, d, f) outer layers of the N95 respirator presented for SEM observation. SEM images are shown of the filter structure of N95 respirator layers with and without GS75. The figures were taken under a magnification of x300 (a, b, d), x100(f) and x50(c, e). The arrows indicated GS75 agents onto the N95 respirator layers.

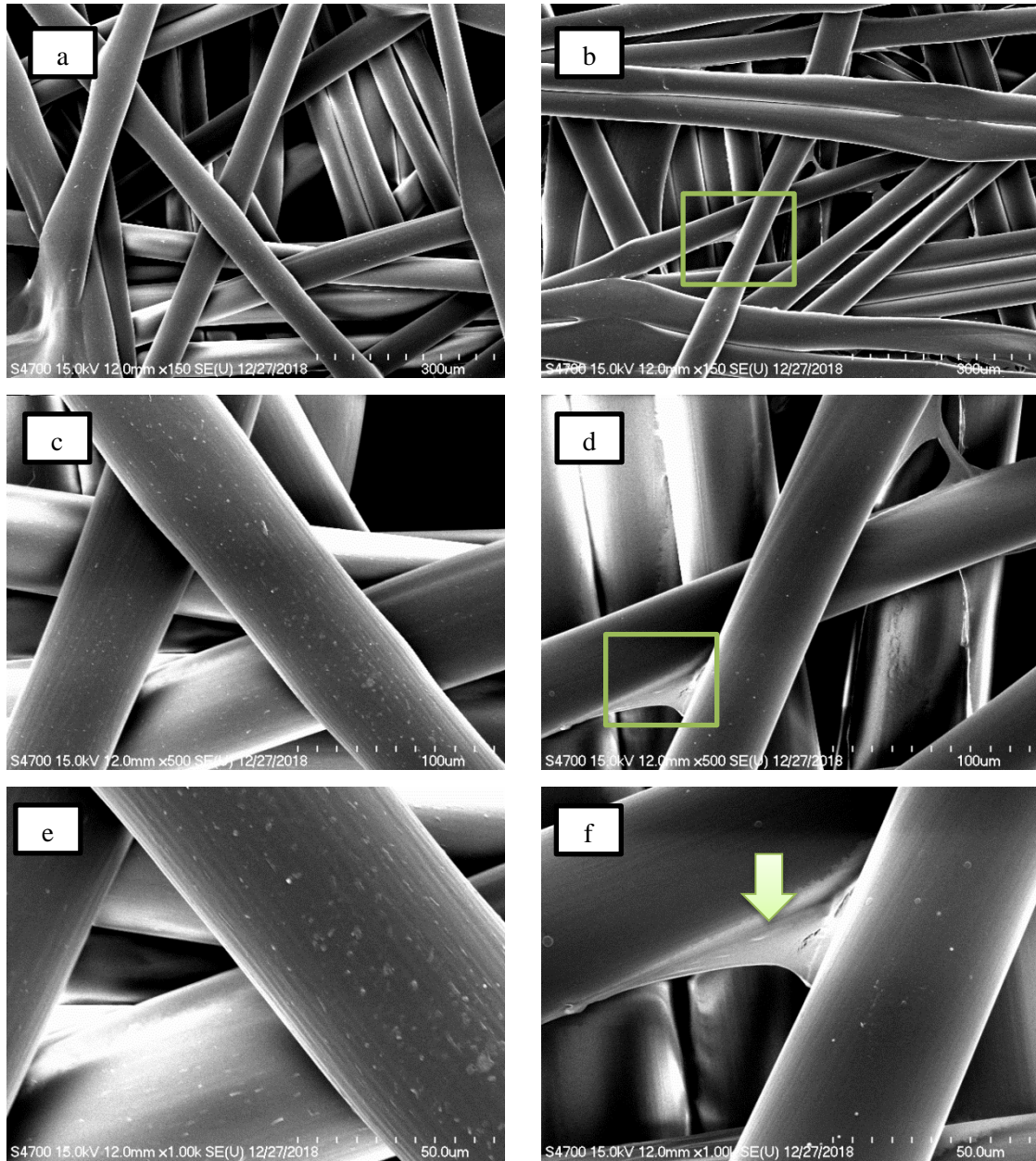


Figure S2. Untreated and GS75 coated second inner layers of N95 respirator

The untreated (a, c, e) and GS75 coated (b, d, f) second inner layers of the N95 respirator presented for SEM observation. SEM images are shown of the filter structure of N95 respirator layers with and without GS75. The figures were taken under a magnification of x300 (a, b), x100(c, d) and x50(e, f). The arrows indicated GS75 agents onto the N95 respirator layers.

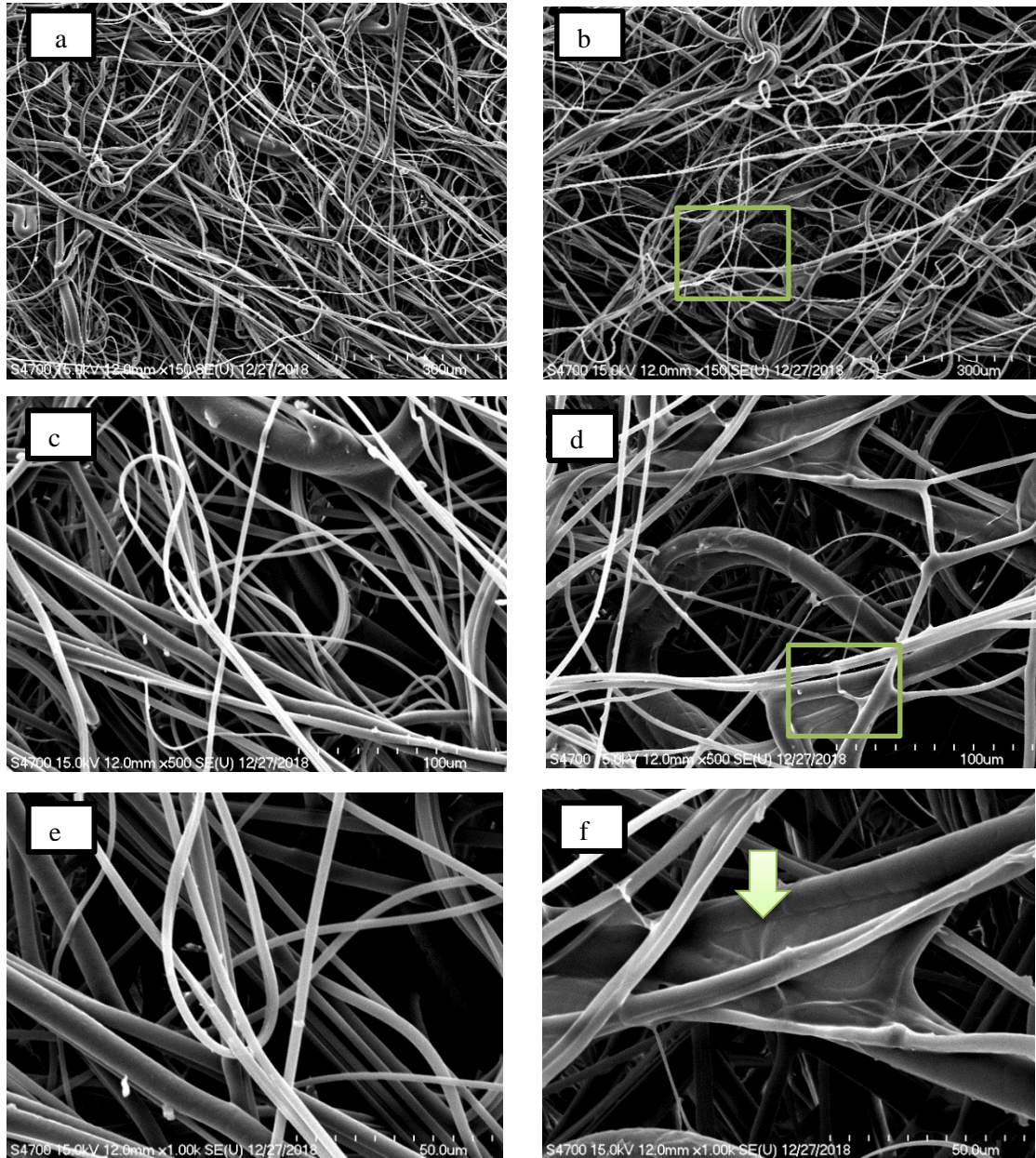


Figure S3. Untreated and GS75 coated middle layers of N95 respirator

The untreated (a, c, e) and GS75 coated (b, d, f) middle layers of the N95 respirator observed by SEM. SEM images are shown of the filter structure of N95 respirator layers with and without GS75 agent. The figures were taken under a magnification of x300(a, b), x100(c, d) and x50(e, f). The arrows indicated GS75 agents onto the N95 respirator layers.

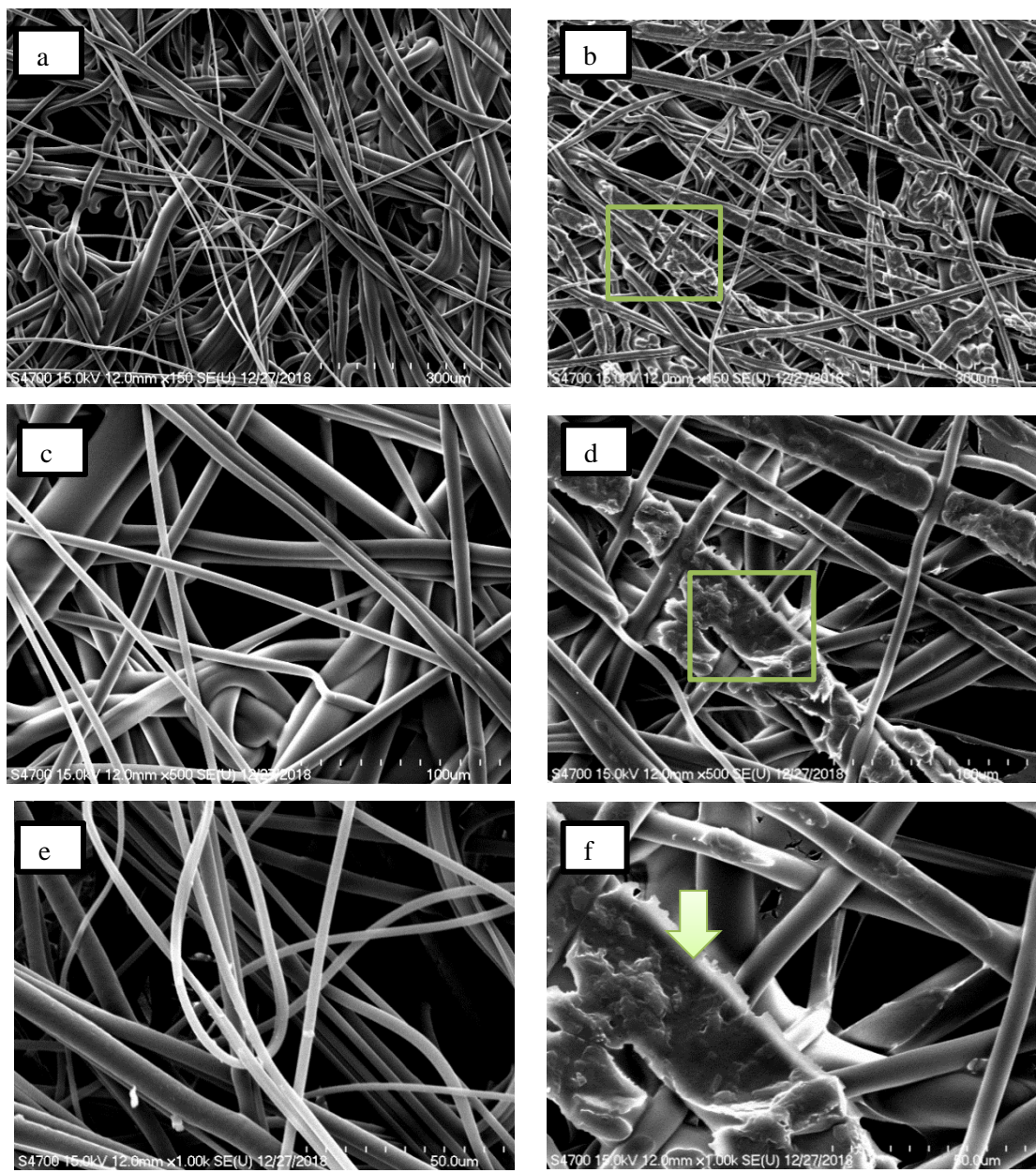


Figure S4. Untreated and GS75 coated inner layers of N95 respirator

The untreated (a, c, e) and GS75 coated (b, d, f) inner layers of the N95 respirator observed by SEM. SEM images are shown of the filter structure of N95 respirator layers with and without GS75 agent. The figures were taken under a magnification of x300(a, b), x100(c, d) and x50(e, f). The arrows indicated GS75 agents onto the N95 respirator layers.