

Supporting information

A structural study of *Escherichia coli* cells using an *in situ* liquid chamber TEM technology

5 Yibing Wang^a, Xin Chen^{b,c,*}, Hongliang Cao^b, Chao Deng^b, Xiaodan Cao^a, Ping Wang^{a,*}

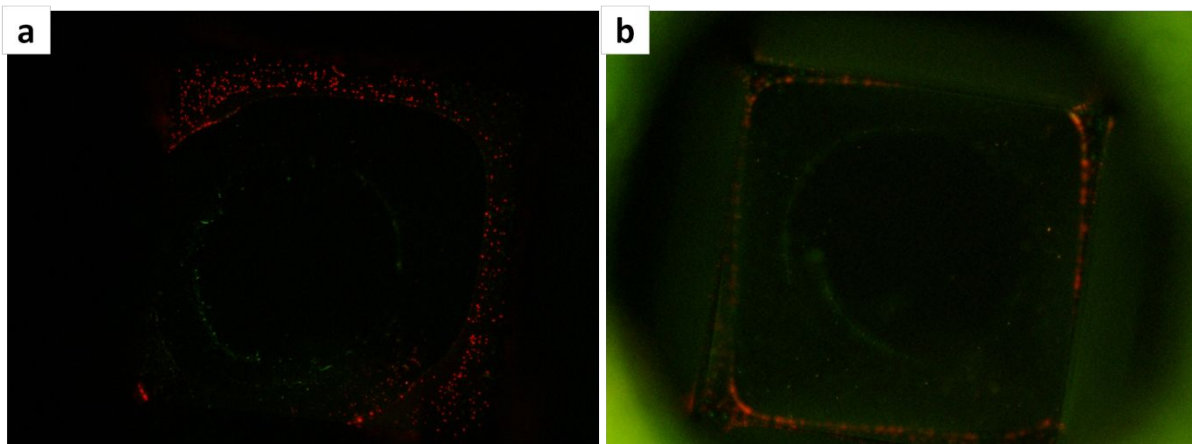
^aState Key Laboratory of Bioreactor Engineering, Biomedical Nanotechnology Center, East China University of Science and Technology, Shanghai 200237, P. R. China. E-mail: pwang11@ecust.edu.cn; Fax: 86-021-64250533; Tel:86-021-64250533

^bKey Laboratory for Ultrafine Materials of Ministry of Education and Shanghai Key Laboratory of Advanced Polymeric Materials, School of Materials Science and Engineering, East China University of Science and Technology, Shanghai

10 200237, P. R. China. E-mail: xinchen73@ecust.edu.cn; Fax:86-021-64253582; Tel:86-021-64253582

^cState Key Laboratory of Functional Materials for Informatics, Shanghai Institute of Microsystem and Information Technology, Chinese Academy of Sciences, 865 Changning Road, Shanghai 200050, P. R. China.

E-mail: xinchen73@ecust.edu.cn; Fax:86-021-64253582; Tel:86-021-64253582



15

Fig. S1 The fluorescence microscopy images of *E. coli* cells in the liquid chamber without (a) or with (b) glucose. The images were got after TEM exposing and at the same exposure time.