

## Supplementary information

Figure S1. Chromatogram of 16 EPA and deuterated PAHs in SCAN mode, from 0 to 15 min: 1) Naph-d<sub>8</sub>, 2) Naph, 3) Bph-d<sub>10</sub>, 4) Acy, 5) Ace, 6) FL.

Figure S2. Chromatogram of 16 EPA and deuterated PAHs in SCAN mode, from 15 to 20.5 min: 7) Phe-d<sub>10</sub>, 8) Phe, 9) Ant, 10) Ft, 11) Pyr-d<sub>10</sub>, 12) Pyr.

Figure S3. Chromatogram of 16 EPA and deuterated PAHs in SCAN mode, from 22.5 to 35.5 min: 13) BaA-d<sub>12</sub>, 14) BaA, 15) Chry, 16) BbFt, 17) BkFt, 18) BaP-d<sub>10</sub>, 19) BaP, 20) IP, 21) DBahA, 22) BghiP-d<sub>12</sub>, 23) BghiP.

Figure S4. PAHs and deuterated PAHs in SIM windows (m/z 226,240,228 and 234) in the analysis of NIST SRM 1649b dust.

Figure S5. PAHs and deuterated PAHs in SIM windows (m/z 252 and 264) in the analysis of NIST SRM 1649b dust.

Figure S6. PAHs and deuterated PAHs in SIM windows (m/z 276, 288 and 278) in the analysis of NIST SRM 1649b dust.

Figure S7. PAHs and deuterated PAHs in m/z 300 SIM window in the analysis of NIST SRM 1649b dust.

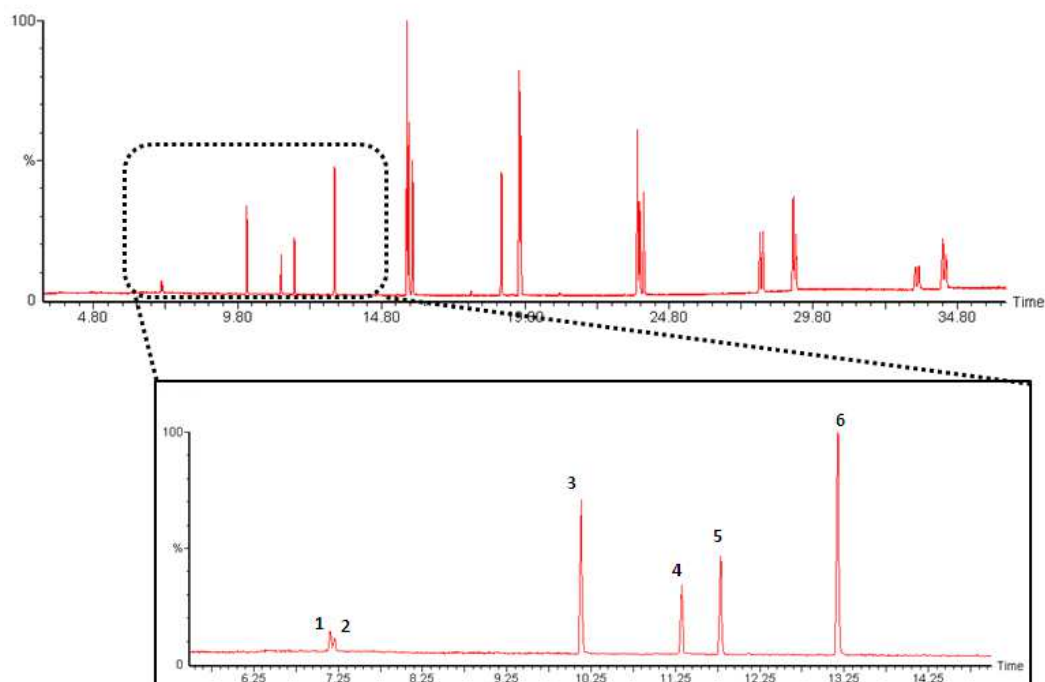


Figure S1. Chromatogram of 16 EPA and deuterated PAHs in SCAN mode, from 0 to 15 min: 1) Naph-<sub>d</sub><sub>8</sub>, 2) Naph, 3) Bph-<sub>d</sub><sub>10</sub>, 4) Acy, 5) Ace, 6) FL.

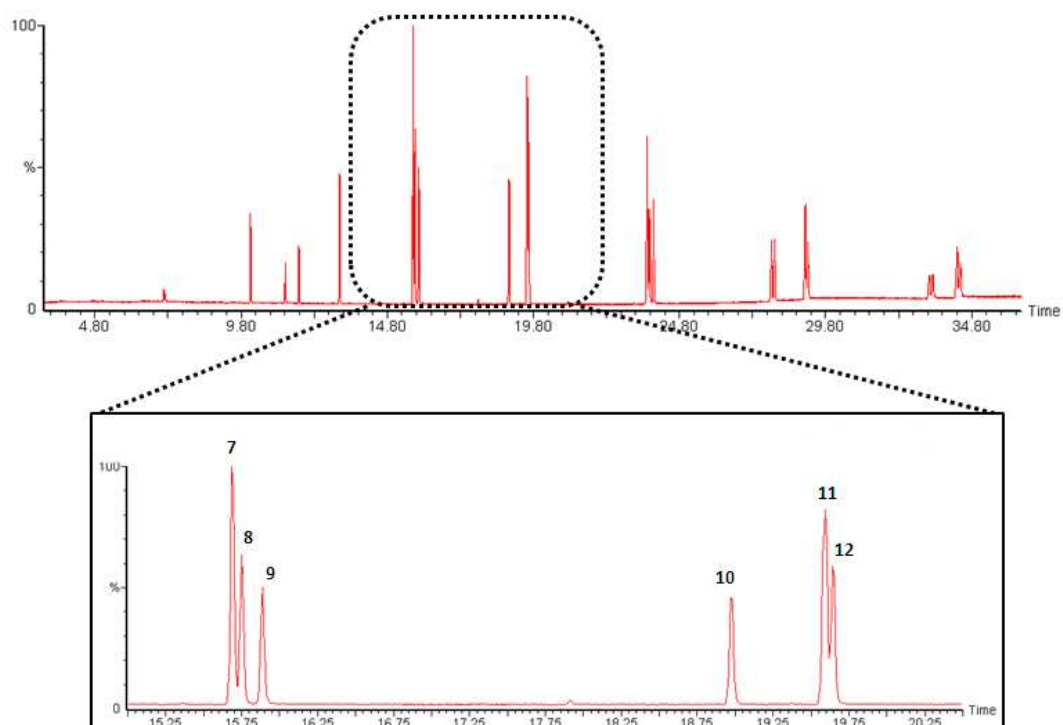


Figure S2. Chromatogram of 16 EPA and deuterated PAHs in SCAN mode, from 15 to 20.5 min: 7) Phe-<sub>d</sub><sub>10</sub>, 8) Phe, 9) Ant, 10) Ft, 11) Pyr-<sub>d</sub><sub>10</sub>, 12) Pyr.

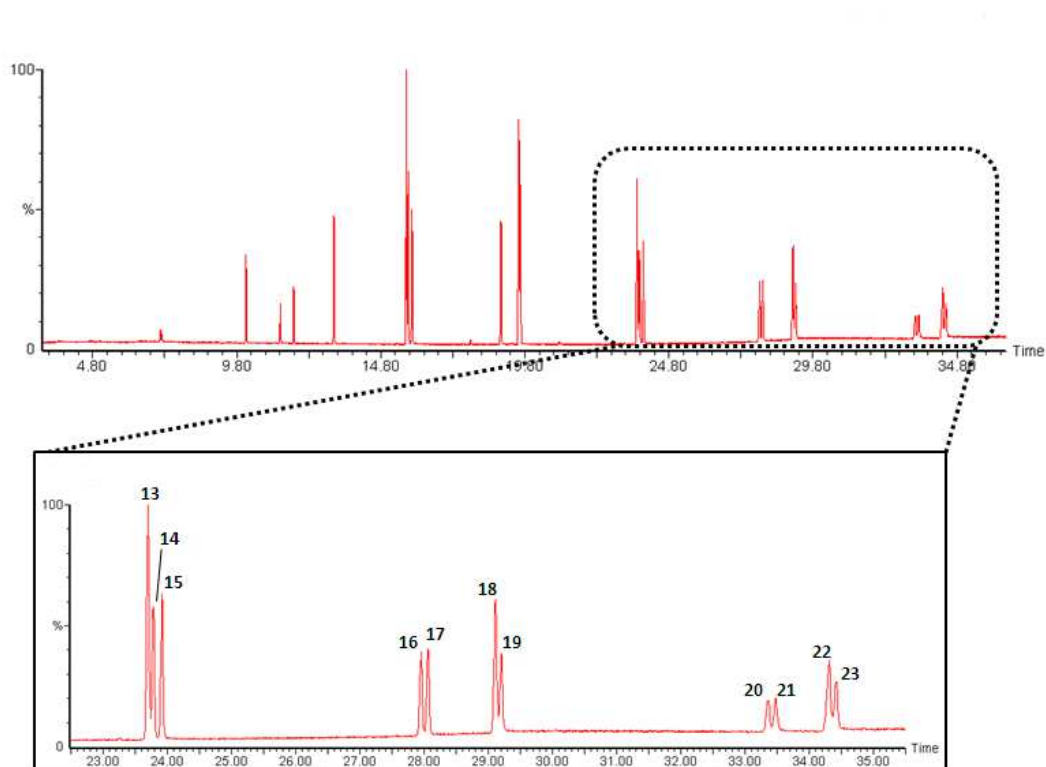


Figure S3. Chromatogram of 16 EPA and deuterated PAHs in SCAN mode, from 22.5 to 35.5 min: 13) BaA-d<sub>12</sub>, 14) BaA, 15) Chry, 16) BbFt, 17) BkFt, 18) BaP-d<sub>10</sub>, 19) BaP, 20) IP, 21) DBahA, 22) BghiP-d<sub>12</sub>, 23) BghiP.

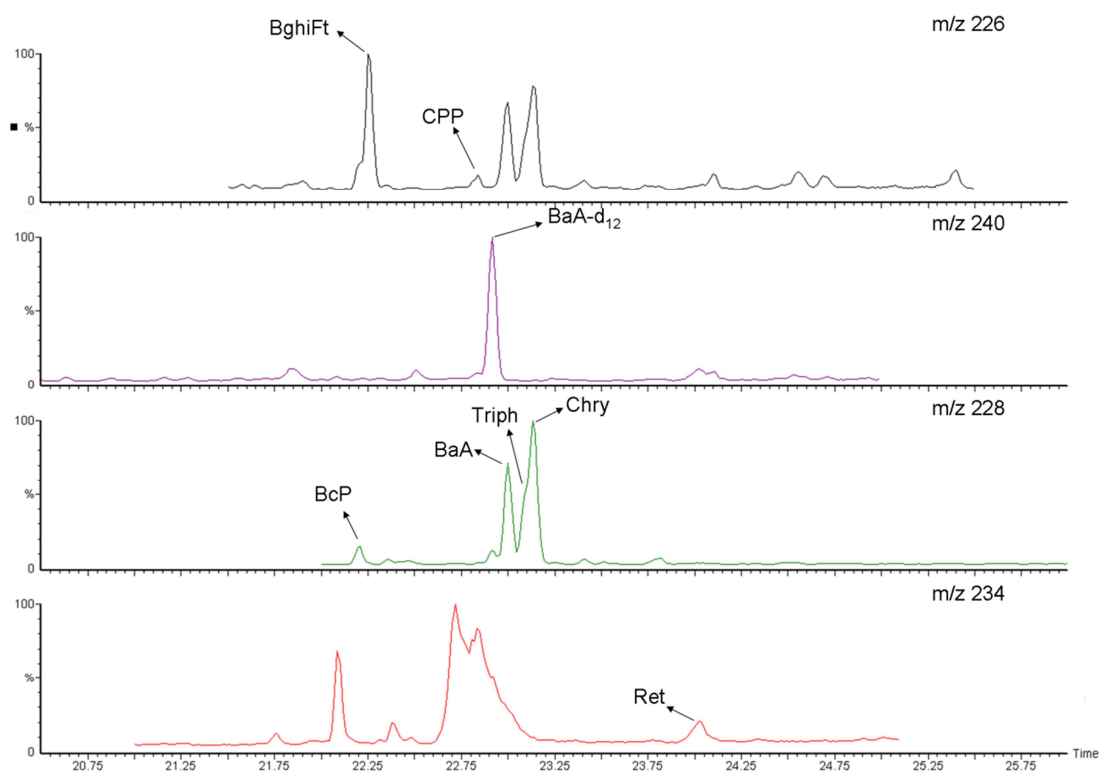


Figure S4. PAHs and deuterated PAHs in SIM windows (m/z 226,240,228 and 234) in the analysis of NIST SRM 1649b dust.

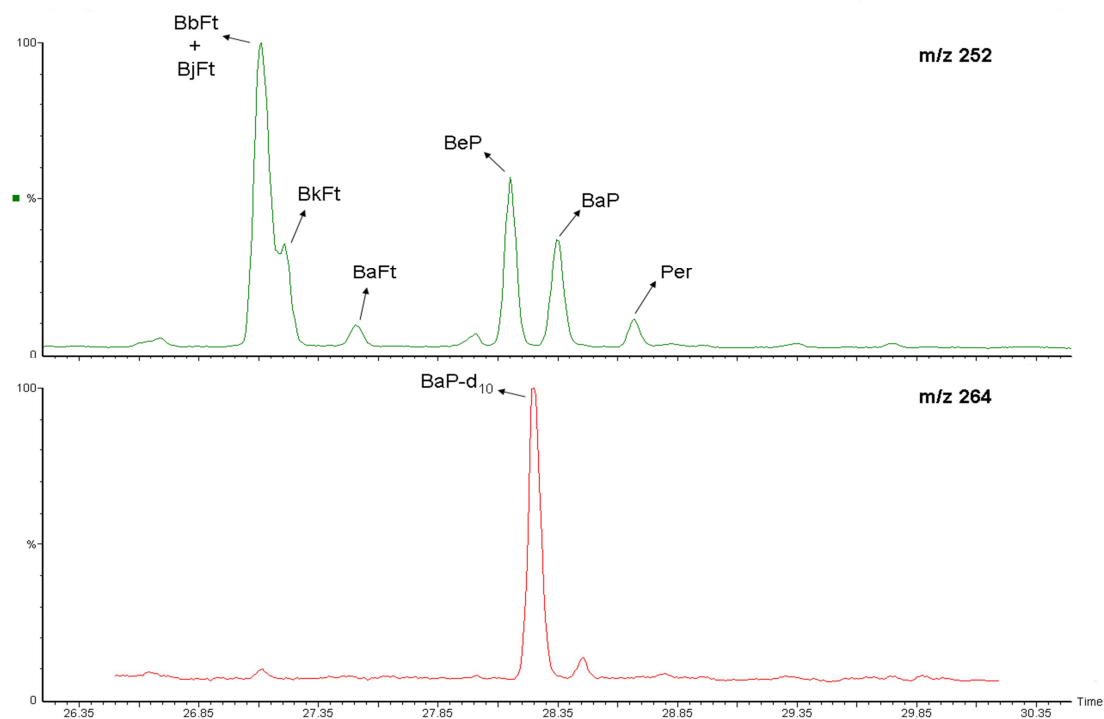


Figure S5. PAHs and deuterated PAHs in SIM windows (m/z 252 and 264) in the analysis of NIST SRM 1649b dust.

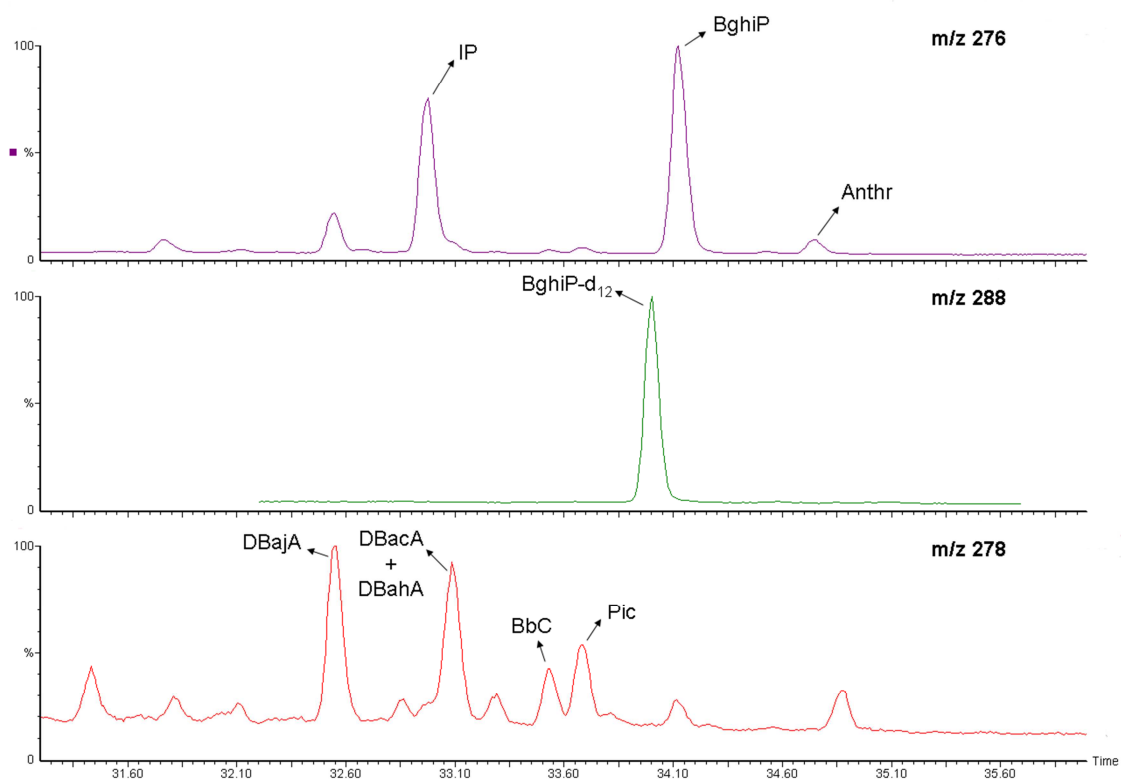


Figure S6. PAHs and deuterated PAHs in SIM windows (m/z 276, 288 and 278) in the analysis of NIST SRM 1649b dust.

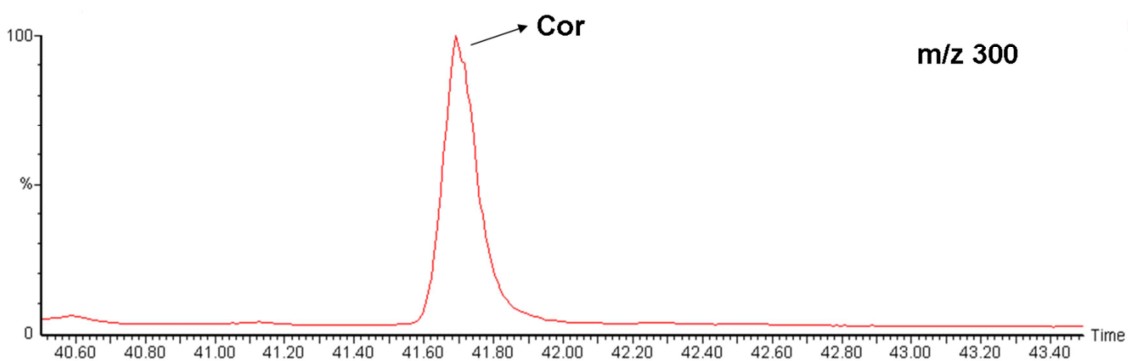


Figure S7. PAHs and deuterated PAHs in m/z 300 SIM window in the analysis of NIST SRM 1649b dust.