

Electronic Supplementary Material

Highly sensitive immunosensing of carcinoembryonic antigen based on gold nanoparticles dotted PB@PANI core-shell nanocubes as a signal probe

Dexiang Feng,^{1,2} Lingzhi Chen,² Ke Zhang,^{1,2} Shuangshuang Zhu,¹ Meichen Ying,² Peng Jiang,² Menglan Fu,² Yan Wei,^{1,2} Lihua Li²

¹Department of Chemistry, Wannan Medical College, Wuhu, 241002, China

²Institute of Synthesis and Application of Medical Materials, Department of Pharmacy, Wannan Medical College, Wuhu, 241002, China

Correspondence should be addressed to Lihua Li; llh05530226@126.com and Yan Wei; yanwei@wnmc.edu.cn

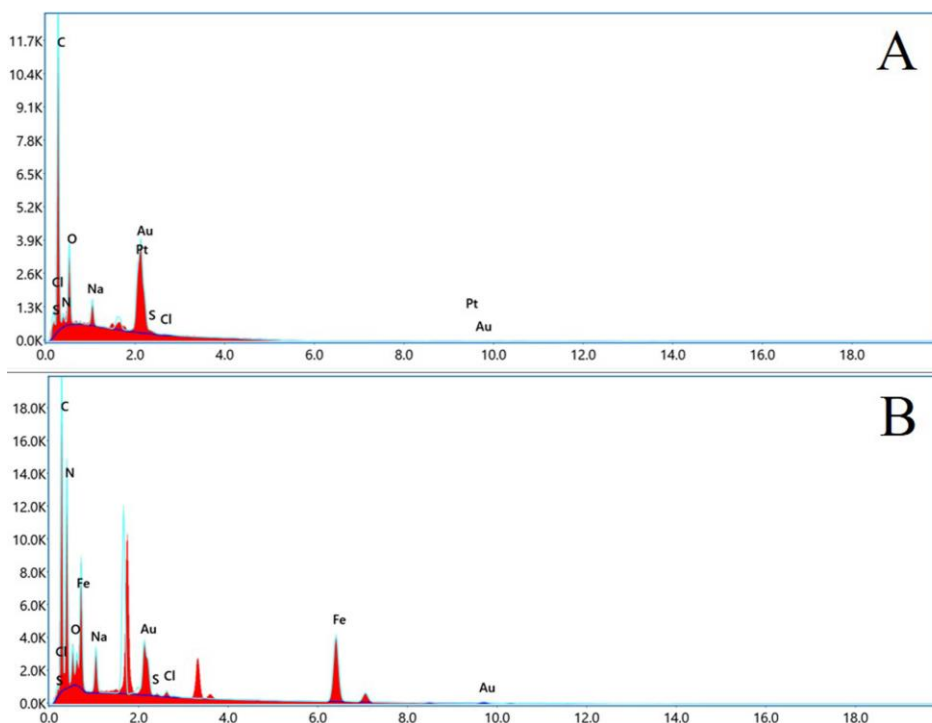


FIGURE. S1 EDX spectra of (A) AuPt NFs/L-Cys/GCE, (B) Au NPs-PB@PANI.