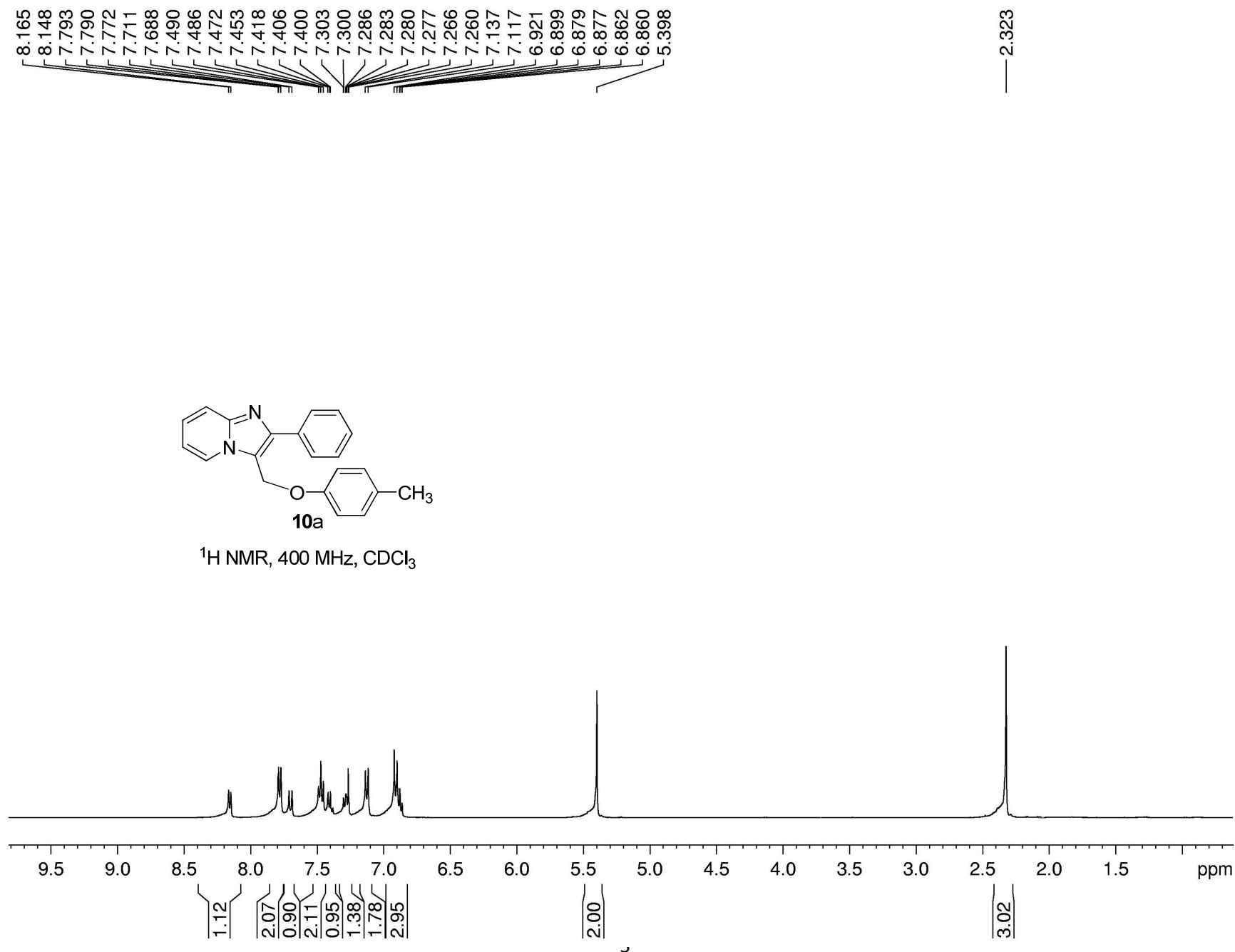


^1H NMR, 400 MHz, CDCl_3

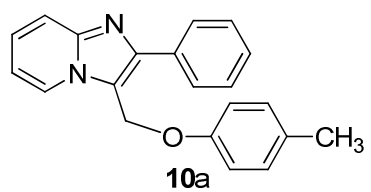


— 156.03
 — 146.20
 — 145.53
 — 133.88
 — 130.96
 — 130.09
 — 128.72
 — 128.18
 — 125.33
 — 124.16
 — 117.66
 — 115.53
 — 114.82
 — 112.67

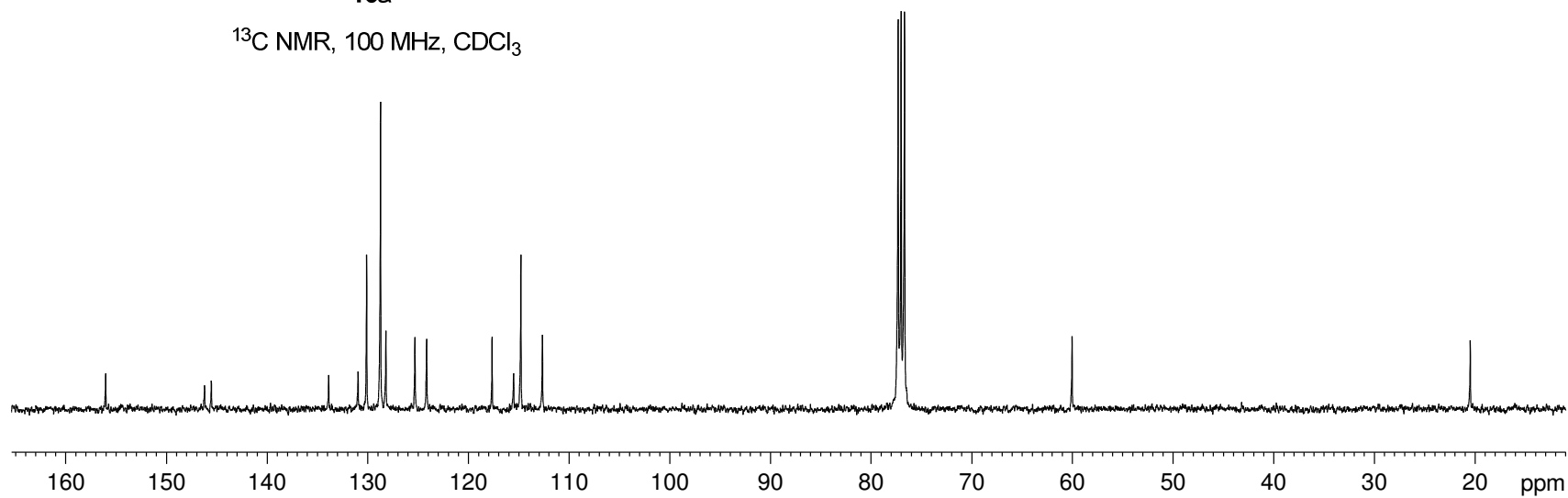
— 77.33
 — 77.02
 — 76.70

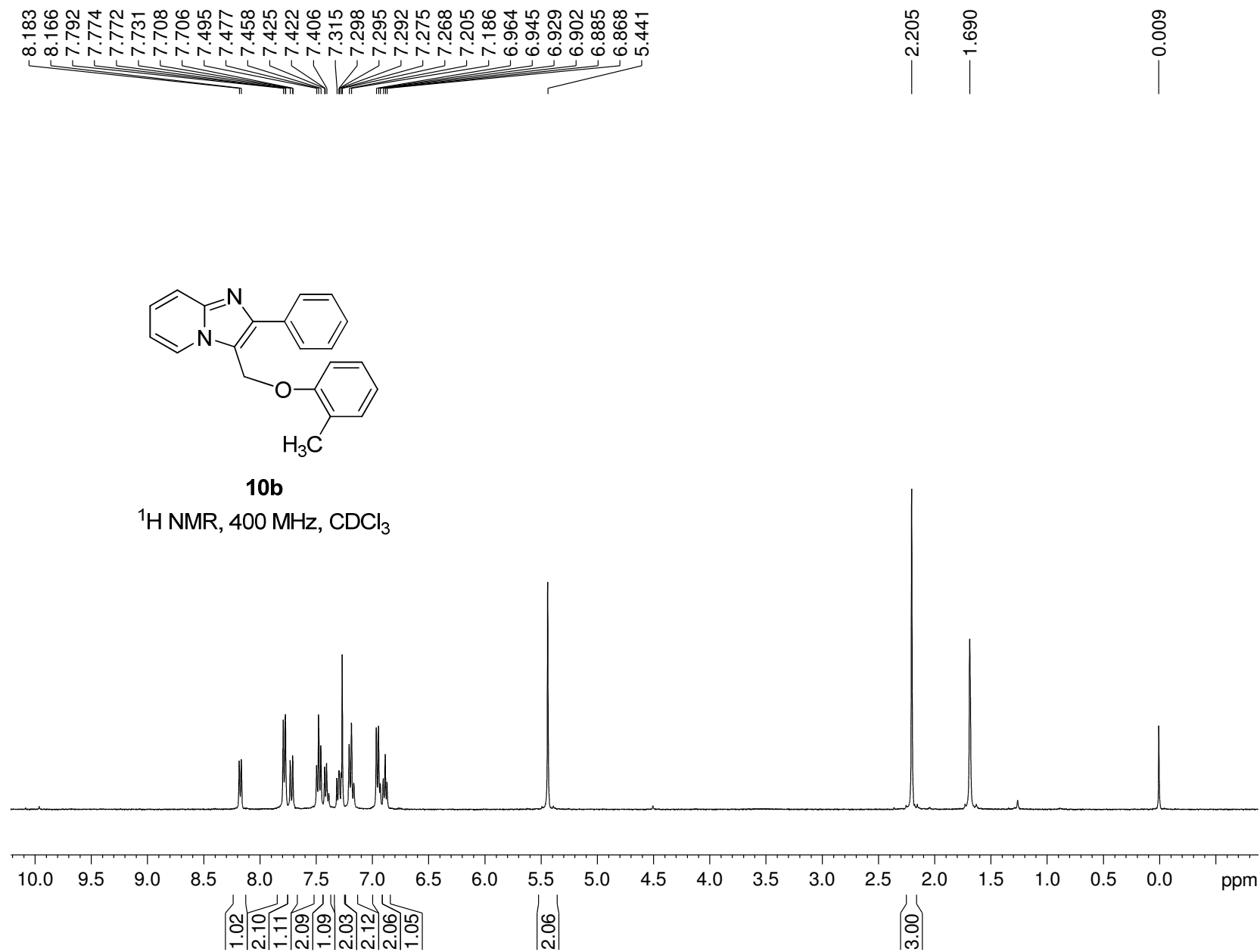
— 60.05

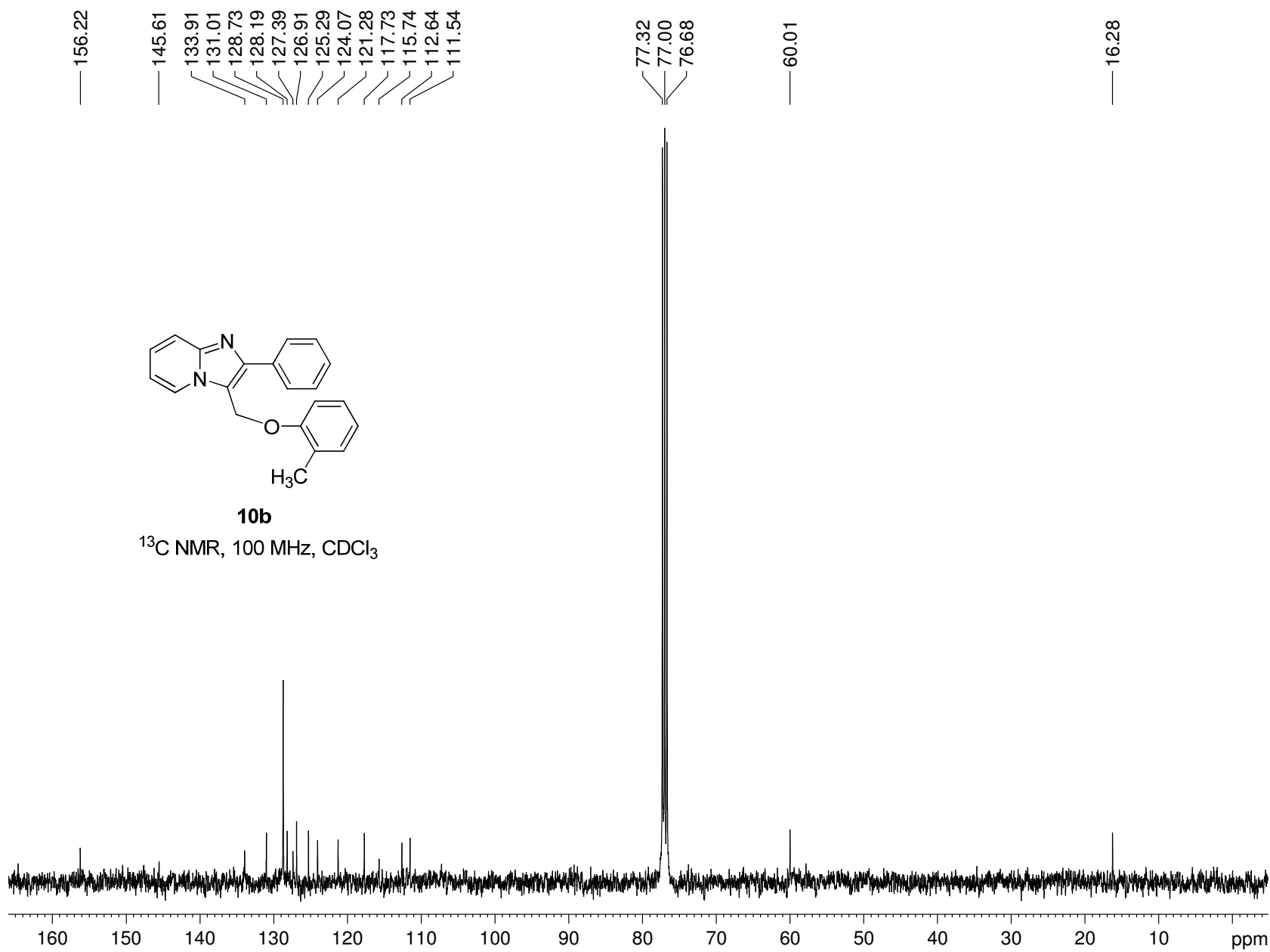
— 20.50

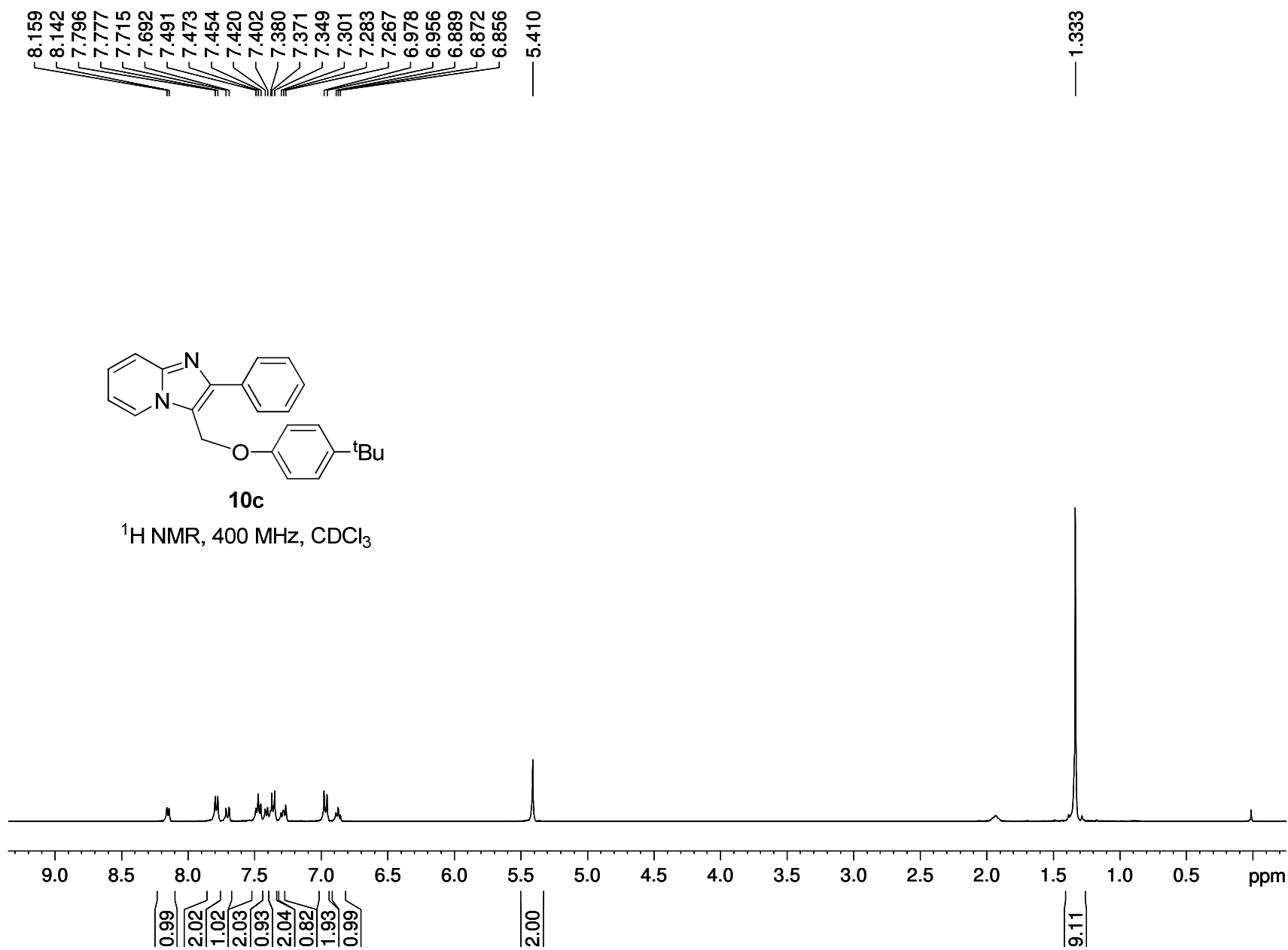


^{13}C NMR, 100 MHz, CDCl_3







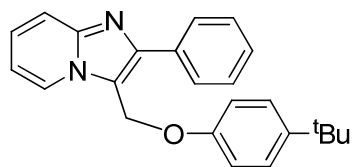


— 155.89
 — 146.19
 — 145.53
 — 144.40
 — 133.86
 — 128.71
 — 128.17
 — 126.44
 — 125.31
 — 124.14
 — 117.64
 — 115.47
 — 114.39
 — 112.64

— 77.32
 — 77.00
 — 76.68

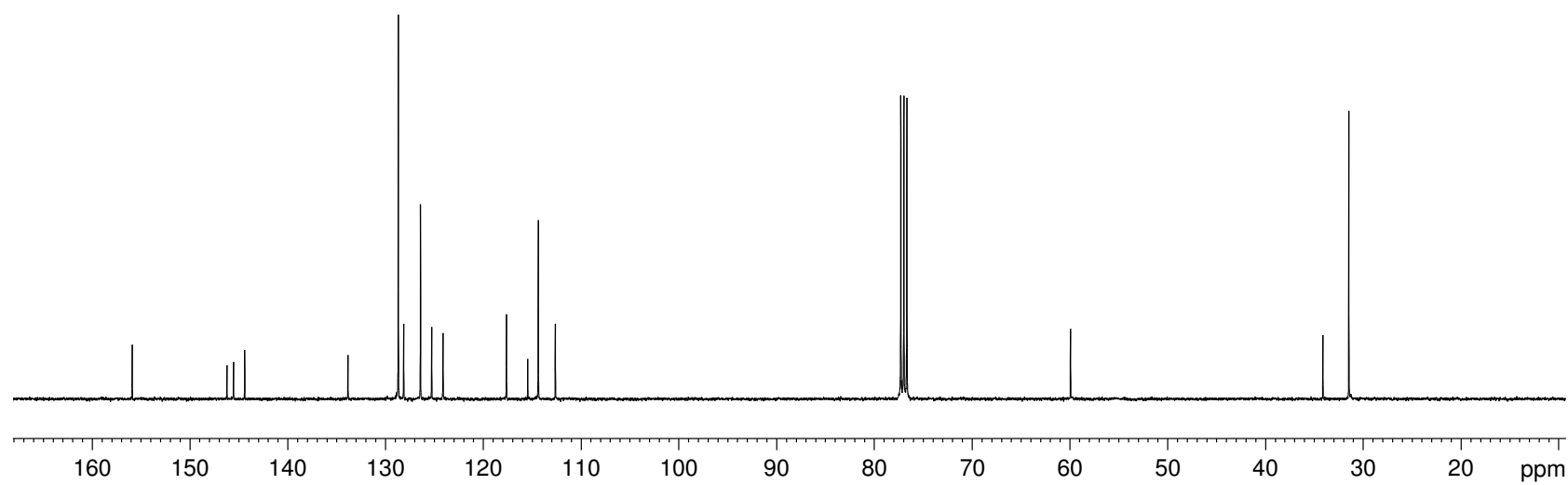
— 59.94

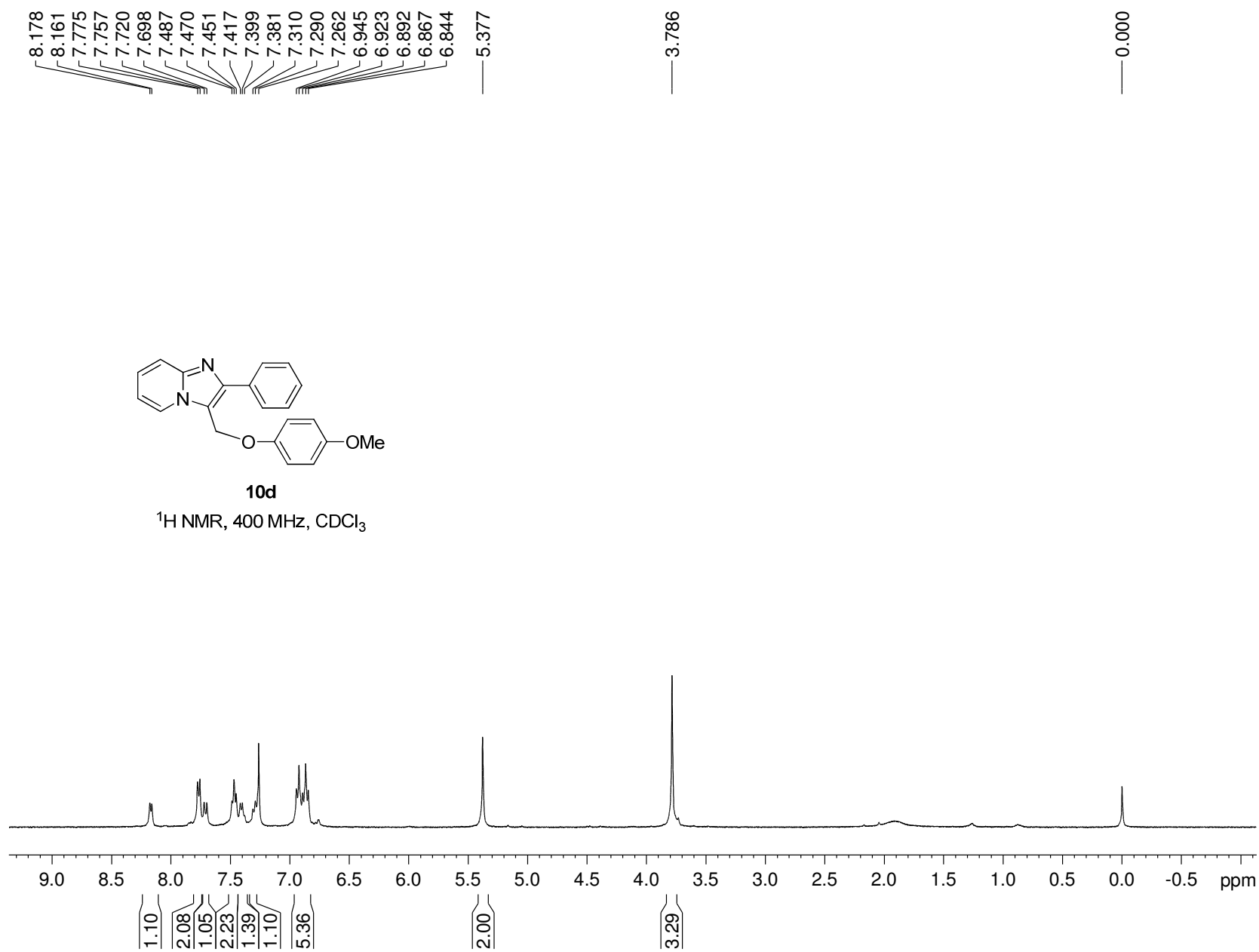
— 34.13
 — 31.48



10c

^{13}C NMR, 100 MHz, CDCl_3





— 154.57
— 152.23

— 146.27
— 145.55

— 133.95

— 128.74

— 128.20

— 125.32

— 124.19

— 117.70

— 116.21

— 115.66

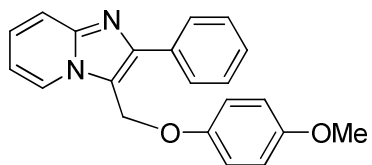
— 114.83

— 112.68

— 77.36
— 77.04
— 76.73

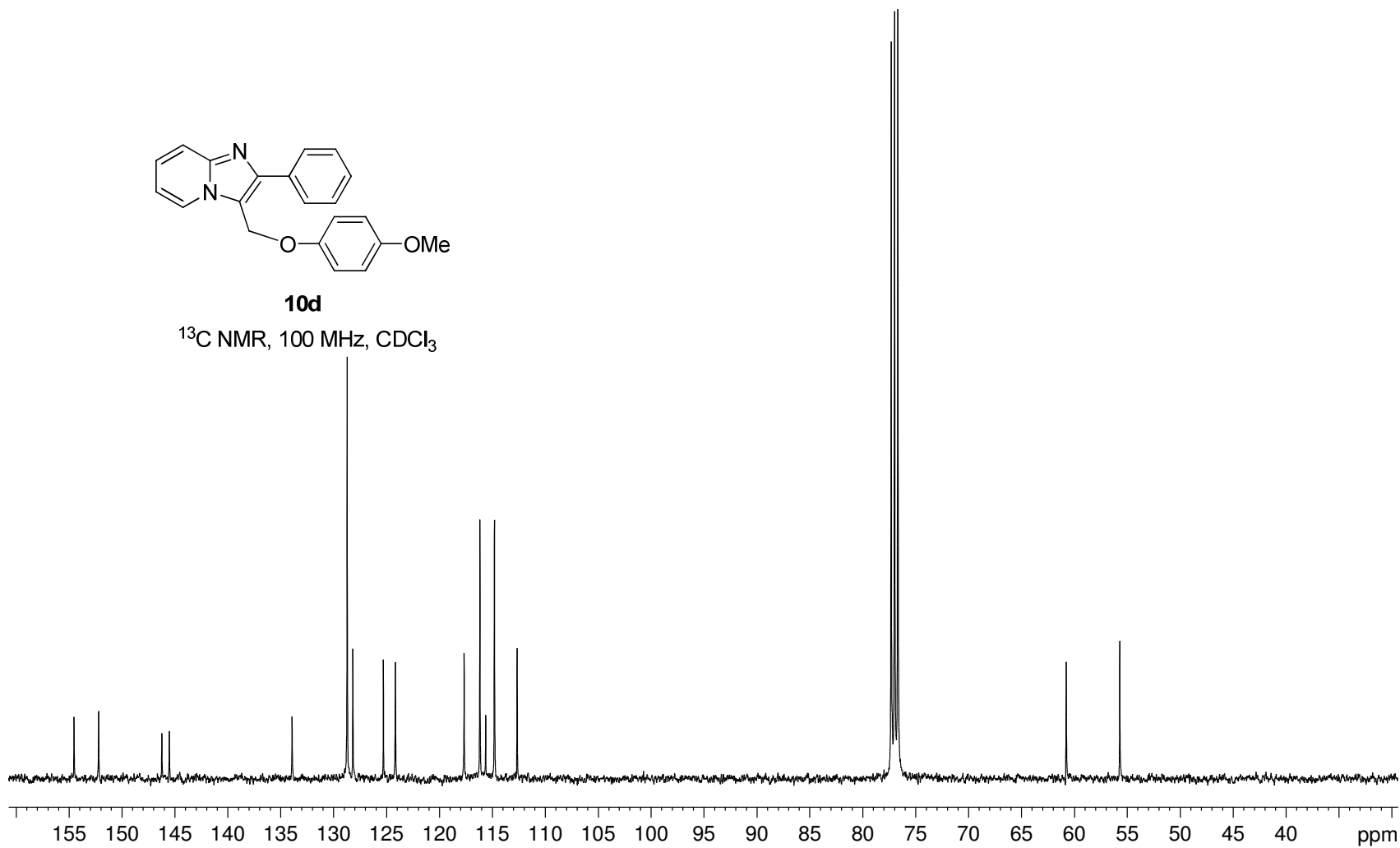
— 60.81

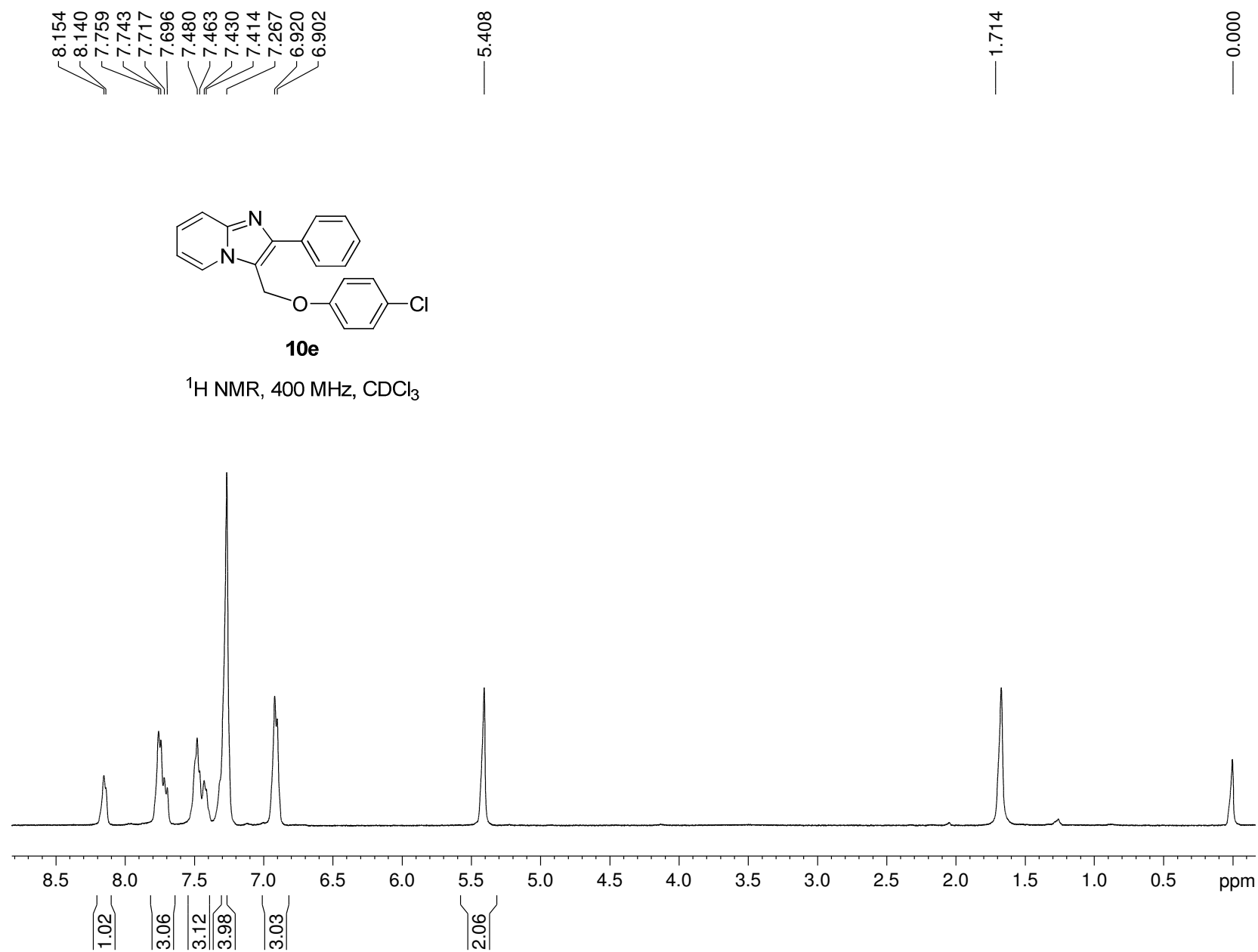
— 55.76

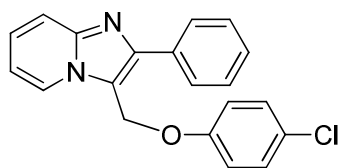


10d

^{13}C NMR, 100 MHz, CDCl_3

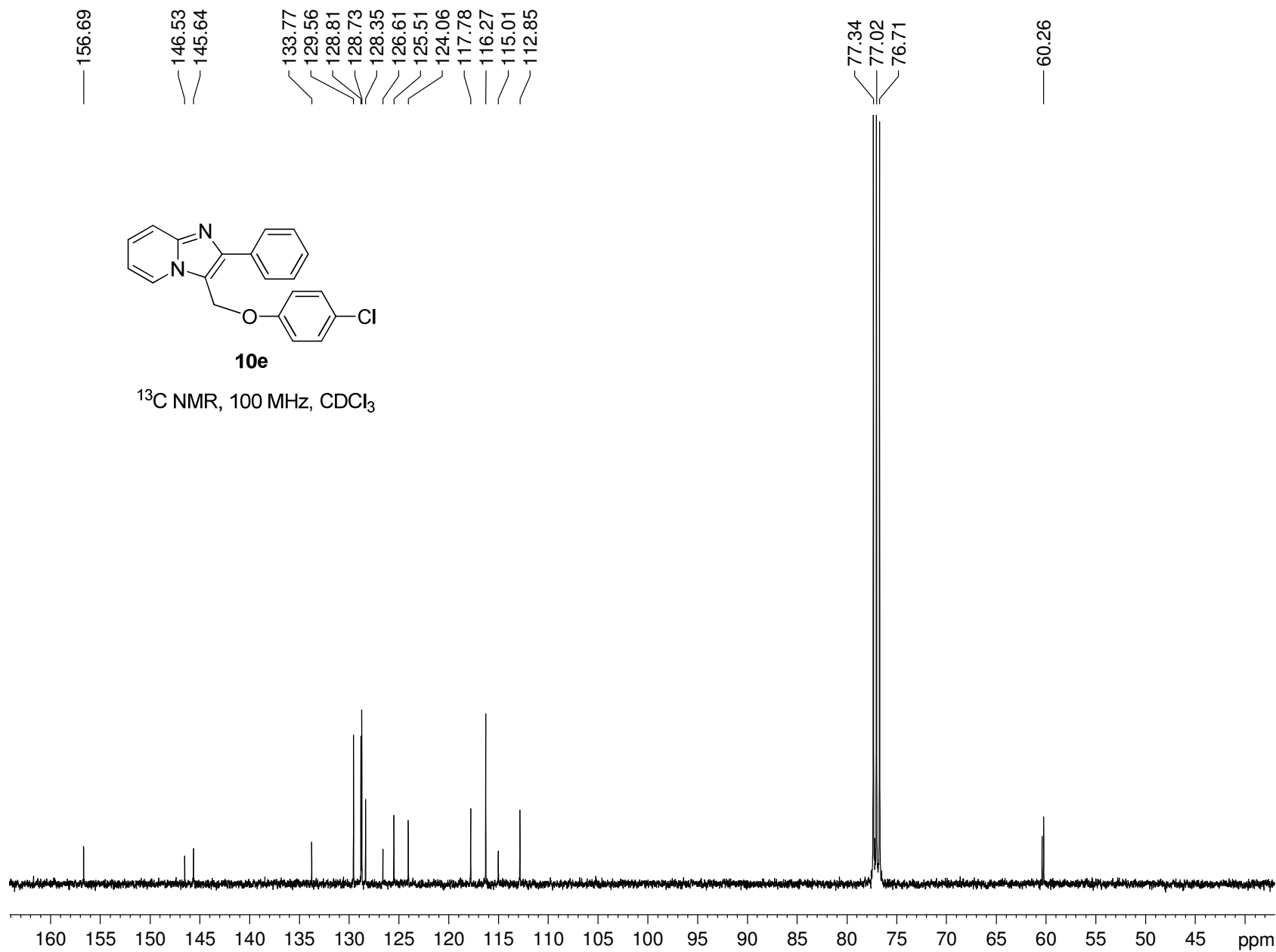






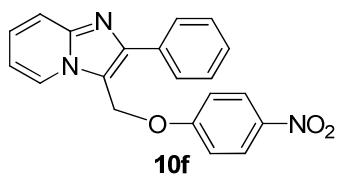
10e

^{13}C NMR, 100 MHz, CDCl_3

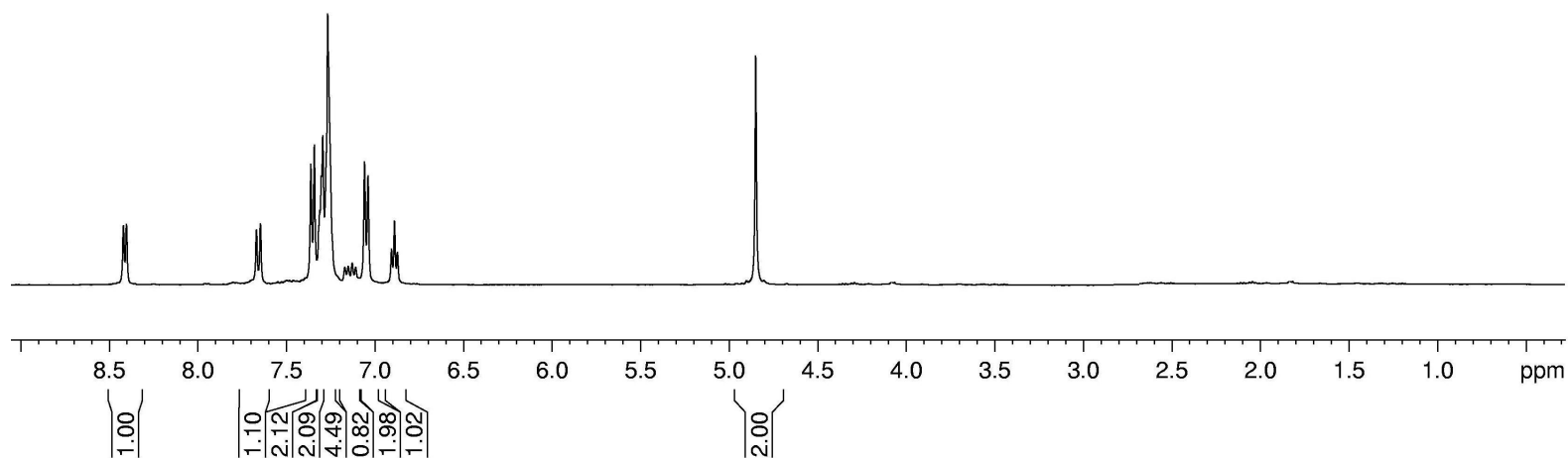


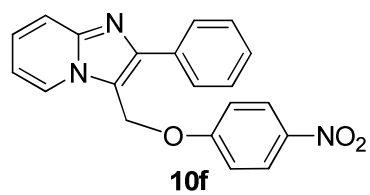
8.420
8.403
7.669
7.646
7.362
7.342
7.312
7.302
7.294
7.170
7.150
7.128
7.108
7.058
7.038
6.906
6.889
6.872

4.849

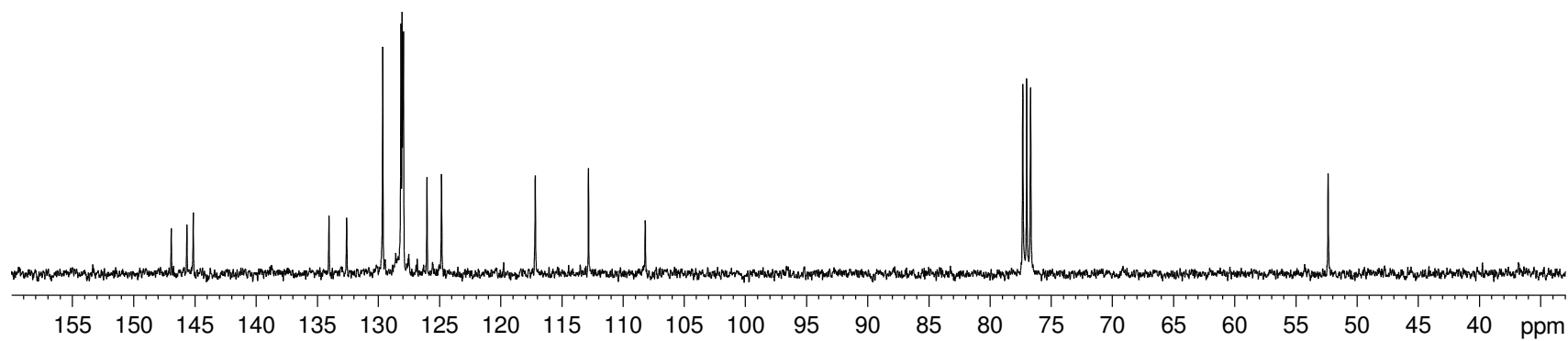


^1H NMR, 400 MHz, CDCl_3





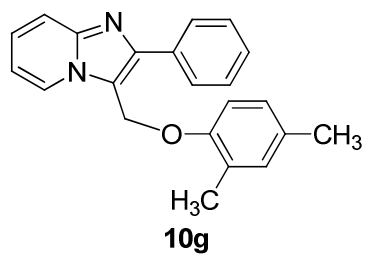
^{13}C NMR, 100 MHz, CDCl_3



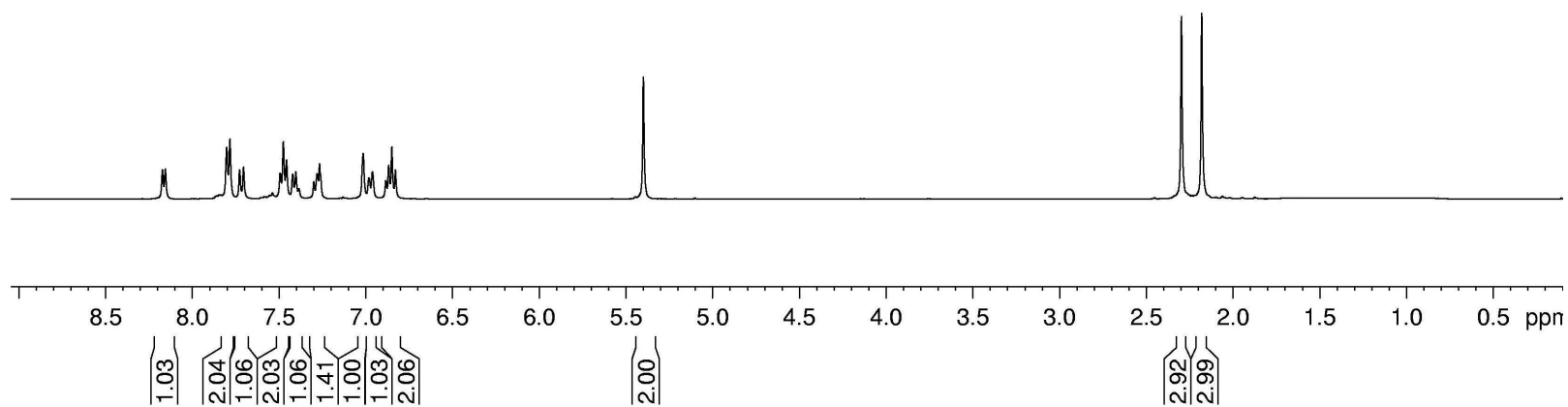
8.171
8.154
7.803
7.784
7.728
7.706
7.495
7.476
7.458
7.422
7.404
7.301
7.281
7.267
7.016
6.983
6.962
6.886
6.869
6.851
6.830

— 5.400

— 2.297
— 2.180



^1H NMR, 400 MHz, CDCl_3

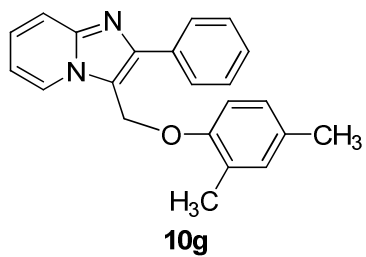


— 154.06
 — 146.05
 — 145.44
 — 133.89
 — 131.78
 — 130.55
 — 128.67
 — 128.11
 — 127.09
 — 127.01
 — 125.19
 — 124.03
 — 117.63
 — 115.86
 — 112.54
 — 111.62

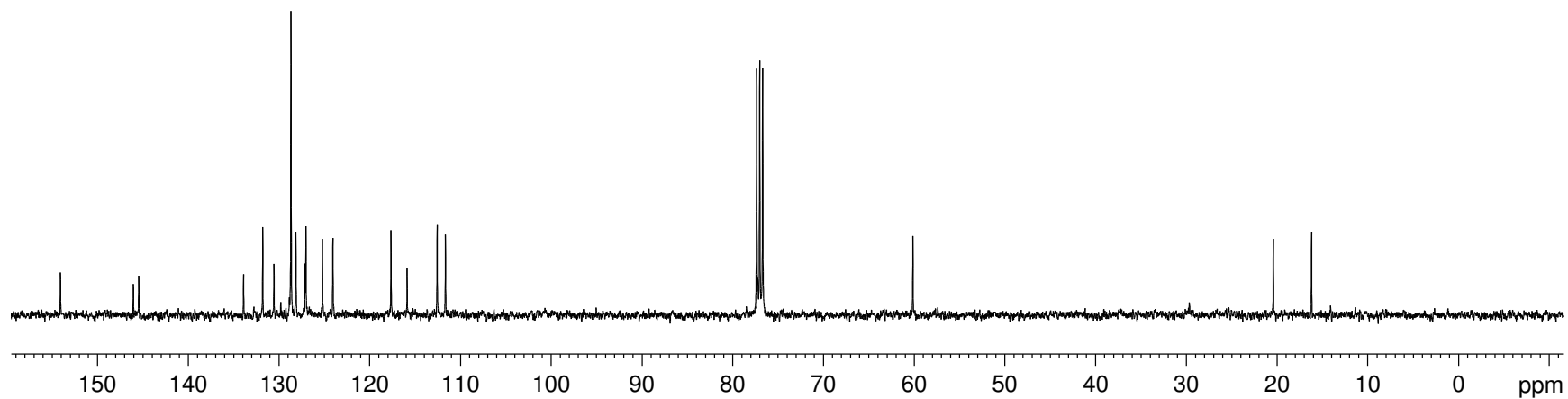
77.32
 77.00
 76.68

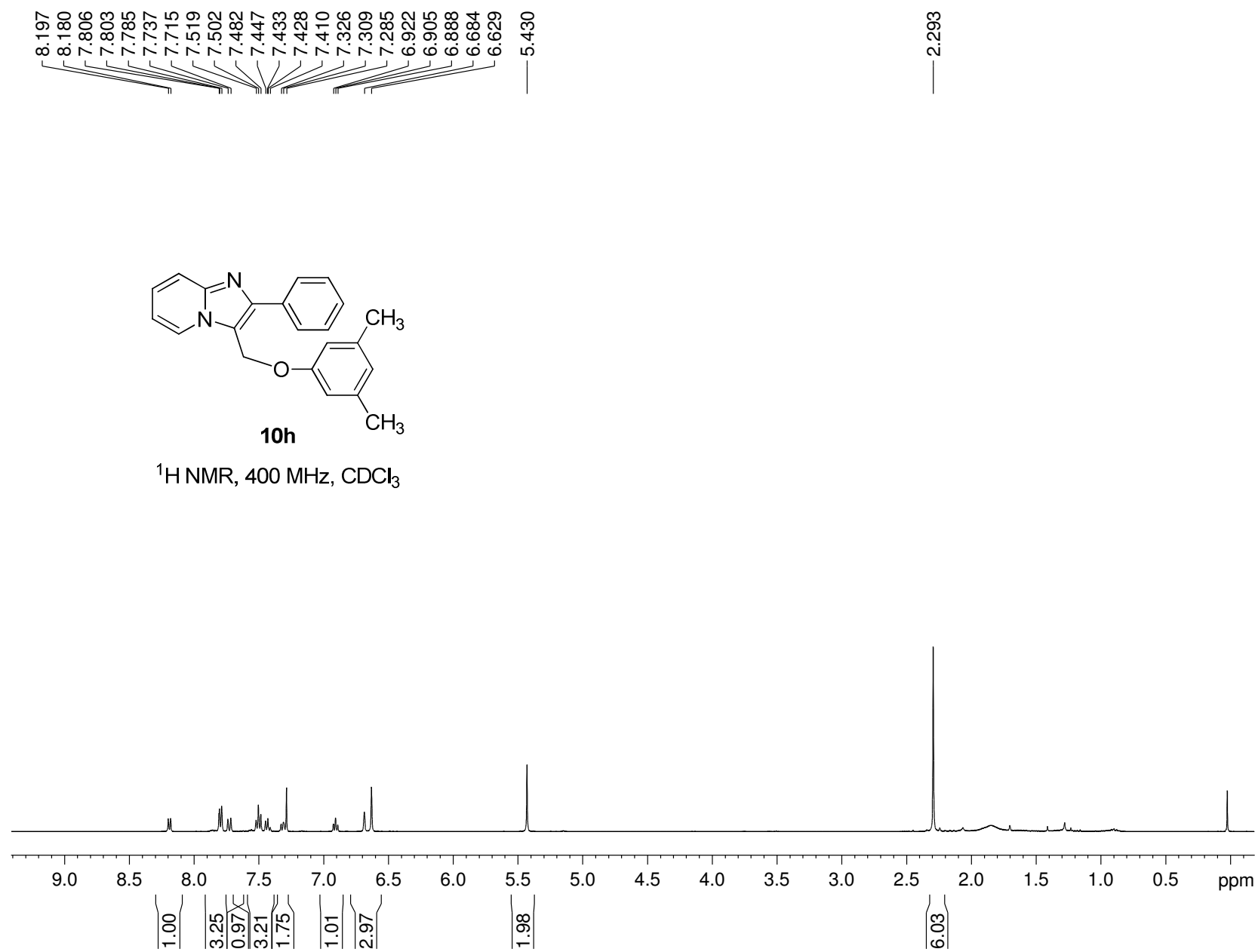
— 60.12

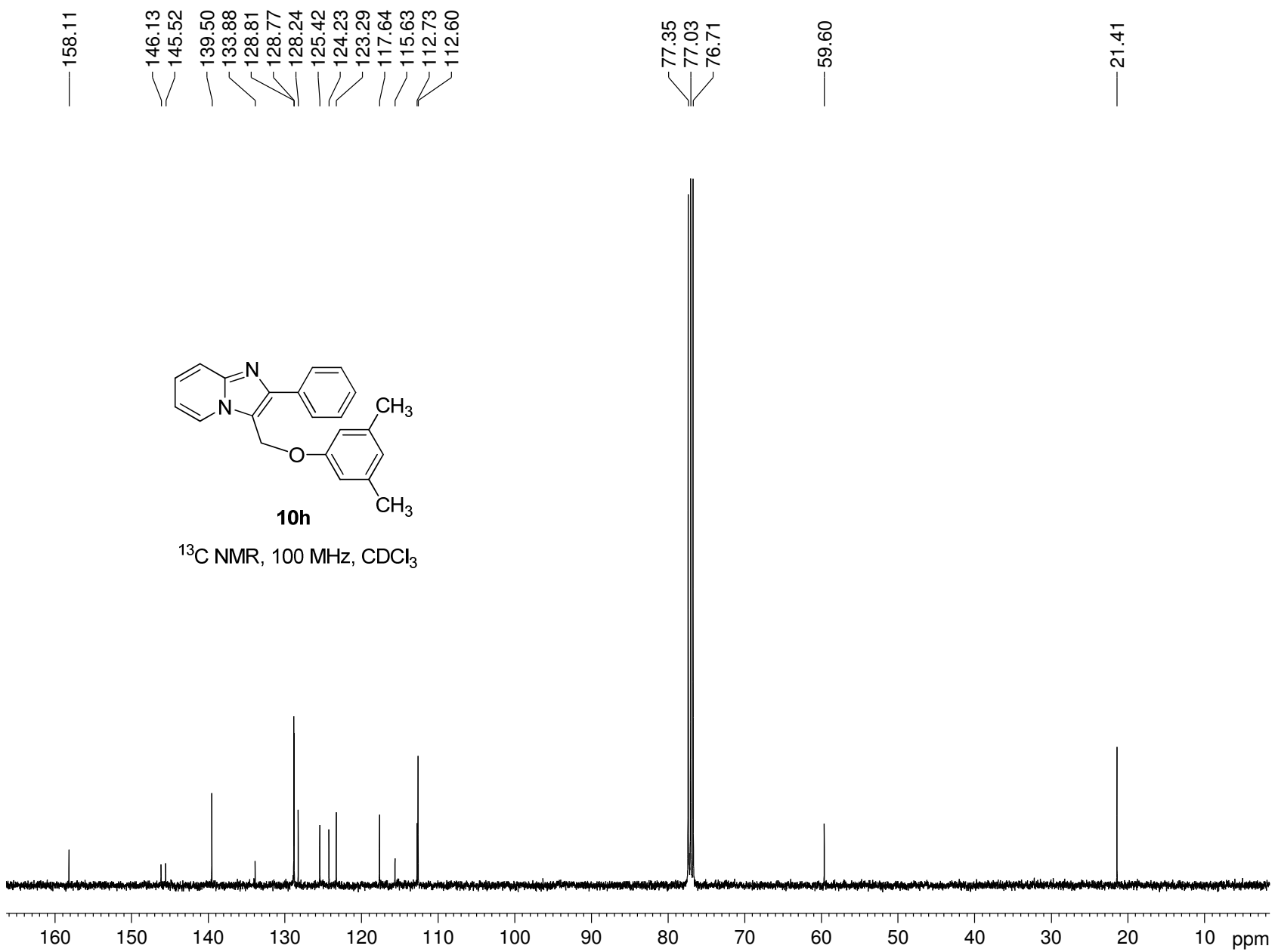
— 20.41
 — 16.16

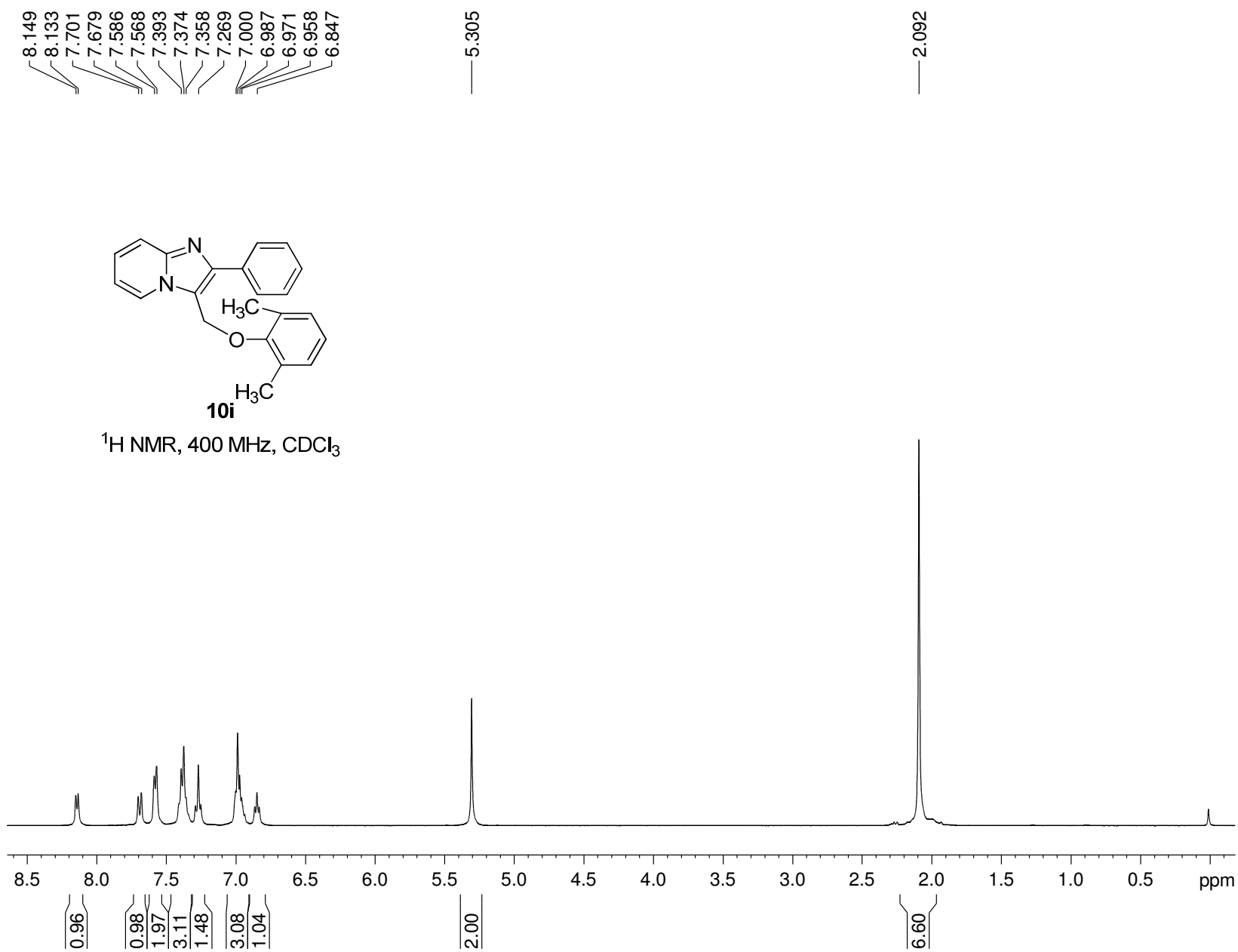


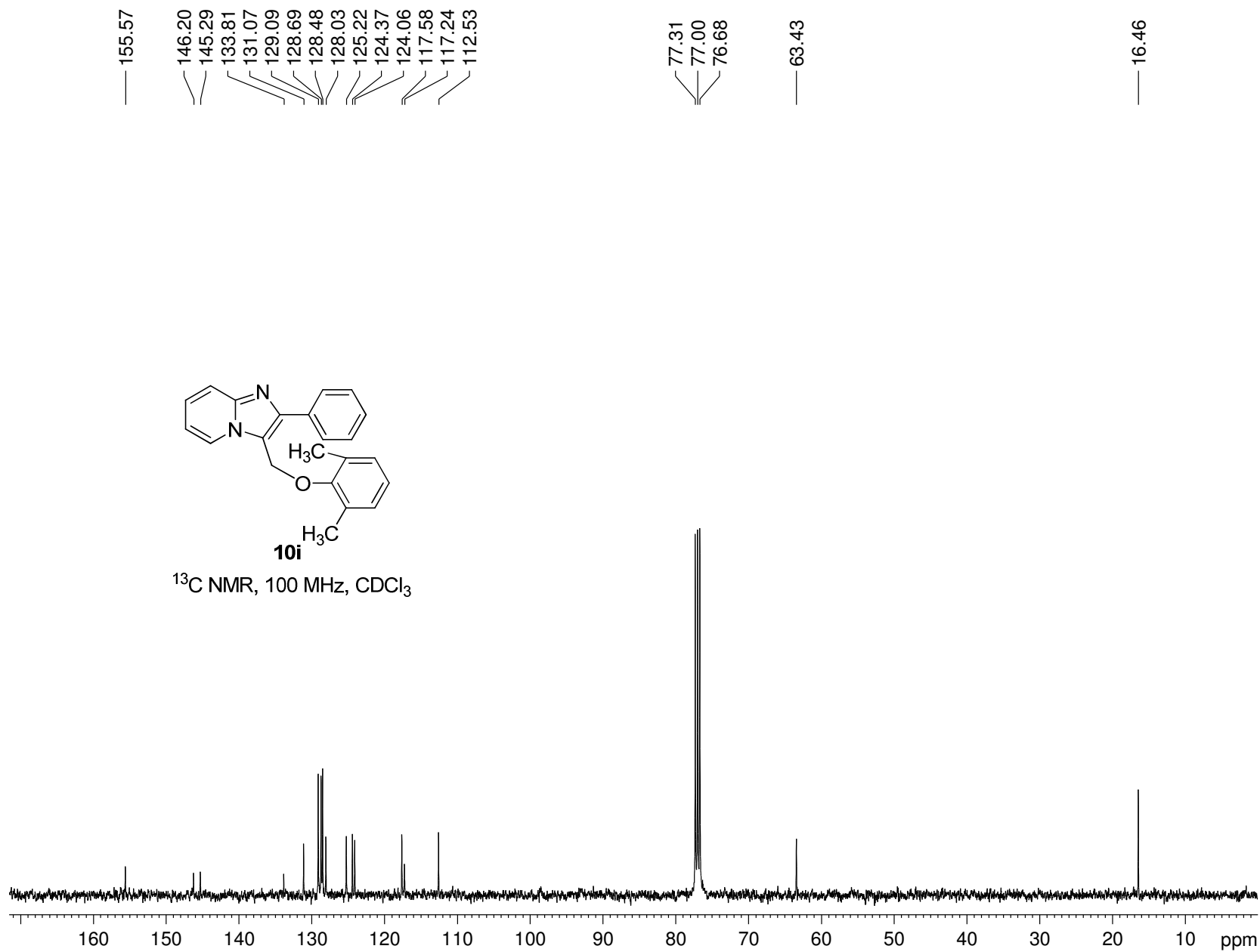
^{13}C NMR, 100 MHz, CDCl_3

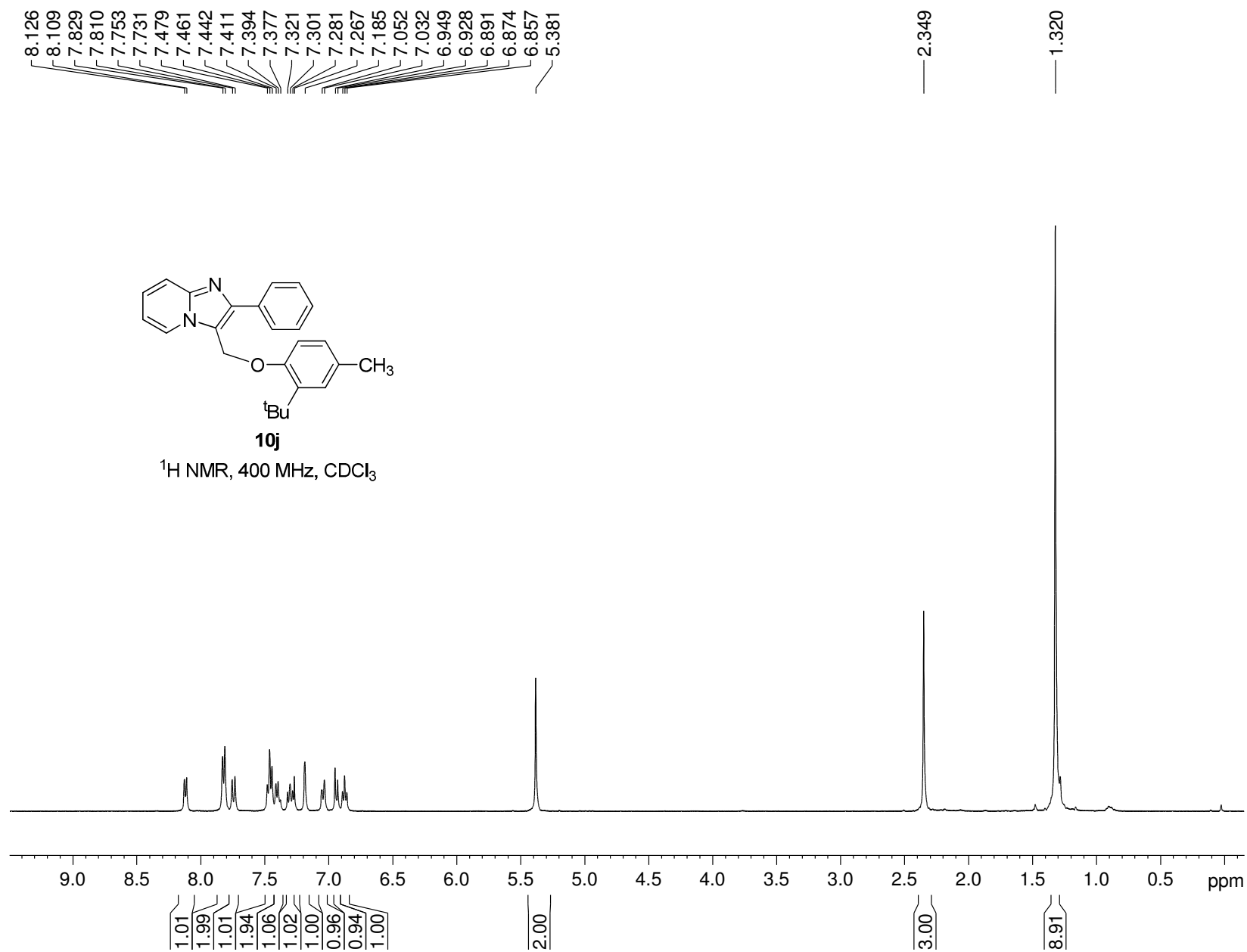












— 154.96
 — 146.15
 — 145.49
 — 138.13
 — 133.83
 — 129.99
 — 128.72
 — 128.62
 — 128.14
 — 127.92
 — 127.17
 — 125.29
 — 123.80
 — 117.66
 — 115.69
 — 112.60
 — 111.54

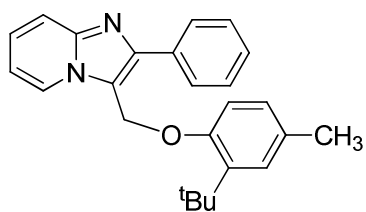
— 77.32
 — 77.00
 — 76.68

— 59.43

— 34.74

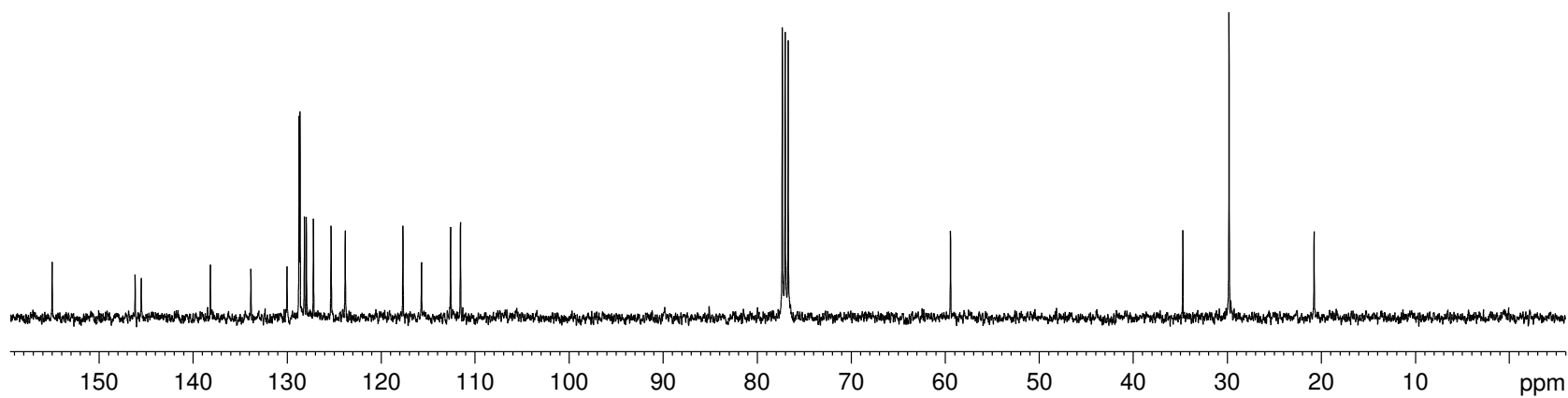
— 29.83

— 20.77



10j

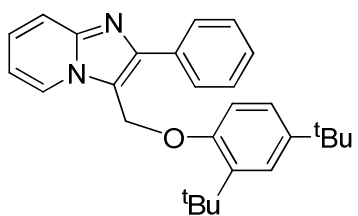
^{13}C NMR, 100 MHz, CDCl_3



8.123
8.106
7.817
7.799
7.753
7.731
7.473
7.455
7.436
7.422
7.416
7.392
7.305
7.268
7.231
6.985
6.964
6.884
6.867
6.851

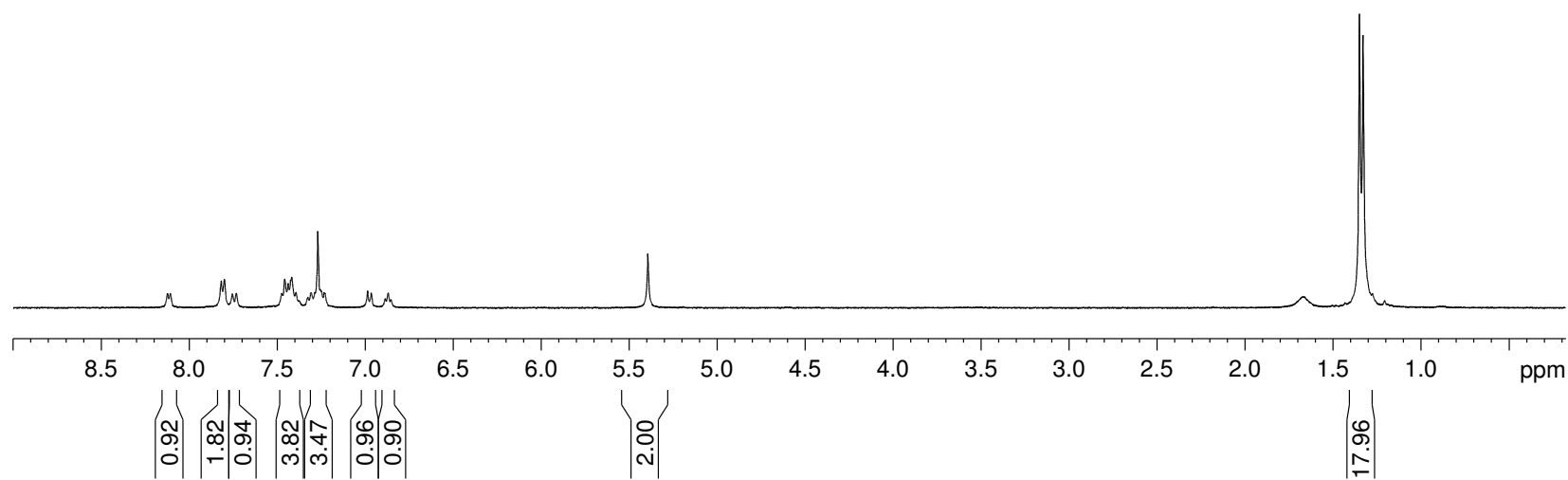
5.393

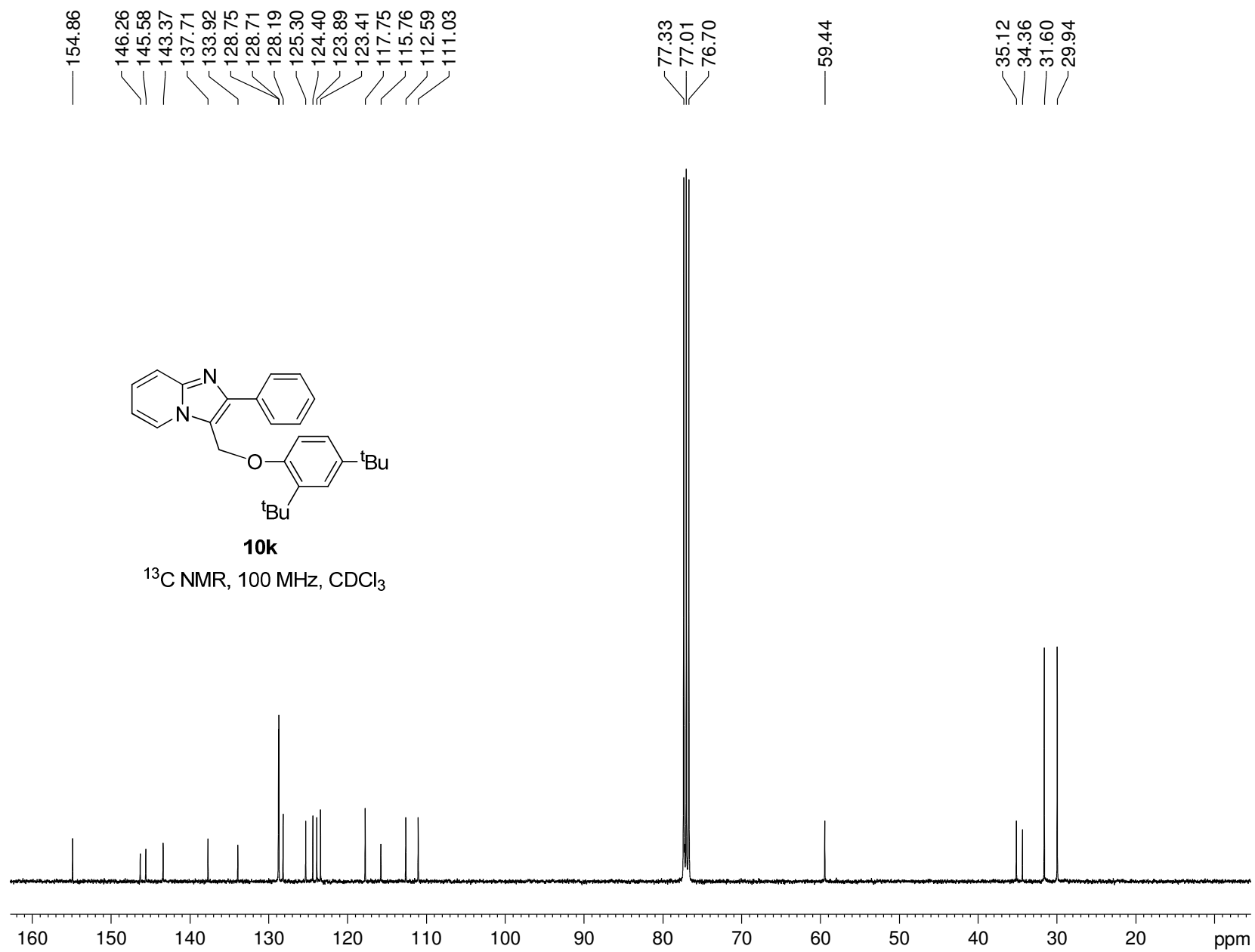
1.348
1.327



10k

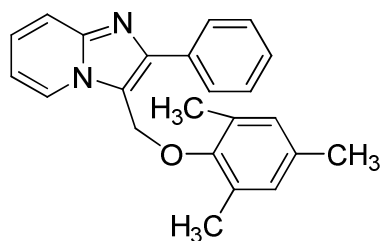
^1H NMR, 400 MHz, CDCl_3





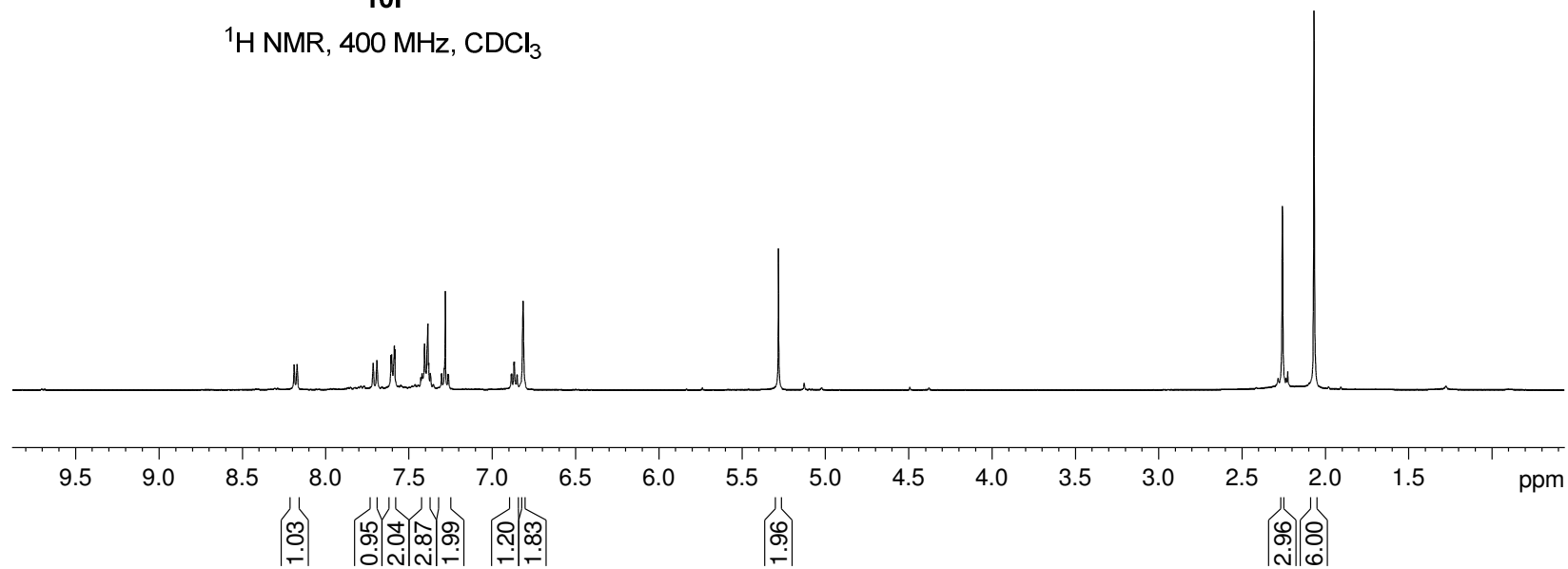
8.188
8.171
7.714
7.692
7.607
7.603
7.598
7.587
7.584
7.420
7.406
7.397
7.391
7.386
7.382
7.371
7.369
7.305
7.302
7.287
7.281
7.265
7.262
6.886
6.883
6.868
6.866
6.851
6.849
6.814
5.281

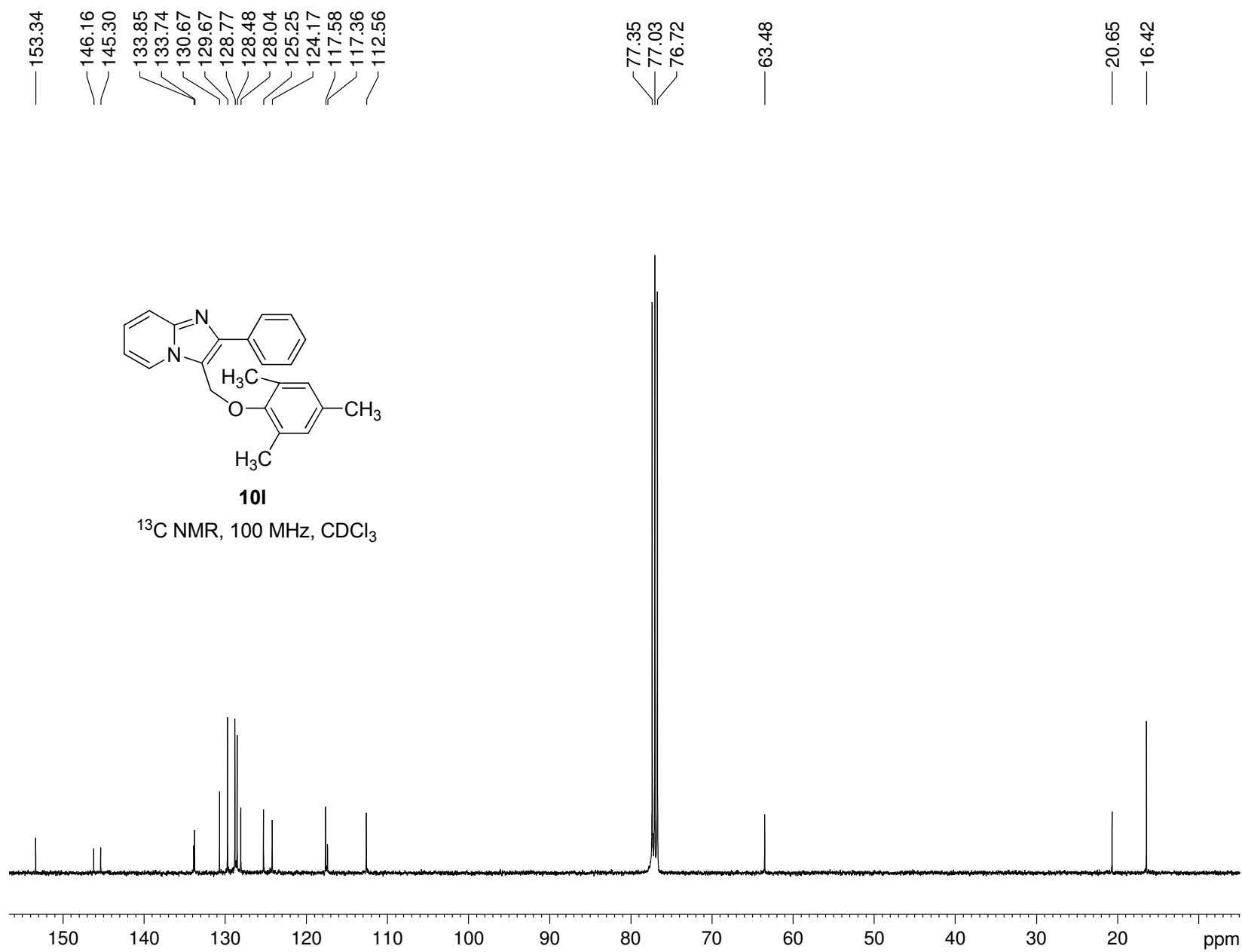
2.257
2.067



10I

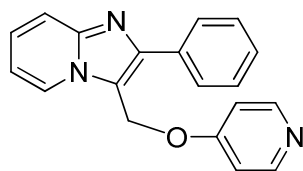
^1H NMR, 400 MHz, CDCl_3





8.479
8.462
7.736
7.715
7.398
7.377
7.345
7.298
7.266
7.107
7.088
6.985
6.968
6.952

—4.871



10m

^1H NMR, 400 MHz, CDCl_3

