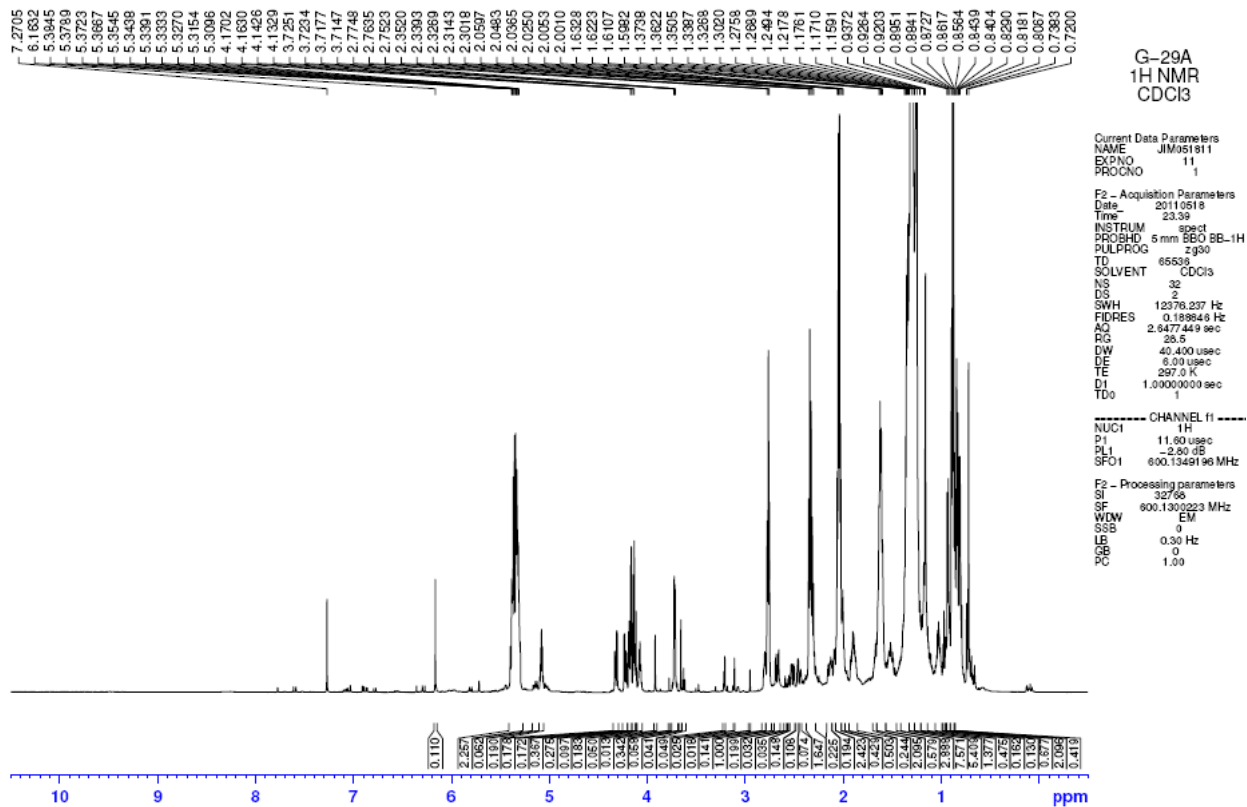
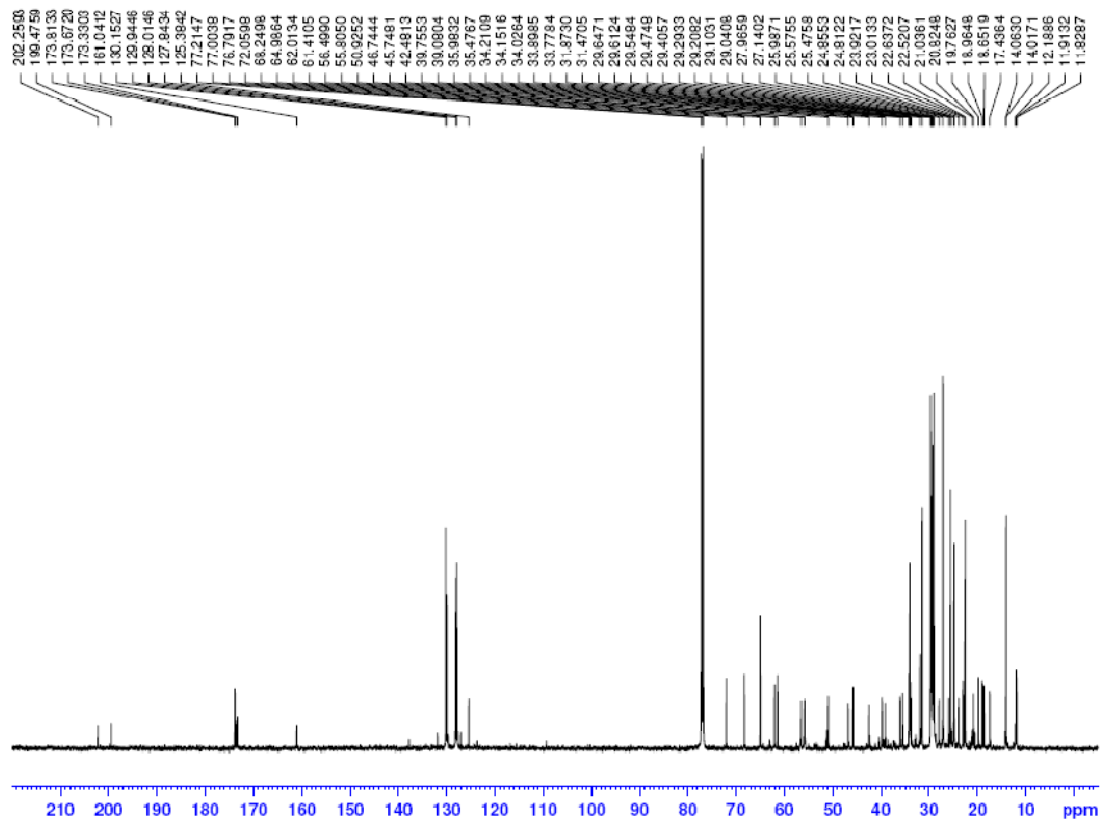


Compound 1 (G-29A):

¹H NMR



13C NMR



G-29A
13C NMR
CDCl3

Current Data Parameters
 NAME JIM051811
 EXPNO 23
 PROCNO 1

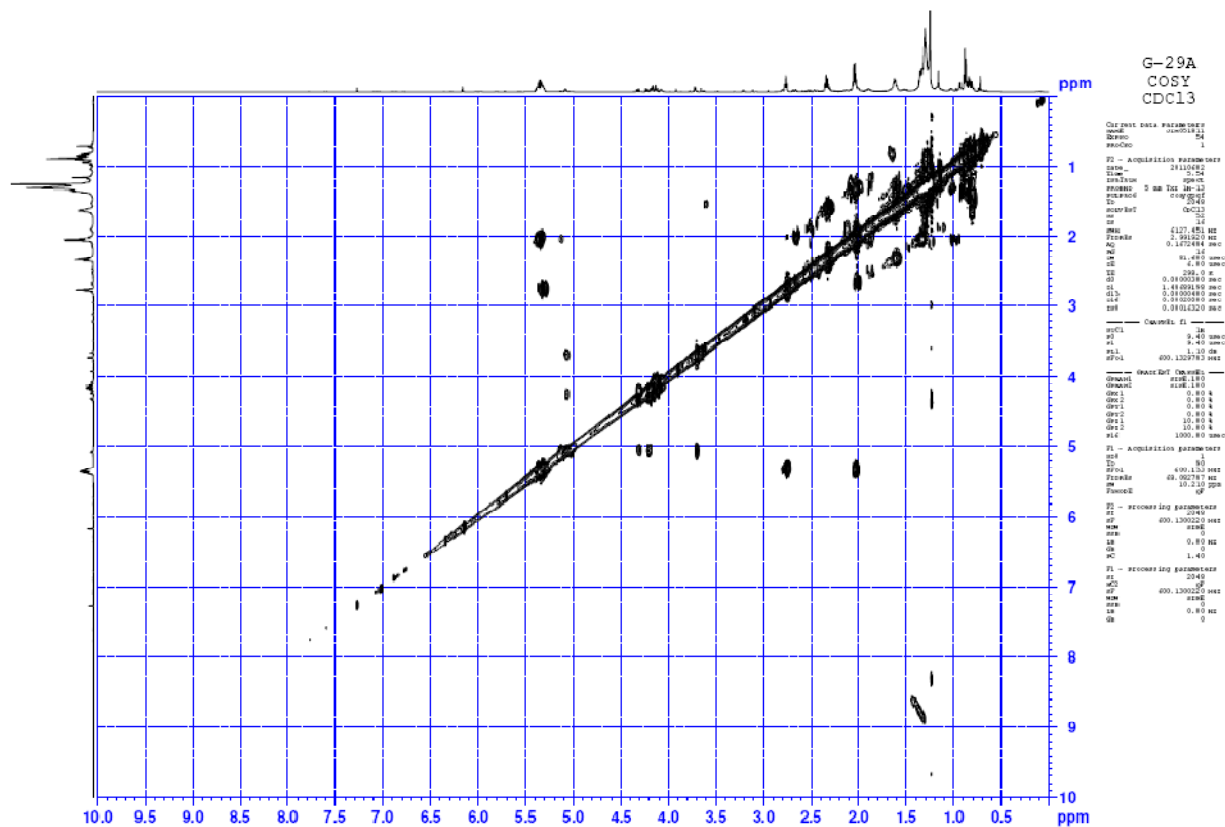
F2 - Acquisition Parameters
 Date 20110519
 Time 1.01
 INSTRUM spect
 PROBHD 5 mm BBO BB-1H
 PULPROG zgpg30
 ID 65836
 SOLVENT CDCl3
 NS 818
 DS 5
 SWH 42372.883 Hz
 FIDRES 0.64659 Hz
 AQ 0.7733669 sec
 RG 322.5
 DW 11.200 usec
 DE 8.50 usec
 TE 297.0 K
 D1 2.0000000 sec
 d11 0.0300000 sec
 DELTA 1.8999999 sec
 TD0 1

----- CHANNEL f1 -----
 NUC1 13C
 P1 10.30 usec
 PL1 8.50 dB
 SFO1 150.9194983 MHz

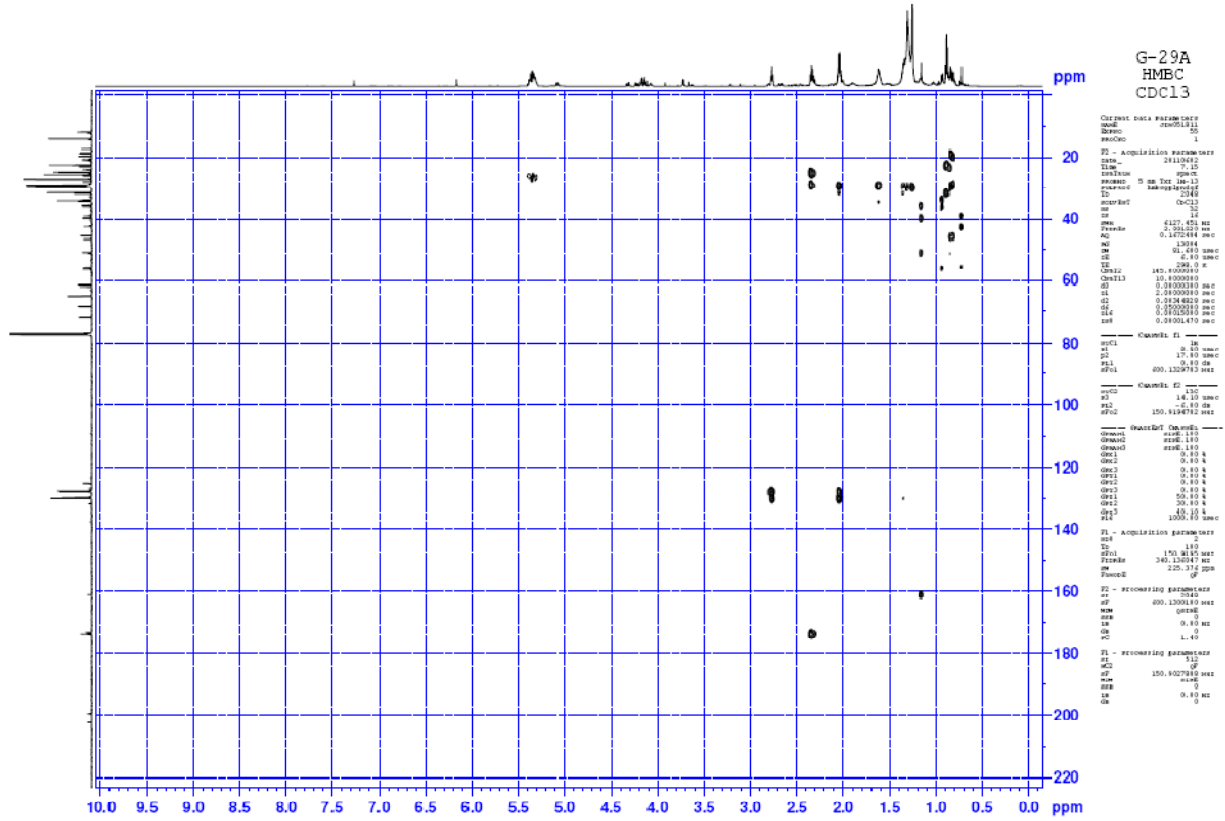
----- CHANNEL f2 -----
 CPDPRG2 waltz16
 NUC2 1H
 PCPD2 7.000 usec
 PL2 -2.50 dB
 PL12 12.01 dB
 PL13 16.80 dB
 SFO2 600.1324005 MHz

F2 - Processing parameters
 SI 32768
 SF 150.9028197 MHz
 WDW EM
 SSB 0
 LB 3.00 Hz
 GB 0
 PC 1.40

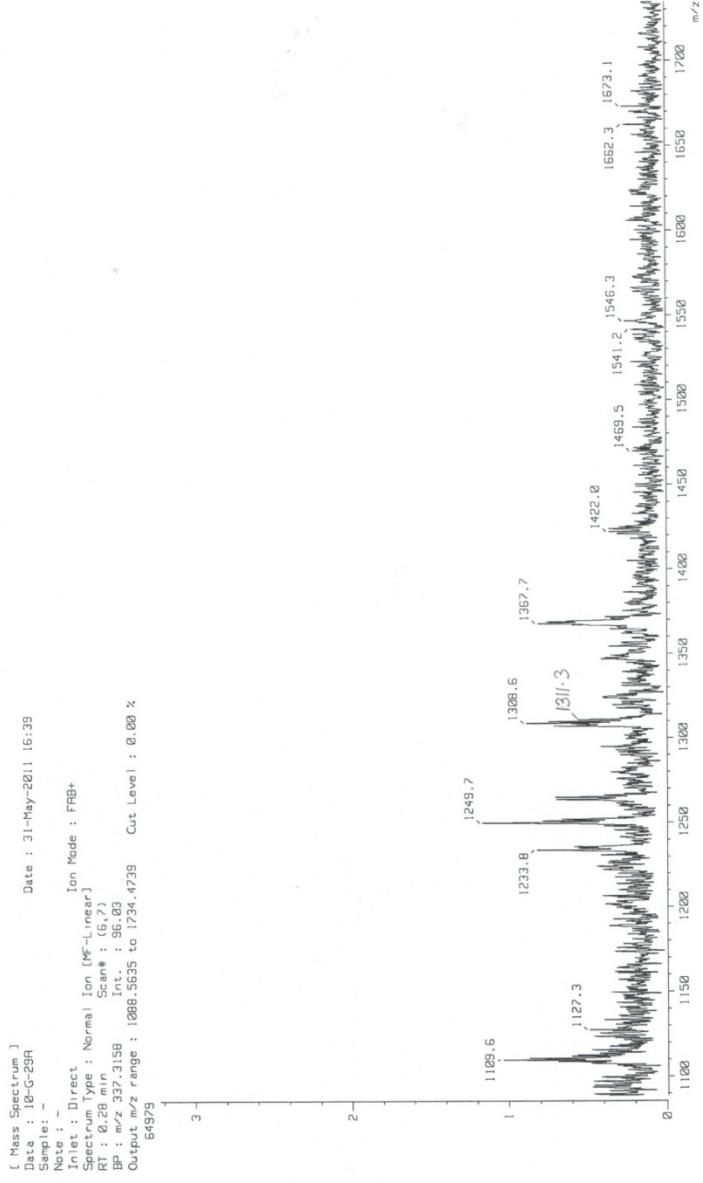
COSY



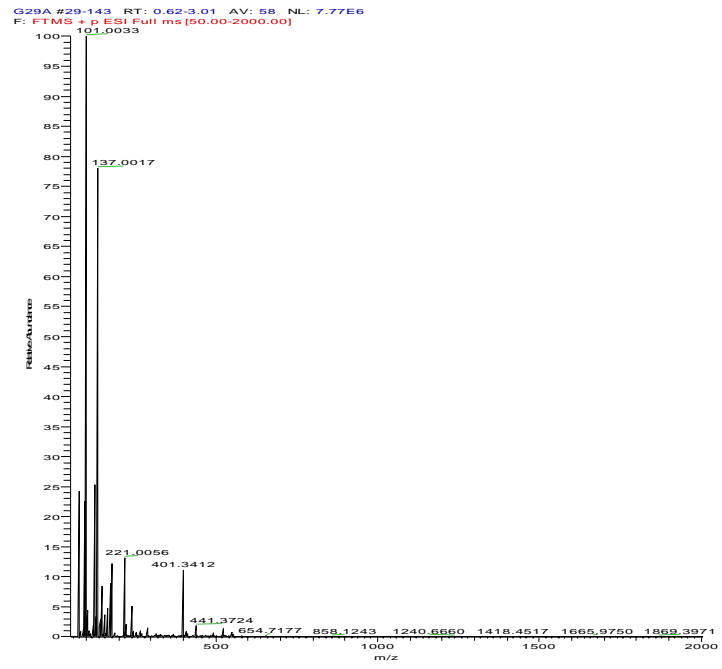
HMBC



FAB MS

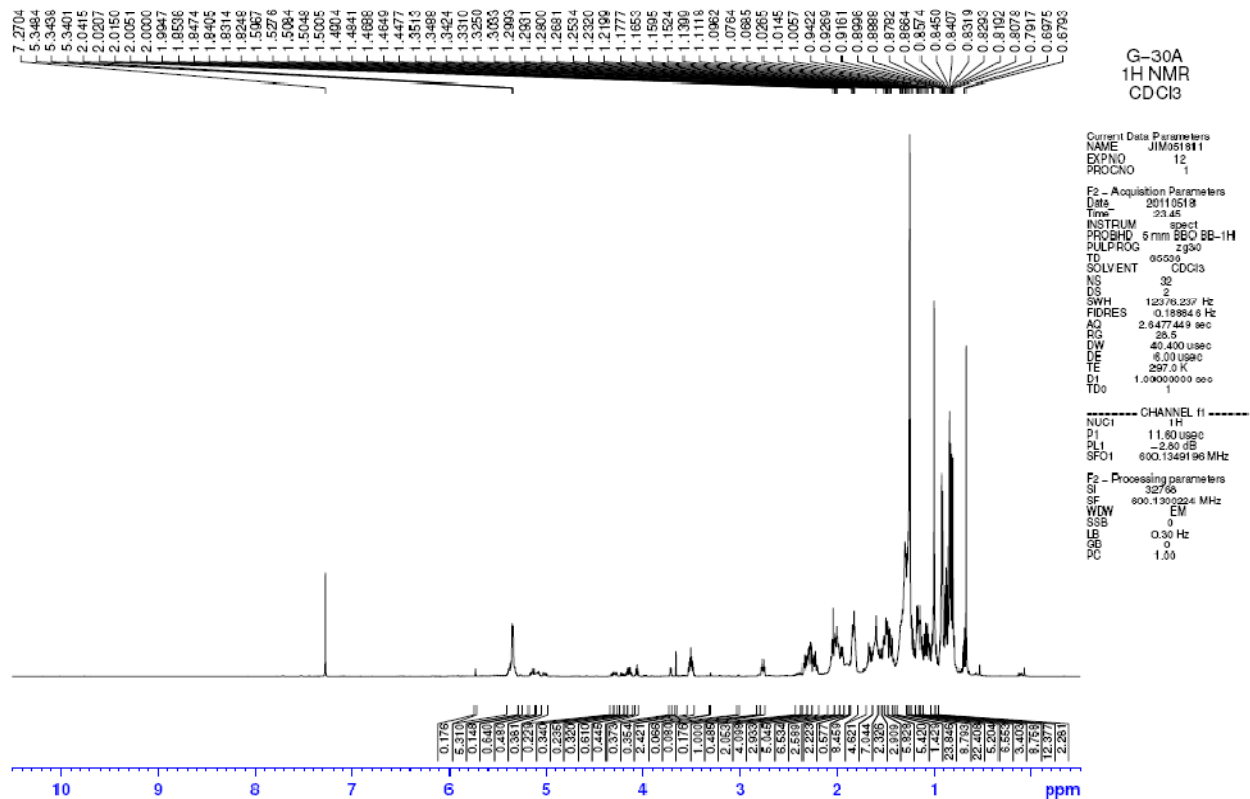


ESIFT/MS

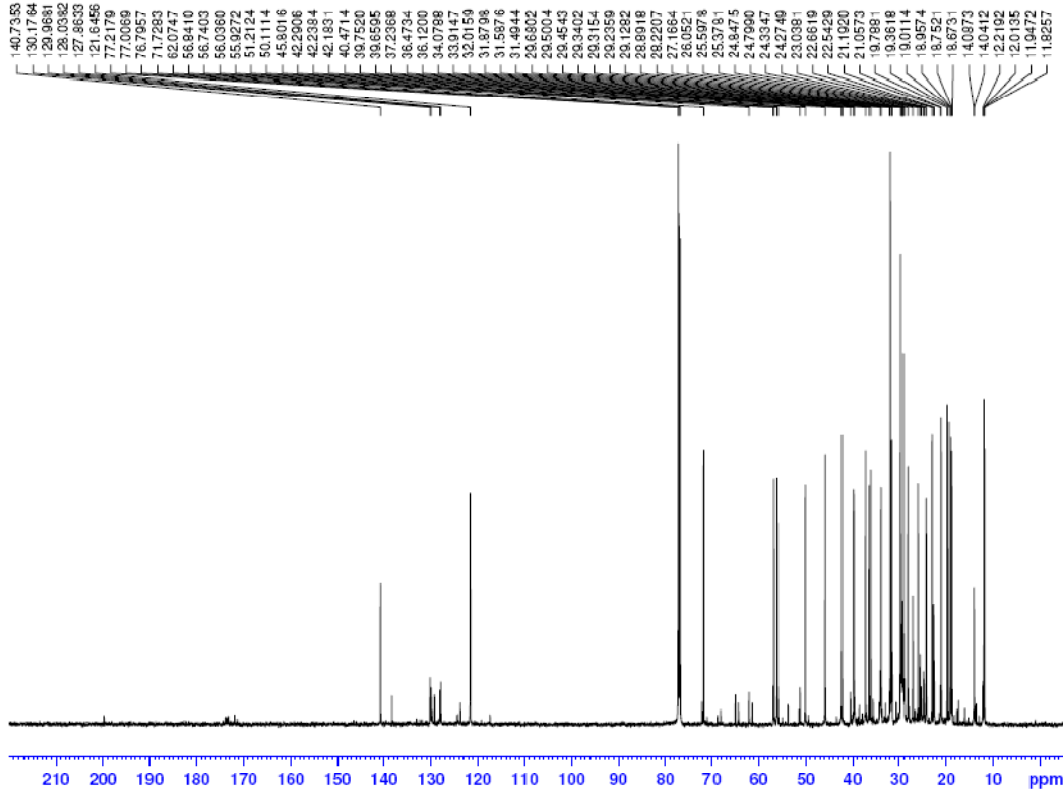


Compound 2 (G-30A)

¹H NMR



13 C NMR



G-30A
13C NMR
CDCl3

Current Data Parameters
NAME JIM981911
EXPNO 28
PROCNO 1

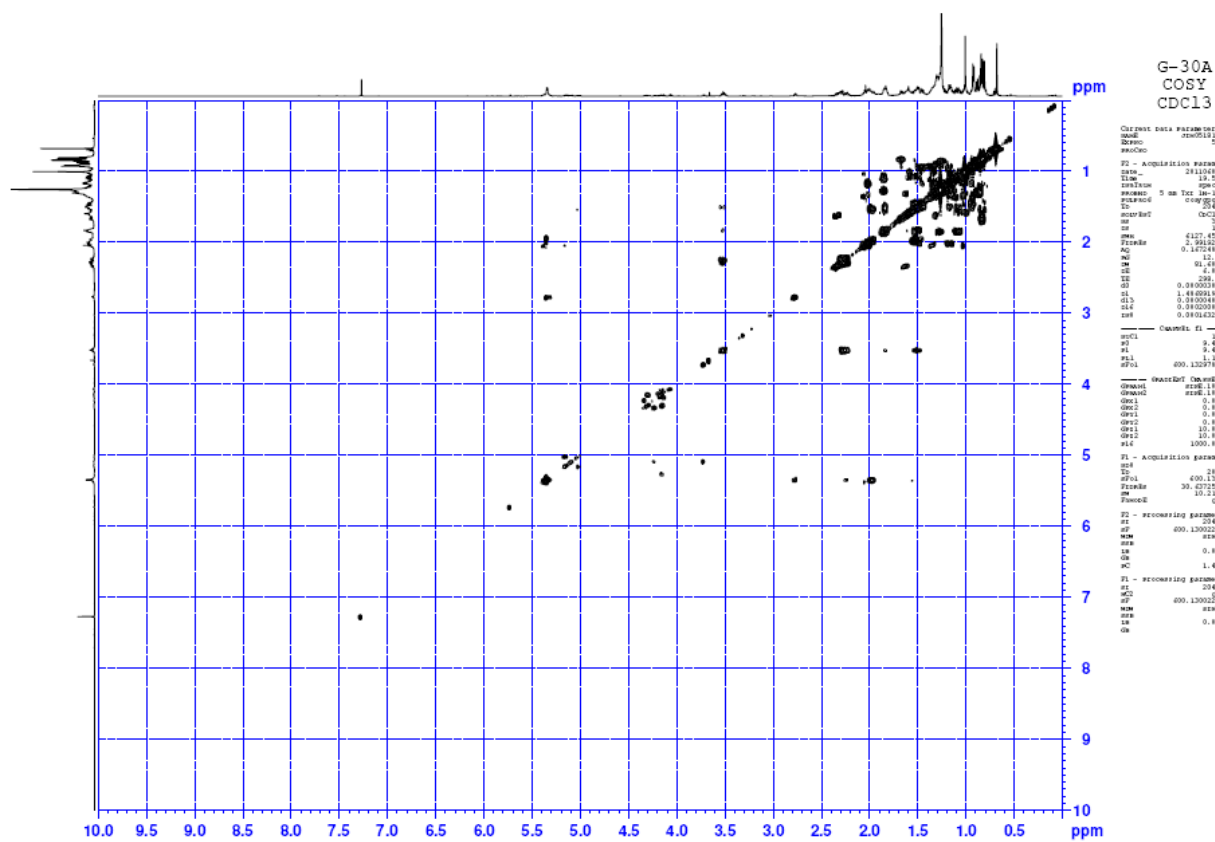
F2 - Acquisition Parameters
Date_ 20110523
Time 17:39
INSTRUM spect
PROBHD 5 mm BBO BB-1H
PULPROG zgpg30
TD 65536
SOLVENT CDCl3
NS 1811
DS 5
SWH 42372.883 Hz
FIDRES 0.646559 Hz
AQ 0.7733659 sec
RG 181
DW 11.800 usec
DE 6.00 usec
TE 297.0 K
D1 2.00000000 sec
d11 0.03000000 sec
DELTA 1.89000000 sec
TD0 1

----- CHANNEL f1 -----
NUC1 13C
P1 10.30 usec
PL1 8.50 dB
SFO1 150.9194083 MHz

----- CHANNEL f2 -----
CPDPRG2 waltz16
NUC2 1H
PCPD2 70.00 usec
PL2 -2.80 dB
PL12 12.81 dB
PL13 18.50 dB
SFO2 600.1362470 MHz

F2 - Processing parameters
SI 32736
SF 150.9028173 MHz
WDW EM
SSS 0
LB 3.00 Hz
GB 0
PC 1.40

COSY



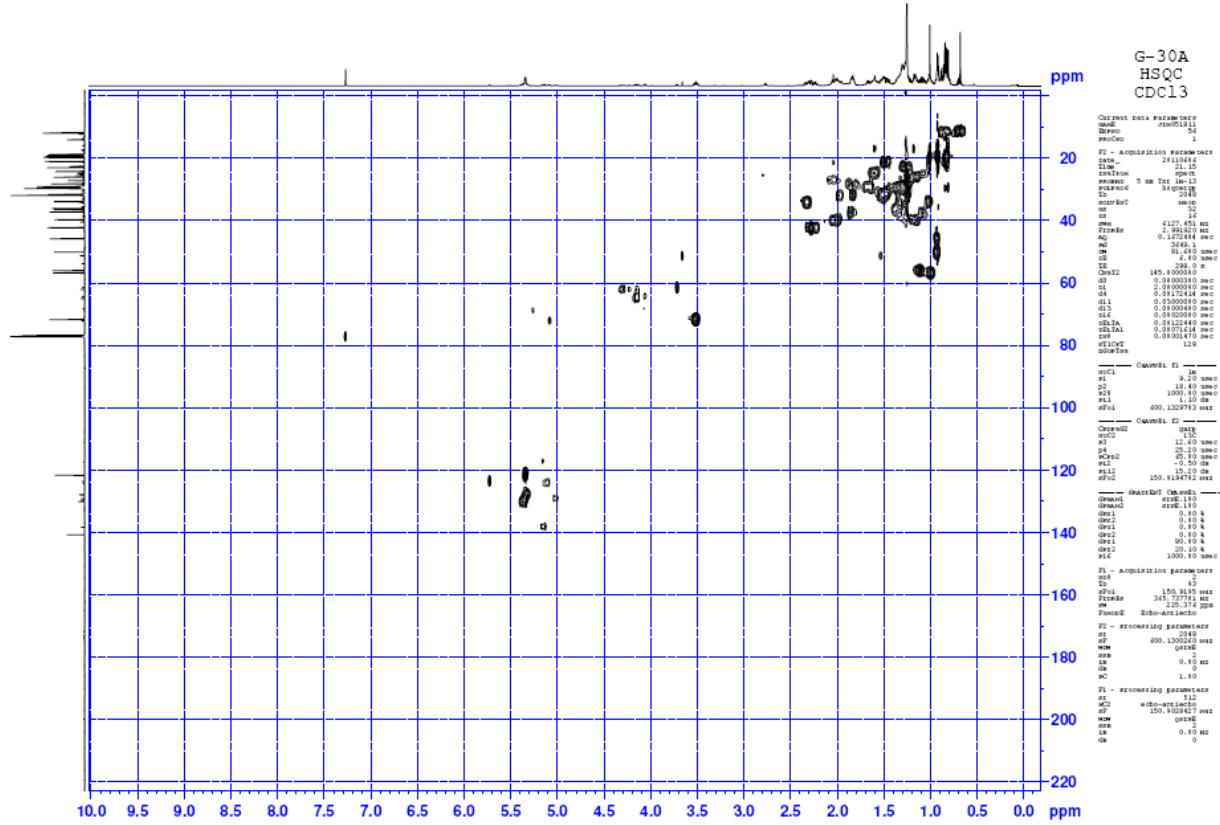
G-30A
COSY
CDCl3

```

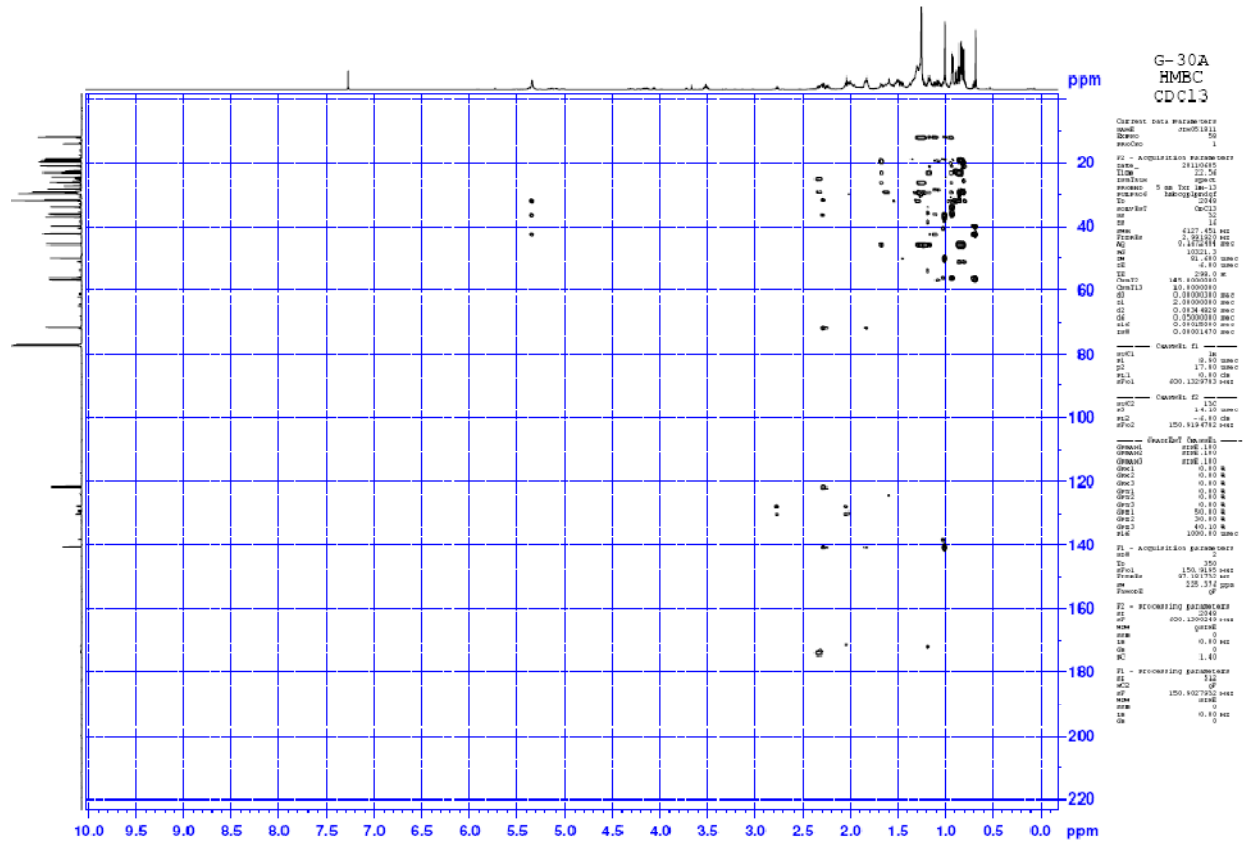
Output data parameters
NAME      2000111
Date_    5
PROCNO    1
----- Acquisition parameters
Date_    211111
Time     12.55
INSTRUM   spect
PROBHD    5 mm TCI 1H-13
PULPROG   zgpg30
TD        32768
AQ        0.163343 sec
RG        32
SF        400.146 MHz
FIDRES    2.941324 Hz
AQRES    0.163343 sec
RGRES    12
NUC1      13
NUC2      1H
PC        1.40 sec
DE        2.00
TE        300.2 K
SI        0.8000130 sec
SFO1      400.146 MHz
SFO2      100.628150 MHz
SF12      0.8000130 sec
SF122     0.8000130 sec
SF123     0.8000130 sec
----- Channel f1 -----
NUC1      13
P1        8.00 sec
PL        0.00 dB
SFO1      400.146130 MHz
SFO2      100.628150 MHz
----- Channel f2 -----
GAINF2    212.110
SHF2F2    212.110
GMR2      0.40 K
GMR3      0.40 K
GMR4      0.40 K
GMR5      0.40 K
GMR6      10.10 K
GMR7      10.10 K
SFO2      100.628150 MHz
----- Acquisition parameters
Date_    211
Time     12.55
INSTRUM   spect
PROBHD    5 mm TCI 1H-13
PULPROG   zgpg30
TD        32768
AQ        0.163343 sec
RG        32
SF        400.146 MHz
FIDRES    2.941324 Hz
AQRES    0.163343 sec
RGRES    12
NUC1      13
NUC2      1H
PC        1.40 sec
DE        2.00
TE        300.2 K
SI        0.8000130 sec
SFO1      400.146130 MHz
SFO2      100.628150 MHz
SF12      0.8000130 sec
SF122     0.8000130 sec
SF123     0.8000130 sec
----- Processing parameters
SI        32768
SF        400.146130 MHz
SFO1      400.146130 MHz
SFO2      100.628150 MHz
SF12      0.8000130 sec
SF122     0.8000130 sec
SF123     0.8000130 sec
----- Processing parameters
SI        32768
SF        400.146130 MHz
SFO1      400.146130 MHz
SFO2      100.628150 MHz
SF12      0.8000130 sec
SF122     0.8000130 sec
SF123     0.8000130 sec

```

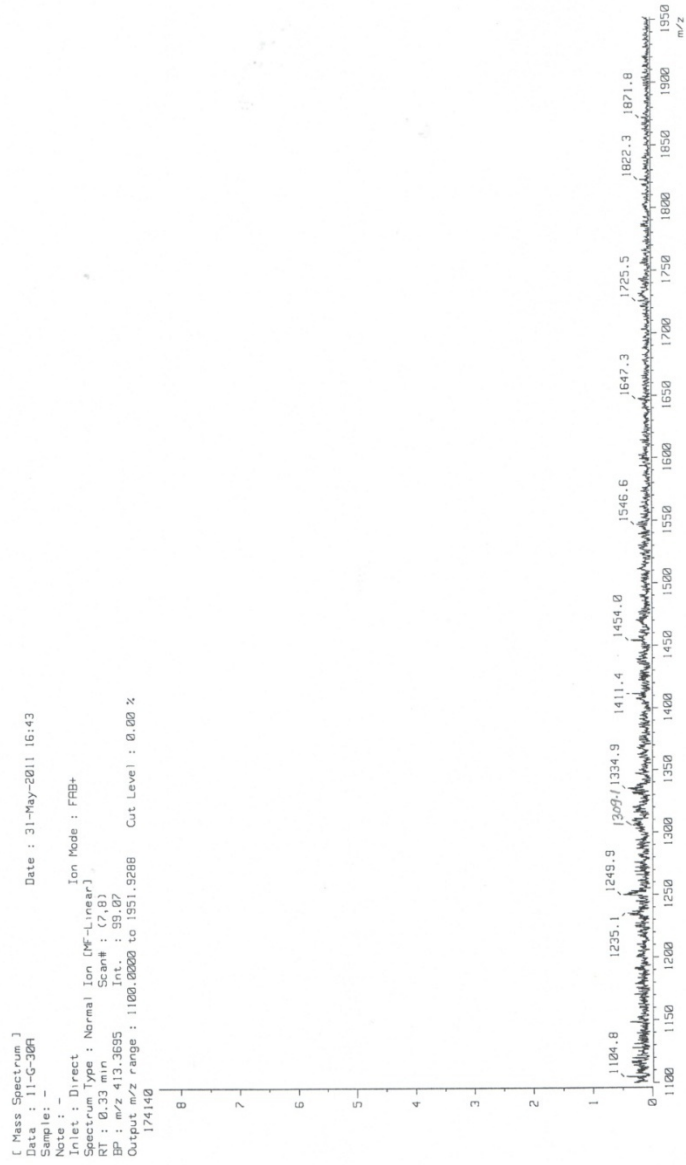
HSQC



HMBC



FAB/MS



ESIFT/MS

