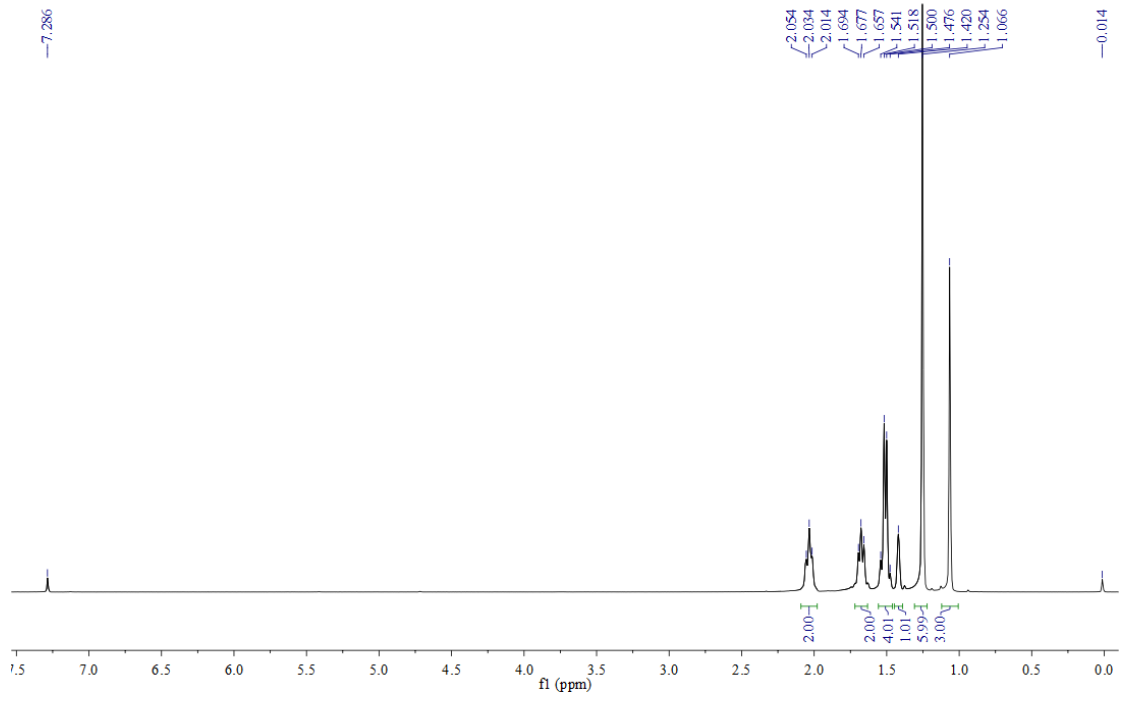
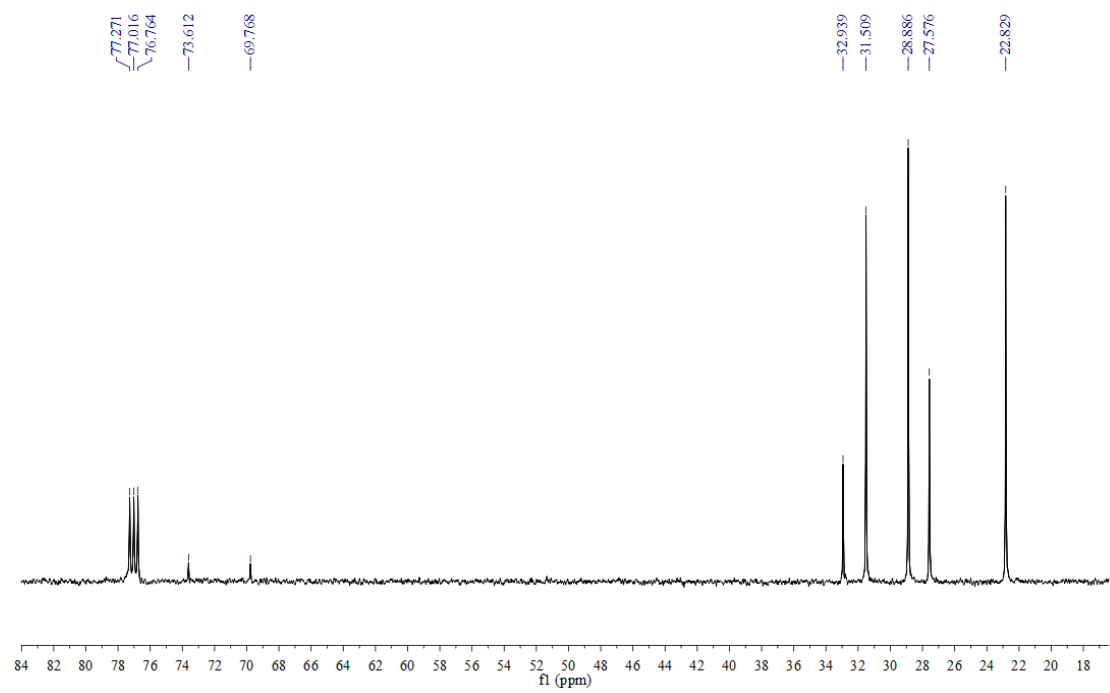


Bruker Avance DRX 500, A&T Center BNU  
Sample:Eucalyptol Solvent:CDCl3  
Spectrum: 1H

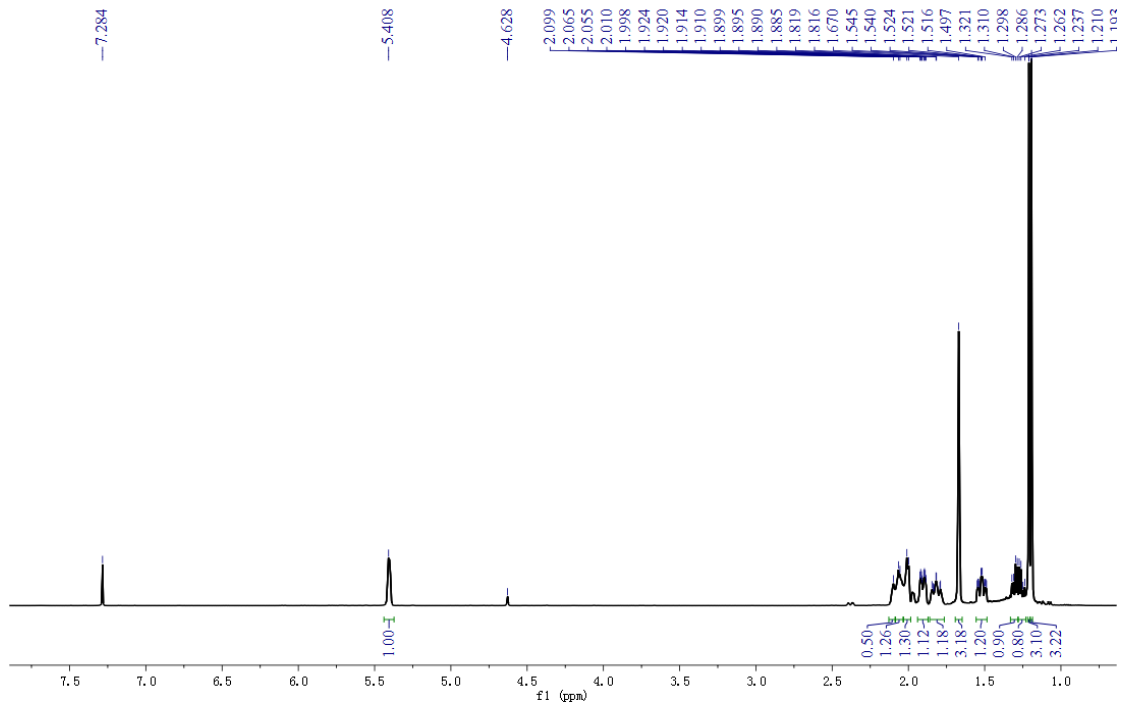


Bruker Avance DRX 500, A&T Center BNU  
Sample:Eucalyptol Solvent:CDCl3  
Spectrum: 13C



**Fig. 1** The  $^1\text{H}$  and  $^{13}\text{C}$ -NMR spectra of eucalyptol

Avance DRX 500 Bruker, A&T Center BNU  
Sample:  $\alpha$ -Terpineol Solvent: CDCl<sub>3</sub>  
Spectrum: 1H



Bruker Avance DRX 500, A&T Center BNU  
Sample:  $\alpha$ -Terpineol Solvent: CDCl<sub>3</sub>  
Spectrum: 13C

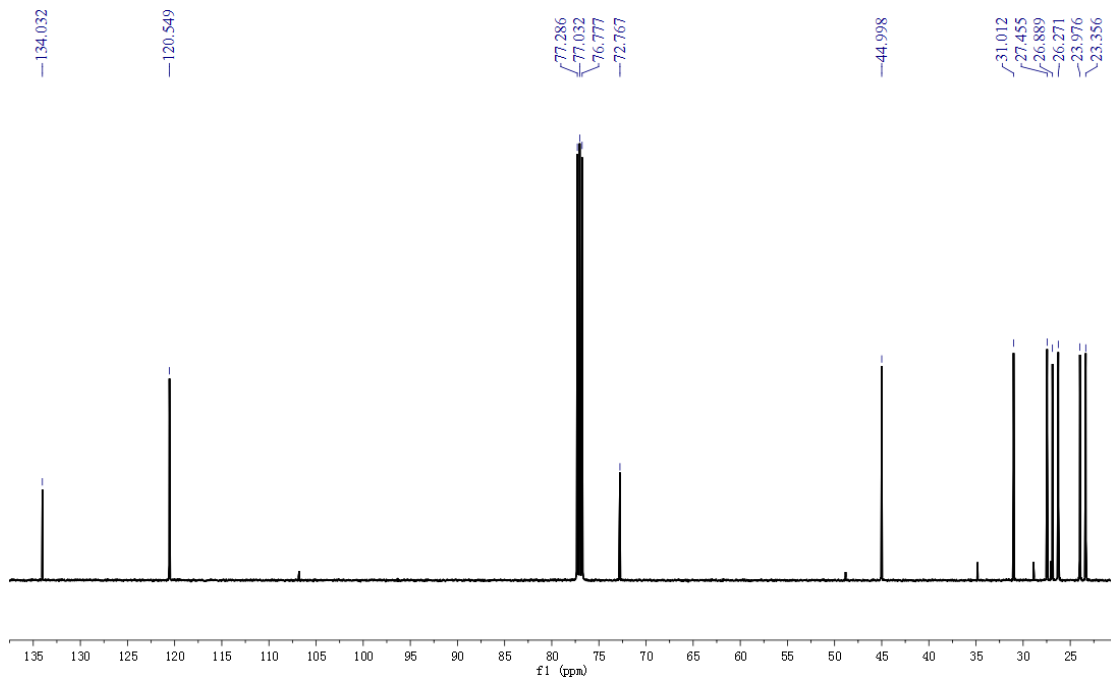
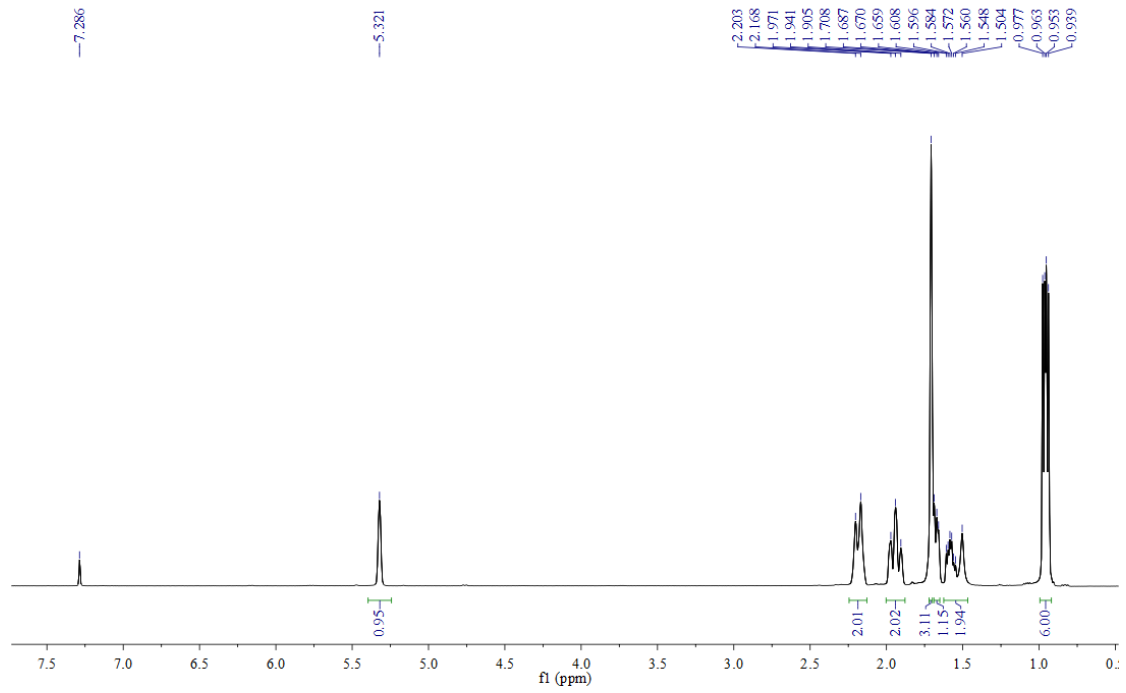


Fig. 2 The <sup>1</sup>H and <sup>13</sup>C-NMR spectra of  $\alpha$ -terpineol

Avance DRX 500 Bruker, A&T Center BNU  
Sample:4-Terpineol Solvent:CDCl3  
Spectrum: 1H



Avance DRX 500 Bruker, A&T Center BNU  
Sample:4-Terpineol Solvent:CDCl3  
Spectrum: 13C

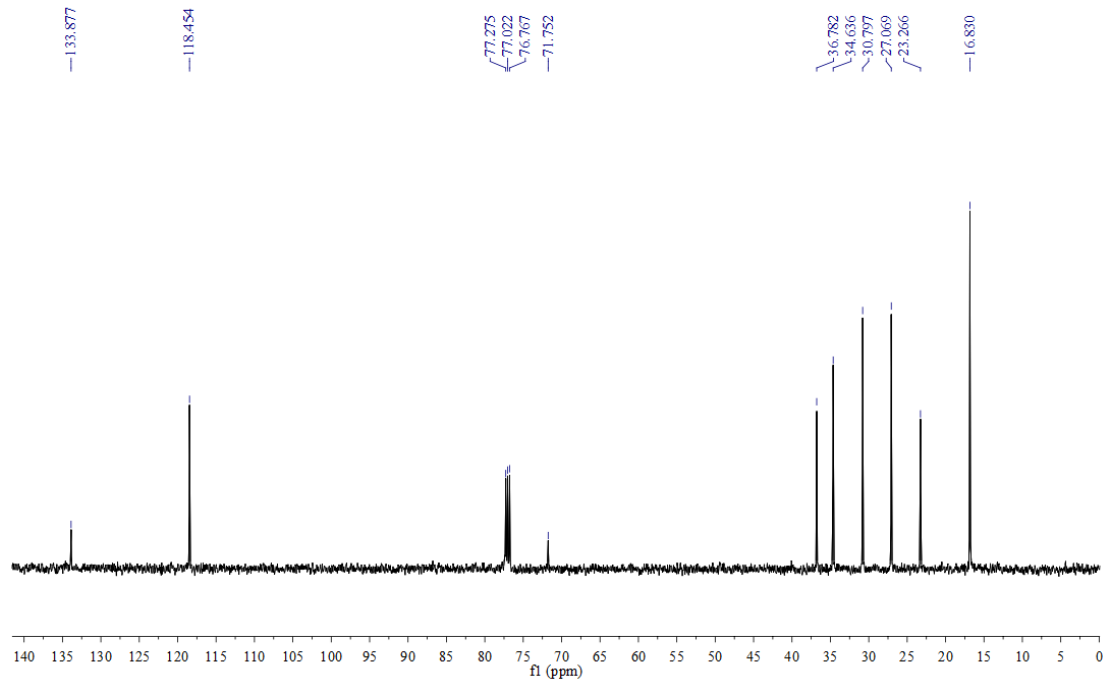
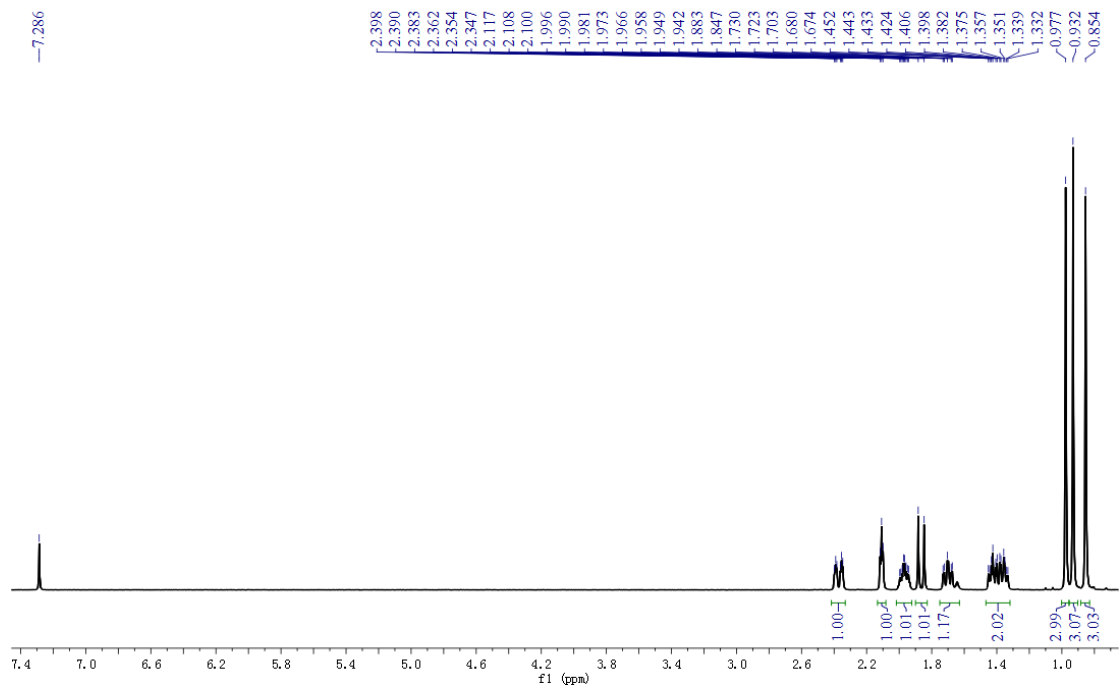


Fig. 3 The  $^1\text{H}$  and  $^{13}\text{C}$ -NMR spectra of 4-terpineol

Bruker Avance DRX 500, A&T Center BNU  
Sample: Camphor Solvent: CDCl<sub>3</sub>  
Spectrum: 1H



Bruker Avance DRX 500, A&T Center BNU  
Sample: Camphor Solvent: CDCl<sub>3</sub>  
Spectrum: 13C

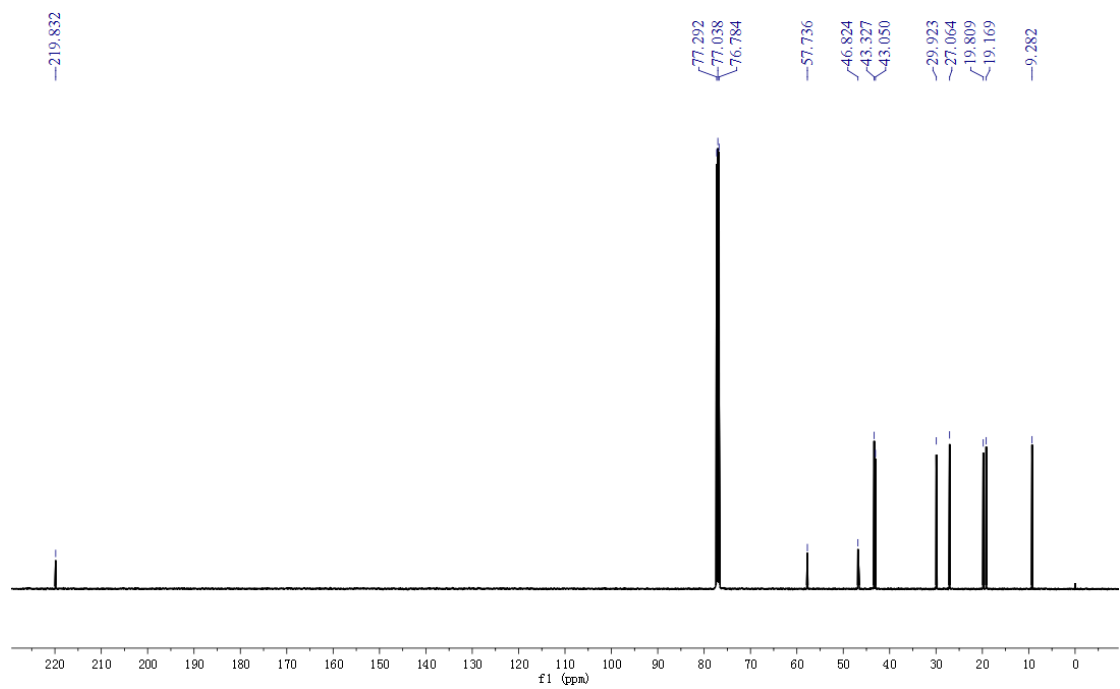
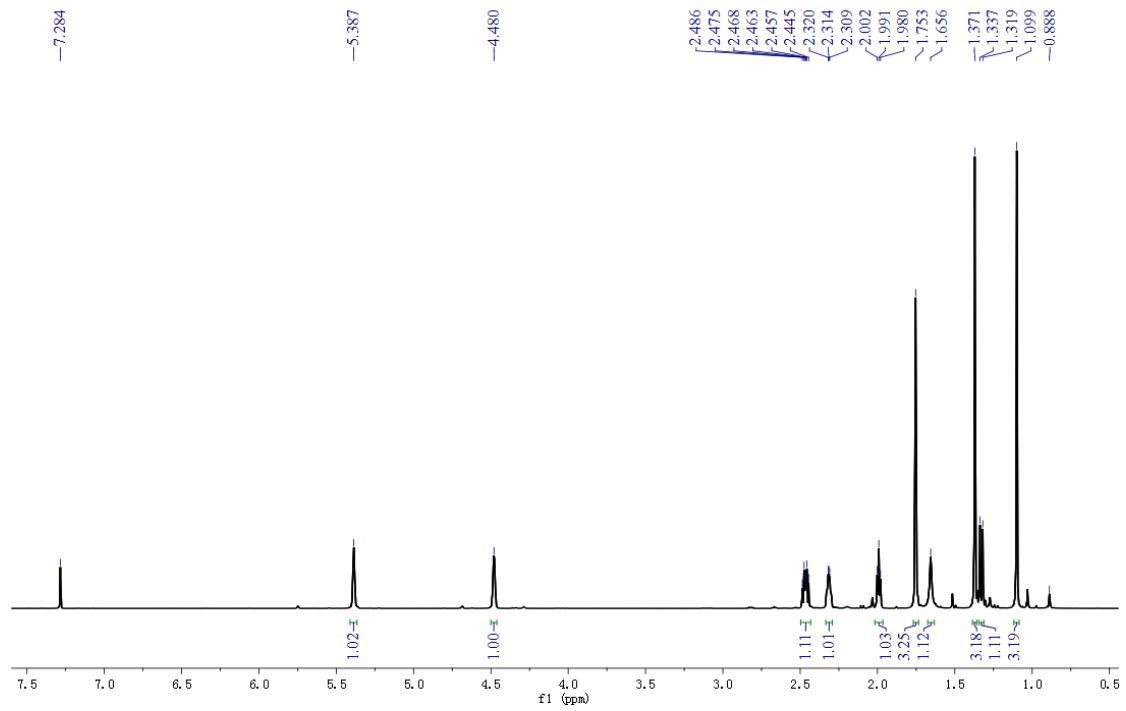


Fig. 4 The <sup>1</sup>H and <sup>13</sup>C-NMR spectra of camphor

Bruker Avance DRX 500, A&T Center BNU  
Sample: Verbenol Solvent: CDCl<sub>3</sub>  
Spectrum: 1H



Bruker Avance DRX 500, A&T Center BNU  
Sample: Verbenol Solvent: CDCl<sub>3</sub>  
Spectrum: 13C

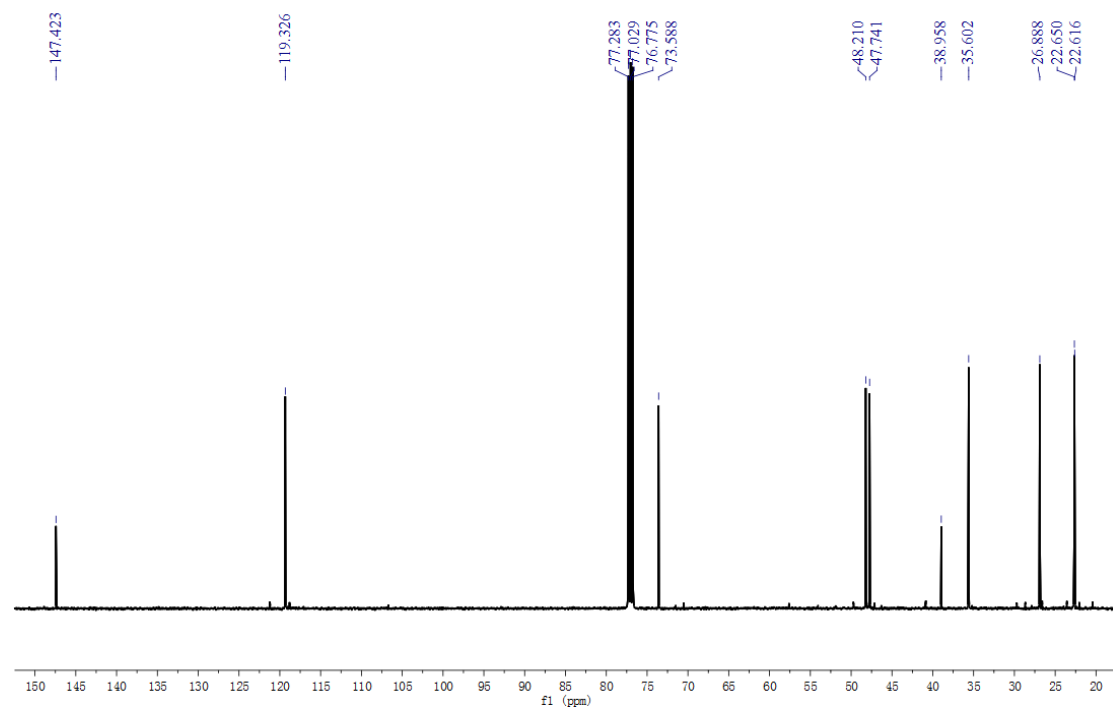


Fig. 5 The <sup>1</sup>H and <sup>13</sup>C-NMR spectra of verbenol