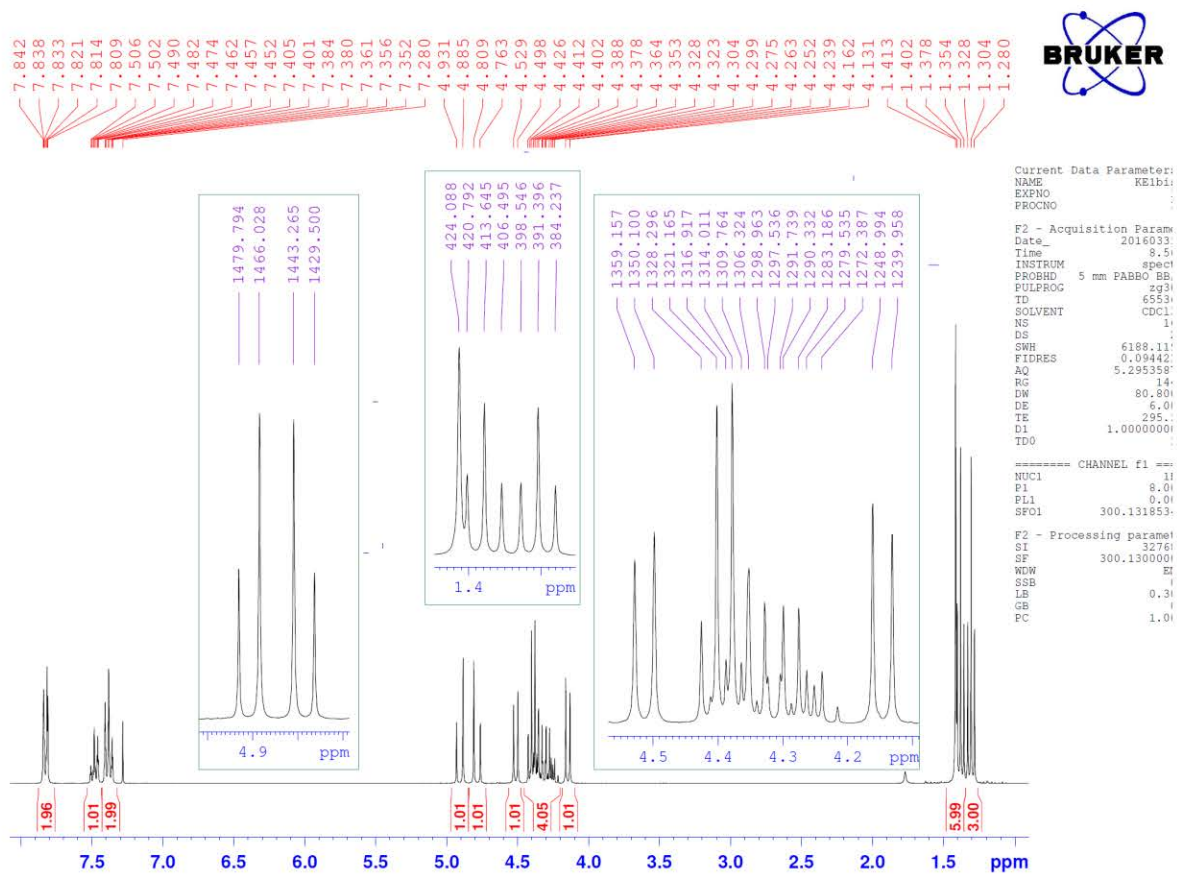
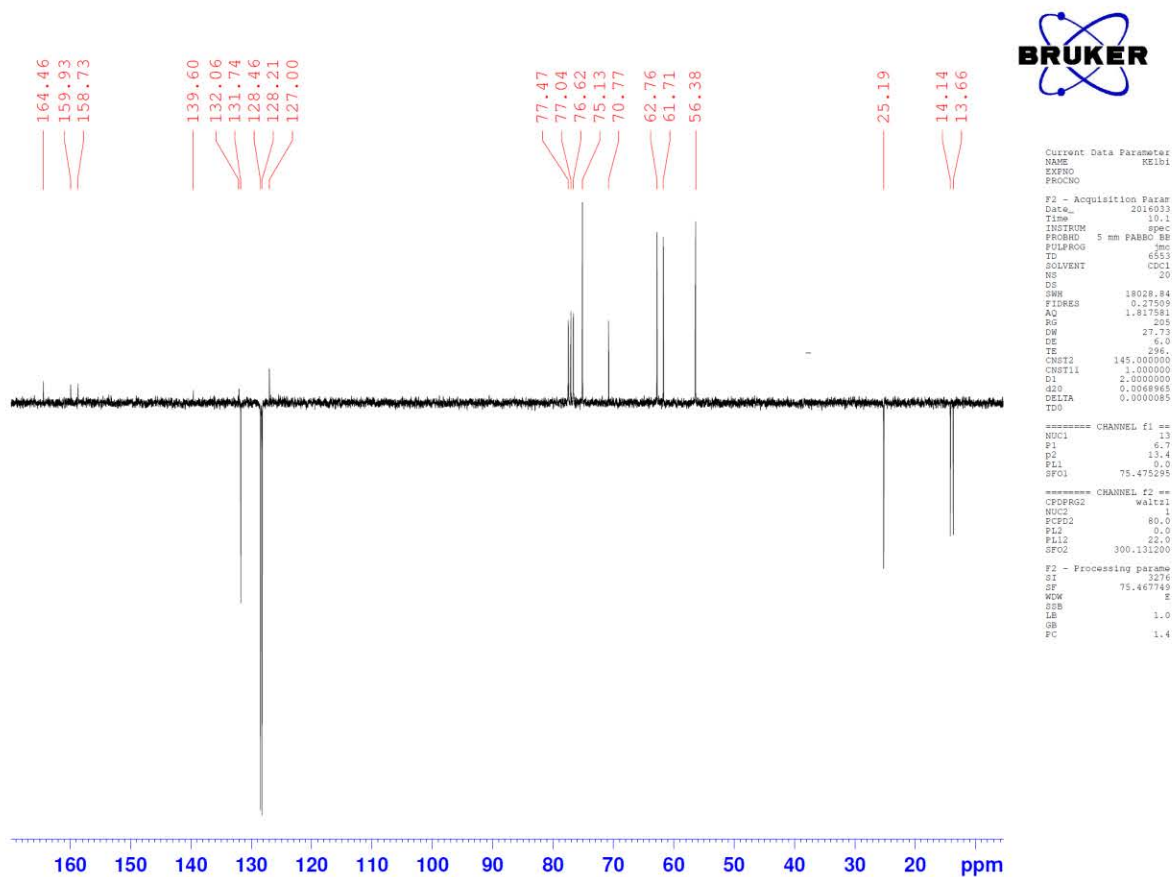


Supplementary Files

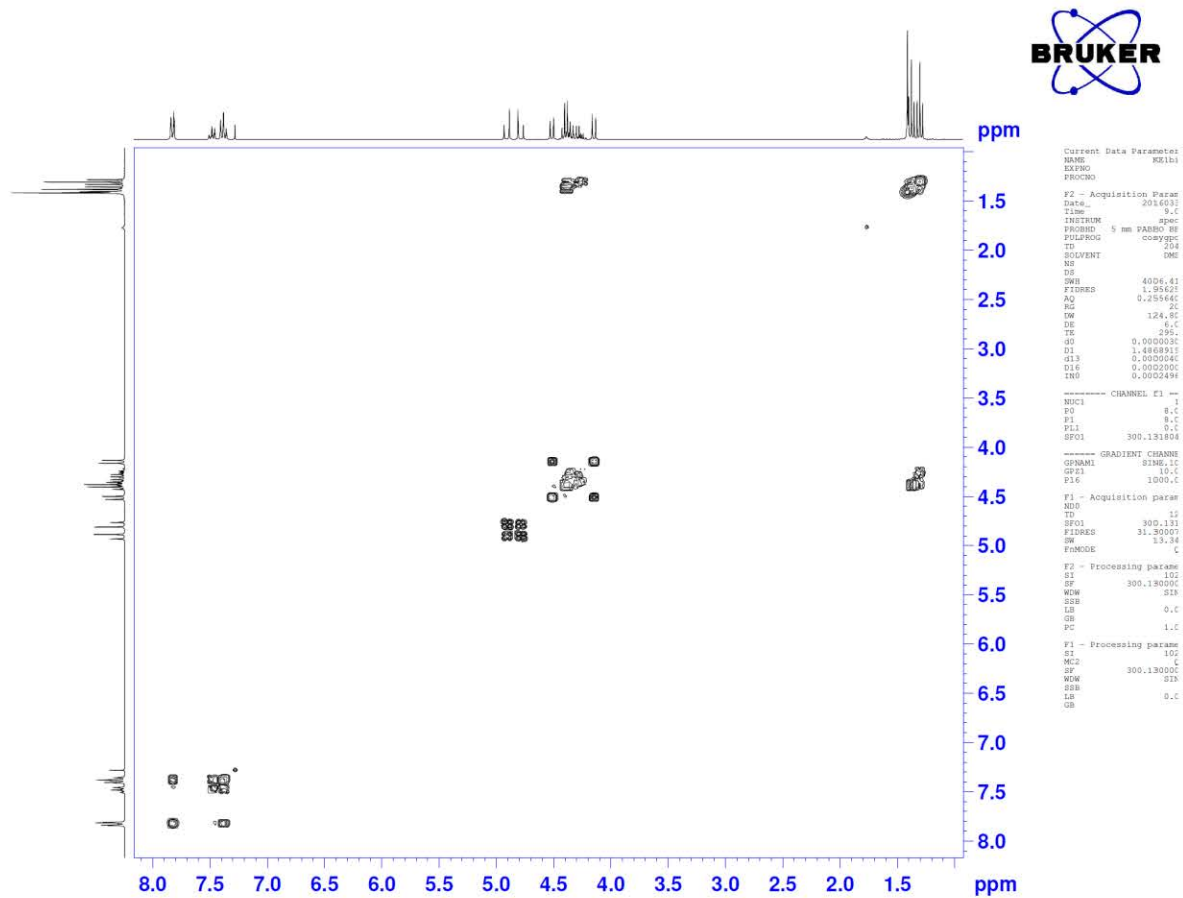
Supplementary spectrum 1. ¹H spectrum (in CDCl₃) of compound 2.



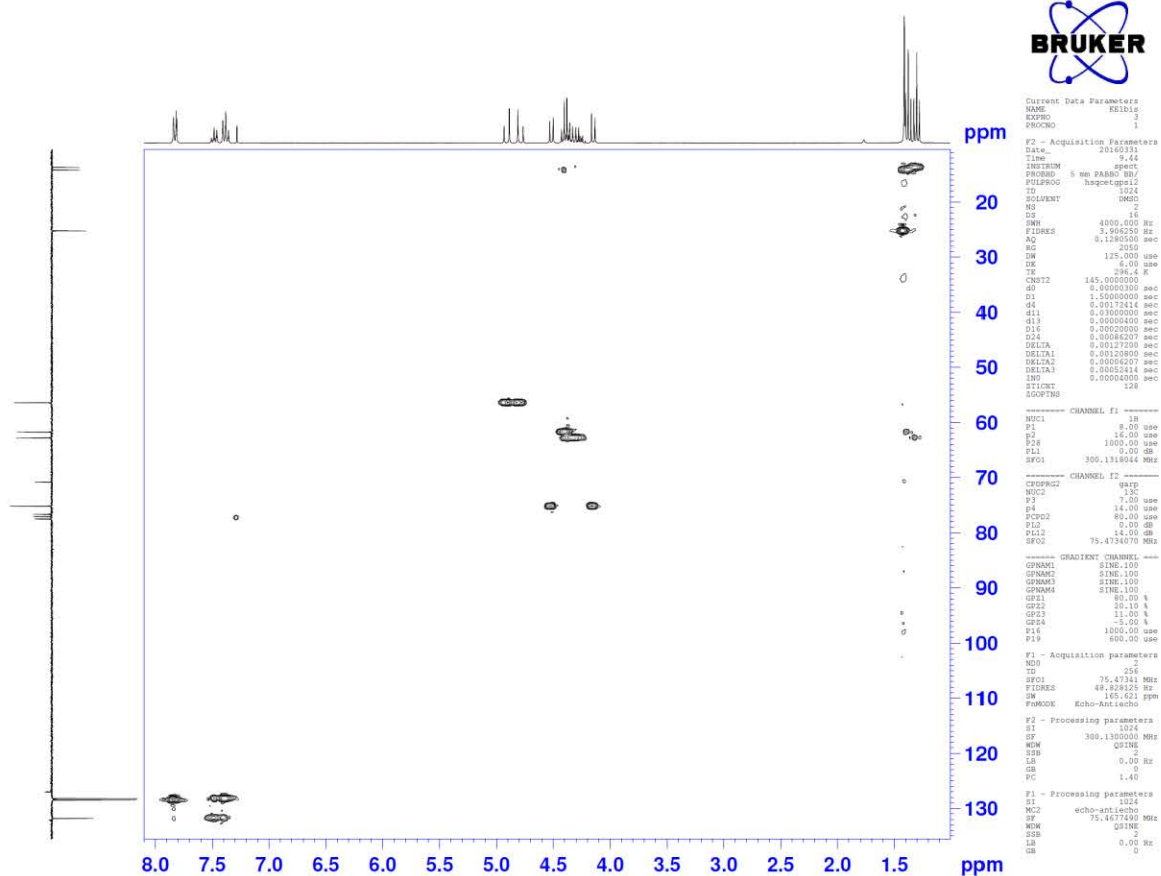
Supplementary spectrum 2. ¹³C spectrum (in CDCl₃) of compound 2.



Supplementary spectrum 3. Homonuclear ^1H - ^1H 2D spectrum (in CDCl_3) of compound 2.



Supplementary spectrum 4. Heteronuclear ^1H - ^{13}C 2D spectrum (in CDCl_3) of compound 2.



Supplementary spectrum 5. Mass spectrum of compound 2.

Spectre de masse SB_5

5 #4 RT: 0.08 AV: 1 NL: 1.04E8
T: + c ESI Full ms [150.00-2000.00]

