

Supplementary data

Suppl. Table 1 The list of apparatus.

Suppl. Fig. 1 Effect of the type of extraction solvent on recoveries. The volume of extraction-solvent, 6 mL; ultrasonic extraction time, 5 min; the type of adsorbent, diatomaceous earth + PSA (1:1); the volume of adsorbent, 80 mg.

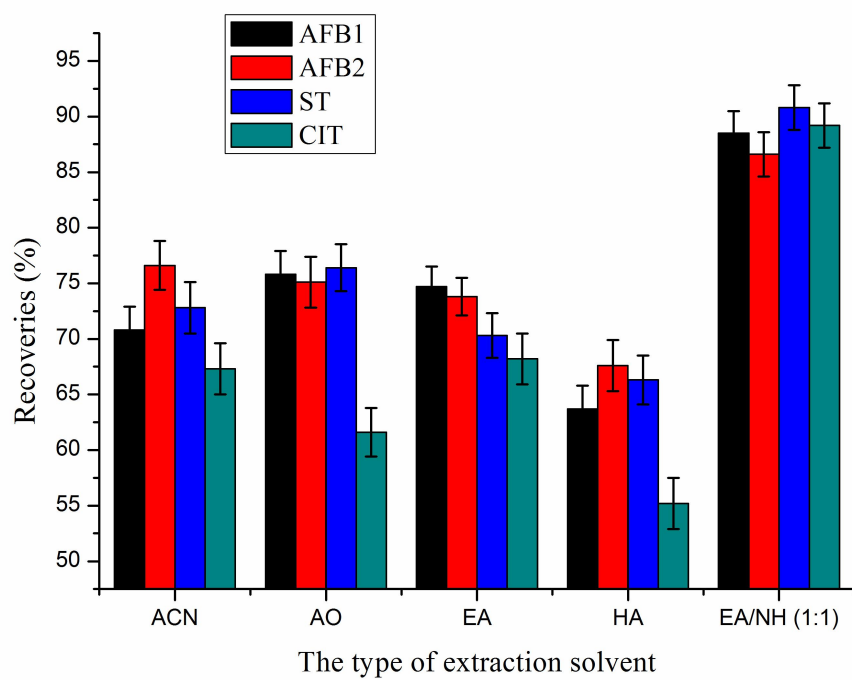
Suppl. Fig. 2 Effect of ultrasonic extraction time on the recoveries of the analytes. The type of extraction solvent, ethyl acetate and n-hexane (EA / HA, V: V = 1: 1) ; the volume of extraction-solvent, 6 mL; the type of adsorbent, diatomaceous earth + PSA (1:1); the volume of adsorbent, 80 mg.

Suppl. Fig. 3 Effect of type of adsorbent on recoveries of analytes. The type of extraction solvent, ethyl acetate and n-hexane (EA / HA, V: V = 1: 1) ; the volume of extraction solvent, 6 mL; ultrasonic extraction time, 5 min; the volume of adsorbent, 80 mg.

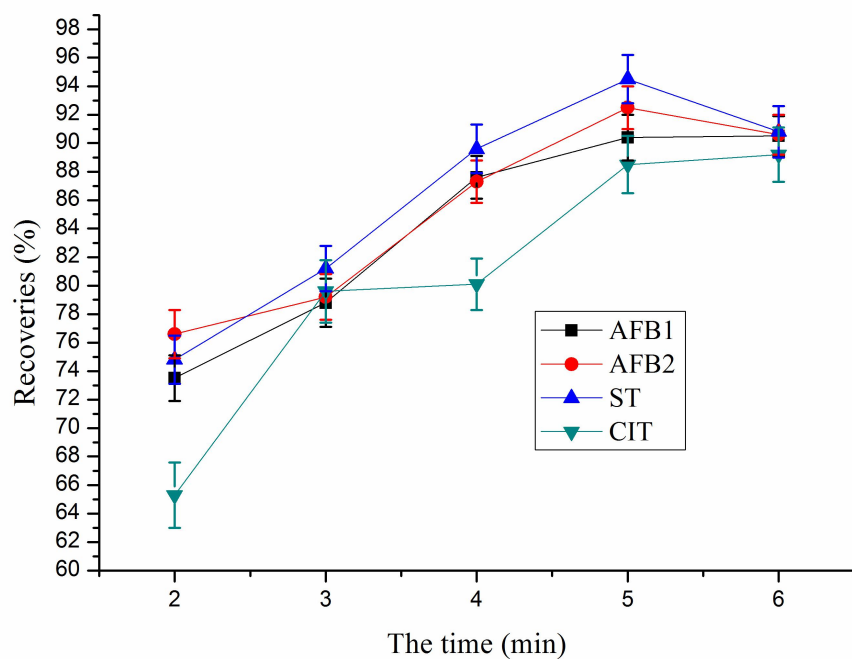
Suppl. Fig. 4 Effect of amount of adsorbent on the recoveries of the analytes. The type of extraction-solvent, ethyl acetate and n-hexane (EA / HA, V: V = 1: 1) ; the volume of extraction-solvent, 6 mL; ultrasonic extraction time, 5 min; the type of adsorbent, diatomaceous earth + PSA (1:1).

Suppl. Table 1 The list of apparatus

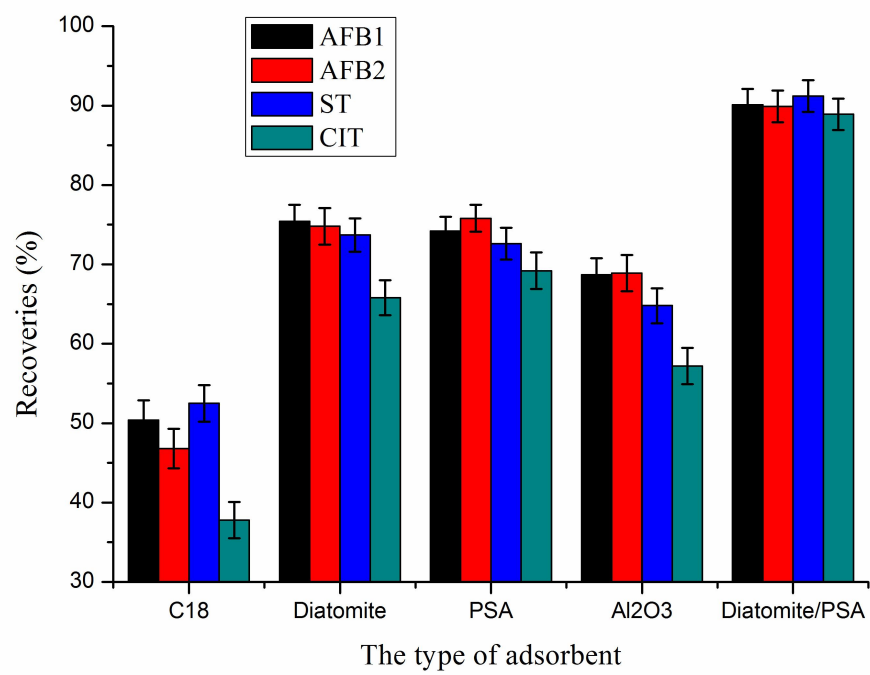
Apparatus name	Model	Manufacturer
High performance liquid chromatograph--Diode Array Detector	1260	Agilent Technologies Inc., USA
High-speed refrigerated centrifuge	Allegra 64R	Beckman, USA
Philips mill	HR-2870	Philips, Zhuhai, China
vacuum rotatory evaporator	RE-52AA	Yarong, Shanghai, China
water purification system	Milli-Q	Millipore Corp., USA
ultrasonic water bath cleaner	KQ2200E	Kunshan Instrument Equipment Co., Ltd., Kunshan, Chin
Eclipse XDB-C18 column	150 mm×4.6 mm i.d., 3.5 μm	Agilent, USA



Suppl. Fig. 1 Effect of the type of extract solvent on on the recoveries of the analytes



Suppl. Fig. 2 Effect of ultrasonic extraction time on the recoveries of the analytes



46

47

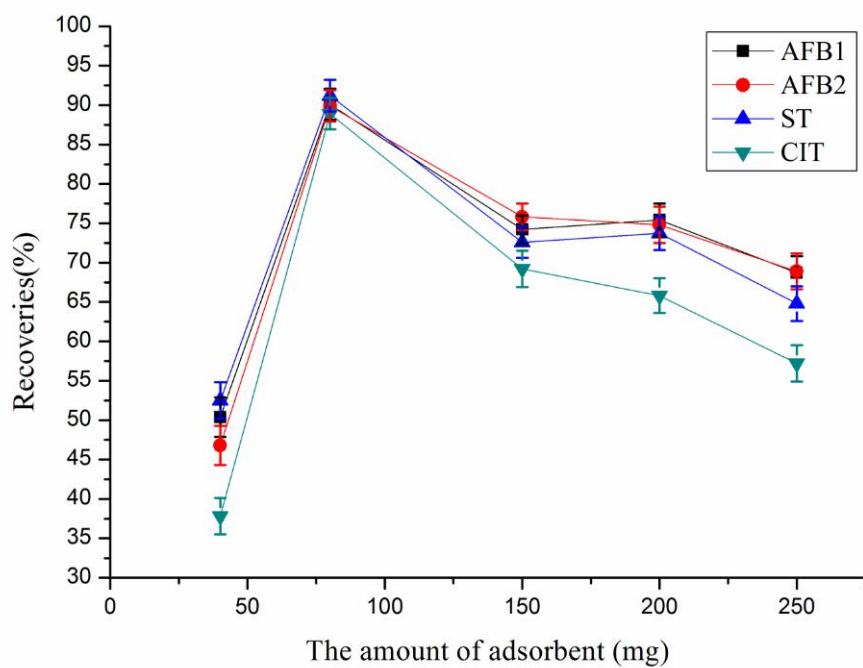
Suppl. Fig. 3 Effect of type of adsorbent on recoveries of analytes

48

49

50

51



Suppl. Fig. 4 Effect of ~~volume~~amount of adsorbent on the recoveries of the analytes