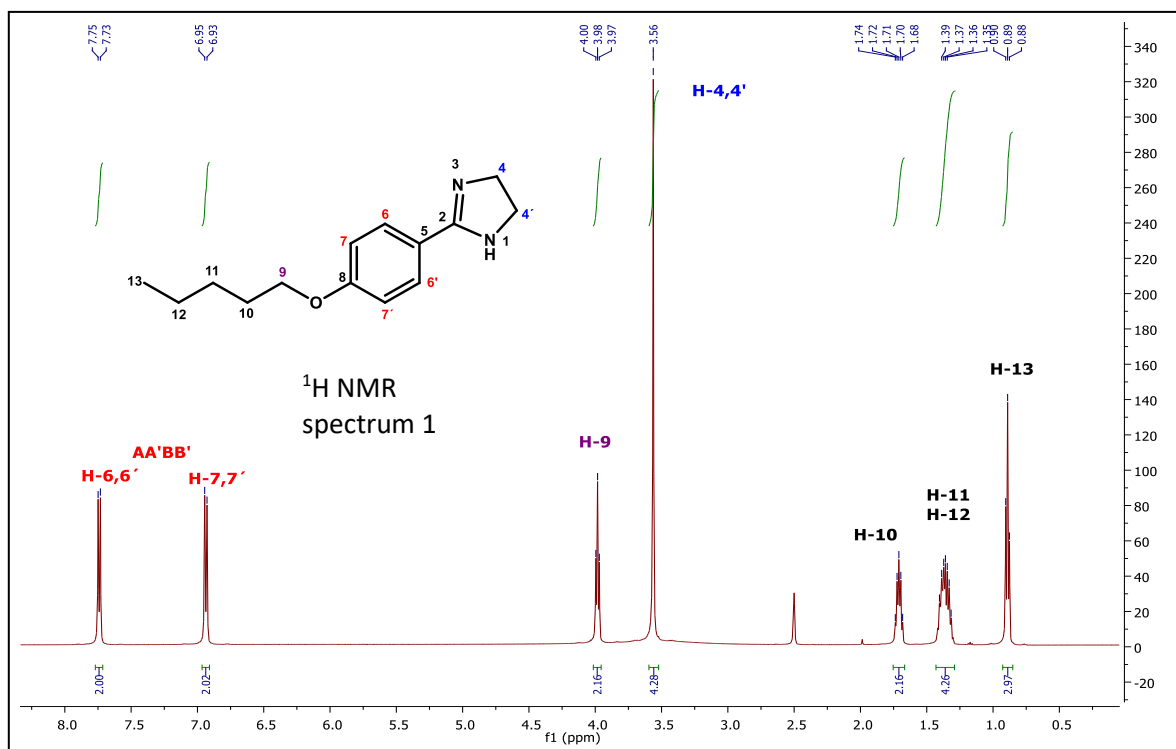
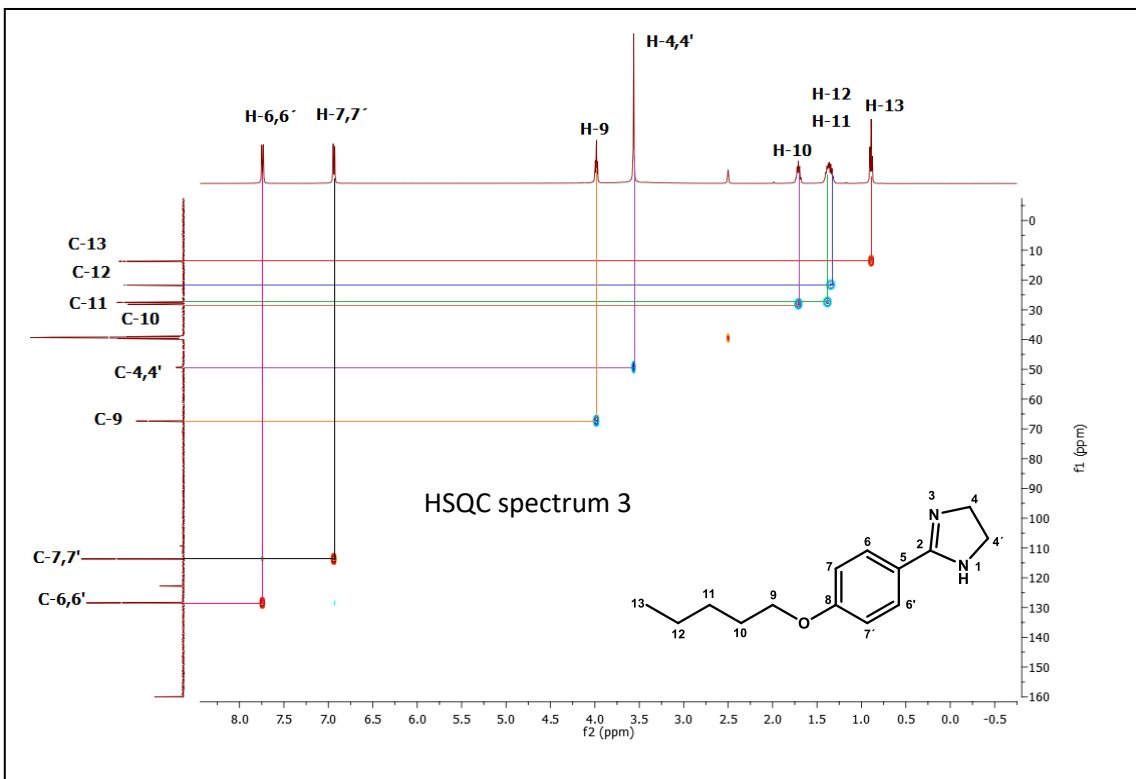
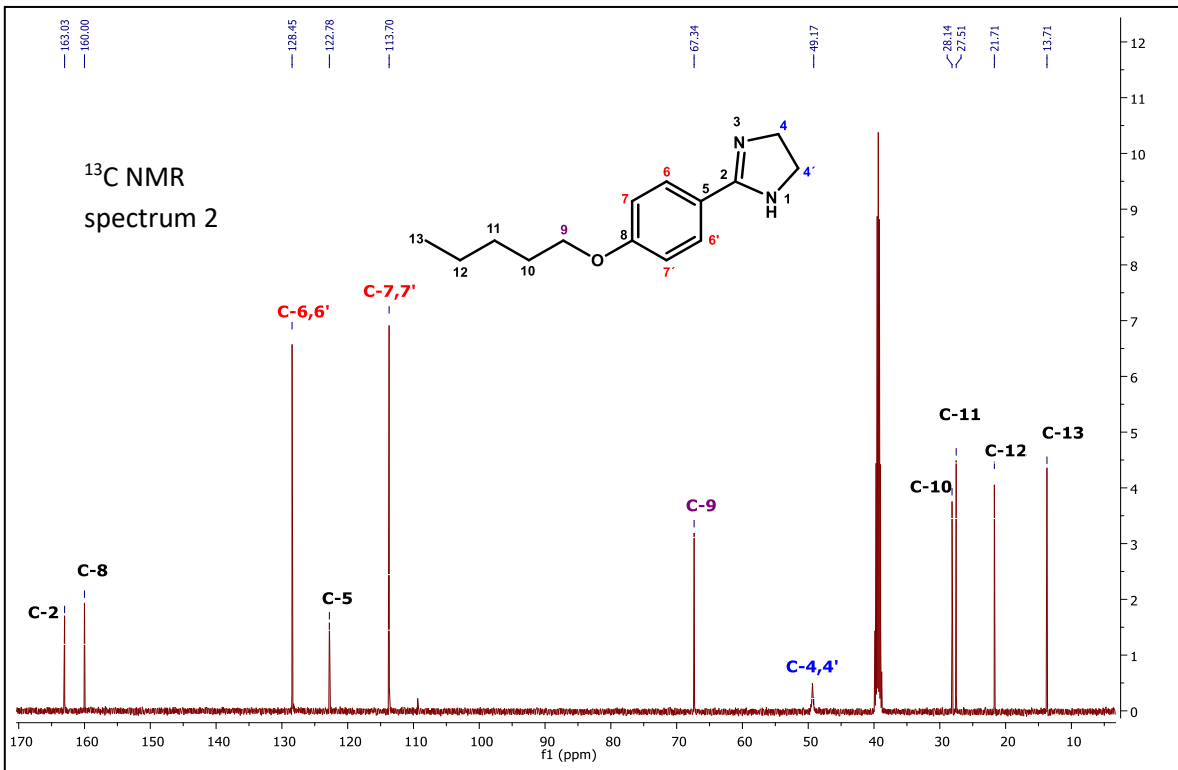
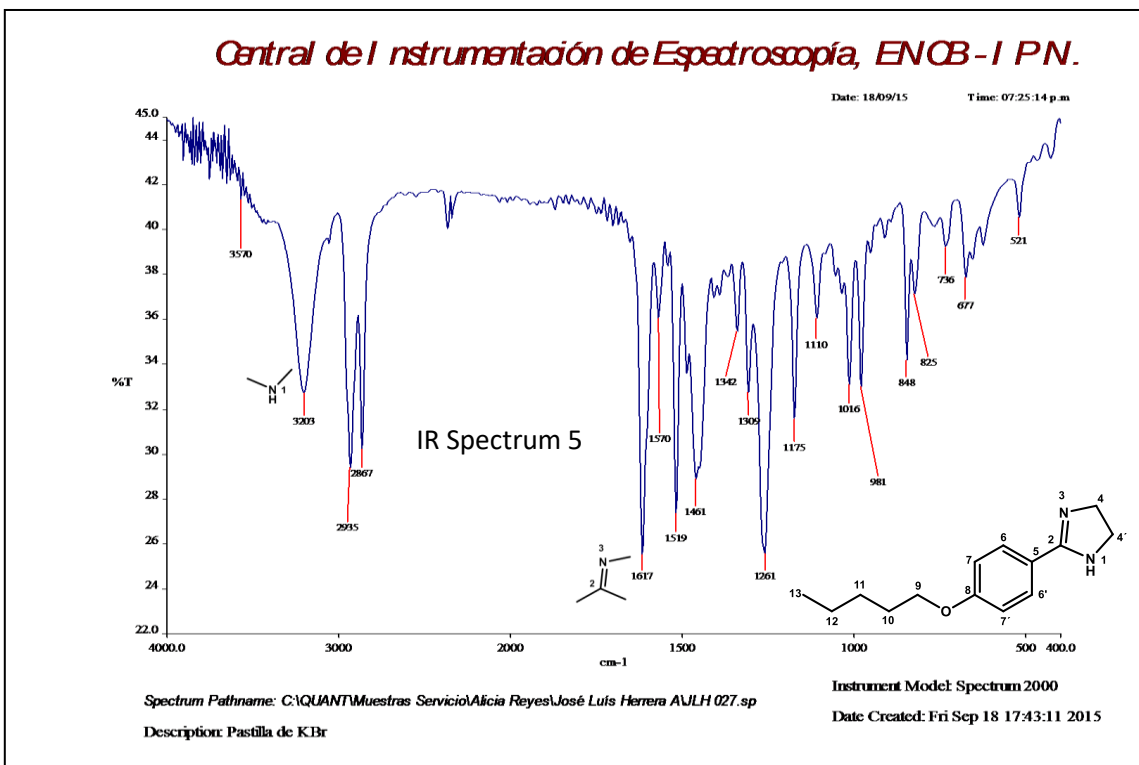
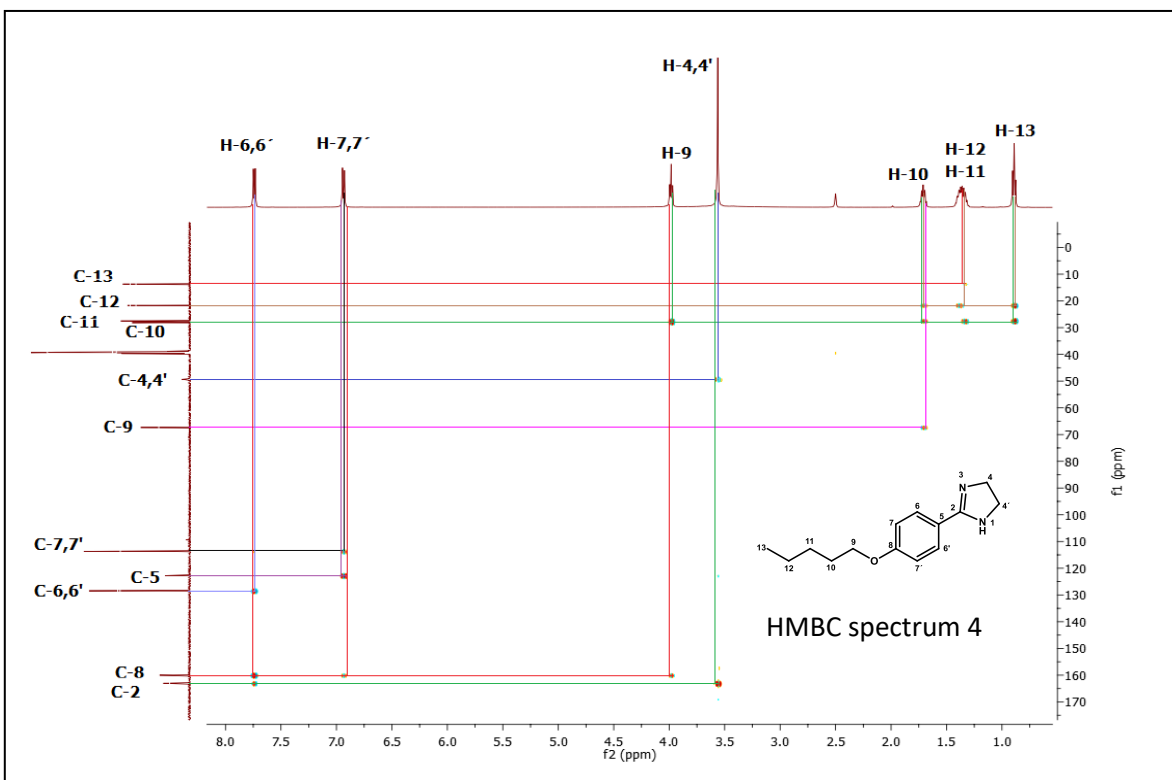


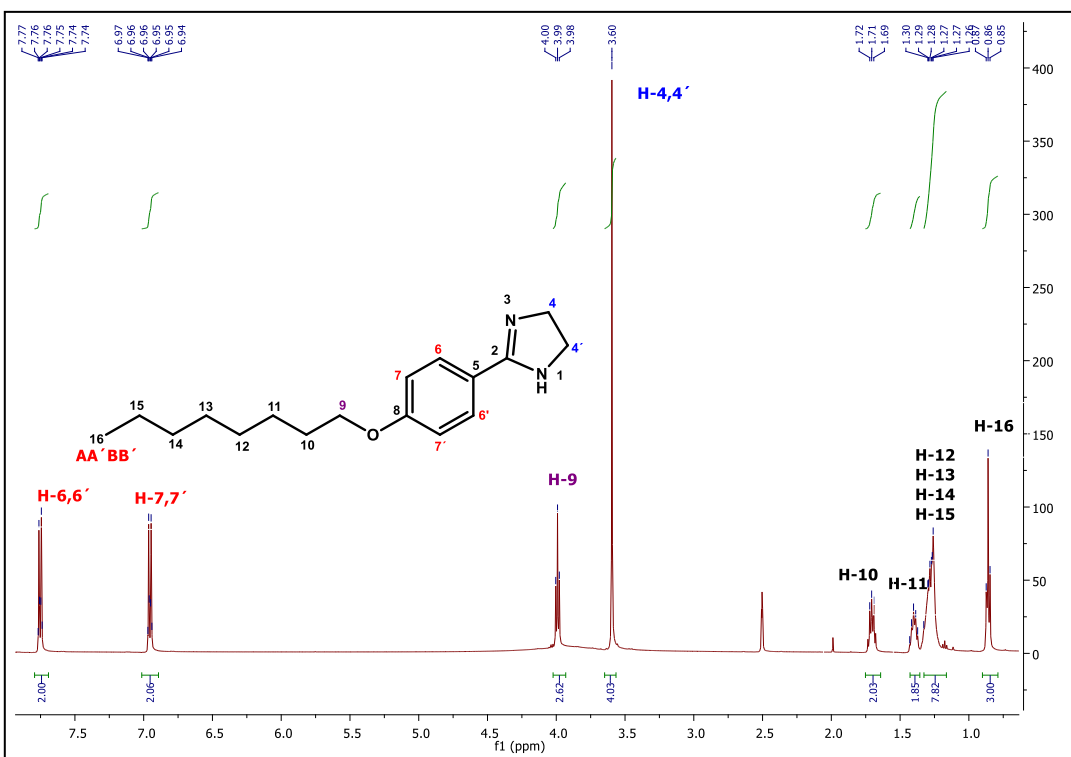
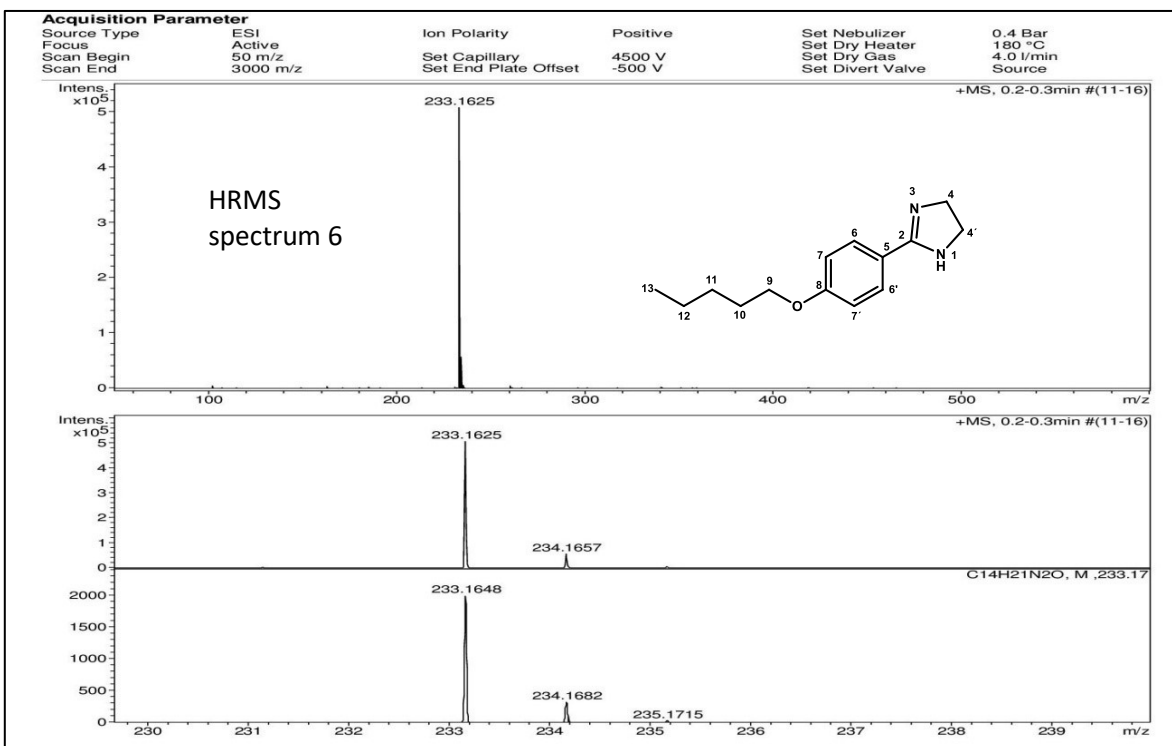
# SUPPLEMENTARY MATERIAL

## Selected Spectra

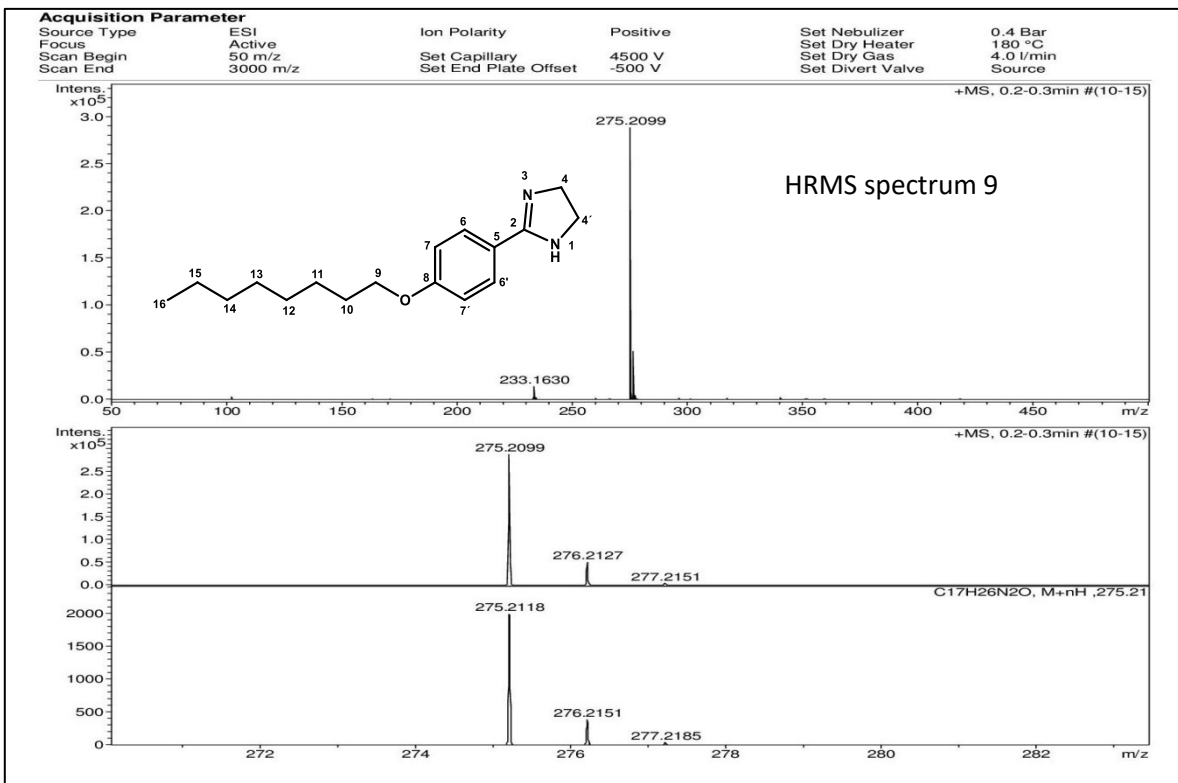
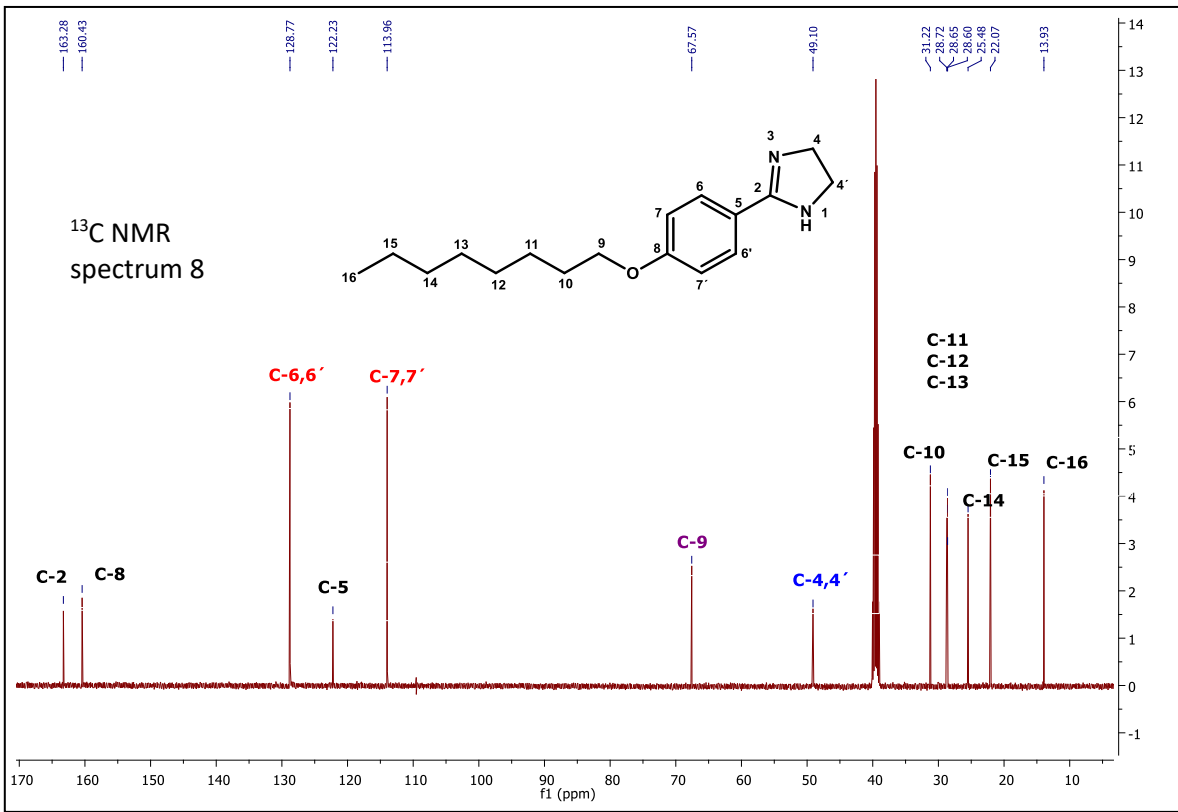


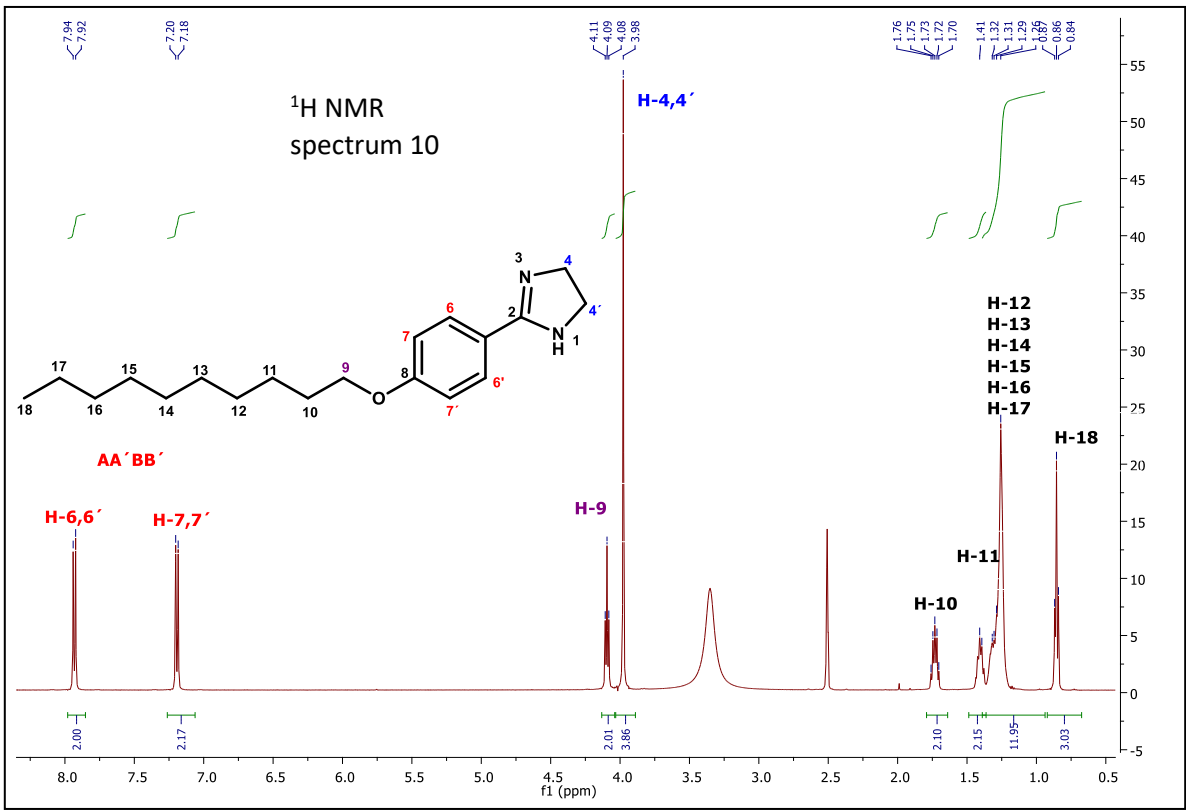


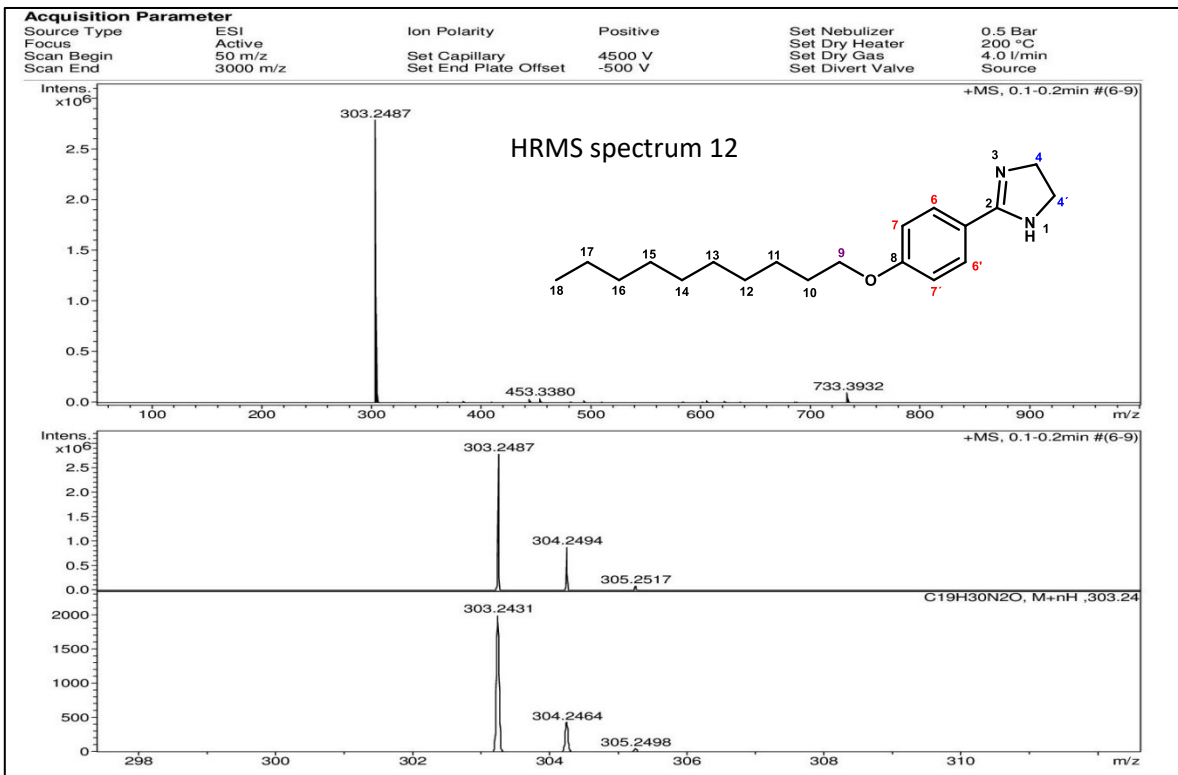
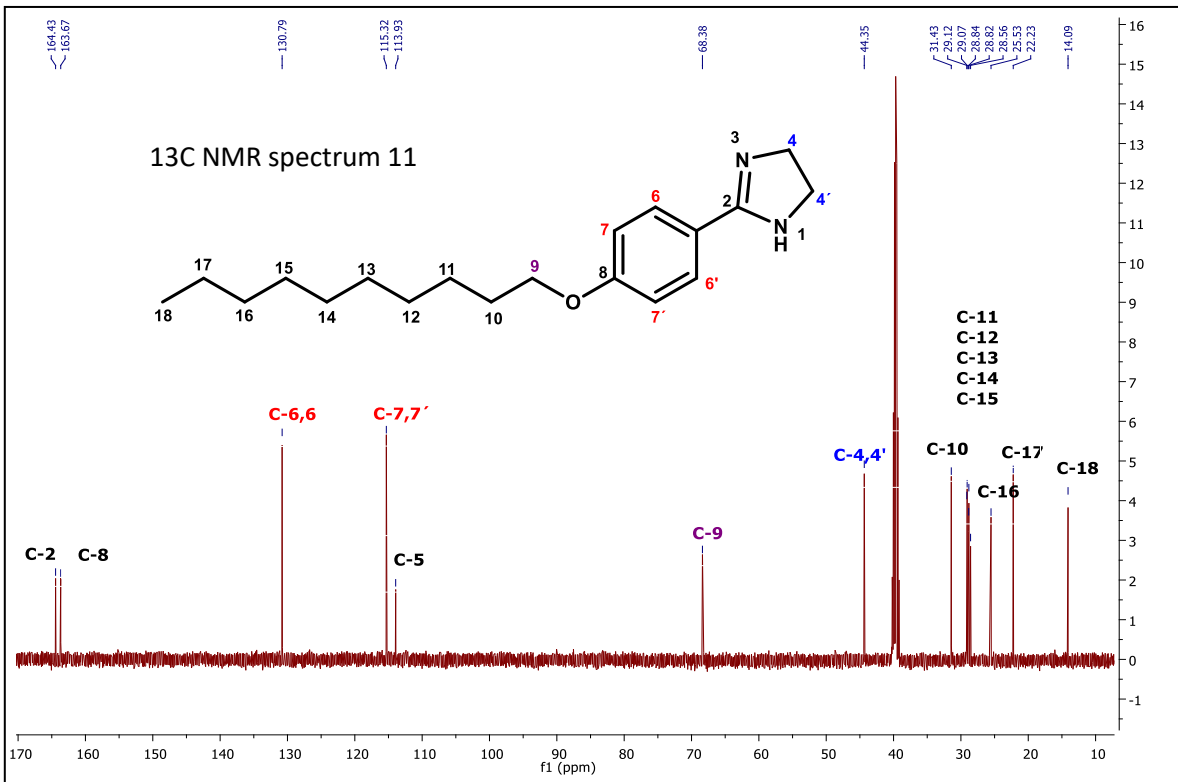


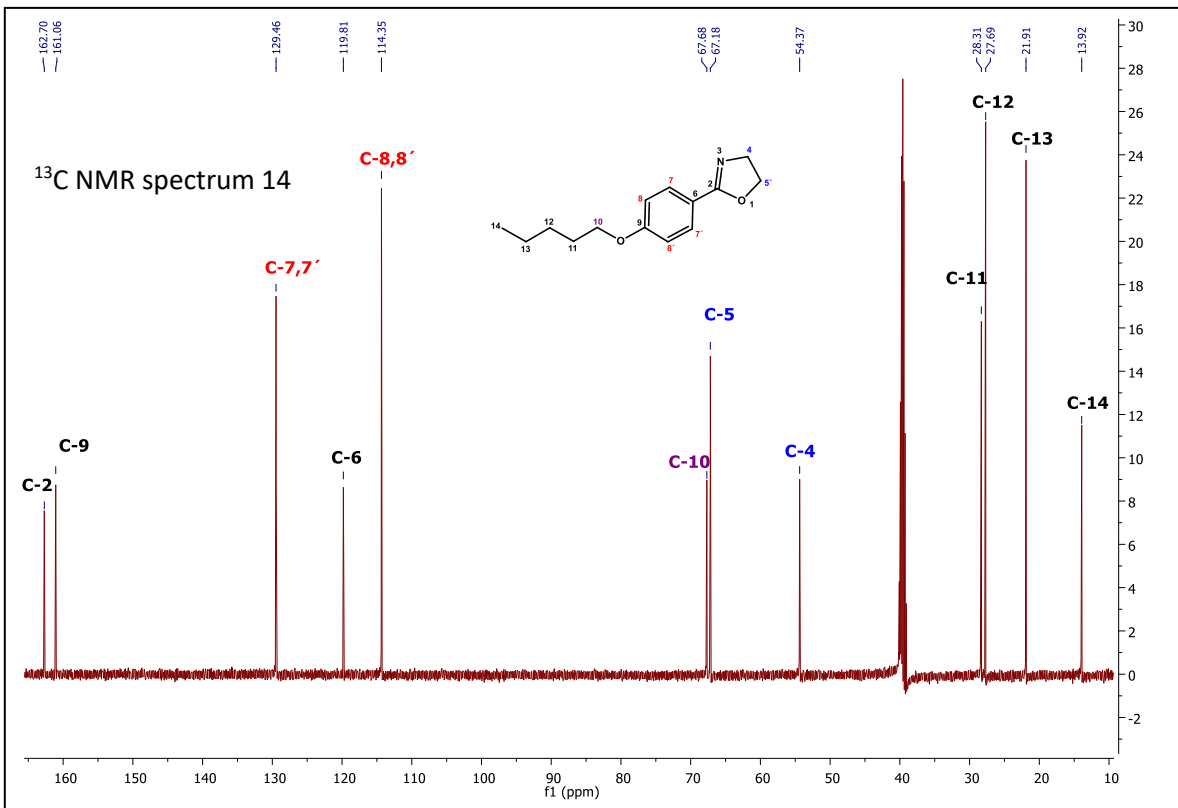
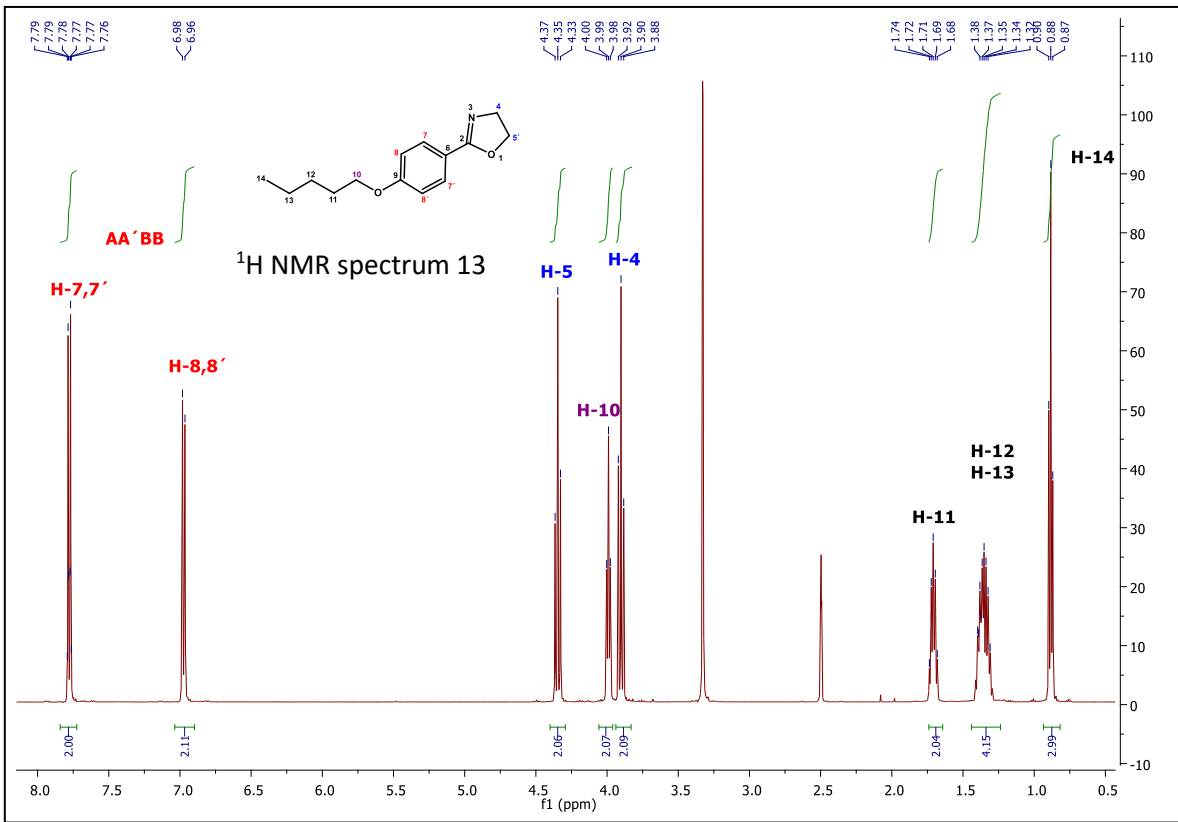


1H NMR spectrum 7







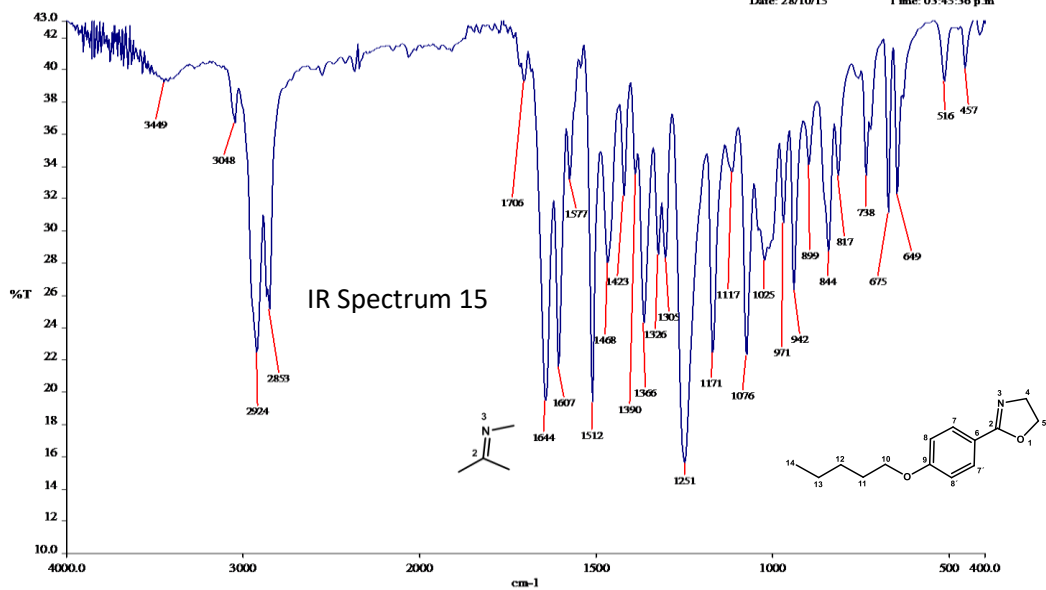




Central de Instrumentación de Espectroscopía, ENCB-IPN.

Date: 28/10/15

Time: 03:45:36 p.m

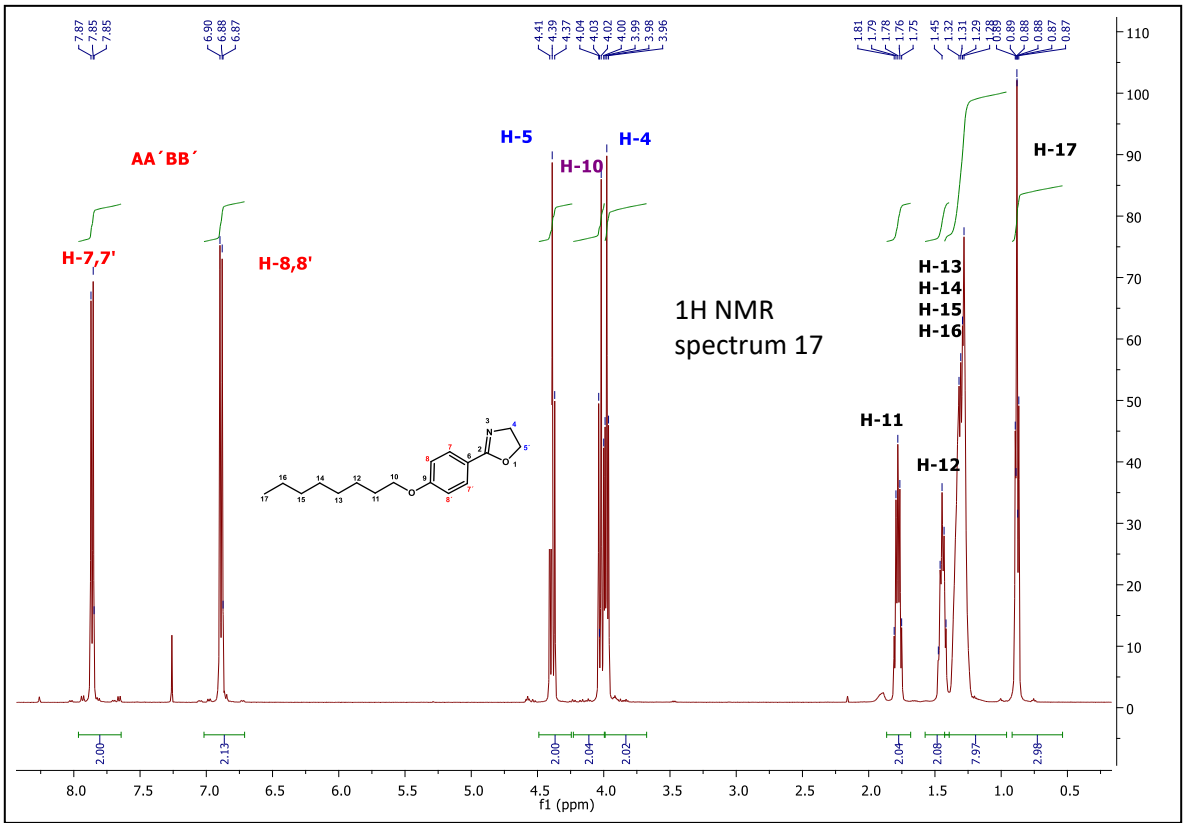
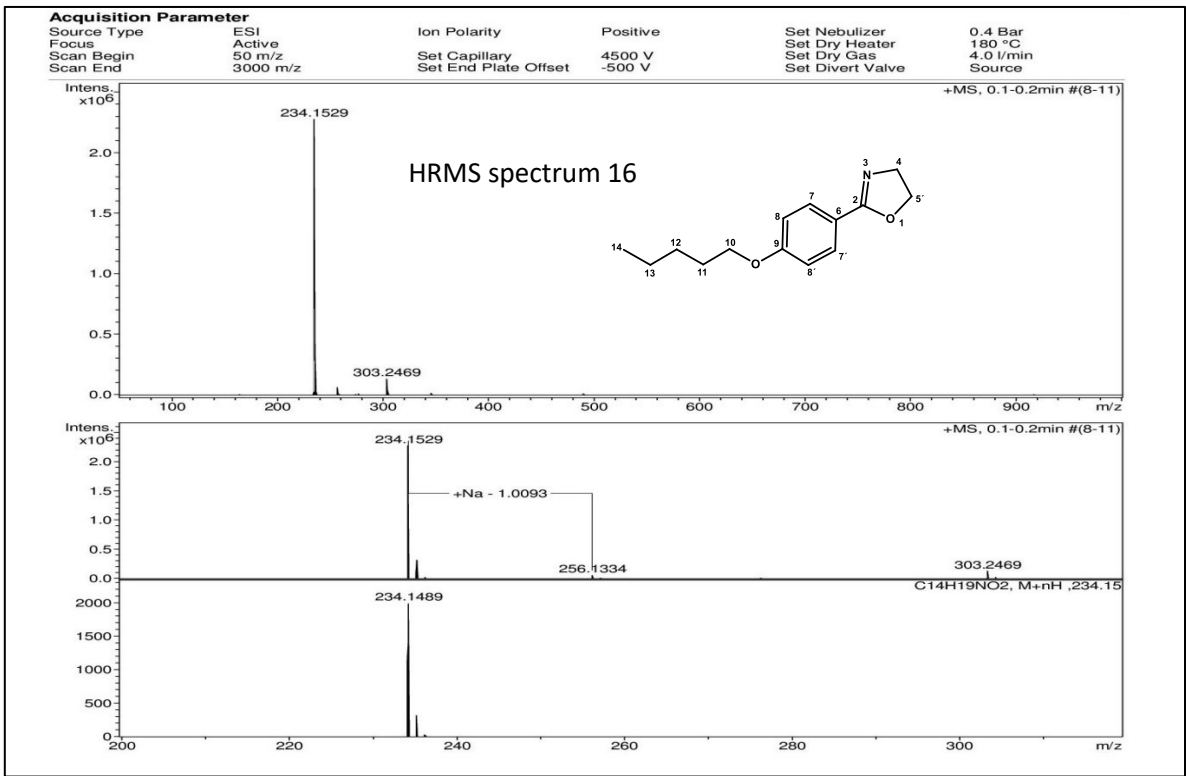


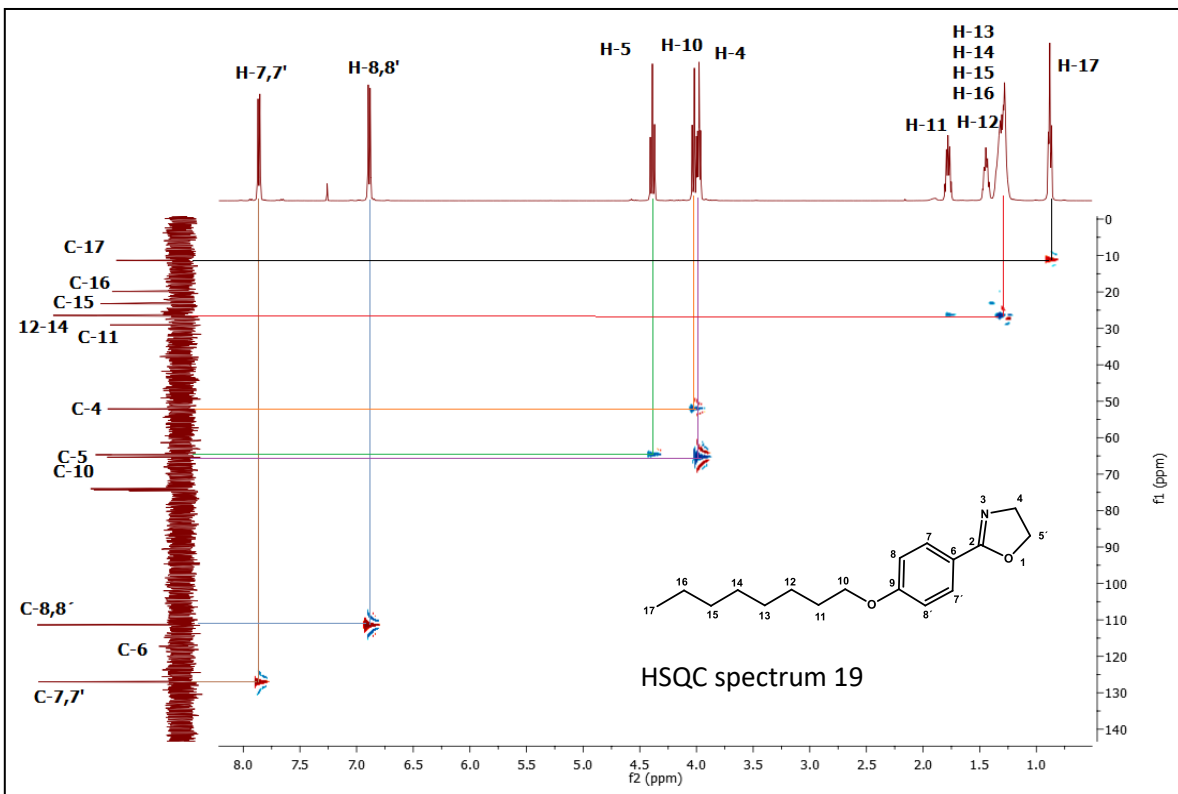
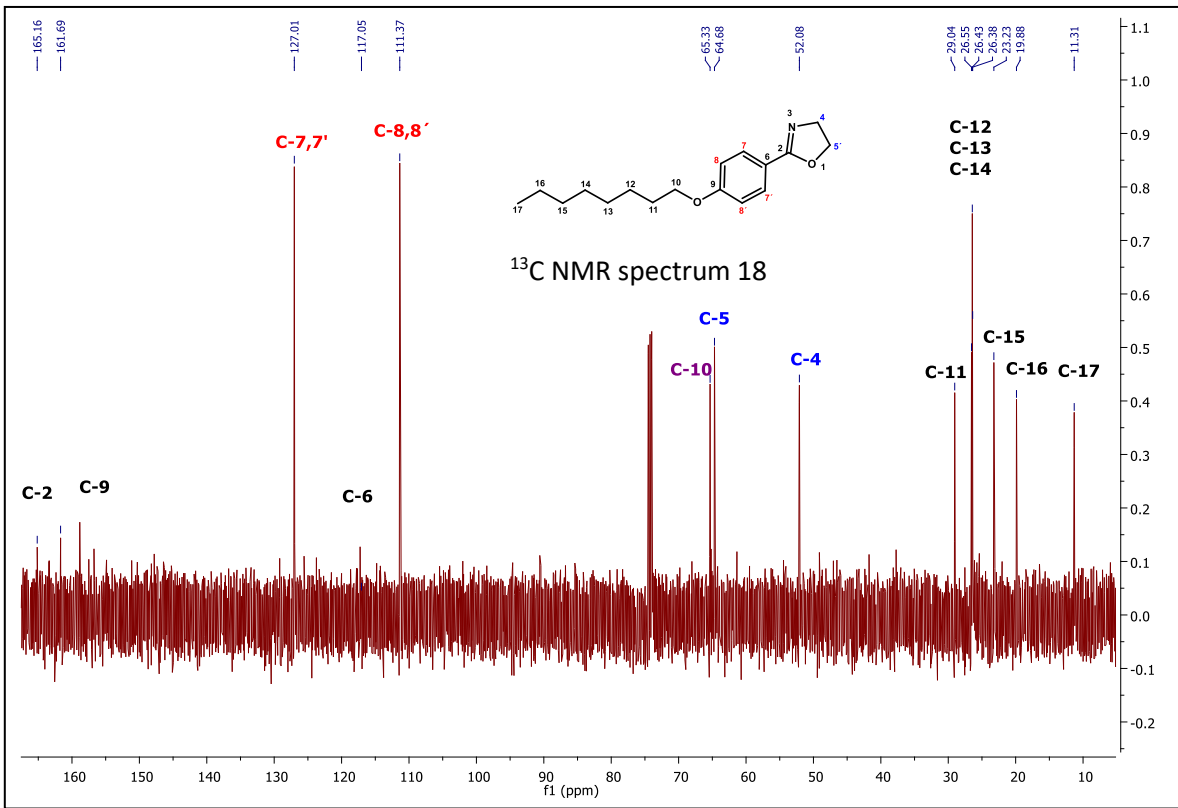
Spectrum Pathname: C:\QUANT\Muestras Servicio\Alicia Reyes\JLH 067.sp

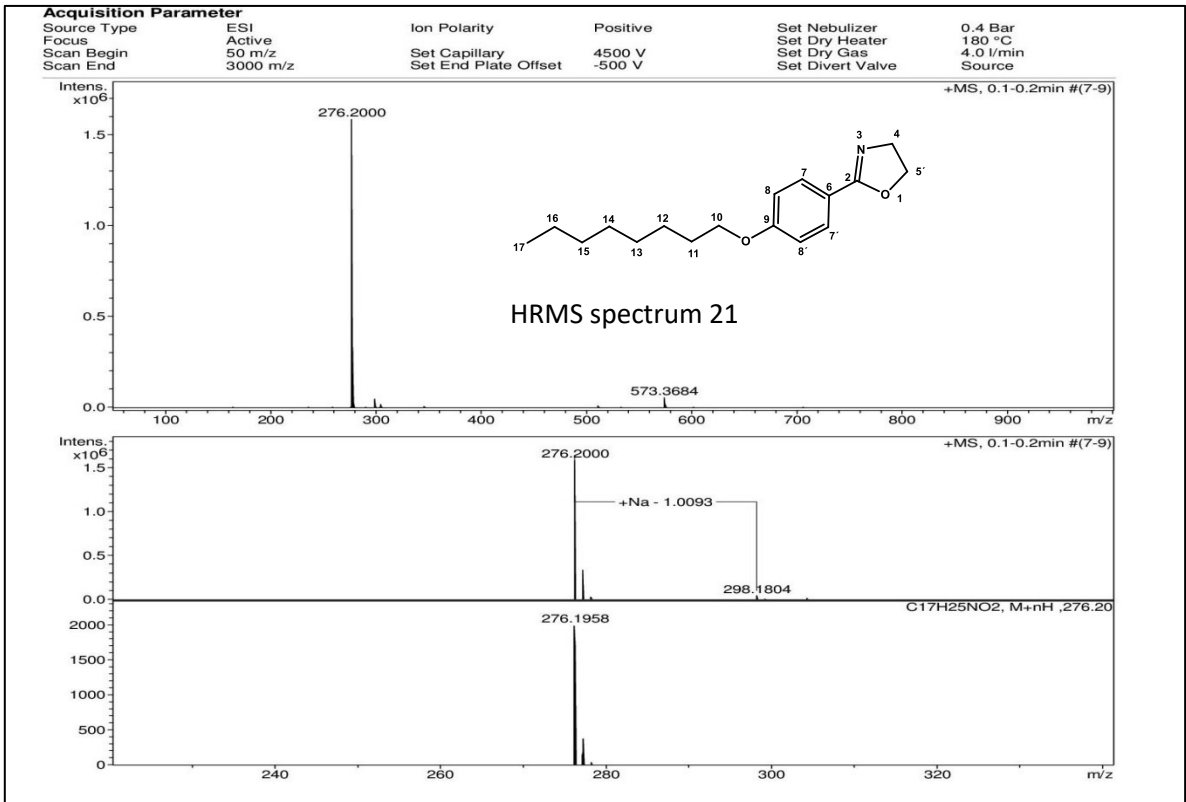
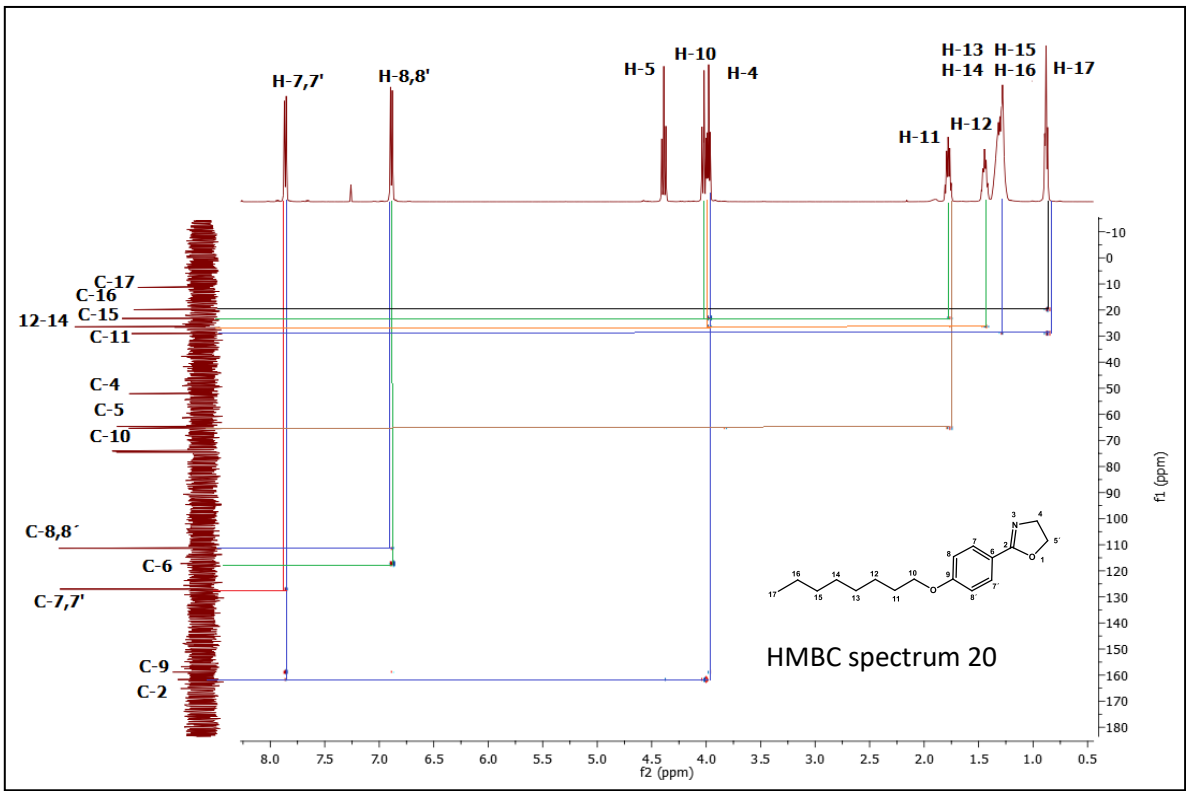
Description: Pastilla de KBr

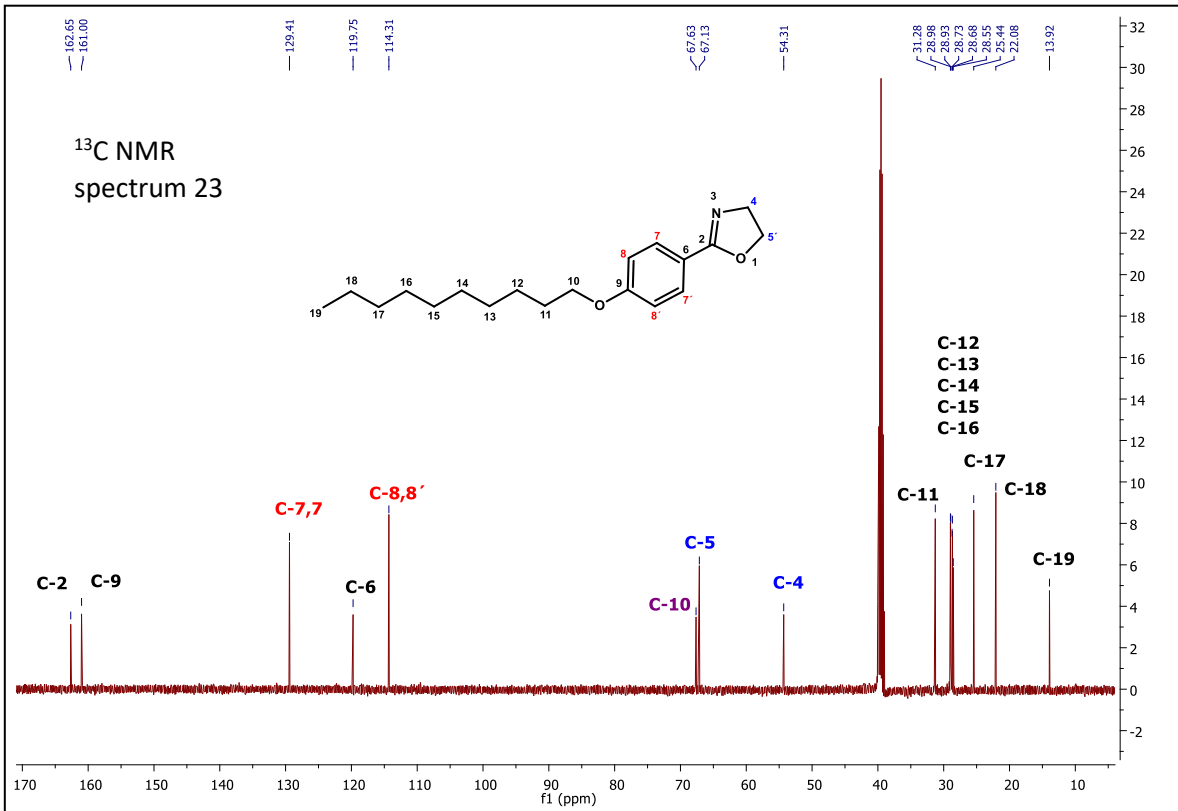
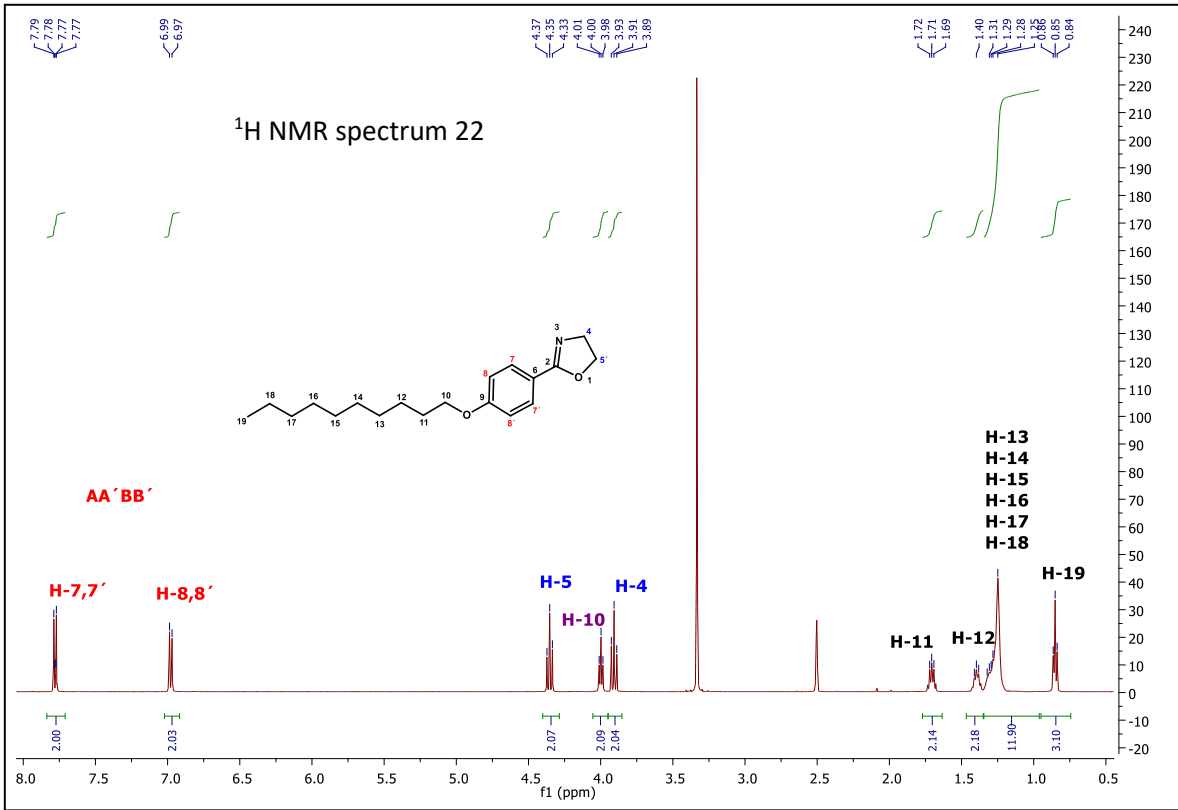
Instrument Model: Spectrum 2000

Date Created: Wed Oct 28 15:39:56 2015



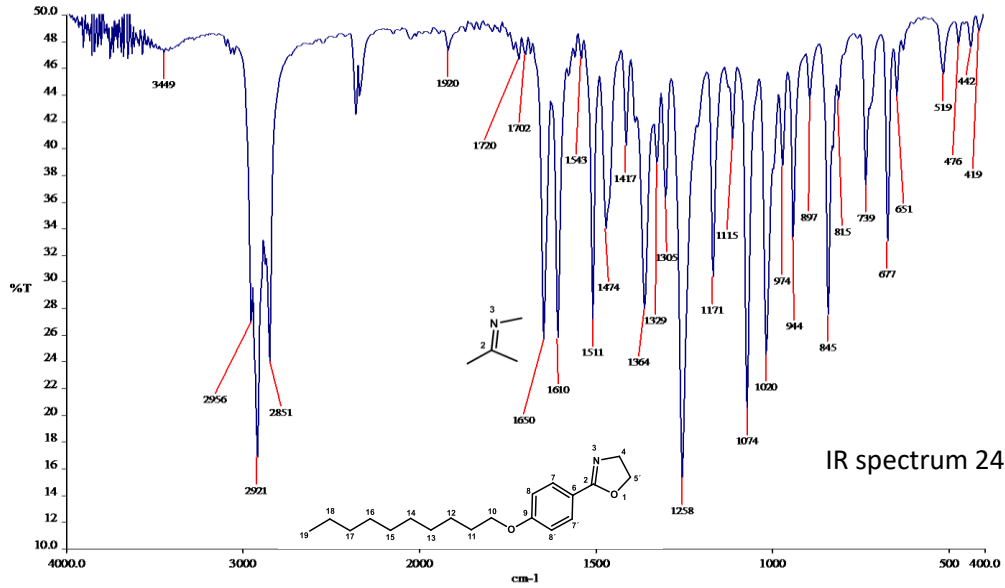






Central de Instrumentación de Espectroscopía, ENCB-IPN.

Date: 30/10/15 Time: 11:51:08 a.m



IR spectrum 24

Spectrum Pathname: C:\QUANT\Muestras Servicio\Alicia Reyes\JLH 077.sp

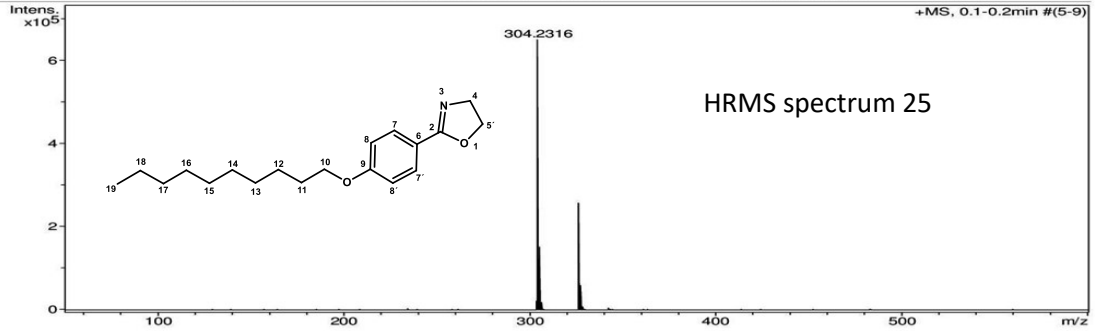
Instrument Model: Spectrum 2000

Description: Pastilla de KBr

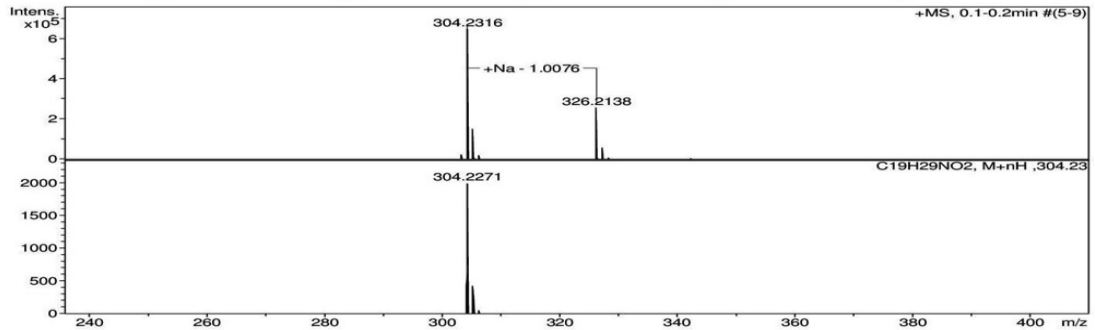
Date Created: Fri Oct 30 11:44:37 2015

Acquisition Parameter

Source Type	ESI	Ion Polarity	Positive	Set Nebulizer	0.4 Bar
Focus	Active	Set Capillary	4500 V	Set Dry Heater	180 °C
Scan Begin	50 m/z	Set End Plate Offset	-500 V	Set Dry Gas	4.0 l/min
Scan End	3000 m/z			Set Divert Valve	Source



HRMS spectrum 25



C<sub>19</sub>H<sub>29</sub>NO<sub>2</sub>, M+nH, 304.23