

Supplementary materials: Kong et al.

Figure legends

Suppl.Fig.1 FLZ decreased PDX-1 cytosolic localization.

INS-1E were cultured at G5.5 or G30 in the presence or absence of 10 μ M FLZ for 3 days. Then cytosolic and nuclear protein were extracted and subjected to western blot analysis. Values represent mean \pm SEM (n=3). **, p<0.01 vs. cells at G5.5; #, p<0.05 vs. cells at G30 without FLZ.

Suppl.Fig.2 FLZ increased FOXO1 cytosolic localization.

INS-1E were cultured at G5.5 or G30 with or without 10 μ M FLZ for 3 days. Then cytosolic and nuclear protein were extracted and subjected to western blot analysis. Values represent mean \pm SEM (n=3). **, p<0.01 vs. cells cultured in G5.5; #, p<0.05 vs. cells cultured in G30 without FLZ .

Suppl.Fig.3 MK-2206 inhibited PDX-1 expression and nuclear localization induced by FLZ.

(A) INS-1E were cultured at G5.5 or G30 with or without FLZ or MK-2206 for 3 days, whole cell proteins were extracted and were subjected to western blot analysis. Values represent mean \pm SEM (n=3). **, p<0.01 vs. cells at G5.5; ###, p<0.01 vs. cells at G30 without FLZ; &, p<0.05 vs. cells at G30 with FLZ .

(B) and (C) INS-1E were cultured at G5.5 or G30 with or without FLZ or MK-2206 for 3 days. Cytosolic and nuclear protein were extracted and subjected to western blot

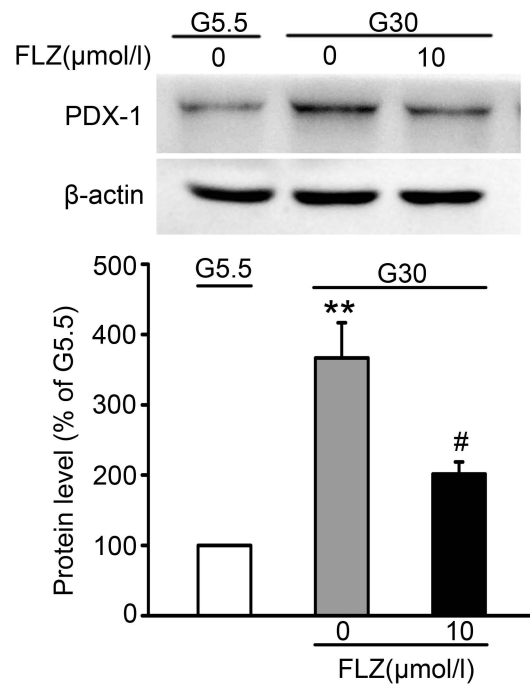
analysis. Values represent mean \pm SEM (n=3). **, p<0.01 vs. cells at G5.5; #, p<0.05, ##, p<0.01 vs. cells at G30 without FLZ; &, p<0.05 vs. cells at G30 with FLZ.

Suppl.Fig.4 Effect of MK-2206 on cell viability, insulin content and secretion in INS-1E cells at G30.

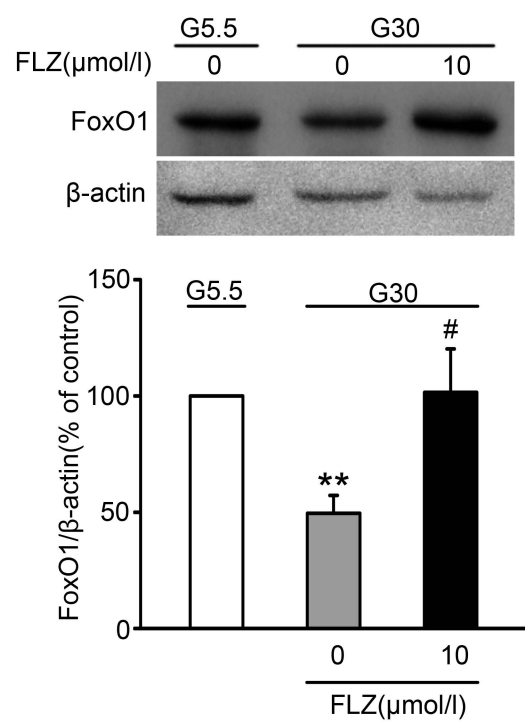
(A) INS-1E cells were cultured at G30 with or without 50 nM MK-2206 for 4 days. Cell viability was assessed with MTT assay. Data are means \pm S.E.M of 3 independent experiments.

(B, C) INS-1E cells were cultured at G30 in the presence or absence of 50 nM MK-2206 for 3 days. Then investigated insulin content (B) or insulin secretion (C). Values were normalized against total protein. Data are means \pm S.E.M of 3 experiments .

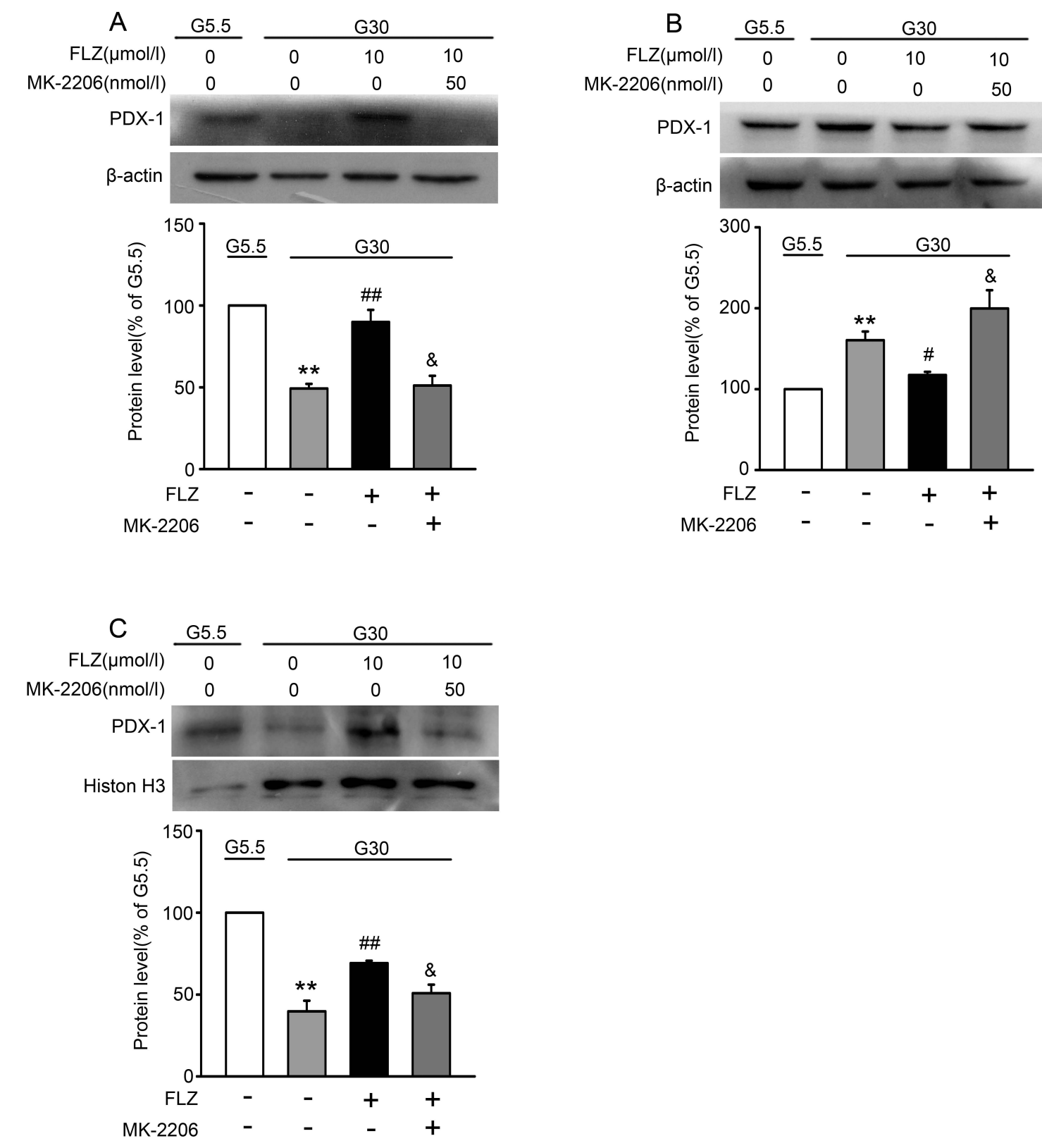
Suppl.Fig.1



Suppl.Fig.2



Suppl.Fig.3



Suppl.Fig.4

