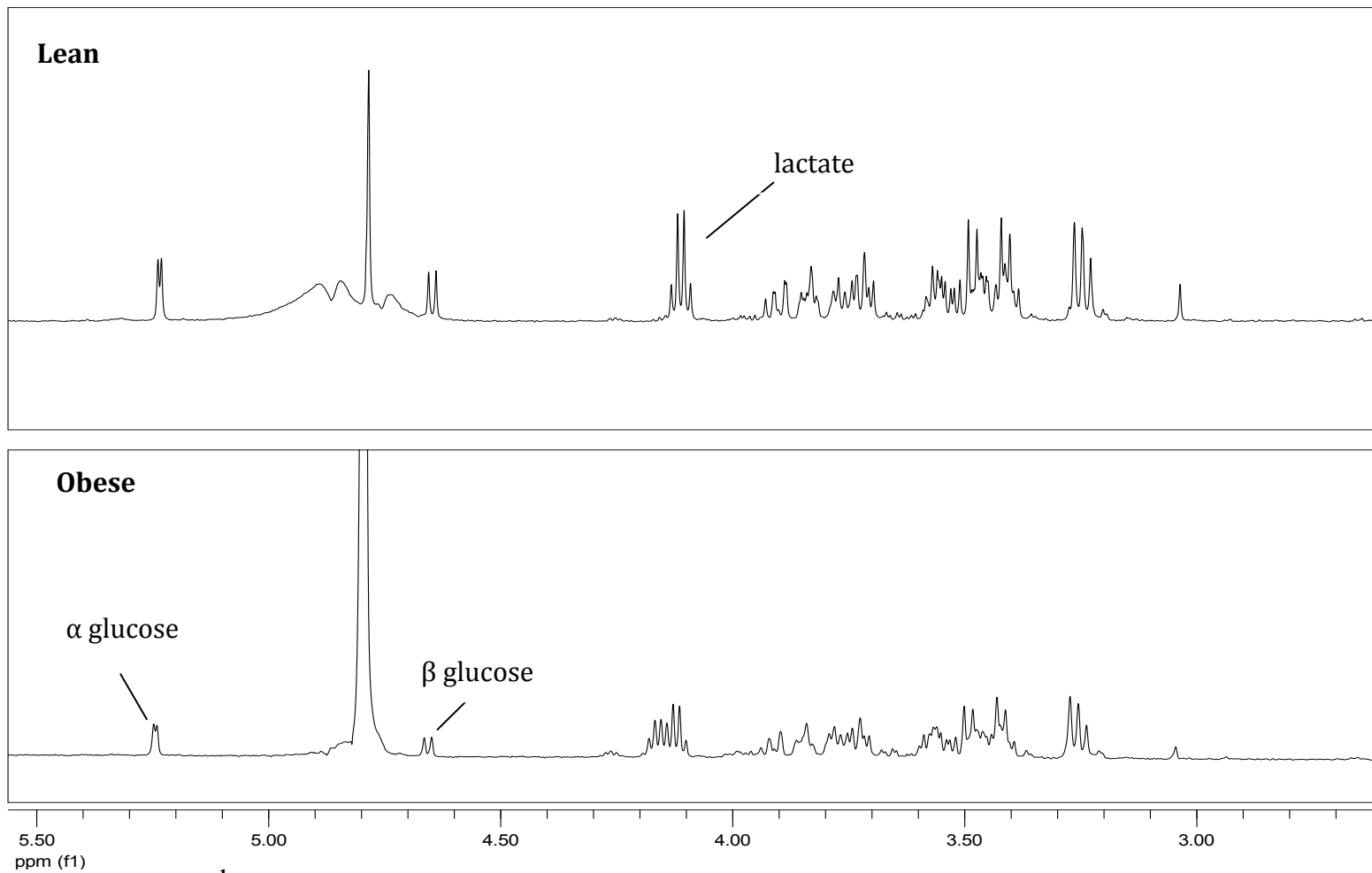
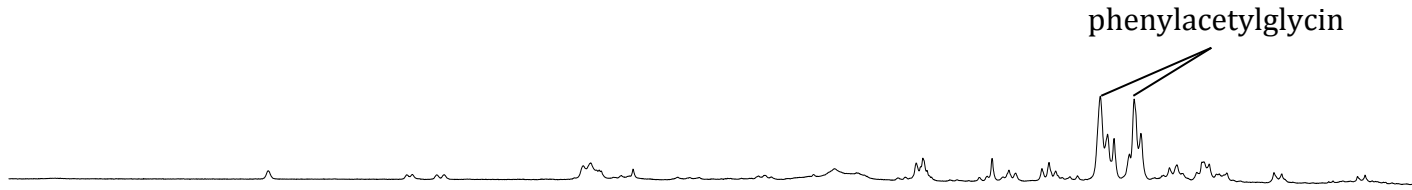


2.50 ppm (f1) 2.00 1.50 1.00

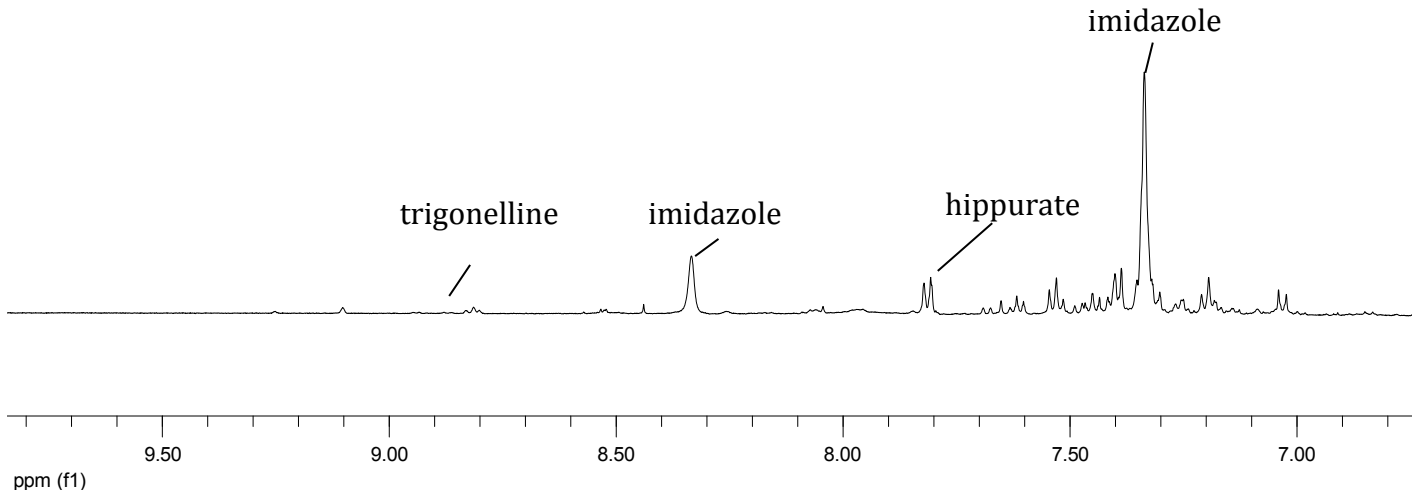


**Typical 500 MHz  $^1\text{H}$  NMR spectra of serum collected from a Sprague- Dawley rat fed a normal diet (lean) and a Sprague- Dawley rat fed a high fat diet (obese) with expanded regions at  $\delta$  1.00 – 2.50 and  $\delta$  3.00 – 5.50 ppm.**

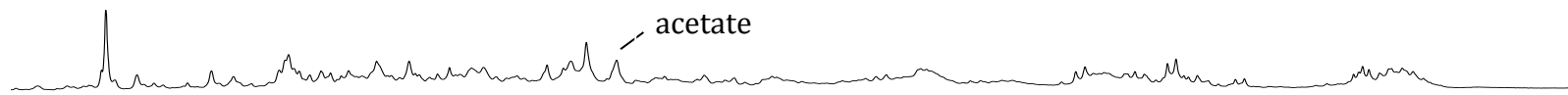
**Obese**



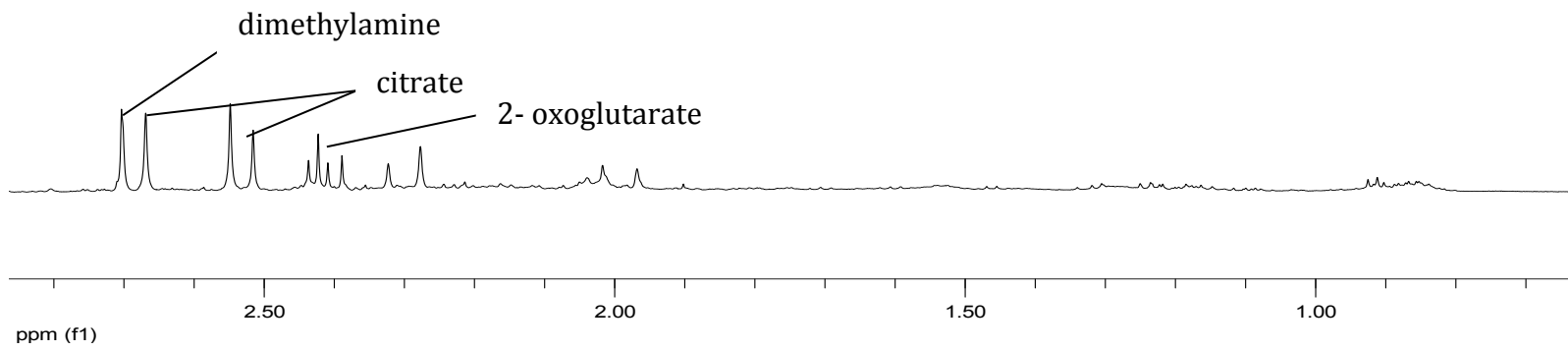
**Lean**

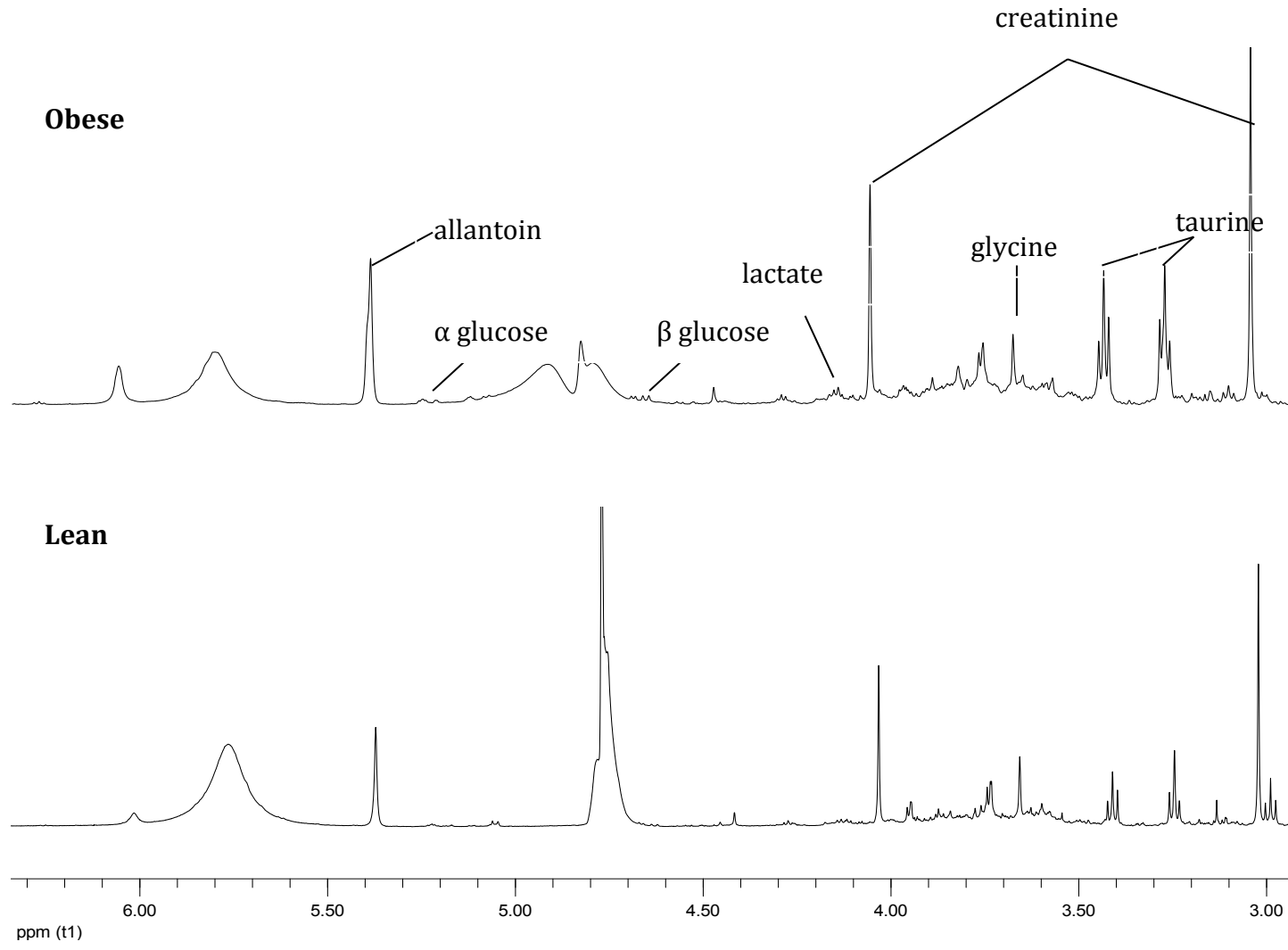


### Obese



### Lean





Typical 500 MHz  $^1\text{H}$  NMR spectra of urine Typical 500 MHz  $^1\text{H}$  NMR spectra of urine collected from a Sprague- Dawley rat fed a high fat diet (obese) and a Sprague- Dawley rat fed a normal diet (lean)) with expanded regions at  $\delta$  7.00 – 9.50,  $\delta$  1.00 – 2.50 and  $\delta$  3.00 – 6.00 ppm.