

## Research Article

# Effects of Population Weighting on PM<sub>10</sub> Concentration Estimation

Ameerah Su'ad Abdul Shakor , Muhammad Alfatih Pahrol, and Mohamad Iqbal Mazeli

*Environmental Health Research Centre, Institute for Medical Research, National Institutes of Health, Ministry of Health Malaysia, 40170 Shah Alam, Selangor, Malaysia*

Correspondence should be addressed to Ameerah Su'ad Abdul Shakor; [ameerahsu3ad@gmail.com](mailto:ameerahsu3ad@gmail.com)

Received 25 October 2019; Revised 30 January 2020; Accepted 24 February 2020; Published 13 April 2020

Academic Editor: Sina Dobaradaran

Copyright © 2020 Ameerah Su'ad Abdul Shakor et al. This is an open access article distributed under the Creative Commons Attribution License, which permits unrestricted use, distribution, and reproduction in any medium, provided the original work is properly cited.

Particulate matter with an aerodynamic diameter of 10  $\mu\text{m}$  or less (PM<sub>10</sub>) pollution poses a considerable threat to human health, and the first step in quantifying health impacts of human exposure to PM<sub>10</sub> pollution is exposure assessment. Population-weighted exposure level (PWEL) estimation is one of the methods that provide a more refined exposure assessment as it includes the spatiotemporal distribution of the population into the pollution concentration estimation. This study assessed the population weighting effects on the estimated PM<sub>10</sub> concentrations in Malaysia for years 2000, 2008, and 2013. Estimated PM<sub>10</sub> annual mean concentrations with a spatial resolution of 5 kilometres retrieved from satellite data and population count obtained from the Gridded Population of the World version 4 (GPWv4) from the Centre for International Earth Science Information Network (CIESIN) were overlaid to generate the PWEL of PM<sub>10</sub> for each state. The calculated PWEL of PM<sub>10</sub> concentrations were then classified based on the World Health Organization (WHO) and the national Air Quality Guidelines (AQG) and interim targets (IT) for comparison. Results revealed that the annual mean PM<sub>10</sub> concentrations in Malaysia ranged from 31 to 73  $\mu\text{g}/\text{m}^3$  but became generally lower, ranging from 20 to 72  $\mu\text{g}/\text{m}^3$  after population weighting, suggesting that the PM<sub>10</sub> population exposure in Malaysia might have been overestimated. PWEL of PM<sub>10</sub> distribution showed that the majority of the population lived in areas that complied with the national AQG, but were vulnerable to exposure level 3 according to the WHO AQG and IT, indicating that the population was nevertheless potentially exposed to significant health effects from long-term exposure to PM<sub>10</sub> pollution.

## 1. Introduction

Air pollution is a major environmental health threat that poses a complex challenge to public health. Despite various efforts taken to reduce its health impacts, it remains a huge problem due to rapid urbanization and growing population along with economic development. In 2012, an estimated 3.7 million premature deaths worldwide was attributable to air pollution, mainly caused by ischaemic heart disease and stroke, and the remaining 20% of which by respiratory disease [1]. According to the World Health Organization (WHO), Southeast Asia has more than 5% increase of particulate matter (PM) levels between 2008 and 2013. More than 50% of cities and populations in Southeast Asia are

experiencing increasing trend of annual PM levels and mostly exceeding the WHO Air Quality Guidelines (AQG) [2].

In Malaysia, notable air pollution sources are from land transportations, industrial emissions, and open burning activities. 70–75% of air pollution in the country are from motor vehicle emissions, while stationary sources of air pollution such as power stations and industrial activities contribute to 20–25% [3]. Malaysia has been experiencing serious haze events since 1994 with more frequent trends over the past few years as reported in the chronology of haze episodes in Malaysia [4]. While open burning of solid wastes and forest fires contributed to only 3–5% of the country's air pollution, it is notable that significant amounts of the air

pollution were result of uncontrolled open burning activities from a neighbouring country [3].

Ambient air pollution is a complex mixture of multi-components. PM and gaseous pollutants such as sulphur dioxide, nitric dioxide, and ozone are among the various components that may affect human health in the short and long term [5, 6]. Among the various components, PM is one of the air pollutants with considerable concern. Studies have found that PM pollution may contribute to adverse pregnancy outcomes [7, 8], type 2 diabetes [9], dementia [10–12], and reduction of life expectancy [13]. And among the different size classes of PM, PM<sub>2.5</sub> (particulate matter with an aerodynamic diameter less than 2.5  $\mu\text{m}$ ) is most consistently associated with adverse health effects [8, 9, 13–15]. However, PM<sub>2.5</sub> measurement data are presently limited in Malaysia; therefore, analyses in this study were focused on PM<sub>10</sub> (particulate matter with an aerodynamic diameter less than 10  $\mu\text{m}$ ) with larger data availability as opposed to PM<sub>2.5</sub>.

Most PM<sub>10</sub> exposure assessment studies have used concentrations of pollutants from monitoring stations and assumed that measured concentrations are representative of the mean exposure of the populations [16–18]. However, directly using the ambient air concentrations to directly assess population exposure, without taking into account the disproportionate spatial and temporal distribution of the pollutant and the population, might not give the actual human exposure levels [19]. In addition, studies have found that the actual human exposure levels were in fact different from the mean value due to atmospheric pollutant distribution variations in time and space [20, 21].

Therefore, the aim of this study was to detect the effect of population weighting on PM<sub>10</sub> concentration estimations. With the spatiotemporal population and pollution distribution variabilities added to the PM<sub>10</sub> concentration estimations, the level of the pollutant concentrations exposed to the population would be different than the mean PM<sub>10</sub> concentrations. Population weighting could give a better view of human exposure levels leading to better quantitative assessments which will then provide a stronger basis for critical public health evaluation on the extent of damage caused by PM<sub>10</sub> pollution.

## 2. Materials and Methods

**2.1. Site Description.** Dataset used in this study covered the whole Malaysia for years 2000, 2008, and 2013. Malaysia is a federation consisting of thirteen states and three federal territories [22, 23]. Eleven states and two federal territories (Kuala Lumpur and Putrajaya) are located in the West of Malaysia, which are further classed into 4 regions (Central region, Northern region, Southern region, and East Coast region) in this study, while the remaining two states (Sarawak and Sabah) and one federal territory (Labuan) are classed as East of Malaysia. The three federal territories hereinafter will be referred to as states for simplicity. The 5 regions classified in this study are illustrated in Figure 1.

Putrajaya was afforded Federal Territory status of becoming Malaysia's third Federal Territory in 2001 [23, 24]. The city was developed for the shift of government seat and

relocation of federal government headquarters from Kuala Lumpur to Putrajaya because of overpopulation in the former [25, 26]. Prior to the declaration, Putrajaya was a territory entirely enclaved within Sepang, a district in the southern part of Selangor [25]. Hence, Putrajaya's PM<sub>10</sub> estimate and population count for year 2000 was based on PM<sub>10</sub> and population data within its geographical coordinates.

**2.2. PM<sub>10</sub> Concentration Estimation.** The data on aerosol products of Moderate Resolution Imaging Spectroradiometer (MODIS) Terra was obtained from the National Aeronautics and Space Administration's (NASA) Level-1 and Atmosphere Archive and Distribution System (LAADS) Distributed Active Archive Centre (DAAC) website [27]. The aerosol products for MOD04, MOD07, and MOD021 were downloaded for the three studied years at a spatial resolution of 5 km. Data on Aerosol Optical Depths (AOD), surface temperature (ST), atmospheric stability (KI), and relative humidity (RH) were then extracted from the aerosol products and projected to the World Geodetic System (WGS) 84 coordinates using Environment for Visualizing Images (ENVI) software version 5.1. Using the Artificial Neural Network (ANN) model from a local study [28], mean annual PM<sub>10</sub> concentration estimations were then calculated from the projected outputs in ArcGIS software version 10.1 as follows:

$$\text{PM}_{10} = 72.599 + (39.399 * \text{H1}) + (-31.944 * \text{H2}) + (-30.735 * \text{H3}), \quad (1)$$

where H are hidden layers, and

$$\begin{aligned} \text{H1} &= \text{TANH}(0.5 * ((-67.612) + (7.216 * \text{AOD}) \\ &\quad + (-0.243 * \text{ST}) + (0.214 * \text{KI}) + (0.058 * \text{RH}))), \\ \text{H2} &= \text{TANH}(0.5 * ((-76.084) + (3.464 * \text{AOD}) \\ &\quad + (-0.319 * \text{ST}) + (0.254 * \text{KI}) + (0.057 * \text{RH}))), \\ \text{H3} &= \text{TANH}(0.5 * ((-32.739) + (-0.667 * \text{AOD}) \\ &\quad + (-0.169 * \text{ST}) + (0.114 * \text{KI}) + (0.075 * \text{RH}))). \end{aligned} \quad (2)$$

The calculated PM<sub>10</sub> concentration estimations were then spatially interpolated using kriging spatial interpolation to fill in the empty pixels, resampled at a resolution of 0.05° × 0.05°, and validated with ground-based PM<sub>10</sub> measurements obtained from the Department of Environment Malaysia (DOE). The results obtained in this study were satisfactory ( $R^2 = 0.6225$ ) between MODIS and the corresponding ground PM<sub>10</sub> (Figure 2).

**2.3. Population Distribution Data Collection.** Population count was obtained from the Gridded Population of the World version 4 (GPWv4) from the Centre for International Earth Science Information Network (CIESIN). GPWv4 is the latest update of the GPW dataset and it demonstrates the spatial relationship of human population and the

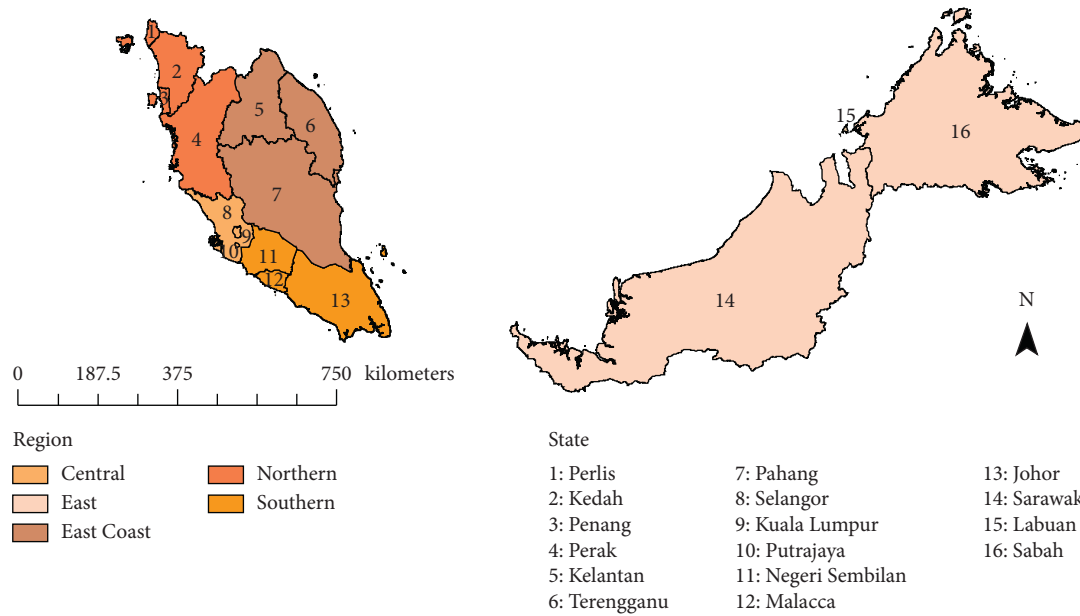


FIGURE 1: Map of Malaysia and the 5 regions.

environment through gridded data products. Earlier versions of GPW have been extensively used in global population studies [27, 29–31]. Gridded population data with a spatial resolution of  $0.05^\circ \times 0.05^\circ$ , matching that of  $PM_{10}$  concentration dataset, were downloaded for the years 2000, 2005, and 2010 (Figure 2). Since the GPWv4 provides gridded human population estimations in 5-year intervals starting from year 2000, the gridded population estimates for years 2008 and 2013 in this study were calculated in ArcGIS software using the exponential population projection formula as follows:

$$P_x = P_y e^{rt}, \quad (3)$$

where  $P_x$  is the population estimate in the target year  $x$ ,  $P_y$  is the base population in year  $y$ ,  $r$  is the average annual Malaysian population growth rate (2.0%) [32], and  $t$  is the number of years between population counts.

**2.4. Population-Weighted Exposure Level to  $PM_{10}$  Calculation.** Using ArcGIS software, the  $PM_{10}$  concentration layers were overlaid on the gridded population distribution layers and population-weighted exposure level (PWEL) of  $PM_{10}$  for each state were calculated based on the exposure equation as follows:

$$PWEL \text{ of } PM_{10} = \frac{\sum (P_i \times C_i)}{\sum P_i}, \quad (4)$$

where  $P_i$  is the population in grid  $i$  and  $C_i$  is its mean annual  $PM_{10}$  concentration.

**2.5. Population Exposure Levels Categorization.** Using the WHO interim target (IT) guideline as the basis [33], five exposure levels were established in this study to categorize the percentage of area and population exposed to different ranges of PWEL of  $PM_{10}$  concentration (Table 1). The IT

guideline was proposed by the WHO with the intention to reduce mortality risks from exposures to air pollutants by promoting progressive pollutant emission control. Exposure level 5 is when PWEL is greater than  $70 \mu\text{g}/\text{m}^3$  of  $PM_{10}$ , suggesting that the population is at more than 15% higher risk for mortality. Lower exposure levels mean more reduction in mortality risks towards the population. Ultimately, exposure level 1 is when the PWEL is less than or equal to  $20 \mu\text{g}/\text{m}^3$  of  $PM_{10}$ , meaning that the state has achieved the WHO's AQG for mean annual  $PM_{10}$  concentrations. Using ArcGIS software, population exposure distribution maps were then created for visualization of the different PWEL of  $PM_{10}$  vulnerability levels in each state during the study period.

Three IT values have been set in the New Malaysia Ambient Air Quality Standard, with an aim of improving air quality in stages and achieving the country's air quality standard by 2020 [34]. With reference to the national standard and IT values, four exposure levels were established in this study to categorize the percentage of area and population exposed to different ranges of PWEL of  $PM_{10}$  concentration (Table 2). Between them, level 1 exposure indicates the percentage of land and population that were occupying in areas within the national  $PM_{10}$  AQG. Population exposure distribution maps for the study period were then created using ArcGIS software to illustrate the different PWEL of  $PM_{10}$  vulnerability levels in each state.

**2.6. Population Density and Human Exposure Level to  $PM_{10}$  Correlation Analysis.** Statistical analysis was done to measure the strength and direction of association that existed between population density and PWEL of  $PM_{10}$ . Inspection of scatter plots between the two variables showed heteroscedasticity. Therefore, Spearman's correlation test was run on the data.

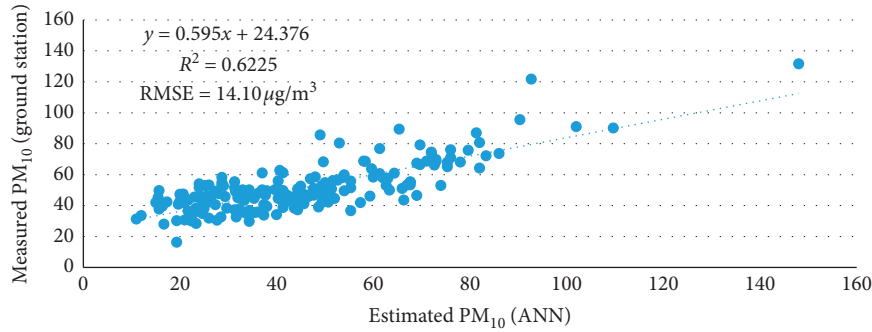


FIGURE 2: Correlation between  $PM_{10}$  concentrations estimations from satellite datasets and measured ground-based  $PM_{10}$  concentrations over the years 2000, 2008, and 2013.

TABLE 1: Five exposure levels established with reference to the WHO AGQ and IT guideline for annual mean  $PM_{10}$  concentrations.

Exposure level	$PM_{10}$ ranges ( $\mu g/m^3$ )	WHO interim target	Basis for the selected level
1	PWEL $\leq 20$	Air quality standard	These are the lowest levels at which total, cardiopulmonary, and lung cancer mortality have been shown to increase with more than 95% confidence level in response to long-term exposure to $PM_{2.5}$
2	$20 < PWEL \leq 30$	Interim Target-3 (IT-3)	In addition to other health benefits, these levels reduce the mortality risk by approximately 6% [2–11%] relative to the IT-2 level
3	$30 < PWEL \leq 50$	Interim Target-2 (IT-2)	In addition to other health benefits, these levels lower the risk of premature mortality by approximately 6% [2–11%] relative to the IT-1 level
4	$50 < PWEL \leq 70$	Interim Target-1 (IT-1)	These levels are associated with about a 15% higher long-term mortality risk relative to the AQG level
5	PWEL $> 70$	—	—

TABLE 2: Four exposure levels established with reference to the new Malaysia ambient AGQ and IT guideline for annual mean  $PM_{10}$  concentrations.

Exposure level	$PM_{10}$ ranges ( $\mu g/m^3$ )	Malaysia interim target	Target year to achieve
1	PWEL $\leq 40$	Air quality standard	2020
2	$40 < PWEL \leq 45$	Interim Target-2 (IT-2)	2018
3	$45 < PWEL \leq 50$	Interim Target-1 (IT-1)	2015
4	PWEL $> 50$	—	—

### 3. Results

**3.1. Malaysian Population Distribution.** Table 3 represents the total geographical area, demographic details, and the population densities of each state over the study period. The spatial distribution of population was uneven in each state and population distribution trend was similar for the three years. Population densities were the highest in the Central region, lower in the East Coast region, and the lowest in East of Malaysia. Over the years, Kuala Lumpur remained as the state with the highest population density limited to only 0.07% of the total area for Malaysia, contrary to Sarawak which has the lowest population density despite having the largest area ratio of 37.65%.

**3.2.  $PM_{10}$  Pollution in Malaysia.** Table 4 shows the  $PM_{10}$  concentrations in Malaysia and its states before and after population weighting. The mean annual pollution concentration in 2013 for the whole country was seen to be increased as compared to 2000. However, lower pollution

concentration estimates were observed in 2008 as compared to 2000 and 2008. In general,  $PM_{10}$  pollution concentrations were found higher in densely populated states, namely, Kuala Lumpur, Putrajaya, Selangor, and Penang.

**3.3. Population Exposure to Estimated  $PM_{10}$ .** During the study period, the annual mean  $PM_{10}$  concentration and population-weighted exposure levels of  $PM_{10}$  in the states ranged from 31 to 73  $\mu g/m^3$ , whereas the latter showed concentrations from 20 to 72  $\mu g/m^3$  (Table 4). With population weighting,  $PM_{10}$  was generally lower than the mean concentration in most states, except in Kuala Lumpur in 2000; Putrajaya, Pahang, and Terengganu in 2008; and Selangor in 2013 where PWEL of  $PM_{10}$  were slightly higher than the mean concentration.

**3.4. Population and Area Ratio in Different Exposure Levels.** Table 5 and Figure 3 show the percentage of area and population exposed to different ranges of PWEL of  $PM_{10}$

TABLE 3: Demography and area proportion of Malaysia and its states.

Region	State	Area ratio (%)	2000		2008		2013	
			Population ratio (%)	Population density (persons/km <sup>2</sup> )	Population ratio (%)	Population density (persons/km <sup>2</sup> )	Population ratio (%)	Population density (persons/km <sup>2</sup> )
Central region	Selangor	2.40	22.75	658	23.87	823	24.54	949
	Kuala Lumpur	0.07	5.68	5375	5.66	6376	5.61	7095
	Putrajaya	0.01	0.20	911	0.23	1266	0.25	1562
	Penang	0.31	5.05	1124	5.07	1345	5.06	1505
Northern region	Perak	6.36	8.75	95	8.29	108	7.98	116
	Kedah	2.85	6.60	161	6.42	186	6.30	205
	Perlis	0.24	1.06	306	0.77	263	0.73	281
	Johor	5.80	11.10	133	11.13	159	11.16	179
Southern region	Negeri Sembilan	2.01	3.68	127	3.56	146	3.50	161
	Malacca	0.52	2.45	328	2.54	406	2.59	463
East Coast region	Pahang	10.88	5.31	34	5.05	38	4.88	42
	Terengganu	3.93	3.73	66	3.50	74	3.35	79
	Kelantan	4.57	5.38	82	5.03	91	4.80	97
East Malaysia	Sarawak	37.65	8.70	16	8.35	18	8.14	20
	Sabah	22.36	9.41	29	10.38	38	10.96	46
	Labuan	0.03	0.16	395	0.15	453	0.15	493
Malaysia		100.0	100.0	9840	100.0	11791	100.0	13293

TABLE 4: Mean annual PM<sub>10</sub> concentration and population-weighted exposure levels of PM<sub>10</sub> in Malaysia and its states (unit  $\mu\text{g}/\text{m}^3$ ).

Region	State	2000		2008		2013	
		Mean PM <sub>10</sub>	PWEL of PM <sub>10</sub>	Mean PM <sub>10</sub>	PWEL of PM <sub>10</sub>	Mean PM <sub>10</sub>	PWEL of PM <sub>10</sub>
Central region	Selangor	53	51	41	44	51	55
	Kuala Lumpur	65	67	56	49	70	57
	Putrajaya	67	33	54	58	73	72
	Penang	42	20	50	36	55	38
Northern region	Perak	48	44	36	32	46	40
	Kedah	47	37	46	39	53	50
	Perlis	43	29	48	46	67	54
	Johor	47	39	36	32	53	41
Southern region	Negeri Sembilan	47	44	37	38	54	40
	Malacca	49	38	40	27	51	36
	Pahang	42	38	32	30	50	46
East Coast region	Terengganu	43	37	35	36	49	49
	Kelantan	42	41	33	36	58	40
East Malaysia	Sarawak	41	36	31	30	39	34
	Sabah	42	35	33	29	40	34
	Labuan	42	26	43	43	45	46
Malaysia		47	38	41	38	53	46

concentration with reference to the WHO IT and AQG. During the key period, 65.40–73.38% of the Malaysian population were living in level 3 exposure areas where PWEL ranged from 31 to 50  $\mu\text{g}/\text{m}^3$  of PM<sub>10</sub>. In year 2000, only Penang which accounted for 0.31% of the land occupied by 5.05% of the total Malaysian population complied with the WHO guideline for annual mean PM<sub>10</sub> concentration, whereas in 2008 and 2013, none of the states achieved the WHO recommended mean annual PM<sub>10</sub> concentration levels. None of the areas were seen to reach level 5 exposure with PM<sub>10</sub> concentration exceeding 70  $\mu\text{g}/\text{m}^3$  in 2000 and

2008. However, population exposure to the pollutant worsened in 2013, where the whole country was above exposure level 2, with Putrajaya accounting for 0.01% of the land and 0.25% of the Malaysian population were vulnerable to level 5 exposure.

Table 6 and Figure 4 show the percentage of area and population exposed to different ranges of PWEL of PM<sub>10</sub> concentration with reference to the national PM<sub>10</sub> IT and AQG. A majority of the population were seen living in areas that complied with the national AQG where PM<sub>10</sub> concentrations were less than or equal to 40  $\mu\text{g}/\text{m}^3$ . However,



TABLE 5: Exposure levels of the Malaysia population and area distributions in different PWEL of PM<sub>10</sub> concentrations according to the WHO guideline and interim targets for annual mean PM<sub>10</sub> concentrations.

Exposure level	PM <sub>10</sub> ranges ( $\mu\text{g}/\text{m}^3$ )	2000		2008		2013	
		Area ratio (%)	Population ratio (%)	Area ratio (%)	Population ratio (%)	Area ratio (%)	Population ratio (%)
1	PWEL $\leq 20$	0.31	5.05	0.00	0.00	0.00	0.00
2	$20 < \text{PWEL} \leq 30$	0.24	1.06	71.41	26.30	0.00	0.00
3	$30 < \text{PWEL} \leq 50$	96.97	65.40	28.58	73.38	97.27	68.87
4	$50 < \text{PWEL} \leq 70$	2.47	28.41	0.01	0.23	2.71	30.88
5	PWEL $> 70$	0.00	0.00	0.00	0.00	0.01	0.25

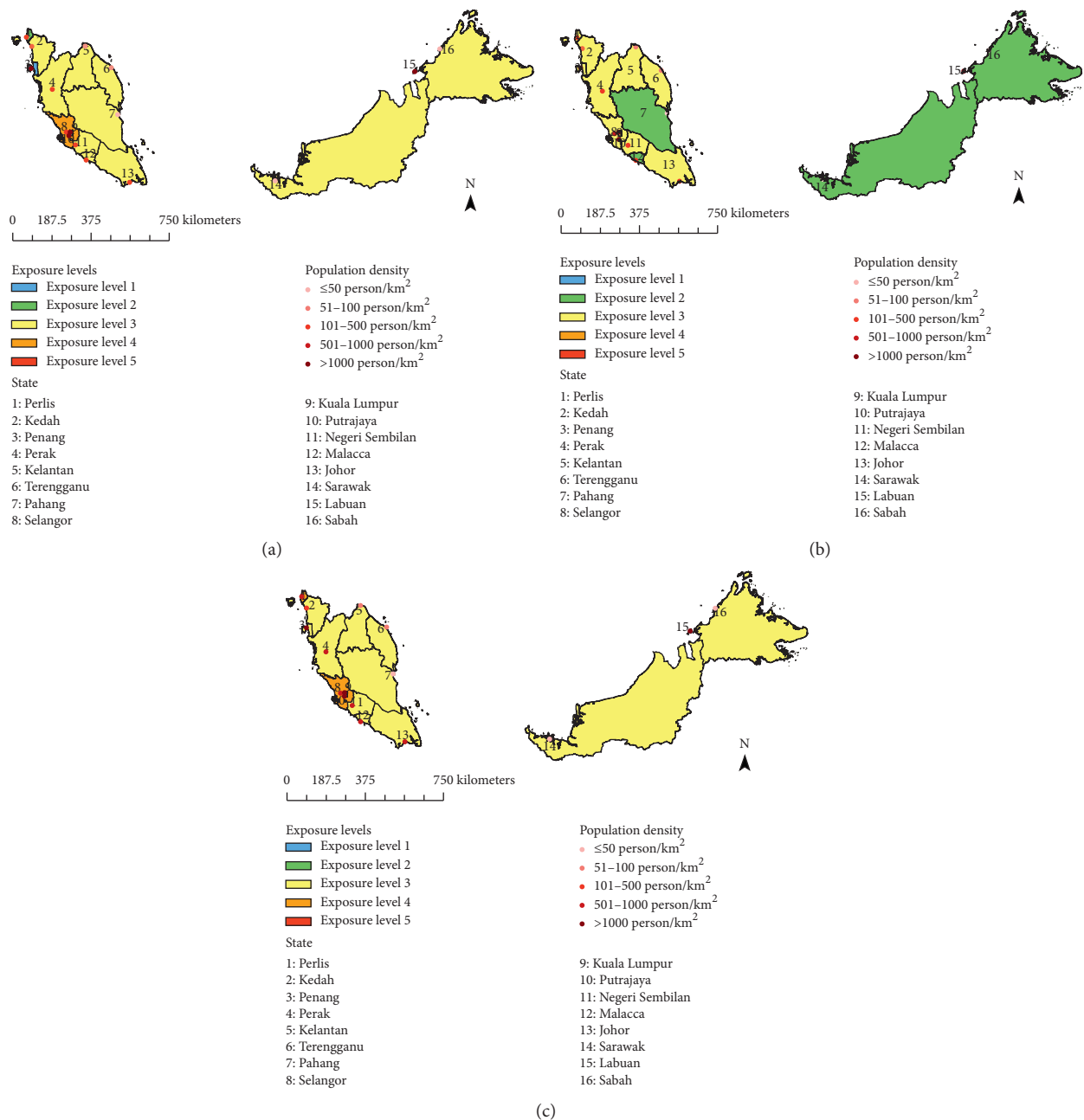


FIGURE 3: The area distributions of Malaysia in different PWEL of PM<sub>10</sub> concentration levels according to WHO guideline and interim targets for annual mean PM<sub>10</sub> concentrations in (a) 2000, (b) 2008, and (c) 2013.

TABLE 6: Exposure levels of the Malaysia population and area distributions in different PWEL of PM<sub>10</sub> concentrations according to the new Malaysia ambient air quality standard and interim targets for annual mean PM<sub>10</sub> concentrations.

Exposure level	PM <sub>10</sub> ranges (μg/m <sup>3</sup> )	2000		2008		2013	
		Area ratio (%)	Population ratio (%)	Area ratio (%)	Population ratio (%)	Area ratio (%)	Population ratio (%)
1	PWEL ≤40	84.55	53.54	97.24	69.27	73.79	43.03
2	40 <PWEL ≤45	12.98	17.96	2.43	24.00	5.80	11.16
3	45 <PWEL ≤50	0.00	0.00	0.31	6.42	17.69	14.68
4	PWEL >50	2.47	28.41	0.01	0.23	2.73	31.13

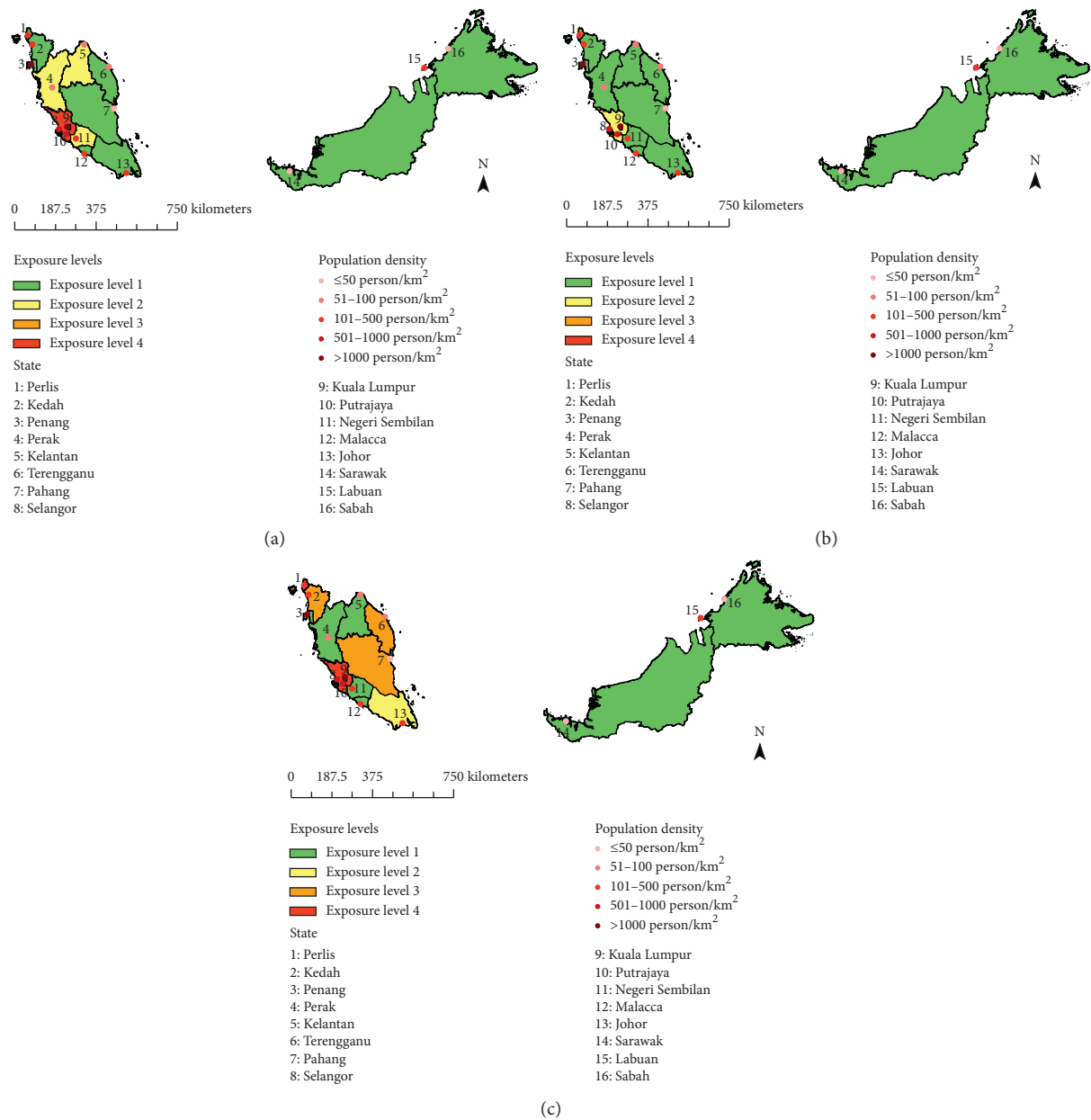


FIGURE 4: The area distributions of Malaysia in different PWEL of PM<sub>10</sub> concentration levels according to new Malaysia ambient air quality standard and interim targets for annual mean PM<sub>10</sub> concentrations in (a) 2000, (b) 2008, and (c) 2013.

the ratio of area and population living in the national recommended mean annual PM<sub>10</sub> concentration levels decreased in 2013. Less land and less people resided in

exposure level 1 and 2 areas, while more land and more people resided in exposure level 3 and 4 areas were observed in 2013 as compared to 2000.

**3.5. Correlation between Population Density and Human Exposure.** Results showed that there was low positive correlation between population density and PWEL of PM<sub>10</sub>,  $r = 0.442$ ,  $p = 0.002$  (Table 7), suggesting that the two were marginally correlated. The data reflects that as population density increases in value, so does the PWEL of PM<sub>10</sub> to some extent. However, the amount of increase was not constant over the whole range of values.

## 4. Discussion

Malaysia is a rapidly developing and newly industrialized country. Industrial activities have polluted the air with smoke from vehicles, factories, and open burning activities; hence, an increasing trend of PM<sub>10</sub> was assumed as years go by from 2000 to 2013. However, this study revealed an overall reduction of PM<sub>10</sub> concentrations in 2008. Upon further investigation, it was found that the lower PM<sub>10</sub> concentrations in between the key period could be partially attributable to local meteorological conditions and confounding factors such as precipitation, humidity, and economy.

Studies have found that influence of climate, particularly rainfall, contributes to lower PM<sub>10</sub> concentrations through washing effect [35–38]. It should be noted that the mean annual rainfall in Malaysia was higher in 2008 as compared to 2000 and 2013, where the average yearly precipitation recorded for the country was 2393 mm [39], 10535 mm, and 9109 mm [40, 41] for 2000, 2008, and 2013, respectively. Therefore, the higher precipitation level could have reduced the PM<sub>10</sub> concentrations in 2008. Additionally, the 24-hour mean RH that was extracted and calculated from the downloaded aerosol products revealed that the average RH was 62%, 67%, and 65% for years 2000, 2008, and 2013, respectively [42]. Due to the fact that particulate matter tends to accumulate and deposit on the ground rather than becoming airborne when ambient relative humidity is high, the higher RH index as a consequent of higher rainfall in 2008 could also explain the lower PM<sub>10</sub> concentration levels in that year. These findings are consistent with several studies that have assessed the linkages between meteorological processes and air pollution and have found that humidity increases as rainfall increases which then subsequently decreases the PM<sub>10</sub> concentration [37, 38].

Apart from climate, economy may also influence the variation of air pollution concentrations of a country in several ways. It is noteworthy that Malaysia was affected by the Global Financial Crisis in 2008 after a decade of steady economic growth [43]. Censuses have reported that the country had faced declinations in construction, manufacturing, mining, and quarrying businesses in 2008 in line with the deterioration in external demand [44, 45]. Malaysia's economy started to recover the next year and in 2013 the government announced that the country's gross national income per capita then had increased by 50% from 2009 [43]. Similarly, previous studies have also remarked reductions of particulate pollution in relation to economic recessions [46], followed by reversion of the pollution levels after the economy rebounds [3, 47, 48].

TABLE 7: Spearman's correlation coefficients  $r$  of population density and PWEL of PM<sub>10</sub> ( $n = 48$ ).

Variable	Median (IQR)	$r$	$p$ value <sup>a</sup>
Population density (persons/km <sup>2</sup> )	170 (537)	0.438	0.002
PWEL of PM <sub>10</sub> (μg/m <sup>3</sup> )	39 (11)		

Note. <sup>a</sup>Spearman's rank order correlation. IQR: interquartile range.

One of the variables in the calculation of the population exposure is the distribution of population density, i.e., population in grid  $i$  ( $P_i$ ). It is dependent on the dynamics of local populations which could be seen highly influenced by urbanisation. In Malaysia, significant urban agglomeration is observed more towards the central region with an urbanisation level of 100% in Kuala Lumpur and Putrajaya and 91.4% in Selangor. Apart from the three states, another state with high level of urbanisation is Penang in the northern region (90.8%) [49]. When calculating PWEL of PM<sub>10</sub> for each state, it is expected that the exposure increases as the population density increases. Other exposure studies have reported higher PM<sub>10</sub> concentrations after population weighting, attributing it to high population density [31, 50–52]. However, results from this study revealed the opposite. Overall, lower PWEL of PM<sub>10</sub> values were observed in this study indicating that most people were probably exposed to lower PM<sub>10</sub> concentrations than the actual mean. Despite the contrary, it should be noted that the other studies were done in China and India where the population densities are very much higher as compared to Malaysia. Other than the diverse population and pollution spatial distributions, the massive population density variation between the countries might have also contributed to the differences in postweighting values.

In 2000, Penang unexpectedly recorded the lowest PWEL of PM<sub>10</sub> concentration for the whole study duration. With a mean annual PM<sub>10</sub> concentration of 42 μg/m<sup>3</sup> and referring to the WHO IT and AQG guideline, Penang should have been categorized in exposure level 3. However, after population weighting, the estimated PM<sub>10</sub> was lowered to 20 μg/m<sup>3</sup>, thereby classifying Penang in exposure level 1. Moreover, Penang is one of the country's most urbanised states and accommodates among the nation's highest population densities [49]; thus, higher exposure levels were presumed. Upon further investigation, it was discovered that the state's economic growth slowed down in 2000 due to weakening of manufacturing dynamism [53]. Likewise, previous studies have shown that attenuation of industrial sources of particulate pollution led to pollution reduction [47, 48, 54]. The combination of the lower spatial distribution of PM<sub>10</sub> on top of the high population density could explain the reduced PWEL of PM<sub>10</sub> concentration estimations. Therefore, population density and urbanisation level of a region are not the only factors that may reflect PWEL of PM<sub>10</sub> values, but rather a combination of demographic and local contributing factors.

Though PWEL of PM<sub>10</sub> concentrations in Malaysia were overall lower as compared to the actual mean, results from



this study have shown that the population were nevertheless exposed to worsening levels of  $PM_{10}$  concentration. This is regrettably expected that the more areas are being developed, the more people will migrate and reside in these regions susceptible to unhealthy levels of air quality, making them vulnerable to chronic exposure to the coarse pollutant. These findings are consistent with previous population exposure assessment studies which also noted that more people are living in areas prone to higher  $PM_{10}$  concentrations [50, 55, 56].

Industrial emission is one of the major sources of air pollution in Malaysia [57], which is an unfavourable outcome of the intense process of urbanisation and industrial development since this country aimed for rapid economic growth to obtain industrial country status by 2020. Due to this phenomenon, Malaysia has to contend with increasing air pollution and has set its own interim targets with regard to the national capability in air quality management. The cut-off value for  $PM_{10}$  pollution in the national AQG and IT guideline is higher than most developed countries because the country has yet to complete its industrialization programs.

To further address this issue, the DOE under The Ministry of Energy, Science, Technology, Environment and Climate Change Malaysia (MESTECC) has outlined national and international preventive measures. One of the efforts include enforcing laws that prohibit the public from engaging in open burning [58]. Malaysia has also signed the ASEAN Agreement on Transboundary Haze Pollution in 2002 as an endeavour to tackle the issue [59]. Ratification of the treaty is hoped to start a new dimension in addressing forest and land deforestation issues as well as transboundary haze concerns.

To improve air quality status for the betterment of people's lives, the DOE have also outlined five strategies under the *Pelan Tindakan Udara Bersih* (Clean Air Action Plan) developed in 2011 [60]. The five strategies are (1) to reduce motor vehicle emissions, (2) reduce air pollution due to land and forest fires, (3) reduce industrial emissions, (4) develop self-efficacy and ability, and (5) strengthen community engagement and awareness. While it may take decades for the outcomes of these strategies to be visible, the efforts must nevertheless be continued. A great example is the Clean Air Act, the law that defines the United States Environmental Protection Agency's (EPA) responsibilities for protecting and improving its air quality, where actions which have been taken to implement the statutes have reduced the key air pollutant emissions since 1990 by 50% [61]. Therefore, it is evident that persistent and consistent action can definitely lead to dramatic improvements of the air quality.

## 5. Limitation

This study has used satellite remote sensing observations for  $PM_{10}$  concentration estimations over Malaysia in view of limited number of air pollution monitoring stations coverage for the whole country. Thick cloud covers and satellite coverage gaps are known limitations when using satellite

data and due to mid-latitude jet stream instability, extensive cloudiness is a common phenomenon in Southeast Asia [62]. This occurrence reduces the number of cloud-free images available for AOD retrievals [63] which could affect the estimated  $PM_{10}$  concentrations and subsequently influence the PWEL of  $PM_{10}$  values.

Moreover, this study only provides an overview on the level of Malaysian population exposure to coarse particulate matter. The average time spent outdoors by the population and source-orientated assessments should be accounted for more accurate inhaled concentrations and human exposure levels. Such investigations would enable more precise and comprehensive evaluations for better understanding of the true level of human exposure to air pollution.

## 6. Conclusion

The mean annual population exposure to  $PM_{10}$  in Malaysia for 2000, 2008, and 2013 achieved the national AQG but not the WHO standards, indicating that the majority of the Malaysian population lived in the probable risk zones which can induce significant health effects associated with long-term  $PM_{10}$  exposures. Geographic, demographic, and local confounding factors contributed to the dynamic spatio-temporal variations of both  $PM_{10}$  concentration and population distribution, which then affected the PWEL of  $PM_{10}$  estimation concentrations. Therefore, including population weighting into  $PM_{10}$  concentration estimations could improve human exposure assessment as it takes these variables into account. The real situation would hence be better reflected and policy makers will be able to properly evaluate and establish appropriate control measures to achieve the lowest possible risk of population exposure to air pollution.

## Data Availability

The data used to support the findings of this study are available from the corresponding author upon request.

## Conflicts of Interest

The authors have no conflicts of interest with the materials presented in this paper.

## Acknowledgments

This study was financially supported by the Ministry of Health Malaysia Research Grant (MRG) under the National Medical Research Register code NMRR-16-2742-33757. The authors would like to thank the Director General of Health Malaysia for his permission to publish this article and the DOE for providing the  $PM_{10}$  concentrations data. The authors also acknowledge NASA for making MODIS data available to users. The authors also thank Dr. Rafiza Shahrudin for helping with the paper editing.

## References

- [1] World Health Organization, *7 Million Premature Deaths Annually Linked to Air Pollution*, World Health Organization,

- Geneva, Switzerland, 2014, <https://www.who.int/mediacentre/news/releases/2014/air-pollution/en/>.
- [2] World Health Organization, *WHO's Urban Ambient Air Pollution Database*, World Health Organization, Geneva, Switzerland, 2016, [https://www.who.int/phe/health\\_topics/outdoorair/databases/AAP\\_database\\_summary\\_results\\_2016\\_v02.pdf?ua=1](https://www.who.int/phe/health_topics/outdoorair/databases/AAP_database_summary_results_2016_v02.pdf?ua=1).
  - [3] R. Afroz, M. N. Hassan, and N. A. Ibrahim, "Review of air pollution and health impacts in Malaysia," *Environmental Research*, vol. 92, no. 2, pp. 71–77, 2003.
  - [4] Department of Environment Malaysia, *Chronology OF Haze Episodes in Malaysia*, Department of Environment Malaysia, Putrajaya, Malaysia, 2015.
  - [5] F. Dominici, R. D. Peng, M. L. Bell et al., "Fine particulate air pollution and hospital admission for cardiovascular and respiratory diseases," *JAMA*, vol. 295, no. 10, pp. 1127–1134, 2006.
  - [6] F. C. Goldizen, P. D. Sly, and L. D. Knibbs, "Respiratory effects of air pollution on children," *Pediatric Pulmonology*, vol. 51, no. 1, pp. 94–108, 2016.
  - [7] I. Kloog, S. J. Melly, W. L. Ridgway, B. A. Coull, and J. Schwartz, "Using new satellite based exposure methods to study the association between pregnancy PM<sub>2.5</sub> exposure, premature birth and birth weight in Massachusetts," *Environmental Health: A Global Access Science Source*, vol. 11, no. 1, p. 1, 2012.
  - [8] X. Zhu, Y. Liu, Y. Chen, C. Yao, Z. Che, and J. Cao, "Maternal exposure to fine particulate matter (PM<sub>2.5</sub>) and pregnancy outcomes: a meta-analysis," *Environmental Science and Pollution Research*, vol. 22, no. 5, pp. 3383–3396, 2015.
  - [9] B. Bowe, Y. Xie, T. Li, Y. Yan, H. Xian, and Z. Al-Aly, "The 2016 global and national burden of diabetes mellitus attributable to PM<sub>2.5</sub> air pollution," *The Lancet Planetary Health*, vol. 2, no. 7, pp. e301–e312, 2018.
  - [10] L. Calderón-Garcidueñas, B. Azzarelli, H. Acuna et al., "Safety evaluation-environmental air pollution and brain damage," *Toxicologic Pathology*, vol. 30, no. 3, pp. 373–389, 2002.
  - [11] L. Calderón-Garcidueñas, R. Engle, A. Mora-Tiscareño et al., "Exposure to severe urban air pollution influences cognitive outcomes, brain volume and systemic inflammation in clinically healthy children," *Brain and Cognition*, vol. 77, no. 3, pp. 345–355, 2011.
  - [12] X. Zhang, X. Chen, and X. Zhang, "The impact of exposure to air pollution on cognitive performance," *Proceedings of the National Academy of Sciences*, vol. 115, no. 37, pp. 9193–9197, 2018.
  - [13] J. S. Apte, M. Brauer, A. J. Cohen, M. Ezzati, and C. A. Pope, "Ambient PM<sub>2.5</sub> reduces global and regional life expectancy," *Environmental Science & Technology Letters*, vol. 5, no. 9, pp. 546–551, 2018.
  - [14] C. A. Pope, M. Ezzati, and D. W. Dockery, "Fine-particulate air pollution and life expectancy in the United States," *New England Journal of Medicine*, vol. 360, no. 4, pp. 376–386, 2009.
  - [15] R. D. Brook, S. Rajagopalan, C. A. Pope et al., "Particulate matter air pollution and cardiovascular disease," *Circulation*, vol. 121, no. 21, pp. 2331–2378, 2010.
  - [16] Y. O. Khaniabadi, G. Goudarzi, S. M. Daryanoosh, A. Borgini, A. Tittarelli, and A. De Marco, "Exposure to PM<sub>10</sub>, NO<sub>2</sub>, and O<sub>3</sub> and impacts on human health," *Environmental Science and Pollution Research*, vol. 24, no. 3, pp. 2781–2789, 2017.
  - [17] K. J. Maji, M. Arora, and A. K. Dikshit, "Burden of disease attributed to ambient PM<sub>2.5</sub> and PM<sub>10</sub> exposure in 190 cities in China," *Environmental Science and Pollution Research*, vol. 24, no. 12, pp. 11559–11572, 2017.
  - [18] A. Nikoonahad, R. Naserifar, V. Alipour et al., "Assessment of hospitalization and mortality from exposure to PM<sub>10</sub> using AirQ modeling in Ilam, Iran," *Environmental Science and Pollution Research*, vol. 24, no. 27, pp. 21791–21796, 2017.
  - [19] S. Wang, Y. Zhao, G. Chen, F. Wang, K. Aunan, and J. Hao, "Assessment of population exposure to particulate matter pollution in Chongqing, China," *Environmental Pollution*, vol. 153, no. 1, pp. 247–256, 2008.
  - [20] Y. Zhu, W. C. Hinds, S. Kim, S. Shen, and C. Sioutas, "Study of ultrafine particles near a major highway with heavy-duty diesel traffic," *Atmospheric Environment*, vol. 36, no. 27, pp. 4323–4335, 2002.
  - [21] K. Ito, N. Xue, and G. Thurston, "Spatial variation of PM<sub>2.5</sub> chemical species and source-apportioned mass concentrations in New York City," *Atmospheric Environment*, vol. 38, no. 31, pp. 5269–5282, 2004.
  - [22] Government of Malaysia, "Laws of Malaysia: Federal constitution incorporating all amendments up to P.U.(A) 164/2009," 2009, <http://www.jac.gov.my/images/stories/akta/>.
  - [23] Statoids, "States of Malaysia," 2010, <http://www.statoids.com/unmy.html>.
  - [24] "Sejarah Pejabat Pengarah Tanah Dan Galian Wilayah Persekutuan," 2007, <http://www.ptgwp.gov.my/portal/sejarah?target=sejarah>.
  - [25] J. I. John, "Placemaking and urban management: the Putrajaya experience," in *Proceedings of the INTA 28 World Urban Development Congress*, Kuala Lumpur, Malaysia, September 2004.
  - [26] P. Putrajaya, "Background of Putrajaya," 2014, <http://portal.ppj.gov.my>.
  - [27] Center for International Earth Science Information Network (CIESIN), *Documentation for the Gridded Population of the World, Version 4 (GPWv4), Revision 11 Data Sets*, NASA Socioeconomic Data And Applications Center (SEDAC), Palisades, NY, USA, 2018, <https://doi.org/10.7927/H45Q4T5F>.
  - [28] N. A. F. Kamarul Zaman, K. D. Kanniah, and D. G. Kaskaoutis, "Estimating particulate matter using satellite based aerosol optical depth and meteorological variables in Malaysia," *Atmospheric Research*, vol. 193, pp. 142–162, 2017.
  - [29] X. Yang, Y. Huang, P. Dong, D. Jiang, and H. Liu, "An updating system for the gridded population database of China based on remote sensing, GIS and spatial database technologies," *Sensors*, vol. 9, no. 2, pp. 1128–1140, 2009.
  - [30] Z. Sun, X. An, Y. Tao, and Q. Hou, "Assessment of population exposure to PM<sub>10</sub> for respiratory disease in Lanzhou (China) and its health-related economic costs based on GIS," *BMC Public Health*, vol. 13, no. 1, 2013.
  - [31] R. Prasannavenkatesh, R. Andimuthu, P. Kandasamy et al., "Assessment of population exposure to coarse and fine particulate matter in the urban areas of Chennai, India," *The Scientific World Journal*, vol. 2015, Article ID 643714, 11 pages, 2015.
  - [32] Department of Statistics Malaysia, "Population distribution and basic demographic characteristics," 2010, [https://www.dosm.gov.my/v1/index.php?r=column/cthem&menu\\_id=L0pheU43NWJwRWVSZklWdzQ4TlhUUT09&bul\\_id=MDMxdHZjWtk1SjFzTzNkRXYzcVZjd09#](https://www.dosm.gov.my/v1/index.php?r=column/cthem&menu_id=L0pheU43NWJwRWVSZklWdzQ4TlhUUT09&bul_id=MDMxdHZjWtk1SjFzTzNkRXYzcVZjd09#).
  - [33] World Health Organization, *WHO Air Quality Guidelines for Particulate Matter, Ozone, Nitrogen Dioxide and Sulfur*

- Dioxide*, World Health Organization, Geneva, Switzerland, 2005.
- [34] Department of Environment Malaysia, "New Malaysia ambient air quality standard," 2013, <https://www.doe.gov.my/portallv1/en/info-umum/english-air-quality-trend/108>.
  - [35] M. Rashid and R. F. Griffiths, "Trends of atmospheric fine and coarse particulates in Kuala Lumpur, Malaysia (1986-1990)," *Environmental Technology*, vol. 16, no. 1, pp. 25–34, 1995.
  - [36] L. Juneng, M. T. Latif, F. T. Tangang, and H. Mansor, "Spatio-temporal characteristics of PM<sub>10</sub> concentration across Malaysia," *Atmospheric Environment*, vol. 43, no. 30, pp. 4584–4594, 2009.
  - [37] D. Giri, V. Krishna Murthy, and P. R. Adhikary, "The influence of meteorological conditions on PM<sub>10</sub> concentrations in Kathmandu valley," *International Journal of Environmental Research*, vol. 2, no. 1, pp. 49–60, 2008.
  - [38] W. R. Wan Mahiyuddin, M. Sahani, R. Aripin, M. T. Latif, T.-Q. Thach, and C.-M. Wong, "Short-term effects of daily air pollution on mortality," *Atmospheric Environment*, vol. 65, pp. 69–79, 2013.
  - [39] C. L. Wong, Z. Yusop, and T. Ismail, "Trend of daily rainfall and temperature in Peninsular Malaysia based on gridded data set," *International Journal of GEOMATE*, vol. 14, no. 44, pp. 65–72, 2018.
  - [40] Malaysia Meteorological Department, *Records of Meteorological Data-Daily Precipitation for Malaysia for 2008 To 2014*, Malaysia Meteorological Department, Petaling Jaya, Malaysia, 2014.
  - [41] The World Bank Group, "Average monthly temperature and rainfall in Malaysia from 1991 to 2016," in *Climate Change Knowledge Portal (CCKP)*, The World Bank Group, Washington, DC, USA, 2016, <https://climateknowledgeportal.worldbank.org/country/malaysia>.
  - [42] A. Shakor, *Malaysia PWEL of PM<sub>10</sub> in 2000, 2008 and 2013 Dataset, V1*, Mendeley, London, UK, 2019.
  - [43] Facts and Details, *Malaysian Economy in the 1980s, 1990s and 2000s: Mahathir, the Asian Financial Crisis and after Mahathir*, Malaysia—Economics and Environmental Issues, Malaysia, 2015.
  - [44] Central Bank of Malaysia, *Economic Developments in 2008*, Central Bank of Malaysia, Kuala Lumpur, Malaysia, 2009.
  - [45] Department of Statistics Malaysia, *Monthly Manufacturing Statistics-December 2013*, Department of Statistics Malaysia, Putrajaya, Malaysia, 2014.
  - [46] A. Monteiro, M. Russo, C. Gama, M. Lopes, and C. Borrego, "How economic crisis influence air quality over Portugal (Lisbon and Porto)?" *Atmospheric Pollution Research*, vol. 9, no. 3, pp. 439–445, 2018.
  - [47] K. Y. Chay and M. Greenstone, *The Impact of Air Pollution on Infant Mortality: Evidence From Geographic Variation in Pollution Shocks Induced by a Recession*, Oxford University Press, Oxford, UK, 1999.
  - [48] K. Y. Chay and M. Greenstone, "The impact of air pollution on infant mortality: evidence from geographic variation in pollution shocks induced by a recession," *The Quarterly Journal of Economics*, vol. 118, no. 3, pp. 1121–1167, 2003.
  - [49] Department of Statistics Malaysia, *Population Distribution and Basic Demographic Characteristic Report*, Department of Statistics Malaysia, Putrajaya, Malaysia, 2010.
  - [50] X. An, Q. Hou, N. Li, and S. Zhai, "Assessment of human exposure level to PM<sub>10</sub> in China," *Atmospheric Environment*, vol. 70, pp. 376–386, 2013.
  - [51] Q. Hou, X. An, Y. Tao, and Z. Sun, "Assessment of resident's exposure level and health economic costs of PM<sub>10</sub> in Beijing from 2008 to 2012," *Science of The Total Environment*, vol. 563–564, pp. 557–565, 2016.
  - [52] W. Wang, T. Yu, P. Ciren, and P. Jiang, "Assessment of human health impact from PM 10 exposure in China based on satellite observations," *Journal of Applied Remote Sensing*, vol. 9, no. 1, Article ID 096027, 2015.
  - [53] H. Kharas, A. Zeufack, and H. Majeed, *Cities, People & the Economy a Study on Positioning Penang*, Khazanah Nasional Berhad, Kuala Lumpur, Malaysia, 2010.
  - [54] C. A. Pope, "Respiratory disease associated with community air pollution and a steel mill, Utah Valley," *American Journal of Public Health*, vol. 79, no. 5, pp. 623–628, 1989.
  - [55] J. F. Wang, M. G. Hu, C. D. Xu, G. Christakos, and Y. Zhao, "Estimation of citywide air pollution in Beijing," *PLoS One*, vol. 8, no. 1, pp. 1–6, 2013.
  - [56] Y. Hao, H. Flowers, M. M. Monti, and J. R. Qualters, "U.S. census unit population exposures to ambient air pollutants," *International Journal of Health Geographics*, vol. 11, no. 1, p. 3, 2012.
  - [57] S. N. Syed Abdul Mutalib, H. Juahir, A. Azid et al., "Spatial and temporal air quality pattern recognition using environmental techniques: a case study in Malaysia," *Environmental Science: Processes & Impacts*, vol. 15, no. 9, pp. 1717–1728, 2013.
  - [58] Department of Environment Malaysia, *Larangan Pembakaran Terbuka*, Ministry of Natural Resources & Environment, Putrajaya, Malaysia, 2007.
  - [59] ASEAN, "ASEAN Agreement on transboundary haze pollution," 2002, <http://haze.asean.org/asean-agreement-on-transboundary-haze-pollution-2/>.
  - [60] Department of Environment Malaysia, *Proactive Steps to Handle Haze*, Ministry of Natural Resources & Environment, Putrajaya, Malaysia, 2016.
  - [61] United States Environmental Protection Agency, "Clean air act overview," 2019, <https://www.epa.gov/clean-air-act-overview/progress-cleaning-air-and-improving-peoples-health#pollution>.
  - [62] N. Feng and S. A. Christopher, "Satellite and surface-based remote sensing of Southeast Asian aerosols and their radiative effects," *Atmospheric Research*, vol. 122, pp. 544–554, 2013.
  - [63] K. D. Kanniah, H. Q. Lim, D. G. Kaskaoutis, and A. P. Cracknell, "Investigating aerosol properties in Peninsular Malaysia via the synergy of satellite remote sensing and ground-based measurements," *Atmospheric Research*, vol. 138, pp. 223–239, 2014.