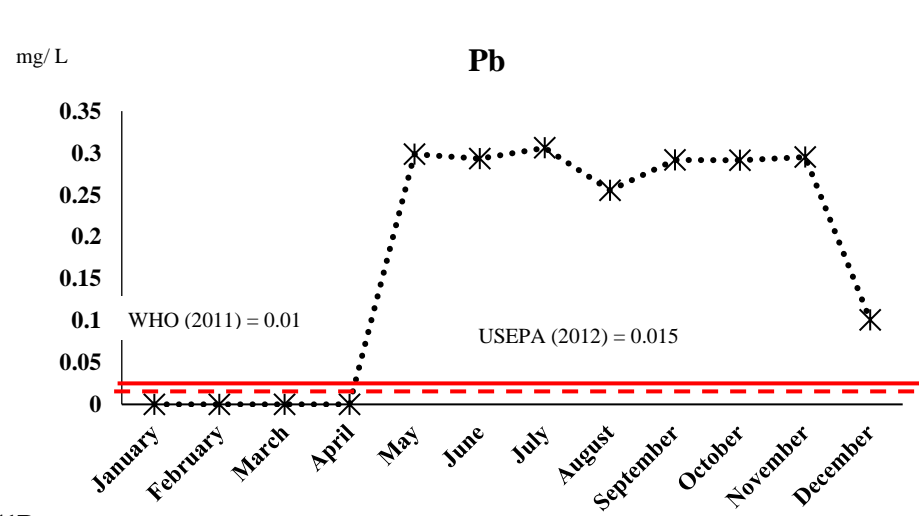
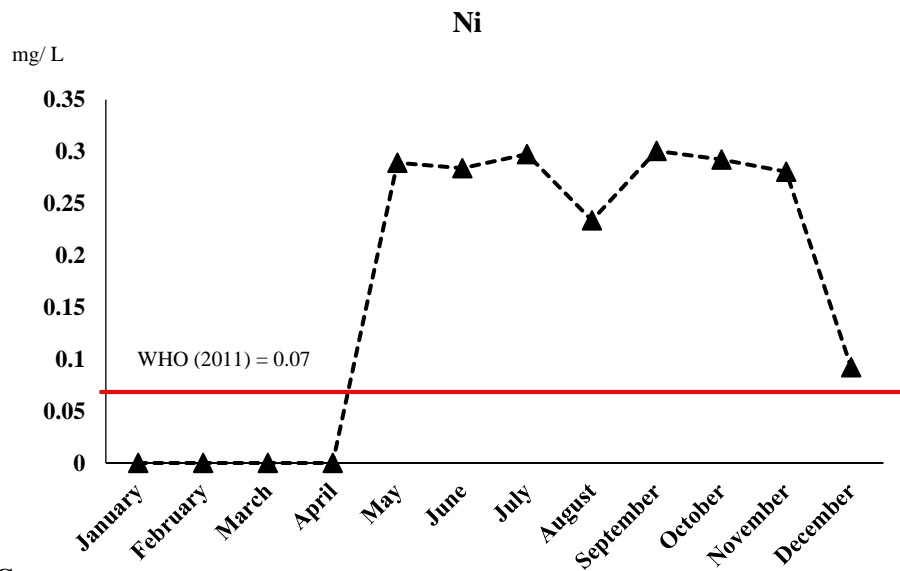


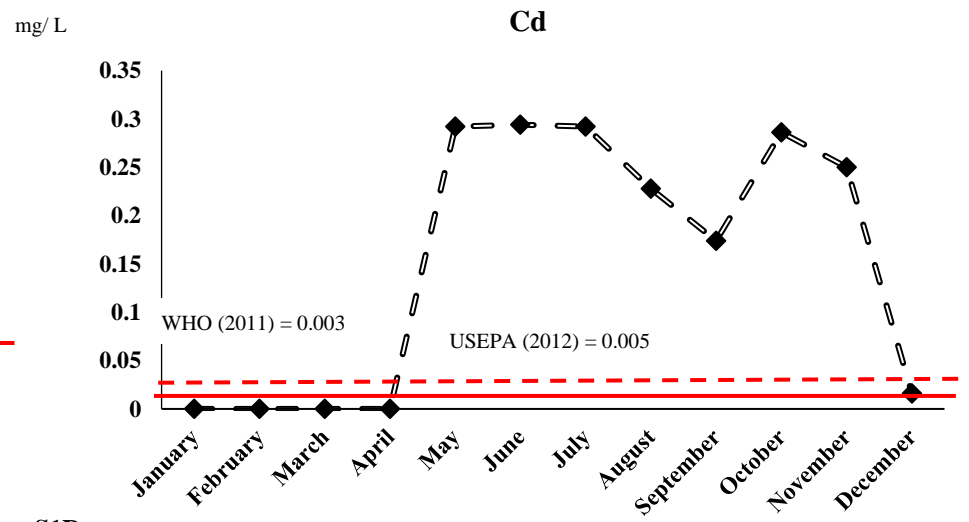
S1A



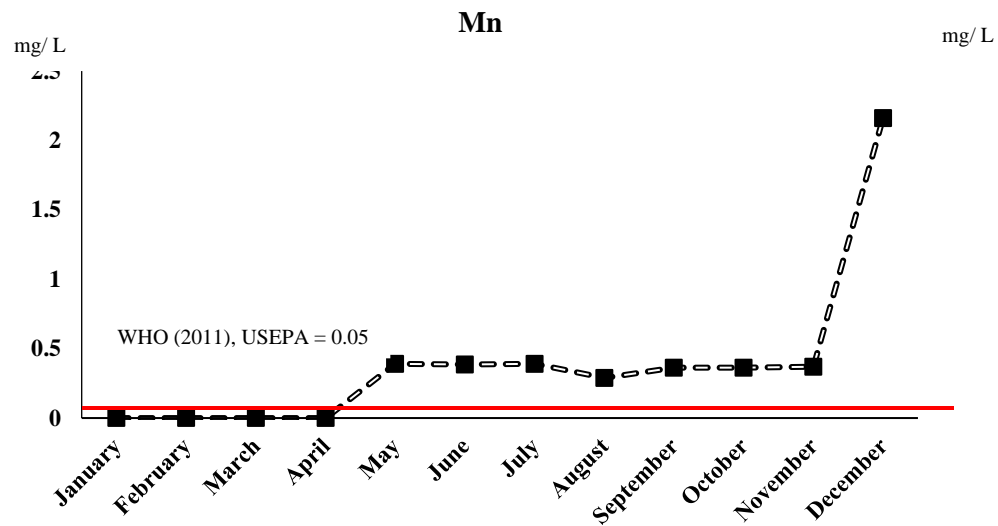
S1B



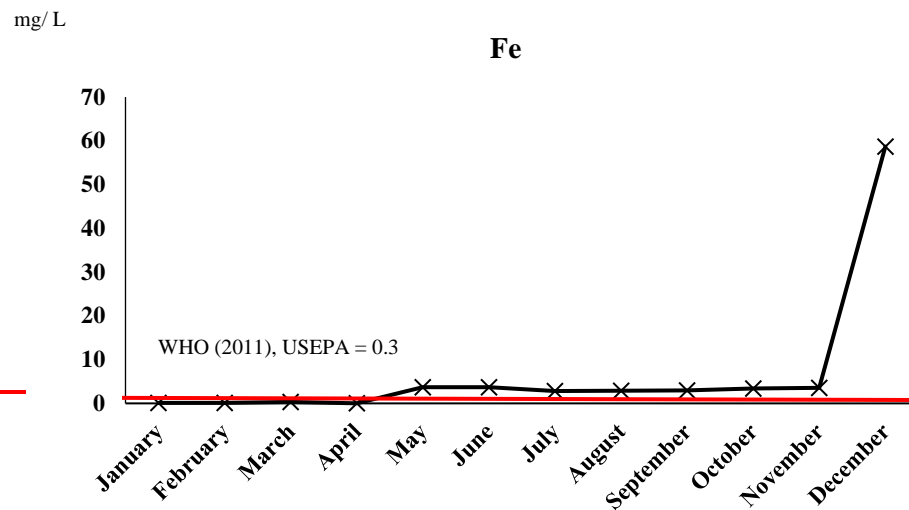
S1C



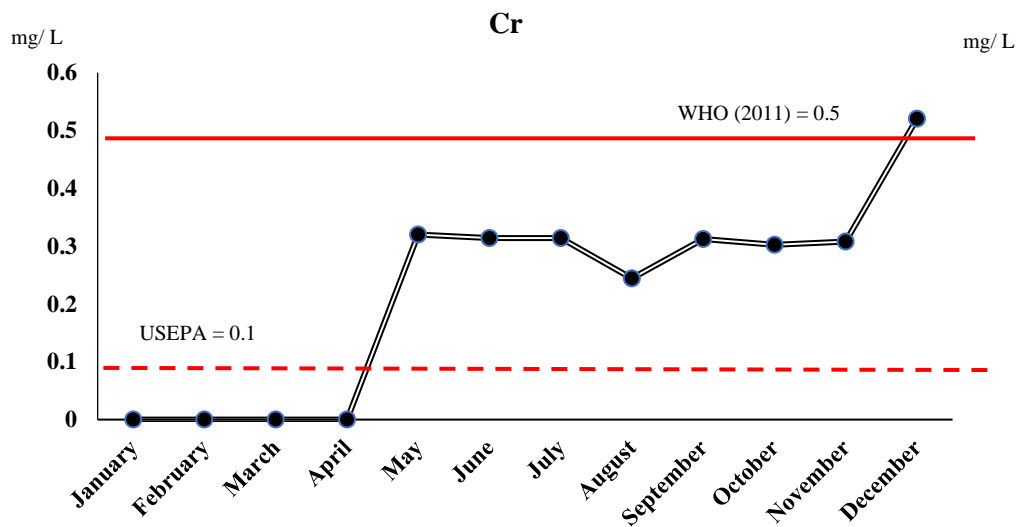
S1D



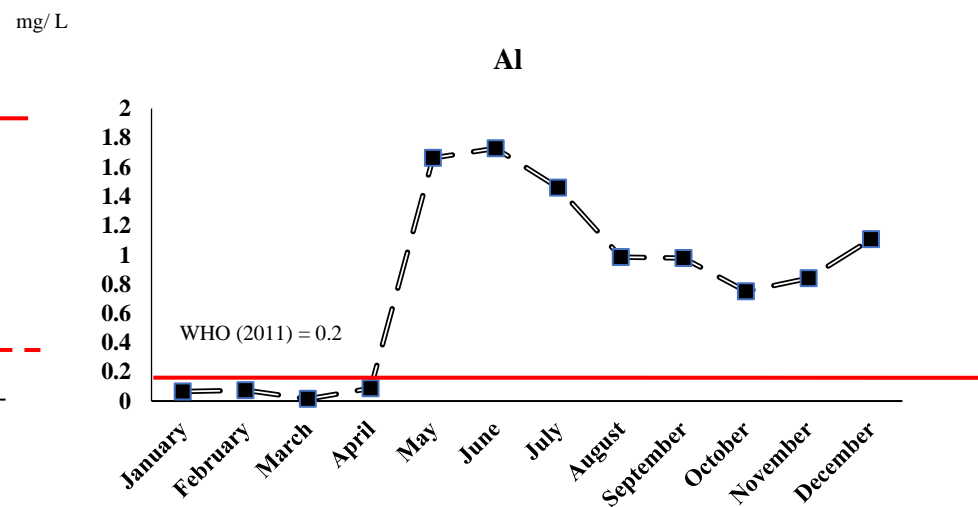
S1E



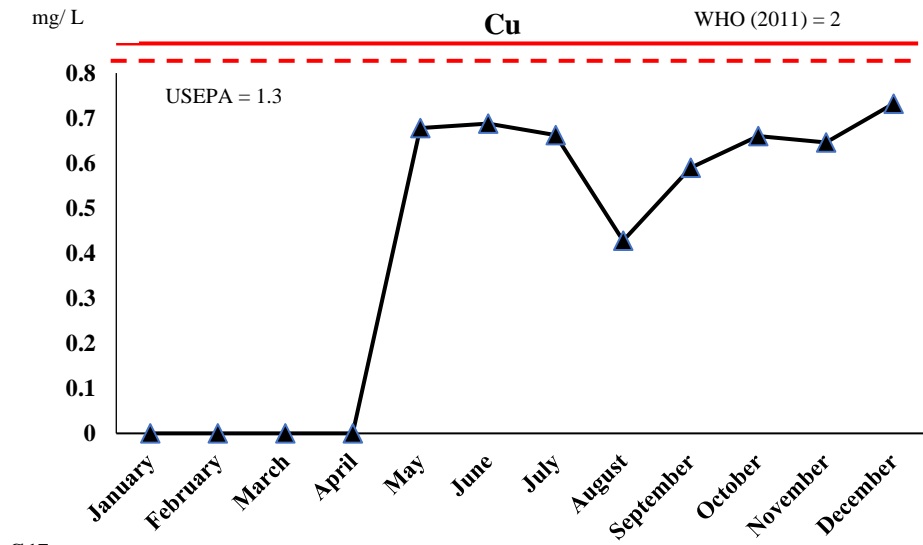
S1F



S1G

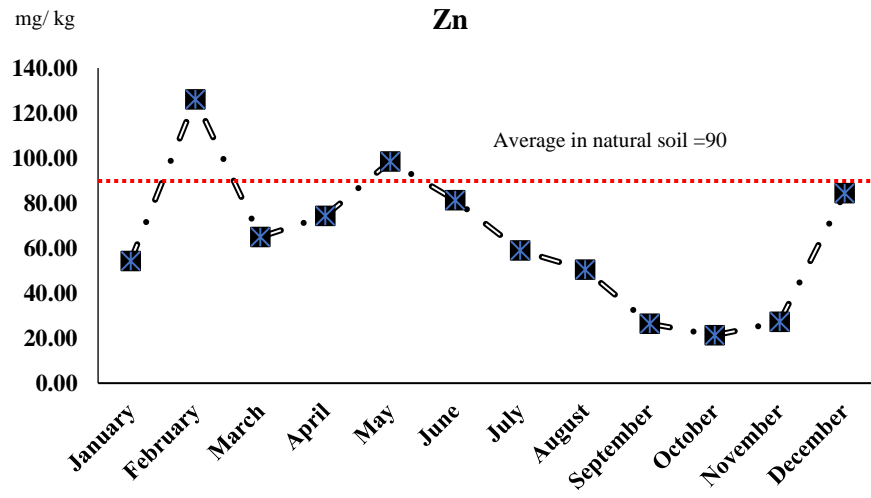


S1H

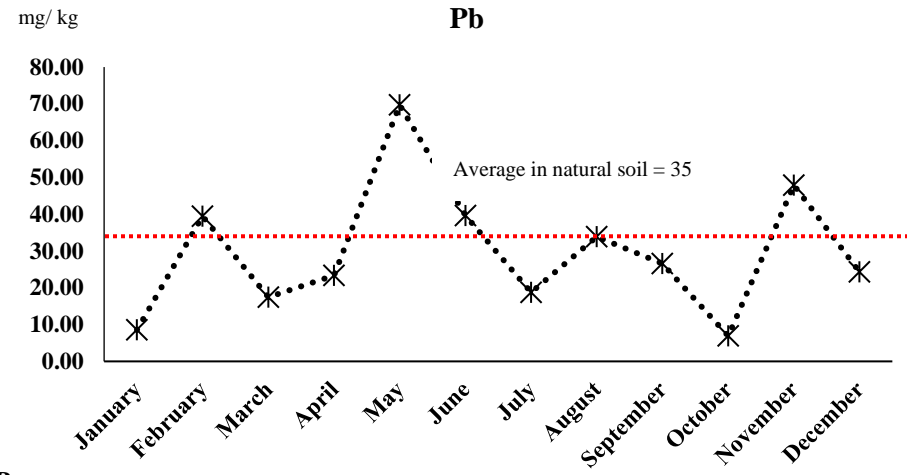


S11

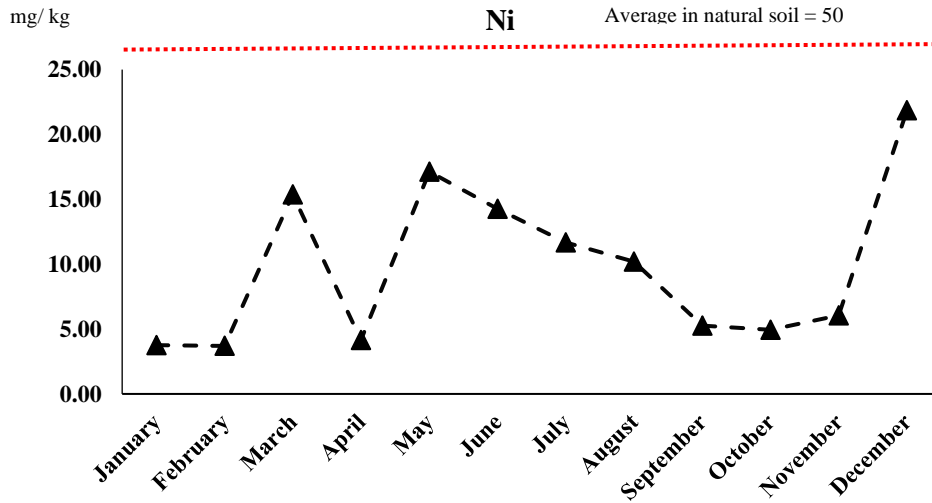
**Supplementary figure S1** The levels of Zn, Pb, Ni, Cd, Mn, Fe, Cr, Al, and Cu determined in groundwater compared with the WHO and USEPA standard limits.



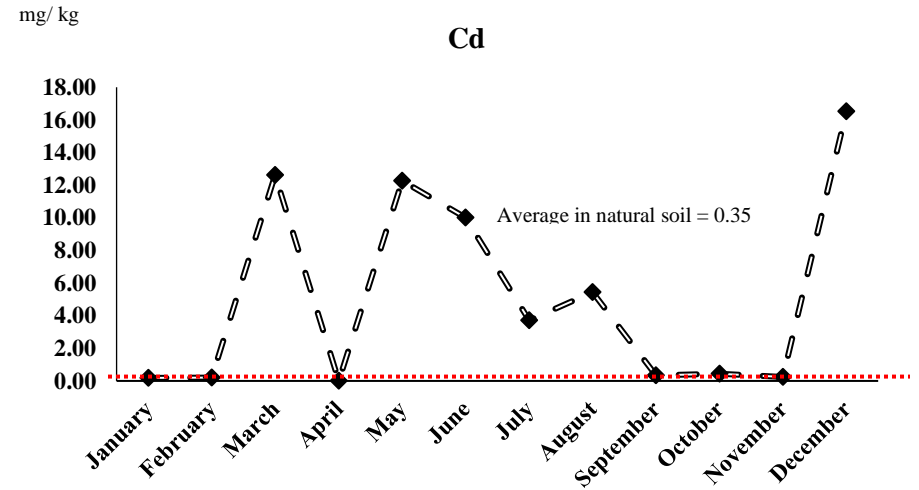
S2A



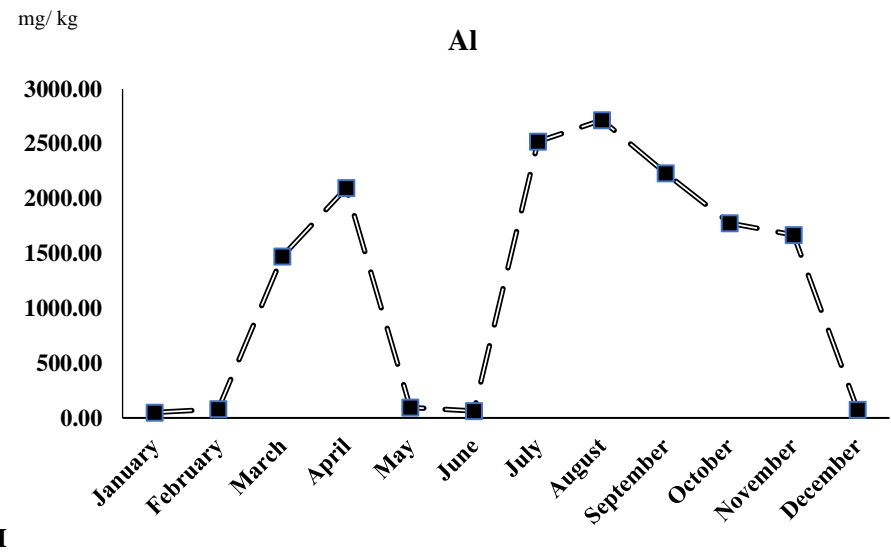
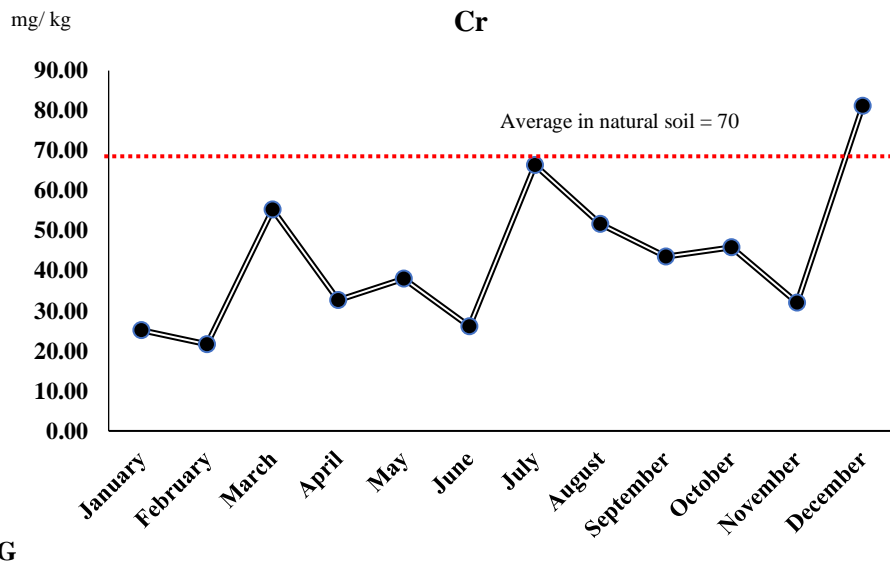
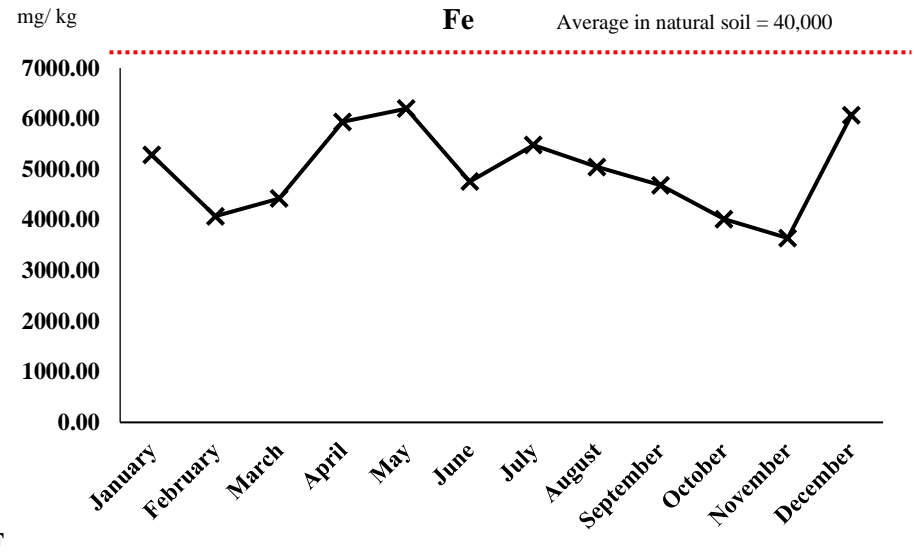
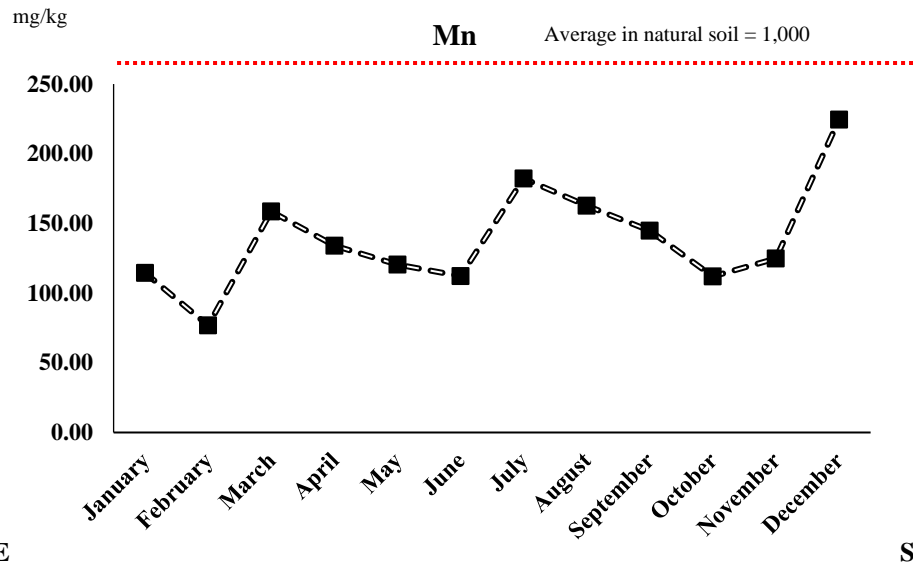
S2B

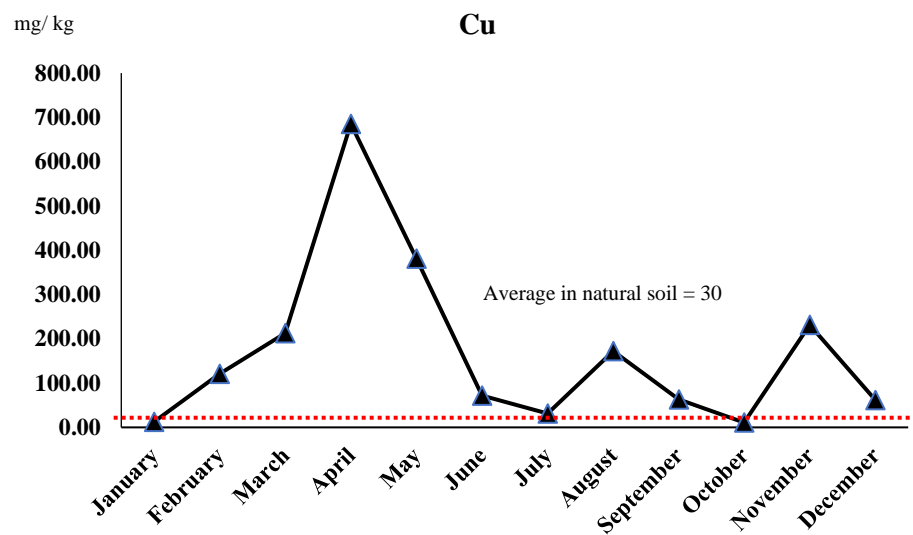


S2C



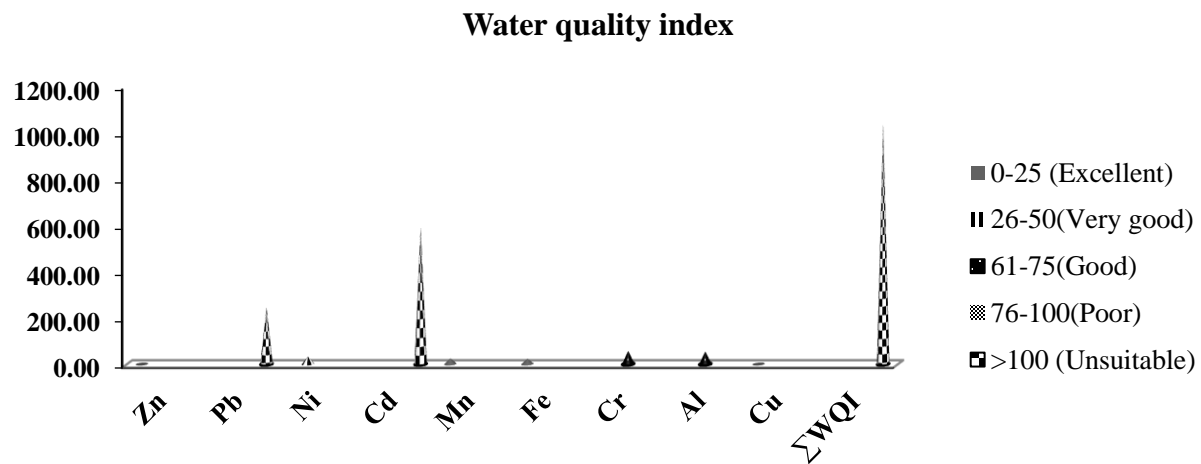
S2D





S2I

**Supplementary figure S2** The levels of Zn, Pb, Ni, Cd, Mn, Fe, Cr, Al, and Cu determined in the soil compared with natural soil standard limits



**Supplementary figure 3** The water quality index of Zn, Pb, Ni, Cd, Mn, Fe, Cr, Al, and Cu in the groundwater

