

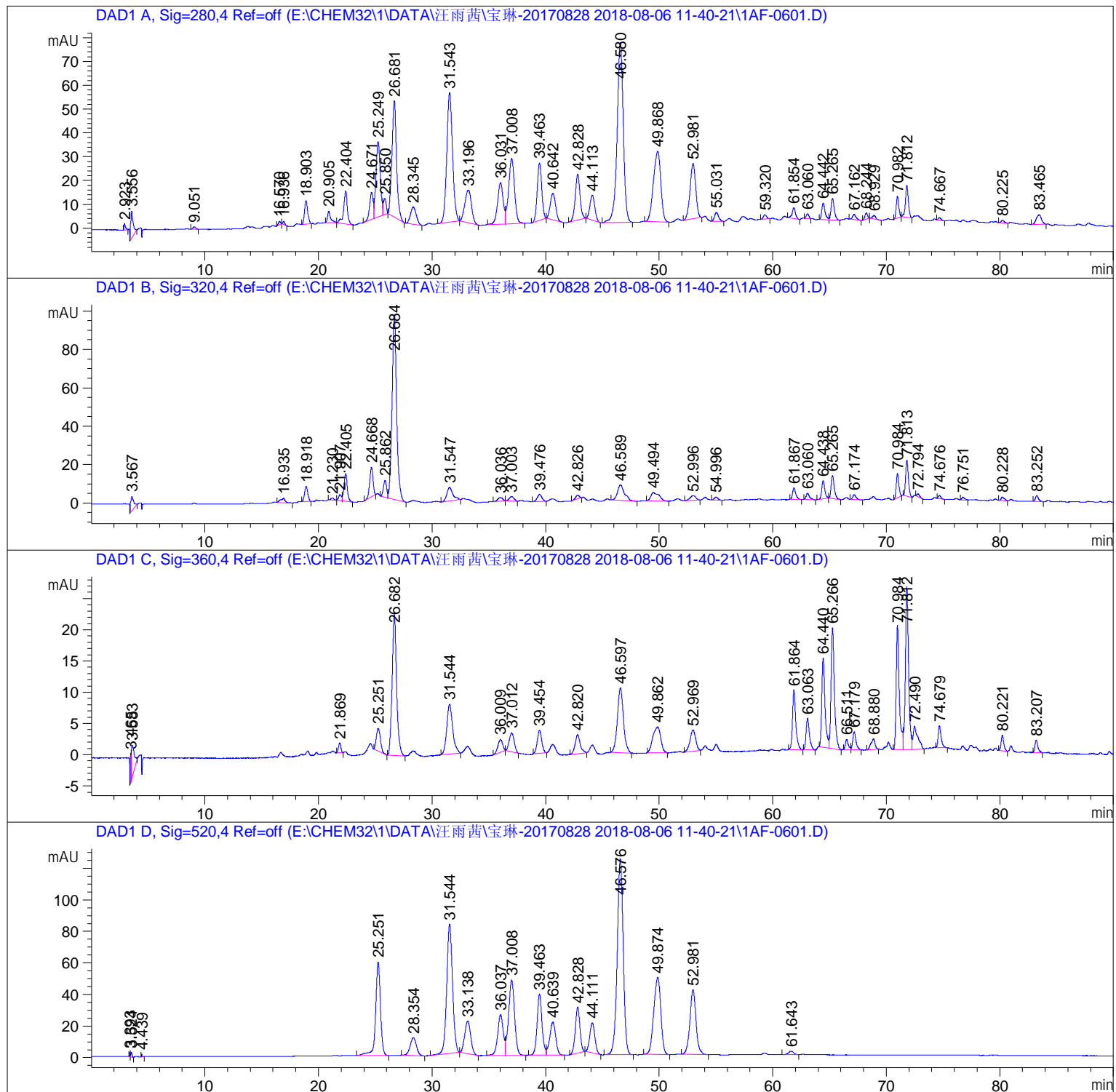
样品名称: 花青素

=====

操作者 : 系统 序列行 : 6
仪器 : 1200 位置 : P1-A-06
进样日期 : 2018-8-6 19:45:40 进样次数 : 1
进样量 : 10.000 µl

方法 : E:\CHEM32\1\DATA\汪雨茜\宝琳-20170828 2018-08-06 11-40-21\20180804-花青素-
XYP.M (序列方法)

最后修改 : 2018-8-6 11:40:21 : 系统



面积百分比报告

排序 : 信号
乘积因子 : 1.0000
稀释因子 : 1.0000
内标使用乘积因子和稀释因子

信号 1: DAD1 A, Sig=280,4 Ref=off

峰 #	保留时间 [min]	类型	峰宽 [min]	峰面积 [mAU*s]	峰高 [mAU]	峰面积 %
1	2.923	BB	0.1318	23.00185	2.53730	0.1446
2	3.556	BB	0.1993	173.67172	11.42789	1.0916
3	9.051	BB	0.2314	17.56735	1.09358	0.1104
4	16.570	BB	0.2122	18.11489	1.35335	0.1139
5	16.936	BB	0.1713	14.51836	1.29005	0.0913
6	18.903	BB	0.2928	193.39520	9.85957	1.2155
7	20.905	BB	0.2722	90.35609	4.83108	0.5679
8	22.404	BB	0.3336	310.68155	13.75161	1.9527
9	24.671	BV	0.3203	245.14032	11.42552	1.5408
10	25.249	VV	0.4080	846.23688	31.64238	5.3189
11	25.850	VB	0.2654	114.23219	6.68459	0.7180
12	26.681	BB	0.4112	1370.91296	48.88360	8.6166
13	28.345	BB	0.5031	258.70151	7.27151	1.6260
14	31.543	BB	0.5434	1917.03943	54.36290	12.0492
15	33.196	BB	0.5948	558.99640	13.85152	3.5135
16	36.031	BV	0.5114	601.28003	17.47573	3.7792
17	37.008	VB	0.5575	996.02557	27.44176	6.2603
18	39.463	BB	0.4270	665.76245	24.19561	4.1845
19	40.642	BB	0.4971	360.44302	11.09131	2.2655
20	42.828	BB	0.4399	563.30127	19.33580	3.5405
21	44.113	BB	0.4643	315.91815	10.52214	1.9856
22	46.580	BB	0.5760	2864.77295	75.62183	18.0060
23	49.868	BB	0.6646	1336.47729	29.61060	8.4002
24	52.981	BB	0.5324	809.70056	23.24393	5.0892
25	55.031	BB	0.3411	93.11752	3.70647	0.5853
26	59.320	BB	0.2982	36.60567	1.76329	0.2301
27	61.854	BB	0.2961	89.63194	4.46683	0.5634
28	63.060	BB	0.2357	30.28526	1.98809	0.1904
29	64.442	BV	0.3023	142.78413	6.99108	0.8974
30	65.265	VB	0.2945	177.60170	9.06644	1.1163
31	67.162	BB	0.2985	47.76793	2.24244	0.3002
32	68.244	BB	0.2406	43.27501	2.59438	0.2720
33	68.929	BB	0.2719	30.58233	1.51280	0.1922
34	70.982	BB	0.2428	143.77357	9.17514	0.9037
35	71.812	BB	0.2717	239.09454	13.42816	1.5028
36	74.667	BB	0.2296	18.55898	1.16681	0.1166
37	80.225	BB	0.2662	22.07813	1.16978	0.1388
38	83.465	BB	0.4215	128.74055	4.06541	0.8092

总量 : 1.59101e4 522.14226

样品名称: 花青素

信号 2: DAD1 B, Sig=320,4 Ref=off

峰 #	保留时间 [min]	类型	峰宽 [min]	峰面积 [mAU*s]	峰高 [mAU]	峰面积 %
1	3.567	BB	0.2296	134.25694	7.61755	2.0834
2	16.935	BB	0.3627	64.03332	2.31510	0.9937
3	18.918	BB	0.2986	157.89243	7.85125	2.4502
4	21.230	BB	0.2430	19.81412	1.13888	0.3075
5	21.907	BV	0.2480	53.01396	3.09307	0.8227
6	22.405	VB	0.2978	288.84680	14.41440	4.4824
7	24.668	BB	0.3165	315.69931	15.44618	4.8991
8	25.862	BV	0.2985	173.40851	8.77743	2.6910
9	26.684	VB	0.4099	2693.67773	96.43958	41.8012
10	31.547	BB	0.4981	258.81827	6.98813	4.0164
11	36.036	BB	0.3573	53.63493	1.88856	0.8323
12	37.003	BB	0.3630	67.62085	2.29973	1.0494
13	39.476	BB	0.3916	100.08637	3.60839	1.5532
14	42.826	BB	0.3098	45.00111	1.88967	0.6983
15	46.589	BB	0.5790	346.76819	8.14074	5.3812
16	49.494	BB	0.6446	221.67218	4.43915	3.4400
17	52.996	BB	0.4145	87.82835	2.53303	1.3629
18	54.996	BB	0.2986	37.52441	1.60599	0.5823
19	61.867	BB	0.2856	118.32905	6.06435	1.8363
20	63.060	BB	0.2962	68.43424	3.26986	1.0620
21	64.438	BB	0.2853	172.88036	9.28194	2.6828
22	65.265	BB	0.2902	227.06241	11.92204	3.5236
23	67.174	BB	0.2681	50.60162	2.61155	0.7852
24	70.984	BB	0.2455	200.57191	12.61346	3.1125
25	71.813	BB	0.2577	314.89163	18.77184	4.8866
26	72.794	BB	0.2451	23.01788	1.46659	0.3572
27	74.676	BB	0.2313	28.09658	1.80800	0.4360
28	76.751	BB	0.2557	26.06851	1.46394	0.4045
29	80.228	BB	0.2827	37.01687	1.87195	0.5744
30	83.252	BB	0.2818	57.45201	3.04916	0.8916

总量 : 6444.02085 264.68151

信号 3: DAD1 C, Sig=360,4 Ref=off

峰 #	保留时间 [min]	类型	峰宽 [min]	峰面积 [mAU*s]	峰高 [mAU]	峰面积 %
1	3.465	BV	0.0687	20.62927	4.74671	0.4655
2	3.583	VB	0.2169	88.77634	5.26060	2.0033
3	21.869	BB	0.2191	24.31742	1.60236	0.5487
4	25.251	BB	0.3195	91.41426	3.63415	2.0628
5	26.682	BB	0.3992	620.49915	22.53778	14.0020
6	31.544	BB	0.4758	290.39883	7.99395	6.5530
7	36.009	BB	0.3518	58.46284	2.04341	1.3193
8	37.012	BB	0.3738	93.13936	3.03677	2.1018
9	39.454	BB	0.3375	101.17525	3.69494	2.2831
10	42.820	BB	0.3788	96.61784	3.03962	2.1802
11	46.597	BB	0.5290	387.70285	10.34990	8.7488

样品名称：花青素

峰 #	保留时间 [min]	类型	峰宽 [min]	峰面积 [mAU*s]	峰高 [mAU]	峰面积 %
12	49.862	BB	0.5661	198.57330	4.18109	4.4809
13	52.969	BB	0.4308	117.25616	3.41337	2.6460
14	61.864	BB	0.2891	191.85701	9.60152	4.3294
15	63.063	BB	0.2968	103.56345	5.01708	2.3370
16	64.440	BV	0.3027	285.12756	14.29618	6.4341
17	65.266	VB	0.3005	391.54297	19.31727	8.8354
18	66.511	BV	0.2353	29.66137	1.62238	0.6693
19	67.179	VB	0.2791	57.09162	2.90722	1.2883
20	68.880	BB	0.3122	43.80741	1.74920	0.9885
21	70.984	BV	0.2797	382.66269	19.95837	8.6350
22	71.812	VV	0.2887	507.48260	26.11895	11.4517
23	72.490	VB	0.3900	108.15443	3.68981	2.4406
24	74.679	BB	0.2657	63.41622	3.49408	1.4310
25	80.221	BB	0.2413	41.91380	2.50416	0.9458
26	83.207	BB	0.2469	36.27024	2.02570	0.8185

总量：4431.51425 187.83659

信号 4: DAD1 D, Sig=520,4 Ref=off

峰 #	保留时间 [min]	类型	峰宽 [min]	峰面积 [mAU*s]	峰高 [mAU]	峰面积 %
1	3.393	BV	0.0489	8.84768	2.79824	0.0438
2	3.524	VB	0.1083	21.35385	2.95601	0.1056
3	4.439	BB	0.0632	7.08294	1.67943	0.0350
4	25.251	BB	0.4537	1778.62756	59.33470	8.7963
5	28.354	BB	0.5731	439.34497	11.36317	2.1728
6	31.544	BB	0.5464	2921.73901	81.85928	14.4495
7	33.138	BB	0.5563	767.98438	20.82179	3.7981
8	36.037	BV	0.5067	883.75970	25.85763	4.3707
9	37.008	VB	0.5601	1750.22583	47.69729	8.6558
10	39.463	BV	0.4534	1168.33398	38.78847	5.7780
11	40.639	VB	0.5437	768.59528	20.96746	3.8011
12	42.828	BB	0.4309	823.32532	29.20364	4.0718
13	44.111	BB	0.4760	596.16901	19.10816	2.9484
14	46.576	BB	0.5638	4563.08789	124.44386	22.5669
15	49.874	BB	0.6936	2116.60815	49.03656	10.4677
16	52.981	BB	0.5662	1533.73206	41.01914	7.5851
17	61.643	BB	0.3913	71.46072	2.26966	0.3534

总量：2.02203e4 579.20450

*** 报告结束 ***