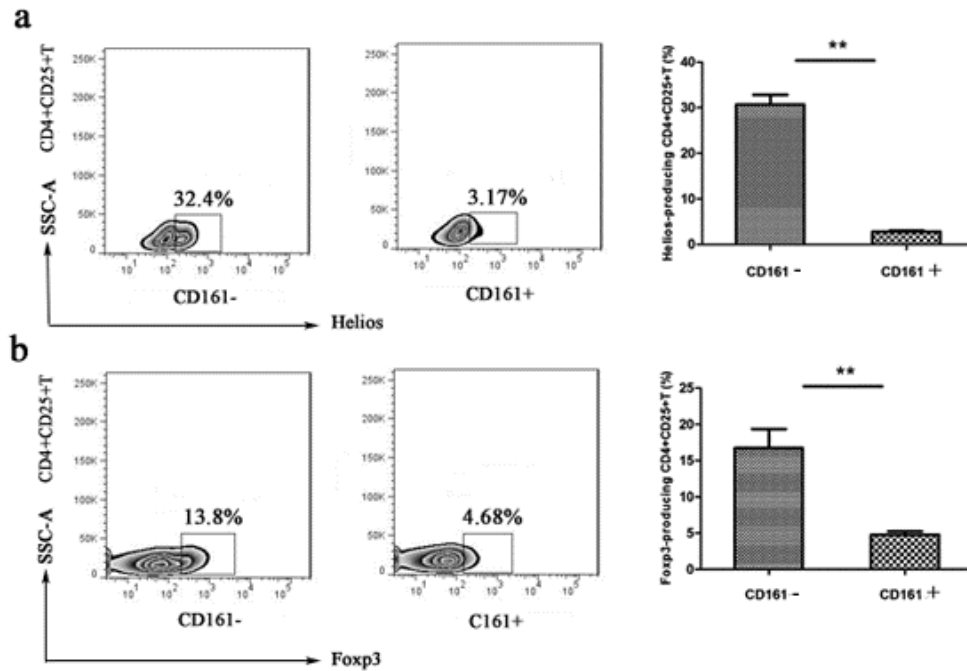


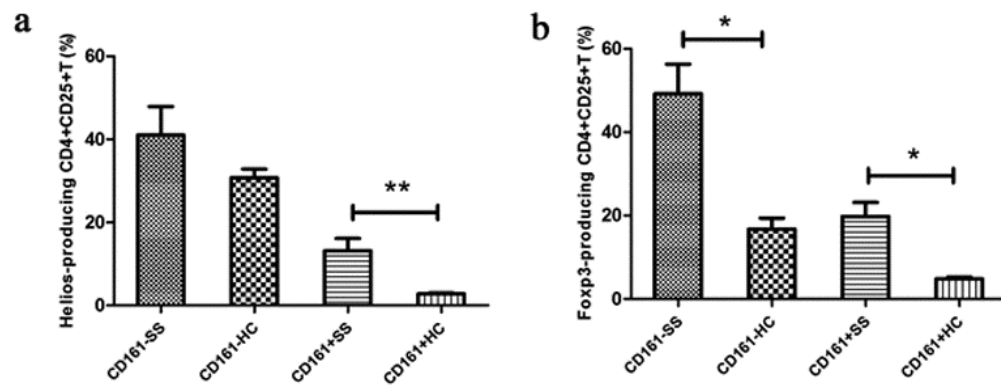
Supplementary Data

Table S1 Hb of pSS patients with the elevated or normal percentages of circulating CD4+CD161+ T cell subsets.

Character-istics	CD4+CD25+ CD161+T (%)		<i>p</i> value	CD4+CD25- CD161+T (%)		<i>p</i> value	CD4+CD161+T (%)		<i>p</i> value
	≤6.70	>6.70		≤17.79	>17.79		≤17.66	>17.66	
Hb	128.5± 19.98	119.3± 15.96	0.2780	124.7± 17.48	116.2± 15.43	0.0428	122.1± 19.57	119.8± 12.41	0.3422



Supplementary Fig.1 Foxp3 and Helios expression of the CD4+CD25+ CD161+ T cell subsets in HCs. Representative flow cytometric plots of transcription factors production in CD161+ or CD161- T cell subsets were shown. Frequencies of Foxp3-producing or Helios-producing cells in CD161+ and CD161- fractions in HCs (n=5) were compared. ** $p < 0.01$



Supplementary Fig.2 Foxp3 and Helios expression of the CD4+CD25+ CD161+ T cell subsets in pSS and HCs. Percentages of Foxp3 producing or Helios producing cells in CD161+ and CD161- fractions in HCs (n=5) were compared. * $p < 0.05$, ** $p < 0.01$.