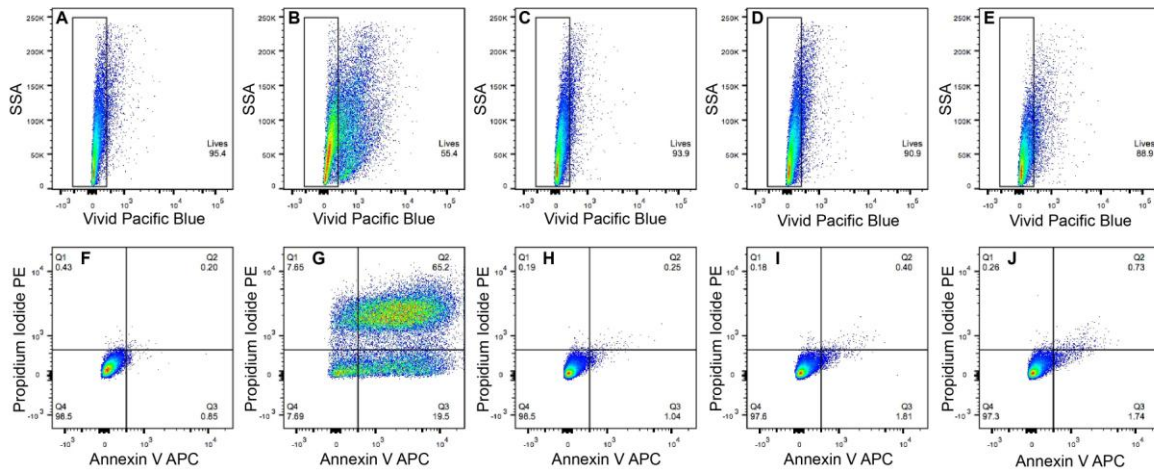


Supplementary figure 1



Supplementary figure 1. Chloroquine did not affect the viability or induce apoptosis in HEK-TLR cells. HEK-TLR cells alone (A) and cells with 510 nM dexamethasone (B) or with 0.05 (C), 0.1 (D) or 0.5 (E) mM CQ were stained with ViViD to analyze their viability by flow cytometry. Cells alone (F) and cells with 510 nM dexamethasone (G) or with 0.05 (H), 0.1 (I) or 0.5 (J) mM CQ were stained with annexin V and propidium iodide to analyze apoptosis by flow cytometry.