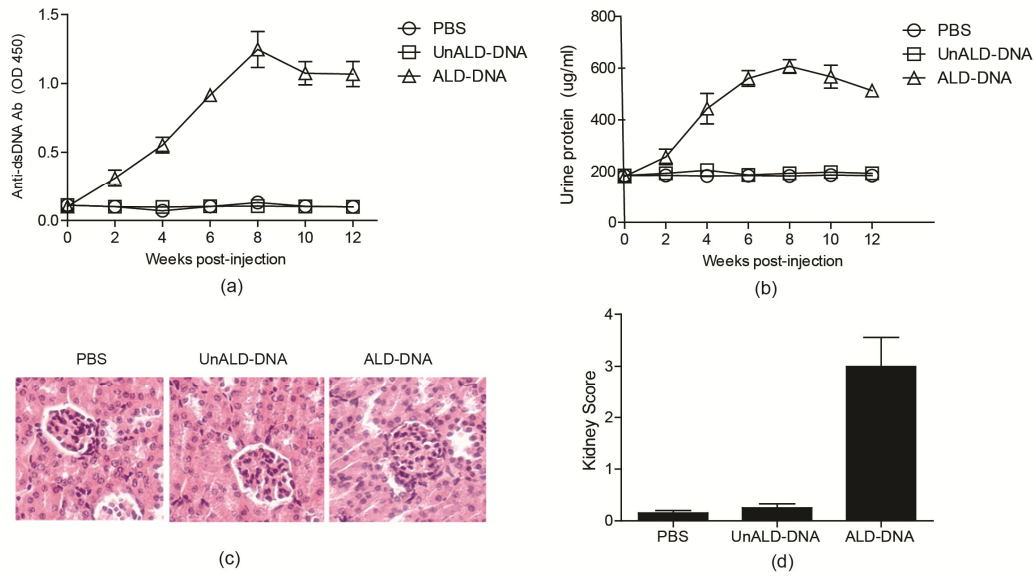


## Supplementary Information



**Figure S1 ALD-DNA immunization induces SLE syndrome.** (a) Serum anti-dsDNA IgG levels were measured by ELISA every 2 weeks after initial injection. Data are means  $\pm$  SD from 8 mice in each group. (b) Urine protein levels of the mice were assessed by BCA Protein Assay Kit every 2 weeks. Data are means  $\pm$  SD from 8 mice in each group. (c) Nephritic pathology was evaluated by H&E staining of renal tissues. Images (magnification  $\times 200$ ) are representative of 8 mice in each group. (d) The kidney score was assessed using paraffin sections stained with H&E in (c). n=8.