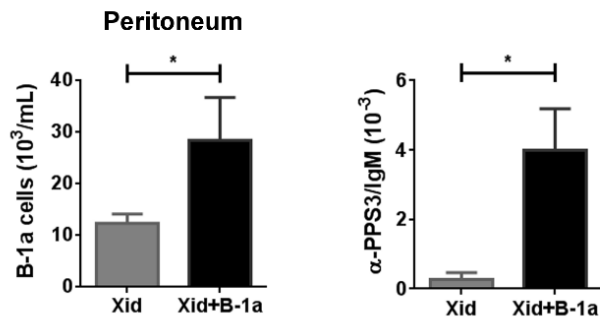
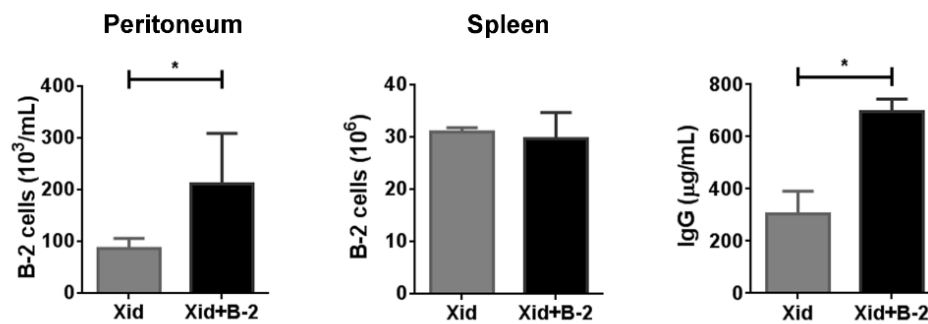


(A)



(B)



Supplementary Figure 1. Evaluation of B cell reconstitution and functionality after transfer to BALB/Xid mice. (A) Flow cytometer evaluation of the number of peritoneal B-1a cells and determination by ELISA of frequency of IgM anti-PPS3 antibodies among the total serum IgM pool after B-1a cells transfer to BALB/Xid mice. (B) Flow cytometer evaluation of the number of peritoneal and splenic B-2 cells, and determination by ELISA of total amount of IgG in mice serum after B-2 cells transfer to BALB/Xid mice. B cells population were measured three days after reconstitution while antibody responses were measured at the end of immunization protocol (52 days after reconstitution). Columns represent means \pm SD of the values obtained in triplicate, * $p < 0.05$, Mann-Whitney U test.