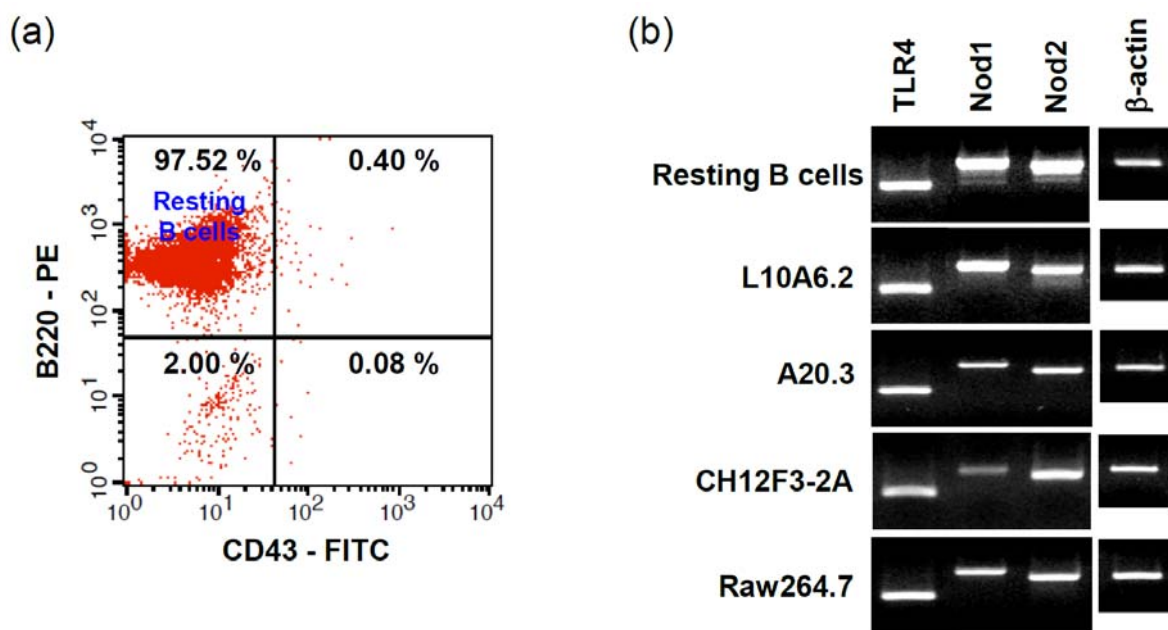


## Supplementary Materials

SUPPLEMENTARY TABLE 1: RT-PCR primers

Primer (product size)	Sequence
TLR4 (249 bp)	Forward: 5'-CTGGGTGAGAAATGAGCTGG-3' Reverse: 5'-CTGGGTGAGAAATGAGCTGG-3'
Nod1 (547 bp)	Forward: 5'-AGCTGCAGCCTTGCTTTAGCC-3' Reverse: 5'-TCAGCCATAAATGCCGTAGCG-3'
Nod2 (476 bp)	Forward: 5'-CCGAAGCCCTAGCACTGATGC-3' Reverse: 5'-CAACCATCACGACTCCTCGGG-3'
GLT $\gamma$ 2b (318 bp)	Forward: 5'-GGGAGAGCACTGGGCCTT-3' Reverse: 5'-AGTCACTGACTCAGGGAA-3'
GLT $\gamma$ 3 (349 bp)	Forward: 5'-CAAGTGGATCTGAACACA-3' Reverse: 5'-GGCTCCATAGTTCCATT-3'
GLT $\gamma$ 1 (532 bp)	Forward: 5'-CAGCCTGGTGTCAACTAG-3' Reverse: 5'-CTGTACATATGCAAGGCT-3'
AID (405 bp)	Forward: 5'-CCTCCTGCTCACTGGACTTC-3' Reverse: 5'-GTCTGGTTAGCCGGACAGAA-3'
$\beta$ -actin (318 bp)	Forward: 5'-CATGTTTGAGACCTTCAACACCCC-3' Reverse: 5'-GCCATCTCCTGCTCGAAGTCTAG-3'



SUPPLEMENTARY FIGURE 1: Purity of resting B cells and expression of TLR4, Nod1, and Nod2 in the resting B cells. (a) Purity of isolated mouse spleen resting B cells ( $CD43^- B220^+$ ) was measured using flow cytometric analysis. (b) Total RNA was isolated from the resting B cells and the indicated cell lines. The levels of TLR4, Nod1, and Nod2 mRNA were measured by RT-PCR.