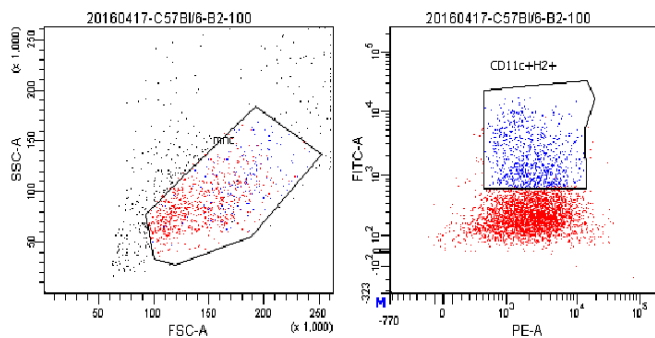


B.



**Supplement 1. Assessment of the effect of time of addition of BAY 11-7082 to cultures of induced DCs on the frequency of CD11c+H-2b+ cells.**

Note: A — analysis of FSC and SSC distribution of events and the frequency of CD11c+H-2b+ bone marrow cells, when adding BAY 11-7082 on day 0 of culture in the presence of GM-CSF and IL-4; B — Analysis of FSC and SSC distribution of events and the content of CD11c+H-2b+ BMCs, when adding BAY 11-7082 on day 2 of culture in the presence of GM-CSF and IL-4.