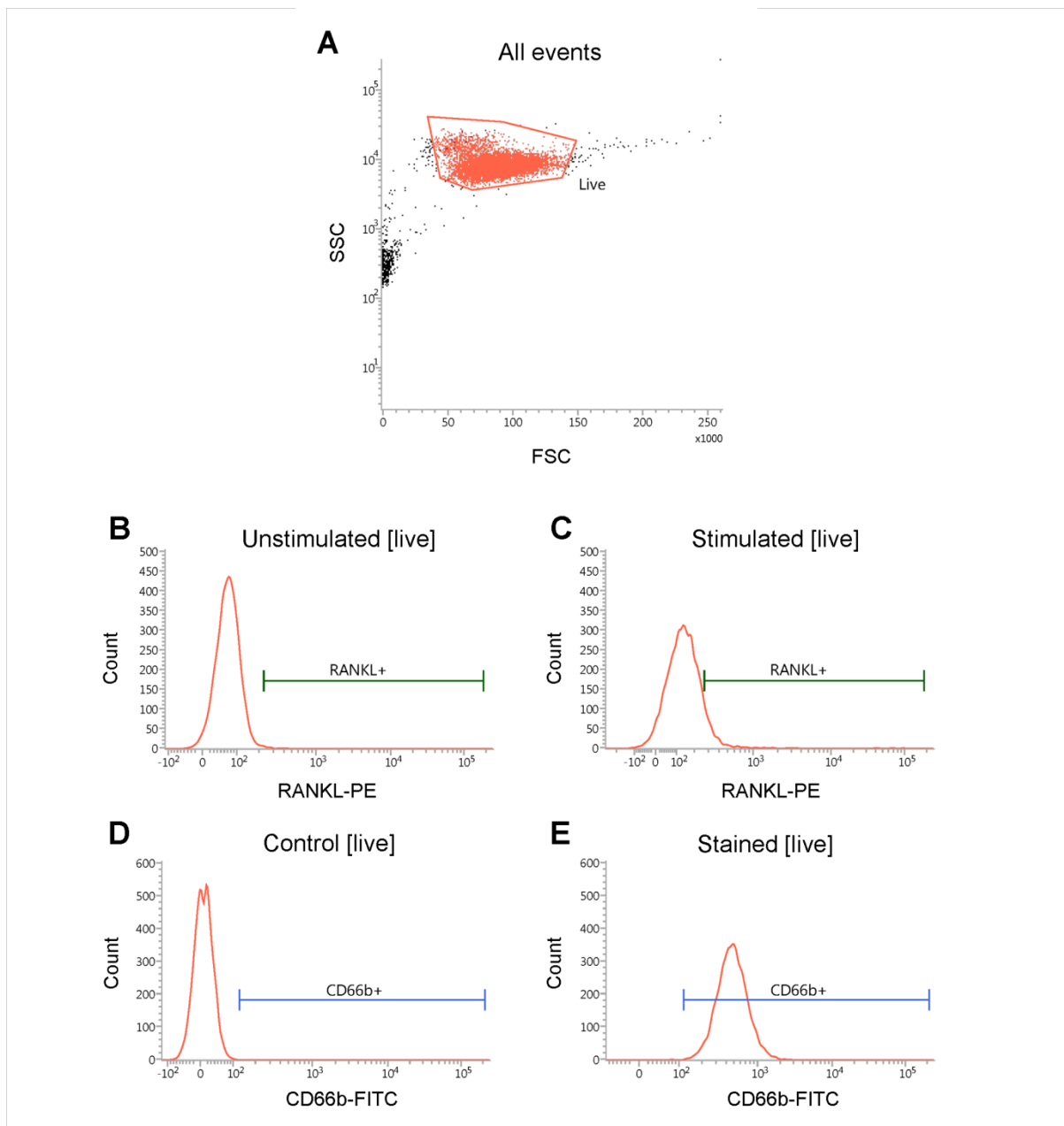


Supplementary data



Supplementary Figure 1: Gating strategy for flow cytometry experiments. The antibody combination for flow cytometric experiments was anti-RANKL-PE/CD66b-FITC. Acquisition and analysis were performed on a BD FACSverse flow cytometer using associated FACSuite software. The gating tree was set as follows: **(A)** forward scatter/sideward scatter representing the distribution of cells in the light scatter based on size and intracellular composition, respectively, where the live population is encircled in red. In the [live] population, **(B,C)** RANKL, **(D,E)** CD66b+ cells were identified. **(A)** The RANKL+ gating (green) was set in unstimulated cPMN samples. **(D)** The CD66b+ gating (blue) was set in unstained cPMN samples. Here, representative plots of unstimulated **(B)** and stimulated **(C, D, E)** cPMNs are shown.