

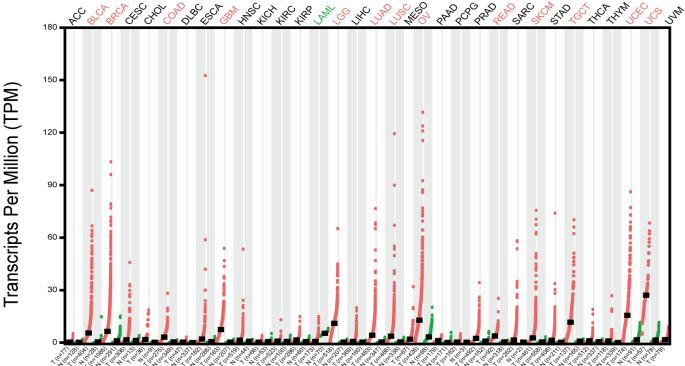
a

Disease Summary for MEX3A

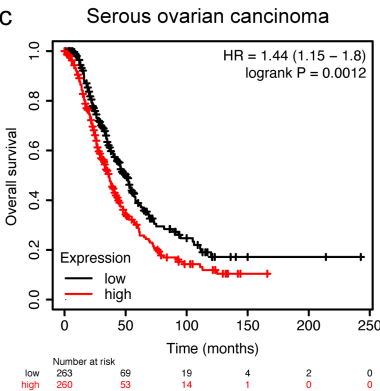
Analysis Type by Cancer	Cancer vs. Normal	
Bladder Cancer		
Brain and CNS Cancer	4	1
Breast Cancer	4	
Cervical Cancer		
Colorectal Cancer	4	
Esophageal Cancer		
Gastric Cancer		
Head and Neck Cancer		
Kidney Cancer	1	
Leukemia		
Liver Cancer		
Lung Cancer	1	
Lymphoma		
Melanoma	1	
Myeloma		
Other Cancer	4	
Ovarian Cancer	2	
Pancreatic Cancer		1
Prostate Cancer	1	
Sarcoma		
Significant Unique Analyses	22	2
Total Unique Analyses	241	



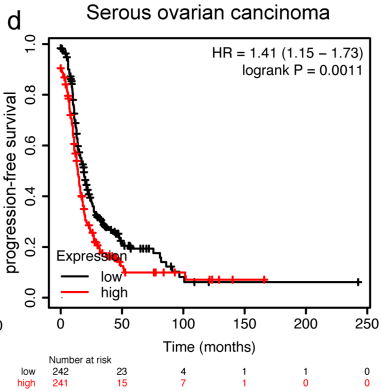
b



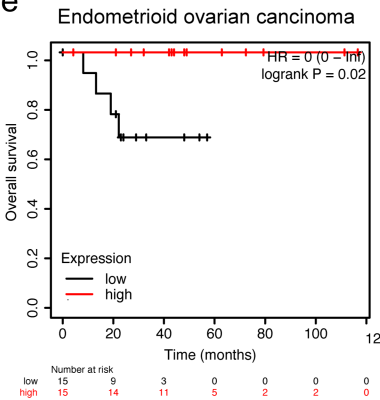
c



d



e



f

