

Research Article

METTL3 Intensifies the Progress of Oral Squamous Cell Carcinoma via Modulating the m6A Amount of PRMT5 and PD-L1

Yilong Ai ¹, Shiwei Liu,² Hailing Luo,¹ Siyuan Wu,¹ Haigang Wei,¹ Zhe Tang,¹ Xia Li ¹, Xiaozhi Lv ³ and Chen Zou ¹

¹Foshan Stomatological Hospital, School of Stomatology and Medicine, Foshan University, Foshan, Guangdong, China

²Department of Stomatology, Foshan First People's Hospital, Foshan, Guangdong, China

³Department of Oral & Maxillofacial Surgery, Nanfang Hospital, Southern Medical University, Guangzhou, Guangdong, China

Correspondence should be addressed to Xiaozhi Lv; lxzsurgeon@126.com and Chen Zou; chilli_62@163.com

Received 20 April 2021; Revised 26 July 2021; Accepted 2 August 2021; Published 24 August 2021

Academic Editor: Sainan Li

Copyright © 2021 Yilong Ai et al. This is an open access article distributed under the Creative Commons Attribution License, which permits unrestricted use, distribution, and reproduction in any medium, provided the original work is properly cited.

N6-Methyladenosine (m6A) modification is one of the commonest chemical modifications in eukaryotic mRNAs, which has essential effects on mRNA translation, splicing, and stability. Currently, there is a rising concern on the regulatory role of m6A in tumorigenesis. As a known component in the m6A methyltransferase complex, METTL3 (methyltransferase-like 3) plays an essential role in m6A methylation. Till now, the functions of METTL3 in oral squamous cell carcinoma (OSCC) and its relative mechanism remain to be explored. In this research, through the GEPIA database, we found that high METTL3 expression has a correlation with poor prognosis of squamous cell carcinoma of head and neck. qRT-PCR displayed that METTL3 was highly expressed in OSCC cells. Functionally, METTL3 knockdown reduced the invasion, migration, and proliferation competence of OSCC cells and attenuated the activation of CD8+ T cells. In contrast, METTL3 overexpression resulted in opposite results. GEPIA, UALCAN, and SRAMP databases, PCR, western blot, and m6A RNA methylation assay confirmed the m6A modification of PRMT5 and PD-L1 mediated by METTL3. In conclusion, our results displayed that METTL3 intensified the metastasis and proliferation of OSCC by modulating the m6A amounts of PRMT5 and PD-L1, suggesting that METTL3 may be a therapeutic target for OSCC patients.

1. Introduction

Oral squamous cell carcinoma (OSCC) is the commonest head and neck malignancy and responsible for approximately 90% of malignant epithelial tumors in the oral and maxillofacial region [1–4]. Over the years, comprehensive treatments, which include radiotherapy, chemotherapy, and surgical treatment, have made progress, but poor prognosis remains in OSCC patients, and the 5-year survival rate is roughly 60 [5–9]. Hence, a key to invent effective targeted therapies and improve patient prognosis is uncovering the molecular mechanisms underneath OSCC invasion and metastasis. Recently, it was identified that many genetic and epigenetic changes have a correlation with the progress of

OSCC. However, there are not many studies focusing on the m6A methylation modification and OSCC.

N6-Methyladenosine (m6A) is an important RNA modification, and it is a reversible behavior catalyzed by methyltransferase complexes (m6A “writers”), demethylated transferases (m6A “erasers”), and binding proteins (m6A “readers”) [10, 11]. Methyltransferase complexes include METTL14, KIAA1429, WTAP, and METTL3 [12, 13]. m6A exerts a crucial regulatory influence in biological functions and is involved in various pathological and physiological processes [14]. The amount of m6A will influence the RNA metabolism such as the processing or translation of the modified RNA and degradation of mRNA. Its aberrant variation will result in attenuating the modulation of gene expression

and intensifying the emergence of abnormal cell behavior [15, 16]. m6A enzyme system aberrant expression can be an essential influence attenuating the enrichment of m6A, consequently attenuating the expression of oncogenes or tumor suppressor genes in diverse cancers [17–19]. Countless studies have demonstrated that abnormal m6A RNA methylation exerts an essential influence in the pathogenesis of many human disorders including OSCC [14, 20, 21].

METTL3 is one of the most important proteins in the m6A methyltransferase complex, which is mainly responsible for catalyzing the m6A modification of RNA molecules on N6-methyladenine [22, 23]. The deletion or abnormal expression of METTL3 will affect the level of m6A of intracellular RNA and then affect the degradation and translation of mRNA and the generation of microRNA, which may lead to the occurrence of human diseases [24, 25]. Therefore, intracellular stabilization of METTL3 is important for the regulation of RNA m6A amounts. METTL3 is highly expressed in most human cancers, and we found through the GEPIA database (<http://gepia.cancer-pku.cn/index.html>) that METTL3 has a close relation with the prognosis of squamous cell carcinoma of head and neck. The low expression of METTL3 predicts a high free survival of disease of head and neck squamous cell carcinoma. OSCC is the commonest head and neck malignancy. Therefore, this research probed the role and clinical effect of METTL3 in OSCC.

In this study, we evaluated the function of METTL3 in OSCC and probed into the mechanism of METTL3's involvement in OSCC.

2. Materials and Methods

2.1. Cell Culture and Transfection. We purchased oral squamous cell lines SCC-4, CAL-27, SCC-9, and SCC-25 from ATCC (Manassas VA, USA). We obtained healthy oral keratinocytes (HOK) from the cell bank of the Chinese Academy of Sciences (Shanghai, China). We cultured SCC-4, CAL-27, SCC-9, and SCC-25 cells in DMEM/F12, which is supplemented with 10% fetal bovine serum (FBS) and 1% penicillin-streptomycin. We cultured HOK cells with RPMI 1640 medium, which contains 15% FBS and 1% antibiotics. We cultured all of the cells at 37°C in a 5% CO₂ incubator.

To knock down METTL3 and PRMT5, lentivirus constructs were generated. The OSCC cells were infected stably with METTL3-knockdown lentivirus (sh-METTL3#1, sh-METTL3#2), PRMT5-knockdown lentivirus (sh-PRMT5), and pLKDCMV-G&PR-U6 negative control vectors (sh-NC), following the manufacturer's instructions (OBio Technology, China). The OSCC cells were stably transfected with pLenti-CMV-3FLAG negative control vectors (vector) and overexpression lentivirus (METTL3 OE). Cells were selected for 14 days. For METTL3 knockdown, the construct sh-METTL3#1 with the highest efficiency was utilized for a mechanism study, which was named after sh-METTL3.

2.2. Quantitative Real-Time Polymerase Chain Reaction (qRT-PCR). As per the product specification, we implemented total RNA extraction via the TRIzol reagent offered

by Life Technologies (Shanghai, China), and a NanoDrop 2000 spectrophotometer offered by Thermo Fisher Scientific (Shanghai, China) was utilized for the measurement of RNA concentration. Later, we carried out reverse transcription via the PrimeScript RT kit from Takara (Dalian, China). Lastly, qRT-PCR was executed by SYBR Premix DimerEraser (Takara) and StepOnePlus Real-Time PCR System offered by Applied Biosystems (Shanghai, China), with U6 and GAPDH as internal references. Primers are displayed below:

METTL3: F: 5'-GAGATATGCTCTTAACCACCCG-3' and R: 5'-GCTGCCCAATCCATCCAA-3'

PRMT5: F 5'-CTGTCTTCCATCCGCGTTTCA-3' and R: 5'-GCAGTAGGCTGATCGTGTCTG-3'

PD-L1: F 5'-GGTGAGGATGGTTCTACACAG-3' and R: 5'-GAGAAGTGCATGAGGTTGC-3'

2.3. m6A RNA Methylation. We performed total RNA extraction via TRIzol (Thermo Fisher Scientific, China) as per the manufacturer's instructions. We used EpiQuik m6A RNA Methylation Quantification Kit (colorimetric; P-9005, EpiGentek, USA) for determining the relative content of m6A in total RNAs as per the manufacturer's instructions, and we analyzed the m6A amount colorimetrically on the basis of an optical density (OD) at 450 nm.

2.4. Cell Counting Kit-8 (CCK8) Experiment. We seeded about 2×10^3 OSCC cells per well into the 96-well plates and cultured them for described times. Then, as per the manufacturer's protocol, we determined proliferation through the Cell Counting Kit-8 (CCK8, Dojindo, Tokyo, Japan).

2.5. EdU Experiment. The effects of METTL3 and PRMT5 on OSCC cell proliferation were evaluated via Click-iT® EdU Imaging Kits offered by Invitrogen as per the product specification. We cultured cells in ninety-six-well plates (8×10^3 /well) and incubated them using 10 μL of EdU reagent for three hours. At room temperature, we fixed them with 4% formaldehyde for 20 min, and with PBS, formaldehyde was washed away. Then, cells underwent twenty minutes of incubation at room temperature utilizing 0.5% Triton X-100 from Sigma (Shanghai, China). Afterwards, we added 1 mL of Hoechst 33342 nuclear staining solution (Sigma) to each well for twenty-five minutes of incubation at room temperature in a dark place. Afterwards, we removed the staining solution by washing with PBS thrice. Ultimately, we photographed and counted the stained cells via a fluorescence microscope (CKX41-F32FL), which is from Olympus (Beijing, China).

2.6. Wound Healing Assay. In 6-well plates, we seeded OSCC cells and cultured them until >95% confluence. Then, using a sterile plastic tip, we gently scratched the cell layer through the central axis. We washed loose cells away and replaced the media with serum-free media. For each condition and time point (0, 24 h), we implemented quantification of cell motility through measuring the distance between the invading fronts of cells in four randomly selected microscopic fields ($\times 100$).

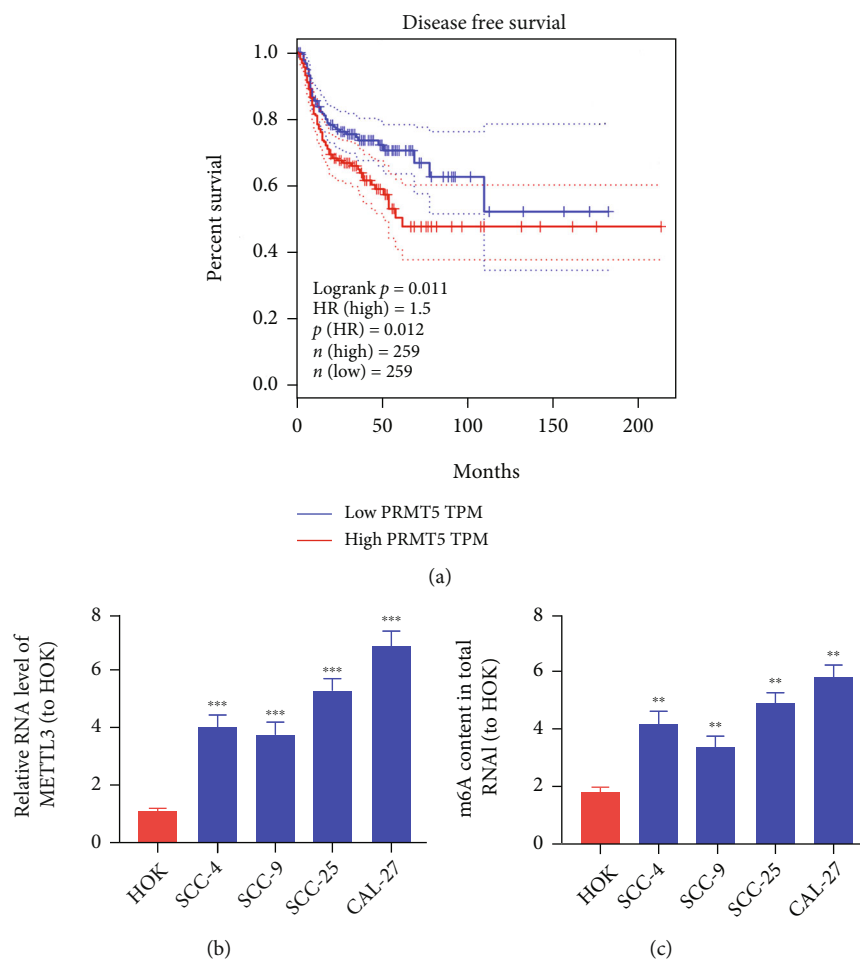


FIGURE 1: METTL3 is elevated in OSCC cell lines. (a) The effect of METTL3 amount on squamous cell carcinoma of head and neck patient survival, from the GEPIA database (<http://gepia.cancer-pku.cn/index.html>). (b) METTL3 expression level in OSCC cell lines (SCC-4, SCC-9, SCC-25, and CAL-27) and healthy oral keratinocyte (HOK) cells. (c) Detection of m6A amount of METTL3 in OSCC cells via methylation. ** $p < 0.01$, *** $p < 0.001$.

2.7. Cell Invasion Assay. To evaluate cell invasion potential, we used transwell inserts (8 μm pore size; Costar, Cambridge, MA). We seeded about 2×10^4 cancer cells in serum-free medium into the upper chamber coated with Matrigel (BD Biosciences, San Jose, CA). In the bottom chamber, we filled seven hundred and fifty microlitres of complete DMEM. We removed the cells in the upper chamber after culturing for 24 h and fixed the cells in the bottom chamber with 4% paraformaldehyde and stained them with 0.1% crystal violet. Via a light microscope, we counted the invaded cell numbers.

2.8. Western Blot Experiment. Subsequent to digestion and resuspension of OSCC cells after transfection, we inoculated the cells in six-well plates (1×10^6 /well) for four hours, and the protein expression amount of METTL3, PRMT5, IL-10, IL-4, IFN- γ , and PD-L1 was evaluated. Afterwards, we used RIPA lysate to isolate the total protein from cells and determined its total amount. Afterwards, we took 100 μg proteins from each group for electrophoresis and transferred them onto PVDF membranes. For hypothermal incubation overnight, we utilized the primary antibody, following one hour of sealing at room temperature. We added secondary anti-

bodies labeled with horseradish peroxidase for one hour of incubation the next day, followed by color development utilizing a coloring reagent and photographing.

2.9. Tumor Xenograft Implantation in Nude Mice. Six-week-old nude mice were randomly divided into two groups (three mice per group) and cultured with continuous access to sterile food and water in pathogen-free sterile conditions. To establish the OSCC xenograft model, we subcutaneously injected 5×10^6 SCC-9 cells stably transfected with METTL3 shRNA or sh-NC vectors into nude mice. Tumor growth was monitored weekly and calculated as follows: volume = (length) \times (width)²/2. The study was approved by the Ethics Committee of Foshan Stomatological Hospital, School of Stomatology and Medicine, Foshan University, and experiments were performed following the NIH guidelines on animal welfare.

2.10. Data Analysis. We implemented all assays thrice separately and analyzed data via SPSS 20.0 software. Data were displayed as mean \pm SD. Independent two-sample t -test was adopted for intergroup comparison, and the Pearson method

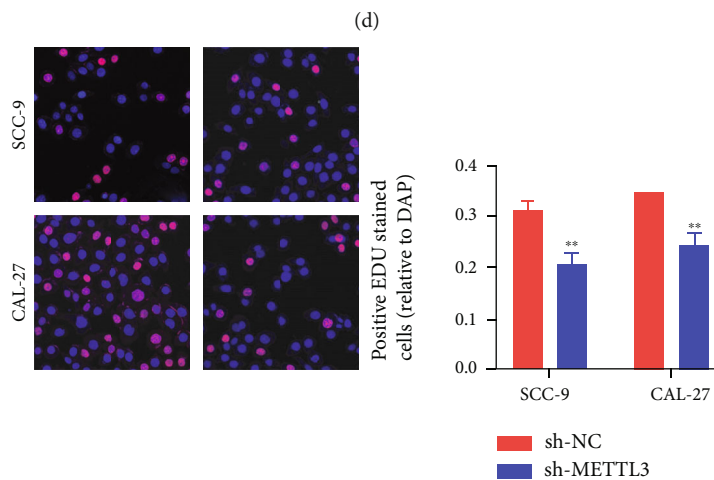
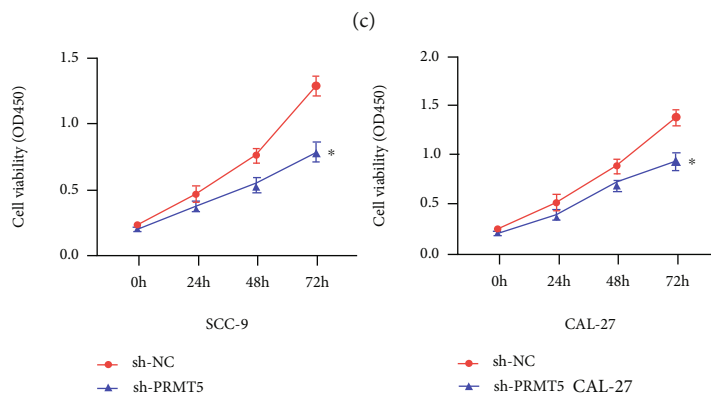
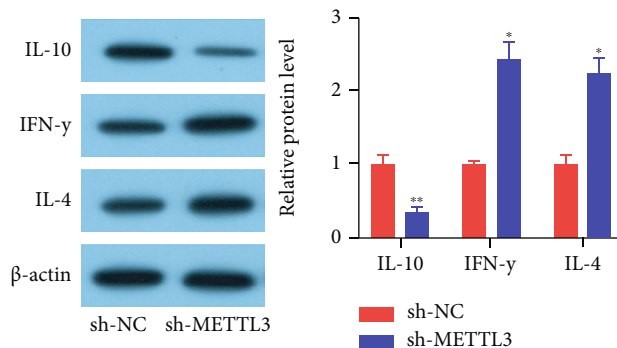
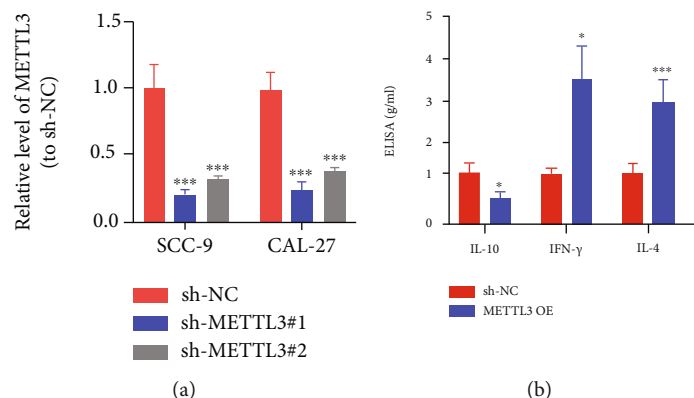


FIGURE 2: Continued.

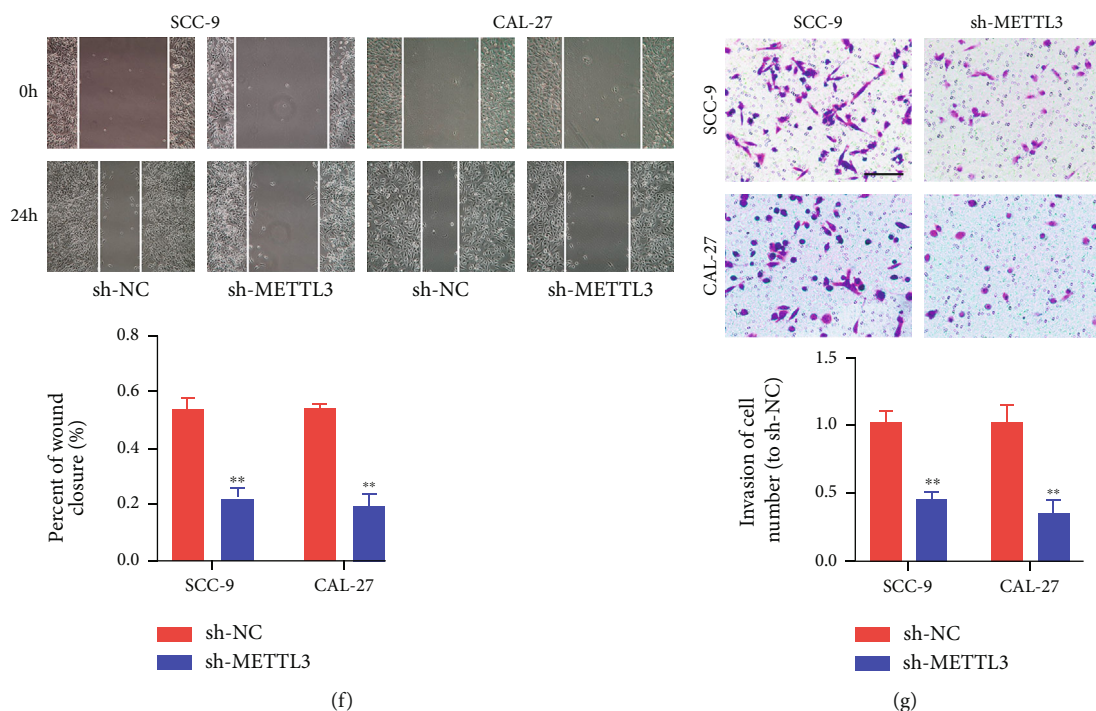


FIGURE 2: sh-METTL3 suppressed OSCC cell metastasis and proliferation and intensified CD8+ T cell activation. (a) qRT-PCR results displayed that METTL3 amount was decreased after transfection with sh-METTL3#1 and sh-METTL3#2. The construct sh-METTL3#1 with the highest efficiency was utilized for a mechanism study, which was named as sh-METTL3. (b, c) sh-METTL3 intensified CD8+ T cell activation. (d, e) CCK8 and EdU assays displayed that sh-METTL3 attenuated OSCC cell proliferation. (f) Wound healing assay displayed that sh-METTL3 suppressed the competence of OSCC cell migration. (g) Transwell assays displayed that sh-METTL3 suppressed the competence of OSCC cell invasion. * $p < 0.05$, ** $p < 0.01$, and *** $p < 0.001$.

was utilized for correlation analysis. The variation has statistical significance in the case of $p < 0.05$.

3. Results

3.1. METTL3 Is Elevated in OSCC Cell Lines. METTL3 was found to be closely related to the prognosis of squamous cell carcinoma of head and neck through the GEPIA database (<http://gepia.cancer-pku.cn/index.html>) (Figure 1(a)). The overall survival in high-expression METTL3 was remarkably shorter than that in low-expression METTL3. As the most common head and neck malignancy, OSCC is responsible for roughly 90% of malignant epithelial tumors in the oral and maxillofacial region. And METTL3 is reported to be overexpressed in most human cancers. Therefore, we want to probe into the function of METTL3 in the OSCC and its mechanism. METTL3 mRNA amount was also identified to be expressed higher in OSCC cells, in comparison to that in healthy oral keratinocyte (HOK) cells (Figure 1(b)). Then, we analyzed the amount of total methylated RNA (m6A) in OSCC cell lines. The amount of m6A was remarkably increased in OSCC cell lines, which is displayed in Figure 1(c).

3.2. METTL3 Intensified OSCC Cell Proliferation and Metastasis and Suppressed CD8+ T Cell Activation. For discovering the role of METTL3 in OSCC, we evaluated the

effects of METTL3 on CD8+ T cell activation and tumor cell phenotypes. We transfected CAL-27 and SCC-9 cell lines with sh-METTL3#1 and sh-METTL3#2 to knock down the expression amount of METTL3 (Figure 2(a)). We used the construct sh-METTL3#1 with the highest efficiency for the mechanism study, which was named as sh-METTL3. We utilized ELISA and western blot to determine the amounts of antitumor cytokines IL-4 and IFN- γ as well as protumor cytokine IL-10 (Figures 2(b) and 2(c)). We found that sh-METTL3 transfection exhibited a decreased amount of IL-10 yet increased amounts of IL-4 and IFN- γ . This suggests that sh-METTL3 intensifies CD8+ T cell activation. Then, the CCK-8 and EdU assays displayed that proliferation of OSCC cells was remarkably attenuated in the sh-METTL3 group, compared to the sh-NC group (Figures 2(d) and 2(e)). Moreover, METTL3 silencing remarkably attenuated the migratory and invasive capacities of SCC-9 and CAL-27 cells (Figures 2(f) and 2(g)).

We then transfected CAL-27 and SCC-9 cell lines with METTL3 overexpression vectors (Figure 3(a)). The upmodulated cell line was named as METTL3 OE; however, the matched control cell line was named after the vector. We found that METTL3 OE transfection exhibited an increased amount of IL-10 yet decreased amounts of IL-4 and IFN- γ (Figures 3(b) and 3(c)). This indicates that METTL3 overexpression inhibits CD8+ T cell activation. The CCK-8 and EdU assays displayed that proliferation of CAL-27 and

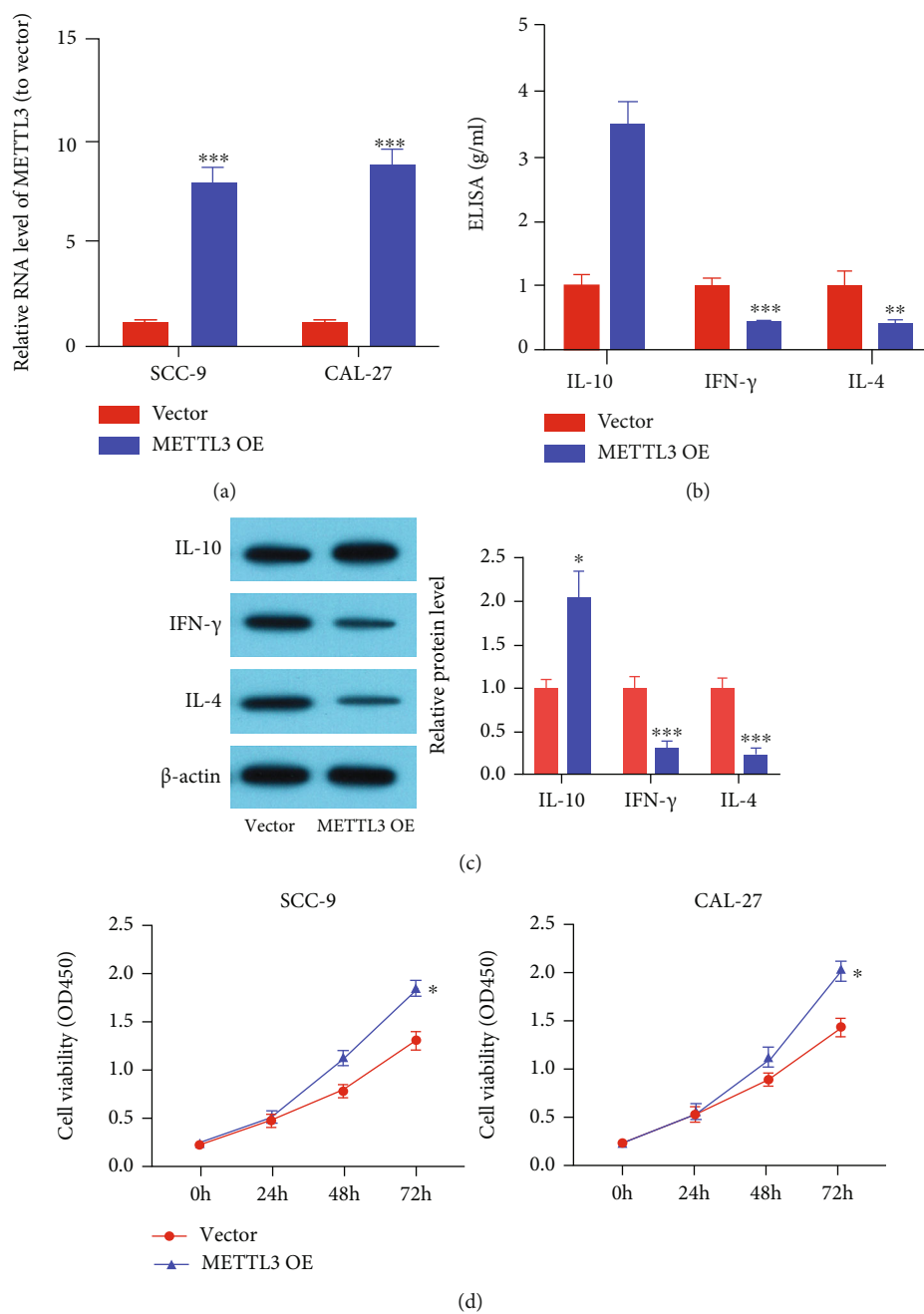


FIGURE 3: Continued.

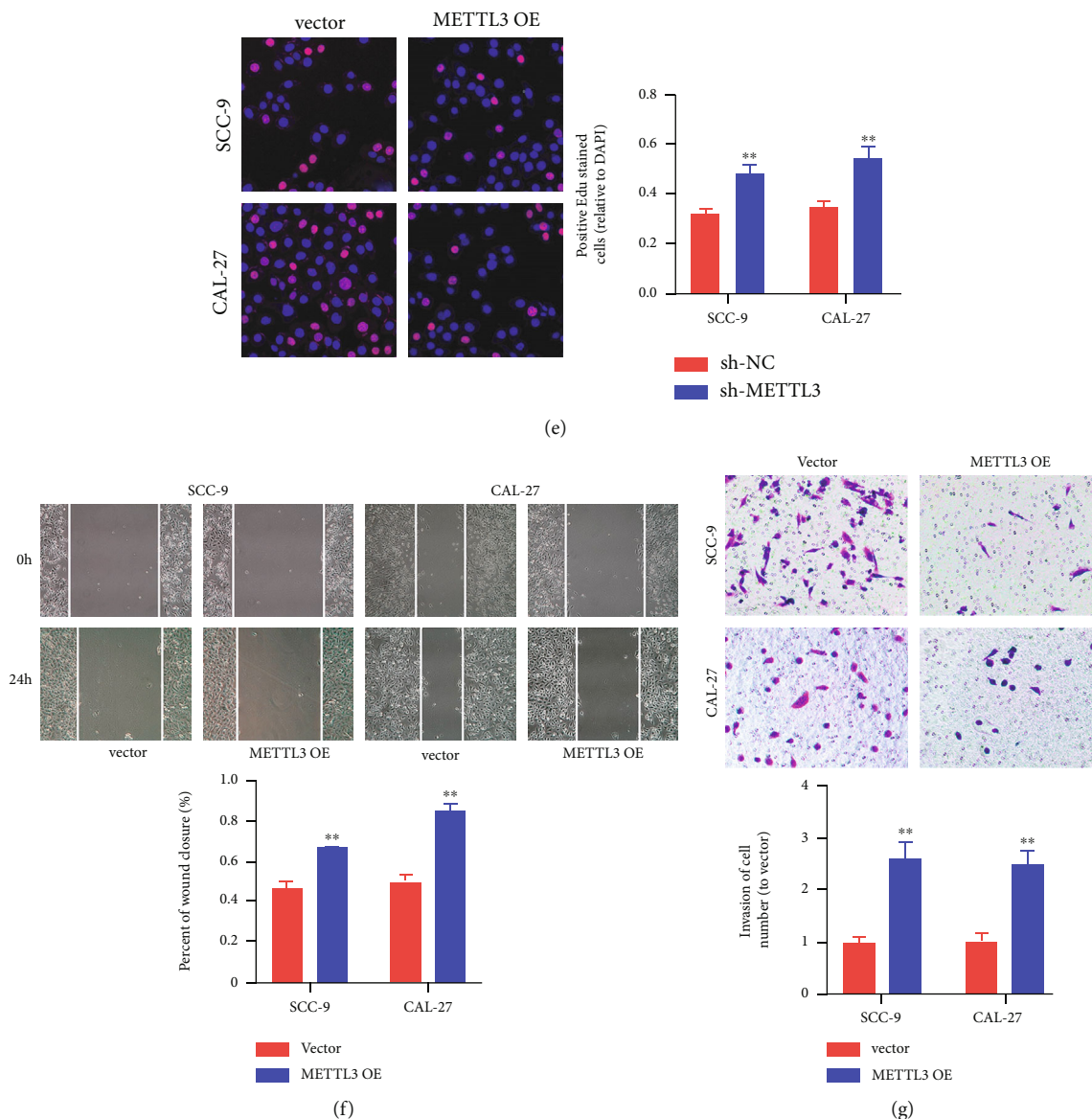


FIGURE 3: METTL3 intensified OSCC cell proliferation and metastasis and suppressed CD8+ T cell activation. (a) qRT-PCR results displayed that METTL3 amount was higher after transfection with METTL3 overexpression vectors. (b, c) METTL3 overexpression suppressed CD8+ T cell activation. (d, e) CCK8 and EdU assays displayed that METTL3 overexpression accelerated OSCC cell proliferation. (f) Wound healing assay displayed that METTL3 overexpression accelerated the competence of OSCC cell migration. (g) Transwell assays displayed that METTL3 overexpression intensified the competence of OSCC cell invasion. * $p < 0.05$, ** $p < 0.01$, and *** $p < 0.001$.

SCC-9 cells was remarkably intensified in the METTL3 OE group, compared to the vector group (Figures 3(d) and 3(e)). Furthermore, METTL3 OE markedly accelerated the invasion and migration of SCC-9 and CAL-27 cells (Figures 3(f) and 3(g)). These results displayed that METTL3 could intensify the cell metastasis and proliferation of OSCC in vitro and suppress CD8+ T cell activation.

3.3. METTL3 shRNA Limited the Growth of OSCC In Vivo.

We generated xenograft models to verify the findings in this study. SCC-9 cells transfected with METTL3 shRNA were subcutaneously injected into nude mice. The results showed that METTL3 shRNA greatly limited tumor proliferation in vivo (Figures 4(a)–4(c)).

3.4. PRMT5 and PD-L1 Might Be the Potential Targets Modulated by METTL3 in OSCC.

With the UALCAN database (<http://ualcan.path.uab.edu/analysis.html>), we found that multiple genes are positively associated with METTL3 expression. The Pearson test displayed that the top ten genes in a correlation include SUPT16H, PARP2, APEX1, ACIN1, METT11D1, TMEM55B, PRMT5 (Figure 5(a)), GMPR2, RAB2B, and OXA1L. Next, via the GEPIA database (<http://gepia.cancer-pku.cn/index.html>), we found that the higher the PRMT5 expression was, the worse the prognosis was (Figure 5(b)).

Next, we found by the SRAMP database (<http://www.cuilab.cn/sramp>) that the retrieval of PRMT5 and PD-L1 can occur at multiple sites of m6A methylation (Figure 6(a)).

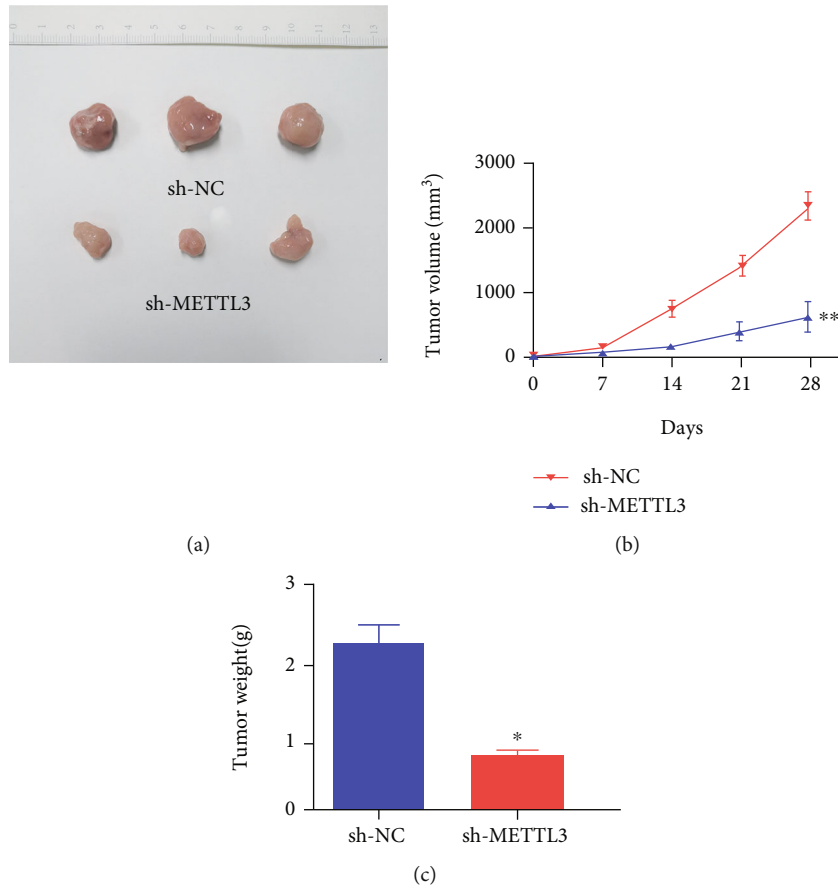


FIGURE 4: METTL3 shRNA limited the growth of OSCC in vivo. (a) Representative images of tumors from indicated xenografts. (b) Tumor volume and (c) weight data of indicated xenografts. * $p < 0.05$, ** $p < 0.01$.

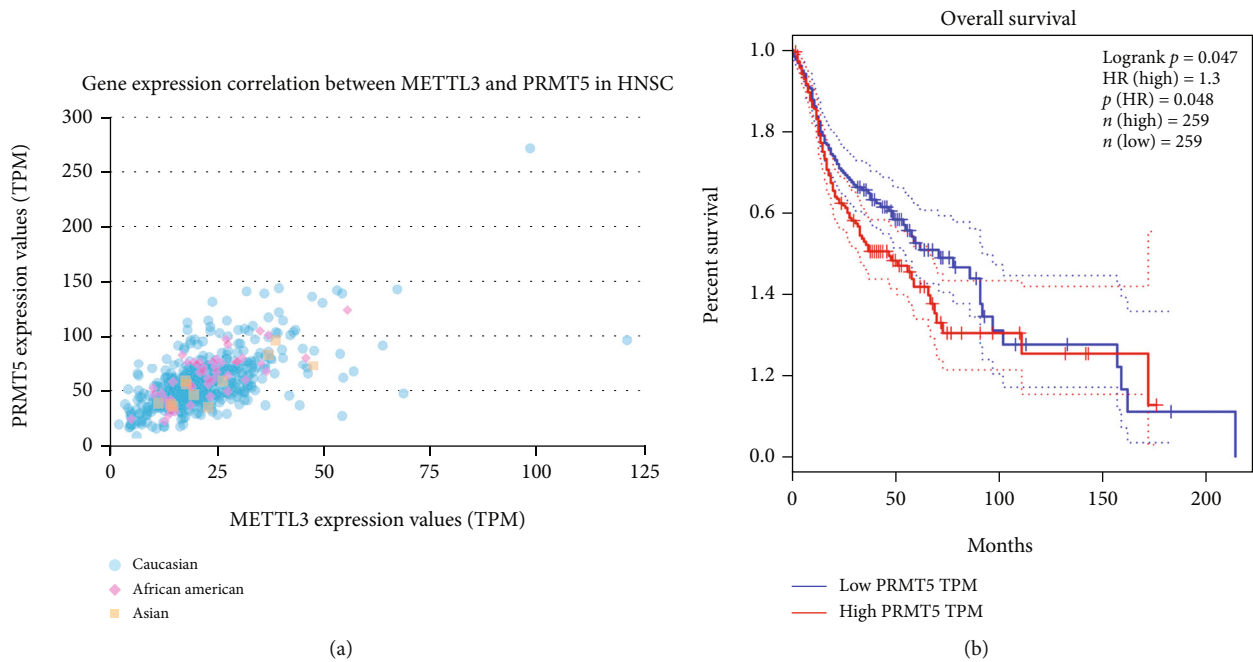


FIGURE 5: PRMT5 is elevated in OSCC and has association with poor prognosis. (a) METTL3 correlation analysis on the UALCAN database. (b) The relationship between PRMT5 amount and squamous cell carcinoma of head and neck patient survival, from the GEPIA database. *** $p < 0.001$.

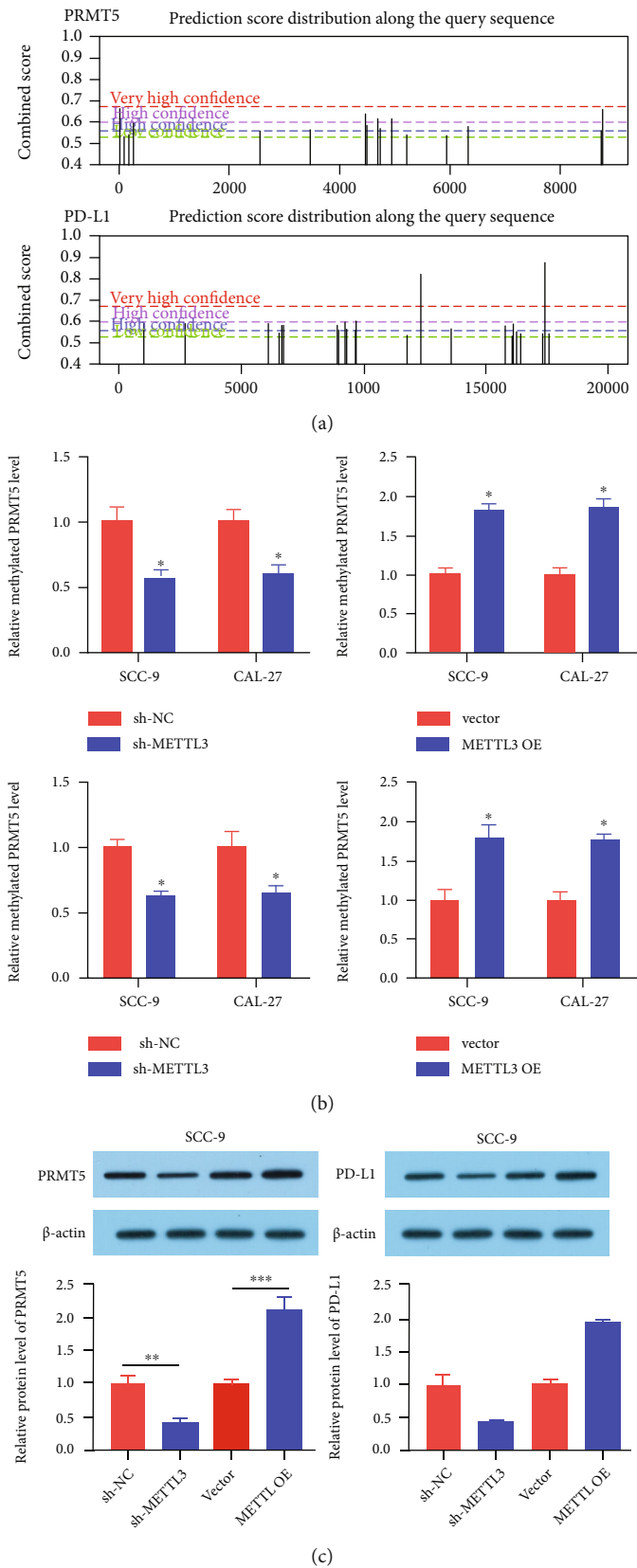
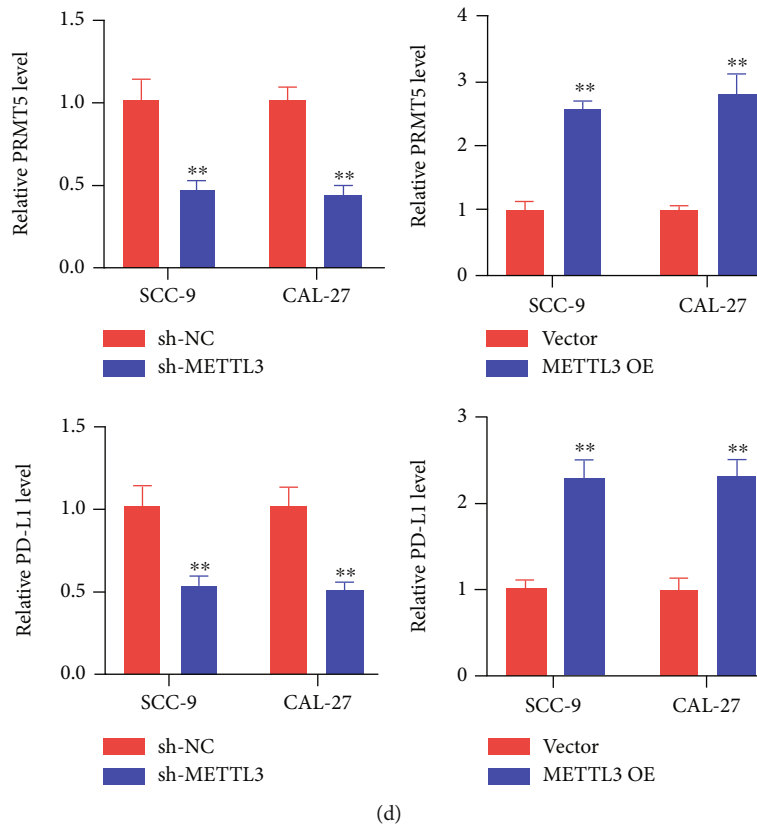


FIGURE 6: Continued.



(d)

FIGURE 6: PRMT5 and PD-L1 might be the potential targets modulated by METTL3 in OSCC. (a) Bioinformatics predicted that PRMT5 and PD-L1 could produce m6A methylation at multiple sites. (b) Detection of m6A methylated amount of METTL3 and PD-L1 in OSCC cells after transfection. (c, d) The protein and RNA level of OSCC and PD-L1 cells after transfection. * $p < 0.05$, ** $p < 0.01$.

Through methylation detection, we found that the m6A amounts of PRMT5 and PD-L1 in OSCC cells transfected with sh-METTL3 were remarkably lower than those in the sh-NC group, while the m6A amounts of PRMT5 and PD-L1 in OSCC cells transfected with METTL3 OE were remarkably higher than those in the vector group (Figure 6(b)). As shown in Figures 6(c) and 6(d), the expression amounts of PRMT5 and PD-L1 were remarkably decreased in sh-METTL3-transfected OSCC cells, while the expression amounts of PRMT5 and PD-L1 were remarkably increased in METTL3 OE-transfected OSCC cells.

3.5. Silencing PRMT5 and PD-L1 Attenuated the Occurrence and Development of OSCC. To verify the role of PRMT5 and PD-L1, we downmodulated the expression amounts of PRMT5 and PD-L1 with shRNA (Figure 7(a)). We found that sh-PD-L1 attenuated IL-10 secretion and intensified IL-4 and IFN- γ secretion (Figure 7(b)), indicating that sh-PD-L1 promotes CD8+ T cell activation. Then, the CCK-8 and EdU assays displayed that proliferation of CAL-27 and SCC-9 cells was remarkably attenuated in the sh-PRMT5 group, in comparison to the sh-NC group (Figures 7(c) and 7(d)). Furthermore, sh-PRMT5 markedly attenuated the invasion and migration of CAL-27 and SCC-9 cells (Figures 7(e) and 7(f)).

3.6. METTL3 Promotes OSCC Progression through PRMT5 and PD-L1. For further determining whether METTL3 expression accounts for the function of PRMT5 and PD-L1, we attempted to use METTL3 OE to reverse the effects of sh-PD-L1 and sh-PRMT5 on cells. As shown in Figure 8(a), there were no differences in IFN- γ , IL-4, and IL-10 between the sh-PD-L1+vector group and the sh-PD-L1+METTL3 OE group. The cotransfection of METTL3 OE could not weaken the effect of sh-PD-L1 on CD8+ T cells. Similarly, as shown in Figures 8(b)–8(d), the migration, invasion, and proliferation of OSCC cells displayed no difference between the sh-PRMT5+vector group and the sh-PRMT5+METTL3 OE group. METTL3 OE could not reverse or weaken the inhibitory effects of sh-PRMT5 on proliferation, migration, and invasion of OSCC cells. These findings demonstrated that METTL3 promotes OSCC progression by regulating PRMT5 and PD-L1.

4. Discussion

m6A, the most abundant modification in mRNA, is modulated by the m6A demethylases, methyltransferases, and readers. Growing evidence has confirmed that the m6A modification has an association with invasion, proliferation, tumorigenesis, and metastasis and serves as an oncogene or

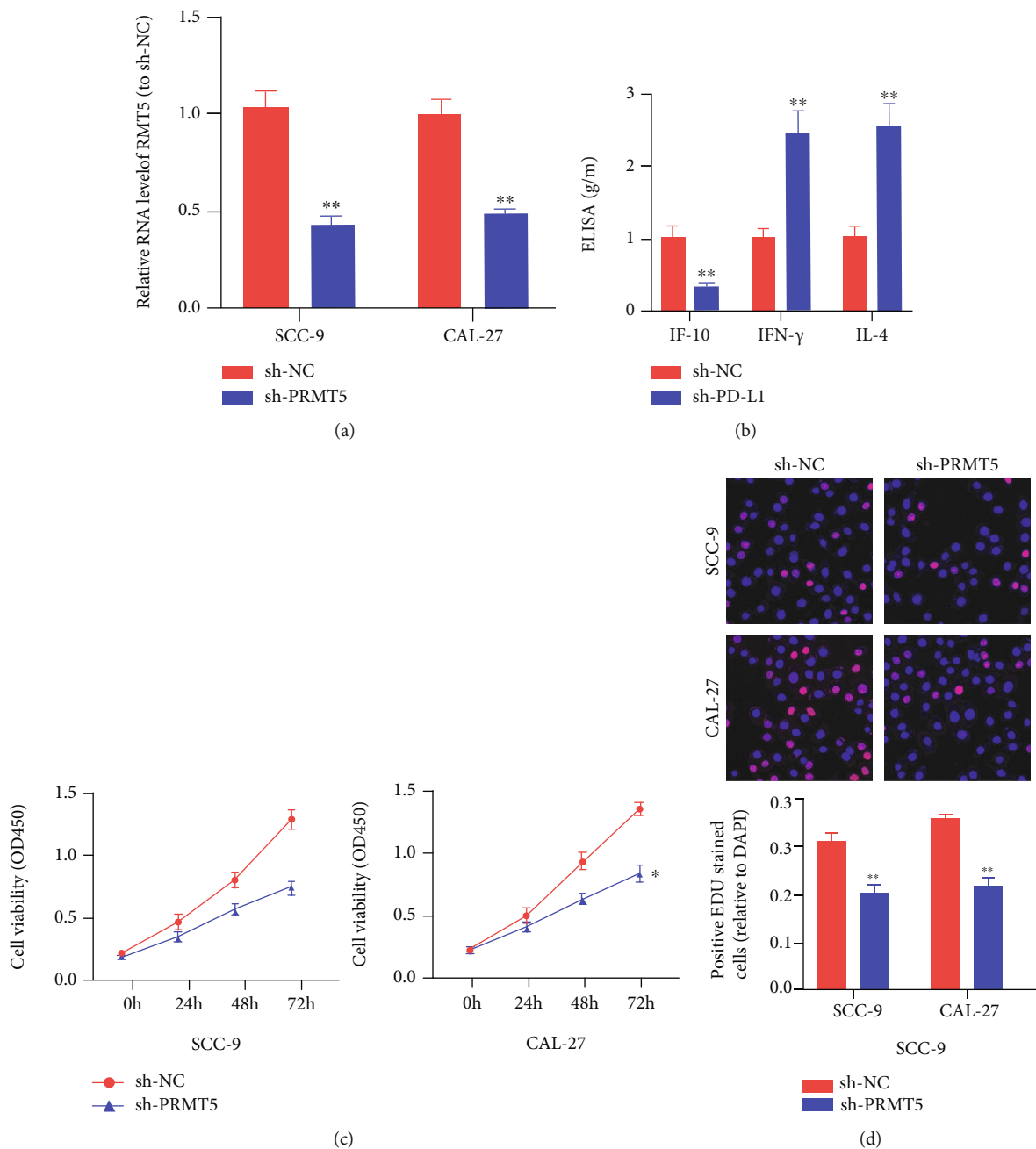


FIGURE 7: Continued.

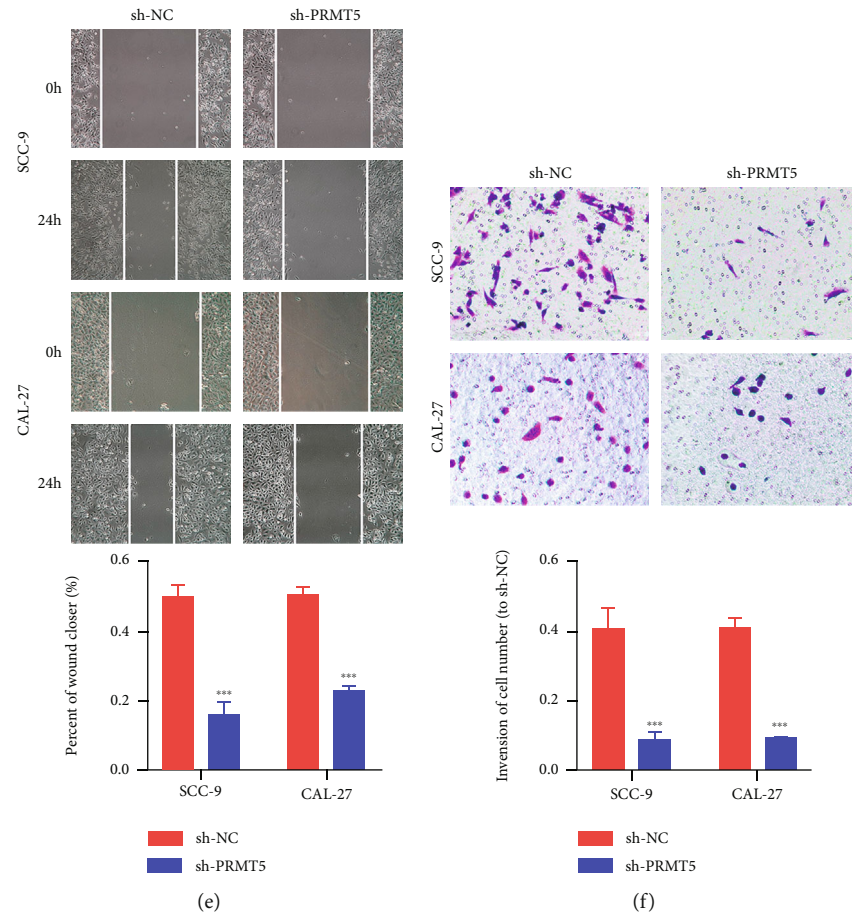


FIGURE 7: Silencing PRMT5 and PD-L1 attenuated the occurrence and development of OSCC. (a) The amount of PRMT5 in SCC-9 and CAL-27 cells after being transfected with sh-PRMT5. (b) sh-PD-L1 intensified the immune activity of T cells. (c, d) CCK8 and EdU assays displayed that sh-PRMT5 attenuated OSCC cell proliferation. (e) Wound healing assay displayed that sh-PRMT5 suppressed the competence of OSCC cell migration. (f) Transwell assays displayed that sh-METTL3 attenuated the competence of OSCC cell invasion. * $p < 0.05$, ** $p < 0.01$, and *** $p < 0.001$.

antioncogene in malignant tumors [15]. Therefore, we want to study OSCC from the direction of m6A, hoping to make new progress in the diagnosis or treatment of OSCC.

In our study, bioanalysis displayed that METTL3 has close relevance with the prognosis of squamous cell carcinoma of head and neck. qRT-PCR displayed that METTL3 is highly expressed in OSCC cells, and we concluded that METTL3 may play a role as an oncogene in OSCC. Subsequently, through a series of functional experiments, we found that highly expressed METTL3 could promote the progression of OSCC and inhibit the activity of CD8⁺ T cells, suggesting that METTL3 plays an important biological function in the development and occurrence of OSCC. Then, in order to further explore the molecular mechanism of METTL3 in OSCC, we found a good positive correlation between PRMT5 and METTL3 expressions through database analysis. In OSCC patients, PRMT5 expression was not only remarkably elevated in OSCC but also related to poor prognosis. Moreover, countless studies have demonstrated that PRMT5 promotes tumor progression. For example, through the FBW7/CMYC axis, PRMT5 intensifies glycolysis and tumorigenicity of pancreatic cancer [26]. The PRMT5/WNT4 axis intensifies proliferation and lymph node

metastasis of laryngeal carcinoma [27]. PRMT5 inhibits the expression of BTG2 in hepatocellular carcinoma through the ERK signaling pathway, thereby promoting cell proliferation [28]. Besides, some researches displayed that PRMT5 expression is increased in OSCC tissues and is related to EMT [29]. However, its role in the OSCC needs to be further verified. In this study, our experiment also demonstrated that overexpression of PRMT5 can promote the invasion, migration, and proliferation of OSCC tumor cells.

METTL3 is one of the most important proteins in the m6A methyltransferase complex, which is mainly responsible for the m6A modification of RNA molecules on N6-methyladenine [22, 23]. m6A is a widely existing base modification behavior on mRNA, which can maintain mRNA stability [30]. Methylation in the 5'UTR region of mRNA plays an important part in mRNA degradation, stability, editing, splicing, polyadenylation, etc. Methylation in the 3'UTR region makes contribution to exonuclear transport of mRNA, structural stability of mRNA with polyA-binding proteins, and initiation of translation [31–33]. We hypothesized that METTL3 may mediate the methylation of PRMT5 mRNA and participate in the pathogenesis of OSCC. And in the process of experiment, we found that METTL3 can influence the activity

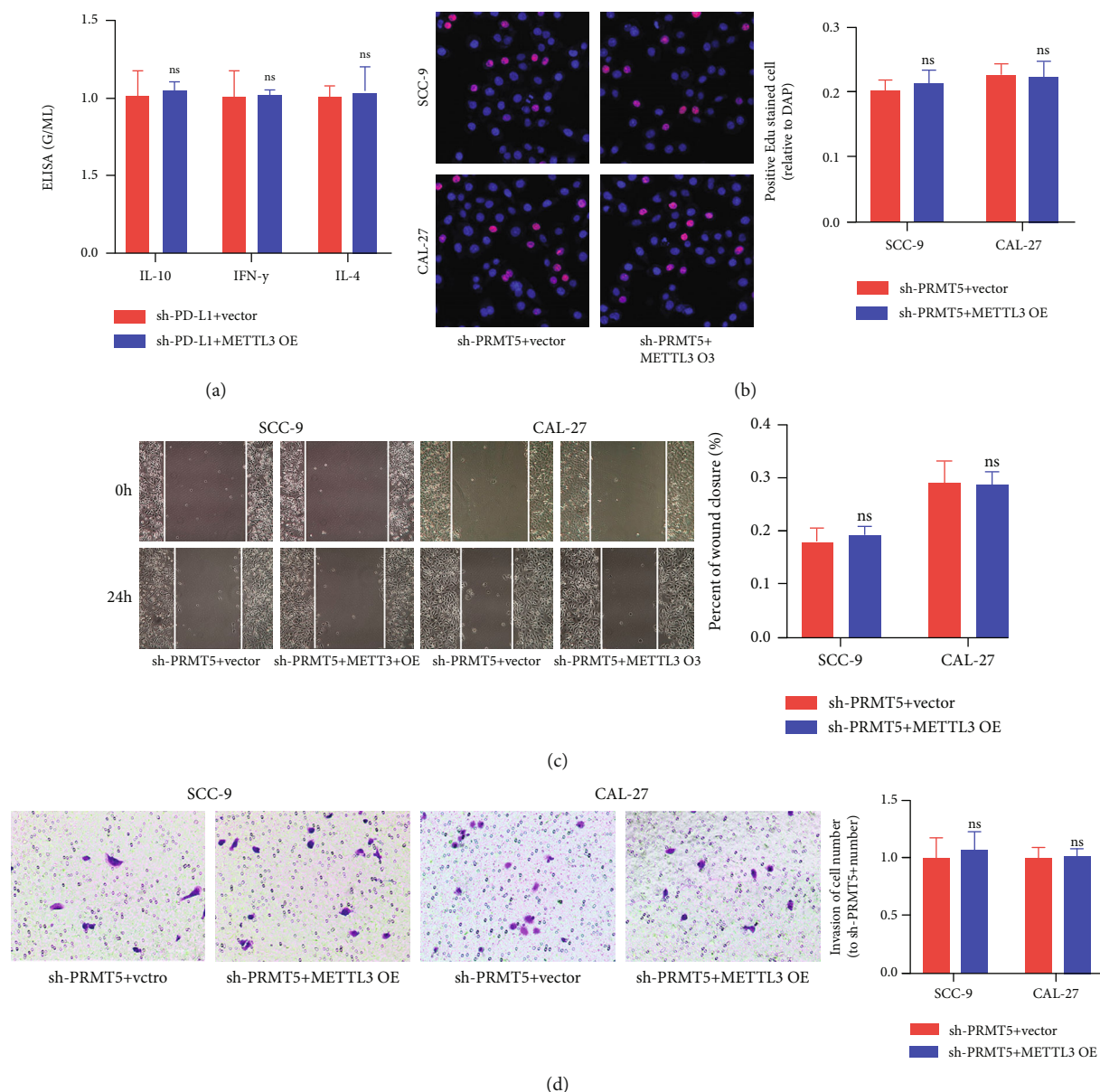


FIGURE 8: METTL3 promotes OSCC progression through PRMT5 and PD-L1. (a) METTL3 OE could not reverse or weaken the effect of sh-PD-L1 on the immune activity of CD8+ T cells. (b) EdU assay displayed that overexpression of METTL3 could not eliminate or weaken the inhibition of sh-PRMT5 on cell proliferation. (c) Overexpression of METTL3 could not eliminate or weaken the inhibition of sh-PRMT5 on cell migration. (d) Overexpression of METTL3 could not eliminate or weaken the inhibition of sh-PRMT5 on cell invasion. ns: no statistical significance.

of CD8+ T cells to kill cancer cells. At present, the PD1/PD-L1 pathway is a hotspot of tumor immunity, and we confirmed by the SRAMP database that the retrieval of PRMT5 and PD-L1 can indeed modify m6A methylation in multiple sites, so we can speculate that METTL3 by methylation modification regulates the expression of PRMT5 and PD-L1. Subsequently, through western blot, qRT-PCR, and methylation detection, we found that downregulation of METTL3 could reduce the m6A amounts of PRMT5 and PD-L1 and then reduce the expressions of PRMT5 and PD-L1. And by the torsion test, we found that METTL3 OE could not reverse

the effect of sh-PD-L1 on T cell activity. At the same time, METTL3 OE could not reverse the inhibitory effect of sh-PRMT5 on OSCC cells. This suggests that METTL3 is involved in the pathogenesis of OSCC by mediating the methylation of PRMT5 and PD-L1.

In summary, METTL3 is abnormally highly expressed in OSCC. METTL3 can regulate the expression of PRMT5 and PD-L1 through methylation modification, thereby regulating the migration, proliferation, invasion, and cellular immunity of OSCC, and it may become a new target for the diagnosis and treatment of OSCC.

Data Availability

The data used to support the findings of this study are included within the article.

Conflicts of Interest

The authors declare that there is no conflict of interest regarding the publication of this paper.

Authors' Contributions

Yilong Ai, Shiwei Liu, and Hailing Luo contributed equally to this work.

References

- [1] Y. He, Z. Fan, L. He et al., "Metformin combined with 4SC-202 inhibited the migration and invasion of OSCC via STAT3/TWIST1," *Oncotargets and Therapy*, vol. Volume 13, pp. 11019–11029, 2020.
- [2] S. Sun, J. Wang, J. Liu et al., "MiR-302b suppresses tumor metastasis by targeting Frizzled 6 in OSCC," *Journal of Dental Research*, vol. 100, no. 7, pp. 739–745, 2021.
- [3] A. W. Y. Chai, K. P. Lim, and S. C. Cheong, "Translational genomics and recent advances in oral squamous cell carcinoma," *Seminars in Cancer Biology*, vol. 61, pp. 71–83, 2020.
- [4] F. Mohajertehran, A. Sahebkar, R. Zare, and N. Mohtasham, "The promise of stem cell markers in the diagnosis and therapy of epithelial dysplasia and oral squamous cell carcinoma," *Journal of Cellular Physiology*, vol. 233, no. 11, pp. 8499–8507, 2018.
- [5] L. Jia, T. Wang, G. Ding et al., "Trop2 inhibition of P16 expression and the cell cycle promotes intracellular calcium release in OSCC," *International Journal of Biological Macromolecules*, vol. 164, pp. 2409–2417, 2020.
- [6] Y. Chen, Z. Shao, E. Jiang et al., "CCL21/CCR7 interaction promotes EMT and enhances the stemness of OSCC via a JAK2/STAT3 signaling pathway," *Journal of Cellular Physiology*, vol. 235, no. 9, pp. 5995–6009, 2020.
- [7] W. Su, Y. Shen, Y. Wang et al., "circPHIP promotes oral squamous cell carcinoma progression by sponging miR-142-5p and regulating PHIP and ACTN4 expression," *Mol Ther Nucleic Acids*, vol. 23, pp. 185–199, 2021.
- [8] R. Mahieu, J. S. de Maar, E. R. Nieuwenhuis et al., "New developments in imaging for sentinel lymph node biopsy in early-stage oral cavity squamous cell carcinoma," *Cancers (Basel)*, vol. 12, no. 10, p. 3055, 2020.
- [9] A. C. Chi, T. A. Day, and B. W. Neville, "Oral cavity and oropharyngeal squamous cell carcinoma—an update," *CA: a Cancer Journal for Clinicians*, vol. 65, no. 5, pp. 401–421, 2015.
- [10] X. Guo, K. Li, W. Jiang et al., "RNA demethylase ALKBH5 prevents pancreatic cancer progression by posttranscriptional activation of PER1 in an m6A-YTHDF2-dependent manner," *Molecular Cancer*, vol. 19, no. 1, p. 91, 2020.
- [11] G. W. Kim and A. Siddiqui, "The role of N6-methyladenosine modification in the life cycle and disease pathogenesis of hepatitis B and C viruses," *Experimental & Molecular Medicine*, vol. 53, no. 3, pp. 339–345, 2021.
- [12] J. Guo, H. W. Tang, J. Li, N. Perrimon, and D. Yan, "Xio is a component of the Drosophila sex determination pathway and RNA N6-methyladenosine methyltransferase complex," *Proceedings of the National Academy of Sciences of the United States of America*, vol. 115, no. 14, pp. 3674–3679, 2018.
- [13] S. Schwartz, M. R. Mumbach, M. Jovanovic et al., "Perturbation of m6A writers reveals two distinct classes of mRNA methylation at internal and 5' sites," *Cell Reports*, vol. 8, no. 1, pp. 284–296, 2014.
- [14] G. Z. Huang, Q. Q. Wu, Z. N. Zheng et al., "m6A-related bioinformatics analysis reveals that HNRNPC facilitates progression of OSCC via EMT," *Aging (Albany NY)*, vol. 12, no. 12, pp. 11667–11684, 2020.
- [15] Y. Shi, C. Zheng, Y. Jin et al., "Reduced expression of METTL3 promotes metastasis of triple-negative breast cancer by m6A methylation-mediated COL3A1 up-regulation," *Frontiers in Oncology*, vol. 10, p. 1126, 2020.
- [16] Z. Zhang, Q. Wang, M. Zhang et al., "Comprehensive analysis of the transcriptome-wide m6A methylome in colorectal cancer by MeRIP sequencing," *Epigenetics*, vol. 16, no. 4, 2021.
- [17] L. Yang, X. Liu, L. Song et al., "Melatonin restores the pluripotency of long-term-cultured embryonic stem cells through melatonin receptor-dependent m6A RNA regulation," *Journal of Pineal Research*, vol. 69, no. 2, article e12669, 2020.
- [18] G. Yang, Z. Sun, and N. Zhang, "Reshaping the role of m6A modification in cancer transcriptome: a review," *Cancer Cell International*, vol. 20, no. 1, p. 353, 2020.
- [19] S. Ma, C. Chen, X. Ji et al., "The interplay between m6A RNA methylation and noncoding RNA in cancer," *Journal of Hematology & Oncology*, vol. 12, no. 1, p. 121, 2019.
- [20] L. Liu, Y. Wu, Q. Li et al., "METTL3 promotes tumorigenesis and metastasis through BMI1 m⁶A methylation in oral squamous cell carcinoma," *Molecular Therapy*, vol. 28, no. 10, pp. 2177–2190, 2020.
- [21] O. Shriwas, M. Priyadarshini, S. K. Samal et al., "DDX3 modulates cisplatin resistance in OSCC through ALKBH5-mediated m6A-demethylation of FOXM1 and NANOG," *Apoptosis*, vol. 25, no. 3-4, pp. 233–246, 2020.
- [22] L. Xiao, Q. Zhao, B. Hu, J. Wang, C. Liu, and H. Xu, "METTL3 promotes IL-1 β -induced degeneration of endplate chondrocytes by driving m6A-dependent maturation of miR-126-5p," *Journal of Cellular and Molecular Medicine*, vol. 24, no. 23, pp. 14013–14025, 2020.
- [23] T. Li, Y. Zhuang, W. Yang et al., "Silencing of METTL3 attenuates cardiac fibrosis induced by myocardial infarction via inhibiting the activation of cardiac fibroblasts," *The FASEB Journal*, vol. 35, no. 2, article e21162, 2021.
- [24] C. S. Chien, J. Y. Li, Y. Chien et al., "METTL3-dependent N(6)-methyladenosine RNA modification mediates the atherogenic inflammatory cascades in vascular endothelium," *Proceedings of the National Academy of Sciences*, vol. 118, no. 7, 2021.
- [25] X. Liu, J. Qin, T. Gao et al., "Analysis of METTL3 and METTL14 in hepatocellular carcinoma," *Aging (Albany NY)*, vol. 12, no. 21, pp. 21638–21659, 2020.
- [26] Y. Qin, Q. Hu, J. Xu et al., "PRMT5 enhances tumorigenicity and glycolysis in pancreatic cancer via the FBW7/cMyc axis," *Cell Communication and Signaling: CCS*, vol. 17, no. 1, p. 30, 2019.

- [27] N. Wang, H. Yan, D. Wu et al., "PRMT5/Wnt4 axis promotes lymph-node metastasis and proliferation of laryngeal carcinoma," *Cell Death & Disease*, vol. 11, no. 10, p. 864, 2020.
- [28] H. Jiang, Y. Zhu, Z. Zhou et al., "PRMT5 promotes cell proliferation by inhibiting BTG2 expression via the ERK signaling pathway in hepatocellular carcinoma," *Cancer Medicine*, vol. 7, no. 3, pp. 869–882, 2018.
- [29] Y. Amano, D. Matsubara, T. Yoshimoto et al., "Expression of protein arginine methyltransferase-5 in oral squamous cell carcinoma and its significance in epithelial-to-mesenchymal transition," *Pathology International*, vol. 68, no. 6, pp. 359–366, 2018.
- [30] Y. Niu, X. Zhao, Y. S. Wu, M. M. Li, X. J. Wang, and Y. G. Yang, "N⁶-methyl-adenosine (m⁶A) in RNA: an old modification with a novel epigenetic function," *Genomics, Proteomics & Bioinformatics*, vol. 11, no. 1, pp. 8–17, 2013.
- [31] Y. Li, D. Qi, B. Zhu, and X. Ye, "Analysis of m6A RNA methylation-related genes in liver hepatocellular carcinoma and their correlation with survival," *International Journal of Molecular Sciences*, vol. 22, no. 3, 2021.
- [32] S. Tian, J. Lai, T. Yu, Q. Li, and Q. Chen, "Regulation of gene expression associated with the N6-methyladenosine (m6A) enzyme system and its significance in cancer," *Frontiers in Oncology*, vol. 10, 2020.
- [33] X. Huang, D. Lv, X. Yang, M. Li, and H. Zhang, "m6A RNA methylation regulators could contribute to the occurrence of chronic obstructive pulmonary disease," *Journal of Cellular and Molecular Medicine*, vol. 24, no. 21, pp. 12706–12715, 2020.