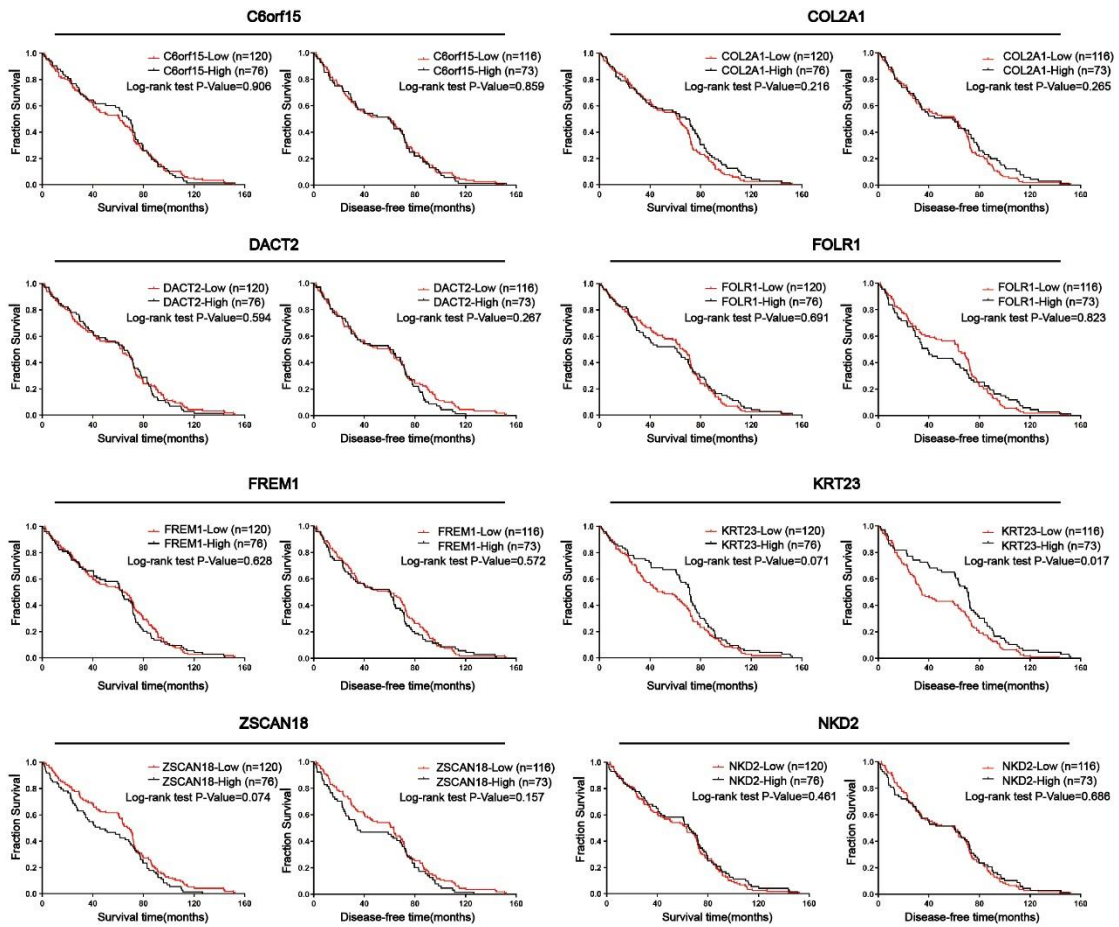


Supplementary. Figure.



Supplementary Figure Legend

VSTM2L was chosen as a significantly prognostic biomarker in patients with rectal cancer receiving pCRT from 9 candidate genes. Kaplan-Meier survival curves of patients in GSE87211 demonstrate the prognostic impact of up-regulated significantly gene expression, including C6orf15, KRT23, COL2A1, FOLR1, FREM1, DACT2, NKD2, ZSCAN18 on survival time and disease-free time except for VSTM2L gene.

Supplementary Table.S1 Information of primer sequences and primary antibody

Primer Sequences for Quantitate real-time PCR	
VSTM2L-Forward	5'-GATCCAGTGGTGGTATGTACGG-3'
VSTM2L-Reverse	5'-ACACTTATTTTGGTTGCCTCCTTC-3'
GAPDH--Forward	5'-ATTCCACCCATGGCAAATTCC-3'
GAPDH--Reverse	5'-GACTCCACGACGTACTCAGC -3'
Primary Antibody for Western-Blotting	
VSTM2L	1:500, 25457-1-AP, Proteintech Group
CFLAR	1:1000,10394-1-AP, Proteintech Group
ALOX5	1:500, 10021-1-Ig, Proteintech Group
PMAIP1	1:1000, NB600-1159, Novus Biologicals
EGR1	1:1000, 55117-1-AP, Proteintech Group
NCF2	1:500, 15551-1-AP, Proteintech Group
SLC39A8	1:1000, 20459-1-AP, Proteintech Group
PEG10	1:1000, 14412-1-AP, Proteintech Group
GAPDH	1:5000, 60004-1- Ig, Proteintech Group