

SUPPORTING INFORMATION

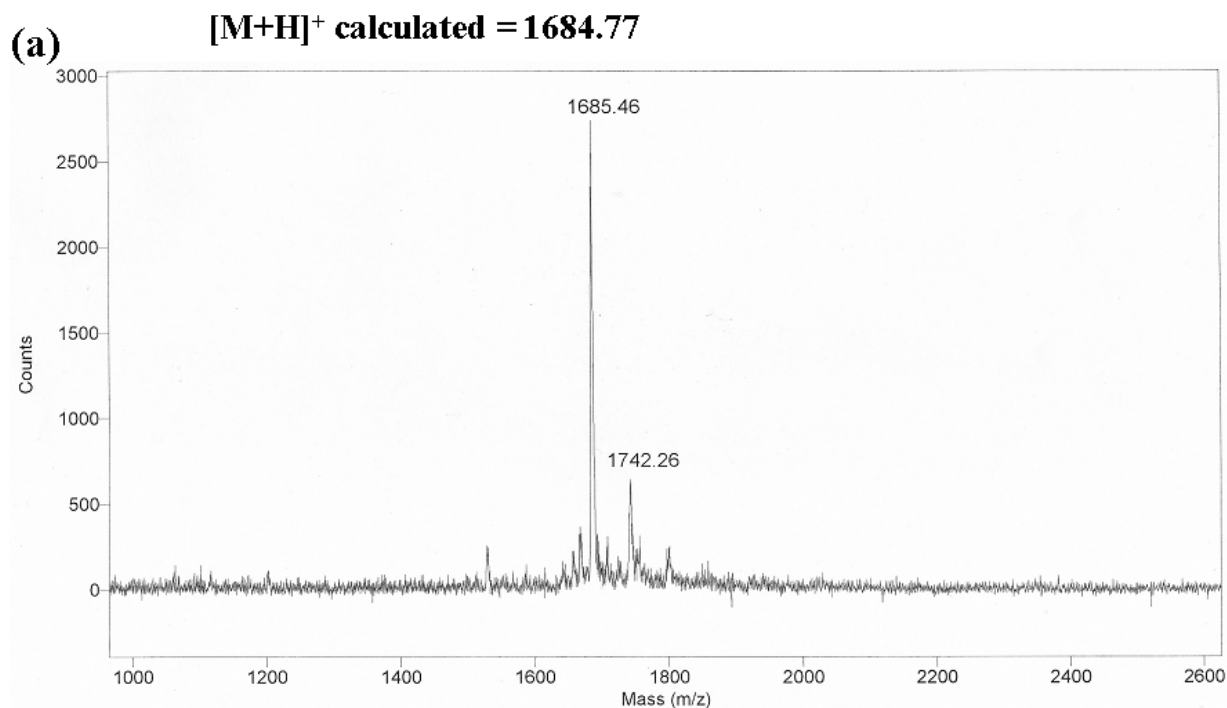
For

Strategy for designing self-assembling peptides to prepare transparent nanofiber hydrogel at neutral pH

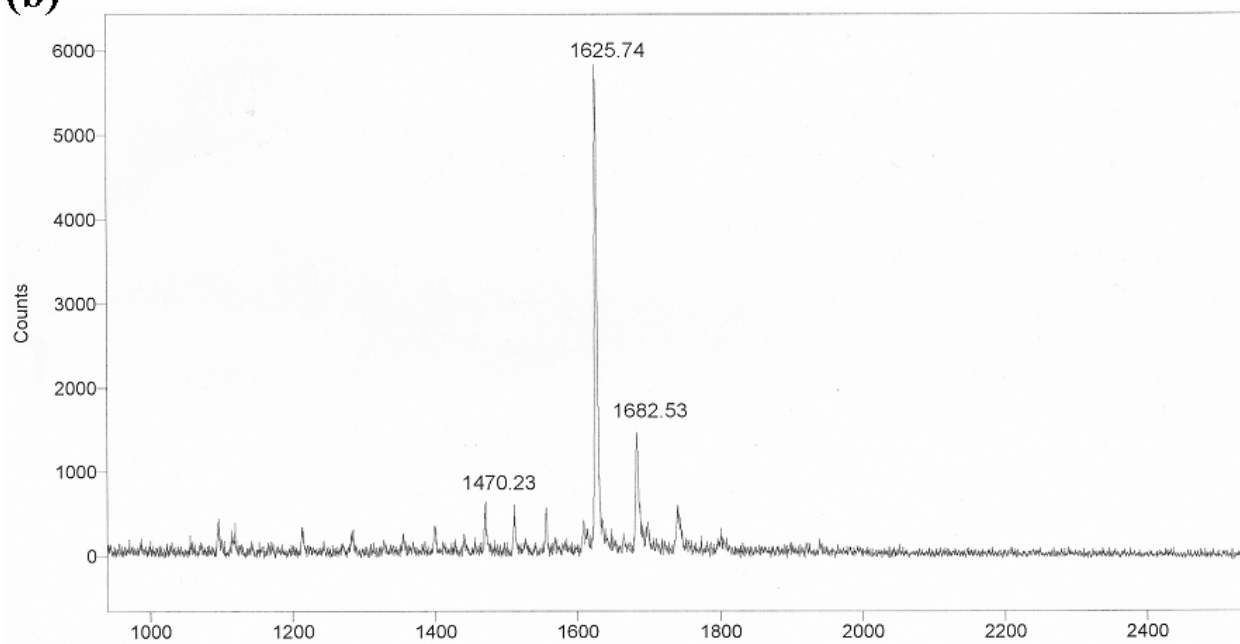
Hidenori Yokoi and Takatoshi Kinoshita

Mass Spectroscopy

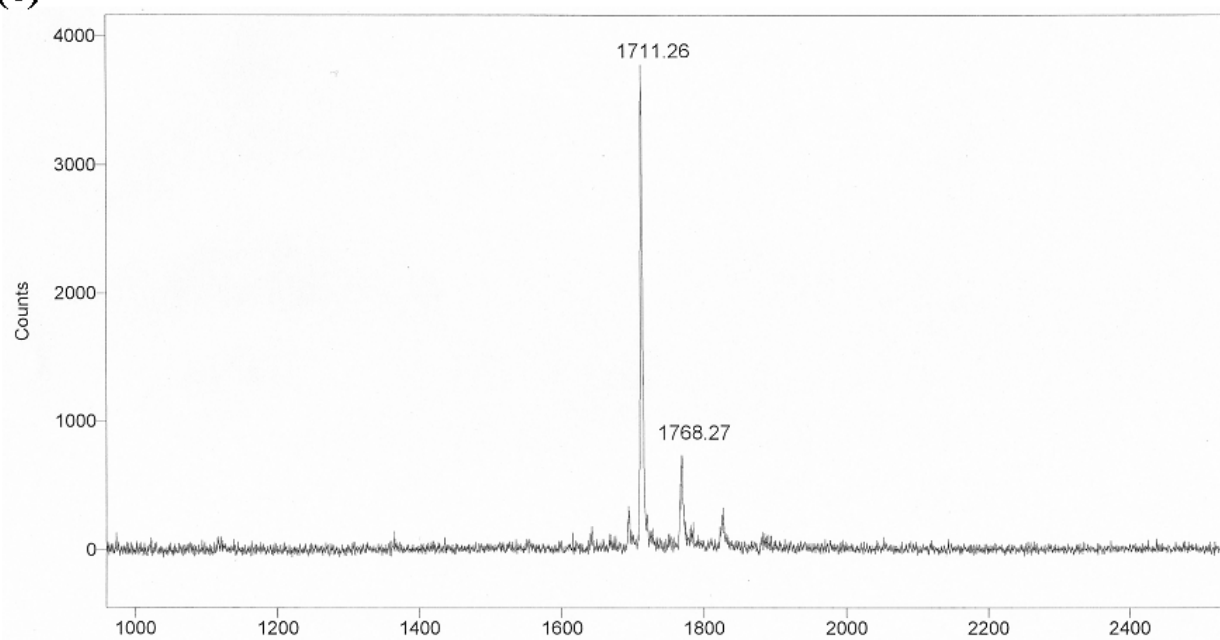
The molecular weight of the crude peptides was measured by matrix-assisted laser desorption/ionization time-of-flight mass spectroscopy (MALDI-TOF-MS) using a Voyager RN BioSpectrometry Workstation (PerSeptive Biosystems Co., Ltd.) or Autoflex III (Bruker Co., Ltd.).



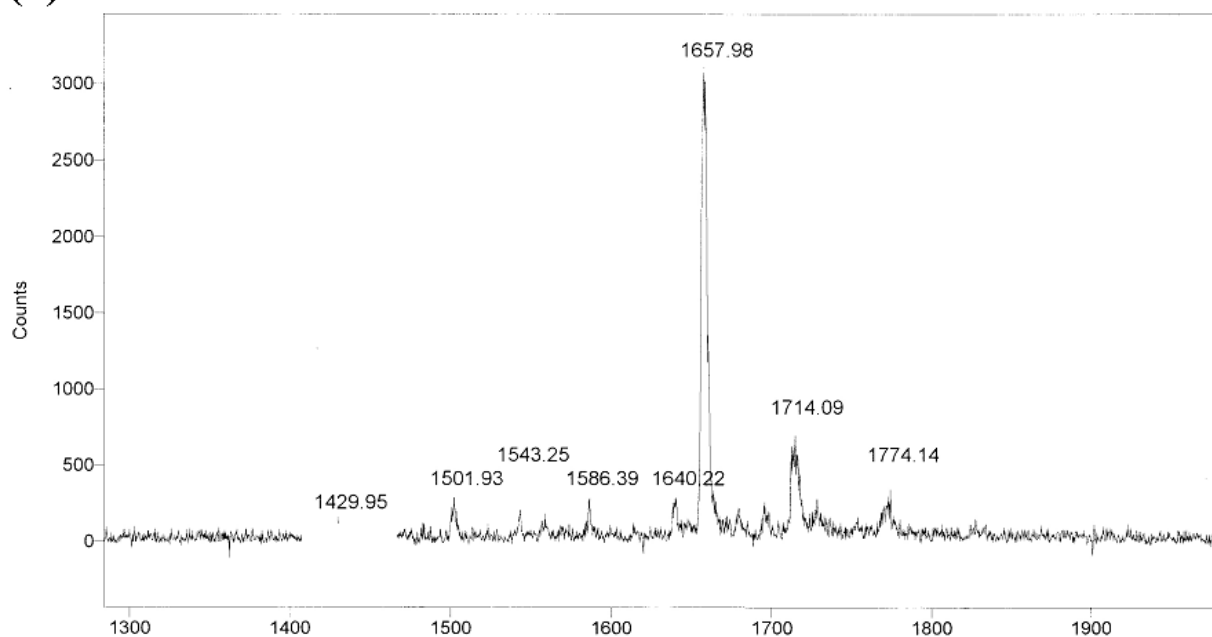
(b) $[M+H]^+$ calculated = 1624.76



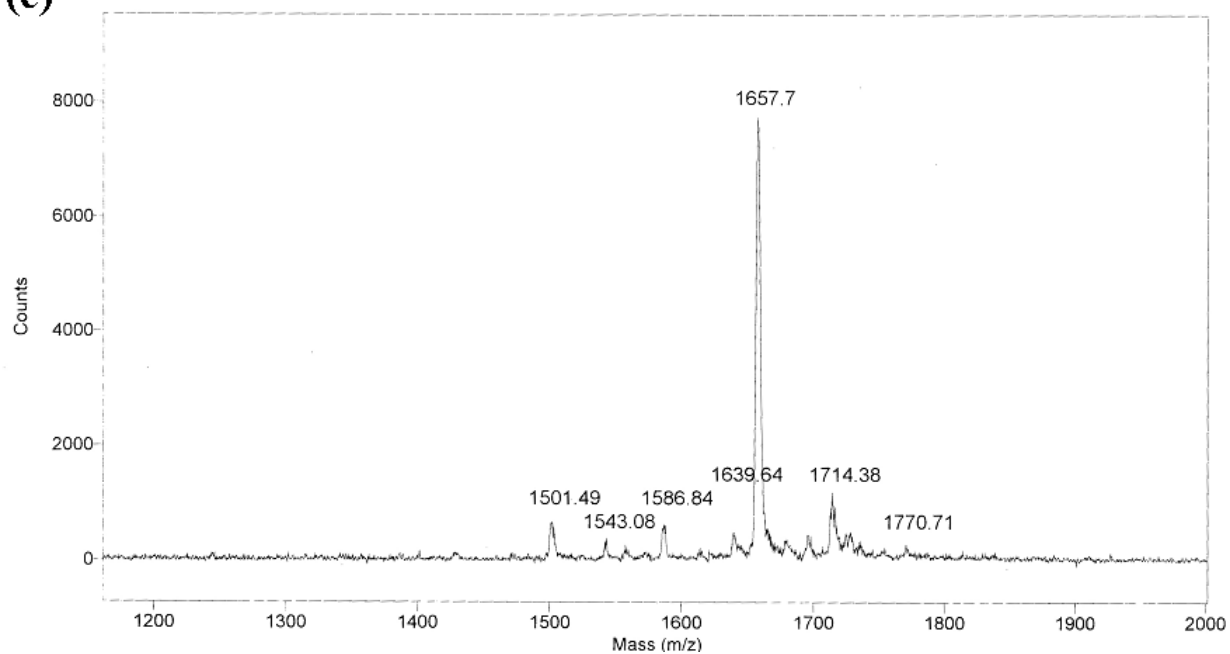
(c) $[M+H]^+$ calculated = 1710.81



(d) $[M+H]^+$ calculated = 1656.76

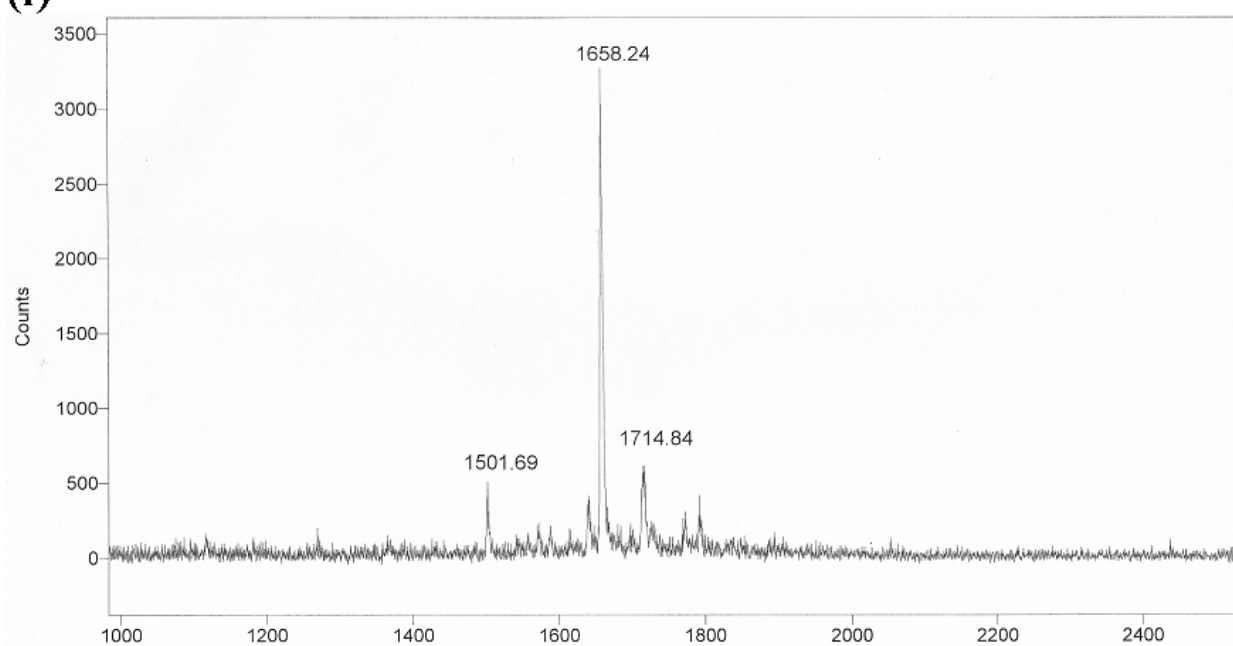


(e) $[M+H]^+$ calculated = 1656.76



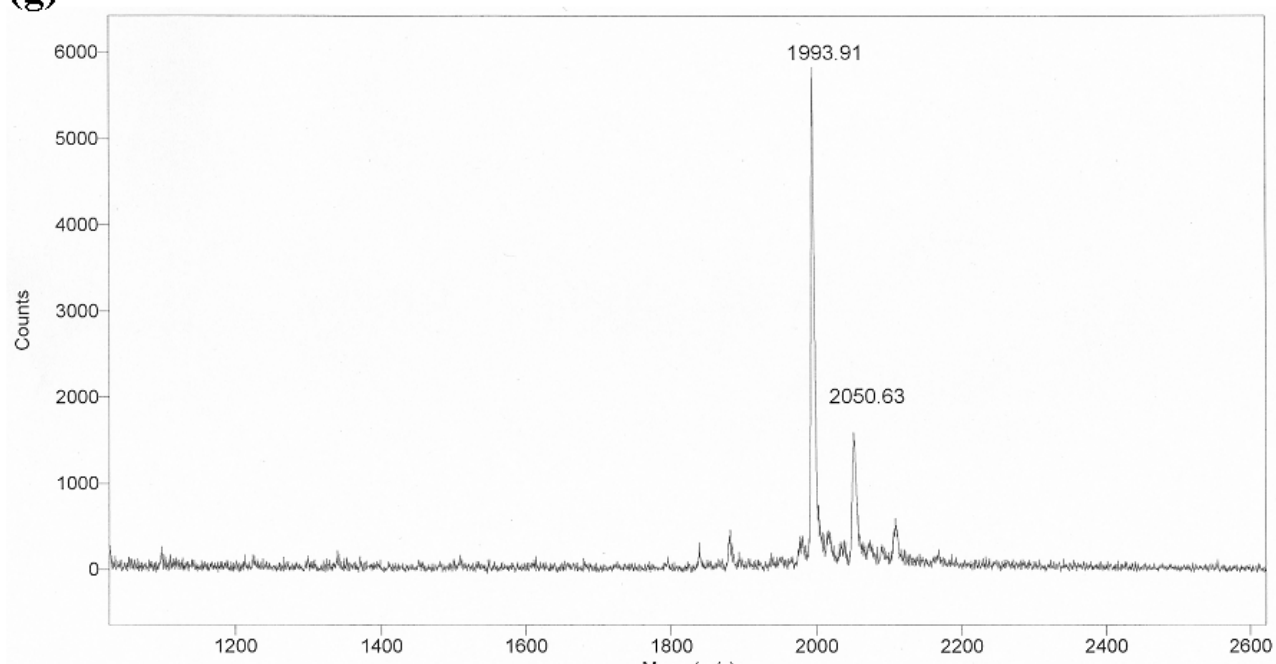
(f)

$[M+H]^+$ calculated = 1656.76

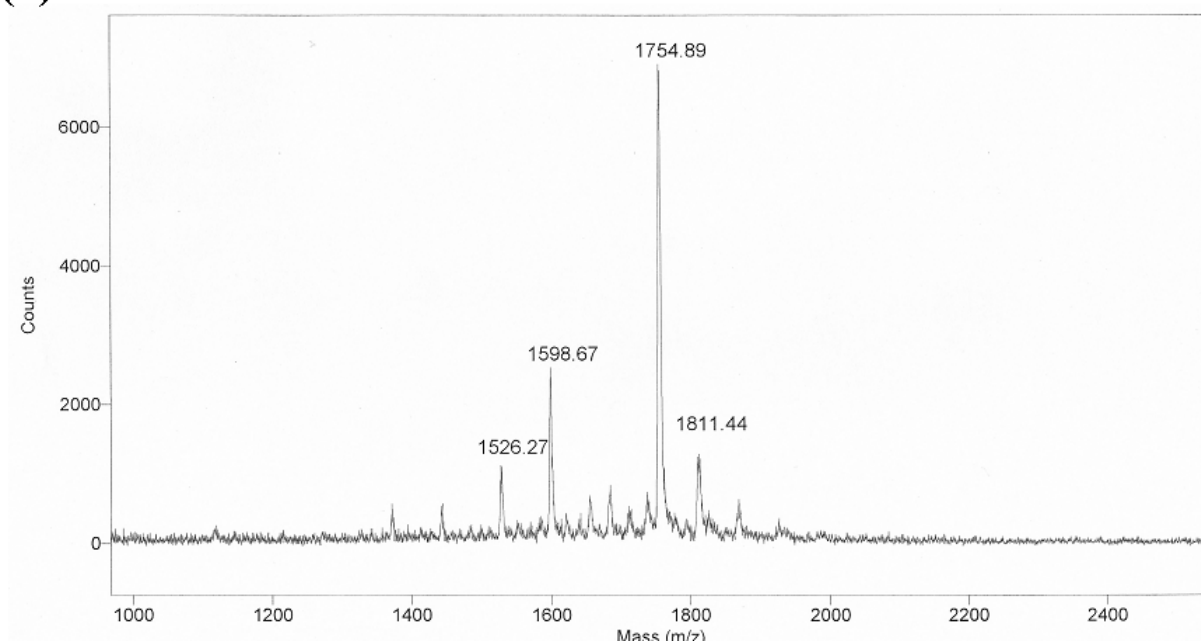


(g)

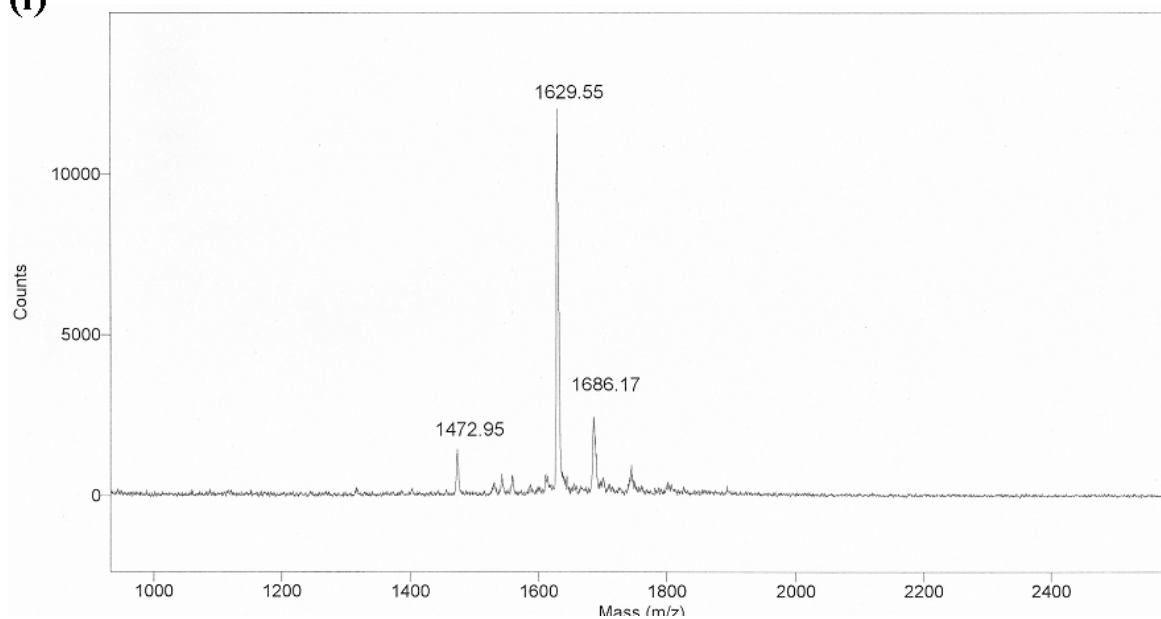
$[M+H]^+$ calculated = 1993.40



(h) $[M+H]^+$ calculated = 1753.88

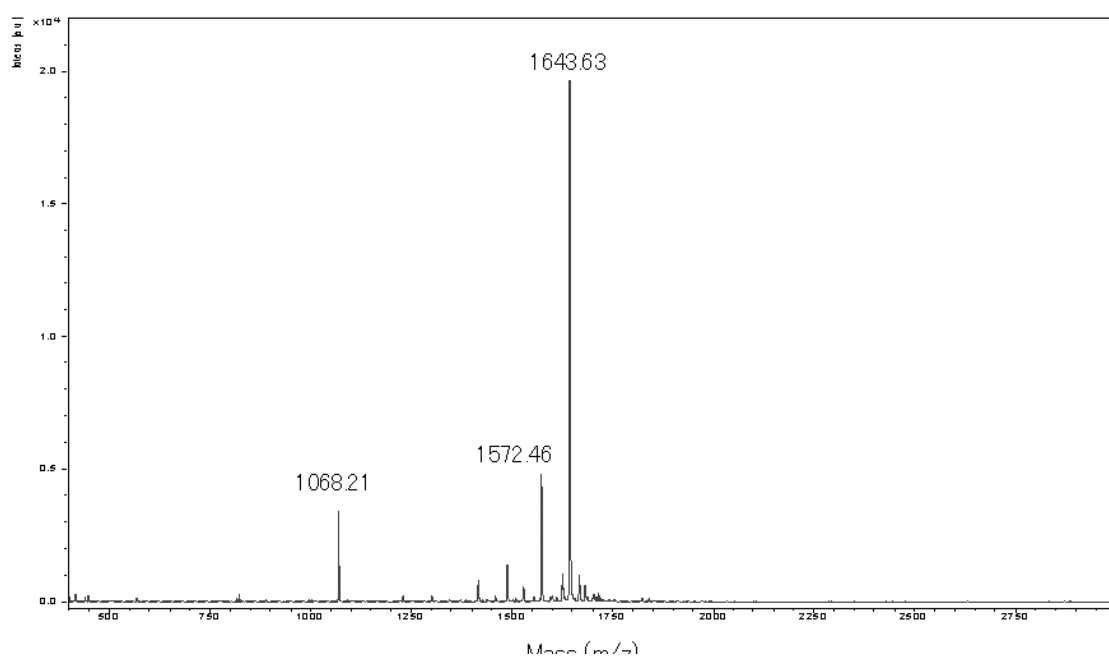


(i) $[M+H]^+$ calculated = 1628.75



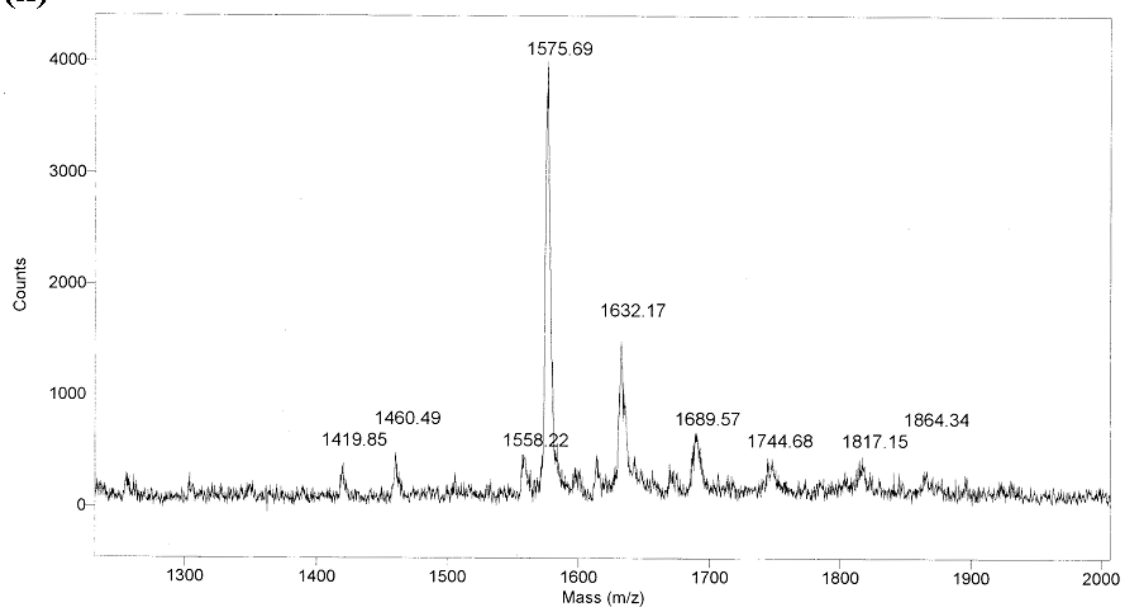
(j)

$[M+H]^+$ calculated = 1643.67



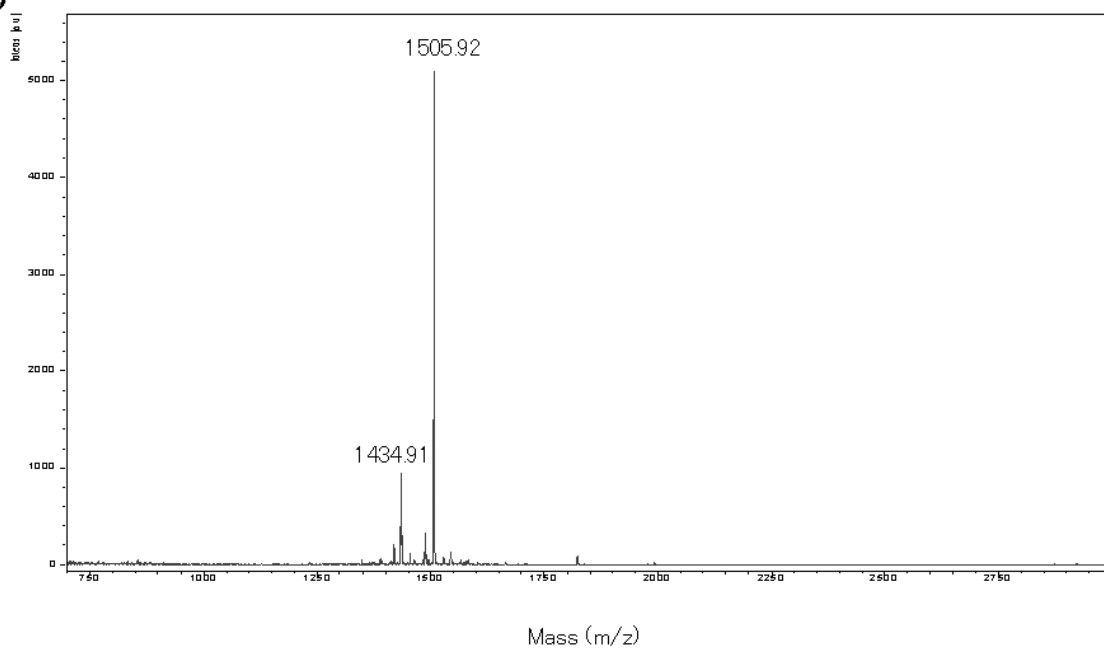
(k)

$[M+H]^+$ calculated = 1574.57



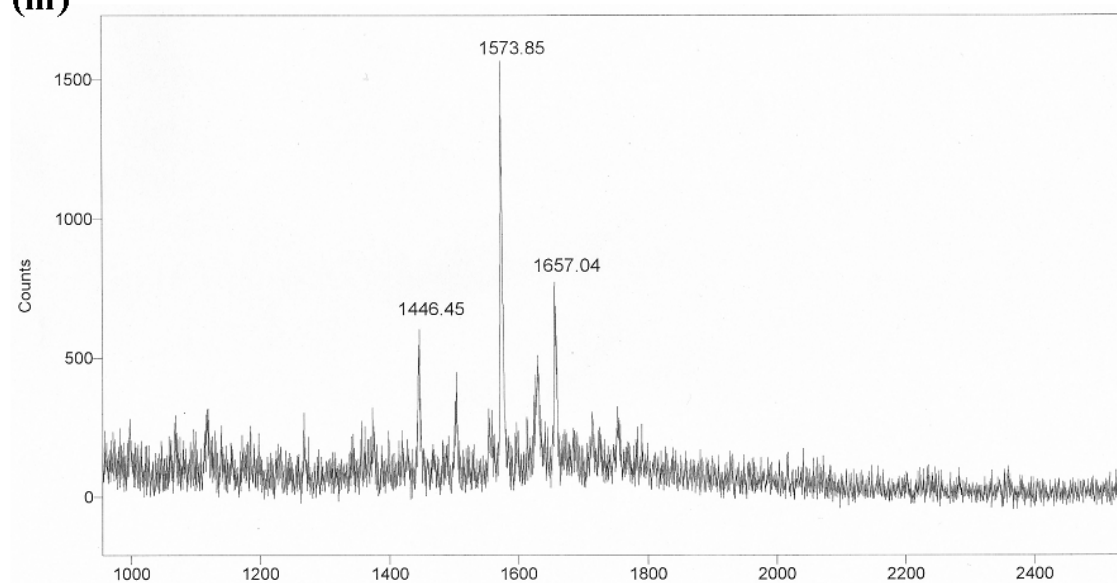
①

$[M+H]^+$ calculated = 1505.46

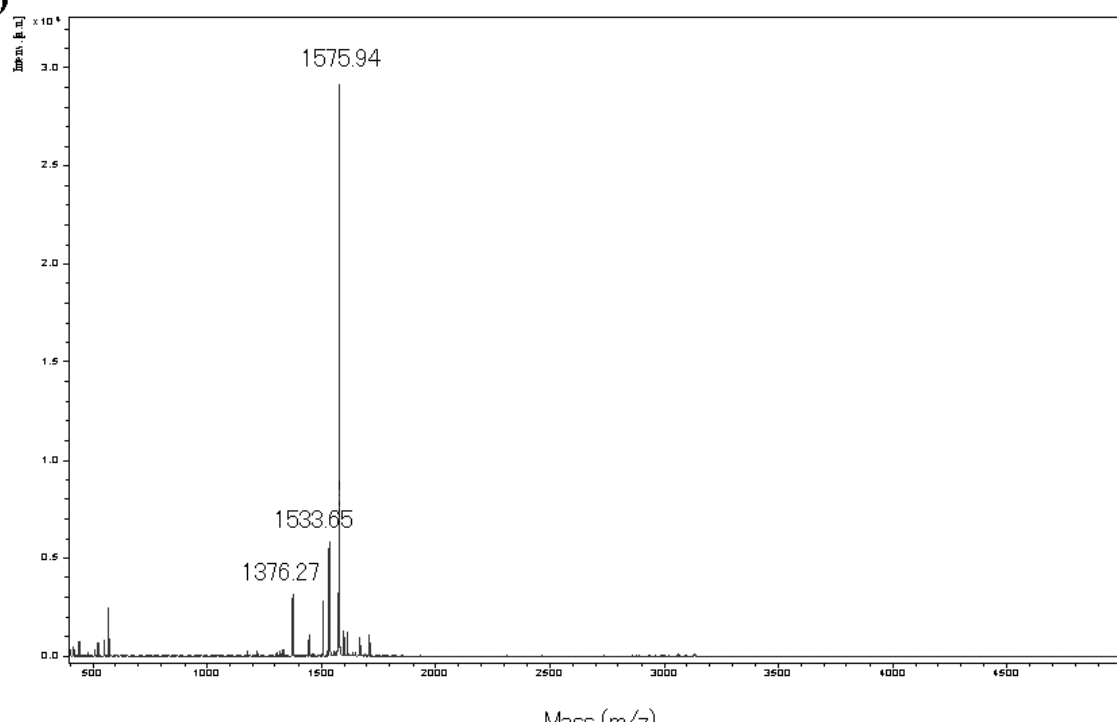


(m)

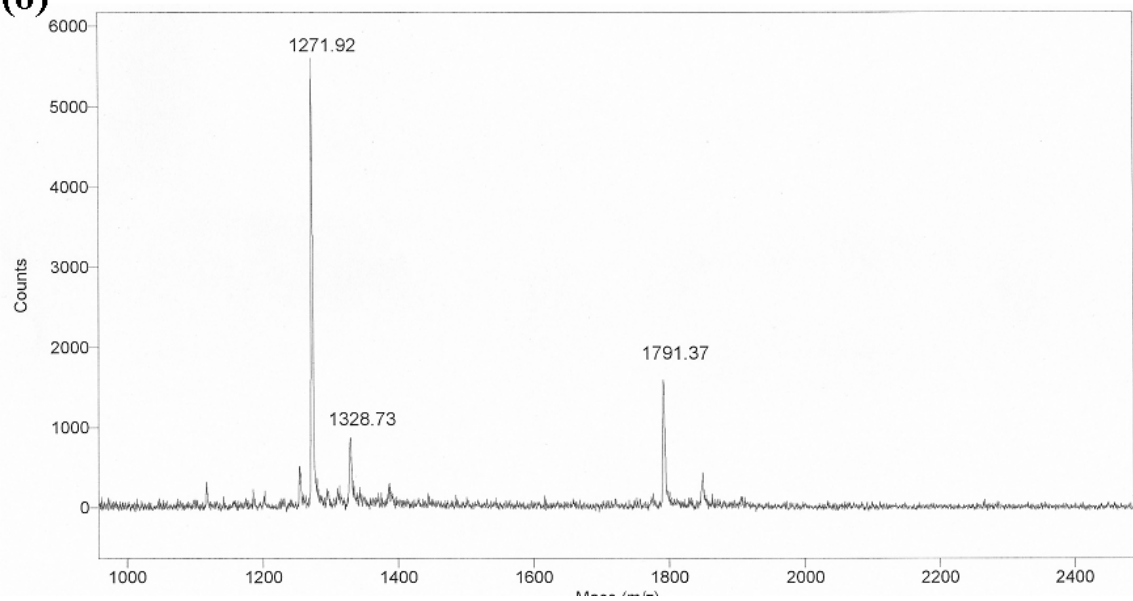
$[M+H]^+$ calculated = 1572.76



(n) $[M+H]^+$ calculated = 1574.65



(o) $[M+H]^+$ calculated = 1271.34



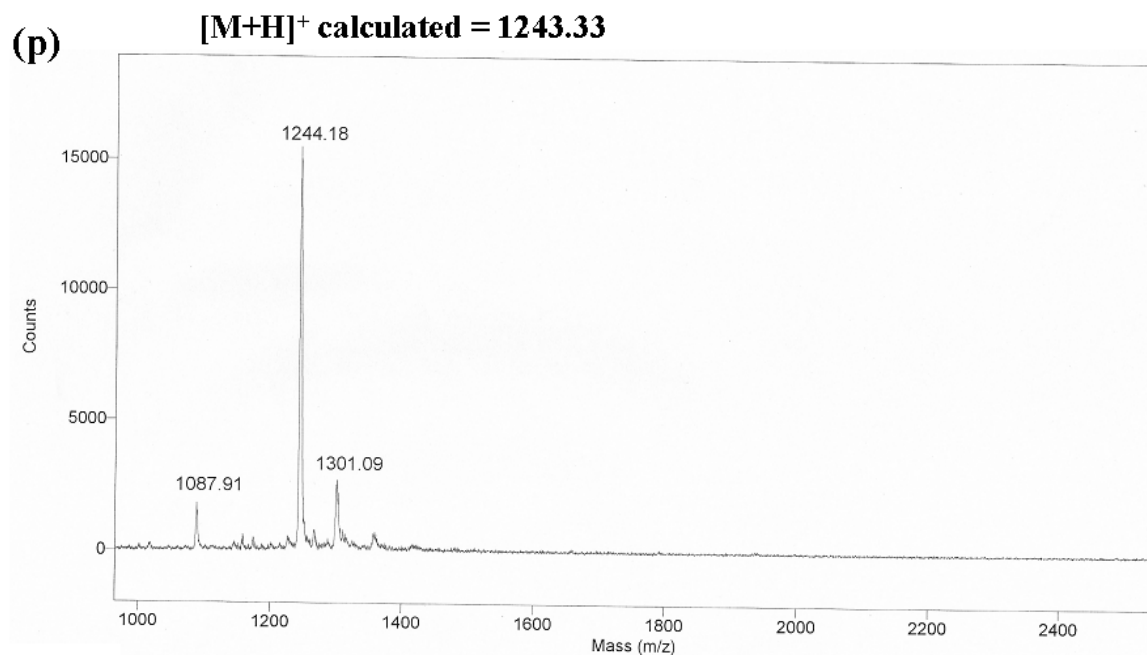


Figure S1. MALDI-TOF mass spectra of peptides. **(a)** 1SA(+1), **(b)** 2AA(+2), **(c)** 3NA(+2), **(d)** 4SA(+2), **(e)** 5SA(+2), **(f)** 6SA(+2), **(g)** 7SL(+2), **(h)** 8RA(+2), **(i)** 9SA(+3), **(j)** 10SA(-1), **(k)** 11SA(-2), **(l)** 12SA(-3), **(m)** 13SA(+2), **(n)** 14SA(-2), **(o)** 15SA(+1), and **(p)** 16SA(+2).

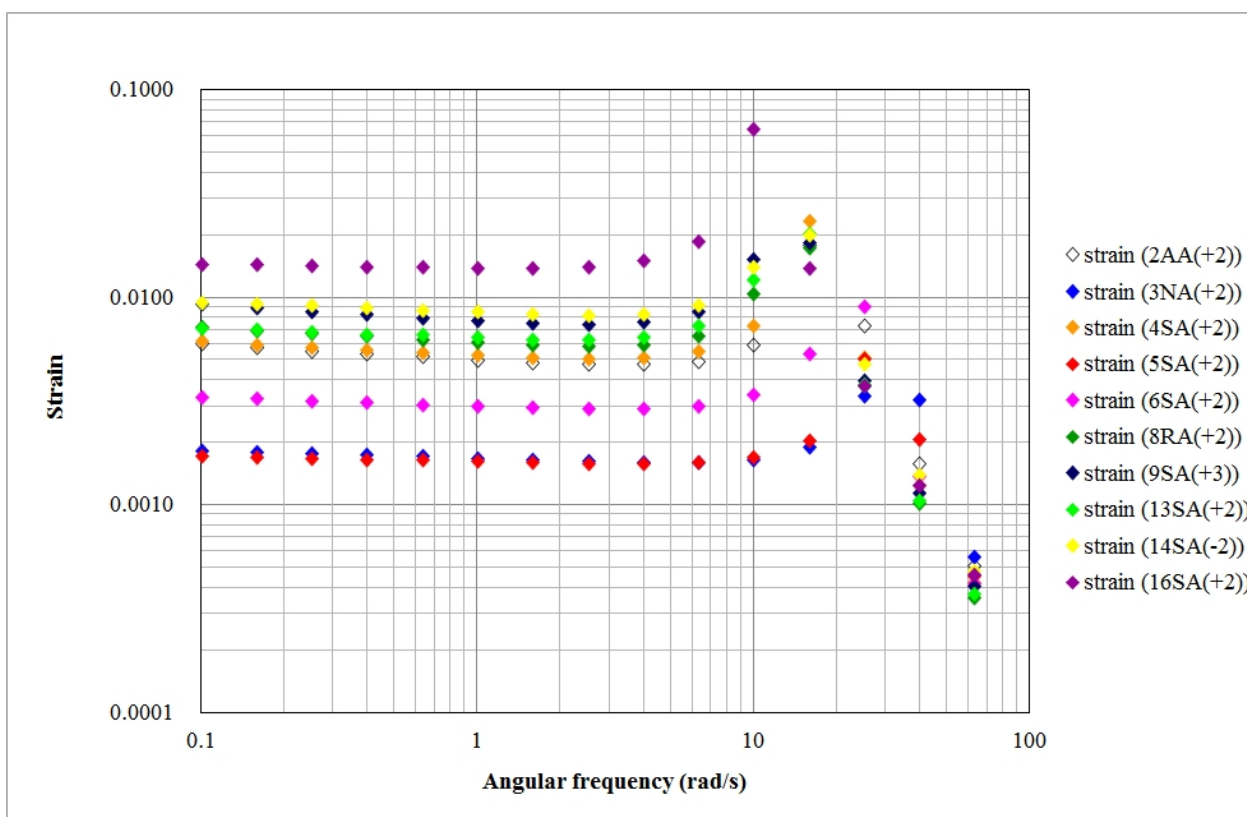


Figure S2. Frequency sweep experiment. Strain was plotted against angular frequency.