

Supporting Information

Deformation of Ordered Mesoporous Silica Structures on Exposure to High Temperatures

J. Lowe, R.T. Baker*

School of Chemistry, University of St Andrews, St Andrews, Fife, KY16 9ST, United Kingdom

*Corresponding author: E: rtb5@st-andrews.ac.uk; T: +44 (0)1334 463899

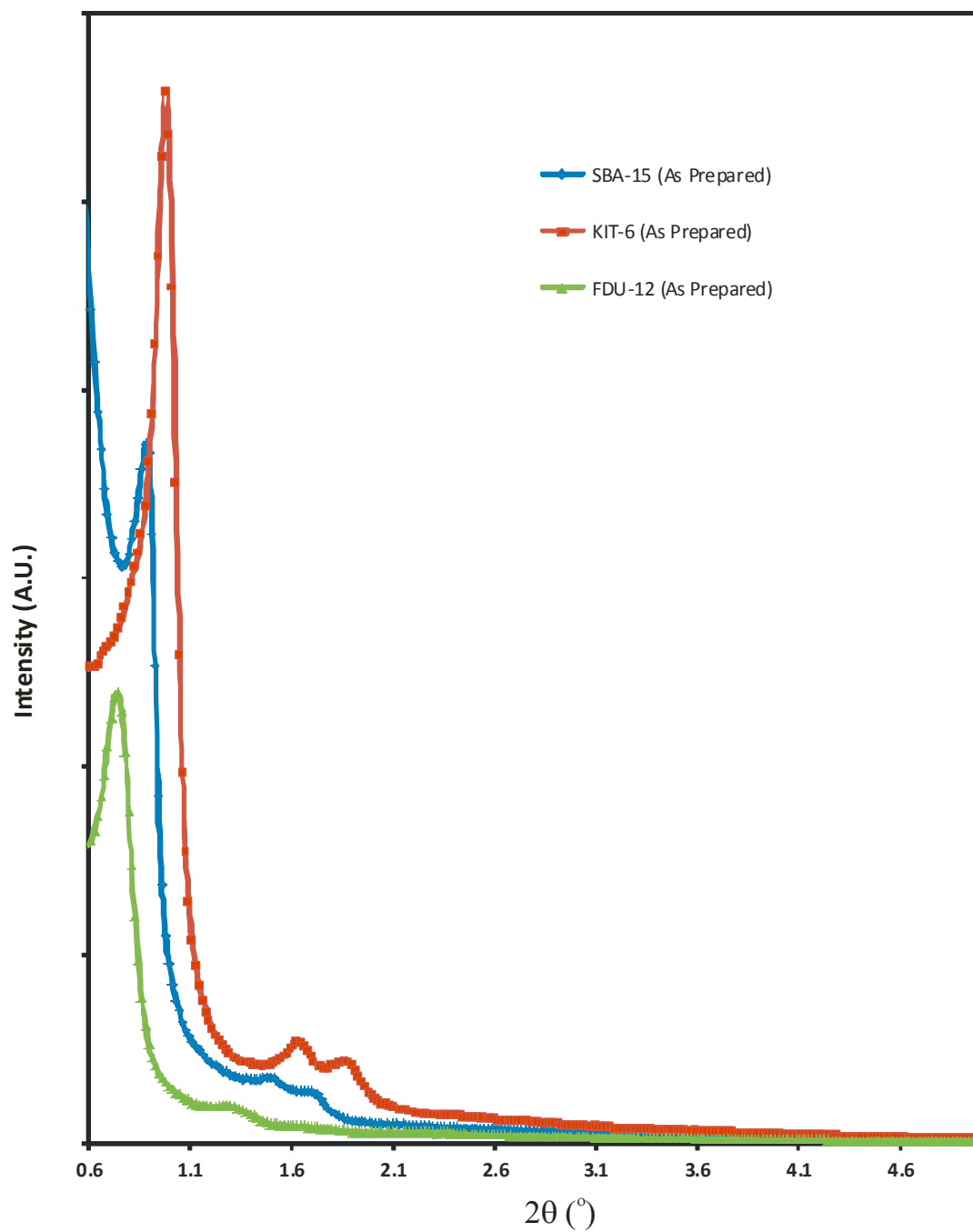


Figure S1 Small Angle XRD patterns for As-Prepared SBA-15, KIT-6 and FDU-12 Templates.

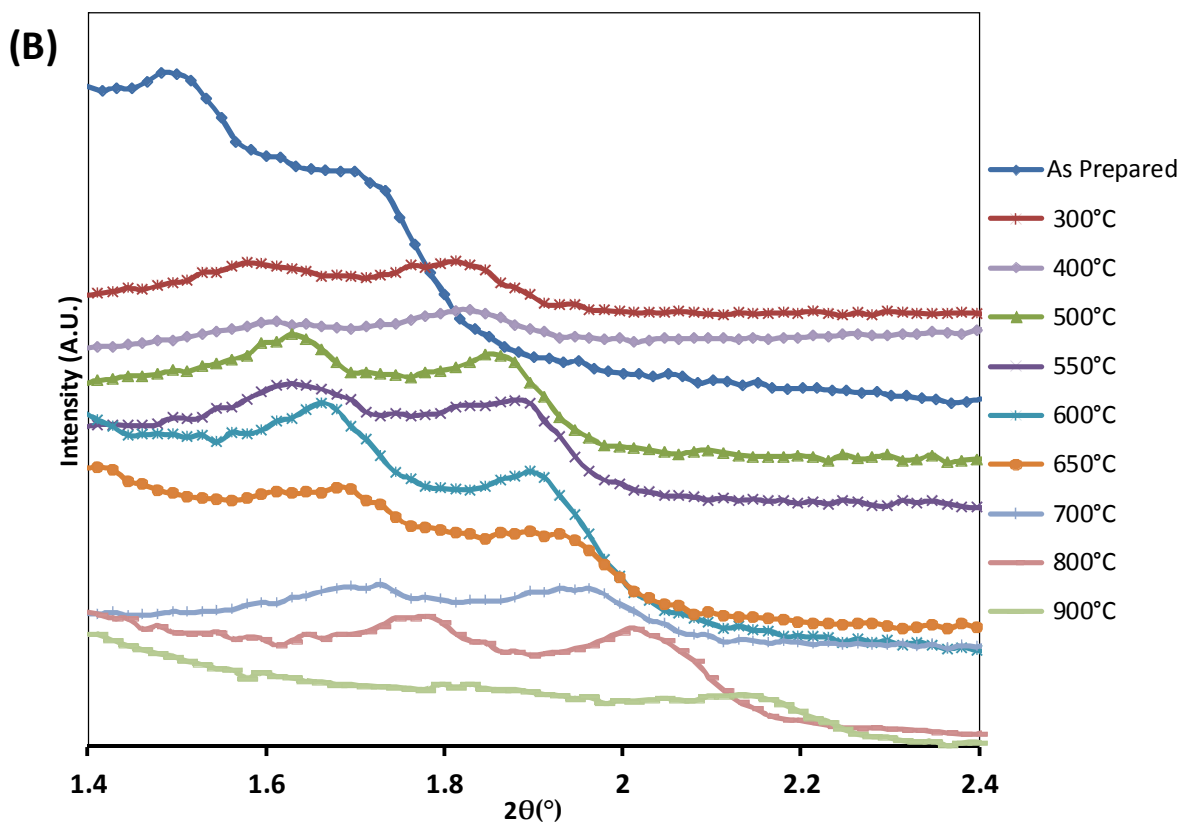
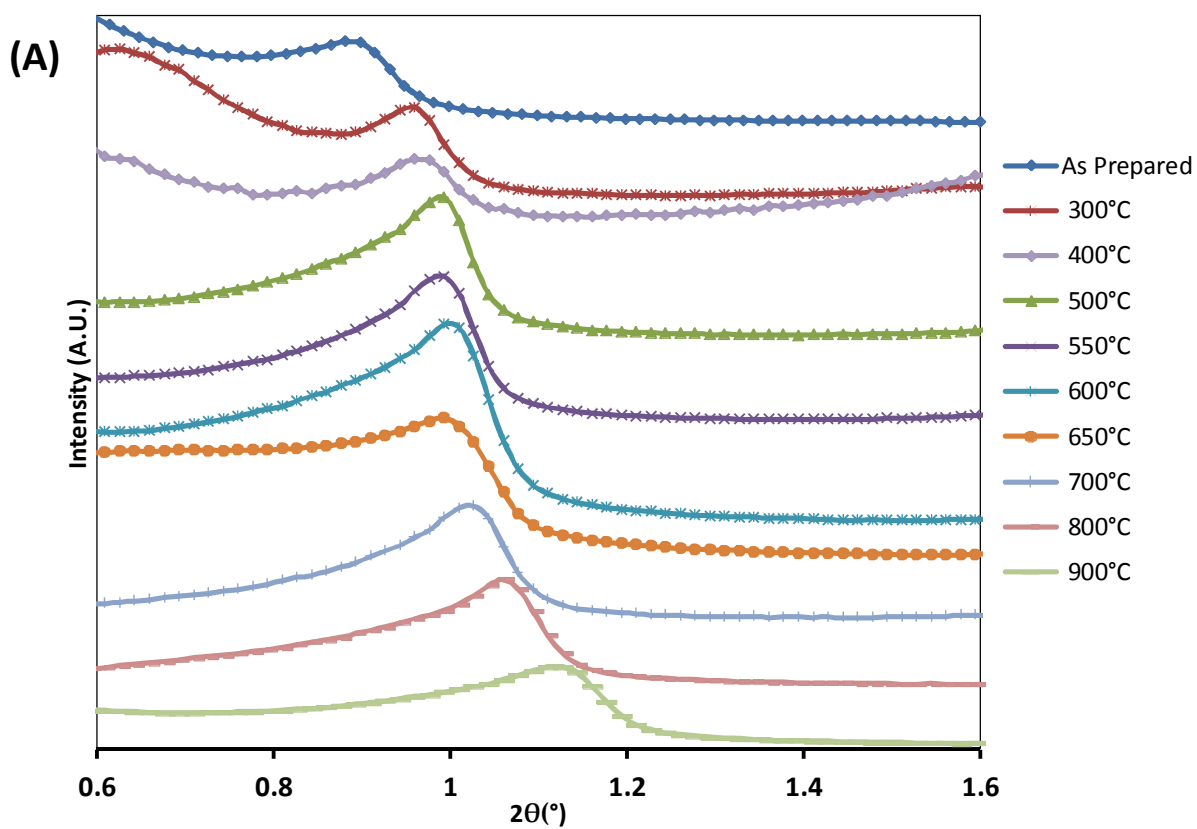


Figure S2 Small Angle XRD patterns for SBA-15 thermal treatments showing (A) The main peak (100) and (B) the second (111) and third (200) peaks (Intensity multiplied by a factor of 20), Plots are displaced along intensity axis for clarity.

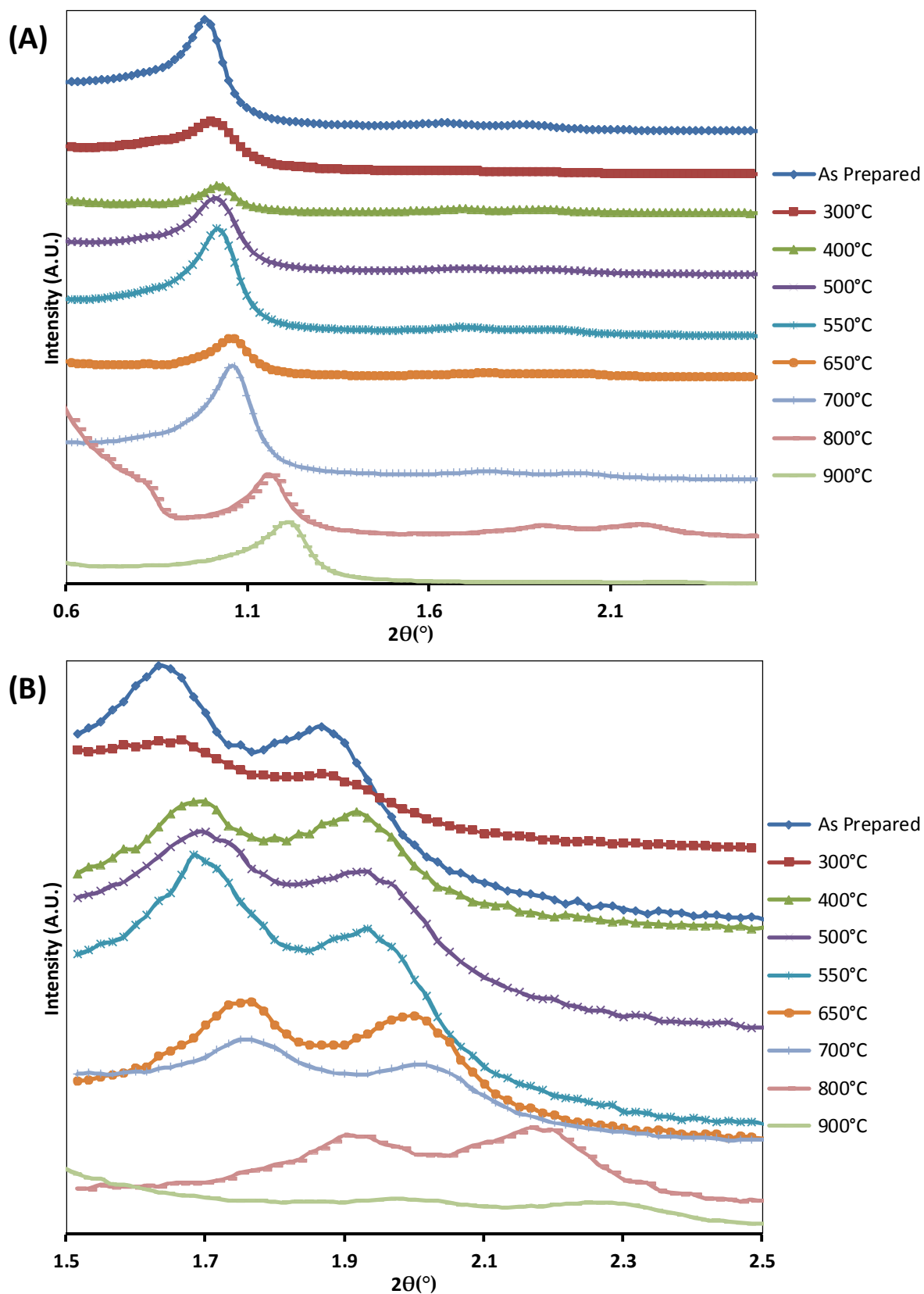


Figure S3 Small Angle XRD patterns for KIT-6 thermal treatments showing (A) The main peak (211) and (B) the second (400) and third (332) peaks (Intensity multiplied by a factor of 30), Plots are displaced along intensity axis for clarity.

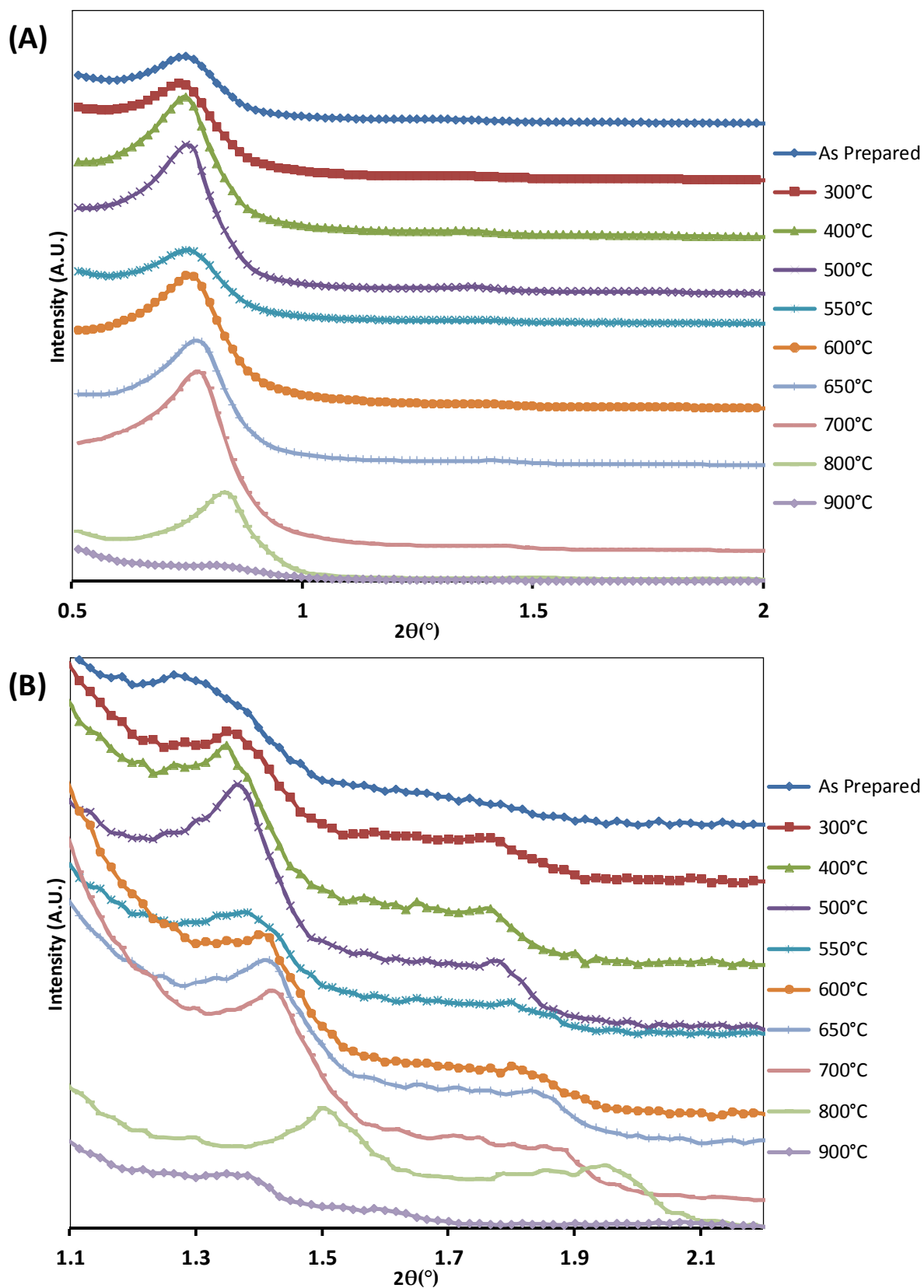


Figure S4 Small Angle XRD patterns for FDU-12 thermal treatments showing (A) The main peak (111) and (B) the second (220) peak (Intensity multiplied by a factor of 40), Plots are displaced along intensity axis for clarity.