

Supplementary Information (SI)

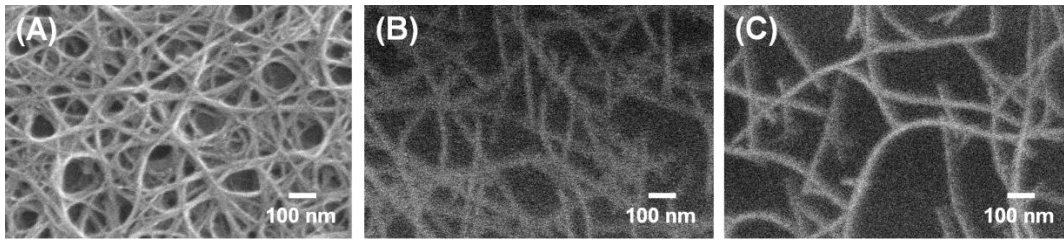


Figure S1 SEM images of (A) 66%, (B) 90% and (C) 99% enriched SWCNT films.

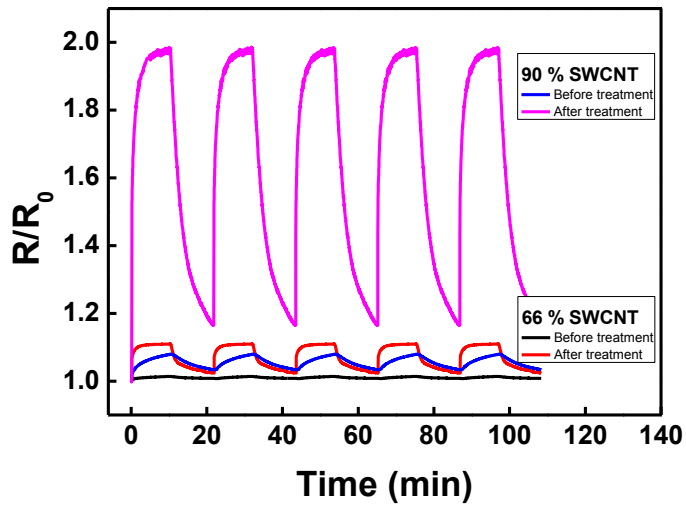


Figure S2 The reproducible responses of 66% and 90% enriched SWCNT sensors before and after the oxygen plasma treatment at an NH_3 concentration of 22.6 ppm.

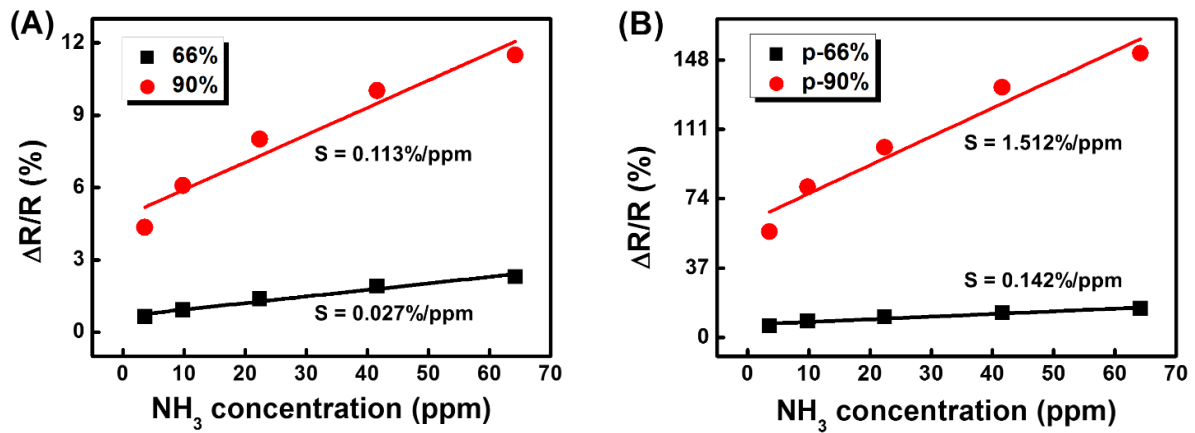


Figure S3 Sensitivity of (A) untreated and (B) oxygen plasma-treated SWCNT gas sensors.