

Fig. S1. Characterizations of the nZVI. (a) TEM, (b) XRD, (c) XPS analysis.

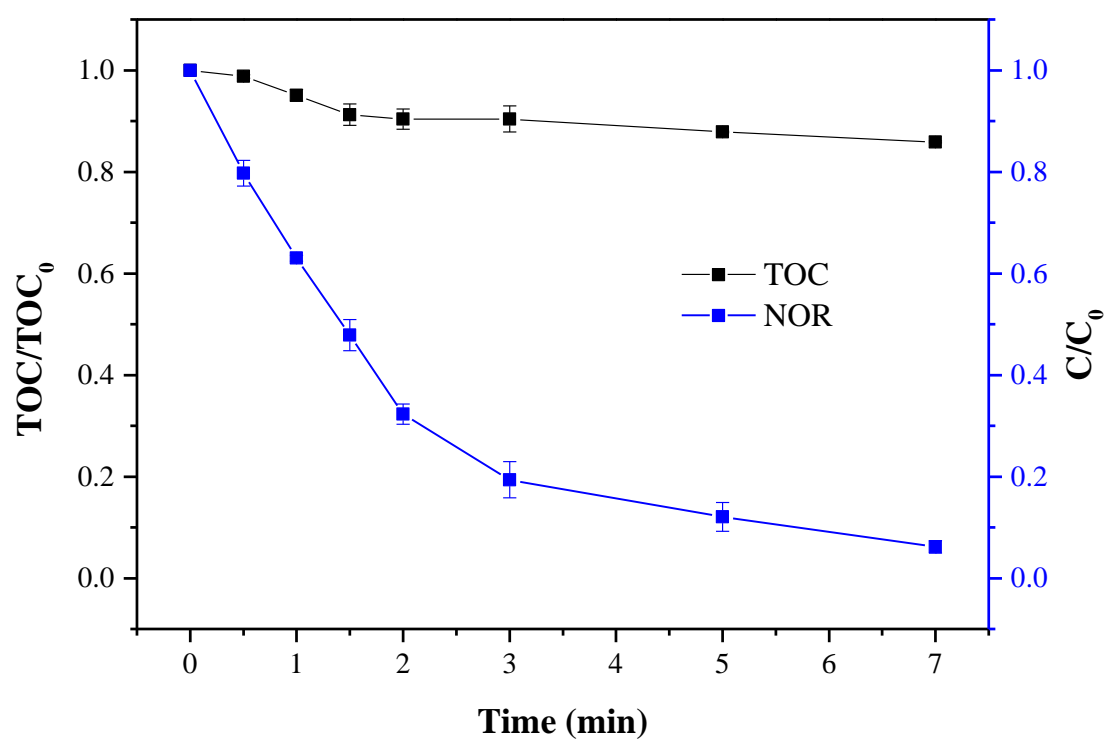


Fig. S2. Change profiles of TOC and NOR concentration versus time in the nZVI/PS

system. Operating conditions: $C_0 = 100$ mg/L, pH = 7.0, $T = 25$ °C, $[PS]_0 = 12$ mM, $nZVI = 0.1$ g/L.

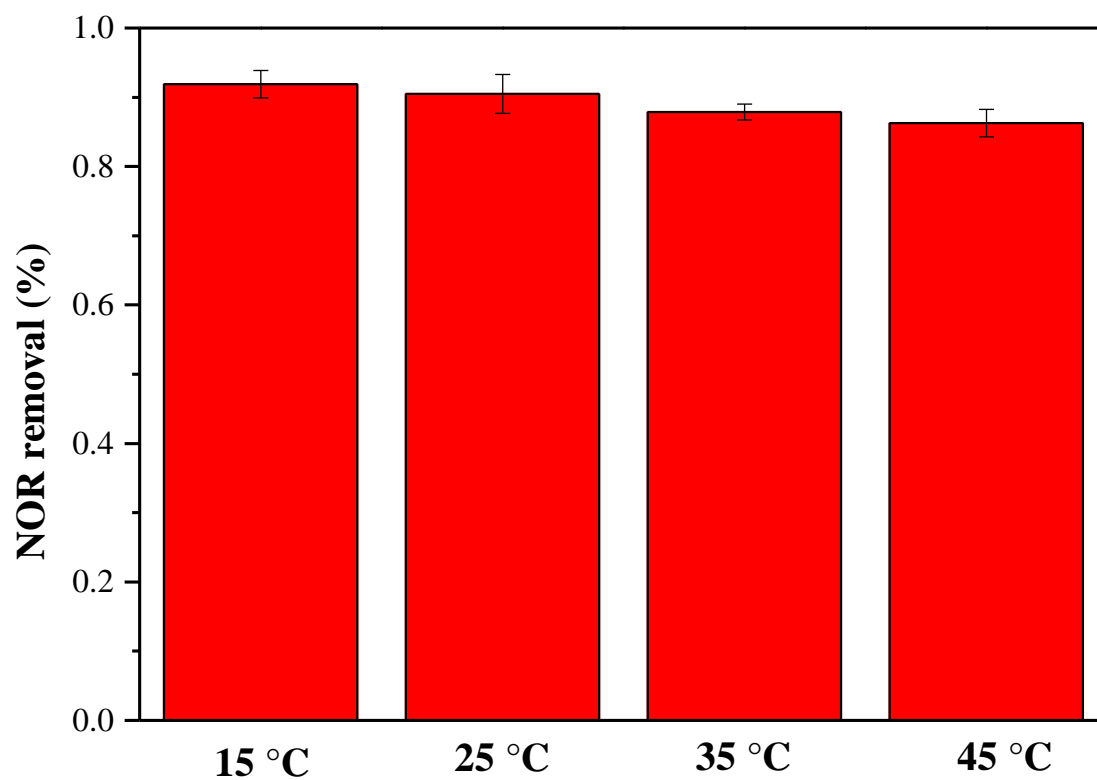
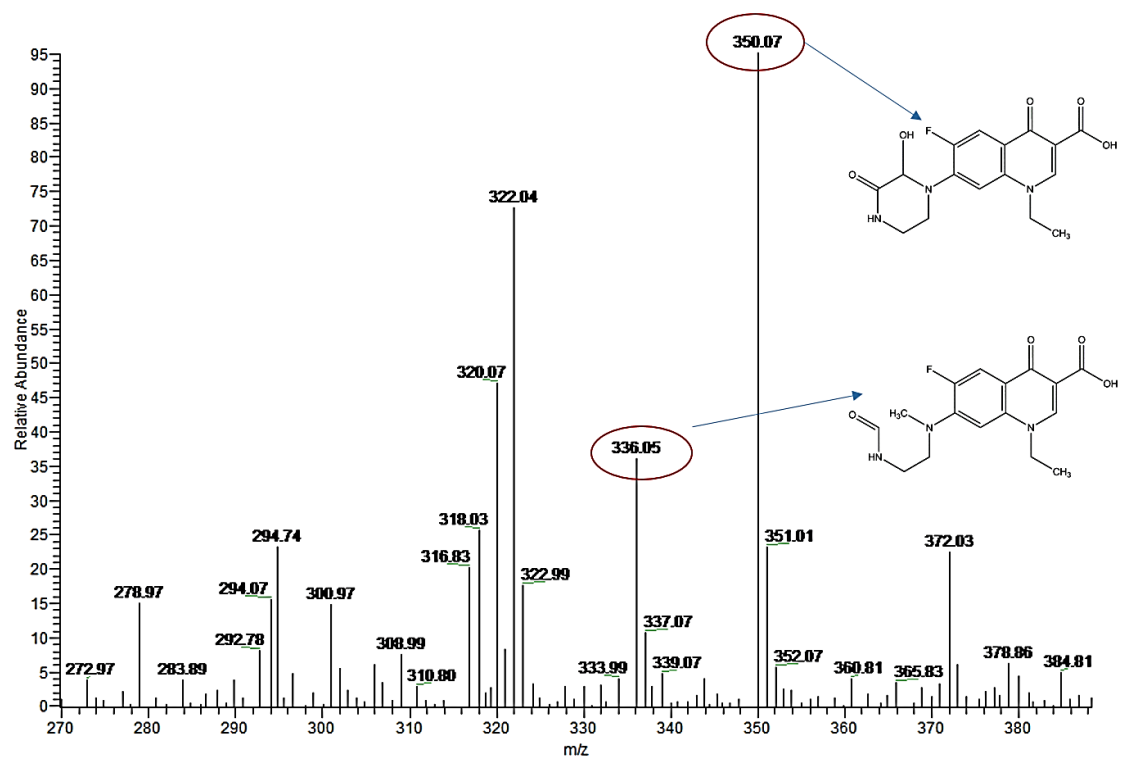
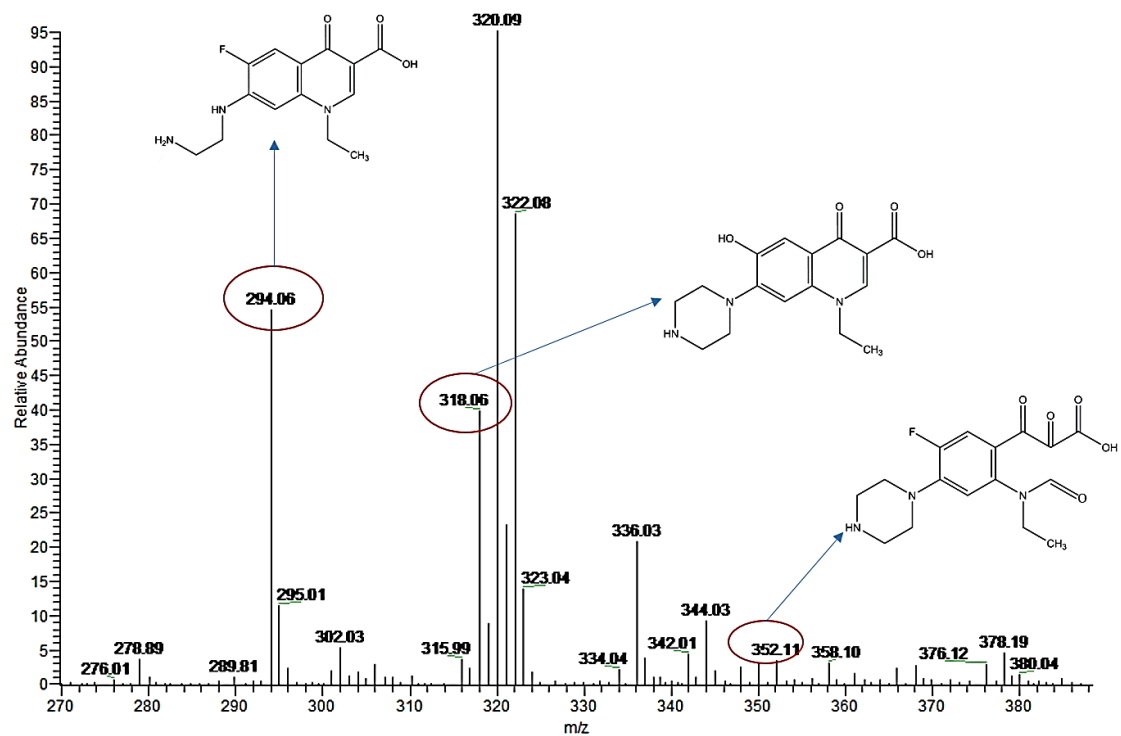
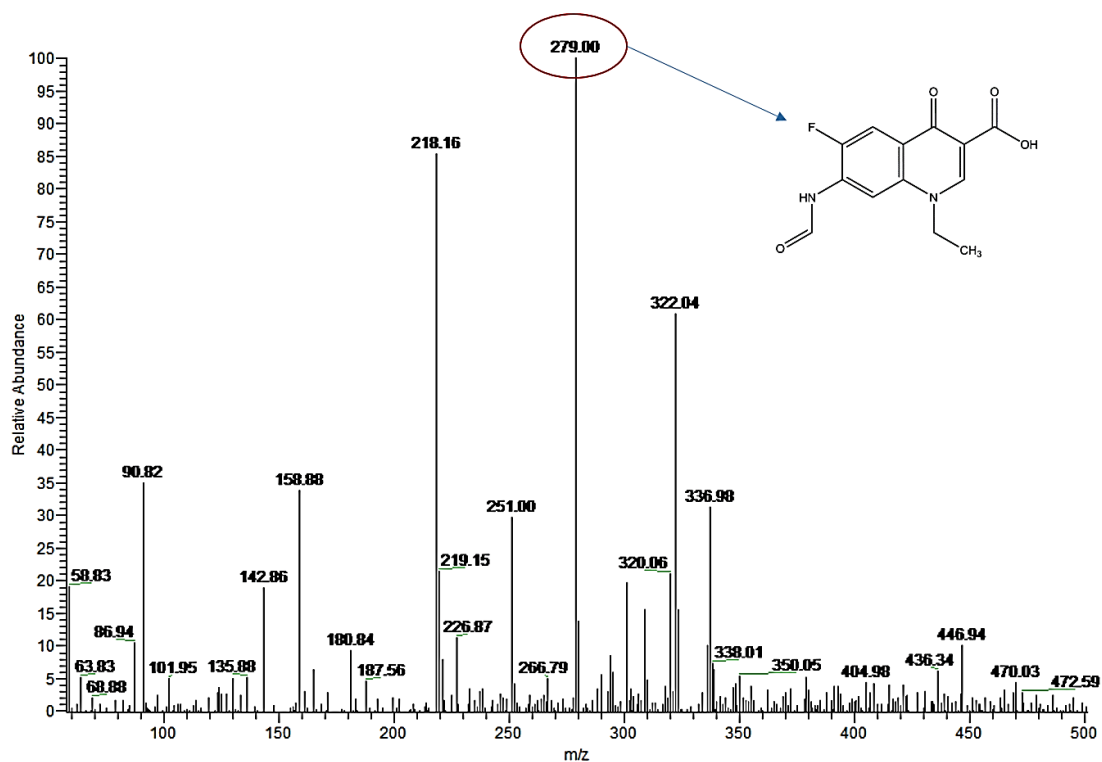
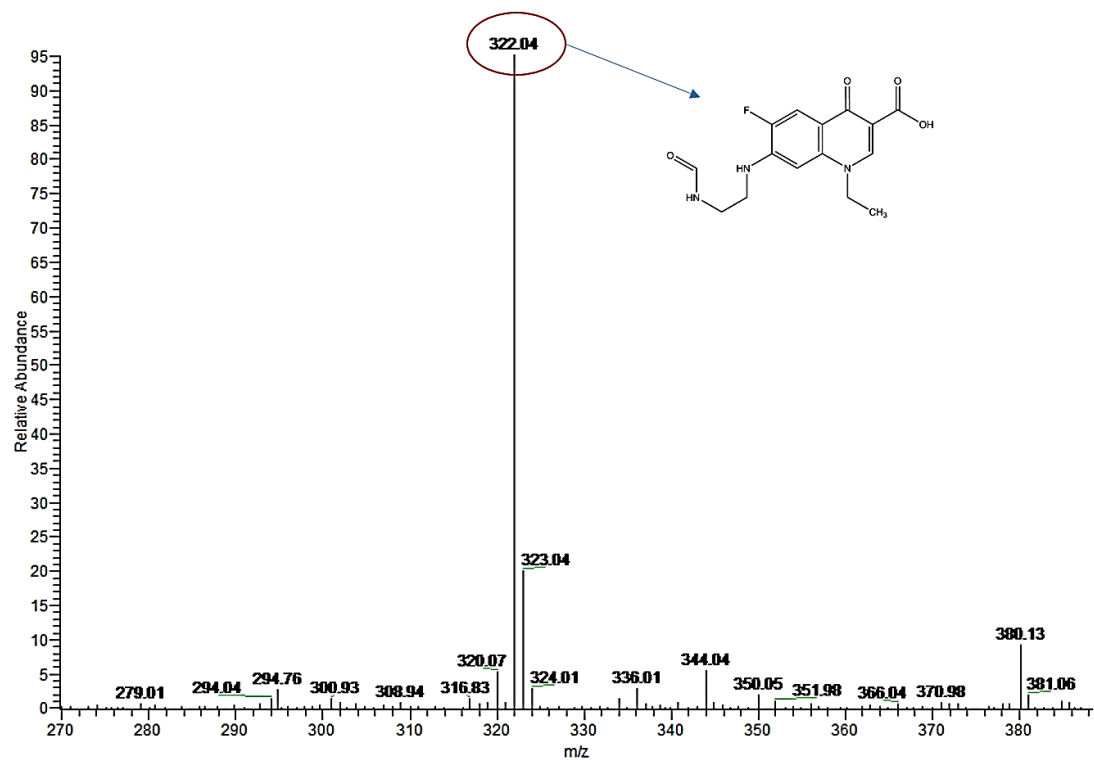


Fig. S3. The degradation efficiency of NOR in the PS system. Operating conditions: $C_0 = 100$ mg/L, pH = 7.0, $[PS]_0 = 12$ mM.





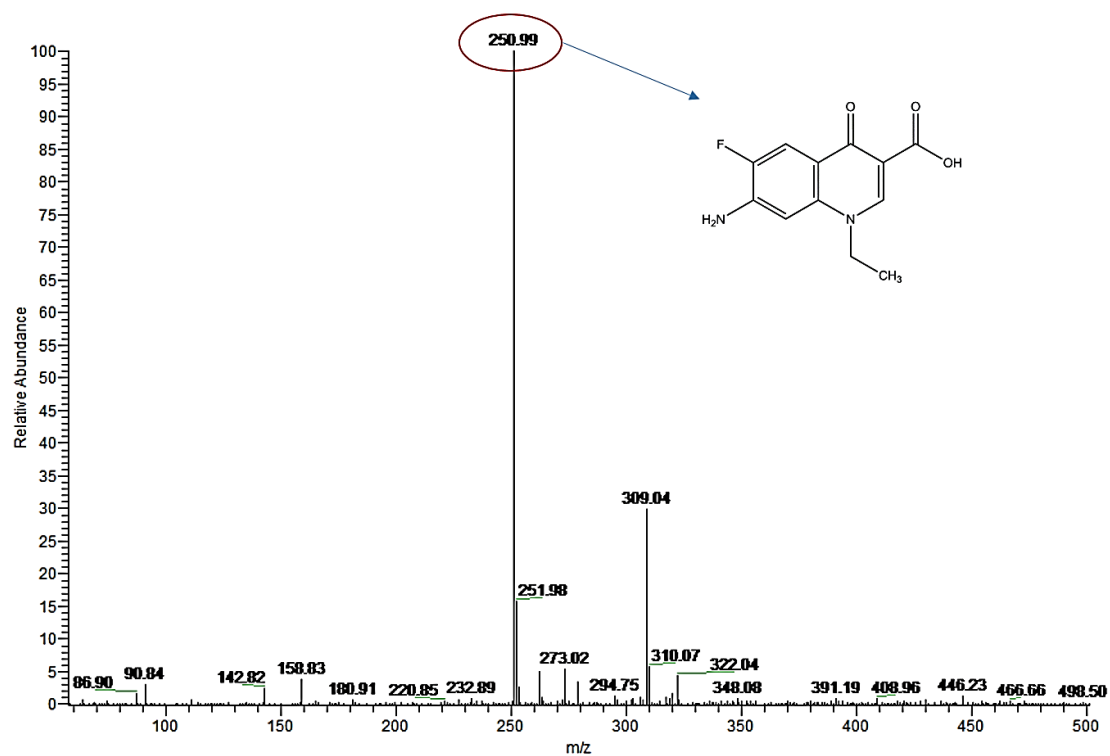


Fig. S4. MS spectra of degradation products of NOR in the nZVI-BC/PS system.

Graph abstract

