

Figure. S1

The GAS5 expression in different stages of glioma (a) and the correlation of GAS5 methylation level and GAS5 expression level in GBM (b) and LGG (c) tissues.

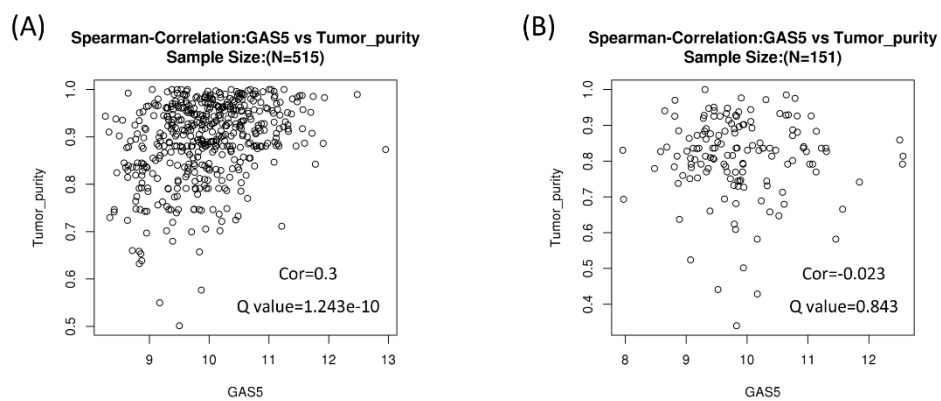


Figure. S2

The associations between GAS5 expression level and tumor purity in LGG (a) and GBM (b) patients.

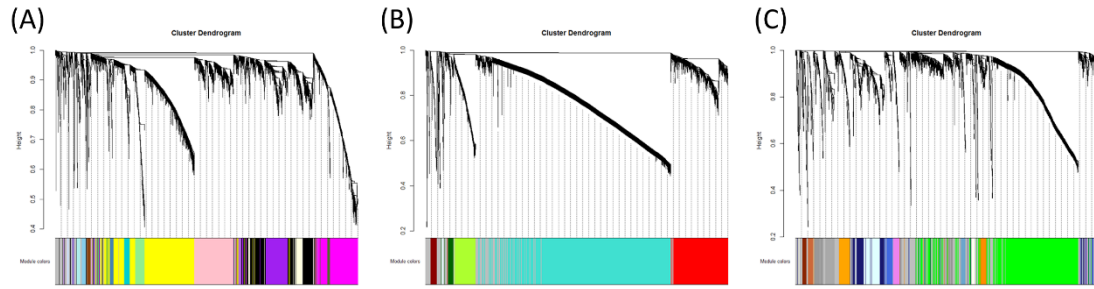


Figure. S3
The dendrogram of modules identified by WGCNA.

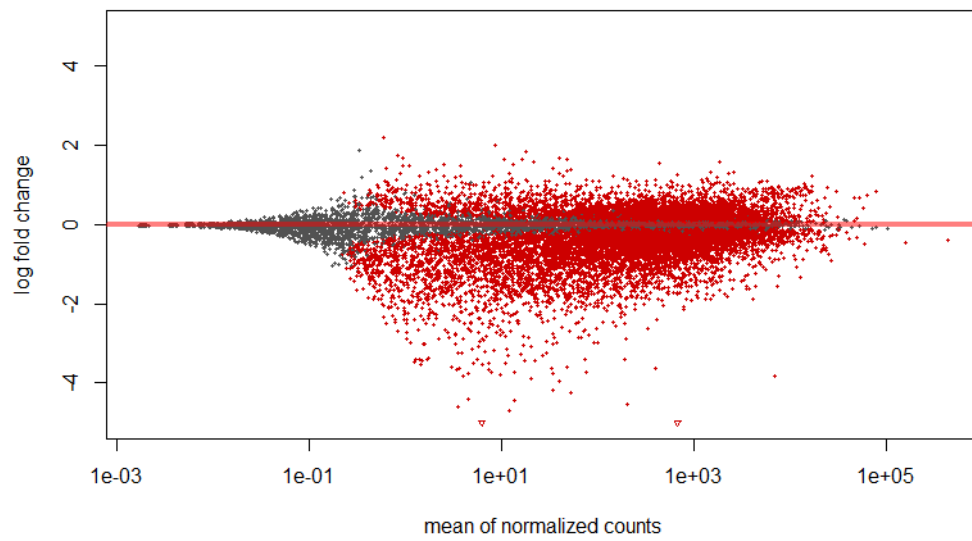


Figure. S4
The MAplot of significant differentially expressed genes in high GAS5 expression and low GAS5 expression groups from LGG tissues.