

Supplementary data:

Figure legend:

Figure 1:

a) *RAB27B* ($p < 0.02$) and b) *TSAP6* ($p < 0.03$) mRNA expression in the ES-2 cell line.

Figure 2:

Images of the actual western blots of figure 2A-2C

Table 1:

Isolated tumor nodules ranges in mm in the various organs

Fig.1:

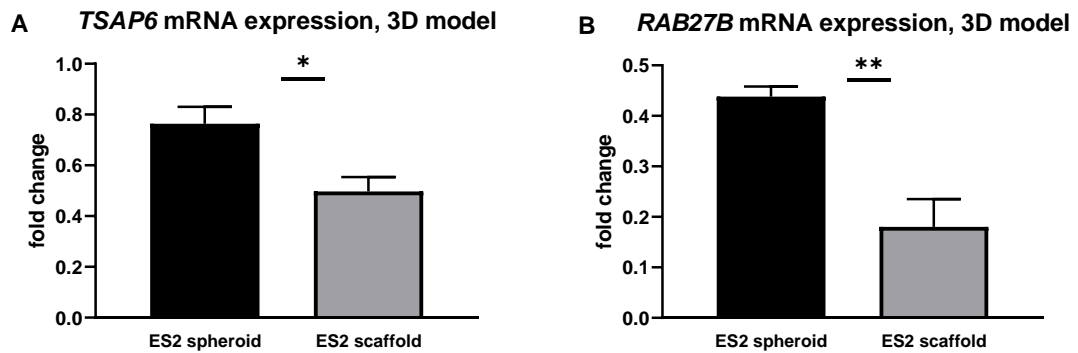
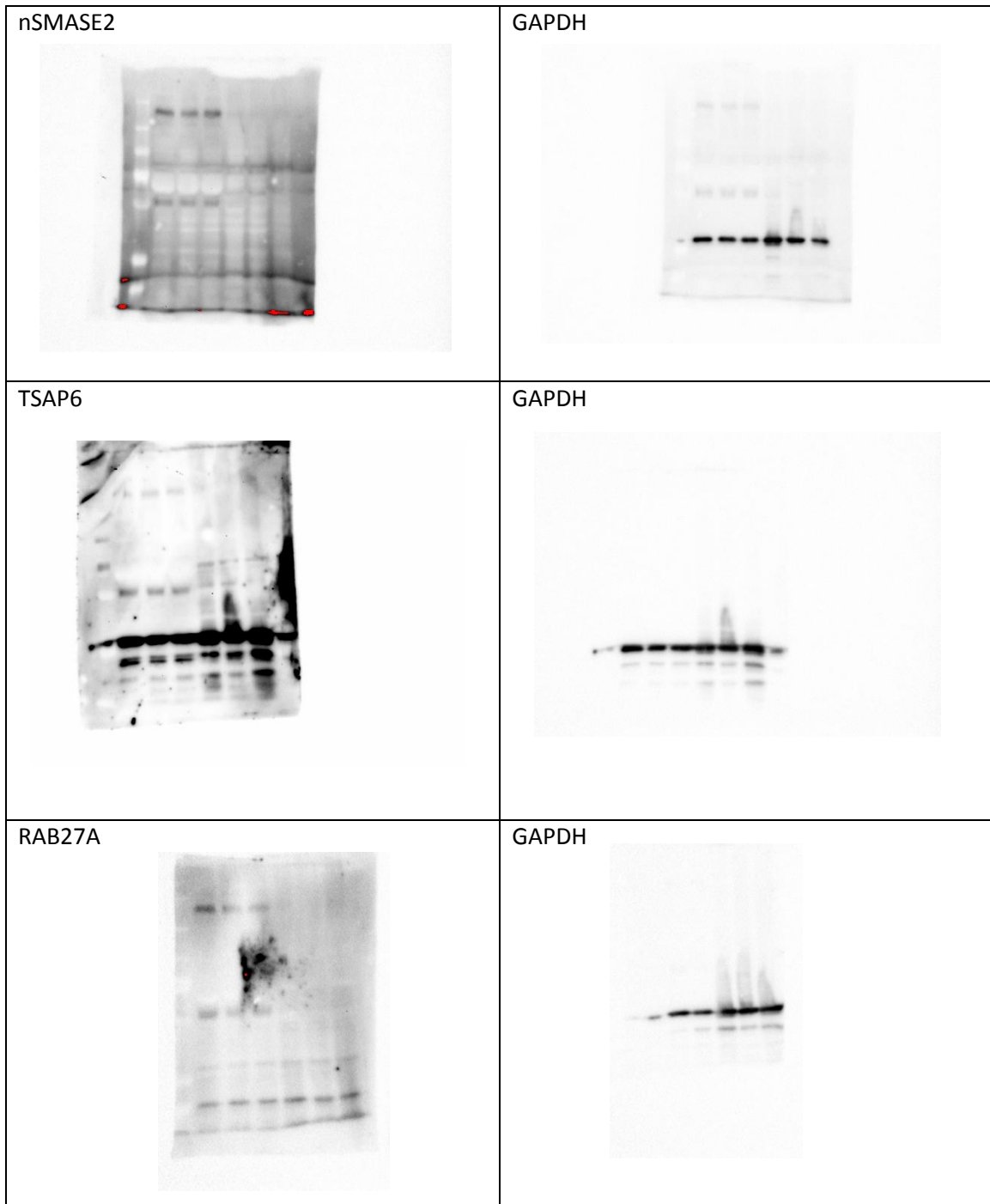


Fig.2:



case	group	pancreas	liver	intestine	fat	spleen	ovary	muscle
A1	Rab27a KO	2	0	0	3	0	0.5	
A2	Rab27a KO		0	0			0	0
A3	Rab27a KO	1	0	0	4	0	0	
A4	Rab27a KO	2	0	0	1	0		
B10	Rab27b KO		0	0	2	0		
B11	Rab27b KO	0	0	0		0	0.5	
B12	Rab27b KO	0	0	2	1			0
C5	control	2	0	5	3	0	0	0
C6	control	1	0	0			0.5	1
C7	control	7	0	3				
C8	control	4	0	3	3	0	0	
C9	control	5	0	2	5	0		

case	group	kidney	comments	p53	Ki-67	MMP2	MMP9
A1	Rab27a KO		fat with necrosis	4	4	1	0
A2	Rab27a KO	0		no tumor	no tumor	no tumor	no tumor
A3	Rab27a KO			4	4	3	0
A4	Rab27a KO	0		4	4	0	3
B10	Rab27b KO			2	4	0	0
B11	Rab27b KO	0		4	4	0	0
B12	Rab27b KO	0		4	4	3	0
C5	control	0		4	3	3	4
C6	control	0		4	4	4	3
C7	control			4	4	4	3
C8	control	0		3	4	4	4
C9	control			4	4	4	4