

Time dependent ROC

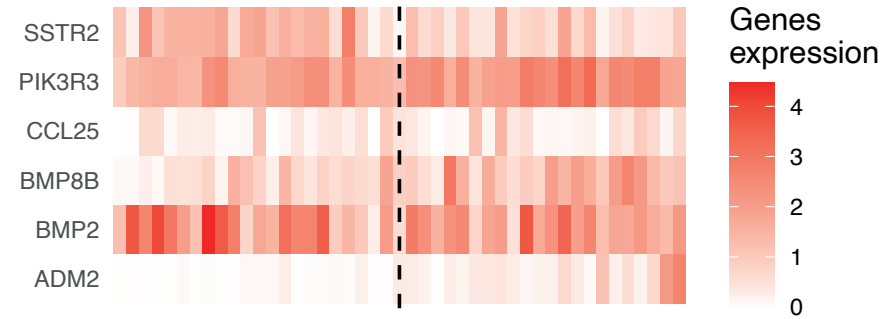
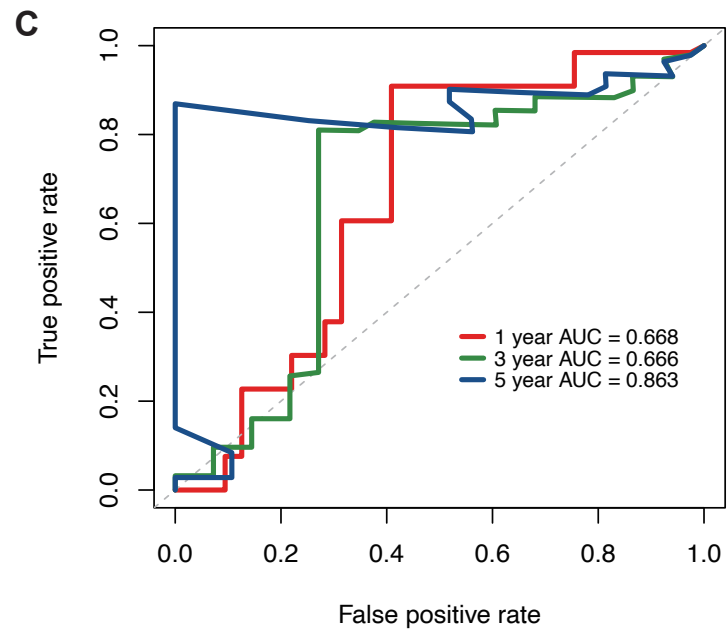


Figure S1. Validation of the six-genes signature in IDH-mutant GBM patients. **(A)** Kaplan–Meier survival analysis for IDH-mutant GBM patients based on the risk signature in CGGA_693 cohort. **(B)** Risk scores distribution, survival status of each patient, and expression profile of the six-genes signature in IDH-mutant GBM patients. **(C)** The time-dependent ROC curve of the six-genes signature in IDH-mutant GBM patients.