

**Table S1. ALU115 and ALU247/115 of serum DNA in subgroups of primary CRC patients.**

Clinical characteristics	No	cfDNA (ng/ml) (IQR 25–75)	<i>p</i>	ALU115 (ng/ml) (IQR 25–75)	<i>p</i>	ALU247/ALU115 (IQR 25–75)	<i>p</i>
ALL	76						
Sex			0.056		0.253		0.831
Male	49	784 (569-1250)		1015 (625-1865)		0.206 (0.142-0.284)	
Female	27	1170 (712-1660)		1455 (1010-1765)		0186 (0.150-0.348)	
Age (years)			0.390		0.024*		0.977
≤60	29	862 (620-1395)		975 (560-1583)		0.195 (0.152-0.301)	
>60	47	966 (600-1420)		1295 (955-2150)		0.200 (0.133-0.297)	
smoking			0.115		0.052		0.499
Yes	20	771 (483-1298)		947.5 (536.3-1499)		0.211 (0.155-0.329)	
No	56	976 (683-1508)		1378 (906.3-1974)		0.185 (0.147-0.289)	
Tumour size (cm)			0.246		0.240		0.107
≤5	49	848 (581-1430)		1145 (665-1663)		0.184 (0.131-0.280)	
>5	27	1040 (732-1410)		1480 (630-2370)		0.217 (0.160-0.360)	
TNM			0.323		0.468		0.337
I-II	47	848 (582-1330)		1180 (630-1750)		0.215 (0.150-0.297)	
III-IV	38	1026 (619.5-1773)		1430 (667.5-2355)		0.173 (0.134-0.308)	
Histologic differentiation			0.245		0.250		0.652
Low	10	914 (612-1463)		1300 (872.5-2011)		0.190 (0.126-0.266)	
Middle	57	1030 (613-1500)		1325 (665-2023)		0.206 (0.150-0.311)	
High	9	766 (464-898)		940 (592.5-1323)		0.200 (0.127-0.354)	

\*P<0.05 was considered significant; IQR, interquartile range; TNM, tumour node metastasis.

FIGURE S1

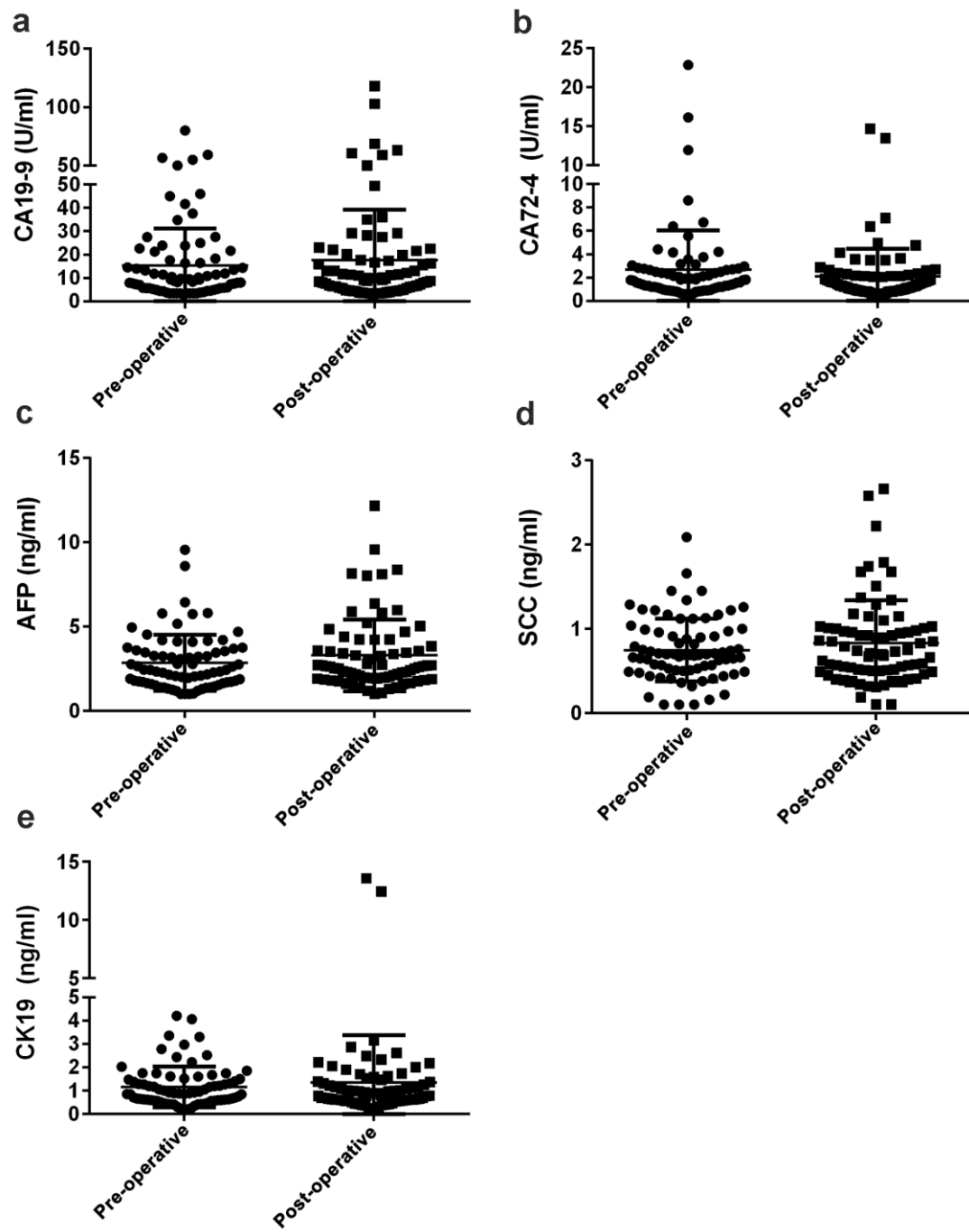


FIGURE S2

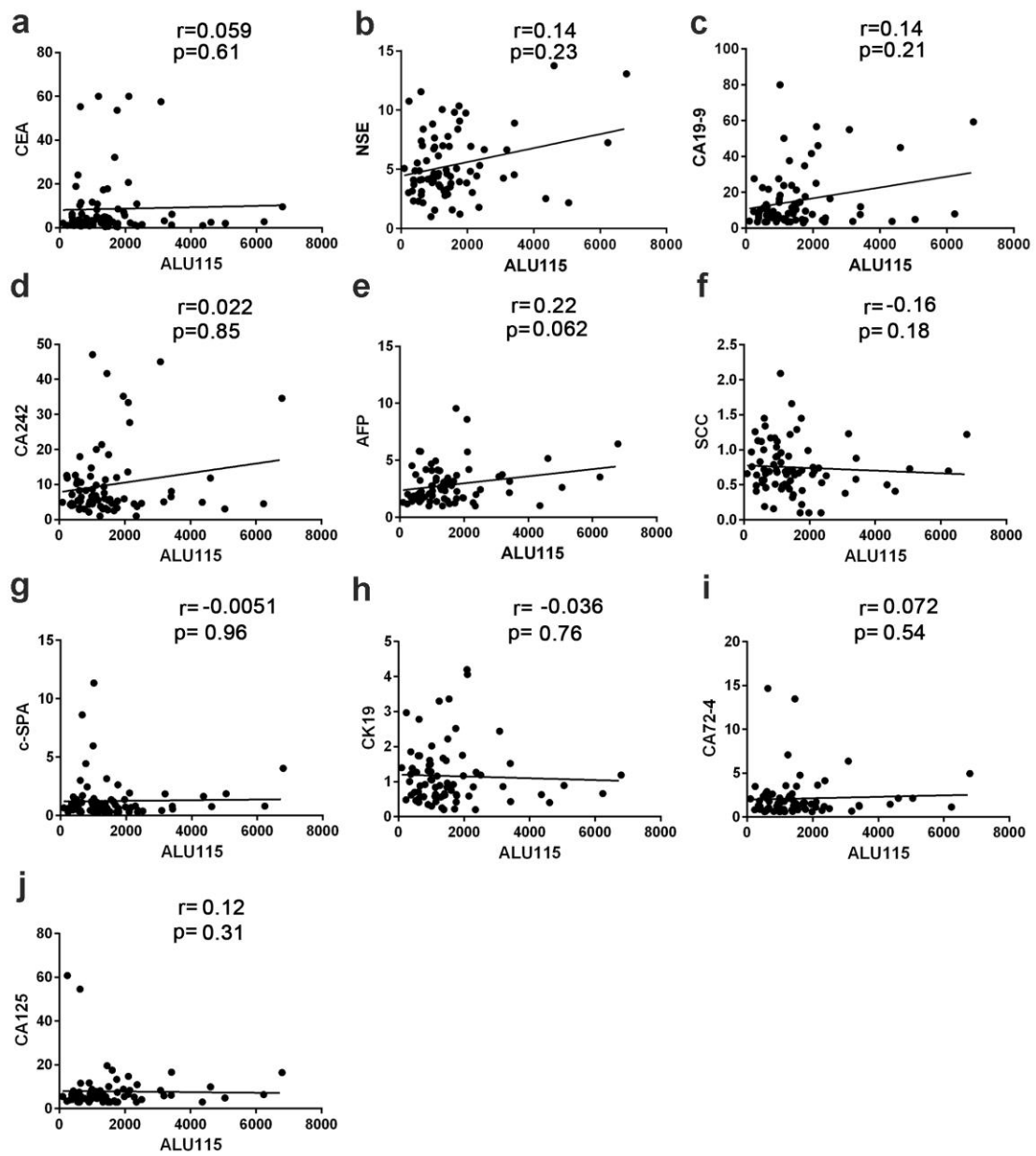


FIGURE S3

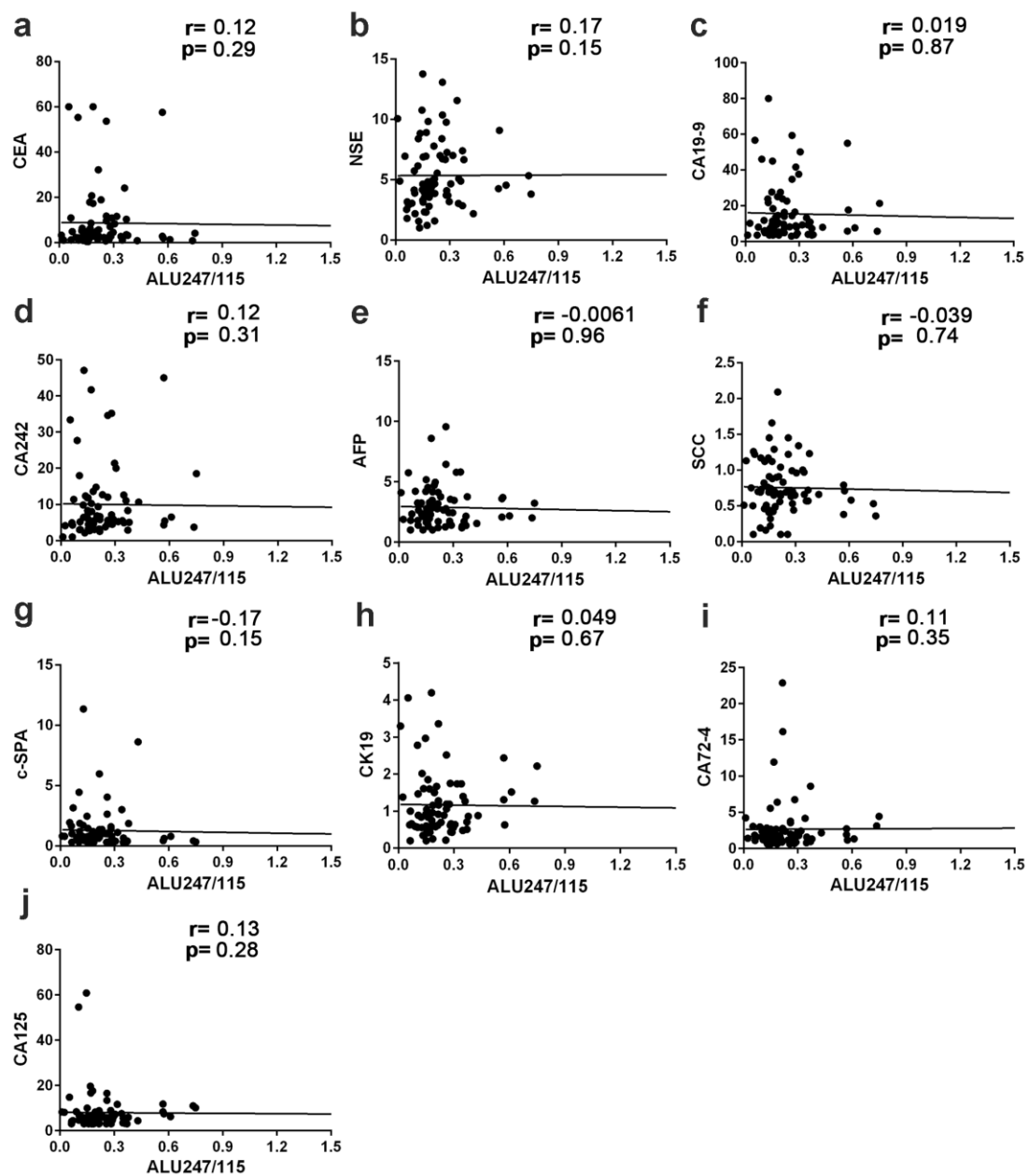


FIGURE S4

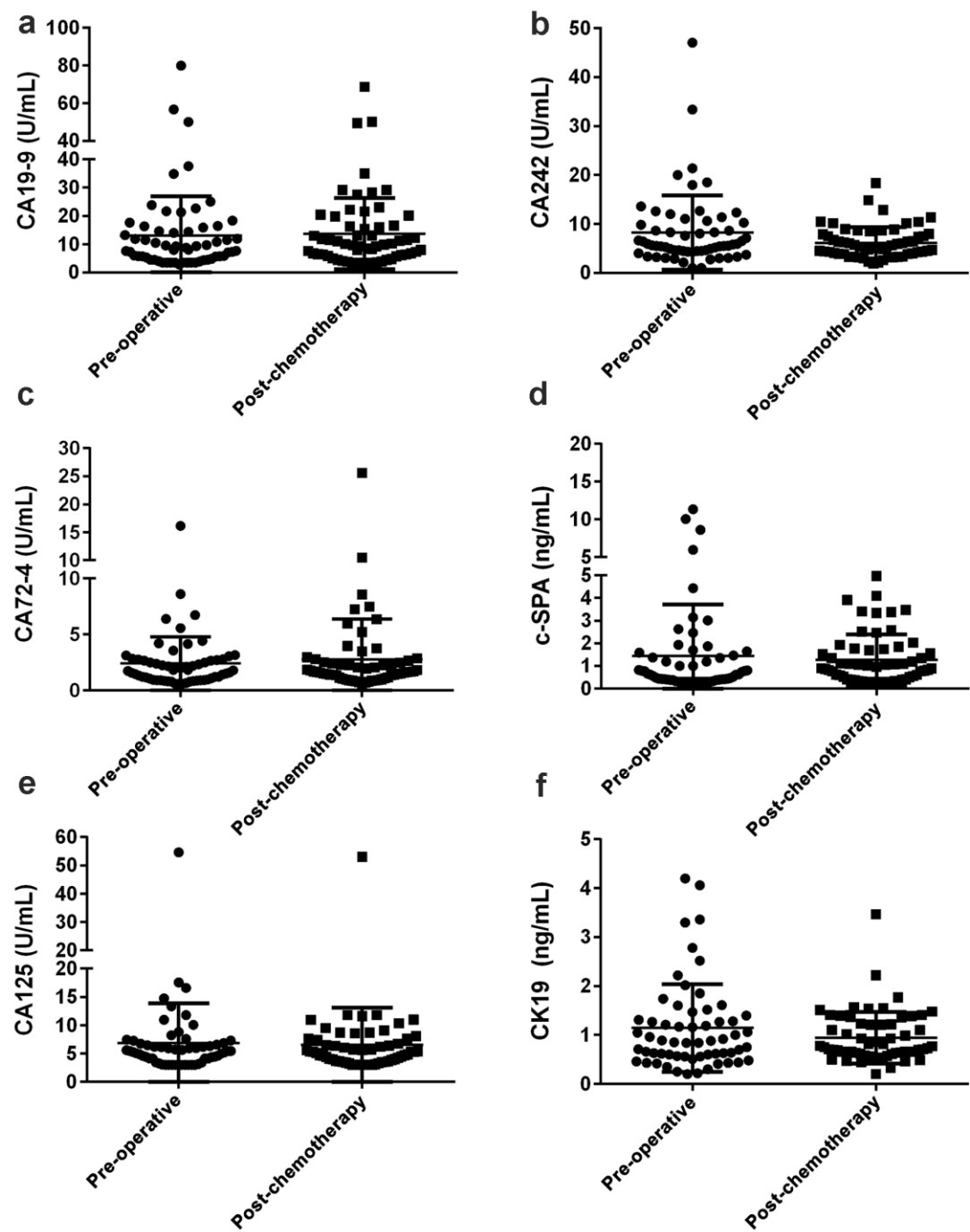


FIGURE S5

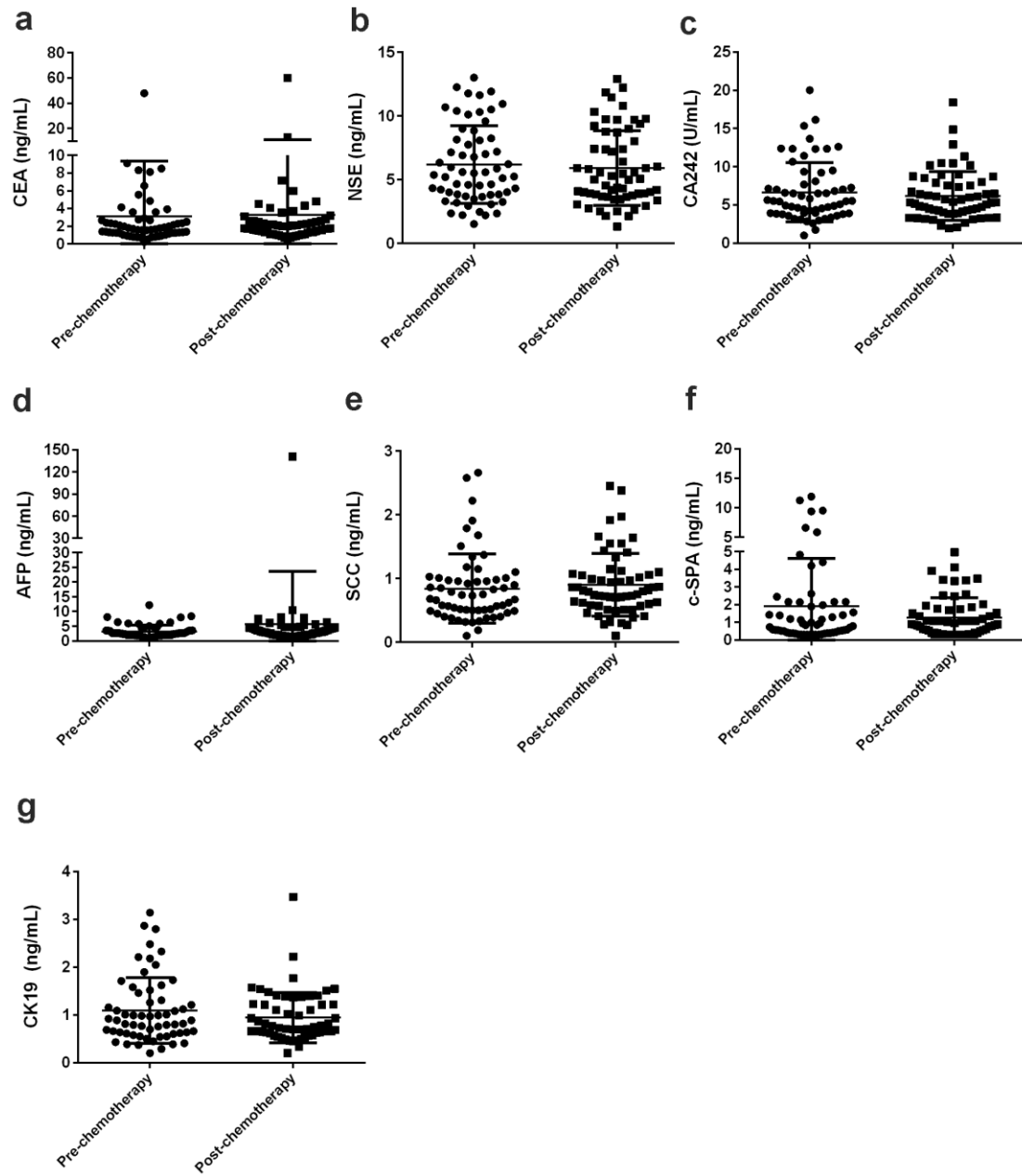


FIGURE S6

