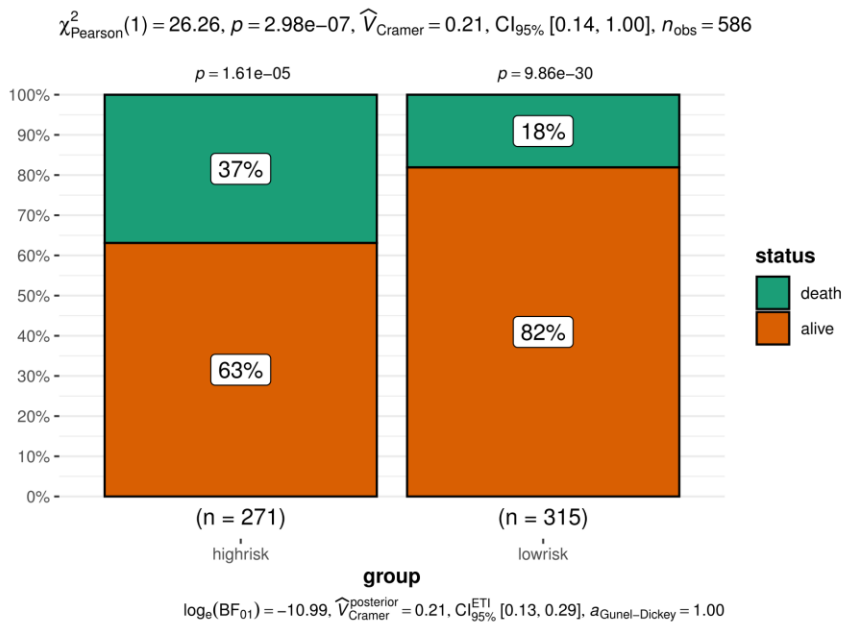


A

GSE83503 Validation Survival rate chi-squared test



B

GSE4581 Validation KM

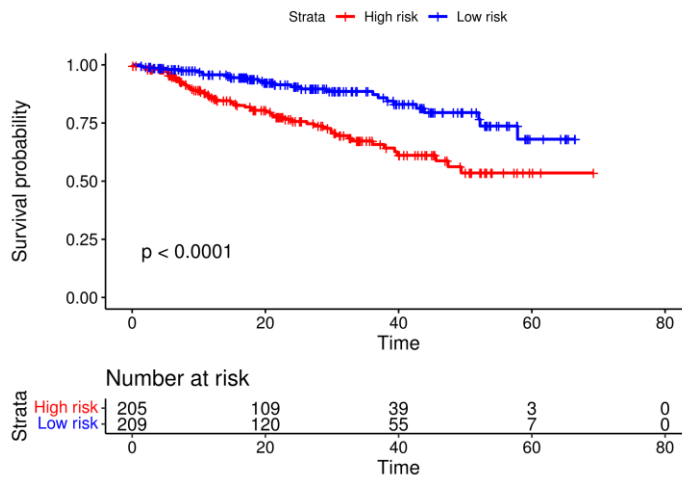


Figure S1. Survival analysis of records from GEO accession numbers GSE83503 and GSE4581 grouped by risk model. (A) A chi-square test was used to calculate the survival rate of the high- and low-risk groups in validation set (GSE83503), and the results showed that the mortality rate was significantly higher in the high-risk group than in the low-risk group ($P < 0.05$). (B) The validation set (GSE4581) Kaplan–Meier curve.