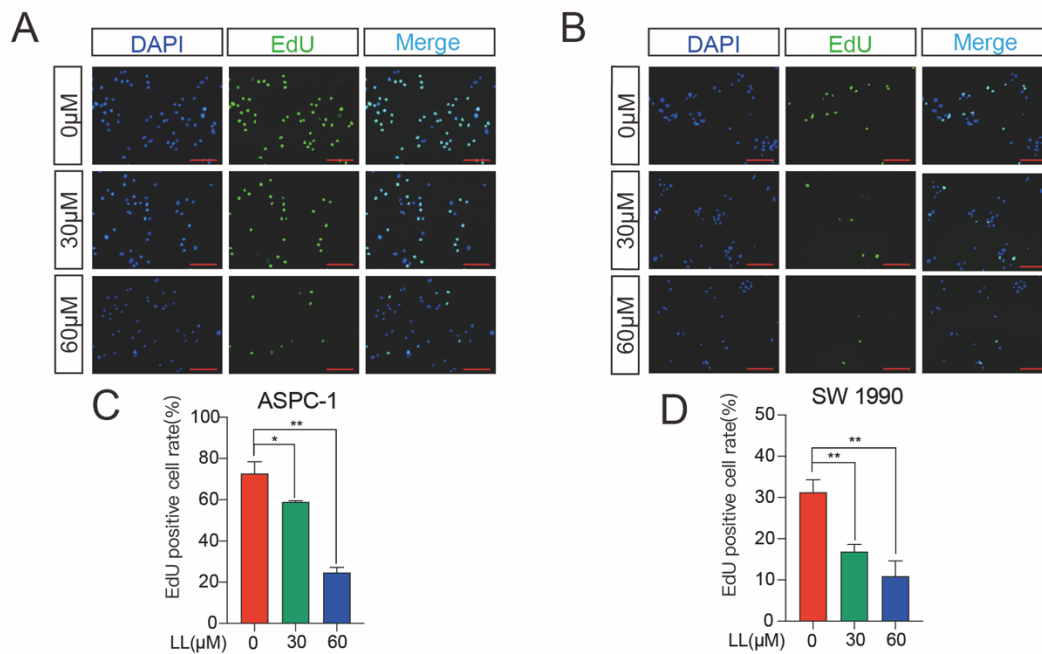


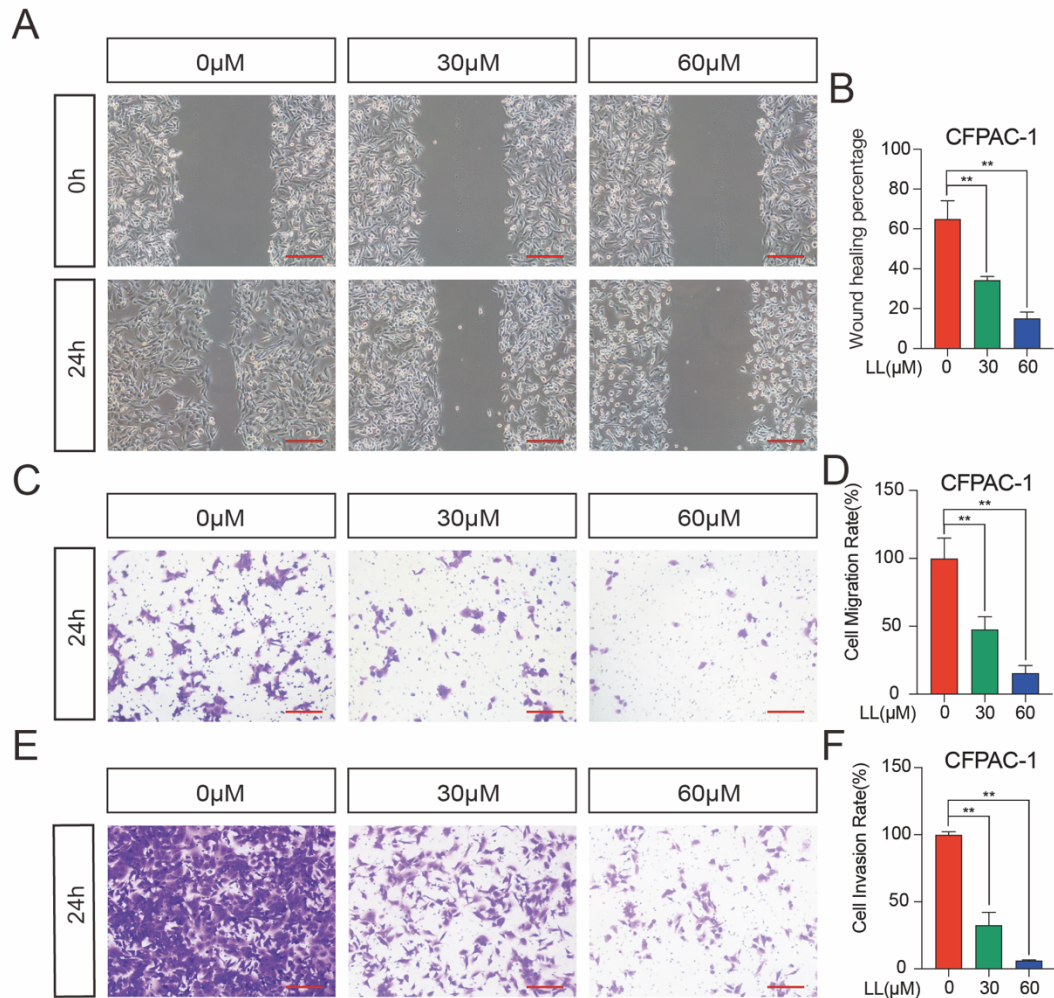
1



2

3 **Supplementary figure 1 Linderallactone inhibits the proliferation of pancreatic**  
4 **cancer cells.** A-B EdU staining eassay detected the proliferation of ASPC-1 and SW  
5 1990 cell lines under varying concentrations of LL treatment after 24 hours. C-D  
6 Quantification of EdU stain: The percentage of EdU positive cells to the total number  
7 of cells. Scale bar = 200 μm. \*p<0.05, \*\*p<0.01.

8



9

10 **Supplementary figure 2 Linderalactone inhibits the migration and invasion of**  
 11 **pancreatic cancer cells.** A Wound healing assay detects the migration ability of  
 12 CFPAC-1 under varying concentrations of LL after 24 hours. B Quantification of  
 13 Wound healing assay: The area of cell migration in 24 hours accounts for the percentage  
 14 of wound area in 0 hours. C The transwell assay detected the migration ability of cells  
 15 under varying concentrations of LL treatment after 24 hours. D Quantification of  
 16 transwell assay: percentage of compound treatment group in control group E Transwell  
 17 assay with Matrigel to detect cell invasion ability under varying concentrations of LL  
 18 treatment after 24 hours. F Quantification of transwell assay: percentage of compound  
 19 treatment group in control group. Scale bar = 200 μm. \*p<0.05, \*\*p<0.01.