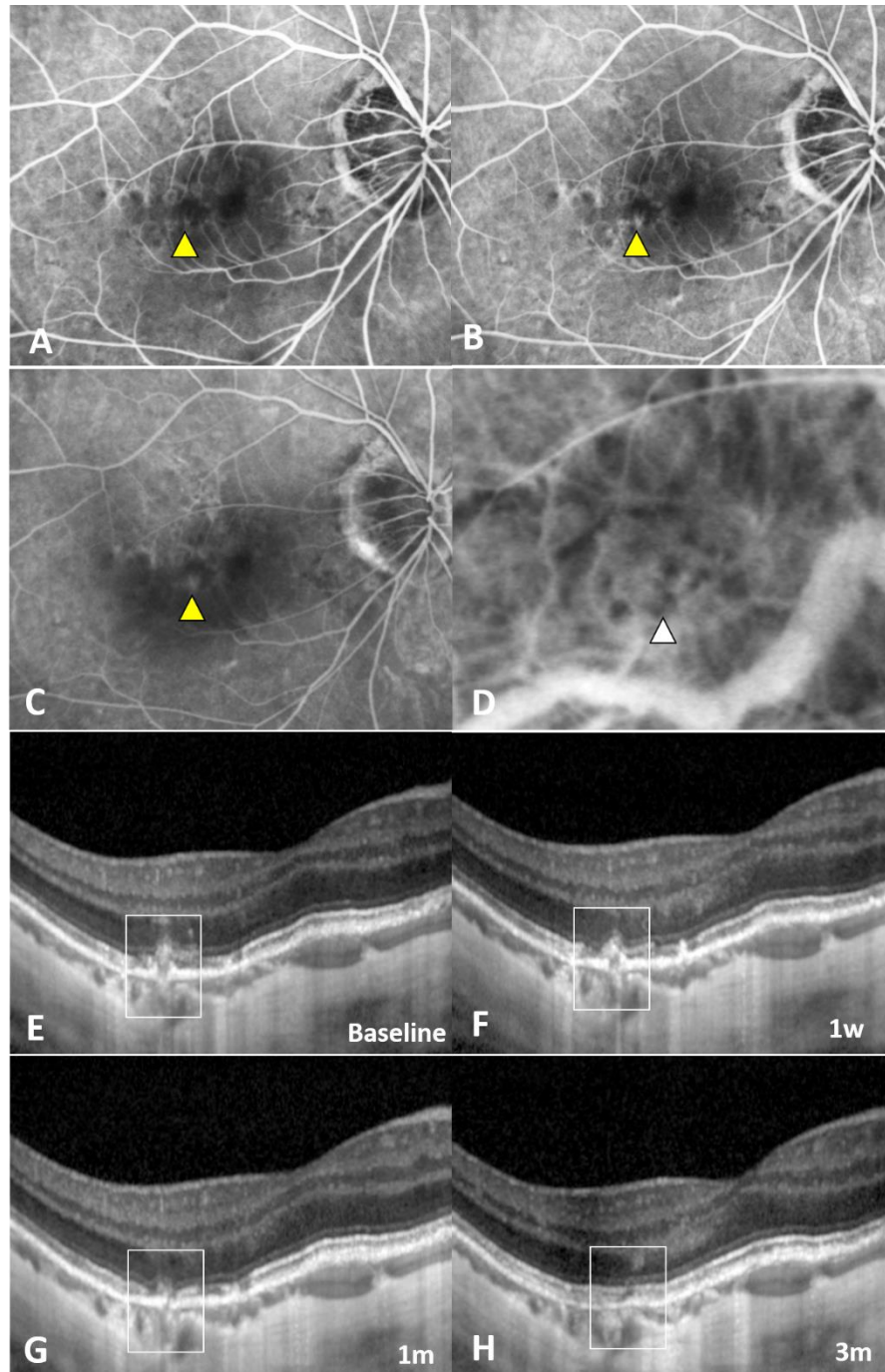


## Supplementary Materials



Multimodal imaging characteristics of a 50-year-old man with metamorphopsia in front of his right eye for 2 days (refractive error: -16.0D). **A-C.** Fluorescein angiography showing early hyperfluorescence with mild leakage (yellow arrowhead) during the late phase within the extrafoveal hemorrhage. **D.** Indocyanine green angiography showing linear hypofluorescence of a lacquer crack (white arrowhead). **E.** Spectral-domain optical coherence tomography showing a focal rupture of the RPE-BM-CC complex, without an exudative sign (white square). **F-H.** With absorption of the subretinal hemorrhage, the ruptured RPE-BM-CC complex gradually resolved during the 3-month follow up (white square).