

Research Article

Inhibiting the Progression of Human Retinoblastoma Cell by Downregulation of MMP-2/MMP-9 Using Short Hairpin RNAs (shRNAs) In Vitro

Nana Meng ^{1,2}, Zhi Zhao,^{1,2} Chunhe Shi ¹ and Leizhou Xia ³

¹Department of Ophthalmology, Affiliated People's Hospital, Jiangsu University, Zhenjiang 212002, China

²Zhenjiang Kangfu Eye Hospital, Zhenjiang 212002, China

³Department of General Surgery, Affiliated People's Hospital, Jiangsu University, Zhenjiang 212002, China

Correspondence should be addressed to Leizhou Xia; xialz1115@outlook.com

Received 11 March 2020; Revised 16 April 2020; Accepted 28 April 2020; Published 14 May 2020

Academic Editor: Alessandro Meduri

Copyright © 2020 Nana Meng et al. This is an open access article distributed under the Creative Commons Attribution License, which permits unrestricted use, distribution, and reproduction in any medium, provided the original work is properly cited.

Objective. To investigate the effect of downregulated matrix metalloproteinases (MMPs) gene on the proliferation, apoptosis, cell cycle, migration, and invasion of human retinoblastoma (RB) cell line in vitro. **Methods.** Small hairpin RNA (shRNA) targeting MMP-2/MMP-9 was designed and transfected into WER1-Rb-1 cells. 48 hours after transfection, qRT-PCR and western blot technique were used to investigate the inhibitory effect of MMP-2 and MMP-9 shRNAs. Cell viability was examined by 3-(4,5-dimethylthiazol-2-yl)-2,5-diphenyltetrazolium bromide (MTT) assay. Cell cycle arrest was detected using a flow cytometer while apoptosis was tested with Annexin V/PI kit. Transwell chamber assay was performed to detect the migration and invasion ability of the WER1-Rb-1 cells. **Results.** After transfection of MMP-2/MMP-9 shRNA, there was a significant decrease in the expressions of both mRNA and protein in the shRNA groups compared with the negative and vector controls. The results of MTT assay suggested that the cell viability was significantly decreased in shRNA groups ($p < 0.05$). Cell apoptosis also increased significantly in shRNA groups compared with the negative and vector controls ($p < 0.05$). The flow cytometer analysis proved that the proportion of the G1 phase increased and the proportion of the G0 phase reduced significantly by the transfection of MMP-2/MMP-9 shRNA ($p < 0.05$). The migration and invasion ability were also significantly decreased in the groups of MMP-2/MMP-9 shRNA ($p < 0.05$). **Conclusions.** Cell viability, migration, and invasion ability of RB cells are inhibited, and apoptosis is induced after downregulation of MMP-2/MMP-9 through RNA interference. MMP-2 and MMP-9 may be potential targets in the gene therapy of RB.

1. Introduction

Developing from the immature cells of retina, retinoblastoma (RB), as the most common primary intraocular malignancy of childhood, is a rare form of ocular malignant tumor [1–3] with an incidence of approximately 1/15,000–20,000 live births worldwide [4]. If diagnosed early, RB can be effectively treated by a reasonable therapy such as intravenous chemotherapy together with focal therapy (laser cryotherapy). However, most advanced cases will be involved in a distant invasion or metastasis due to the limited available diagnostic approaches, which may result in an elevated mortality rate [5]. Since the treatment of RB is

mainly aimed at survival and the globe salvage and visional preservation are secondary goals, there is a critical need for the development of new targeted therapies to decrease the invasion and metastasis of RB.

Matrix metalloproteinases (MMPs) can degrade the base membrane, which is a crucial step in the tumor invasion and subsequent distant metastasis [6]. MMPs belong to a family of zinc ion-dependent endopeptidases among which MMP-2 and MMP-9 are considered to be indispensable for the degradation of the main components of extracellular matrix (ECM) [7]. Recently, the high expression of MMP-2 and MMP-9 has been confirmed in various malignant tumors, including pancreatic cancer [8], oral squamous cell

carcinoma [9], cervical carcinoma [10], and RB as well [11–13]. The tissue inhibitors of metalloproteinases (TIMPs) are responsible for regulating the enzymatic activities of MMPs [14]. Accordingly, downregulation of the expression of the MMP-2/MMP-9 gene may be beneficial to inhibit the development and invasion of RB. However, studies on how to inhibit RB cells by silencing the MMP-2/MMP-9 gene are limited. In the present study, the expression of the MMP-2/MMP-9 gene was downregulated by small hairpin RNA (shRNA) to study its effect on RB cell proliferation, apoptosis, cell cycle, migration, and invasion, and furthermore to explore the potential clinical significance of blocking MMP-2 and MMP-9 gene expression as an antitumor therapeutic target.

2. Materials and Methods

2.1. Retinoblastoma Cells. A human RB cell line, WER1-Rb-1, was purchased from the cell bank of Shanghai Institutes for Biological Sciences (Shanghai, China). All cells were cultured in RPMI-1640 medium (Gibco, Grand Island, NY, USA) with 10% fetal bovine serum (FBS, Sigma, St. Louis, Missouri, USA), 100 U/ml penicillin, and 100 mg/ml streptomycin, and maintained at 37°C/5% CO₂. The medium was changed every 3 days, and cells were subcultured every 2–3 days and observed daily.

2.2. Silence of MMP-2/MMP-9 Expression in WER1-Rb-1 Cells. To suppress the MMP-2/MMP-9 expression in RB cells, a powerful gene-specific silencing technique utilizing the RNA interference (RNAi) mechanism was used. The sequence-verified plasmid vector (plenty GFP Puro) based on the short hairpin RNA library targeting human MMP-2/MMP-9 (MMP-2/MMP-9-shRNA) was purchased from GenePharma Co. (Shanghai, China). Short hairpin RNAs (shRNAs) were processed into siRNAs intracellularly, leading to a specific loss of function of MMP-2/MMP-9 gene effectively. In the experiments of transfection, WER1-Rb-1 cells were seeded into a 24-well plate and cultured in RPMI-1640 without antibiotics. And then, the transfection was performed using Lipofectamine 2000 (Invitrogen, Carlsbad, CA, USA) according to the manufacturer's instructions.

2.3. RNA Extraction and Quantitative Real-Time PCR (qRT-PCR). Total RNA was isolated from WER1-Rb-1 cell with the TRIzol reagent (Ambion) according to the manufacturer's protocol. Using the M-MLV1 reverse transcription kit (Takara, Dalian, China), total RNA was reversely transcribed to cDNA, and then quantified with Universal SYBR Green I detection assays (Biotek Corporation) using an Applied Biosystems 7900 HT system (Funglynn Biotech Incorporated). The primers used in this study were as follows: MMP-2, 5-TGATGGCATCGCT-CAGATCC-3' and 5-GGCCTCGTATACCGCATCAA-3'; MMP-9, 5-GGACAAGCTCTTCGGCTTCT-3' and 5-TCGCTGGTACAGGTCGAGTA-3'; and GAPDH, 5-CTCCTCCTGGCCTCGCTGT-3' and 5-GCTGTCACCTT-CACCGTTCC-3'.

2.4. Western Blotting. WER1-Rb-1 cells were harvested and lysed with RIPA buffer (Beyotime, Jiangsu, China). Protein concentrations were determined by a BCA protein assay kit (Beyotime) according to the manufacturer's instructions. Proteins were separated using 12% SDS-polyacrylamide gels and transferred from the gel to nitrocellulose membranes. Membranes were blocked with 5% nonfat milk and then exposed to the following primary antibodies: MMP-2 (1:1000, sc-13594, Santa Cruz), MMP-9 (1:1000, sc-6841, Santa Cruz), and anti-GAPDH (1:1000, sc-365062, Santa Cruz). The blots were rinsed with 0.1% TBST and incubated with horseradish peroxidase-(HRP-) conjugated corresponding secondary antibody (1:5000) for 1 h at room temperature. GAPDH was used as a control, and all the antibodies were purchased from Santa Cruz Biotechnology.

2.5. Cell Viability. 3-(4,5-Dimethylthiazol-2-yl)-2,5-diphenyltetrazolium bromide (MTT) assay was applied to determine cell viability. In brief, 3 × 10³ transfected WER1-Rb-1 cells were plated into 96-well plates and cultured for 24–72 h. At the indicated time, 20 μl MTT solution (3 mg/ml, Beyotime) was added to each well, followed by an additional culture for 4 h. Then, the medium was removed, and 150 μl dimethyl sulfoxide (DMSO, Sigma-Aldrich) was added to each well for dissolving MTT formazan crystals. Optical density (OD) was detected at the wavelength of 490 nm using a microplate spectrometer (Thermo Scientific, Waltham, USA).

2.6. Cell Cycle Distribution and Analysis of Apoptosis. WER1-Rb-1 cells were harvested and washed with PBS 48 h after transfection. Then, 5 × 10⁴ cells were resuspended in 200 μl of binding buffer containing 5 μl of Annexin V-fluorescein isothiocyanate (FITC) and 5 μl of propidium iodide (PI). The cell cycle test was performed using an FACS-Calibur™ flow cytometer (BD Biosciences, San Jose, CA, USA) and was analyzed by CellQuest software (BD Biosciences). Cell apoptosis was determined with an Annexin V-FITC Apoptosis Detection kit (Beyotime). The data were analyzed with FlowJo v5.7.2 software (BD Biosciences).

2.7. Migration and Invasion Assay. Transwell chamber was applied to perform the migration and invasion assay. Matrigel was used to precoat the membrane of transwell to simulate a matrix barrier for the invasion assay. The transfected cells growing in the log phase were seeded on the upper chambers at a density of 1 × 10⁵ cells/well. To stimulate cell invasion, 600 μl medium with 20% FBS was added to the lower chamber. After 24 h of incubation, cells which migrated to the lower chamber were fixed with paraformaldehyde for 30 min and stained with 0.1% crystal violet for 15–30 min. The images of cells were photographed with an inverted microscope (Olympus) at ×100 magnification, and the cell numbers were counted in five random fields per membrane.

2.8. Statistical Analysis. GraphPad Prism 6 (GraphPad Software, Inc, San Diego, CA, USA) software was applied for statistical analysis. Comparisons between the groups were analyzed with two-tailed Student's *t*-test or one-way ANOVA. A *p* value <0.05 was considered statistically significant in all analyses. All data are represented as the mean ± SEM (standard error of the mean) from at least three independent experiments, as indicated with the significance score (* < 0.05; ** < 0.01; *** < 0.001; **** < 0.0001) in the figure legends.

3. Results

3.1. MMP-2/MMP-9 Downregulated by RNA Interference in WER1-Rb-1 Cells. The shRNA sequences for MMP-2/MMP-9 were fused with a green fluorescent protein (GFP) cDNA by using the plasmids in this study. Therefore, the transfected WER1-Rb-1 cells exhibited strong green fluorescence under a fluorescence microscope, while there was no fluorescence for the control group (Figure 1(a)). Additionally, the time point of the most significant transfection efficacy was 48 hours after transfection in this study. To get the optimal RNA interference effect, three different sense sequences targeting MMP-2/MMP-9 were constructed, respectively (MMP-2: CCCTTCTTGTTCAATGGCA, AACTAAA-GAAGATGCAGA, AGGTGATCTTGACC-AGAAT; MMP-9: CCGAGCTGACTCGACGGTG, TGGTGCCTAC-CACCTCGA, ACGC-ACGACGTCTTCCAGT). To investigate MMP-2/MMP-9 expression in WER1-Rb-1 cells after transfection with different shRNAs, qRT-PCR was performed. As shown in Figures 1(b) and 1(c), shRNA-1 for MMP-2 (shMMP2-1) and shRNA-2 for MMP-9 (shMMP9-2) were the most effective, respectively. Moreover, we got consistent results for the expression of MMP-2/MMP-9 protein after transfection from WB (Figure 1(d)) results. Simultaneously, the mRNA and the protein level of MMP-2/MMP-9 were almost identical between the control group and vector group (Figures 1(b)–1(d)). Accordingly, shMMP2-1 and shMMP9-2 were chosen for the further experiments.

3.2. Downregulation of MMP-2/MMP-9 Inhibits WER1-Rb-1 Cell Viability. The MTT assay showed that there was no difference for cell viability at any indicated time point between the control group and vector group, suggesting that the blank vector had no effect on cell proliferation. However, downregulation of MMP-2/MMP-9 through shRNA transfection remarkably decreased the WER1-Rb-1 cell viability (24 h, vector versus shMMP-2/shMMP-9, *p* = 0.0022/0.002; 48 h, vector versus shMMP-2/shMMP-9, *p* < 0.0001 for both; 72 h, vector versus shMMP-2/shMMP-9, *p* = 0.0003/0.0001; Figure 2(a)). Furthermore, the inhibition rate of MMP-2/MMP-9 appeared to increase in a time-dependent manner following transfection (Figure 2(b)).

3.3. Inhibition of MMP-2/MMP-9 Affected the Cell Cycle Arrest and Increased Apoptosis of WER1-Rb-1 Cell. FACS was conducted to determine the effect of downregulated

MMP-2/MMP-9 on the cell cycle of WER1-Rb-1 cells. As illustrated in Figures 3(a) and 3(b), the vector transfection did not influence the cell cycle, while transfection of shMMP-2/shMMP-9 after 48 hours significantly decreased the proportion of G1 phase cells compared with the vector group (vector versus shMMP-2, *p* = 0.0074; vector versus shMMP-9, *p* = 0.0105). Simultaneously, the proportion of G2 phase cells was remarkably increased 48 hours after transfection (vector versus shMMP-2, *p* < 0.0001; vector versus shMMP-9, *p* = 0.0006; Figures 3(a) and 3(c)). In addition, an FACS analysis showed that cell apoptosis rate was unaffected in the vector group in comparison to the control group, while knockdown of MMP-2/MMP-9 significantly increased the cell apoptosis rate (vector versus shMMP-2, *p* = 0.0034; vector versus shMMP-9, *p* = 0.0023; Figures 4(a) and 4(b)).

3.4. MMP-2/MMP-9 Knockdown Inhibited the Migration and Invasion of WER1-Rb-1 Cell. To detect the effect of MMP-2/MMP-9 on WER1-Rb-1 cell migration and invasion, transwell assay was performed. Figures 5(a) and 5(b) demonstrated that WER1-Rb-1 cell transfected by MMP-2/MMP-9 shRNA significantly suppressed the cell capacity of migration (vector versus shMMP-2, *p* = 0.0003; vector versus shMMP-9, *p* = 0.0005). Similarly, we got parallel results for the decreased cell invasion ability after MMP-2/MMP-9 shRNA transfection (vector versus shMMP-2, *p* = 0.0021; vector versus shMMP-9, *p* = 0.0055; Figures 5(c) and 5(d)). As expected, there was no difference for the cell migration or invasion between the negative control group and vector group.

4. Discussion

Enucleation is the critical therapy for intraocular RB [1], which has been proved to be a therapeutic standard for the unilateral RB cases. Currently, more and more novel managements for advanced RB are being tested to minimize the need of enucleation because child survival is still the therapeutic goal with highest priority and prompt removal of affected eyeballs shows the decreasing risk of potential tumor spread [1, 2, 15]. The pathogenesis of tumor spread and metastasis involves a series of complicated steps, among which the degradation of the ECM is supposed to be the crucial one [16, 17]. MMPs are the main proteinases, which are responsible for degrading the majority of protein in base membrane and ECM. Among the components of ECM, gelatinase A and gelatinase B which mostly degrade gelatin and several types of basal membrane collagen have a close positive correlation with MMP-2 and MMP-9, respectively [18]. Except for the degeneration of ECM, MMP-2 and MMP-9 also influence the adherence and motility of tumor cells [19]. Long H's study showed that the expression of MMP-2 and MMP-9 were closely associated with optic nerve invasion and clinical stage of RB, which implied that inhibition of MMP-2 and MMP-9 will be beneficial to the invasion and metastasis of RB [12].

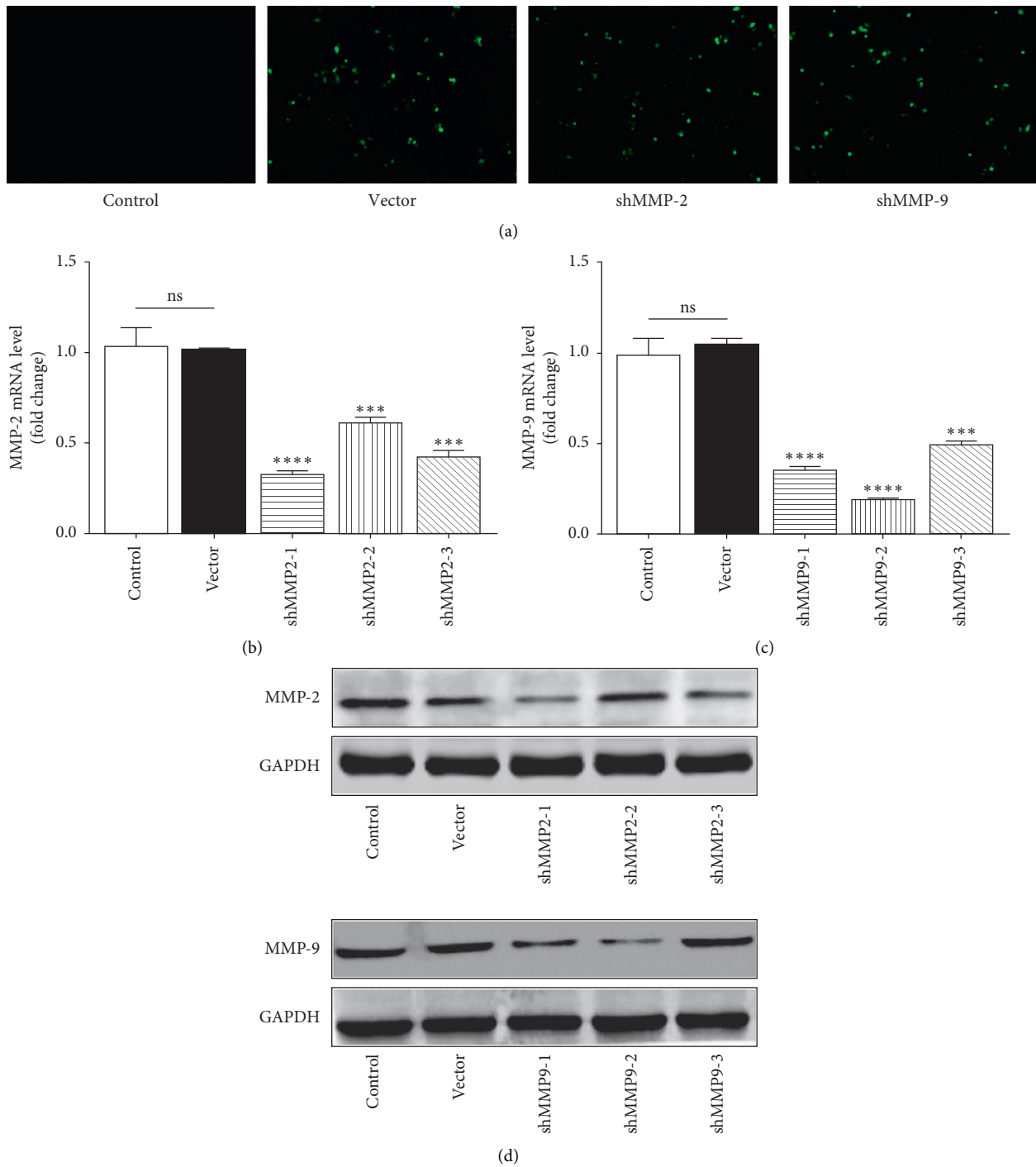


FIGURE 1: Confirmation of MMP-2/MMP-9 knockdown by RNAi in WER1-Rb-1 cells. (a) Representative images of WER1-Rb-1 cells after transfection under fluorescence microscopy. (b) Decreased MMP-2 mRNA level after MMP-2 shRNA transfection. (c) Decreased MMP-9 mRNA level after MMP-9 shRNA transfection. (d) Representative WB images of MMP-2/MMP-9 for each group with GAPDH serving as a loading control. *** $p < 0.001$, **** $p < 0.0001$.

Previous research has proved that MMP-2 and MMP-9 are present in RB cells, and the expression level is significantly higher in RB tissue compared to normal retina [7, 11–13]. In this study, we addressed the effect of downregulated MMP-2/MMP-9 gene on the proliferation, apoptosis, cell cycle, migration, and invasion of WER1-Rb-1

cell line. Besides, we can draw that the decreased cell proliferation of RB attributes to the elevated apoptosis rate from the results of cell cycle and apoptosis analysis. To the best of our knowledge, we are the first to knockdown MMP-2/MMP-9 in RB cell in vitro stably by shRNA gene silencing technique, which was different from the study of Webb et al.

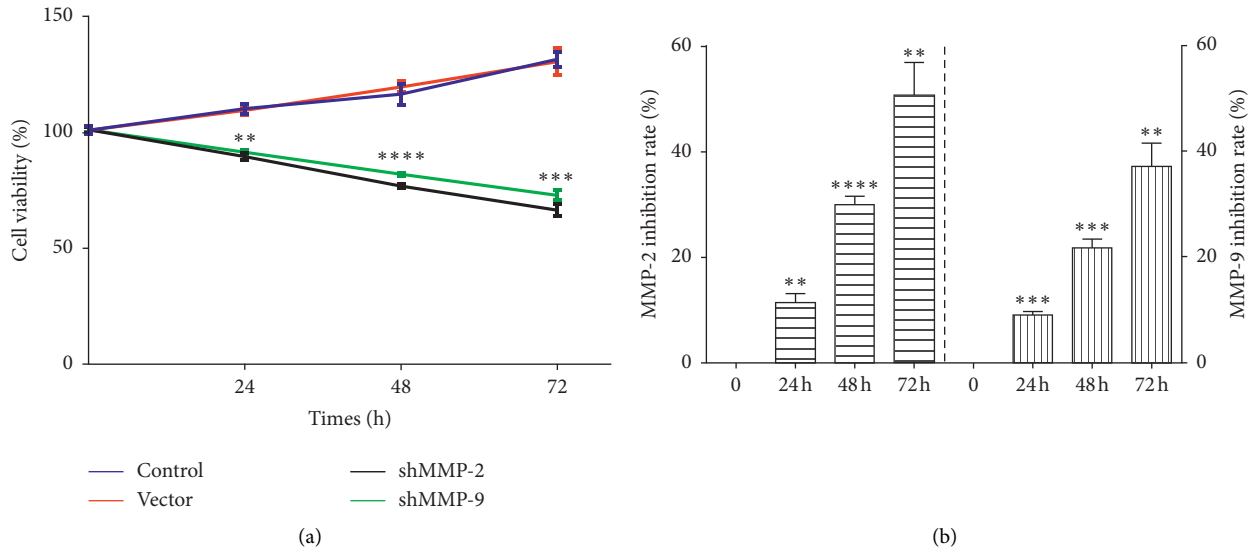


FIGURE 2: MMP-2/MMP-9 knockdown inhibits the proliferation of WER1-Rb-1 cells. (a) MTT assay results of each group at different time points after transfection. (b) Inhibition rate of shMMP-2/shMMP-9 significantly increased with time going. $**p < 0.01$, $***p < 0.001$, $****p < 0.0001$.

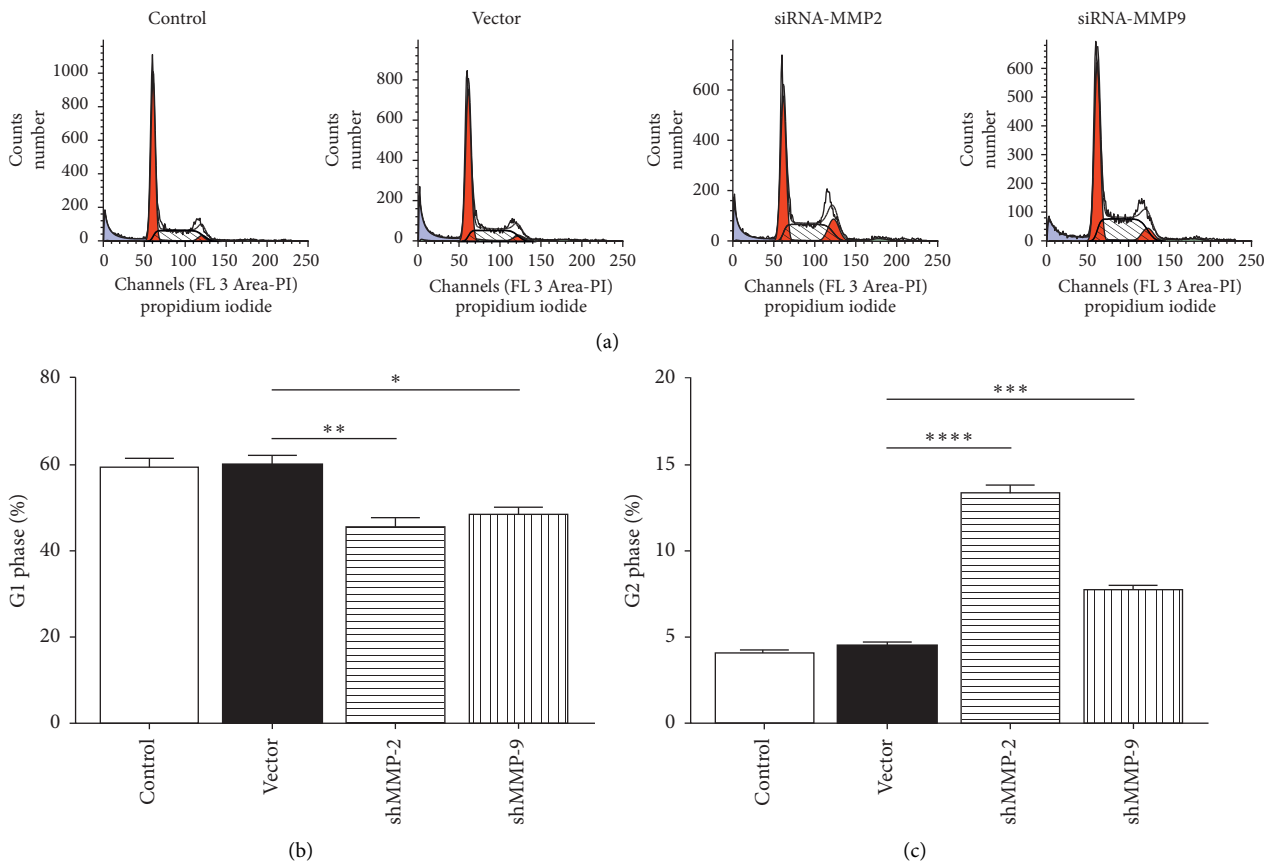


FIGURE 3: Silence of MMP-2/MMP-9-altered cell cycle distribution of WER1-Rb-1 cells. (a) Representative FACS images of cell cycle for each group. (b, c) Normalized proportion of G1/G2 phase cells, plotted as mean \pm SEM of triplicates per group. $*p < 0.05$, $**p < 0.01$, $***p < 0.001$, $****p < 0.0001$.

in 2017 [13]. For the past decades, RNA interference (RNAi) has been becoming a cogent tool for the silence of gene function in mammalian cells. Among the RNAi

technologies, shRNAs can be applied to generate the knockdown cell lines stably, which eliminates the need for repetitive transfection and significantly improves

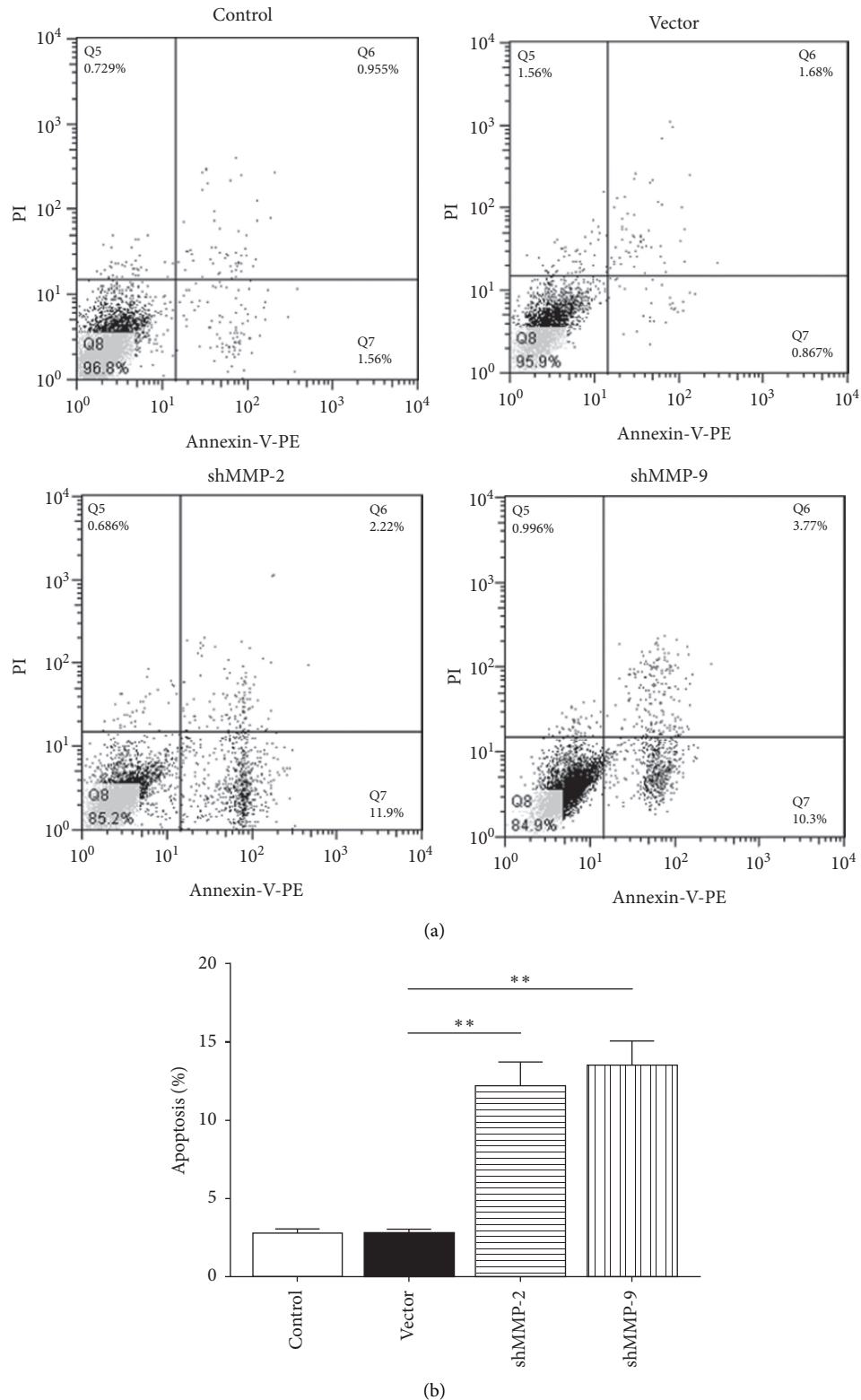
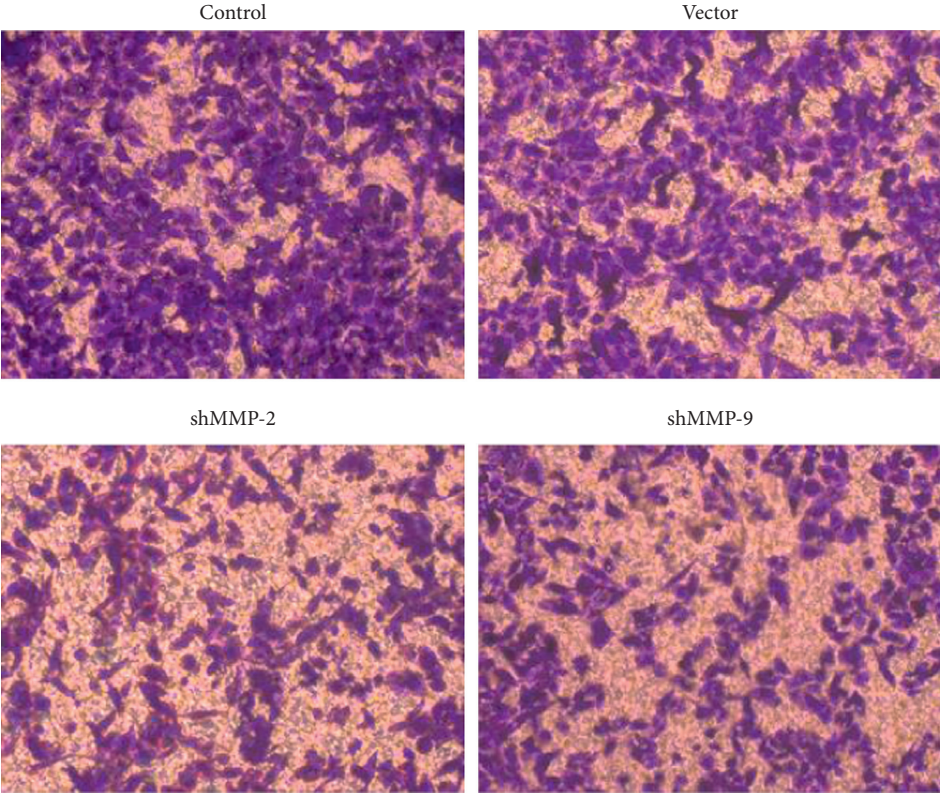


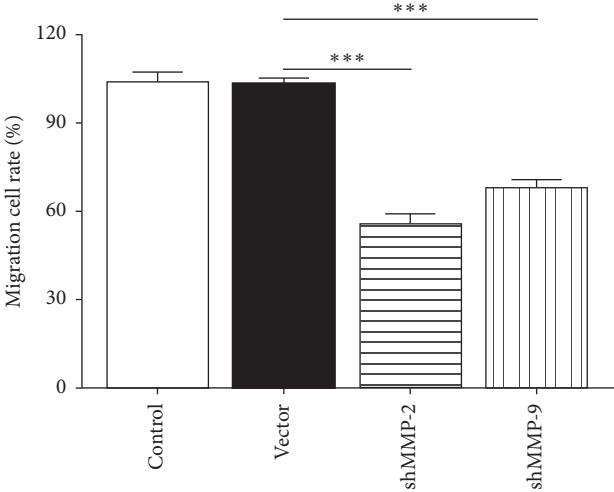
FIGURE 4: MMP-2/MMP-9 inhibition induces the apoptosis of WER1-Rb-1 cells. (a) Representative FACS images based on Annexin-V-PE and PI staining for each group. (b) Apoptosis was determined in WER1-Rb-1 cells transfected with MMP-2 and MMP-9 shRNA. ** $p < 0.01$.

reproducibility of the results compared with the small interfering RNAs (siRNAs) [20]. Consistent with some previous reports [12, 13], our results also indicated that cell

viability, migration, and invasion ability of RB cell were inhibited, and apoptosis of RB cell was induced due to downregulation of MMP-2/MMP-9, suggesting that MMP-2



(a)



(b)

FIGURE 5: Continued.

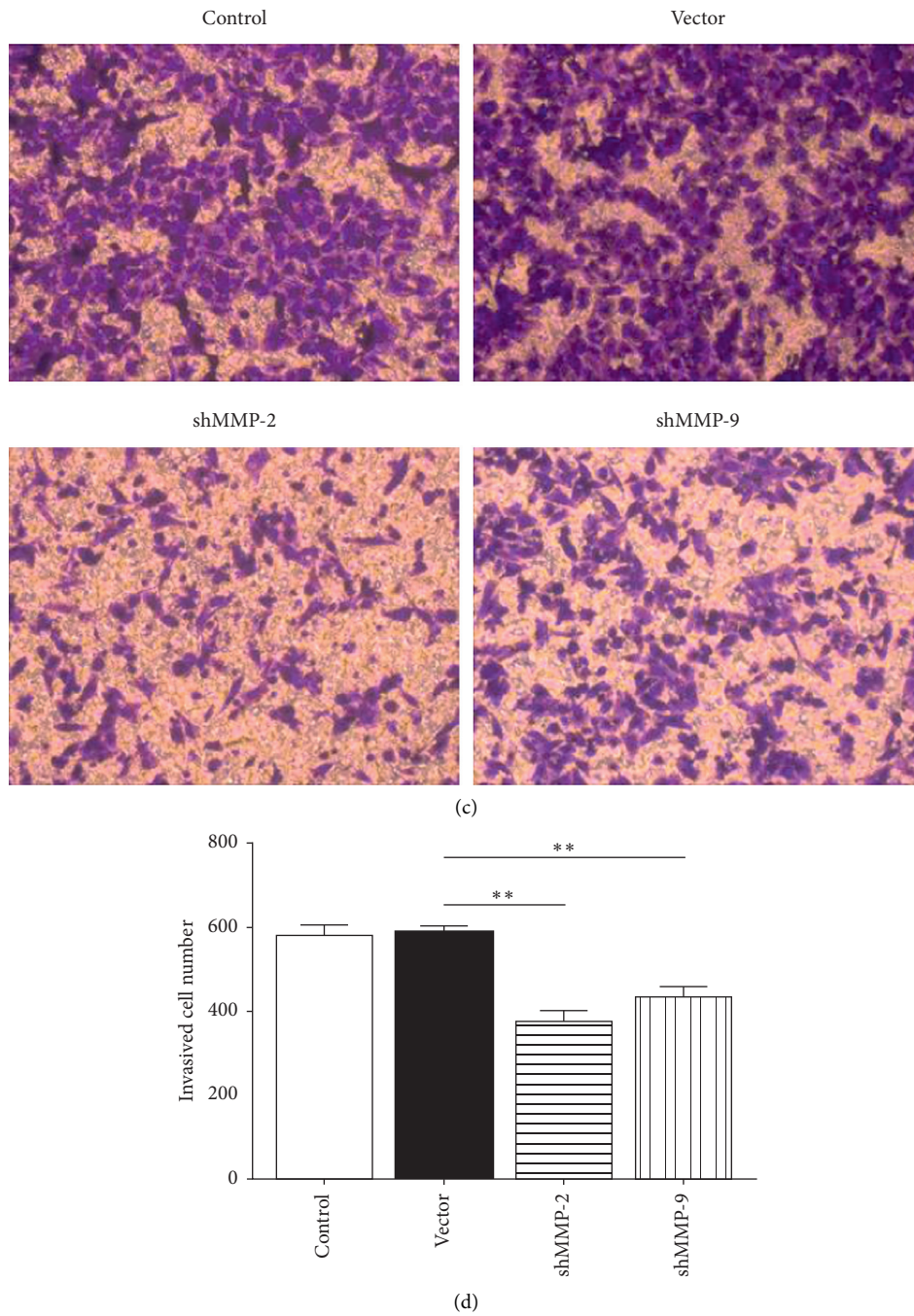


FIGURE 5: shMMP-2 and shMMP-9 inhibits migration and invasion of WER1-Rb-1 cells. (a, b) MMP-2/MMP-9 knockdown inhibited migration of WER1-Rb-1 cells, as determined by transwell migration assay. (c, d) Transwell migration assay showed that MMP-2/MMP-9 knockdown inhibited invasion of WER1-Rb-1 cells. ** $p < 0.01$, *** $p < 0.001$.

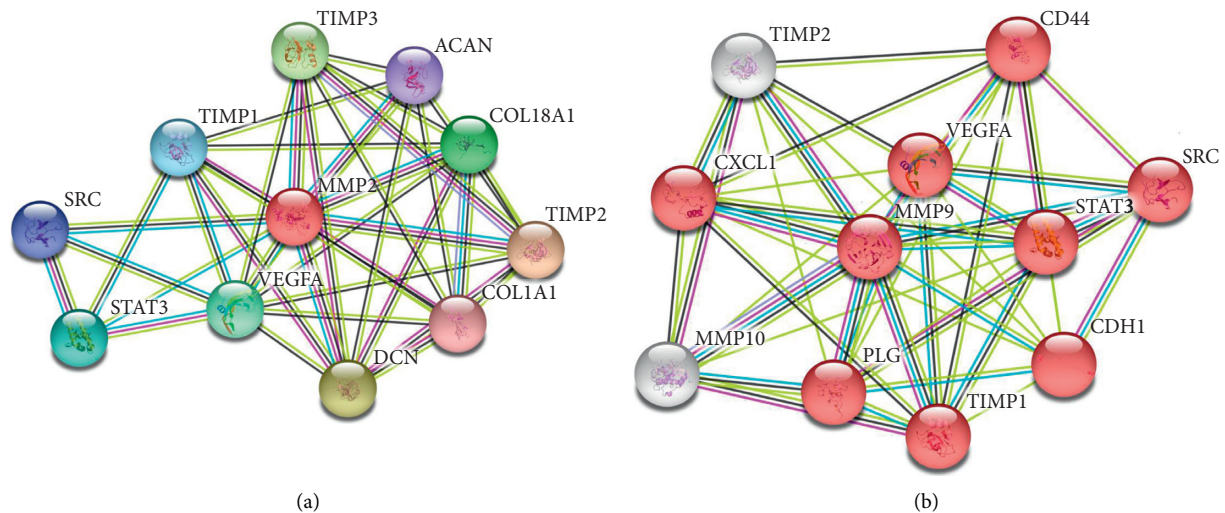


FIGURE 6: Potential MMP-2 and MMP-9 protein-protein interaction networks adopted from string database, version 11.0. (a) ACAN, aggrecan core protein; COL1A1, collagen alpha-1 (I) chain; COL18A1, collagen alpha-1 (XVIII) chain; DCN, cecorin; SRC, proto-oncogene tyrosine-protein kinase Src; STAT3, signal transducer and activator of transcription 3; TIMP 1/2/3, metalloproteinase inhibitor 1/2/3; VEGFA, vascular endothelial growth factor A. (b) CD44, cluster of differentiation 44; CDH1, cadherin-1; CXCL1, chemokine (C-X-C motif) ligand 1; MMP10, matrix metalloproteinase-10; PLG, plasminogen; SRC, proto-oncogene tyrosine-protein kinase Src; STAT3, signal transducer and activator of transcription 3; TIMP 1/2, metalloproteinase inhibitor 1/2; VEGFA, vascular endothelial growth factor A.

and MMP-9 might be the potential targets for preventing the progression of RB.

However, the present study still has its limitations. The molecular mechanisms by which MMP-2/MMP-9 which exert their effects on the biological behavior of RB tumor cells were not detected in this study. To get deeper understanding of MMP-2/MMP-9 effects on RB, STRING database (version 11.0) was applied to explore the potential protein-protein interactions (PPI). As demonstrated in the PPI networks of Figures 6(a) and 6(b), many proteins (described in the figure legends in detail) are closely associated with MMP-2/MMP-9. Moreover, possible coexpression, cooccurrence, metabolic pathways, and signal transduction pathways about MMP-2/MMP-2 with other proteins are obtained from the database as well.

In summary, our findings revealed that downregulation of MMP-2/MMP-9 induces the apoptosis and impairs the viability, migration, and invasion of RB tumor cells, providing a potential MMP target therapy in RB patients.

Abbreviations

ECM:	Extracellular matrix
FACS:	Fluorescence-activated cell sorting
MMP:	Matrix metalloproteinase
MTT:	3-(4,5-Dimethylthiazol-2-yl)-2,5-diphenyltetrazolium bromide
PPI:	Protein-protein interaction
RB:	Retinoblastoma
RNA:	Ribonucleic acid
RT-PCR:	Reverse transcription polymerase chain reaction
shRNA:	small hairpin RNA
siRNA:	small interfering RNA
WB:	Western blotting.

Data Availability

All data generated or analyzed during this study are included within this article.

Conflicts of Interest

The authors declare that they have no conflicts of interest.

Authors' Contributions

NNM, LZX, and ZZ designed the research; NNM and ZZ conducted the experiments and contributed equally to this work; CHS and LZX analyzed experimental data; NNM, ZZ, and LZX wrote the manuscript. All authors read and approved the final manuscript.

Acknowledgments

The authors thank the subjects who participated in the study.

References

- [1] H. Dimaras, K. Kimani, E. A. Dimba et al., "Retinoblastoma," *The Lancet*, vol. 379, no. 9824, pp. 1436–1446, 2012.
- [2] M. V. Ortiz and O. I. J. Dunkel, "Retinoblastoma," *Journal of Child Neurology*, vol. 31, no. 2, pp. 227–236, 2016.
- [3] D. H. S. A. Abramson and I. J. Dunkel, "Pediatric ophthalmic oncology: ocular diseases," in *Holland-Frei Cancer Medicine*, John Wiley & Sons, Hoboken, NJ, USA, 2003.
- [4] T. Kivela, "The epidemiological challenge of the most frequent eye cancer: retinoblastoma, an issue of birth and death," *British Journal of Ophthalmology*, vol. 93, no. 9, pp. 1129–1131, 2009.
- [5] D. H. Abramson, R. M. Ellsworth, N. Grumbach, and F. D. Kitchin, "Retinoblastoma: survival, age at detection and

- comparison 1914–1958, 1958–1983,” *Journal of Pediatric Ophthalmology and Strabismus*, vol. 22, no. 6, pp. 246–250, 1985.
- [6] A. R. Nelson, B. Fingleton, M. L. Rothenberg, and L. M. Matrisian, “Matrix metalloproteinases: biologic activity and clinical implications,” *Journal of Clinical Oncology*, vol. 18, no. 5, p. 1135, 2000.
- [7] J. H. Kim, J. H. Kim, C. S. Cho et al., “Differential roles of matrix metalloproteinase -9 and -2, depending on proliferation or differentiation of retinoblastoma cells,” *Investigative Ophthalmology & Visual Science*, vol. 51, no. 3, pp. 1783–1788, 2010.
- [8] T. Xiang, X. Xia, and W. Yan, “Expression of matrix metalloproteinases-2/-9 is associated with microvessel density in pancreatic cancer,” *American Journal of Therapeutics*, vol. 24, no. 4, pp. e431–e434, 2017.
- [9] K. Nishio, K. Motozawa, D. Omagari et al., “Comparison of MMP2 and MMP9 expression levels between primary and metastatic regions of oral squamous cell carcinoma,” *Journal of Oral Science*, vol. 58, no. 1, pp. 59–65, 2016.
- [10] L. Wang, Q. Wang, H.-L. Li, and L.-Y. Han, “Expression of MiR200a, miR93, metastasis-related gene RECK and MMP2/MMP9 in human cervical carcinoma—relationship with prognosis,” *Asian Pacific Journal of Cancer Prevention*, vol. 14, no. 3, pp. 2113–2118, 2013.
- [11] M. Adithi, V. Nalini, M. Kandalam, and S. Krishnakumar, “Expression of matrix metalloproteinases and their inhibitors in retinoblastoma,” *Journal of Pediatric Hematology/Oncology*, vol. 29, no. 6, pp. 399–405, 2007.
- [12] H. Long, B. Zhou, and F. G. Jiang, “Expression of MMP-2 and MMP-9 in retinoblastoma and their significance,” *International Journal of Ophthalmology*, vol. 4, no. 4, pp. 489–491, 2011.
- [13] A. H. Webb, B. T. Gao, Z. K. Goldsmith et al., “Inhibition of MMP-2 and MMP-9 decreases cellular migration, and angiogenesis in in vitro models of retinoblastoma,” *BMC Cancer*, vol. 17, no. 1, p. 434, 2017.
- [14] E. I. Deryugina and J. P. Quigley, “Matrix metalloproteinases and tumor metastasis,” *Cancer and Metastasis Reviews*, vol. 25, no. 1, pp. 9–34, 2006.
- [15] V. M. Villegas, D. J. Hess, A. Wildner, A. S. Gold, and T. G. Murray, “Retinoblastoma,” *Current Opinion in Ophthalmology*, vol. 24, no. 6, pp. 581–588, 2013.
- [16] P. M. Murphy, “Chemokines and the molecular basis of cancer metastasis,” *New England Journal of Medicine*, vol. 345, no. 11, pp. 833–835, 2001.
- [17] A. C. Chiang and J. Massagué, “Molecular basis of metastasis,” *New England Journal of Medicine*, vol. 359, no. 26, pp. 2814–2823, 2008.
- [18] S. Zhang, L. Li, J. Y. Lin, and H. J. Lin, “Imbalance between expression of matrix metalloproteinase-9 and tissue inhibitor of metalloproteinase-1 in invasiveness and metastasis of human gastric carcinoma,” *World Journal of Gastroenterology*, vol. 9, no. 5, pp. 899–904, 2003.
- [19] S. D. Shapiro, “Matrix metalloproteinase degradation of extracellular matrix: biological consequences,” *Current Opinion in Cell Biology*, vol. 10, no. 5, pp. 602–608, 1998.
- [20] C. B. Moore, E. H. Guthrie, M. T. Huang, and D. J. Taxman, “Short hairpin RNA (shRNA): design, delivery, and assessment of gene knockdown,” *Methods in Molecular Biology*, vol. 629, no. 629, pp. 141–158, 2010.