

# Photomicrographs of Giemsa stained blood smears demonstrating parasite manifestation and clearance

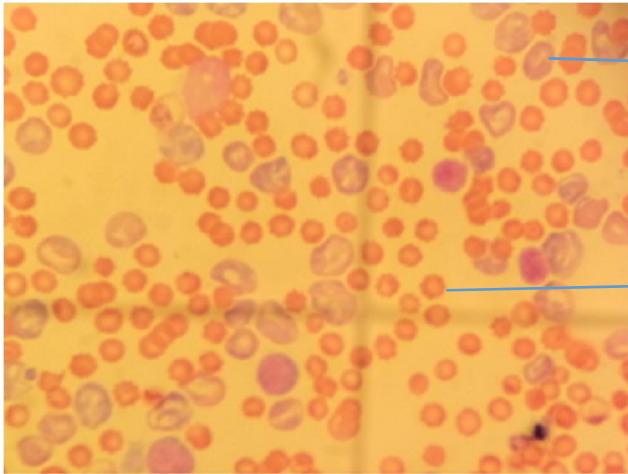
Plasmodium infected mice and normal mice



*Infected plasmodium liver*

Normal liver

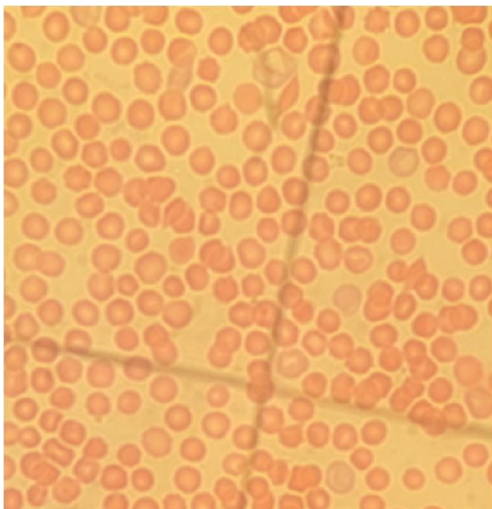
Parasitemia in donor mouse



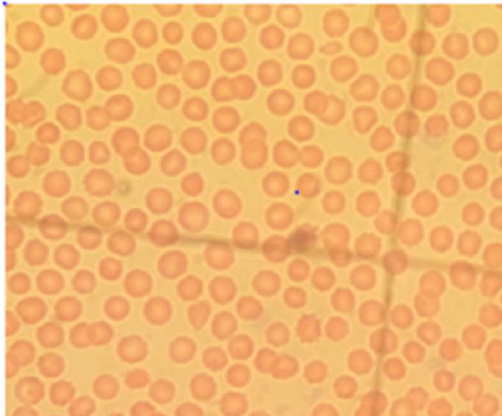
*Infected red blood cells*

*Normal red blood cells*

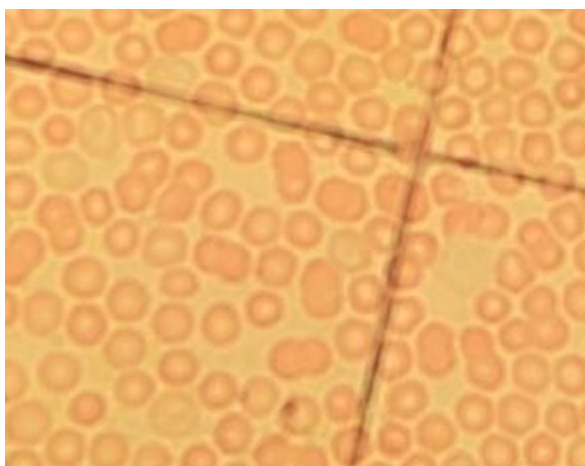
*Parasite exposure to peptide extract in mice*



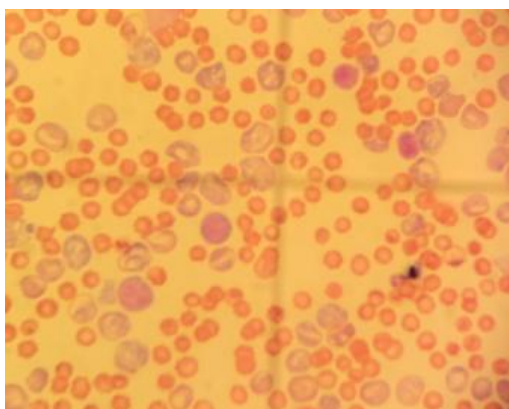
*\*Parasite exposure to methanol extract in mice*



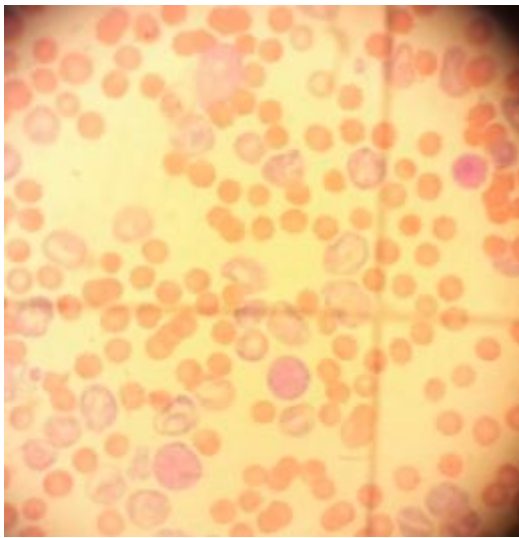
*\*Parasite exposure to CQ in mice*



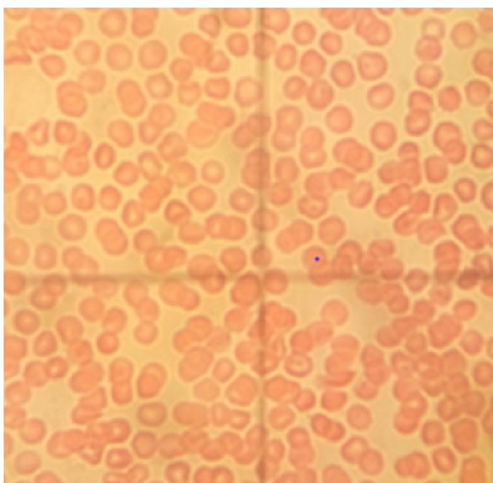
*\*W2 strain Parasite manifestation after culturing in vitro*



*\*D6 strain Parasite manifestation after culturing in vitro*



*\* W2 Parasite inhibition after treatment in vitro*



\* D6 Parasite inhibition after treatment *in vitro*

