

Supplementary Material

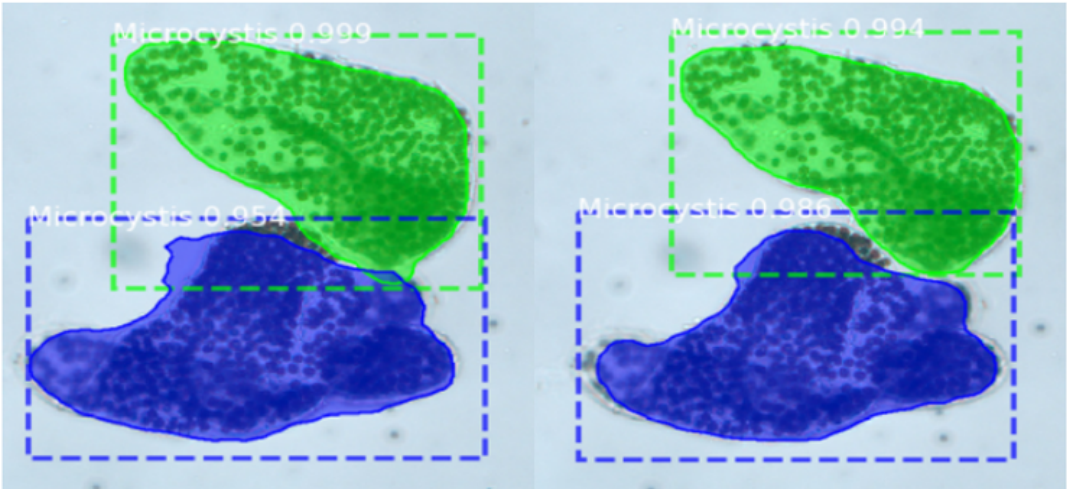


Figure S1. The instance segmentation examples of Mask R-CNN (left) and Weighted R-CNN (right).

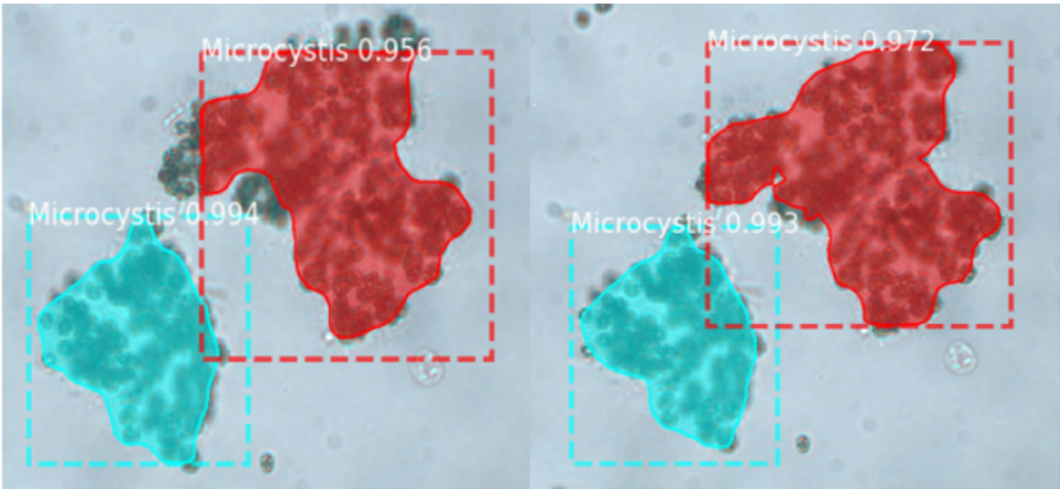


Figure S2. The instance segmentation examples of Mask R-CNN (left) and Weighted R-CNN (right).

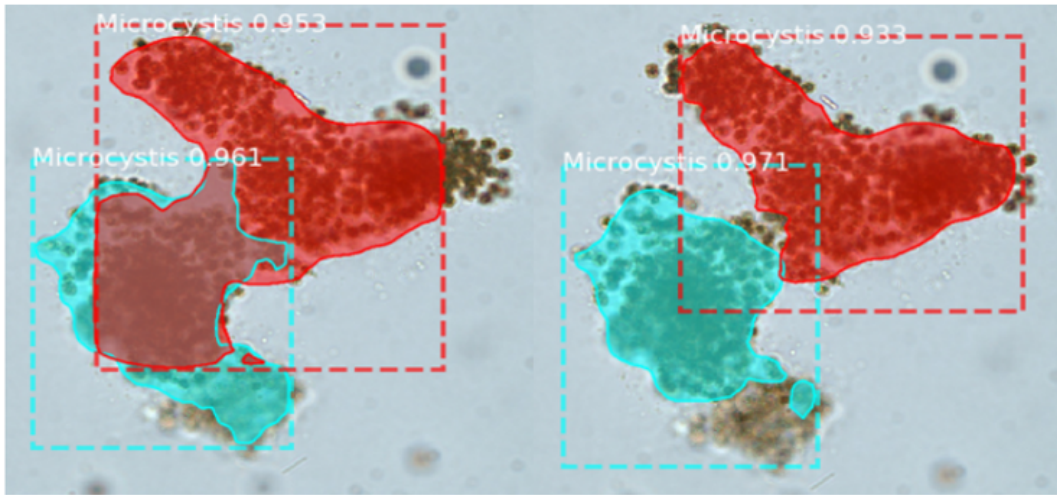


Figure S3. The instance segmentation examples of Mask R-CNN (left) and Weighted R-CNN (right).

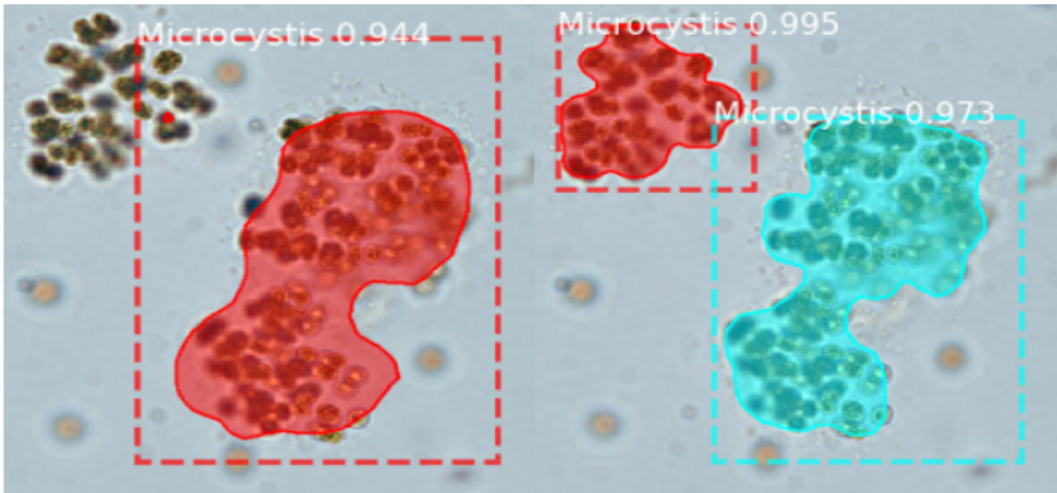


Figure S4. The instance segmentation examples of Mask R-CNN (left) and Weighted R-CNN (right).

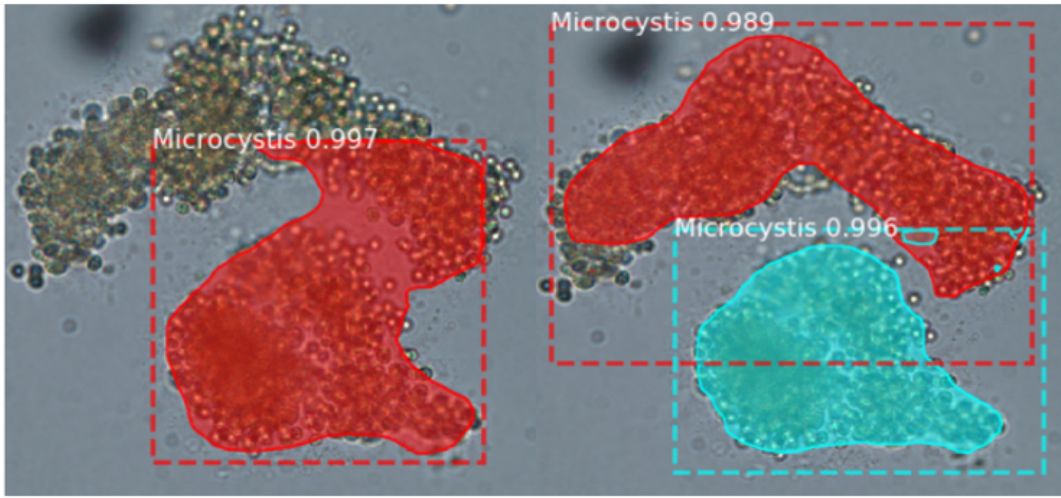


Figure S5. The instance segmentation examples of Mask R-CNN (left) and Weighted R-CNN (right).

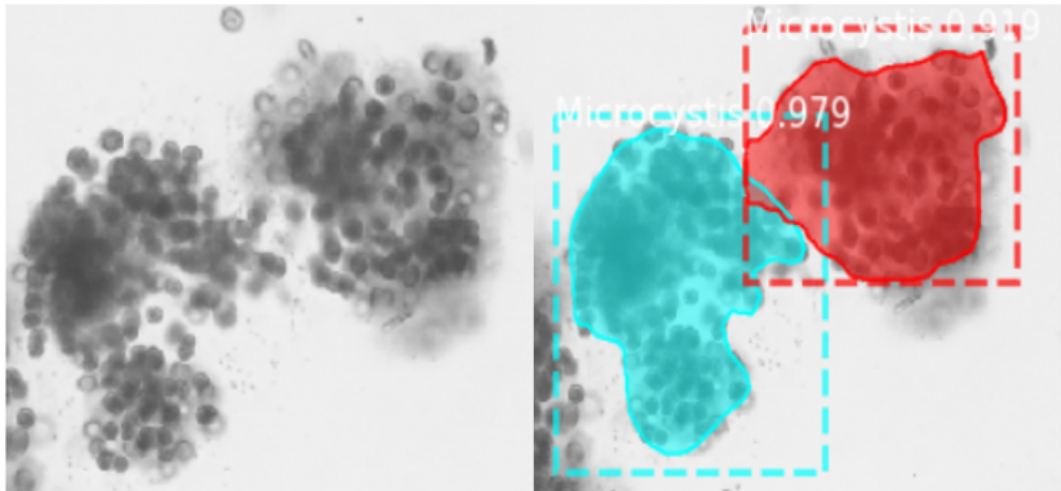


Figure S6. The instance segmentation examples of Mask R-CNN (left) and Weighted R-CNN (right).

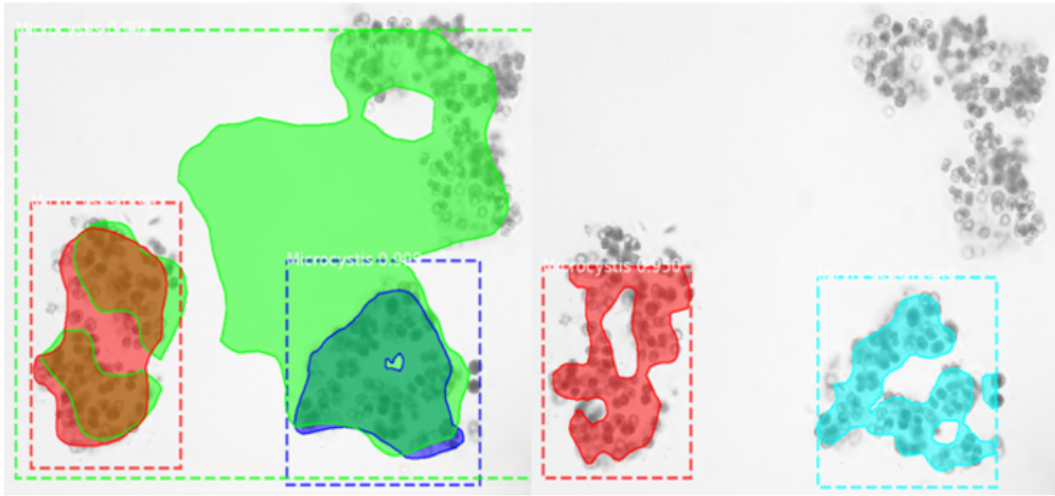


Figure S7. The instance segmentation examples of Mask R-CNN (left) and Weighted R-CNN (right).

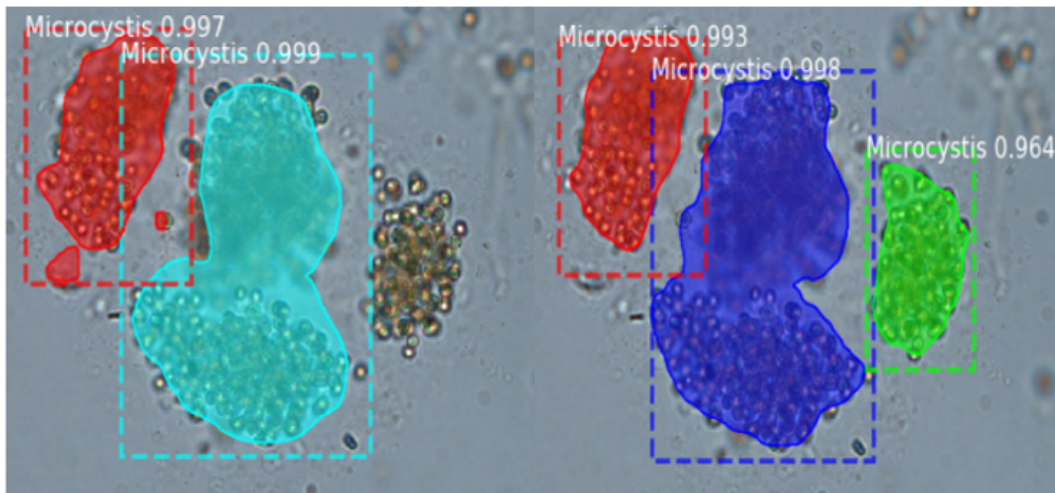


Figure S8. The instance segmentation examples of Mask R-CNN (left) and Weighted R-CNN (right).

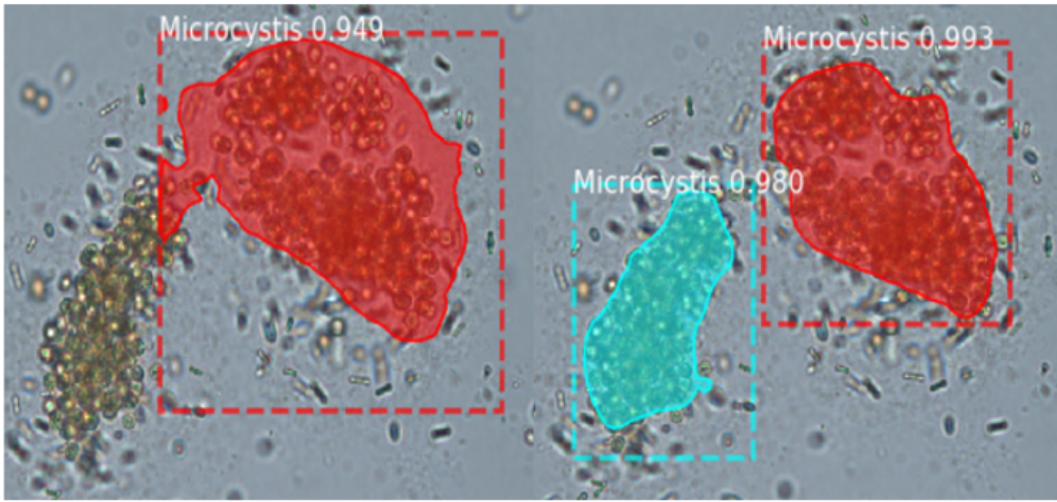


Figure S9. The instance segmentation examples of Mask R-CNN (left) and Weighted R-CNN (right).

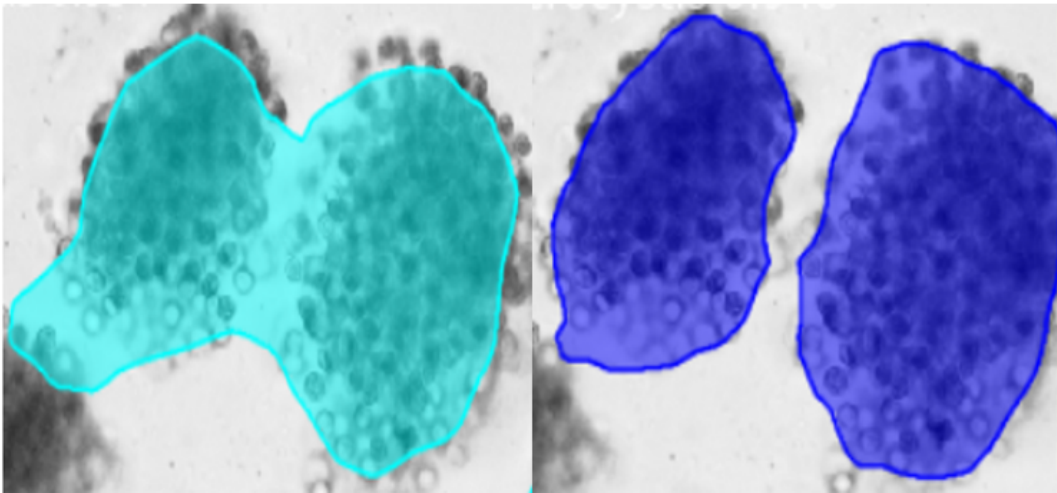


Figure S10. The instance segmentation examples of Mask R-CNN (left) and Weighted R-CNN (right).

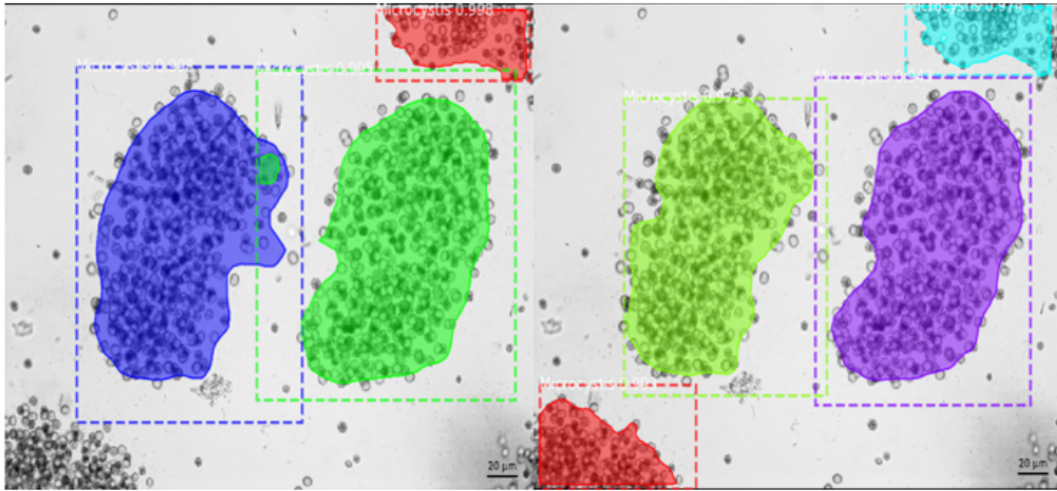


Figure S11. The instance segmentation examples of Mask R-CNN (left) and Weighted R-CNN (right).

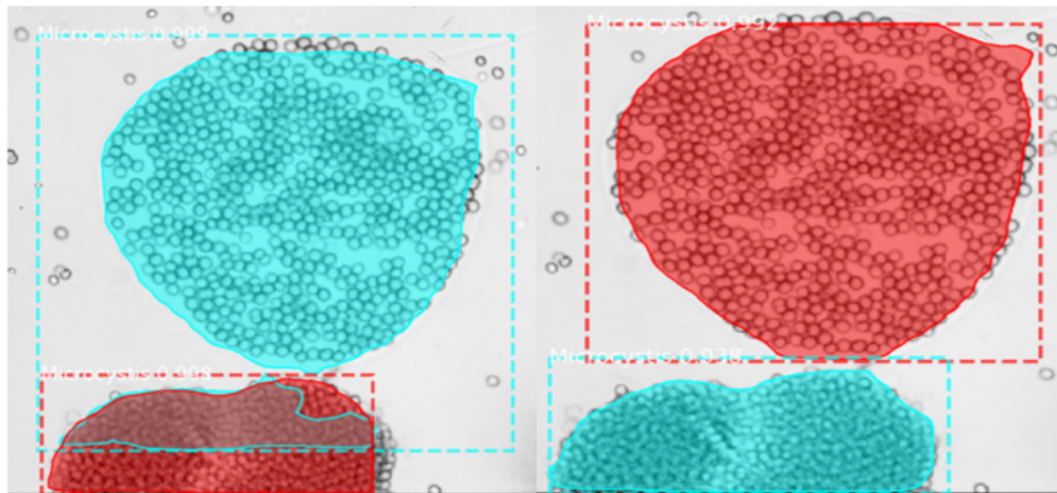


Figure S12. The instance segmentation examples of Mask R-CNN (left) and Weighted R-CNN (right).