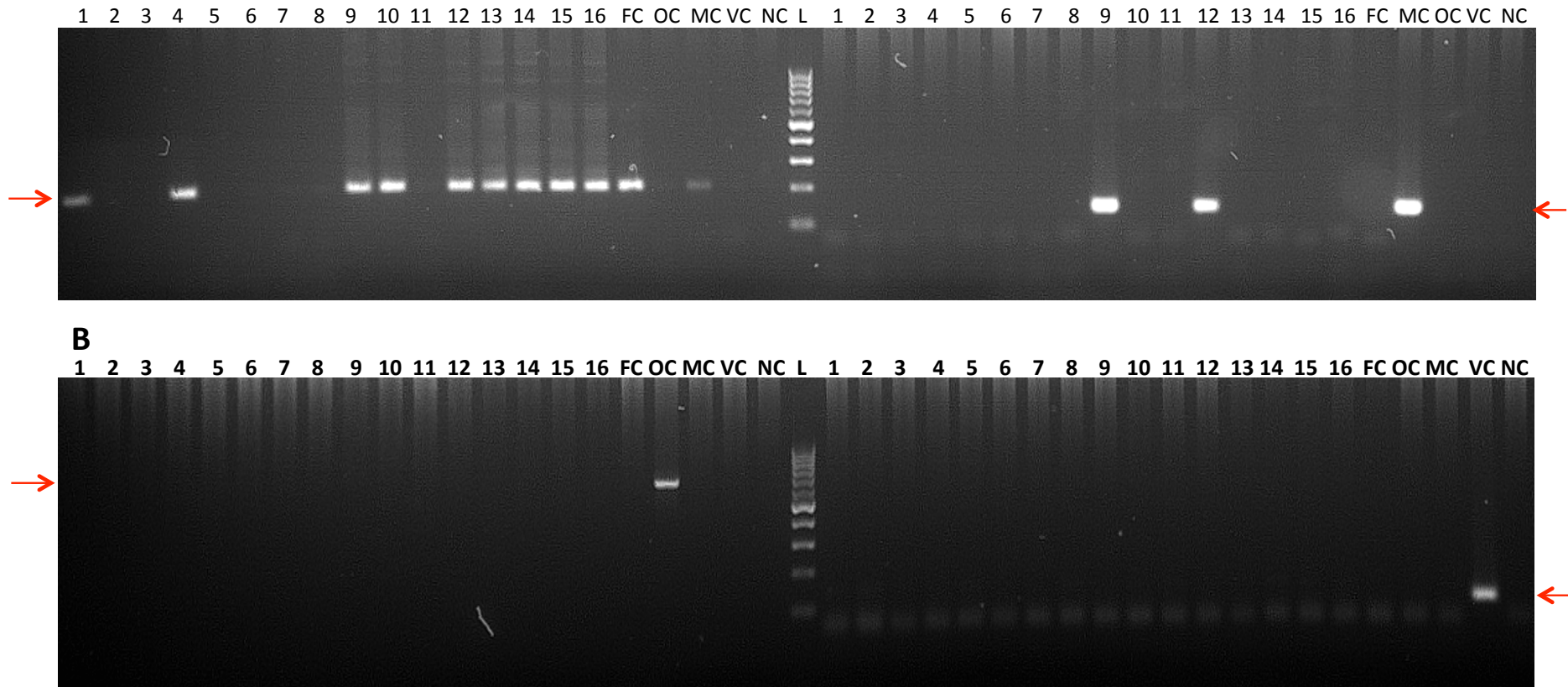


Supplementary file Figure S1. Representative images of *P. falciparum* , *P. malariae*, *P. ovale* and *P. vivax* PCR products



A: Left, *P. falciparum* (205 bp); Right, *P. malariae* (144 bp). **B:** Left, *P. ovale* (787 bp); Right, *P. vivax* (117 bp)
L, 100 bp ladder, with the lowest band representing 100 bp and the highest 1000 bp, with each band being 100 bp greater than the band below it.

Lanes **1-16** are representative samples from children from Kuful; **NC** is the negative control (water); **PC** is gDNA from 3D7 (MRA-102, *P. falciparum* control); **OC** is gDNA from a *P. ovale* field isolate; **MC** is gDNA from a Pf/Pm mixed infection (field isolate) used as an in-house *P. mal* control; **VC** is gDNA from *P. vivax* (obtained as part of the 2019 WHO NAAT EQA Scheme)