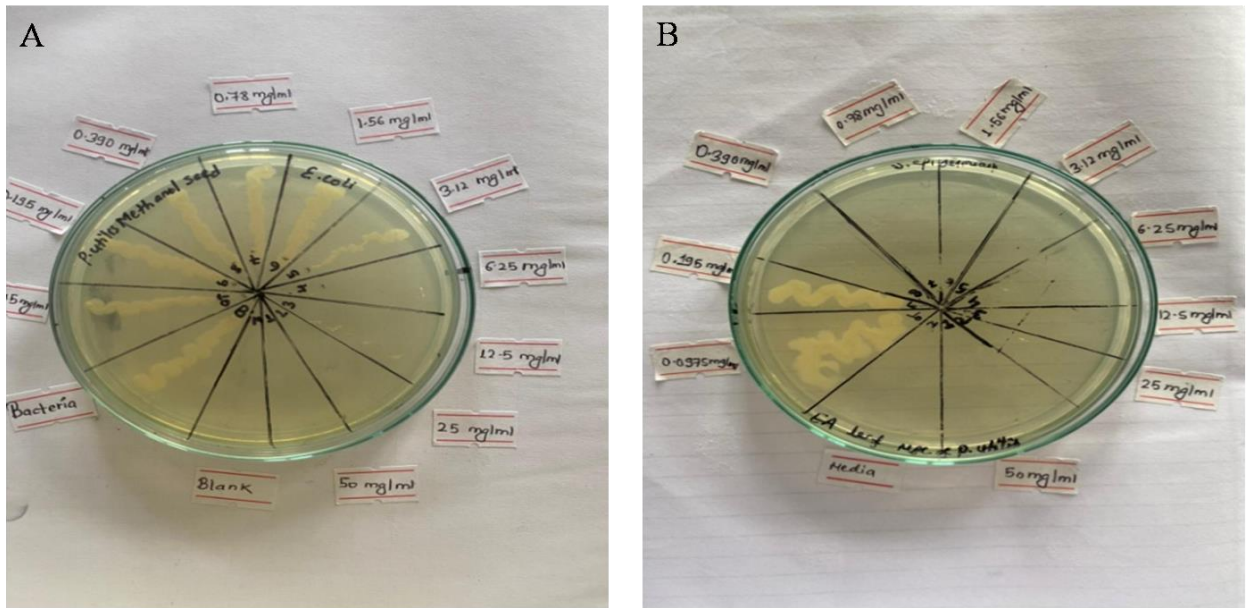




FIGURE S1: ZOI produced by *P. utilis* ethyl acetate leaf extract (A) and methanolic leaf extract (B), against *S. epidermidis*.



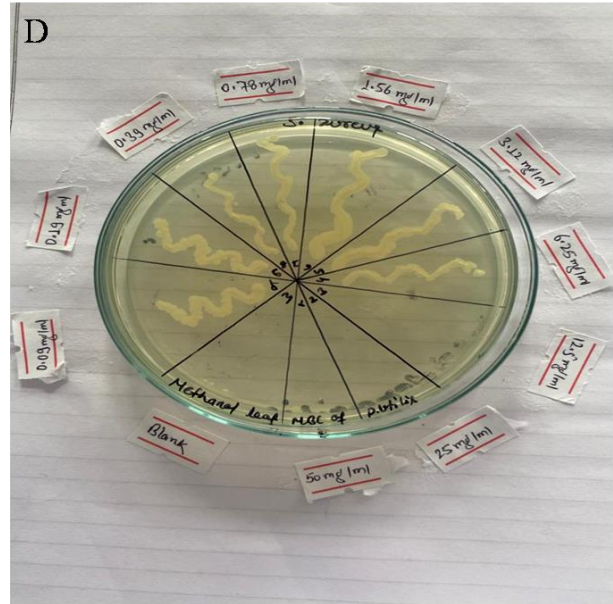
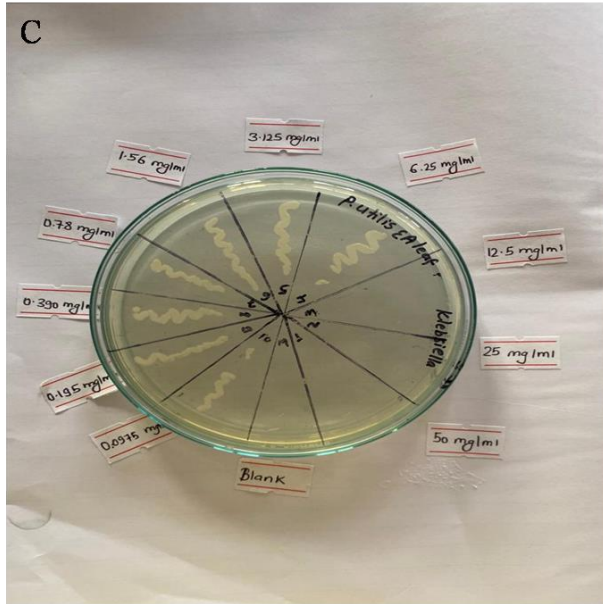


FIGURE S2: MBC determination of *P. utilis* extracts (A: methanolic seed extract against *E. coli*, B: ethyl acetate leaf extract against *S. epidermidis*; C: ethyl acetate leaf extract against *K. pneumoniae*; D: methanolic leaf extract against *S. aureus*).