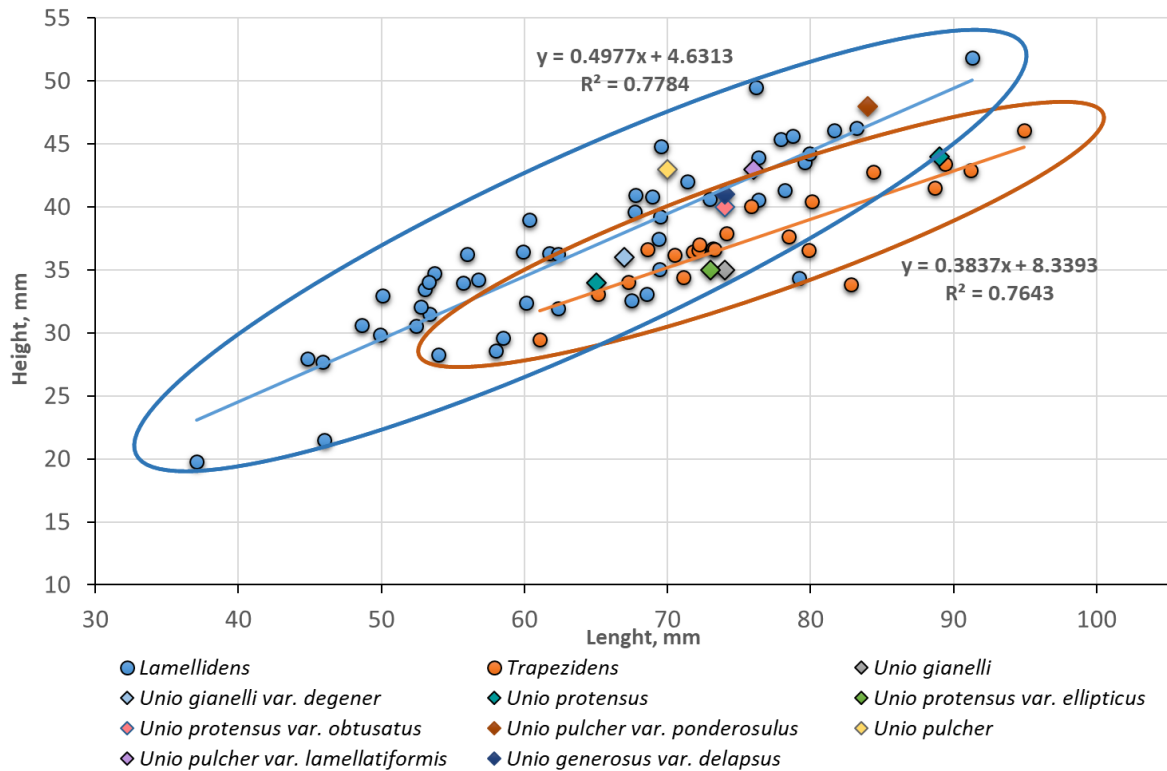


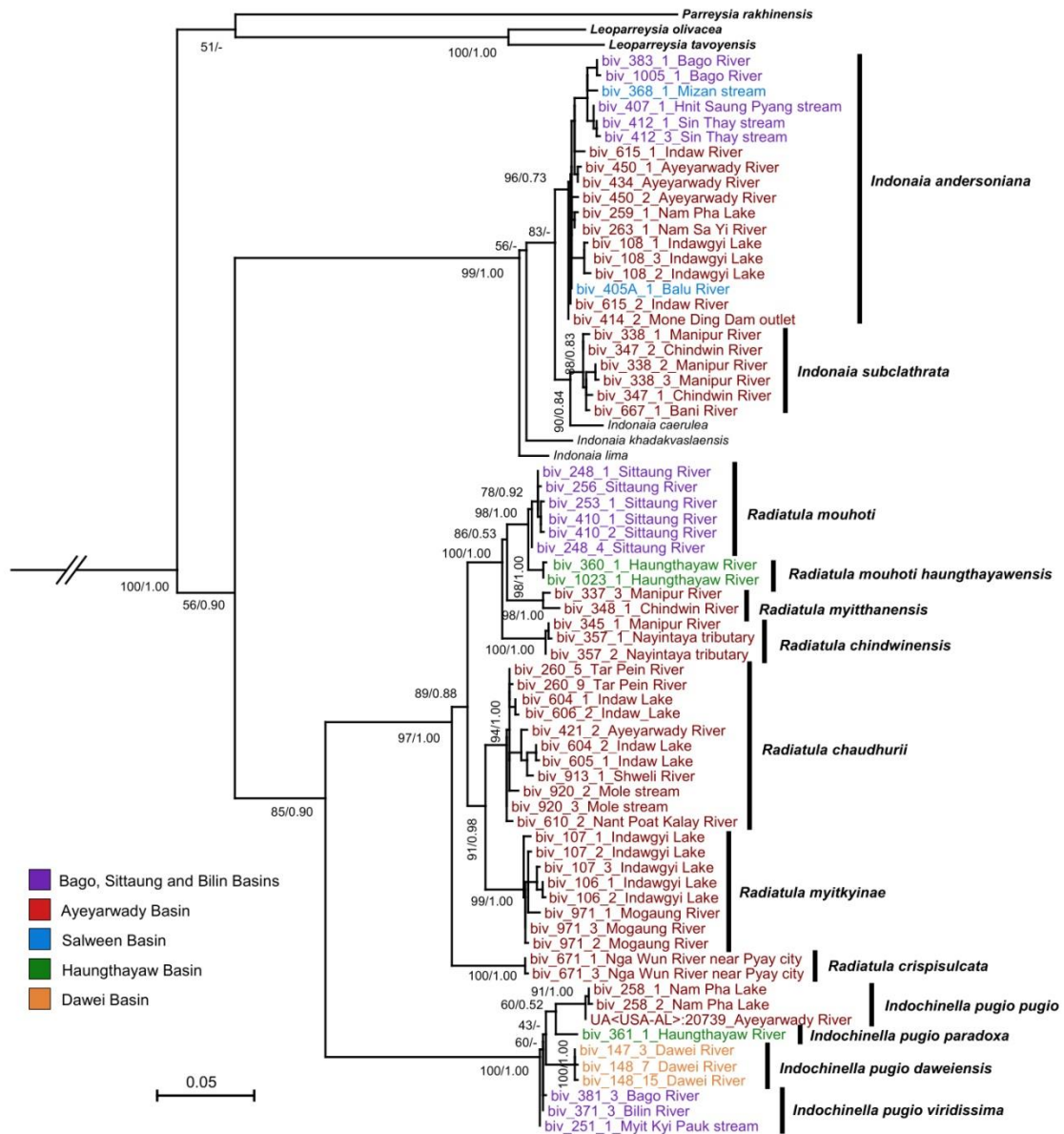
# Follow the footsteps of Leonardo Fea: An example of an integrative revision of freshwater mussel taxa described from the former British Burma (Myanmar)

Ivan N. Bolotov, Ekaterina S. Konopleva, Ilya V. Vikhrev, Than Win, Mikhail Yu. Gofarov, Alexander V. Kondakov, Alena A. Tomilova, Zau Lunn, Nyein Chan, Rajeev Pasupuleti & Nalluri V. Subba Rao

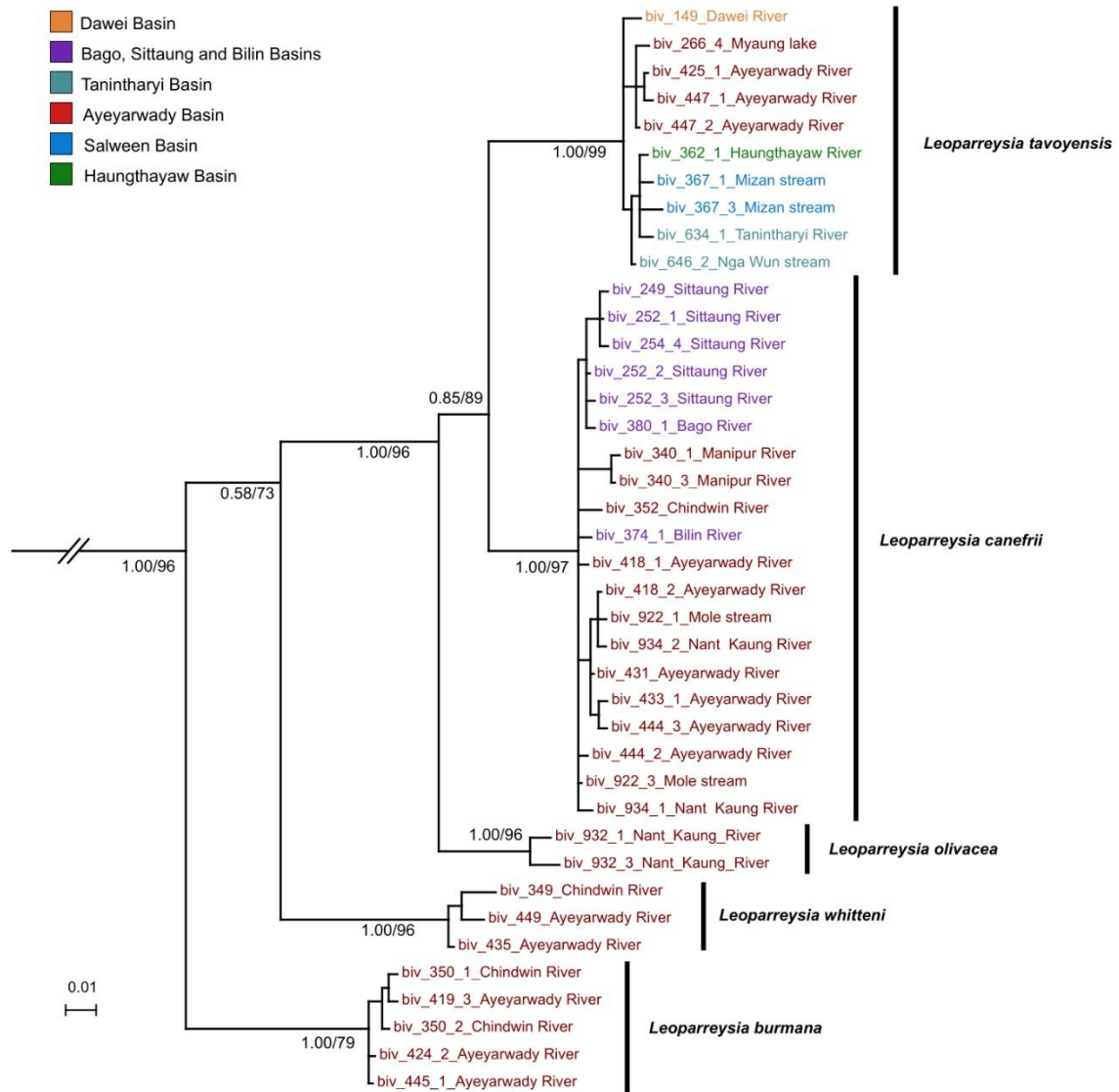
## Supporting information



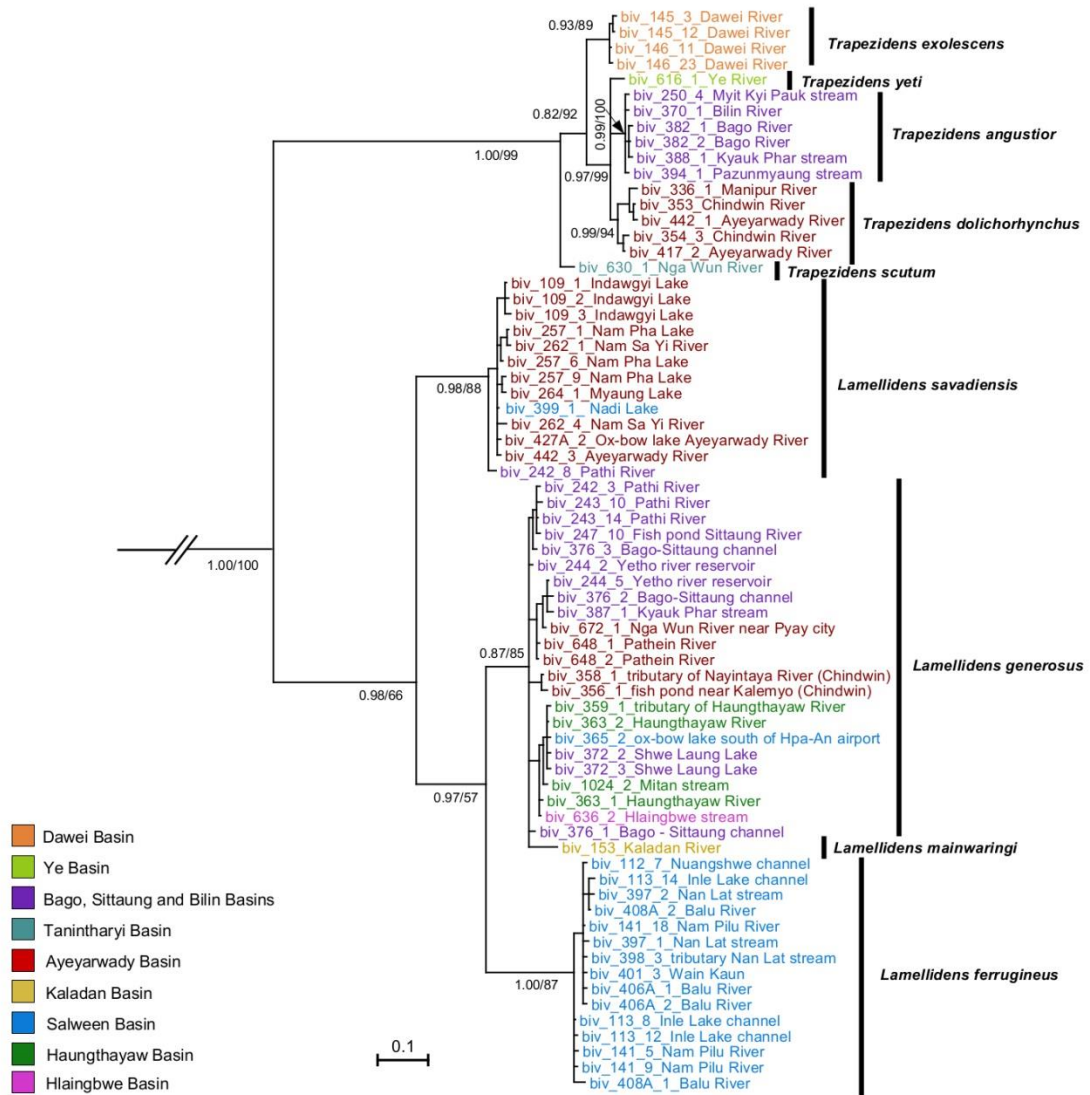
**Figure S1.** Shell proportions of *Lamellidens* and *Trapezidens* based on the shell elongation index (SEI). The bold lines show a 95 % confidence ellipses.



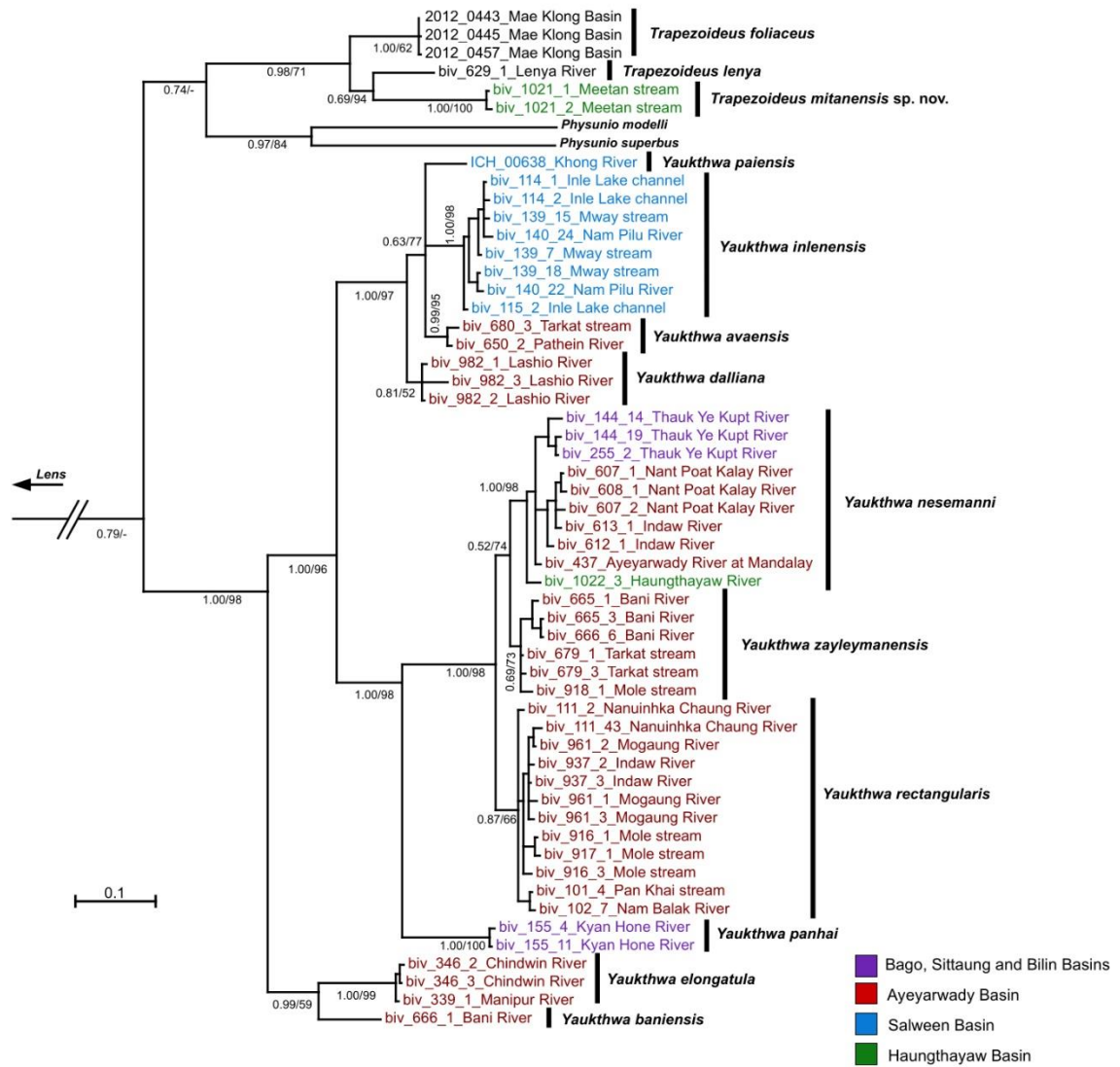
**Figure S2.** Maximum likelihood phylogeny of the mitochondrial data set (three codons of *COI*) of the Indocheinellini from Myanmar. Scale bar indicates the branch lengths. Black numbers near nodes are ML ultrafast bootstrap support values (BS) / Bayesian Posterior Probabilities (BPP). River basins are shown by different colors. Outgroup (*Gibbosula laosensis*, *Margaritifera dahurica*, *Parreysia rakhinensis*, *Leoparreysia olivacea*, and *L. tavoyensis*) is not shown.



**Figure S3.** Maximum likelihood phylogeny of the mitochondrial data set (three codons of *COI*) of the Leopardreysiini from Myanmar. Scale bar indicates the branch lengths. Black numbers near nodes are ML ultrafast bootstrap support values (BS) / Bayesian Posterior Probabilities (BPP). River basins are shown by different colors. Outgroup (*Gibbosula laosensis*, *Margaritifera dahurica*, and *Parreysia rakhinensis*) is not shown.



**Figure S4.** Bayesian phylogeny of the mitochondrial data set (three codons of *COI*) of the Lamellidentini from Myanmar. Scale bar indicates the branch lengths. Black numbers near nodes are Bayesian Posterior Probabilities (BPP) / ML ultrafast bootstrap support values (BS). River basins are shown by different colors. Outgroup (*Gonidea angulata*, *Leguminaia wheatleyi*, *Potomida littoralis*, and *Lamprotula leai*) is not shown.



**Figure S5.** Bayesian phylogeny of the mitochondrial data set (three codons of *COI*) of the Contradentini from Myanmar. Scale bar indicates the branch lengths. Black numbers near nodes are Bayesian Posterior Probabilities (BPP) / ML ultrafast bootstrap support values (BS). River basins are shown by different colors. Outgroup (*Gonidea angulata*, *Leguminaia wheatleyi*, *Potomida littoralis*, and *Lamprotula leai*) and the haplotypes of the *Lens* genus are not shown.

**Table S1.** List of sequences of Unionidae from South-East Asia used in this study.

Species	Locality	Specimen Voucher*	NCBI's GenBank acc. nos.			Latitude	Longitude
			COI	16S rRNA	28S rRNA		
UNIONIDAE Rafinesque, 1820							
Gonideinae Ortmann, 1916							
Pseudodontini Frierson, 1927							
Pseudodontina s. str.							
Pseudodon Gould, 1844							
Pseudodon sp.	Myanmar: Ayeyarwady Basin, a tributary of Lake Indawgyi	RMBH: biv 110/5	KX865858	KX865859	KX865860	25.1209	96.2812
Pseudodon sp.	Myanmar: Ayeyarwady Basin, a tributary of Lake Indawgyi	RMBH: biv 110/10	KX865629	KX865630	KX865631	25.1209	96.2812
Pseudodon sp.	Myanmar: Ayeyarwady Basin, a tributary of Lake Indawgyi	RMBH: biv 110/11	KX865730	KX865731	KX865732	25.1209	96.2812
P. bogani Bolotov, Kondakov & Konopleva, 2017	Myanmar: Sittaung Basin, Kanni River	RMBH: biv 241/4	MF352216	MF352290	MF352348	19.0545	96.5131
P. bogani Bolotov, Kondakov & Konopleva, 2017	Myanmar: Sittaung Basin, Kanni River	RMBH: biv 241/5	MF352217	MF352291	MF352349	19.0545	96.5131
P. bogani Bolotov, Kondakov & Konopleva, 2017	Myanmar: Sittaung Basin, Kanni River	RMBH: biv 241/8	MF352218	MF352292	MF352350	19.0545	96.5131
P. manueli Konopleva, Kondakov & Vikhrev, 2017	Myanmar: Sittaung Basin, Pyowne River	RMBH: biv 246/1	MF352228	MF352300	MF352358	18.9694	96.5309
P. manueli Konopleva, Kondakov & Vikhrev, 2017	Myanmar: Sittaung Basin, Pyowne River	RMBH: biv 246/3	MF352229	MF352301	MF352359	18.9694	96.5309
P. manueli Konopleva, Kondakov & Vikhrev, 2017	Myanmar: Sittaung Basin, Pyowne River	RMBH: biv 246/8	MF352230	MF352302	MF352360	18.9694	96.5309
P. salweenianus (Gould, 1844)	Myanmar: Salween Basin, unnamed stream	RMBH: biv 639/1	MN275037	MN307237	MN307178	17.0292	97.8100
P. salweenianus (Gould, 1844)	Myanmar: Salween Basin, Hlangbwe Stream	RMBH: biv 674/1	MN275040	MN307238	MN307179	17.0292	97.8099
P. salweenianus (Gould, 1844)	Myanmar: Salween Basin, Haungthayaw River, Donthami Maw Stream	RMBH: biv 1025	OL597609	n/a	n/a	16.0026	98.3796
P. kayinensis Bolotov et al., 2020	Myanmar: Ataran Basin, Winyaw River	RMBH: biv 618/3	MN275045	MN307240	MN307181	15.6685	97.9496
P. kayinensis Bolotov et al., 2020	Myanmar: Ataran River	RMBH: biv 637/1	MN275046	MN307241	MN307182	15.6132	98.2363
P. kayinensis Bolotov et al., 2020	Myanmar: Salween Basin, unnamed Stream	RMBH: biv 638/1	MN275049	MN307242	MN307183	17.0292	97.8100
P. kayinensis Bolotov et al., 2020	Myanmar: Salween Basin, Haungthayaw River, Donthami Maw Stream	RMBH: biv 1026/1	OL597610	n/a	n/a	16.0026	98.3796
P. kayinensis Bolotov et al., 2020	Myanmar: Salween Basin, Haungthayaw River, Donthami Maw Stream	RMBH: biv 1026/2	OL597611	n/a	n/a	16.0026	98.3796
P. kayinensis Bolotov et al., 2020	Myanmar: Salween Basin, Haungthayaw River, Donthami Maw Stream	RMBH: biv 1026/3	OL597612	n/a	n/a	16.0026	98.3796
Pilsbryoconchina Bolotov, Vikhrev & Tumpeesuwan, 2017							
Monodontina Conrad, 1853							
Monodontina lenyanensis Bolotov et al., 2020	Myanmar: Lenya Basin, 14 mile stream	RMBH: biv 628/1	MN275054	MN307245	MN307186	11.3508	99.1093
M. lenyanensis Bolotov et al., 2020	Myanmar: Lenya Basin, 14 mile stream	RMBH: biv 628/2	MN275055	MN307246	MN307187	11.3508	99.1093
M. lenyanensis Bolotov et al., 2020	Myanmar: Lenya Basin, 14 mile stream	RMBH: biv 628/3	MN275056	MN307247	MN307188	11.3508	99.1093

<b><i>Sundadontina</i> Bolotov et al., 2020</b>							
<i>Sundadontina tanintharyiensis</i> Bolotov et al., 2020	Myanmar: Lenya Basin, Nauk Pyan Stream	RMBH: biv 643/4	MN275057	MN307248	MN307189	11.7620	99.1124
<b>Contradentini Modell, 1942</b>							
<b><i>Lens</i> Simpson, 1900</b>							
<i>Lens contradens</i> (Lea, 1838)	West Malaysia: Pahang River	ANSP:389059	DQ191411	n/a	AF400692	n/a	n/a
<i>L. micropterus</i> (Morelet, 1866)	Cambodia: Mekong Basin	UMMZ:304652	KP795034	KP795054	KP795016	n/a	n/a
<i>L. eximius</i> (Lea, 1856)	Thailand: Mekong Basin, Chi River	RMBH: biv 127 /1	KX865936	n/a	KX865807	16.2158	103.2526
<i>L. comptus</i> (Deshayes & Jullien, 1874)	Laos: Mekong Basin, Nam Long River	RMBH: biv 182/3	KX865930	KX865684	KX865801	21.7700	102.1863
<i>L. misellus</i> (Morelet, 1865)	Thailand: Chao Phraya Basin, Ping River	2014-0685	MH345986	MH346026	MH346006	19.2859	98.9680
<i>L. pallegoixi</i> (Sowerby, 1867)	Thailand: Mekong Basin, Mun River drainage, Pao River	2014-0614	MH345989	MH346029	MH346009	16.3402	103.5758
<i>L. rolfbrandti</i> (Jeratthitikul & Panha, 2021)	Thailand: Huai Luang River at Don Kloi Village, Phibun Rak District, Udon Thani Province	UNI0229	MG582018	n/a	n/a	n/a	n/a
<i>L. maenamensis</i> Pfeiffer et al., 2021	Thailand: Mekong Basin	MUMNHUNIO 946	MG582015	n/a	n/a	n/a	n/a
<i>L. novoselovi</i> (Konopleva et al. 2019)	Laos: Mekong Basin, a tributary of Nam Fa River near Vieng Phou Kha	RMBH: biv 202/2	KY561630	KY561645	KY561662	20.6820	101.0794
<b><i>Trapezoideus</i> Simpson, 1900</b>							
<i>Trapezoideus foliaceus</i> (Gould, 1843)	Thailand: Mae Klong Basin, Pracham Mai River	2012-0443	MH345979	MH346019	MH345999	14.6598	98.5342
<i>T. foliaceus</i> (Gould, 1843)	Thailand: Mae Klong Basin, Pracham Mai River	2012-0445	MH345980	MH346020	MH346000	14.6598	98.5342
<i>T. foliaceus</i> (Gould, 1843)	Thailand: Mae Klong Basin, Pracham Mai River	2012-0457	MH345981	MH346021	MH346001	15.2232	98.4465
<i>T. lenya</i> Bolotov et al., 2020	Myanmar: Lenya Basin, 14 mile stream	RMBH: biv 629/1	MN275067	MN307256	MN307197	11.3508	99.1093
<i>T. lenya</i> Bolotov et al., 2020	Myanmar: Lenya Basin, 14 mile stream	RMBH: biv 629/2	MN275068	MN307257	MN307198	11.3508	99.1093
<i>T. lenya</i> Bolotov et al., 2020	Myanmar: Lenya Basin, 14 mile stream	RMBH: biv 629/3	MN275069	MN307258	MN307199	11.3508	99.1093
<i>T. mitanensis</i> <b>sp. nov.</b>	Myanmar: Haungthayaw Basin, Mitan Stream	RMBH: biv 1021/1	OL597613	ON142670	ON171238	16.0019	98.4064
<i>T. mitanensis</i> <b>sp. nov.</b>	Myanmar: Haungthayaw Basin, Mitan Stream	RMBH: biv 1021/2	OL597614	OL598370	OL598384	16.0019	98.4064
<i>T. mitanensis</i> <b>sp. nov.</b>	Myanmar: Haungthayaw Basin, Mitan Stream	RMBH: biv 1021/3	OL597615	n/a	n/a	16.0019	98.4064
<i>T. mitanensis</i> <b>sp. nov.</b>	Myanmar: Haungthayaw River	RMBH: biv 1022/1	OL597616	OL598371	OL598385	15.9620	98.4152
<i>T. mitanensis</i> <b>sp. nov.</b>	Myanmar: Haungthayaw River	RMBH: biv 1022/2	OL597617	OL598372	OL598386	15.9620	98.4152
<b><i>Physunio</i> Simpson, 1900</b>							
<i>Physunio modelli</i> Brandt, 1974	Thailand: Mekong Basin, Chi River	RMBH: biv 125/2	KX865883	KX865654	KX865754	16.2258	103.3007
<i>P. superbus</i> (Lea, 1843)	Malaysia	BIV1776	KX051278	n/a	n/a	n/a	n/a
<b><i>Yaukthwa</i> Konopleva et al., 2019</b>							
<i>Yaukthwa nesemannii</i> (Konopleva, Vikhrev & Bolotov, 2017)	Myanmar: Sittaung Basin, Thauk Ye Kupt River	RMBH: biv 144/14	KX865906	KX865663	KX865777	19.3075	96.7219
<i>Y. nesemannii</i> (Konopleva, Vikhrev & Bolotov, 2017)	Myanmar: Sittaung Basin, Thauk Ye Kupt River	RMBH: biv 144/25	KX865907	KX865664	KX865778	19.3075	96.7219
<i>Y. nesemannii</i> (Konopleva, Vikhrev & Bolotov, 2017)	Myanmar: Sittaung Basin, Thauk Ye Kupt River	RMBH: biv 144/19	KX865908	KX865665	KX865779	19.3075	96.7219
<i>Y. nesemannii</i> (Konopleva, Vikhrev & Bolotov, 2017)	Myanmar: Sittaung Basin, Thauk Ye Kupt River	RMBH: biv 255/2	MF352254	n/a	MF352379	18.9840	96.4361



<i>Y. nesemanni</i> (Konopleva, Vikhrev & Bolotov, 2017)	Myanmar: Sittaung Basin, Thauk Ye Kupt River	RMBH: biv 255/3	MF352255	n/a	MF352380	18.9840	96.4361
<i>Y. nesemanni</i> (Konopleva, Vikhrev & Bolotov, 2017)	Myanmar: Sittaung Basin, Thauk Ye Kupt River	RMBH: biv 255/4	MF352256	n/a	MF352381	18.9840	96.4361
<i>Y. nesemanni</i> (Konopleva, Vikhrev & Bolotov, 2017)	Myanmar: Ayeyarwady Basin, Chindwin River	RMBH: biv 351	OL597618	n/a	n/a	23.1499	94.3629
<i>Y. nesemanni</i> (Konopleva, Vikhrev & Bolotov, 2017)	Myanmar: Sittaung Basin, Cho River	RMBH: biv 405/1	OL597619	n/a	n/a	19.5069	96.5618
<i>Y. nesemanni</i> (Konopleva, Vikhrev & Bolotov, 2017)	Myanmar: Sittaung Basin, Cho River	RMBH: biv 405/3	OL597620	n/a	n/a	19.5069	96.5618
<i>Y. nesemanni</i> (Konopleva, Vikhrev & Bolotov, 2017)	Myanmar: Ayeyarwady River near Mandalay	RMBH: biv 437	OL597621	n/a	n/a	21.9574	96.0510
<i>Y. nesemanni</i> (Konopleva, Vikhrev & Bolotov, 2017)	Myanmar: Ayeyarwady Basin, Nant Poat Kalay River	RMBH: biv 607/1	OL597622	n/a	n/a	24.2130	96.1089
<i>Y. nesemanni</i> (Konopleva, Vikhrev & Bolotov, 2017)	Myanmar: Ayeyarwady Basin, Nant Poat Kalay River	RMBH: biv 607/2	OL597623	n/a	n/a	24.2130	96.1089
<i>Y. nesemanni</i> (Konopleva, Vikhrev & Bolotov, 2017)	Myanmar: Ayeyarwady Basin, Nant Poat Kalay River	RMBH: biv 607/3	OL597624	n/a	n/a	24.2130	96.1089
<i>Y. nesemanni</i> (Konopleva, Vikhrev & Bolotov, 2017)	Myanmar: Ayeyarwady Basin, Nant Poat Kalay River	RMBH: biv 608/1	OL597625	n/a	n/a	24.2130	96.1089
<i>Y. nesemanni</i> (Konopleva, Vikhrev & Bolotov, 2017)	Myanmar: Ayeyarwady Basin, Nant Poat Kalay River	RMBH: biv 608/2	OL597626	n/a	n/a	24.2130	96.1089
<i>Y. nesemanni</i> (Konopleva, Vikhrev & Bolotov, 2017)	Myanmar: Ayeyarwady Basin, Nant Poat Kalay River	RMBH: biv 608/3	OL597627	n/a	n/a	24.2130	96.1089
<i>Y. nesemanni</i> (Konopleva, Vikhrev & Bolotov, 2017)	Myanmar: Ayeyarwady Basin, Indaw River near Sell Ywar village	RMBH: biv 612/1	OL597628	n/a	n/a	24.2123	96.0819
<i>Y. nesemanni</i> (Konopleva, Vikhrev & Bolotov, 2017)	Myanmar: Ayeyarwady Basin, Indaw River near Sell Ywar village	RMBH: biv 612/2	OL597629	n/a	n/a	24.2123	96.0819
<i>Y. nesemanni</i> (Konopleva, Vikhrev & Bolotov, 2017)	Myanmar: Ayeyarwady Basin, Indaw River near Sell Ywar village	RMBH: biv 612/3	OL597630	n/a	n/a	24.2123	96.0819
<i>Y. nesemanni</i> (Konopleva, Vikhrev & Bolotov, 2017)	Myanmar: Ayeyarwady Basin, Indaw River near Sell Ywar village	RMBH: biv 613/1	OL597631	n/a	n/a	24.2123	96.0819
<i>Y. nesemanni</i> (Konopleva, Vikhrev & Bolotov, 2017)	Myanmar: Ayeyarwady Basin, Indaw River near Sell Ywar village	RMBH: biv 613/2	OL597632	n/a	n/a	24.2123	96.0819
<i>Y. nesemanni</i> (Konopleva, Vikhrev & Bolotov, 2017)	Myanmar: Ayeyarwady Basin, Indaw River near Sell Ywar village	RMBH: biv 613/3	OL597633	n/a	n/a	24.2123	96.0819
<i>Y. nesemanni</i> (Konopleva, Vikhrev & Bolotov, 2017)	Myanmar: Haungthayaw River	RMBH: biv 1022/3	OL597634	n/a	n/a	15.9620	98.4152
<i>Y. panhai</i> (Konopleva, Bolotov et Kondakov, 2017)	Myanmar: Sittaung Basin, Kyan Hone River	RMBH: biv 138/4	KX865909	KX865666	KX865780	19.5099	96.8226
<i>Y. panhai</i> (Konopleva, Bolotov et Kondakov, 2017)	Myanmar: Sittaung Basin, Kyan Hone River	RMBH: biv 138/7	KX865910	KX865667	KX865781	19.5099	96.8226
<i>Y. panhai</i> (Konopleva, Bolotov et Kondakov, 2017)	Myanmar: Sittaung Basin, Kyan Hone River	RMBH: biv 138/12	KX865913	KX865670	KX865784	19.5099	96.8226
<i>Y. panhai</i> (Konopleva, Bolotov et Kondakov, 2017)	Myanmar: Sittaung Basin, Kyan Hone River	RMBH: biv 155/4	KX865911	KX865668	KX865782	19.5059	96.8280
<i>Y. panhai</i> (Konopleva, Bolotov et Kondakov, 2017)	Myanmar: Sittaung Basin, Kyan Hone River	RMBH: biv 155/11	KX865914	KX865671	KX865785	19.5059	96.8280



<i>Y. panhai</i> (Konopleva, Bolotov et Kondakov, 2017)	Myanmar: Sittaung Basin, Kyan Hone River	RMBH: biv 155/25	KX865912	KX865669	KX865783	19.5059	96.8280
<i>Y. inlenensis</i> Konopleva et al., 2019	Myanmar: Salween Basin, Inle Lake Channel	RMBH: biv 114/1	KX865915	KX865672	KX865786	20.4946	96.8772
<i>Y. inlenensis</i> Konopleva et al., 2019	Myanmar: Salween Basin, Inle Lake Channel	RMBH: biv 114/2	KX865918	KX865675	KX865789	20.4946	96.8772
<i>Y. inlenensis</i> Konopleva et al., 2019	Myanmar: Salween Basin, Inle Lake Channel	RMBH: biv 114/3	KX865916	KX865673	KX865787	20.4946	96.8772
<i>Y. inlenensis</i> Konopleva et al., 2019	Myanmar: Salween Basin, Inle Lake Channel	RMBH: biv 115/1	KX865919	n/a	KX865790	20.4705	96.8546
<i>Y. inlenensis</i> Konopleva et al., 2019	Myanmar: Salween Basin, Inle Lake Channel	RMBH: biv 115/2	KX865921	n/a	KX865792	20.4705	96.8546
<i>Y. inlenensis</i> Konopleva et al., 2019	Myanmar: Salween Basin, Inle Lake Channel	RMBH: biv 115/3	KX865920	n/a	KX865791	20.4705	96.8546
<i>Y. inlenensis</i> Konopleva et al., 2019	Myanmar: Salween Basin, Mway Stream	RMBH: biv 139/7	KX865922	KX865676	KX865793	19.7266	97.0992
<i>Y. inlenensis</i> Konopleva et al., 2019	Myanmar: Salween Basin, Mway Stream	RMBH: biv 139/15	KX865923	KX865677	KX865794	19.7266	97.0992
<i>Y. inlenensis</i> Konopleva et al., 2019	Myanmar: Salween Basin, Mway Stream	RMBH: biv 139/18	KX865924	KX865678	KX865795	19.7266	97.0992
<i>Y. inlenensis</i> Konopleva et al., 2019	Myanmar: Salween Basin, Nam Pilu River	RMBH: biv 140/22	KX865925	KX865679	KX865796	19.6746	97.1352
<i>Y. inlenensis</i> Konopleva et al., 2019	Myanmar: Salween Basin, Nam Pilu River	RMBH: biv 140/24	KX865926	KX865680	KX865797	19.6746	97.1352
<i>Y. inlenensis</i> Konopleva et al., 2019	Myanmar: Salween Basin, Nam Pilu River	RMBH: biv 140/25	KX865927	KX865681	KX865798	19.6746	97.1352
<i>Y. inlenensis</i> Konopleva et al., 2019	Myanmar: Salween Basin, Mway Stream	RMBH: biv 143/2	KX865917	KX865674	KX865788	19.7266	97.0992
<i>Y. paiensis</i> Konopleva et al., 2019	Thailand: Salween Basin, Khong River	ICH-00638	MH345970	MH346011	MH345991	19.4246	98.4013
<i>Y. paiensis</i> Konopleva et al., 2019	Thailand: Salween Basin, Khong River	ICH-00639	MH345971	MH346012	MH345992	19.4246	98.4013
<i>Y. paiensis</i> Konopleva et al., 2019	Thailand: Salween Basin, Khong River	ICH-00640	MH345972	n/a	n/a	19.4246	98.4013
<i>Y. avaensis</i> Bolotov et al., 2020	Myanmar: Ayeyarwady Basin, unnamed stream	RMBH: biv 680/1	MN275070	n/a	n/a	25.2758	97.2722
<i>Y. avaensis</i> Bolotov et al., 2020	Myanmar: Ayeyarwady Basin, unnamed stream	RMBH: biv 680/3	MN275071	MN307259	MN307200	25.2758	97.2722
<i>Y. avaensis</i> Bolotov et al., 2020	Myanmar: Ayeyarwady Basin, unnamed stream	RMBH: biv 680/5	MN275072	n/a	MN307201	25.2758	97.2722
<i>Y. rectangularis</i> (Tapparone-Canefri, 1889)	Myanmar: Ayeyarwady Basin, Nanyinhka Chaung River	RMBH: biv 111/2	KX865889	KX865656	KX865760	25.0815	96.2874
<i>Y. rectangularis</i> (Tapparone-Canefri, 1889)	Myanmar: Ayeyarwady Basin, Nanyinhka Chaung River	RMBH: biv 111/21	KX865890	KX865657	KX865761	25.0815	96.2874
<i>Y. rectangularis</i> (Tapparone-Canefri, 1889)	Myanmar: Ayeyarwady Basin, Nanyinhka Chaung River	RMBH: biv 111/43	KX865891	KX865658	KX865762	25.0815	96.2874
<i>Y. rectangularis</i> (Tapparone-Canefri, 1889)	Myanmar: Ayeyarwady Basin, Mali Hka Basin, Pan Khai Stream	RMBH: biv 101/4	KX865892	n/a	n/a	27.4493	97.3432
<i>Y. rectangularis</i> (Tapparone-Canefri, 1889)	Myanmar: Ayeyarwady Basin, Mali Hka Basin, Pan Khai Stream	RMBH: biv 101/5	KX865894	KX865659	KX865763	27.4493	97.3432
<i>Y. rectangularis</i> (Tapparone-Canefri, 1889)	Myanmar: Ayeyarwady Basin, Mali Hka Basin, Pan Khai Stream	RMBH: biv 101/6	KX865895	n/a	KX865764	27.4493	97.3432

<i>Y. rectangularis</i> (Tapparone-Canefri, 1889)	Myanmar: Ayeyarwady Basin, Mali Hka Basin, Nam Balak River	RMBH: biv 102/7	KX865899	KX865660	KX865768	27.4741	97.3493
<i>Y. rectangularis</i> (Tapparone-Canefri, 1889)	Myanmar: Ayeyarwady Basin, Mali Hka Basin, Nam Balak River	RMBH: biv 102/11	KX865900	KX865661	KX865769	27.4741	97.3493
<i>Y. rectangularis</i> (Tapparone-Canefri, 1889)	Myanmar: Ayeyarwady Basin, Mali Hka Basin, Nam Balak River	RMBH: biv 102/14	KX865901	KX865662	KX865770	27.4741	97.3493
<i>Y. rectangularis</i> (Tapparone-Canefri, 1889)	Myanmar: Ayeyarwady Basin, Mali Hka Basin, Mansakun River	RMBH: biv 103/17	KX865896	n/a	KX865765	27.4909	97.3351
<i>Y. rectangularis</i> (Tapparone-Canefri, 1889)	Myanmar: Ayeyarwady Basin, Mali Hka Basin, Mansakun River	RMBH: biv 103/18	KX865897	n/a	KX865766	27.4909	97.3351
<i>Y. rectangularis</i> (Tapparone-Canefri, 1889)	Myanmar: Ayeyarwady Basin, Mali Hka Basin, Mansakun River	RMBH: biv 103/19	KX865898	n/a	KX865767	27.4909	97.3351
<i>Y. rectangularis</i> (Tapparone-Canefri, 1889)	Myanmar: Ayeyarwady Basin, Mali Hka Basin, unnamed stream	RMBH: biv 104/34	KX865904	n/a	KX865773	27.5475	97.3705
<i>Y. rectangularis</i> (Tapparone-Canefri, 1889)	Myanmar: Ayeyarwady Basin, Mali Hka Basin, unnamed stream	RMBH: biv 104/35	KX865905	n/a	KX865774	27.5475	97.3705
<i>Y. rectangularis</i> (Tapparone-Canefri, 1889)	Myanmar: Ayeyarwady Basin, Mali Hka Basin, Nam Shu River	RMBH: biv 105/24	KX865893	n/a	n/a	27.5482	97.3700
<i>Y. rectangularis</i> (Tapparone-Canefri, 1889)	Myanmar: Ayeyarwady Basin, Mali Hka Basin, Nam Shu River	RMBH: biv 105/31	KX865902	n/a	KX865771	27.5482	97.3700
<i>Y. rectangularis</i> (Tapparone-Canefri, 1889)	Myanmar: Ayeyarwady Basin, Mali Hka Basin, Nam Shu River	RMBH: biv 105/32	KX865903	n/a	KX865772	27.5482	97.3700
<i>Y. rectangularis</i> (Tapparone-Canefri, 1889)	Myanmar: Ayeyarwady Basin, Mole Stream	RMBH: biv 916/1	OL597635	ON142664	OL598387	24.4010	97.2544
<i>Y. rectangularis</i> (Tapparone-Canefri, 1889)	Myanmar: Ayeyarwady Basin, Mole Stream	RMBH: biv 916/2	OL597636	ON142665	OL598388	24.4010	97.2544
<i>Y. rectangularis</i> (Tapparone-Canefri, 1889)	Myanmar: Ayeyarwady Basin, Mole Stream	RMBH: biv 916/3	OL597637	n/a	n/a	24.4010	97.2544
<i>Y. rectangularis</i> (Tapparone-Canefri, 1889)	Myanmar: Ayeyarwady Basin, Mole Stream	RMBH: biv 917/1	OL597638	ON142666	OL598389	24.4010	97.2544
<i>Y. rectangularis</i> (Tapparone-Canefri, 1889)	Myanmar: Ayeyarwady Basin, Indaw River	RMBH: biv 937/1	OL597639	n/a	n/a	25.5274	96.7189
<i>Y. rectangularis</i> (Tapparone-Canefri, 1889)	Myanmar: Ayeyarwady Basin, Indaw River	RMBH: biv 937/2	OL597640	n/a	n/a	25.5274	96.7189
<i>Y. rectangularis</i> (Tapparone-Canefri, 1889)	Myanmar: Ayeyarwady Basin, Indaw River	RMBH: biv 937/3	OL597641	n/a	n/a	25.5274	96.7189
<i>Y. rectangularis</i> (Tapparone-Canefri, 1889)	Myanmar: Ayeyarwady Basin, Mogaung River	RMBH: biv 961/1	OL597642	n/a	n/a	25.3151	96.9326
<i>Y. rectangularis</i> (Tapparone-Canefri, 1889)	Myanmar: Ayeyarwady Basin, Mogaung River	RMBH: biv 961/2	OL597643	n/a	n/a	25.3151	96.9326
<i>Y. rectangularis</i> (Tapparone-Canefri, 1889)	Myanmar: Ayeyarwady Basin, Mogaung River	RMBH: biv 961/3	OL597644	n/a	n/a	25.3151	96.9326
<i>Y. rectangularis</i> (Tapparone-Canefri, 1889)	Myanmar: Ayeyarwady Basin, Mogaung River	RMBH: biv 964/1	OL597645	n/a	n/a	25.3151	96.9326

<i>Y. rectangularis</i> (Tapparone-Canefri, 1889)	Myanmar: Ayeyarwady Basin, Mogaung River	RMBH: biv 964/2	OL597646	n/a	n/a	25.3151	96.9326
<i>Y. rectangularis</i> (Tapparone-Canefri, 1889)	Myanmar: Ayeyarwady Basin, Mogaung River	RMBH: biv 964/3	OL597647	n/a	n/a	25.3151	96.9326
<i>Y. rectangularis</i> (Tapparone-Canefri, 1889)	Myanmar: Ayeyarwady Basin, Nantyin Stream	RMBH: biv 974/1	OL597648	n/a	n/a	25.0271	96.6183
<i>Y. rectangularis</i> (Tapparone-Canefri, 1889)	Myanmar: Ayeyarwady Basin, Nantyin Stream	RMBH: biv 974/2	OL597649	n/a	n/a	25.0271	96.6183
<i>Y. rectangularis</i> (Tapparone-Canefri, 1889)	Myanmar: Ayeyarwady Basin, Nantyin Stream	RMBH: biv 974/3	OL597650	n/a	n/a	25.0271	96.6183
<i>Y. rectangularis</i> (Tapparone-Canefri, 1889)	Myanmar: Ayeyarwady Basin, Nantyin Stream	RMBH: biv 976/1	OL597651	n/a	OL598390	25.0271	96.6183
<i>Y. rectangularis</i> (Tapparone-Canefri, 1889)	Myanmar: Ayeyarwady Basin, Nantyin Stream	RMBH: biv 976/2	OL597652	n/a	OL598391	25.0271	96.6183
<i>Y. rectangularis</i> (Tapparone-Canefri, 1889)	Myanmar: Ayeyarwady Basin, Nantyin Stream	RMBH: biv 976/3	OL597653	n/a	OL598392	25.0271	96.6183
<i>Y. zayleymanensis</i> (Preston, 1912)	Myanmar: Ayeyarwady River near Mandalay	RMBH: biv 448/1	OL597654	n/a	OL598393	21.8893	95.9978
<i>Y. zayleymanensis</i> (Preston, 1912)	Myanmar: Ayeyarwady River near Mandalay	RMBH: biv 448/2	OL597655	n/a	n/a	21.8893	95.9978
<i>Y. zayleymanensis</i> (Preston, 1912)	Myanmar: Ayeyarwady Basin, Bani River	RMBH: biv 665/1	MN275073	MN307260	MN307202	19.3247	94.9839
<i>Y. zayleymanensis</i> (Preston, 1912)	Myanmar: Ayeyarwady Basin, Bani River	RMBH: biv 665/3	OL597656	n/a	n/a	19.3247	94.9839
<i>Y. zayleymanensis</i> (Preston, 1912)	Myanmar: Ayeyarwady Basin, Bani River	RMBH: biv 666/6	OL597657	n/a	n/a	19.3247	94.9839
<i>Y. zayleymanensis</i> (Preston, 1912)	Myanmar: Ayeyarwady Basin, "small stream"	RMBH: biv 679/1	MN275074	MN307261	MN307203	25.2758	97.2722
<i>Y. zayleymanensis</i> (Preston, 1912)	Myanmar: Ayeyarwady Basin, "small stream"	RMBH: biv 679/2	MN275075	MN307262	MN307204	25.2758	97.2722
<i>Y. zayleymanensis</i> (Preston, 1912)	Myanmar: Ayeyarwady Basin, "small stream"	RMBH: biv 679/3	OL597658	n/a	n/a	25.2758	97.2722
<i>Y. zayleymanensis</i> (Preston, 1912)	Myanmar: Ayeyarwady Basin, Lamon Chaung Stream	RMBH: biv 899/1	OL597659	n/a	n/a	26.3463	96.6685
<i>Y. zayleymanensis</i> (Preston, 1912)	Myanmar: Ayeyarwady Basin, Lamon Chaung Stream	RMBH: biv 899/2	OL597660	n/a	n/a	26.3463	96.6685
<i>Y. zayleymanensis</i> (Preston, 1912)	Myanmar: Ayeyarwady Basin, Mole Stream	RMBH: biv 917/2	OL597661	n/a	n/a	24.4010	97.2544
<i>Y. zayleymanensis</i> (Preston, 1912)	Myanmar: Ayeyarwady Basin, Mole Stream	RMBH: biv 917/3	OL597662	n/a	n/a	24.4010	97.2544
<i>Y. zayleymanensis</i> (Preston, 1912)	Myanmar: Ayeyarwady Basin, Mole Stream	RMBH: biv 918/1	OL597663	n/a	n/a	24.4010	97.2544
<i>Y. zayleymanensis</i> (Preston, 1912)	Myanmar: Ayeyarwady Basin, Mole Stream	RMBH: biv 918/2	OL597664	n/a	n/a	24.4010	97.2544
<i>Y. zayleymanensis</i> (Preston, 1912)	Myanmar: Ayeyarwady Basin, Mole Stream	RMBH: biv 918/3	OL597665	n/a	n/a	24.4010	97.2544
<i>Y. zayleymanensis</i> (Preston, 1912)	Myanmar: Ayeyarwady Basin, Mogaung River	RMBH: biv 963/1	OL597666	n/a	n/a	25.3151	96.9326
<i>Y. zayleymanensis</i> (Preston, 1912)	Myanmar: Ayeyarwady Basin, Mogaung River	RMBH: biv 963/2	OL597667	n/a	n/a	25.3151	96.9326

<i>Y. zayleymanensis</i> (Preston, 1912)	Myanmar: Ayeyarwady Basin, Mogaung River	RMBH: biv 963/3	OL597668	n/a	n/a	25.3151	96.9326
<i>Y. elongatula</i> Bolotov et al., 2019	Myanmar: Ayeyarwady Basin, Chindwin River	RMBH: biv 346/1	MK372406	MK372454	MK372484	23.1918	94.3217
<i>Y. elongatula</i> Bolotov et al., 2019	Myanmar: Ayeyarwady Basin, Chindwin River	RMBH: biv 346/2	MK372407	MK372455	MK372485	23.1918	94.3217
<i>Y. elongatula</i> Bolotov et al., 2019	Myanmar: Ayeyarwady Basin, Chindwin River	RMBH: biv 346/3	MK372408	MK372456	MK372486	23.1918	94.3217
<i>Y. elongatula</i> Bolotov et al., 2019	Myanmar: Ayeyarwady Basin, Myit Tha (Manipur) River	RMBH: biv 344/1	MK372402	n/a	n/a	23.2006	94.2214
<i>Y. elongatula</i> Bolotov et al., 2019	Myanmar: Ayeyarwady Basin, Myit Tha (Manipur) River	RMBH: biv 344/3	MK372403	n/a	n/a	23.2006	94.2214
<i>Y. elongatula</i> Bolotov et al., 2019	Myanmar: Ayeyarwady Basin, Myit Tha (Manipur) River	RMBH: biv 341/2	MK372400	MK372451	MK372480	23.2448	94.1662
<i>Y. elongatula</i> Bolotov et al., 2019	Myanmar: Ayeyarwady Basin, Myit Tha (Manipur) River	RMBH: biv 341/3	MK372401	n/a	MK372481	23.2448	94.1662
<i>Y. elongatula</i> Bolotov et al., 2019	Myanmar: Ayeyarwady Basin, Myit Tha (Manipur) River	RMBH: biv 339/1	MK372397	n/a	MK372478	23.2285	94.1434
<i>Y. elongatula</i> Bolotov et al., 2019	Myanmar: Ayeyarwady Basin, Myit Tha (Manipur) River	RMBH: biv 339/2	MK372398	n/a	MK372479	23.2285	94.1434
<i>Y. elongatula</i> Bolotov et al., 2019	Myanmar: Ayeyarwady Basin, Myit Tha (Manipur) River	RMBH: biv 339/3	MK372399	n/a	n/a	23.2285	94.1434
<i>Y. baniensis</i> (Bolotov et al., 2020)	Myanmar: Ayeyarwady Basin, Bani River	RMBH: biv 666/1	MN275076	MN307263	MN307205	19.3247	94.9839
<i>Y. baniensis</i> (Bolotov et al., 2020)	Myanmar: Ayeyarwady Basin, Bani River	RMBH: biv 666/2	MN275077	MN307264	MN307206	19.3247	94.9839
<i>Y. baniensis</i> (Bolotov et al., 2020)	Myanmar: Ayeyarwady Basin, Bani River	RMBH: biv 666/3	MN275078	MN307265	MN307207	19.3247	94.9839
<i>Y. dalliana</i> (Frierson, 1913)	Myanmar: Ayeyarwady Basin, Lashio River	RMBH: biv 982/1	OL741730	OL763823	OL763821	22.9965	97.8535
<i>Y. dalliana</i> (Frierson, 1913)	Myanmar: Ayeyarwady Basin, Lashio River	RMBH: biv 982/2	OL741731	OL763824	OL763822	22.9965	97.8535
<i>Y. dalliana</i> (Frierson, 1913)	Myanmar: Ayeyarwady Basin, Lashio River	RMBH: biv 982/3	OL741732	n/a	n/a	22.9965	97.8535
<b>PARREYSIINAE Henderson, 1935</b>							
<b>Indochinellini Bolotov et al., 2018</b>							
<b>Indochinella Bolotov, Pfeiffer, Vikhrev, &amp; Konopleva in Bolotov et al., 2018</b>							
<i>Indochinella pugio pugio</i> (Benson, 1862)	Myanmar: Ayeyarwady Basin, Lake Nant Phar	RMBH: biv 258/1	MF352261	MF352325	MF352386	24.2972	97.2610
<i>I. pugio pugio</i> (Benson, 1862)	Myanmar: Ayeyarwady Basin, Lake Nant Phar	RMBH: biv 258/2	MF352262	MF352326	MF352389	24.2972	97.2610
<i>I. pugio pugio</i> (Benson, 1862)	Myanmar: Ayeyarwady Basin, Lake Myaung	RMBH: biv 268/1	MF352285	n/a	n/a	24.2387	97.1658
<i>I. pugio pugio</i> (Benson, 1862)	Myanmar: Ayeyarwady Basin, Lake Myaung	RMBH: biv 268/2	MF352286	MF352346	MF352403	24.2387	97.1658
<i>I. pugio pugio</i> (Benson, 1862)	Myanmar: Ayeyarwady Basin, Lake Myaung	RMBH: biv 268/4	MF352287	MF352347	MF352404	24.2387	97.1658

<i>I. pugio pugio</i> (Benson, 1862)	Myanmar: Ayeyarwady Basin, Chindwin River, Pauk In Lake	UA 20739	JN243899	KP795046	JN243879	n/a	n/a
<i>I. pugio viridissima</i> Bolotov et al., 2019	Myanmar: Sittaung Basin, Myit Kyi Pauk Stream	RMBH: biv 251/1	MF352242	MF352312	MF352370	18.9613	96.4455
<i>I. pugio viridissima</i> Bolotov et al., 2019	Myanmar: Sittaung Basin, Myit Kyi Pauk Stream	RMBH: biv 251/2	MF352243	MF352313	MF352371	18.9613	96.4455
<i>I. pugio viridissima</i> Bolotov et al., 2019	Myanmar: Sittaung Basin, Myit Kyi Pauk Stream	RMBH: biv 251/3	MF352244	MF352314	MF352372	18.9613	96.4455
<i>I. pugio viridissima</i> Bolotov et al., 2019	Myanmar: Bilin River	RMBH: biv 371/1	MK372426	MK372468	MK372500	17.3306	97.2418
<i>I. pugio viridissima</i> Bolotov et al., 2019	Myanmar: Bilin River	RMBH: biv 371/2	MK372427	MK372469	MK372501	17.3306	97.2418
<i>I. pugio viridissima</i> Bolotov et al., 2019	Myanmar: Bilin River	RMBH: biv 371/3	MK372428	n/a	n/a	17.3306	97.2418
<i>I. pugio viridissima</i> Bolotov et al., 2019	Myanmar: Bilin River	RMBH: biv 375/1	MK372429	n/a	n/a	17.2757	97.1274
<i>I. pugio viridissima</i> Bolotov et al., 2019	Myanmar: Bilin River	RMBH: biv 375/2	MK372430	n/a	n/a	17.2757	97.1274
<i>I. pugio viridissima</i> Bolotov et al., 2019	Myanmar: Bilin River	RMBH: biv 375/3	MK372431	n/a	n/a	17.2757	97.1274
<i>I. pugio viridissima</i> Bolotov et al., 2019	Myanmar: Bilin River	RMBH: biv 377/2	MK372432	n/a	n/a	17.5968	96.5950
<i>I. pugio viridissima</i> Bolotov et al., 2019	Myanmar: Bilin River	RMBH: biv 377/3	MK372433	n/a	n/a	17.5968	96.5950
<i>I. pugio viridissima</i> Bolotov et al., 2019	Myanmar: Bago River	RMBH: biv 381/3	MK372434	n/a	n/a	17.5334	96.3315
<i>I. pugio viridissima</i> Bolotov et al., 2019	Myanmar: Bago River	RMBH: biv 381/4	MK372435	n/a	n/a	17.5334	96.3315
<i>I. pugio daweiensis</i> Bolotov et al., 2019	Myanmar: Dawei River	RMBH: biv 147/3	KX865852	KX865623	KX865724	14.5013	98.1558
<i>I. pugio daweiensis</i> Bolotov et al., 2019	Myanmar: Dawei River	RMBH: biv 147/10	KX865853	KX865624	KX865725	14.5013	98.1558
<i>I. pugio daweiensis</i> Bolotov et al., 2019	Myanmar: Dawei River	RMBH: biv 147/18	KX865854	KX865625	KX865726	14.5013	98.1558
<i>I. pugio daweiensis</i> Bolotov et al., 2019	Myanmar: Dawei River	RMBH: biv 147/30	MK372395	n/a	n/a	14.5013	98.1558
<i>I. pugio daweiensis</i> Bolotov et al., 2019	Myanmar: Dawei River	RMBH: biv 148/4	KX865855	KX865626	KX865727	14.5013	98.1558
<i>I. pugio daweiensis</i> Bolotov et al., 2019	Myanmar: Dawei River	RMBH: biv 148/7	KX865856	KX865627	KX865728	14.5013	98.1558
<i>I. pugio daweiensis</i> Bolotov et al., 2019	Myanmar: Dawei River	RMBH: biv 148/15	KX865857	KX865628	KX865729	14.5013	98.1558
<i>I. pugio paradoxa</i> Bolotov et al., 2019	Myanmar: Haungthayaw River upStream of Kawkareik town	RMBH: biv 361/1	MK372420	MK372465	MK372496	16.4714	98.2183
<i>I. pugio paradoxa</i> Bolotov et al., 2019	Myanmar: Haungthayaw River upStream of Kawkareik town	RMBH: biv 361/2	MK372421	MK372466	MK372497	16.4714	98.2183
<i>I. pugio paradoxa</i> Bolotov et al., 2019	Myanmar: Haungthayaw River upStream of Kawkareik town	RMBH: biv 361/3	MK372422	MK372467	MK372498	16.4714	98.2183
<b>Indonaia Prashad, 1918</b>							
<i>Indonaia caerulea</i> (Lea, 1831)	India: Krishna Basin, fish pond	RRc1	KT869141	n/a	n/a	n/a	n/a
<i>I. aff. khadakvaslaensis</i> (Ray, 1966)	India	SBM7	KF690124	n/a	n/a	n/a	n/a
<i>I. aff. khadakvaslaensis</i> (Ray, 1966)	India	SBM19	KF690122	n/a	n/a	n/a	n/a
<i>I. aff. khadakvaslaensis</i> (Ray, 1966)	India	SBM23	KF690123	n/a	n/a	n/a	n/a
<i>I. lima</i> (Simpson, 1900)	India: Krishna River, Nagarjuna Sagar	RR11	KP268827	n/a	n/a	n/a	n/a
<i>I. andersoniana</i> (Nevill, 1877)	Myanmar: Ayeyarwady Basin, Lake Indawgyi	RMBH: biv 108/1	KX865835	KX865606	KX865709	25.1099	96.2925
<i>I. andersoniana</i> (Nevill, 1877)	Myanmar: Ayeyarwady Basin, Lake Indawgyi	RMBH: biv 108/2	KX865836	KX865607	n/a	25.1099	96.2925

<i>I. andersoniana</i> (Nevill, 1877)	Myanmar: Ayeyarwady Basin, Lake Indawgyi	RMBH: biv 108/3	KX865837	KX865608	n/a	25.1099	96.2925
<i>I. andersoniana</i> (Nevill, 1877)	Myanmar: Ayeyarwady Basin, Lake Nant Phar	RMBH: biv 259/1	MF352263	MF352327	MF352387	24.2972	97.2610
<i>I. andersoniana</i> (Nevill, 1877)	Myanmar: Ayeyarwady Basin, Lake Nant Phar	RMBH: biv 259/3	MF352264	MF352328	n/a	24.2972	97.2610
<i>I. andersoniana</i> (Nevill, 1877)	Myanmar: Ayeyarwady Basin, Lake Nant Phar	RMBH: biv 259/4	MF352265	MF352329	MF352388	24.2972	97.2610
<i>I. andersoniana</i> (Nevill, 1877)	Myanmar: Ayeyarwady Basin, Lake Nant Phar	RMBH: biv 263/1	MF352275	MF352337	MF352397	24.2196	97.2224
<i>I. andersoniana</i> (Nevill, 1877)	Myanmar: Ayeyarwady Basin, Nant Sa Yi River	RMBH: biv 263/2	MF352276	MF352338	n/a	24.2196	97.2224
<i>I. andersoniana</i> (Nevill, 1877)	Myanmar: Ayeyarwady Basin, Lake Myaung	RMBH: biv 267/1	MF352283	MF352341	n/a	24.2387	97.1658
<i>I. andersoniana</i> (Nevill, 1877)	Myanmar: Ayeyarwady Basin, Lake Myaung	RMBH: biv 267/3	MF352284	MF352342	n/a	24.2387	97.1658
<i>I. andersoniana</i> (Nevill, 1877)	Myanmar: Salween Basin, Mizan Stream	RMBH: biv 368/1	OL597669	OL598373	OL598394	16.9770	97.6330
<i>I. andersoniana</i> (Nevill, 1877)	Myanmar: Salween Basin, Mizan Stream	RMBH: biv 368/2	OL597670	n/a	n/a	16.9770	97.6330
<i>I. andersoniana</i> (Nevill, 1877)	Myanmar: Salween Basin, Mizan Stream	RMBH: biv 368/3	OL597671	n/a	n/a	16.9770	97.6330
<i>I. andersoniana</i> (Nevill, 1877)	Myanmar: Bago River	RMBH: biv 383/1	OL597672	n/a	n/a	17.5334	96.3315
<i>I. andersoniana</i> (Nevill, 1877)	Myanmar: Bago River	RMBH: biv 383/2	OL597673	n/a	n/a	17.5334	96.3315
<i>I. andersoniana</i> (Nevill, 1877)	Myanmar: Bago River	RMBH: biv 383/3	OL597674	n/a	n/a	17.5334	96.3315
<i>I. andersoniana</i> (Nevill, 1877)	Myanmar: Bago River	RMBH: biv 389/1	OL597675	n/a	n/a	17.6795	96.2347
<i>I. andersoniana</i> (Nevill, 1877)	Myanmar: Bago River	RMBH: biv 389/2	OL597676	n/a	n/a	17.6795	96.2347
<i>I. andersoniana</i> (Nevill, 1877)	Myanmar: Bago River	RMBH: biv 389/3	OL597677	n/a	n/a	17.6795	96.2347
<i>I. andersoniana</i> (Nevill, 1877)	Myanmar: Salween Basin, Balu River near Loikaw	RMBH: biv 405A/1	OL597678	n/a	n/a	19.6682	97.1848
<i>I. andersoniana</i> (Nevill, 1877)	Myanmar: Salween Basin, Balu River near Loikaw	RMBH: biv 405A/2	OL597679	n/a	n/a	19.6682	97.1848
<i>I. andersoniana</i> (Nevill, 1877)	Myanmar: Salween Basin, Balu River near Loikaw	RMBH: biv 405A/3	OL597680	n/a	n/a	19.6682	97.1848
<i>I. andersoniana</i> (Nevill, 1877)	Myanmar: Sittaung Basin, Hnit Saung Pyang Stream	RMBH: biv 407/1	OL597681	n/a	n/a	19.5140	96.2621
<i>I. andersoniana</i> (Nevill, 1877)	Myanmar: Sittaung Basin, Hnit Saung Pyang Stream	RMBH: biv 407/2	OL597682	n/a	n/a	19.5140	96.2621
<i>I. andersoniana</i> (Nevill, 1877)	Myanmar: Sittaung Basin, Hnit Saung Pyang Stream	RMBH: biv 407/3	OL597683	n/a	n/a	19.5140	96.2621
<i>I. andersoniana</i> (Nevill, 1877)	Myanmar: Salween Basin, Balu River near Loikaw	RMBH: biv 407A/1	OL597684	n/a	n/a	19.6682	97.1848
<i>I. andersoniana</i> (Nevill, 1877)	Myanmar: Salween Basin, Balu River near Loikaw	RMBH: biv 407A/2	OL597685	n/a	n/a	19.6682	97.1848
<i>I. andersoniana</i> (Nevill, 1877)	Myanmar: Sittaung Basin, Sin Thay Stream	RMBH: biv 412/1	OL597686	n/a	n/a	20.1533	96.1267
<i>I. andersoniana</i> (Nevill, 1877)	Myanmar: Sittaung Basin, Sin Thay Stream	RMBH: biv 412/2	OL597687	n/a	n/a	20.1533	96.1267
<i>I. andersoniana</i> (Nevill, 1877)	Myanmar: Sittaung Basin, Sin Thay Stream	RMBH: biv 412/3	OL597688	n/a	n/a	20.1533	96.1267

<i>I. andersoniana</i> (Nevill, 1877)	Myanmar: Ayeyarwady Basin, Mone Ding Dam outlet	RMBH: biv 414/1	OL597689	n/a	n/a	20.8099	95.7242
<i>I. andersoniana</i> (Nevill, 1877)	Myanmar: Ayeyarwady Basin, Mone Ding Dam outlet	RMBH: biv 414/2	OL597690	n/a	n/a	20.8099	95.7242
<i>I. andersoniana</i> (Nevill, 1877)	Myanmar: Ayeyarwady Basin, Mone Ding Dam outlet	RMBH: biv 414/3	OL597691	n/a	n/a	20.8099	95.7242
<i>I. andersoniana</i> (Nevill, 1877)	Myanmar: Ayeyarwady Basin, ox-bow lake near Ta Naung Taig village	RMBH: biv 429/1	OL597692	n/a	n/a	21.4064	95.3399
<i>I. andersoniana</i> (Nevill, 1877)	Myanmar: Ayeyarwady Basin, ox-bow lake near Ta Naung Taig village	RMBH: biv 429/2	OL597693	n/a	n/a	21.4064	95.3399
<i>I. andersoniana</i> (Nevill, 1877)	Myanmar: Ayeyarwady Basin, ox-bow lake near Ta Naung Taig village	RMBH: biv 429/3	OL597694	n/a	n/a	21.4064	95.3399
<i>I. andersoniana</i> (Nevill, 1877)	Myanmar: Ayeyarwady River near Mandalay	RMBH: biv 434	OL597695	n/a	n/a	21.9574	96.0510
<i>I. andersoniana</i> (Nevill, 1877)	Myanmar: Ayeyarwady River near Mandalay	RMBH: biv 450/1	OL597696	n/a	n/a	21.8893	95.9978
<i>I. andersoniana</i> (Nevill, 1877)	Myanmar: Ayeyarwady River near Mandalay	RMBH: biv 450/2	OL597697	n/a	n/a	21.8893	95.9978
<i>I. andersoniana</i> (Nevill, 1877)	Myanmar: Ayeyarwady Basin, Indaw River near Sell Ywar village	RMBH: biv 615/1	OL597698	n/a	n/a	24.2123	96.0819
<i>I. andersoniana</i> (Nevill, 1877)	Myanmar: Ayeyarwady Basin, Indaw River near Sell Ywar village	RMBH: biv 615/2	OL597699	n/a	n/a	24.2123	96.0819
<i>I. andersoniana</i> (Nevill, 1877)	Myanmar: Bago River	RMBH: biv 1005/1	OL597700	ON142667	n/a	18.0791	96.0449
<i>I. andersoniana</i> (Nevill, 1877)	Myanmar: Bago River	RMBH: biv 1005/2	OL597701	ON142668	n/a	18.0791	96.0449
<i>I. andersoniana</i> (Nevill, 1877)	Myanmar: Bago River	RMBH: biv 1005/3	OL597702	ON142669	n/a	18.0791	96.0449
<i>I. subclathrata</i> (Martens, 1899)	Myanmar: Ayeyarwady Basin, Myit Tha (Manipur) River	RMBH: biv 338/1	MH700479	n/a	n/a	23.2285	94.1434
<i>I. subclathrata</i> (Martens, 1899)	Myanmar: Ayeyarwady Basin, Myit Tha (Manipur) River	RMBH: biv 338/2	OL597703	n/a	n/a	23.2285	94.1434
<i>I. subclathrata</i> (Martens, 1899)	Myanmar: Ayeyarwady Basin, Myit Tha (Manipur) River	RMBH: biv 338/3	OL597704	n/a	n/a	23.2285	94.1434
<i>I. subclathrata</i> (Martens, 1899)	Myanmar: Ayeyarwady Basin, Chindwin River	RMBH: biv 347/1	MH700480	MN307266	MH697870	23.1918	94.3217
<i>I. subclathrata</i> (Martens, 1899)	Myanmar: Ayeyarwady Basin, Chindwin River	RMBH: biv 347/2	MN275079	n/a	MN307208	23.1918	94.3217
<i>I. subclathrata</i> (Martens, 1899)	Myanmar: Bani River	RMBH: biv 667/1	MN275080	n/a	n/a	19.3247	94.9839
<i>I. subclathrata</i> (Martens, 1899)	Myanmar: Bani River	RMBH: biv 667/2	OL597705	n/a	n/a	19.3247	94.9839
<b><i>Radiatula</i> Simpson, 1900</b>							
<i>Radiatula mouhoti</i> Vikhrev, Bolotov & Konopleva, 2017	Myanmar: Sittaung River near Taungoo	RMBH: biv 248/1	MF352234	MF352305	MF352363	18.9840	96.4361
<i>R. mouhoti</i> Vikhrev, Bolotov & Konopleva, 2017	Myanmar: Sittaung River near Taungoo	RMBH: biv 248/3	MF352235	n/a	n/a	18.9840	96.4361



<i>R. mouhoti</i> Vikhrev, Bolotov & Konopleva, 2017	Myanmar: Sittaung River near Taungoo	RMBH: biv 248/4	MF352236	MF352306	MF352364	18.9840	96.4361
<i>R. mouhoti</i> Vikhrev, Bolotov & Konopleva, 2017	Myanmar: Sittaung River near Taungoo	RMBH: biv 253/1	MF352248	MF352317	MF352375	18.9840	96.4361
<i>R. mouhoti</i> Vikhrev, Bolotov & Konopleva, 2017	Myanmar: Sittaung River near Taungoo	RMBH: biv 253/6	MF352249	MF352318	MF352376	18.9840	96.4361
<i>R. mouhoti</i> Vikhrev, Bolotov & Konopleva, 2017	Myanmar: Sittaung River near Taungoo	RMBH: biv 256	MF352257	MF352321	MF352382	18.9840	96.4361
<i>R. mouhoti</i> Vikhrev, Bolotov & Konopleva, 2017	Myanmar: Sittaung River near Kanna village	RMBH: biv 409/2	OL597706	n/a	n/a	19.4857	96.2750
<i>R. mouhoti</i> Vikhrev, Bolotov & Konopleva, 2017	Myanmar: Sittaung River near Kanna village	RMBH: biv 409/3	OL597707	n/a	n/a	19.4857	96.2750
<i>R. mouhoti</i> Vikhrev, Bolotov & Konopleva, 2017	Myanmar: Sittaung River near Swanka Doe Seik village	RMBH: biv 410/1	OL597708	n/a	n/a	19.2830	96.3107
<i>R. mouhoti</i> Vikhrev, Bolotov & Konopleva, 2017	Myanmar: Sittaung River near Swanka Doe Seik village	RMBH: biv 410/2	OL597709	n/a	n/a	19.2830	96.3107
<i>R. mouhoti</i> Vikhrev, Bolotov & Konopleva, 2017	Myanmar: Sittaung River near Swanka Doe Seik village	RMBH: biv 410/3	OL597710	n/a	n/a	19.2830	96.3107
<i>R. mouhoti</i> Vikhrev, Bolotov & Konopleva, 2017	Myanmar: Sittaung Basin, Thaing Stream	RMBH: biv 411/1	OL597711	n/a	n/a	19.2187	96.2229
<i>R. mouhoti</i> Vikhrev, Bolotov & Konopleva, 2017	Myanmar: Sittaung Basin, Thaing Stream	RMBH: biv 411/2	OL597712	n/a	n/a	19.2187	96.2229
<i>R. mouhoti haungthayawensis</i> Bolotov et al., 2019	Myanmar: Haungthayaw River upstream of Kawkareik town	RMBH: biv 360/1	MK372417	MK372463	MK372493	16.4714	98.2183
<i>R. mouhoti haungthayawensis</i> Bolotov et al., 2019	Myanmar: Haungthayaw River upstream of Kawkareik town	RMBH: biv 360/2	MK372418	MK372464	MK372494	16.4714	98.2183
<i>R. mouhoti haungthayawensis</i> Bolotov et al., 2019	Myanmar: Haungthayaw River upstream of Kawkareik town	RMBH: biv 360/3	MK372419	n/a	MK372495	16.4714	98.2183
<i>R. mouhoti haungthayawensis</i> Bolotov et al., 2019	Myanmar: Haungthayaw Basin, Miton Stream	RMBH: biv 1023/1	OL597713	n/a	n/a	16.0019	98.4064
<i>R. mouhoti haungthayawensis</i> Bolotov et al., 2019	Myanmar: Haungthayaw Basin, Miton Stream	RMBH: biv 1023/2	OL597714	OL598374	n/a	16.0019	98.4064
<i>R. mouhoti haungthayawensis</i> Bolotov et al., 2019	Myanmar: Haungthayaw Basin, Miton Stream	RMBH: biv 1023/3	OL597715	n/a	n/a	16.0019	98.4064
<i>R. chaudhurii</i> (Preston, 1912)	Myanmar: Ayeyarwady Basin, Tar Pein River	RMBH: biv 260/5	MF352266	MF352330	MF352390	24.3049	97.2514
<i>R. chaudhurii</i> (Preston, 1912)	Myanmar: Ayeyarwady Basin, Tar Pein River	RMBH: biv 260/9	MF352267	MF352331	MF352391	24.3049	97.2514
<i>R. chaudhurii</i> (Preston, 1912)	Myanmar: Ayeyarwady Basin, Tar Pein River	RMBH: biv 260/10	MF352268	MF352332	MF352392	24.3049	97.2514
<i>R. chaudhurii</i> (Preston, 1912)	Myanmar: Ayeyarwady Basin, midstream near Thin Baw Kone village	RMBH: biv 421/2	MK372439	MK372471	MK372503	21.3145	95.0589
<i>R. chaudhurii</i> (Preston, 1912)	Myanmar: Ayeyarwady Basin, midstream near Thin Baw Kone village	RMBH: biv 421/3	MK372440	MK372472	MK372504	21.3145	95.0589
<i>R. chaudhurii</i> (Preston, 1912)	Myanmar: Ayeyarwady Basin, midstream near Thin Baw Kone village	RMBH: biv 427/1	MK372444	n/a	n/a	21.2566	94.9848

<i>R. chaudhurii</i> (Preston, 1912)	Myanmar: Ayeyarwady Basin, midstream near Thin Baw Kone village	RMBH: biv 427/2	MK372445	n/a	n/a	21.2566	94.9848
<i>R. chaudhurii</i> (Preston, 1912)	Myanmar: Ayeyarwady Basin, Lake Indaw	RMBH: biv 604/1	OL597716	n/a	n/a	24.2665	96.1228
<i>R. chaudhurii</i> (Preston, 1912)	Myanmar: Ayeyarwady Basin, Lake Indaw	RMBH: biv 604/2	OL597717	n/a	n/a	24.2665	96.1228
<i>R. chaudhurii</i> (Preston, 1912)	Myanmar: Ayeyarwady Basin, Lake Indaw	RMBH: biv 605/1	OL597718	n/a	n/a	24.2665	96.1228
<i>R. chaudhurii</i> (Preston, 1912)	Myanmar: Ayeyarwady Basin, Lake Indaw	RMBH: biv 605/2	OL597719	n/a	n/a	24.2665	96.1228
<i>R. chaudhurii</i> (Preston, 1912)	Myanmar: Ayeyarwady Basin, Lake Indaw	RMBH: biv 605/3	OL597720	n/a	n/a	24.2665	96.1228
<i>R. chaudhurii</i> (Preston, 1912)	Myanmar: Ayeyarwady Basin, Lake Indaw	RMBH: biv 606/2	OL597721	n/a	n/a	24.2665	96.1228
<i>R. chaudhurii</i> (Preston, 1912)	Myanmar: Ayeyarwady Basin, Nant Poat Kalay River	RMBH: biv 610/1	OL597722	n/a	n/a	24.2130	96.1089
<i>R. chaudhurii</i> (Preston, 1912)	Myanmar: Ayeyarwady Basin, Nant Poat Kalay River	RMBH: biv 610/2	OL597723	n/a	n/a	24.2130	96.1089
<i>R. chaudhurii</i> (Preston, 1912)	Myanmar: Ayeyarwady Basin, Nant Poat Kalay River	RMBH: biv 611/1	OL597724	n/a	n/a	24.2130	96.1089
<i>R. chaudhurii</i> (Preston, 1912)	Myanmar: Ayeyarwady Basin, Nant Poat Kalay River	RMBH: biv 611/2	OL597725	n/a	n/a	24.2130	96.1089
<i>R. chaudhurii</i> (Preston, 1912)	Myanmar: Ayeyarwady Basin, Lake Indaw	RMBH: biv 614/1	OL597726	n/a	n/a	24.2123	96.0819
<i>R. chaudhurii</i> (Preston, 1912)	Myanmar: Ayeyarwady Basin, Lake Indaw	RMBH: biv 614/2	OL597727	n/a	n/a	24.2123	96.0819
<i>R. chaudhurii</i> (Preston, 1912)	Myanmar: Ayeyarwady Basin, Shweli River	RMBH: biv 913/1	OL597728	n/a	n/a	24.0171	96.4729
<i>R. chaudhurii</i> (Preston, 1912)	Myanmar: Ayeyarwady Basin, Shweli River	RMBH: biv 913/2	OL597729	n/a	n/a	24.0171	96.4729
<i>R. chaudhurii</i> (Preston, 1912)	Myanmar: Ayeyarwady Basin, Shweli River	RMBH: biv 913/3	OL597730	n/a	n/a	24.0171	96.4729
<i>R. chaudhurii</i> (Preston, 1912)	Myanmar: Ayeyarwady Basin, Mole Stream	RMBH: biv 920/1	OL597731	OL598375	n/a	24.4010	97.2544
<i>R. chaudhurii</i> (Preston, 1912)	Myanmar: Ayeyarwady Basin, Mole Stream	RMBH: biv 920/2	OL597732	n/a	n/a	24.4010	97.2544
<i>R. chaudhurii</i> (Preston, 1912)	Myanmar: Ayeyarwady Basin, Mole Stream	RMBH: biv 920/3	OL597733	n/a	n/a	24.4010	97.2544
<i>R. chaudhurii</i> (Preston, 1912)	Myanmar: Ayeyarwady Basin, Mole Stream	RMBH: biv 921/1	OL597734	OL598376	n/a	24.4010	97.2544
<i>R. chaudhurii</i> (Preston, 1912)	Myanmar: Ayeyarwady Basin, Mole Stream	RMBH: biv 921/2	OL597735	n/a	n/a	24.4010	97.2544
<i>R. chaudhurii</i> (Preston, 1912)	Myanmar: Ayeyarwady Basin, Mole Stream	RMBH: biv 921/3	OL597736	n/a	n/a	24.4010	97.2544
<i>R. myitkyinae</i> (Prashad, 1930)	Myanmar: Ayeyarwady Basin, Lake Indawgyi	RMBH: biv 107/1	KX865838	KX865609	KX865710	25.1099	96.2925
<i>R. myitkyinae</i> (Prashad, 1930)	Myanmar: Ayeyarwady Basin, Lake Indawgyi	RMBH: biv 107/2	KX865839	KX865610	KX865711	25.1099	96.2925
<i>R. myitkyinae</i> (Prashad, 1930)	Myanmar: Ayeyarwady Basin, Lake Indawgyi	RMBH: biv 107/3	KX865840	KX865611	KX865712	25.1099	96.2925

<i>R. myitkyinae</i> (Prashad, 1930)	Myanmar: Ayeyarwady Basin, Lake Indawgyi	RMBH: biv 106/1	KX865841	KX865612	KX865713	25.1099	96.2925
<i>R. myitkyinae</i> (Prashad, 1930)	Myanmar: Ayeyarwady Basin, Lake Indawgyi	RMBH: biv 106/2	KX865843	KX865613	KX865715	25.1099	96.2925
<i>R. myitkyinae</i> (Prashad, 1930)	Myanmar: Ayeyarwady Basin, Lake Indawgyi	RMBH: biv 106/3	KX865842	KX865614	KX865714	25.1099	96.2925
<i>R. myitkyinae</i> (Prashad, 1930)	Myanmar: Ayeyarwady Basin, Mogaung River	RMBH: biv 971/1	OL597737	n/a	n/a	25.3151	96.9326
<i>R. myitkyinae</i> (Prashad, 1930)	Myanmar: Ayeyarwady Basin, Mogaung River	RMBH: biv 971/2	OL597738	n/a	n/a	25.3151	96.9326
<i>R. myitkyinae</i> (Prashad, 1930)	Myanmar: Ayeyarwady Basin, Mogaung River	RMBH: biv 971/3	OL597739	n/a	n/a	25.3151	96.9326
<i>R. crispisulcata</i> (Benson, 1862)	Myanmar: Ayeyarwady Basin, Nga Wun River	RMBH: biv 671/1	MN275081	MN307267	MN307209	18.8624	95.2822
<i>R. crispisulcata</i> (Benson, 1862)	Myanmar: Ayeyarwady Basin, Nga Wun River	RMBH: biv 671/2	MN275082	MN307268	MN307210	18.8624	95.2822
<i>R. crispisulcata</i> (Benson, 1862)	Myanmar: Ayeyarwady Basin, Nga Wun River	RMBH: biv 671/3	MN275083	MN307269	MN307211	18.8624	95.2822
<i>R. chindwinensis</i> Bolotov et al., 2019	Myanmar: Ayeyarwady Basin, Myit Tha (Manipur) River	RMBH: biv 345/1	MK372404	MK372452	MK372482	23.2006	94.2214
<i>R. chindwinensis</i> Bolotov et al., 2019	Myanmar: Ayeyarwady Basin, Myit Tha (Manipur) River	RMBH: biv 345/2	MK372405	MK372453	MK372483	23.2006	94.2214
<i>R. chindwinensis</i> Bolotov et al., 2019	Myanmar: Ayeyarwady Basin, Chindwin River	RMBH: biv 348/2	MK372410	MK372458	MK372488	23.1918	94.3217
<i>R. chindwinensis</i> Bolotov et al., 2019	Myanmar: Ayeyarwady Basin, tributary of Nay Chin Sayar River	RMBH: biv 357/1	MK372414	MK372462	MK372492	23.4160	94.0875
<i>R. chindwinensis</i> Bolotov et al., 2019	Myanmar: Ayeyarwady Basin, tributary of Nay Chin Sayar River	RMBH: biv 357/2	MK372415	n/a	n/a	23.4160	94.0875
<i>R. chindwinensis</i> Bolotov et al., 2019	Myanmar: Ayeyarwady Basin, tributary of Nay Chin Sayar River	RMBH: biv 357/3	MK372416	n/a	n/a	23.4160	94.0875
<i>R. myitthanensis</i> Bolotov et al., 2019	Myanmar: Ayeyarwady Basin, Myit Tha (Manipur) River	RMBH biv 337/3	MK372396	MK372450	MK372477	23.2285	94.1434
<i>R. myitthanensis</i> Bolotov et al., 2019	Myanmar: Ayeyarwady Basin, Chindwin River	RMBH biv 348/1	MK372409	MK372457	MK372487	23.1918	94.3217
<b>Lamellidentini Modell, 1942</b>							
<b><i>Trapezidens</i> Bolotov, Vikhrev &amp; Konopleva in Bolotov et al., 2017</b>							
<i>Trapezidens exolescens</i> (Gould, 1843)	Myanmar: Dawei River	RMBH: biv 145/3	KX230532	KX230548	KX230559	14.5013	98.1558
<i>T. exolescens</i> (Gould, 1843)	Myanmar: Dawei River	RMBH: biv 145/12	KX230535	KX230549	KX230560	14.5013	98.1558
<i>T. exolescens</i> (Gould, 1843)	Myanmar: Dawei River	RMBH: biv 145/21	KX230536	KX230550	KX230561	14.5013	98.1558
<i>T. exolescens</i> (Gould, 1843)	Myanmar: Dawei River	RMBH: biv 146/2	KX230537	KX230551	KX230562	14.5013	98.1558
<i>T. exolescens</i> (Gould, 1843)	Myanmar: Dawei River	RMBH: biv 146/11	KX230539	n/a	n/a	14.5013	98.1558
<i>T. exolescens</i> (Gould, 1843)	Myanmar: Dawei River	RMBH: biv 146/14	KX230540	KX230552	KX230563	14.5013	98.1558
<i>T. exolescens</i> (Gould, 1843)	Myanmar: Dawei River	RMBH: biv 146/23	KX230542	KX230542	KX230564	14.5013	98.1558
<i>T. scutum</i> (Sowerby, 1868)	Myanmar: Tanintharyi Basin, Nga Wun River	RMBH: biv 630/1	MN275084	MN307270	MN307212	11.8567	99.1181
<i>T. scutum</i> (Sowerby, 1868)	Myanmar: Tanintharyi Basin, Nga Wun River	RMBH: biv 630/2	MN275085	MN307271	MN307213	11.8567	99.1181

<i>T. scutum</i> (Sowerby, 1868)	Myanmar: Tanintharyi Basin, Nga Wun River	RMBH: biv 632/1	MN275086	MN307272	MN307214	11.8567	99.1181
<i>T. scutum</i> (Sowerby, 1868)	Myanmar: Tanintharyi Basin, Nga Wun River	RMBH: biv 632/2	MN780892	n/a	n/a	11.8567	99.1181
<i>T. scutum</i> (Sowerby, 1868)	Myanmar: Tanintharyi Basin, Nga Wun Stream	RMBH: biv 644	MN780893	n/a	n/a	11.8233	99.1493
<i>T. scutum</i> (Sowerby, 1868)	Myanmar: Tanintharyi Basin, Nga Wun Stream	RMBH: biv 645/1	MN780894	n/a	n/a	11.8233	99.1493
<i>T. angustior</i> (Hanley & Theobald, 1876)	Myanmar: Sittaung Basin, Myit Kyi Pauk Stream	RMBH: biv 250/4	MF352238	MF352308	MF352366	18.9613	96.4455
<i>T. angustior</i> (Hanley & Theobald, 1876)	Myanmar: Sittaung Basin, Myit Kyi Pauk Stream	RMBH: biv 250/7	MF352239	MF352309	MF352367	18.9613	96.4455
<i>T. angustior</i> (Hanley & Theobald, 1876)	Myanmar: Sittaung Basin, Myit Kyi Pauk Stream	RMBH: biv 250/8	MF352240	MF352310	MF352310	18.9613	96.4455
<i>T. angustior</i> (Hanley & Theobald, 1876)	Myanmar: Sittaung Basin, Thauk Ye Kupt River	RMBH: biv 255/1	MF352253	MF352320	MF352378	18.9840	96.4361
<i>T. angustior</i> (Hanley & Theobald, 1876)	Myanmar: Bilin River	RMBH: biv 370/1	MN275087	MN307273	MN307215	17.3306	97.2418
<i>T. angustior</i> (Hanley & Theobald, 1876)	Myanmar: Bilin River	RMBH: biv 370/2	MN780875	n/a	n/a	17.3306	97.2418
<i>T. angustior</i> (Hanley & Theobald, 1876)	Myanmar: Bilin River	RMBH: biv 370/3	MN780876	n/a	n/a	17.3306	97.2418
<i>T. angustior</i> (Hanley & Theobald, 1876)	Myanmar: Bago River	RMBH: biv 382/1	MN780877	n/a	n/a	17.9769	96.7659
<i>T. angustior</i> (Hanley & Theobald, 1876)	Myanmar: Bago River	RMBH: biv 382/2	MN780878	n/a	n/a	17.9769	96.7659
<i>T. angustior</i> (Hanley & Theobald, 1876)	Myanmar: Bago River	RMBH: biv 382/3	MN780879	n/a	n/a	17.5334	96.3315
<i>T. angustior</i> (Hanley & Theobald, 1876)	Myanmar: Bago Basin, Moload Stream	RMBH: biv 385/1	MN780880	n/a	n/a	17.5334	96.3315
<i>T. angustior</i> (Hanley & Theobald, 1876)	Myanmar: Bago Basin, Kyak Phar Stream	RMBH: biv 387/3	MN780881	n/a	n/a	17.5334	96.3315
<i>T. angustior</i> (Hanley & Theobald, 1876)	Myanmar: Bago Basin, Kyak Phar Stream	RMBH: biv 388/1	MN780882	n/a	n/a	17.6011	96.2861
<i>T. angustior</i> (Hanley & Theobald, 1876)	Myanmar: Bago Basin, Kyak Phar Stream	RMBH: biv 388/2	MN780883	n/a	n/a	17.6660	96.2465
<i>T. angustior</i> (Hanley & Theobald, 1876)	Myanmar: Bago Basin, Kyak Phar Stream	RMBH: biv 388/3	MN780884	n/a	n/a	17.6660	96.2465
<i>T. angustior</i> (Hanley & Theobald, 1876)	Myanmar: Sittaung Basin, Chain Stream	RMBH: biv 394/1	MN275088	n/a	n/a	17.6660	96.2465
<i>T. angustior</i> (Hanley & Theobald, 1876)	Myanmar: Sittaung Basin, Chain Stream	RMBH: biv 394/3	MN780885	n/a	n/a	17.6660	96.2465
<i>T. dolichorhynchus</i> (Tapparone Canefri, 1889)	Myanmar: Ayeyarwady River	UA<USA-AL>:20729.1	JN243903	KP795042	JN243881	21.4819	95.3050
<i>T. dolichorhynchus</i> (Tapparone Canefri, 1889)	Myanmar: Ayeyarwady Basin, Manipur River	RMBH: biv 336/1	MN780869	n/a	n/a	23.2285	94.1434
<i>T. dolichorhynchus</i> (Tapparone Canefri, 1889)	Myanmar: Ayeyarwady Basin, Manipur River	RMBH: biv 336/2	MN780870	n/a	n/a	23.2285	94.1434
<i>T. dolichorhynchus</i> (Tapparone Canefri, 1889)	Myanmar: Ayeyarwady Basin, Manipur River	RMBH: biv 336/3	MN275090	n/a	MN307217	23.2285	94.1434
<i>T. dolichorhynchus</i> (Tapparone Canefri, 1889)	Myanmar: Ayeyarwady Basin, Chindwin River	RMBH: biv 353	MN780871	n/a	n/a	23.1499	94.3629
<i>T. dolichorhynchus</i> (Tapparone Canefri, 1889)	Myanmar: Ayeyarwady Basin, Chindwin River	RMBH: biv 354/1	MN780872	n/a	n/a	23.1499	94.3629
<i>T. dolichorhynchus</i> (Tapparone Canefri, 1889)	Myanmar: Ayeyarwady Basin, Chindwin River	RMBH: biv 354/2	MN780873	n/a	n/a	23.1499	94.3629
<i>T. dolichorhynchus</i> (Tapparone Canefri, 1889)	Myanmar: Ayeyarwady Basin, Chindwin River	RMBH: biv 354/3	MN780874	n/a	n/a	23.1499	94.3629

<i>T. dolichorhynchus</i> (Tapparone Canefri, 1889)	Myanmar: Ayeyarwady River near Tant Kyi village	RMBH: biv 417/1	MN275089	MN307274	MN307216	21.1567	94.8050
<i>T. dolichorhynchus</i> (Tapparone Canefri, 1889)	Myanmar: Ayeyarwady River near Tant Kyi village	RMBH: biv 417/2	MN780886	n/a	n/a	21.1567	94.8050
<i>T. dolichorhynchus</i> (Tapparone Canefri, 1889)	Myanmar: Ayeyarwady River near Tant Kyi village	RMBH: biv 417/3	MN780887	n/a	n/a	21.1567	94.8050
<i>T. dolichorhynchus</i> (Tapparone Canefri, 1889)	Myanmar: Ayeyarwady River at Mandalay city	RMBH: biv 442/1	OL597740	n/a	n/a	21.9909	96.0610
<i>T. dolichorhynchus</i> (Tapparone Canefri, 1889)	Myanmar: Ayeyarwady River at Mandalay city	RMBH: biv 442/2	OL597741	n/a	n/a	21.9909	96.0610
<i>T. yeti</i> Konopleva et al., 2020	Myanmar: Ye River	RMBH: biv 616/1	MN780888	MN759081	MN759085	15.2957	97.9984
<i>T. yeti</i> Konopleva et al., 2020	Myanmar: Ye River	RMBH: biv 616/2	MN780889	MN759082	MN759086	15.2957	97.9984
<i>T. yeti</i> Konopleva et al., 2020	Myanmar: Ye River	RMBH: biv 617/1	MN780890	MN759083	MN759087	15.2957	97.9984
<i>T. yeti</i> Konopleva et al., 2020	Myanmar: Ye River	RMBH: biv 617/2	MN780891	MN759084	MN759088	15.2957	97.9984
<b>Lamellidens Simpson, 1900</b>							
<i>Lamellidens savadiensis</i> (Nevill, 1877)	Myanmar: Ayeyarwady Basin, Lake Indawgyi	RMBH: biv 109/1	KX230544	KX230555	KX230566	25.1099	96.2925
<i>L. savadiensis</i> (Nevill, 1877)	Myanmar: Ayeyarwady Basin, Lake Indawgyi	RMBH: biv 109/2	KX230545	KX230556	KX230567	25.1099	96.2925
<i>L. savadiensis</i> (Nevill, 1877)	Myanmar: Ayeyarwady Basin, Lake Indawgyi	RMBH: biv 109/3	KX230546	KX230557	KX230568	25.1099	96.2925
<i>L. savadiensis</i> (Nevill, 1877)	Myanmar: Sittaung Basin, Pathi River	RMBH: biv 242/8	MF352220	MF352294	MF352352	19.0278	96.5353
<i>L. savadiensis</i> (Nevill, 1877)	Myanmar: Sittaung Basin, Pathi River	RMBH: biv 242/15	MF352221	MF352295	MF352353	19.0278	96.5353
<i>L. savadiensis</i> (Nevill, 1877)	Myanmar: Sittaung Basin, fishing pond	RMBH: biv 247/8	MF352231	MF352303	MF352361	18.9593	96.4831
<i>L. savadiensis</i> (Nevill, 1877)	Myanmar: Sittaung Basin, fishing pond	RMBH: biv 247/14	MF352233	n/a	n/a	18.9593	96.4831
<i>L. savadiensis</i> (Nevill, 1877)	Myanmar: Ayeyarwady Basin, Lake Nant Phar	RMBH: biv 257/1	MF352258	MF352322	MF352383	24.2972	97.2610
<i>L. savadiensis</i> (Nevill, 1877)	Myanmar: Ayeyarwady Basin, Lake Nant Phar	RMBH: biv 257/6	MF352259	MF352323	MF352384	24.2972	97.2610
<i>L. savadiensis</i> (Nevill, 1877)	Myanmar: Ayeyarwady Basin, Lake Nant Phar	RMBH: biv 257/9	MF352260	MF352324	MF352385	24.2972	97.2610
<i>L. savadiensis</i> (Nevill, 1877)	Myanmar: Ayeyarwady Basin, Lake Shwe Kyi	RMBH: biv 261/3	MF352269	MF352333	MF352393	24.2927	97.2299
<i>L. savadiensis</i> (Nevill, 1877)	Myanmar: Ayeyarwady Basin, Lake Shwe Kyi	RMBH: biv 261/6	MF352270	MF352334	MF352394	24.2927	97.2299
<i>L. savadiensis</i> (Nevill, 1877)	Myanmar: Ayeyarwady Basin, Lake Shwe Kyi	RMBH: biv 261/7	MF352271	n/a	n/a	24.2927	97.2299
<i>L. savadiensis</i> (Nevill, 1877)	Myanmar: Ayeyarwady Basin, Nant Sa Yi River	RMBH: biv 262/1	MF352272	MF352335	MF352395	24.2196	97.2224
<i>L. savadiensis</i> (Nevill, 1877)	Myanmar: Ayeyarwady Basin, Nant Sa Yi River	RMBH: biv 262/2	MF352273	n/a	n/a	24.2196	97.2224
<i>L. savadiensis</i> (Nevill, 1877)	Myanmar: Ayeyarwady Basin, Nant Sa Yi River	RMBH: biv 262/4	MF352274	MF352336	MF352396	24.2196	97.2224
<i>L. savadiensis</i> (Nevill, 1877)	Myanmar: Ayeyarwady Basin, Lake Myaung	RMBH: biv 264/1	MF352277	MF352339	MF352398	24.2387	97.1658
<i>L. savadiensis</i> (Nevill, 1877)	Myanmar: Ayeyarwady Basin, Lake Myaung	RMBH: biv 264/4	MF352278	n/a	n/a	24.2387	97.1658
<i>L. savadiensis</i> (Nevill, 1877)	Myanmar: Ayeyarwady Basin, Lake Myaung	RMBH: biv 264/7	MF352279	MF352340	MF352399	24.2387	97.1658

<i>L. savadiensis</i> (Nevill, 1877)	Myanmar: Salween Basin, Lake Nadi	RMBH: biv 399/1	OL597742	n/a	n/a	20.6858	96.9316
<i>L. savadiensis</i> (Nevill, 1877)	Myanmar: Salween Basin, Lake Nadi	RMBH: biv 399/2	OL597743	n/a	n/a	20.6858	96.9316
<i>L. savadiensis</i> (Nevill, 1877)	Myanmar: Sittaung Basin, Hnit Saung Pyang Stream	RMBH: biv 408	OL597744	n/a	n/a	19.5140	96.2621
<i>L. savadiensis</i> (Nevill, 1877)	Myanmar: Sittaung Basin, Sin Thay Dam	RMBH: biv 413/1	OL597745	n/a	OL598395	20.1540	96.1149
<i>L. savadiensis</i> (Nevill, 1877)	Myanmar: Sittaung Basin, Sin Thay Dam	RMBH: biv 413/2	OL597746	n/a	n/a	20.1540	96.1149
<i>L. savadiensis</i> (Nevill, 1877)	Myanmar: Sittaung Basin, Sin Thay Dam	RMBH: biv 413/3	OL597747	n/a	n/a	20.1540	96.1149
<i>L. savadiensis</i> (Nevill, 1877)	Myanmar: Ayeyarwady Basin, Mone Ding Dam outlet	RMBH: biv 415/1	OL597748	n/a	OL598396	20.8099	95.7242
<i>L. savadiensis</i> (Nevill, 1877)	Myanmar: Ayeyarwady Basin, Mone Ding Dam outlet	RMBH: biv 415/2	OL597749	n/a	n/a	20.8099	95.7242
<i>L. savadiensis</i> (Nevill, 1877)	Myanmar: Ayeyarwady Basin, Mone Ding Dam outlet	RMBH: biv 415/3	OL597750	n/a	n/a	20.8099	95.7242
<i>L. savadiensis</i> (Nevill, 1877)	Myanmar: Ayeyarwady Basin, Mone Ding Dam outlet	RMBH: biv 416/1	OL597751	n/a	n/a	20.8099	95.7242
<i>L. savadiensis</i> (Nevill, 1877)	Myanmar: Ayeyarwady Basin, Mone Ding Dam outlet	RMBH: biv 416/2	OL597752	n/a	OL598397	20.8099	95.7242
<i>L. savadiensis</i> (Nevill, 1877)	Myanmar: Ayeyarwady Basin, Mone Ding Dam outlet	RMBH: biv 416/3	OL597753	n/a	n/a	20.8099	95.7242
<i>L. savadiensis</i> (Nevill, 1877)	Myanmar: Ayeyarwady Basin, ox-bow lake near Ta Naung Taig village	RMBH: biv 427A/1	OL597754	n/a	OL598398	21.4064	95.3399
<i>L. savadiensis</i> (Nevill, 1877)	Myanmar: Ayeyarwady Basin, ox-bow lake near Ta Naung Taig village	RMBH: biv 427A/2	OL597755	n/a	n/a	21.4064	95.3399
<i>L. savadiensis</i> (Nevill, 1877)	Myanmar: Ayeyarwady River at Mandalay city	RMBH: biv 442/3	OL597756	n/a	n/a	21.9909	96.0610
<i>L. generosus</i> (Gould, 1847)	Myanmar: Sittaung Basin, Pathi River	RMBH: biv 242/3	MF352219	MF352293	MF352351	19.0278	96.5353
<i>L. generosus</i> (Gould, 1847)	Myanmar: Sittaung Basin, Pathi River	RMBH: biv 243/10	MF352222	MF352296	MF352354	19.0278	96.5353
<i>L. generosus</i> (Gould, 1847)	Myanmar: Sittaung Basin, Pathi River	RMBH: biv 243/12	MF352223	MF352297	MF352355	19.0278	96.5353
<i>L. generosus</i> (Gould, 1847)	Myanmar: Sittaung Basin, Pathi River	RMBH: biv 243/14	MF352224	n/a	n/a	19.0278	96.5353
<i>L. generosus</i> (Gould, 1847)	Myanmar: Sittaung Basin, reservoir of Yetho River	RMBH: biv 244/2	MF352225	n/a	n/a	18.8457	96.3012
<i>L. generosus</i> (Gould, 1847)	Myanmar: Sittaung Basin, reservoir of Yetho River	RMBH: biv 244/3	MF352226	MF352298	MF352356	18.8457	96.3012
<i>L. generosus</i> (Gould, 1847)	Myanmar: Sittaung Basin, reservoir of Yetho River	RMBH: biv 244/5	MF352227	MF352299	MF352357	18.8457	96.3012
<i>L. generosus</i> (Gould, 1847)	Myanmar: Sittaung Basin, fishing pond	RMBH: biv 247/10	MF352232	MF352304	MF352362	18.9593	96.4831
<i>L. generosus</i> (Gould, 1847)	Myanmar: Sittaung River near Taungoo	RMBH: biv 250/13	MF352241	MF352311	MF352369	18.9613	96.4455
<i>L. generosus</i> (Gould, 1847)	Myanmar: Ayeyarwady Basin, Kalemmyo market	RMBH: biv 355/1	OL597757	n/a	OL598399	23.1746	94.0423
<i>L. generosus</i> (Gould, 1847)	Myanmar: Ayeyarwady Basin, Kalemmyo market	RMBH: biv 355/2	OL597758	n/a	n/a	23.1746	94.0423

<i>L. generosus</i> (Gould, 1847)	Myanmar: Ayeyarwady Basin, Kalemmyo market	RMBH: biv 355/3	OL597759	n/a	n/a	23.1746	94.0423
<i>L. generosus</i> (Gould, 1847)	Myanmar: Ayeyarwady Basin, fish pond near Kalemmyo	RMBH: biv 356/1	OL597760	n/a	n/a	23.1746	94.0423
<i>L. generosus</i> (Gould, 1847)	Myanmar: Ayeyarwady Basin, fish pond near Kalemmyo	RMBH: biv 356/2	OL597761	n/a	OL598400	23.1746	94.0423
<i>L. generosus</i> (Gould, 1847)	Myanmar: Ayeyarwady Basin, fish pond near Kalemmyo	RMBH: biv 356/3	OL597762	n/a	n/a	23.1746	94.0423
<i>L. generosus</i> (Gould, 1847)	Myanmar: Ayeyarwady Basin, tributary of Nay Chin Sayar River	RMBH: biv 358/1	OL597763	n/a	OL598401	23.4160	94.0875
<i>L. generosus</i> (Gould, 1847)	Myanmar: Ayeyarwady Basin, tributary of Nay Chin Sayar River	RMBH: biv 358/2	OL597764	n/a	n/a	23.4160	94.0875
<i>L. generosus</i> (Gould, 1847)	Myanmar: Ayeyarwady Basin, tributary of Nay Chin Sayar River	RMBH: biv 358/3	OL597765	n/a	n/a	23.4160	94.0875
<i>L. generosus</i> (Gould, 1847)	Myanmar: tributary of Haungthayaw River	RMBH: biv 359/1	OL597766	n/a	n/a	16.6104	98.0110
<i>L. generosus</i> (Gould, 1847)	Myanmar: tributary of Haungthayaw River	RMBH: biv 359/3	OL597767	n/a	OL598402	16.6104	98.0110
<i>L. generosus</i> (Gould, 1847)	Myanmar: Haungthayaw River upStream of Kawkareik town	RMBH: biv 363/1	OL597768	n/a	OL598403	16.4714	98.2183
<i>L. generosus</i> (Gould, 1847)	Myanmar: Haungthayaw River upStream of Kawkareik town	RMBH: biv 363/2	OL597769	n/a	n/a	16.4714	98.2183
<i>L. generosus</i> (Gould, 1847)	Myanmar: Haungthayaw River upStream of Kawkareik town	RMBH: biv 363/3	OL597770	n/a	n/a	16.4714	98.2183
<i>L. generosus</i> (Gould, 1847)	Myanmar: Haungthayaw Basin, Stream near Kawkareik town	RMBH: biv 364/1	OL597771	n/a	OL598404	16.5365	98.2202
<i>L. generosus</i> (Gould, 1847)	Myanmar: Haungthayaw Basin, Stream near Kawkareik town	RMBH: biv 364/3	OL597772	n/a	n/a	16.5365	98.2202
<i>L. generosus</i> (Gould, 1847)	Myanmar: Haungthayaw Basin, ox-bow lake south of Hpa-An airport	RMBH: biv 365/1	OL597773	n/a	OL598405	16.8819	97.6629
<i>L. generosus</i> (Gould, 1847)	Myanmar: Haungthayaw Basin, ox-bow lake south of Hpa-An airport	RMBH: biv 365/2	OL597774	n/a	n/a	16.8819	97.6629
<i>L. generosus</i> (Gould, 1847)	Myanmar: Salween Basin, Mizan Stream	RMBH: biv 366/2	OL597775	n/a	OL598406	16.9770	97.6330
<i>L. generosus</i> (Gould, 1847)	Myanmar: Salween Basin, Mizan Stream	RMBH: biv 366/3	OL597776	n/a	n/a	16.9770	97.6330
<i>L. generosus</i> (Gould, 1847)	Myanmar: Bilin Basin, Lake Shwe Laung	RMBH: biv 372/1	OL597777	n/a	OL598407	17.4395	97.2457
<i>L. generosus</i> (Gould, 1847)	Myanmar: Bilin Basin, Lake Shwe Laung	RMBH: biv 372/2	OL597778	n/a	n/a	17.4395	97.2457
<i>L. generosus</i> (Gould, 1847)	Myanmar: Bilin Basin, Lake Shwe Laung	RMBH: biv 372/3	OL597779	n/a	n/a	17.4395	97.2457
<i>L. generosus</i> (Gould, 1847)	Myanmar: Bago - Sittaung channel	RMBH: biv 376/1	OL597780	n/a	n/a	17.5818	96.7733
<i>L. generosus</i> (Gould, 1847)	Myanmar: Bago - Sittaung channel	RMBH: biv 376/2	OL597781	n/a	n/a	17.5818	96.7733
<i>L. generosus</i> (Gould, 1847)	Myanmar: Bago - Sittaung channel	RMBH: biv 376/3	OL597782	n/a	n/a	17.5818	96.7733
<i>L. generosus</i> (Gould, 1847)	Myanmar: Lake Moeyungyi	RMBH: biv 378/1	OL597783	n/a	n/a	17.5968	96.5950



<i>L. generosus</i> (Gould, 1847)	Myanmar: Lake Moeyungyi	RMBH: biv 378/2	OL597784	n/a	n/a	17.5968	96.5950
<i>L. generosus</i> (Gould, 1847)	Myanmar: Lake Moeyungyi	RMBH: biv 378/3	OL597785	n/a	n/a	17.5968	96.5950
<i>L. generosus</i> (Gould, 1847)	Myanmar: Bago Basin, pond near the Salu Dam	RMBH: biv 379/1	OL597786	n/a	n/a	17.5492	96.3736
<i>L. generosus</i> (Gould, 1847)	Myanmar: Bago Basin, pond near the Salu Dam	RMBH: biv 379/2	OL597787	n/a	n/a	17.5492	96.3736
<i>L. generosus</i> (Gould, 1847)	Myanmar: Bago Basin, pond near the Salu Dam	RMBH: biv 379/3	OL597788	n/a	n/a	17.5492	96.3736
<i>L. generosus</i> (Gould, 1847)	Myanmar: Bago River	RMBH: biv 384/1	OL597789	n/a	n/a	17.5334	96.3315
<i>L. generosus</i> (Gould, 1847)	Myanmar: Bago River	RMBH: biv 384/2	OL597790	n/a	OL598408	17.5334	96.3315
<i>L. generosus</i> (Gould, 1847)	Myanmar: Bago River	RMBH: biv 384/3	OL597791	n/a	n/a	17.5334	96.3315
<i>L. generosus</i> (Gould, 1847)	Myanmar: Bago Basin, Moload Stream	RMBH: biv 385/2	OL597792	n/a	n/a	17.6011	96.2861
<i>L. generosus</i> (Gould, 1847)	Myanmar: Bago Basin, Moload Stream	RMBH: biv 385/3	OL597793	n/a	n/a	17.6011	96.2861
<i>L. generosus</i> (Gould, 1847)	Myanmar: Bago Basin, Kyauk Phar Stream	RMBH: biv 387/1	OL597794	n/a	n/a	17.6660	96.2465
<i>L. generosus</i> (Gould, 1847)	Myanmar: Bago Basin, Kyauk Phar Stream	RMBH: biv 387/2	OL597795	n/a	n/a	17.6660	96.2465
<i>L. generosus</i> (Gould, 1847)	Myanmar: Bago Basin, Pagaing Stream	RMBH: biv 392/1	OL597796	n/a	n/a	17.7080	96.7155
<i>L. generosus</i> (Gould, 1847)	Myanmar: Bago Basin, Pagaing Stream	RMBH: biv 392/2	OL597797	n/a	n/a	17.7080	96.7155
<i>L. generosus</i> (Gould, 1847)	Myanmar: Bago Basin, Pagaing Stream	RMBH: biv 392/3	OL597798	n/a	n/a	17.7080	96.7155
<i>L. generosus</i> (Gould, 1847)	Myanmar: Hlaingbwe Basin, Hlaingbwe Stream	RMBH: biv 636/1	OL597799	n/a	n/a	17.0292	97.8099
<i>L. generosus</i> (Gould, 1847)	Myanmar: Hlaingbwe Basin, Hlaingbwe Stream	RMBH: biv 636/2	OL597800	OL598377	OL598409	17.0292	97.8099
<i>L. generosus</i> (Gould, 1847)	Myanmar: Hlaingbwe Basin, Hlaingbwe Stream	RMBH: biv 636/3	OL597801	OL598378	OL598410	17.0292	97.8099
<i>L. generosus</i> (Gould, 1847)	Myanmar: Ayeyarwady Basin, Pathein River	RMBH: biv 648/1	OL597802	n/a	n/a	17.4567	95.0086
<i>L. generosus</i> (Gould, 1847)	Myanmar: Ayeyarwady Basin, Pathein River	RMBH: biv 648/2	OL597803	n/a	n/a	17.4567	95.0086
<i>L. generosus</i> (Gould, 1847)	Myanmar: Ayeyarwady Basin, Nga Wun River near Pyay city	RMBH: biv 672/1	OL597804	n/a	n/a	18.8624	95.2822
<i>L. generosus</i> (Gould, 1847)	Myanmar: Ayeyarwady Basin, Nga Wun River near Pyay city	RMBH: biv 672/2	OL597805	n/a	n/a	18.8624	95.2822
<i>L. generosus</i> (Gould, 1847)	Myanmar: Haungthayaw River	RMBH: biv 1024/1	OL597806	OL598379	n/a	15.9620	98.4152
<i>L. generosus</i> (Gould, 1847)	Myanmar: Haungthayaw River	RMBH: biv 1024/2	OL597807	n/a	n/a	15.9620	98.4152
<i>L. generosus</i> (Gould, 1847)	Myanmar: Haungthayaw River	RMBH: biv 1024/3	OL597808	n/a	n/a	15.9620	98.4152
<i>L. ferrugineus</i> (Annandale, 1918)	Myanmar: Salween Basin, Lake Inle, a channel in Nuangshve	RMBH: biv 112/7	KX865828	KX865599	KX865702	20.6632	96.9310
<i>L. ferrugineus</i> (Annandale, 1918)	Myanmar: Salween Basin, Lake Inle, a channel in Nuangshve	RMBH: biv 112/12	KX865829	KX865600	KX865703	20.6632	96.9310
<i>L. ferrugineus</i> (Annandale, 1918)	Myanmar: Salween Basin, Lake Inle, a channel in Nuangshve	RMBH: biv 112/15	KX865830	KX865601	KX865704	20.6632	96.9310
<i>L. ferrugineus</i> (Annandale, 1918)	Myanmar: Salween Basin, lower channel of Lake Inle	RMBH: biv 113/8	KX865825	KX865596	KX865699	20.4421	96.9037

<i>L. ferrugineus</i> (Annandale, 1918)	Myanmar: Salween Basin, lower channel of Lake Inle	RMBH: biv 113/12	KX865826	KX865597	KX865700	20.4421	96.9037
<i>L. ferrugineus</i> (Annandale, 1918)	Myanmar: Salween Basin, lower channel of Lake Inle	RMBH: biv 113/14	KX865827	KX865598	KX865701	20.4421	96.9037
<i>L. ferrugineus</i> (Annandale, 1918)	Myanmar: Salween Basin, Nam Pilu River	RMBH: biv 141/5	KX865831	KX865602	KX865705	19.6746	97.1352
<i>L. ferrugineus</i> (Annandale, 1918)	Myanmar: Salween Basin, Nam Pilu River	RMBH: biv 141/9	KX865832	KX865603	KX865706	19.6746	97.1352
<i>L. ferrugineus</i> (Annandale, 1918)	Myanmar: Salween Basin, Nam Pilu River	RMBH: biv 141/18	KX865833	KX865604	KX865707	19.6746	97.1352
<i>L. ferrugineus</i> (Annandale, 1918)	Myanmar: Salween Basin, Snake Stream	RMBH: biv 142/1	KX865834	KX865605	KX865708	19.7266	97.0992
<i>L. ferrugineus</i> (Annandale, 1918)	Myanmar: Salween Basin, Lake Inle, Nan Lat Stream	RMBH: biv 397/1	OL597809	n/a	n/a	20.9162	96.9144
<i>L. ferrugineus</i> (Annandale, 1918)	Myanmar: Salween Basin, Lake Inle, Nan Lat Stream	RMBH: biv 397/2	OL597810	n/a	n/a	20.9162	96.9144
<i>L. ferrugineus</i> (Annandale, 1918)	Myanmar: Salween Basin, Lake Inle, tributary of Nan Lat Stream	RMBH: biv 398/3	OL597811	n/a	n/a	21.0930	96.9282
<i>L. ferrugineus</i> (Annandale, 1918)	Myanmar: Salween Basin, Wain Kaun	RMBH: biv 401/1	OL597812	n/a	n/a	20.1323	97.1957
<i>L. ferrugineus</i> (Annandale, 1918)	Myanmar: Salween Basin, Wain Kaun	RMBH: biv 401/2	OL597813	n/a	n/a	20.1323	97.1957
<i>L. ferrugineus</i> (Annandale, 1918)	Myanmar: Salween Basin, Wain Kaun	RMBH: biv 401/3	OL597814	n/a	n/a	20.1323	97.1957
<i>L. ferrugineus</i> (Annandale, 1918)	Myanmar: Salween Basin, fish pond near Demoso	RMBH: biv 404/1	OL597815	n/a	n/a	19.7289	97.1167
<i>L. ferrugineus</i> (Annandale, 1918)	Myanmar: Salween Basin, fish pond near Demoso	RMBH: biv 404/2	OL597816	n/a	n/a	19.7289	97.1167
<i>L. ferrugineus</i> (Annandale, 1918)	Myanmar: Salween Basin, fish pond near Demoso	RMBH: biv 404/3	OL597817	n/a	n/a	19.7289	97.1167
<i>L. ferrugineus</i> (Annandale, 1918)	Myanmar: Salween Basin, Balu River near Loikaw	RMBH: biv 406A/1	OL597818	n/a	n/a	19.6682	97.1848
<i>L. ferrugineus</i> (Annandale, 1918)	Myanmar: Salween Basin, Balu River near Loikaw	RMBH: biv 406A/2	OL597819	n/a	n/a	19.6682	97.1848
<i>L. ferrugineus</i> (Annandale, 1918)	Myanmar: Salween Basin, Balu River near Loikaw	RMBH: biv 408A/1	OL597820	n/a	n/a	19.6682	97.1848
<i>L. ferrugineus</i> (Annandale, 1918)	Myanmar: Salween Basin, Balu River near Loikaw	RMBH: biv 408A/2	OL597821	n/a	n/a	19.6682	97.1848
<i>L. mainwaringi</i> Preston, 1912	Myanmar: Kaladan Basin, unnamed puddle	RMBH: biv 153	KX230547	KX230558	KX230569	21.0079	92.9832
<b>Parreysiini Henderson, 1935</b>							
<b><i>Parreysia</i> Conrad, 1853</b>							
<i>Parreysia rakhinensis</i> Bolotov et al., 2020	Myanmar: Kyeintali Stream, upStream of Odein village	RMBH: biv 652/1	MN275091	MN307275	MN307218	17.9193	94.5946
<i>Parreysia rakhinensis</i> Bolotov et al., 2020	Myanmar: Thandwe River, Ywar Shai village	RMBH: biv 656	MN275104	MN307276	MN307219	18.3741	94.4952
<i>Parreysia rakhinensis</i> Bolotov et al., 2020	Myanmar: tributary of the Ann River	RMBH: biv 660/3	MN275116	MN307277	MN307220	19.8035	94.0460
<b>Leoparreysiini Vikhrev, Bolotov &amp; Kondakov, 2017</b>							
<b><i>Leoparreysia</i> Vikhrev, Bolotov &amp; Aksenova in Bolotov et al., 2017</b>							
<i>Leoparreysia olivacea</i> (Prashad, 1930)	Myanmar: Ayeyarwady River, 3 mi SW Pakkoku, Magway Division	UMMZ: 304641	KP795022	KP795044	KP795005	n/a	n/a
<i>L. olivacea</i> (Prashad, 1930)	Myanmar: Ayeyarwady River, Nant Kaung River	RMBH: biv 932/1	OK480028	n/a	n/a	25.5361	96.7267
<i>L. olivacea</i> (Prashad, 1930)	Myanmar: Ayeyarwady River, Nant Kaung River	RMBH: biv 932/2	OK480029	n/a	n/a	25.5361	96.7267

<i>L. olivacea</i> (Prashad, 1930)	Myanmar: Ayeyarwady River, Nant Kaung River	RMBH: biv 932/3	OK480030	n/a	n/a	25.5361	96.7267
<i>L. canefrui</i> Vikhrev, Bolotov & Kondakov, 2017	Myanmar: Sittaung River near Taungoo	RMBH: biv 249	MF352237	MF352307	MF352365	18.9840	96.4361
<i>L. canefrui</i> Vikhrev, Bolotov & Kondakov, 2017	Myanmar: Sittaung River near Taungoo	RMBH: biv 252/1	MF352245	MF352315	MF352373	18.9840	96.4361
<i>L. canefrui</i> Vikhrev, Bolotov & Kondakov, 2017	Myanmar: Sittaung River near Taungoo	RMBH: biv 252/2	MF352246	MF352316	MF352374	18.9840	96.4361
<i>L. canefrui</i> Vikhrev, Bolotov & Kondakov, 2017	Myanmar: Sittaung River near Taungoo	RMBH: biv 252/3	MF352247	n/a	n/a	18.9840	96.4361
<i>L. canefrui</i> Vikhrev, Bolotov & Kondakov, 2017	Myanmar: Sittaung River near Taungoo	RMBH: biv 254/2	MF352250	MF352319	MF352377	18.9840	96.4361
<i>L. canefrui</i> Vikhrev, Bolotov & Kondakov, 2017	Myanmar: Sittaung River near Taungoo	RMBH: biv 254/4	MF352251	n/a	n/a	18.9840	96.4361
<i>L. canefrui</i> Vikhrev, Bolotov & Kondakov, 2017	Myanmar: Sittaung River near Taungoo	RMBH: biv 254/6	MF352252	n/a	n/a	18.9840	96.4361
<i>L. canefrui</i> Vikhrev, Bolotov & Kondakov, 2017	Myanmar: Ayeyarwady Basin, Myit Tha (Manipur) River	RMBH: biv 340/1	OL597825	n/a	OL598411	23.2285	94.1434
<i>L. canefrui</i> Vikhrev, Bolotov & Kondakov, 2017	Myanmar: Ayeyarwady Basin, Myit Tha (Manipur) River	RMBH: biv 340/3	OL597826	n/a	n/a	23.2285	94.1434
<i>L. canefrui</i> Vikhrev, Bolotov & Kondakov, 2017	Myanmar: Ayeyarwady Basin, Myit Tha (Manipur) River	RMBH: biv 343	OL597827	n/a	OL598412	23.2448	94.1662
<i>L. canefrui</i> Vikhrev, Bolotov & Kondakov, 2017	Myanmar: Ayeyarwady Basin, Chindwin River	RMBH: biv 352	OL597828	n/a	OL598413	23.1499	94.3629
<i>L. canefrui</i> Vikhrev, Bolotov & Kondakov, 2017	Myanmar: Bilin River near Daung Yet village	RMBH: biv 374/1	OL597829	n/a	n/a	17.2102	97.2488
<i>L. canefrui</i> Vikhrev, Bolotov & Kondakov, 2017	Myanmar: Bilin River near Daung Yet village	RMBH: biv 374/2	OL597830	n/a	n/a	17.2102	97.2488
<i>L. canefrui</i> Vikhrev, Bolotov & Kondakov, 2017	Myanmar: Bilin River near Daung Yet village	RMBH: biv 374/3	OL597831	n/a	n/a	17.2102	97.2488
<i>L. canefrui</i> Vikhrev, Bolotov & Kondakov, 2017	Myanmar: Bago River	RMBH: biv 380/1	OL597832	n/a	n/a	17.5334	96.3315
<i>L. canefrui</i> Vikhrev, Bolotov & Kondakov, 2017	Myanmar: Bago River	RMBH: biv 380/2	OL597833	n/a	n/a	17.5334	96.3315
<i>L. canefrui</i> Vikhrev, Bolotov & Kondakov, 2017	Myanmar: Bago River	RMBH: biv 380/3	OL597834	n/a	n/a	17.5334	96.3315
<i>L. canefrui</i> Vikhrev, Bolotov & Kondakov, 2017	Myanmar: Bago River	RMBH: biv 391/1	OL597835	n/a	n/a	17.6795	96.2347
<i>L. canefrui</i> Vikhrev, Bolotov & Kondakov, 2017	Myanmar: Bago River	RMBH: biv 391/2	OL597836	n/a	n/a	17.6795	96.2347
<i>L. canefrui</i> Vikhrev, Bolotov & Kondakov, 2017	Myanmar: Bago River	RMBH: biv 391/3	OL597837	n/a	n/a	17.6795	96.2347
<i>L. canefrui</i> Vikhrev, Bolotov & Kondakov, 2017	Myanmar: Ayeyarwady River near Tant Kyi village	RMBH: biv 418/1	OL597838	n/a	n/a	21.1567	94.8050
<i>L. canefrui</i> Vikhrev, Bolotov & Kondakov, 2017	Myanmar: Ayeyarwady River near Tant Kyi village	RMBH: biv 418/2	OL597839	n/a	OL598414	21.1567	94.8050
<i>L. canefrui</i> Vikhrev, Bolotov & Kondakov, 2017	Myanmar: Ayeyarwady River near Tant Kyi village	RMBH: biv 418/3	OL597840	n/a	n/a	21.1567	94.8050

<i>L. canefrii</i> Vikhrev, Bolotov & Kondakov, 2017	Myanmar: Ayeyarwady River at Mandalay city	RMBH: biv 431	OL597841	n/a	n/a	21.9574	96.0510
<i>L. canefrii</i> Vikhrev, Bolotov & Kondakov, 2017	Myanmar: Ayeyarwady River at Mandalay city	RMBH: biv 432/1	OL597842	n/a	n/a	21.9574	96.0510
<i>L. canefrii</i> Vikhrev, Bolotov & Kondakov, 2017	Myanmar: Ayeyarwady River at Mandalay city	RMBH: biv 432/2	OL597843	n/a	n/a	21.9574	96.0510
<i>L. canefrii</i> Vikhrev, Bolotov & Kondakov, 2017	Myanmar: Ayeyarwady River at Mandalay city	RMBH: biv 433/1	OL597844	n/a	n/a	21.9574	96.0510
<i>L. canefrii</i> Vikhrev, Bolotov & Kondakov, 2017	Myanmar: Ayeyarwady River at Mandalay city	RMBH: biv 433/2	OL597845	n/a	n/a	21.9574	96.0510
<i>L. canefrii</i> Vikhrev, Bolotov & Kondakov, 2017	Myanmar: Ayeyarwady River at Mandalay city	RMBH: biv 433/3	OL597846	n/a	n/a	21.9574	96.0510
<i>L. canefrii</i> Vikhrev, Bolotov & Kondakov, 2017	Myanmar: Ayeyarwady River near Mandalay city	RMBH: biv 444/1	OL597847	n/a	n/a	21.8893	95.9978
<i>L. canefrii</i> Vikhrev, Bolotov & Kondakov, 2017	Myanmar: Ayeyarwady River near Mandalay city	RMBH: biv 444/2	OL597848	n/a	n/a	21.8893	95.9978
<i>L. canefrii</i> Vikhrev, Bolotov & Kondakov, 2017	Myanmar: Ayeyarwady River near Mandalay city	RMBH: biv 444/3	OL597849	n/a	n/a	21.8893	95.9978
<i>L. canefrii</i> Vikhrev, Bolotov & Kondakov, 2017	Myanmar: Ayeyarwady River near Mandalay city	RMBH: biv 446/1	OL597850	n/a	n/a	21.8893	95.9978
<i>L. canefrii</i> Vikhrev, Bolotov & Kondakov, 2017	Myanmar: Ayeyarwady River near Mandalay city	RMBH: biv 446/2	OL597851	n/a	n/a	21.8893	95.9978
<i>L. canefrii</i> Vikhrev, Bolotov & Kondakov, 2017	Myanmar: Ayeyarwady Basin, Mole Stream	RMBH: biv 922/1	OL597852	OL598380	n/a	24.4010	97.2544
<i>L. canefrii</i> Vikhrev, Bolotov & Kondakov, 2017	Myanmar: Ayeyarwady Basin, Mole Stream	RMBH: biv 922/2	OL597853	n/a	n/a	24.4010	97.2544
<i>L. canefrii</i> Vikhrev, Bolotov & Kondakov, 2017	Myanmar: Ayeyarwady Basin, Mole Stream	RMBH: biv 922/3	OL597854	n/a	n/a	24.4010	97.2544
<i>L. canefrii</i> Vikhrev, Bolotov & Kondakov, 2017	Myanmar: Ayeyarwady Basin, Nant Kaung River	RMBH: biv 934/1	OL597855	n/a	n/a	25.5361	96.7267
<i>L. canefrii</i> Vikhrev, Bolotov & Kondakov, 2017	Myanmar: Ayeyarwady Basin, Nant Kaung River	RMBH: biv 934/2	OL597856	n/a	n/a	25.5361	96.7267
<i>L. canefrii</i> Vikhrev, Bolotov & Kondakov, 2017	Myanmar: Ayeyarwady Basin, Nant Kaung River	RMBH: biv 934/3	OL597857	n/a	n/a	25.5361	96.7267
<i>L. burmana</i> (Blanford, 1869)	Myanmar: Ayeyarwady River near Tha Phan Kone village	RMBH: biv 424/1	MK372441	n/a	n/a	21.2566	94.9848
<i>L. burmana</i> (Blanford, 1869)	Myanmar: Ayeyarwady River near Tha Phan Kone village	RMBH: biv 424/2	MK372442	MK372473	MK372505	21.2566	94.9848
<i>L. burmana</i> (Blanford, 1869)	Myanmar: Ayeyarwady River near Tha Phan Kone village	RMBH: biv 424/3	MK372443	MK372474	MK372506	21.2566	94.9848
<i>L. burmana</i> (Blanford, 1869)	Myanmar: Ayeyarwady River near Mandalay city	RMBH: biv 443/3	MK372447	n/a	n/a	21.8893	95.9978
<i>L. burmana</i> (Blanford, 1869)	Myanmar: Ayeyarwady River near Mandalay city	RMBH: biv 445/1	MK372448	n/a	n/a	21.8893	95.9978
<i>L. burmana</i> (Blanford, 1869)	Myanmar: Ayeyarwady River near Tant Kyi village	RMBH: biv 419/2	MK372437	n/a	n/a	21.1567	94.8050
<i>L. burmana</i> (Blanford, 1869)	Myanmar: Ayeyarwady River near Tant Kyi village	RMBH: biv 419/3	MK372438	MK372470	MK372502	21.1567	94.8050

<i>L. burmana</i> (Blanford, 1869)	Myanmar: Ayeyarwady Basin, Chindwin River	RMBH: biv 350/1	MK372412	MK372460	MK372490	23.1499	94.3629
<i>L. burmana</i> (Blanford, 1869)	Myanmar: Ayeyarwady Basin, Chindwin River	RMBH: biv 350/2	MK372413	MK372461	MK372491	23.1499	94.3629
<i>L. tavoyensis</i> (Gould, 1843)	Myanmar: Dawei River	RMBH: biv 149	KX230543	KX230554	KX230565	14.5013	98.1558
<i>L. tavoyensis</i> (Gould, 1843)	Myanmar: Ayeyarwady Basin, Lake Myaung	RMBH: biv 266/4	MF352280	MF352343	MF352400	24.2387	97.1658
<i>L. tavoyensis</i> (Gould, 1843)	Myanmar: Ayeyarwady Basin, Lake Myaung	RMBH: biv 266/5	MF352281	MF352344	MF352401	24.2387	97.1658
<i>L. tavoyensis</i> (Gould, 1843)	Myanmar: Ayeyarwady Basin, Lake Myaung	RMBH: biv 266/6	MF352282	MF352345	MF352402	24.2387	97.1658
<i>L. tavoyensis</i> (Gould, 1843)	Myanmar: Haungthayaw River	RMBH: biv 362/1	MK372423	n/a	MK372499	16.4714	98.2183
<i>L. tavoyensis</i> (Gould, 1843)	Myanmar: Haungthayaw River	RMBH: biv 362/2	MK372424	n/a	n/a	16.4714	98.2183
<i>L. tavoyensis</i> (Gould, 1843)	Myanmar: Haungthayaw River	RMBH: biv 362/3	MK372425	n/a	n/a	16.4714	98.2183
<i>L. tavoyensis</i> (Gould, 1843)	Myanmar: Salween Basin, Mizan Stream	RMBH: biv 367/1	OL597858	n/a	n/a	16.9770	97.6330
<i>L. tavoyensis</i> (Gould, 1843)	Myanmar: Salween Basin, Mizan Stream	RMBH: biv 367/2	OL597859	n/a	OL598415	16.9770	97.6330
<i>L. tavoyensis</i> (Gould, 1843)	Myanmar: Salween Basin, Mizan Stream	RMBH: biv 367/3	OL597860	n/a	n/a	16.9770	97.6330
<i>L. tavoyensis</i> (Gould, 1843)	Myanmar: Ayeyarwady River near Tha Phan Kone village	RMBH: biv 425/1	OL597861	n/a	n/a	21.2566	94.9848
<i>L. tavoyensis</i> (Gould, 1843)	Myanmar: Ayeyarwady River near Tha Phan Kone village	RMBH: biv 425/3	OL597862	n/a	OL598416	21.2566	94.9848
<i>L. tavoyensis</i> (Gould, 1843)	Myanmar: Ayeyarwady River near Mandalay city	RMBH: biv 447/1	OL597863	n/a	n/a	21.8893	95.9978
<i>L. tavoyensis</i> (Gould, 1843)	Myanmar: Ayeyarwady River near Mandalay city	RMBH: biv 447/2	OL597864	n/a	n/a	21.8893	95.9978
<i>L. tavoyensis</i> (Gould, 1843)	Myanmar: Tanintharyi River	RMBH: biv 634/1	OL597865	OL598381	OL598417	12.2523	99.0402
<i>L. tavoyensis</i> (Gould, 1843)	Myanmar: Tanintharyi River	RMBH: biv 634/2	OL597866	OL598382	OL598418	12.2523	99.0402
<i>L. tavoyensis</i> (Gould, 1843)	Myanmar: Tanintharyi River	RMBH: biv 634/3	OL597867	OL598383	OL598419	12.2523	99.0402
<i>L. tavoyensis</i> (Gould, 1843)	Myanmar: Tanintharyi River	RMBH: biv 635/1	OL597868	n/a	n/a	12.0914	99.0174
<i>L. tavoyensis</i> (Gould, 1843)	Myanmar: Tanintharyi River	RMBH: biv 635/2	OL597869	n/a	n/a	12.0914	99.0174
<i>L. tavoyensis</i> (Gould, 1843)	Myanmar: Tanintharyi River	RMBH: biv 635/3	OL597870	n/a	n/a	12.0914	99.0174
<i>L. tavoyensis</i> (Gould, 1843)	Myanmar: Tanintharyi Basin, Nga Wun River	RMBH: biv 646/2	OL597871	n/a	n/a	11.8233	99.1493
<i>L. whitteni</i> Bolotov et al., 2019	Myanmar: Ayeyarwady Basin, Chindwin River	RMBH: biv 349	MK372411	MK372459	MK372489	23.1918	94.3217
<i>L. whitteni</i> Bolotov et al., 2019	Myanmar: Ayeyarwady River	RMBH: biv 435	MK372446	MK372475	MK372507	21.9574	96.0510
<i>L. whitteni</i> Bolotov et al., 2019	Myanmar: Ayeyarwady River	RMBH: biv 449	MK372449	MK372476	MK372508	21.8893	95.9978
<b>Outgroup Taxa</b>							
<b>MARGARITIFERIDAE Henderson, 1929</b>							
<i>Gibbosula laosensis</i> (Lea, 1863)	Laos: Mekong Basin, Nam Long River	IEPN-Mekong-La-1	JX497731	KC845943	KT343741		
<i>Margaritifera dahurica</i> (Middendorff, 1850)	Far East of Russia: Amur Basin, Ilistaya River	IEPN d0088/6	KJ161516	KJ943526	KT343747		
<b>Gonideini s.s.</b>							
<i>Solenais oleivora</i> (Heude, 1877) sp. 1	China	16_NCU_XPW U_SU181	MG463091	n/a	MG595618		
<i>Leguminaia wheatleyi</i> (Lea, 1862)	Turkey: Karasu River	RMBH: biv 177/7	MN402614	MN396725	MN396721		

<i>Gonidea angulata</i> (Lea, 1838)	Canada: Okanagan lake	RMBH: biv 294/1	MN402615	MN396726	MN396722		
<b>Lamprotulini Modell, 1942</b>							
<i>Lamprotula leaii</i> (Griffith & Pidgeon, 1833)	Vietnam	RMBH: biv 200/1	MN402616	MN396727	MN396723		
<i>Potomida littoralis</i> (Cuvier, 1798)	Turkey: Karasu River	RMBH: biv 177/10	MN402617	MN396728	MN396724		

**Table S2.** The best-fit models of nucleotide substitution and partition scheme.

Tribe	Model used in ML analyses (IQ-TREE)			Model used in Bayesian analyses (MrBayes)		
	1st codon of <i>COI</i>	2nd codon of <i>COI</i>	3rd codon of <i>COI</i>	1st codon of <i>COI</i>	2nd codon of <i>COI</i>	3rd codon of <i>COI</i>
Indochinellini dataset	F81	TIM3+ G	TN+G	The same models		
Lamellidentini dataset	F81	TN+G	TN+G	The same models		
Leoparreiini dataset	F81	HKY	TN+G	The same models		
Contradentini dataset	F81+I	TIM3+G	TN+G	GTR + G		

**Table S3.** Genetic divergences (mean uncorrected p-distances, %) from *Trapezoideus mitanensis* **sp. nov.** and its congeners based on the mitochondrial *COI* gene sequences.

Species	<i>T. foliaceus</i>	<i>T. subviridus</i>	<i>T. lenya</i>
<i>T. subviridus</i>	6.3±0.9		
<i>T. lenya</i>	4.6±0.7	5.9±0.9	
<i>T. mitanensis</i> <b>sp. nov.</b>	6.2±0.9	6.6±0.9	5.4±0.8

**Table S4.** Shell parameters (mm) and reference DNA sequences for the type series of *Trapezoideus mitanensis* **sp. nov.** from Myanmar.

Status of Specimen	Specimen Voucher*	Shell Length, mm	Shell Height, mm	Shell Width, mm	NCBI's GenBank acc. nos.		
					<i>COI</i>	<i>16S rRNA</i>	<i>28S rRNA</i>
Holotype	RMBH biv 1021/1	37.1	20.8	12.3	OL597613	ON142670	ON171238
Paratype	RMBH biv 1021/2	32.6	19.7	10.8	OL597614	OL598370	OL598384
Paratype	RMBH biv 1021/3	38.8	20.7	12.0	OL597615	n/a	n/a
Paratype	RMBH biv 1021/4	33.8	18.8	10.9	n/a	n/a	n/a
Paratype	RMBH biv 1021/5	33.4	18.7	10.3	n/a	n/a	n/a
Paratype	RMBH biv 1021/6	30.7	17.1	9.9	n/a	n/a	n/a
Paratype	RMBH biv 1021/7	29.1	16.6	8.7	n/a	n/a	n/a
Paratype	RMBH biv 1021/8	29.8	16.0	9.1	n/a	n/a	n/a
Paratype	RMBH biv 1021/9	27.4	16.0	8.8	n/a	n/a	n/a
Paratype	RMBH biv 1021/10	27.1	15.9	8.6	n/a	n/a	n/a
Paratype	RMBH biv 1022/1	27.1	15.9	8.7	OL597616	OL598371	OL598385
Paratype	RMBH biv 1022/2	27.0	16.3	9.2	OL597617	OL598372	OL598386

**Alignment S1.** 3 codons of *COI* + *16S rRNA* + *28S rRNA* sequence alignment.

DNA, codon1 = 1-660\3

DNA, codon2 = 2-660\3

DNA, codon3 = 3-660\3

DNA, 16s = 661-1130

DNA, 28s = 1131-1896

**Alignment S2.** *COI* sequence alignment of Indochinellini from Myanmar.

**Alignment S3.** *COI* sequence alignment of Leoparreysiini from Myanmar.

**Alignment S4.** *COI* sequence alignment of Lamellidentini from Myanmar.

**Alignment S5.** *COI* sequence alignment of Contradentini from Myanmar.