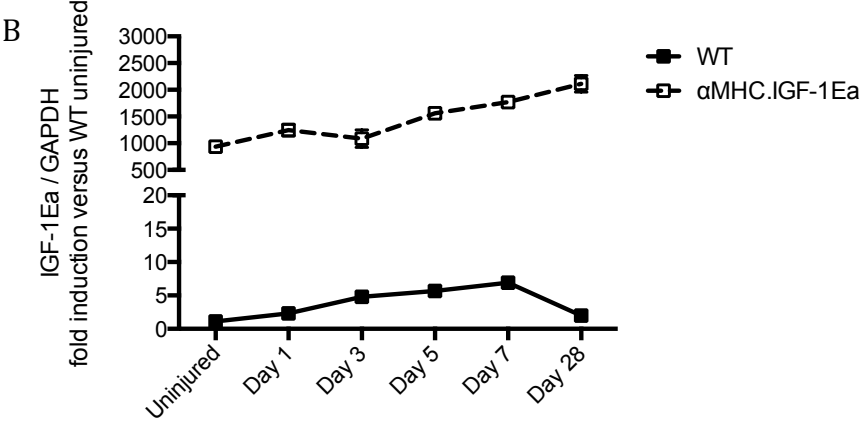
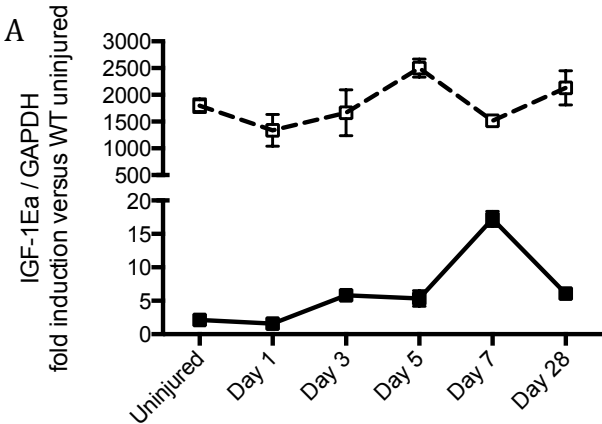
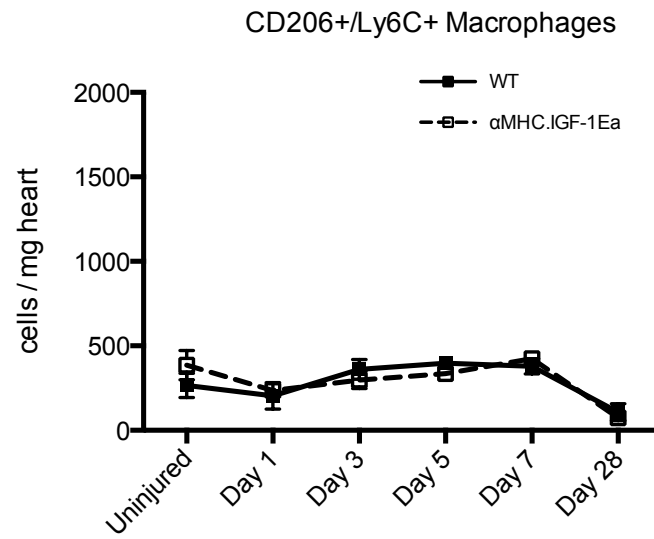


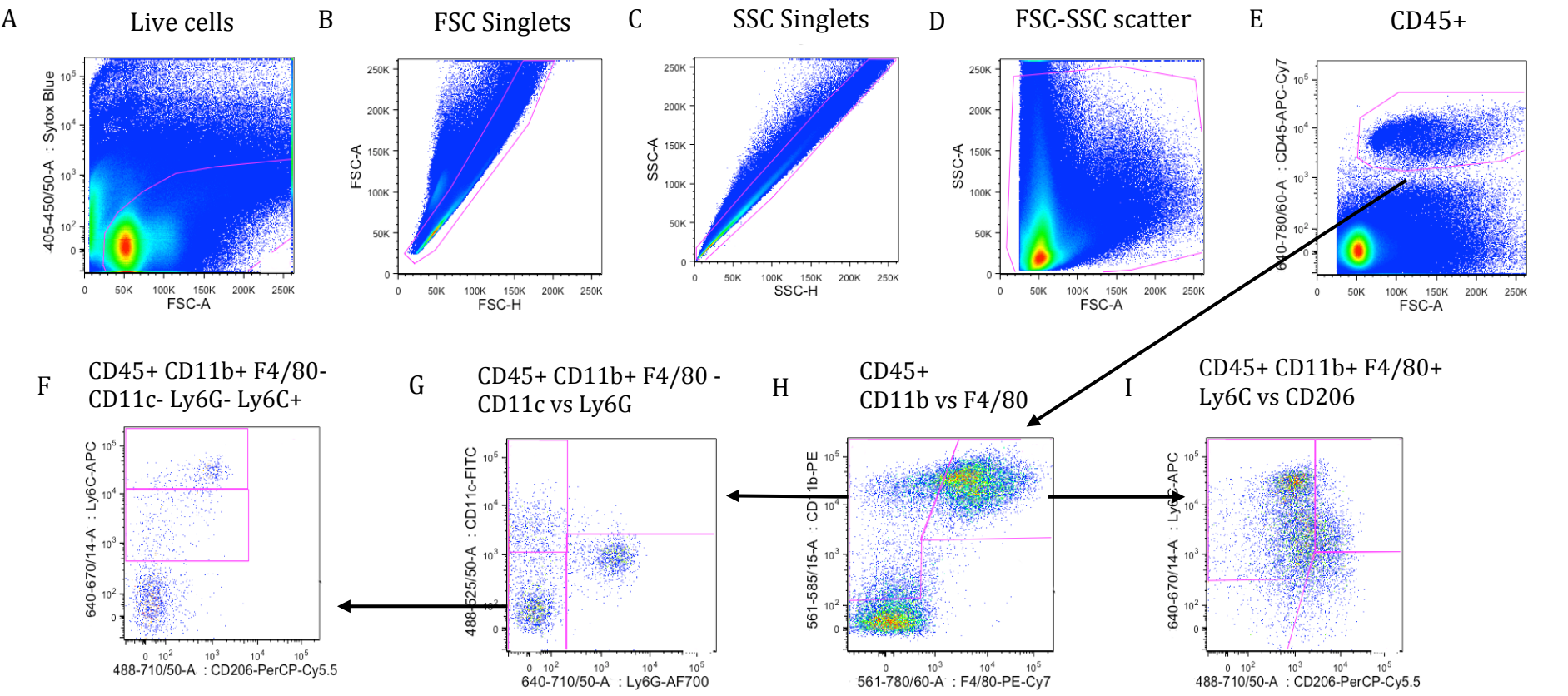
Supplementary 1.



## Supplementary 2.

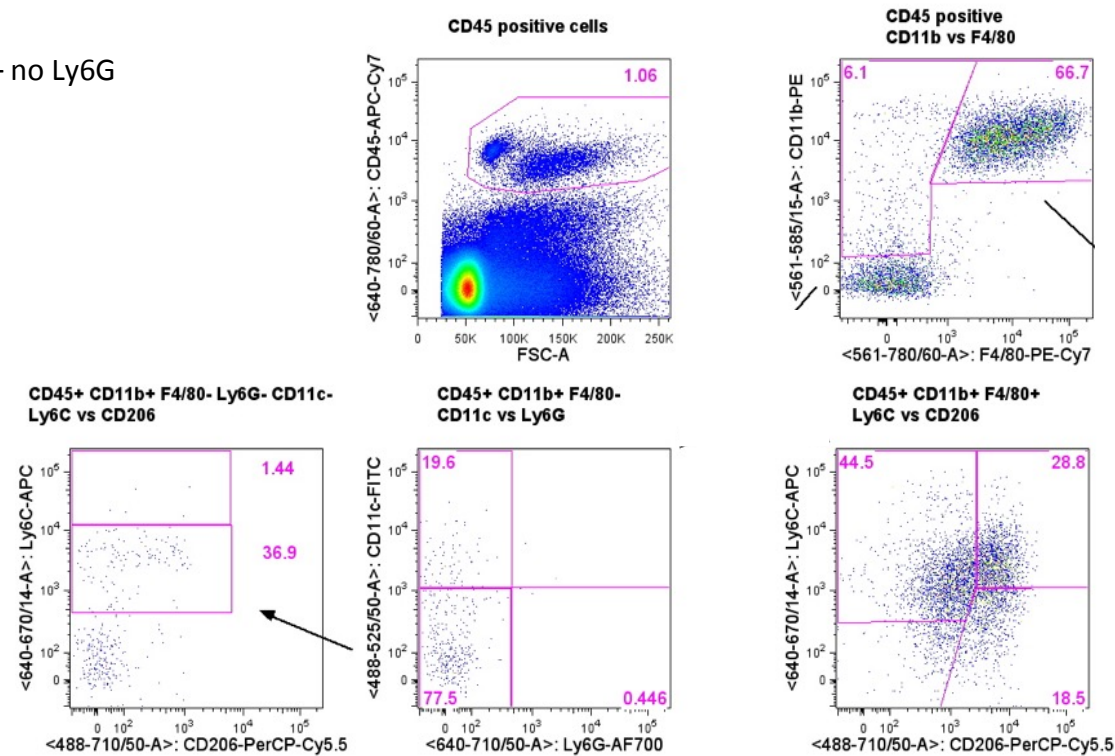


Supplementary 3.

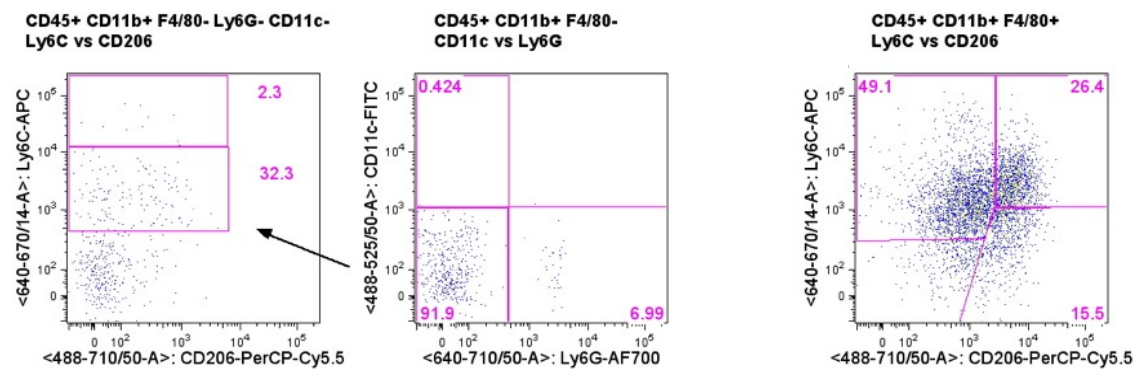


Supplementary 4.

FMO#1 – no Ly6G

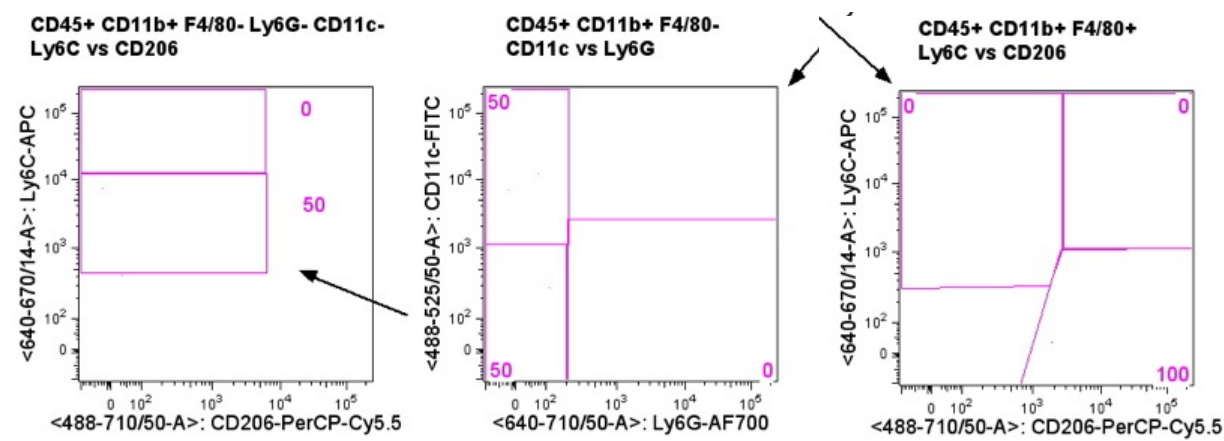


FMO#2 – no CD11c

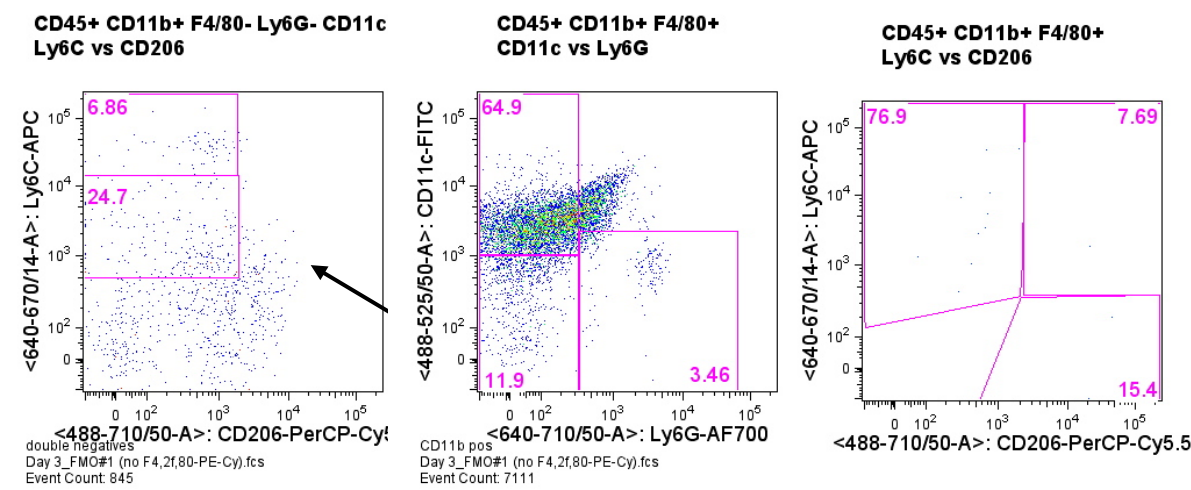


Supplementary 5.

FMO#3 – no CD11b



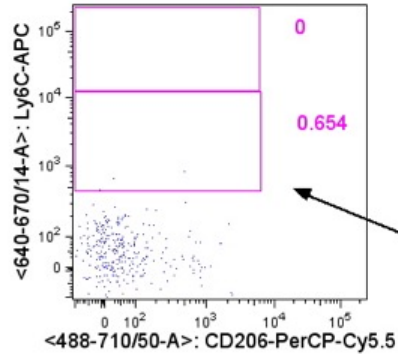
FMO#4 – no F4/80



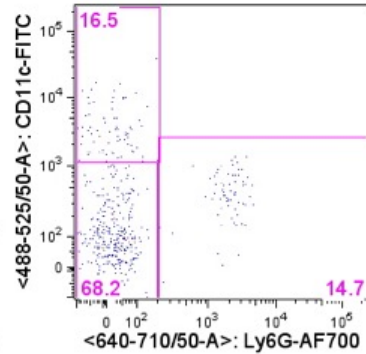
## Supplementary 6.

FMO#5 – no Ly6C

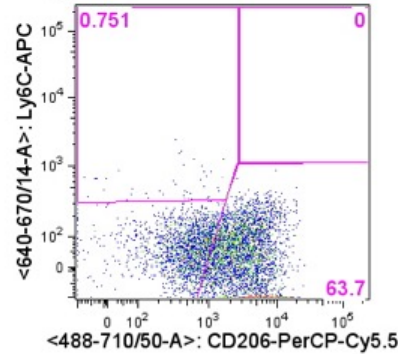
CD45+ CD11b+ F4/80- Ly6G- CD11c-  
Ly6C vs CD206



CD45+ CD11b+ F4/80-  
CD11c vs Ly6G

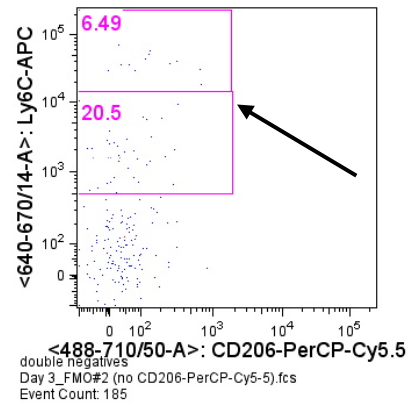


CD45+ CD11b+ F4/80+  
Ly6C vs CD206

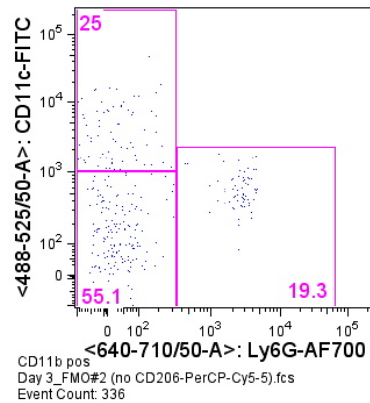


FMO#6 – no CD206

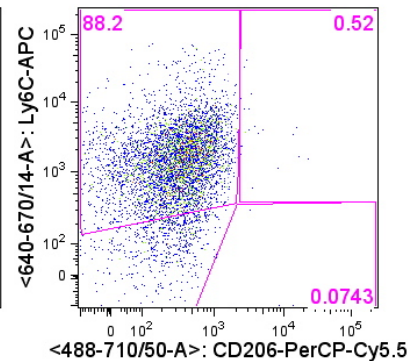
CD45+ CD11b+ F4/80- Ly6G- CD11c-  
Ly6C vs CD206



CD45+ CD11b+ F4/80+  
CD11c vs Ly6G



CD45+ CD11b+ F4/80+  
Ly6C vs CD206



Supplementary table 1.

|        | WT           | $\alpha$ MHC-IGF-1Ea | WT            | $\alpha$ MHC-IGF-1Ea |
|--------|--------------|----------------------|---------------|----------------------|
|        | Uninjured    |                      | 1 Day         |                      |
| LVEDVd | 52,82±5,246  | 70,05±10,54          | 55,09±8,99    | 67,83±7,35           |
| LVEDVs | 18,91±3,93   | 32,79±9,10           | 39,31±9,35    | 44,57±12,51          |
| LVIDd  | 3,71±0,26    | 4,08±0,18            | 3,44±0,29     | 3,75±0,30            |
| LVIDs  | 2,47±0,182   | 3,01±0,29            | 3,05±0,52     | 3,24±0,40            |
| LVPWd  | 0,83±0,33    | 1,02±0,07            | 0,95±0,07     | 0,85±0,05            |
| LVPWs  | 1,10±0,071   | 1,18±0,11            | 1,07±0,14     | 0,98±0,19            |
| LVEF   | 64,652±2,72  | 67,57±3,21           | 37,24±8,11&   | 29,96±9,266&         |
| %FAC   | 38,80±1,91   | 37,43±2,36           | 18,83±4,35&   | 23,52±7,91           |
|        | 3 Days       |                      | 5 Days        |                      |
| LVEDVd | 57,13±5,271  | 57,14±4,26           | 75,610±15,68  | 59,930±10,355        |
| LVEDVs | 34,97±4,01   | 26,48±3,14           | 50,66±6,51    | 34,82±9,22           |
| LVIDd  | 3,78±0,07    | 3,59±0,452           | 4,06±0,427    | 3,69±0,24            |
| LVIDs  | 2,92±0,15    | 2,75±0,31            | 3,11±0,33     | 2,99±0,36            |
| LVPWd  | 0,86±0,08    | 0,74±0,04            | 0,67±0,09     | 0,88±0,17            |
| LVPWs  | 1,00±0,09    | 0,94±0,25            | 0,70±0,08     | 1,09±0,18            |
| LVEF   | 43,72±2,851& | 54,17±2,80           | 34,80±4,24&   | 46,51±7,95           |
| %FAC   | 22,51±2,27   | 28,90±3,11           | 16,60±2,34&   | 23,43±4,59&          |
|        | 7 Days       |                      | 1 Month       |                      |
| LVEDVd | 78,95±14,71  | 56,88±11,5           | 101,88±20,54& | 63,29±6,34           |
| LVEDVs | 76,61±10,81& | 27,133±5,793*        | 73,72±14,80&  | 29,08±3,37*          |
| LVIDd  | 4,31±0,32    | 3,63±0,35            | 4,38±0,31     | 3,80±0,16            |
| LVIDs  | 4,26±0,21&   | 2,88±0,53*           | 3,85±0,27&    | 2,65±0,14*           |
| LVPWd  | 0,62±0,03    | 0,70±0,07            | 0,71±0,05     | 0,80±0,06            |
| LVPWs  | 0,60±0,03    | 0,96±0,96            | 0,65±0,03     | 1,05±0,11*           |
| LVEF   | 24,35±6,52&  | 53,16±10,24*         | 35,24±3,38&   | 59,244±3,949*        |
| %FAC   | 16,69±4,106& | 36,340±3,31*         | 15,636±2,06&  | 32,783±2,38*         |