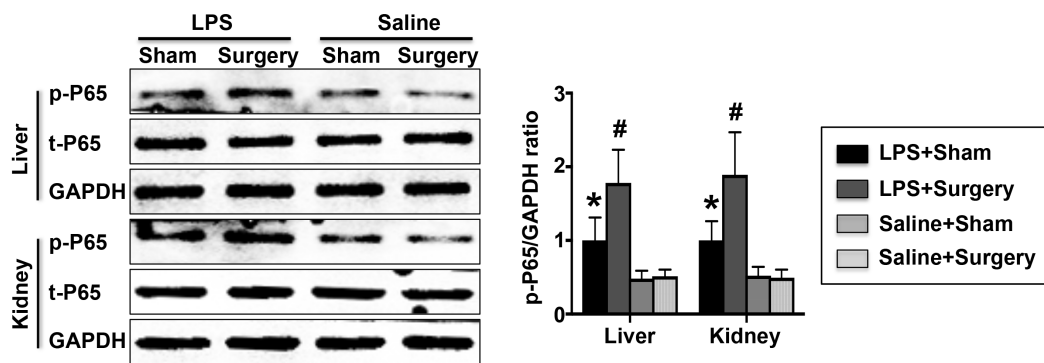


Supplementary materials

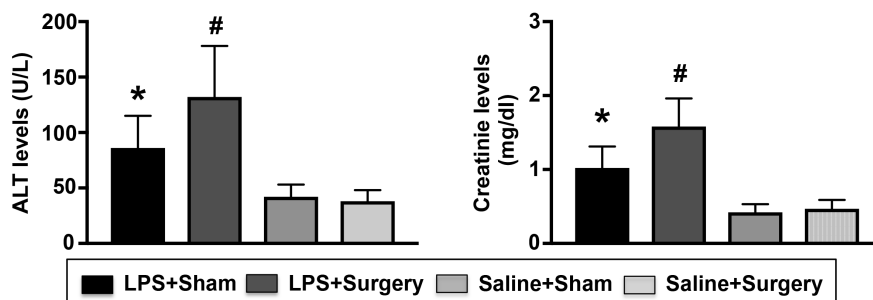
TSH, FT3 and FT4 Measurement

Thirty-five days after thyroidectomy, blood samples of control mice and thyroidectomy mice were collected. The samples were centrifuged for 20 min at 3000 g, after which the supernatant was collected and the serum TSH, FT3 and FT4 levels was measured using the ELISA kit according to the manufacturer's instructions (triple from Nanjing Jiancheng Bioengineering Institute, China).

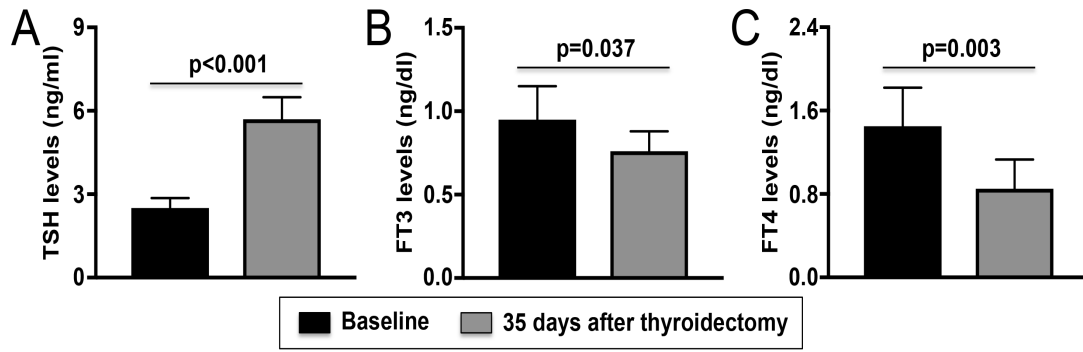
Supplementary figure and figure legend:



Supplementary figure 1: The P65 pathway activation in (A). liver and (B). kidney in the four groups. *P < 0.05 vs. the Saline+Sham group. #P < 0.05 vs. the LPS+Sham group. N=4-5 for each group.



Supplementary figure 2: The (A). ALT levels and (B). creatinine levels in each group. *P < 0.05 vs. the Saline+Sham group. #P < 0.05 vs. the LPS+Sham group. N=8 for each group.



Supplementary figure 3: Effect of thyroidectomy on thyroid function. (A-C). The serum TSH, FT3 and FT4 levels in baseline levels and 35 days after thyroidectomy. N=8 in each group.