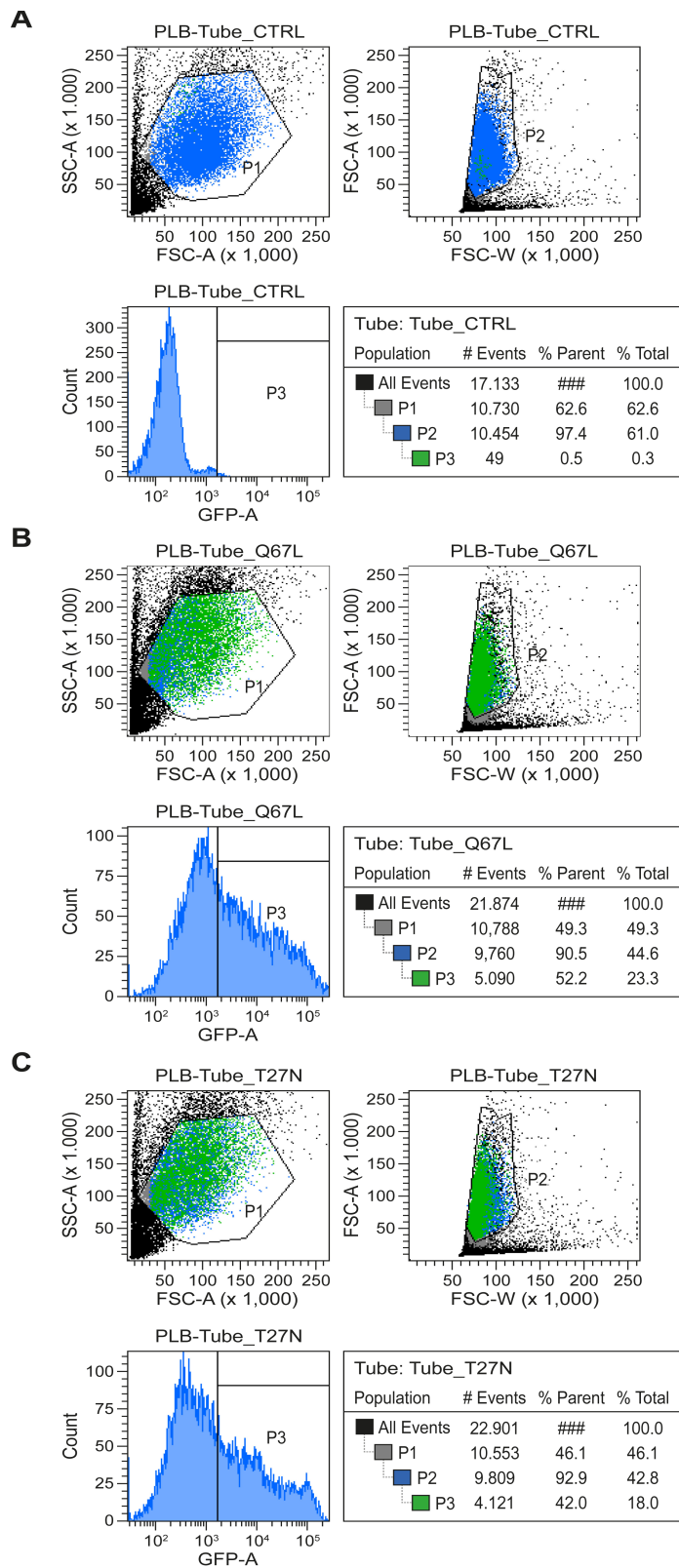


Supplementary table

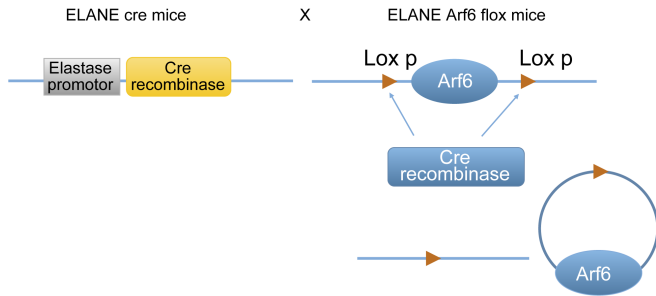
PLB-985 Arf6 WT GFP ⁻ / 7AAD ⁻ (10 ⁶ cells)	PLB-985 Arf6 WT GFP ⁺ / 7AAD ⁻ (10 ⁶ cells)	PLB-985 Arf6 T27N GFP ⁻ / 7AAD ⁻ (10 ⁶ cells)	PLB-985 Arf6 T27N GFP ⁺ / 7AAD ⁻ (10 ⁶ cells)
-	5.7	10.29	3.47
3.94	3.72	0.67	0.22
2.93	2.35	5.61	2.07
1.1	2.34	3.1	0.9

Supplementary table 1. The number of viable cells (7AAD⁻) GFP⁺ and GFP⁻ PLB-985 cells recovered following sorting after 48h post-transfection.

Supplementary figures

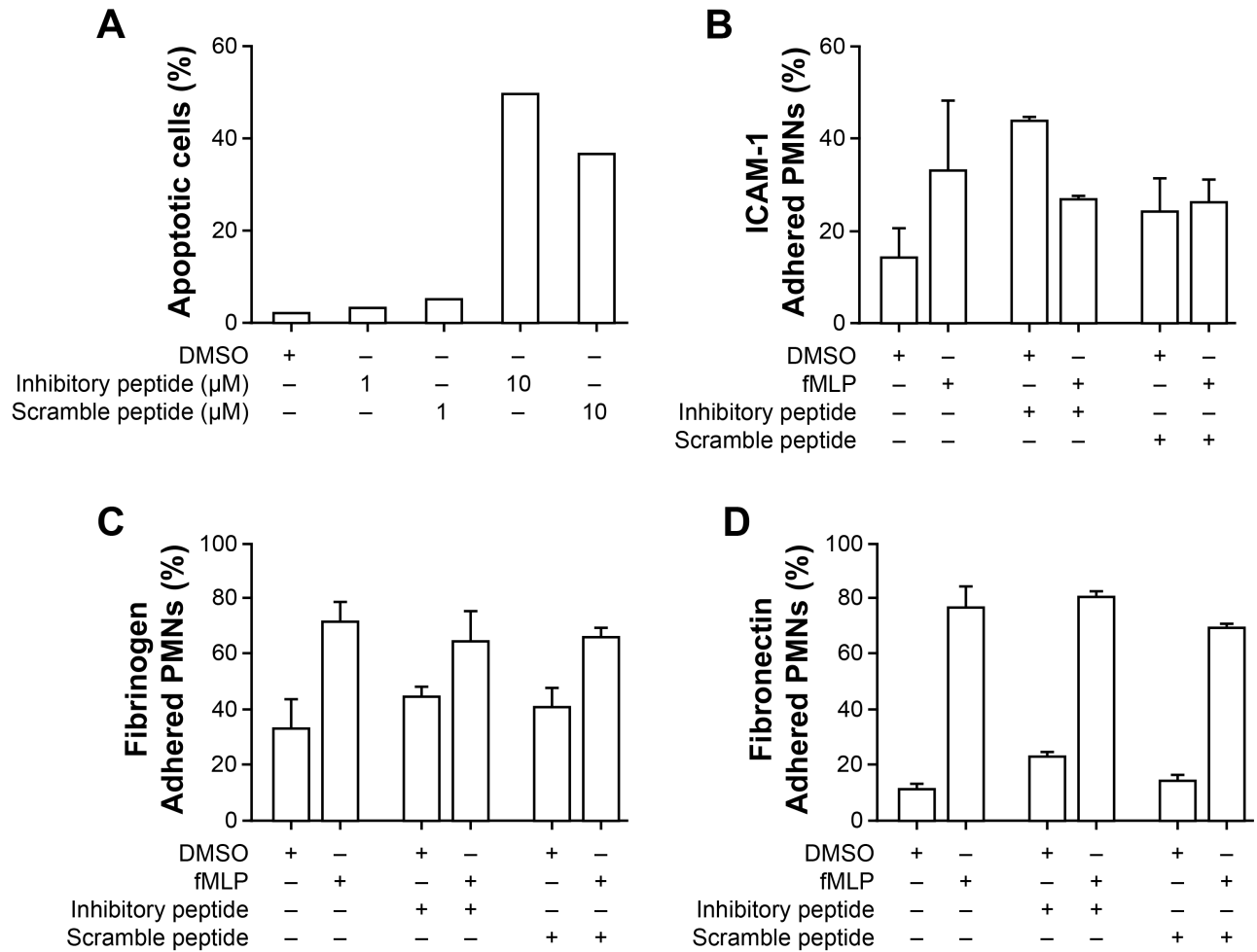


Supplementary Fig. 1. Analyses of expression of the GFP constructs by FACS at 48h post-transfection of PLB-985 cells.

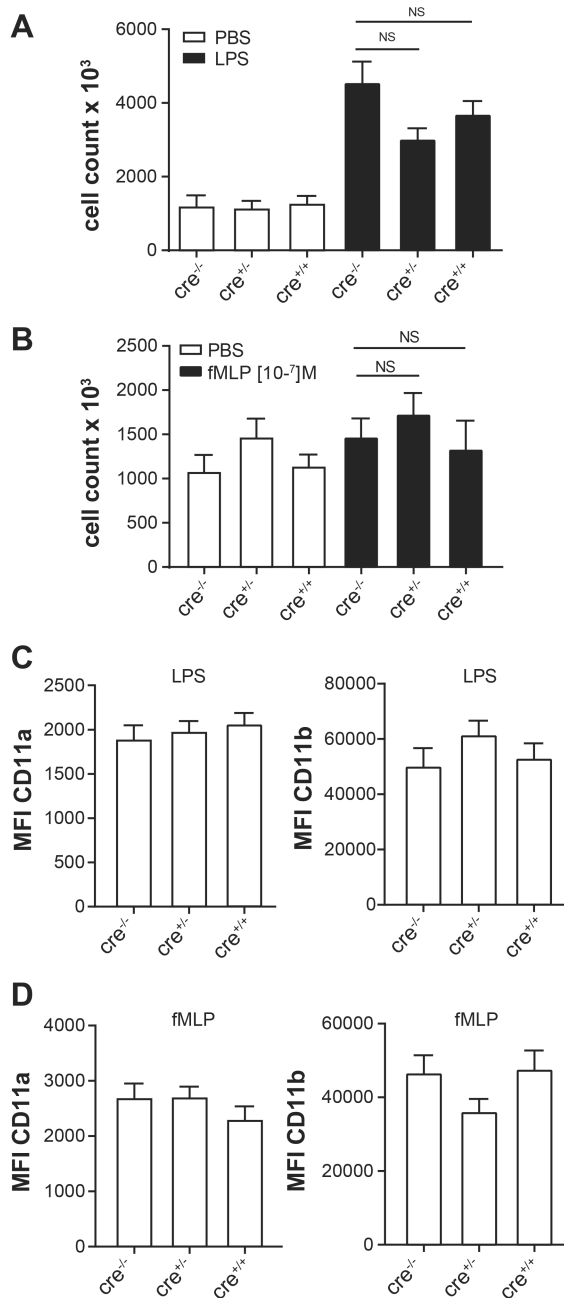


flox^{+/+}cre^{-/-}		
flox^{+/+}cre^{+/-}		
flox^{+/+}cre^{+/+}		
Cre^{-/-}		
Cre^{+/-}		
Cre^{+/+}		

Supplementary Fig. 2. Generation of PMN-Arf6 conditional KO mice and mouse genotypes used in this study.



Supplementary Fig. 3. The N-myristoylated ARF6 inhibitory peptide induces apoptosis and a non-cytotoxic concentration of the inhibitory peptide does not inhibit fMLP-induced PMN adhesion. **(A)** Human PMNs were incubated with the N-myristoylated ARF6 inhibitory peptide and the scrambled peptide for 1h at 37°C and apoptosis was determined as described in Materials and Methods (n=1, triplicate measurements). **(B-D)** Calcein-labeled PMNs were incubated with the inhibitory or the scrambled peptide (1 μM) for 1h before stimulation with fMLP (10⁻⁶M) for 30 min. **(B)** Adhesion to immobilized ICAM-1 (n=2 independent experiments performed in triplicate). **(C)** Adhesion to immobilized fibrinogen (n=3 independent experiments performed in triplicate). **(D)** Adhesion to immobilized fibronectin (n=2 independent experiments performed in triplicate).



Supplementary Fig. 4. PMN migration into the air pouches and cell surface expression of the $\beta 2$ integrins in air pouch PMNs of mice bearing one or two *Cre* transgenes. The amounts of PMNs recruited into the mouse air pouches injected with LPS (**A**) or fMLP (**B**) for 4h were monitored (PBS n=6 mice; LPS: n=30-46 mice; fMLP n=28-36 mice). (**C**) Ly6G⁺ cells were gated to evaluate cell surface expression of CD11a (left panel) and CD11b (right panel) in PMNs recruited into the mouse air pouches injected with LPS (n=6 mice). (**D**) Cell surface expression of CD11a (left panel) and CD11b (right panel) in PMNs recruited into the mouse air pouches injected with fMLP (n=6-10 mice).